

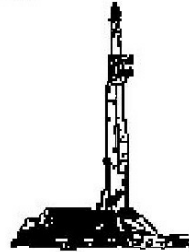
GOOLSBY BROTHERS
and associates, inc.

575 Union Blvd, Suite 208
Lakewood, CO 80228
303-945-2860 Office



Geological Wellsite
Supervision

www.goolsbybrothers.com



Scale 1:240 (5"=100') Imperial
Measured Depth Log

Well Name: Harvesters State 4N-16C-M
API: 051234635800
Location: Section 15, T6N, R66W, Weld County, CO.
License Number: Region: Wattenberg
Spud Date: April 24, 2018 Drilling Completed: April 26, 2018
Surface Coordinates: SWNE T6N, R66W Sec 15, 1,653' FNL & 2,333' FEL
LAT 40.2928036 LONG -104.4545025
Bottom Hole Coordinates: NWNW T6N, R66W Sec 16, 734' FNL & 98' FWL
Ground Elevation (ft): 4,803' K.B. Elevation (ft): 4,823'
Logged Interval (ft): 7,000' To: 15,057' Total Depth (ft): 15,057' DMTD
Formation: Pierre Shales / Sands, Sharon Springs, Niobrara (Target)
Type of Drilling Fluid: FW Surface, OBM Vertical, Curve & Lateral
Printed by HORIZONTAL.LOG from WellSight Systems 1-800-447-1534 www.WellSight.com

OPERATOR

Company: SRC Energy Inc.
Address: 1675 Broadway, Suite 2600
Denver, Colorado 80202
(720) 616-4300

GEOLOGIST

Name: Ryan Scribner & Brian Spitzmiller
Company: Goolsby Brothers & Assoc. (GBA), Inc. (www.goolsbybrothers.com)
Address: 575 Union Blvd. Suite 208,
Lakewood CO. 80228
Tel 303-618-7736

Logs

PULSE MWD GR from 1,818'-15,042' MD

Casing

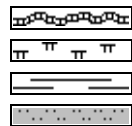
9 5/8" Surface Casing set @ 1,802' MD

5 1/2" Production Casing set @ 15,050' MD

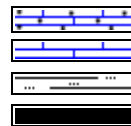
Comments

- 1) Drilling Contractor: Precision Drilling, Rig #462
Toolpusher: Cody Teeter, Joseph Credeur
- 2) Company Man: Steve Wilson, Buddy Davis
Lovell Young, Tony Pershall
- 3) Mud Company : Anchor USA
Engineer: Tim Pattison
- 4) Directional Drilling: Baker Hughes Directional
Rotary Steerable BHA
Drillers: Josh Otero, Matthew Leopold
- 5) Gas Equipment: Pason Gas Analyzer (Spectrometer)
- 6) SRC Geologist: Tony Williams

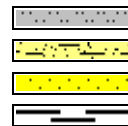
ROCK TYPES



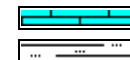
Bent
Mrlst
Shale
Slstst



Carb chalk
Chalk
Slty sh
Coal



Slstst
Arg_ss
Ss
Carb sh



Ls
Slty sh

ACCESSORIES

MINERAL

	Anhy
	Arggrn
	Arg
	Bent
	Bit
	Brecfrag
	Calc
	Carb
	Chtdk
	Chtlt
	Dol
	Feldspar
	Ferrpel
	Ferr
	Glau
	Gyp
	Hvymin
	Kaol
	Marl

	Minxl
	Nodule
	Phos
	Pyr
	Salt
	Sandy
	Silt
	Sil
	Sulphur
	Tuff

FOSSIL

	Algae
	Amph
	Belm
	Bioclst
	Brach
	Bryozoa
	Cephal
	Coral

	Crin
	Echin
	Fish
	Foram
	Fossil
	Gastro
	Oolite
	Ostra
	Pelec
	Pellet
	Pisolite
	Plant
	Strom

STRINGER

	Chlkstg
	Anhy
	Arg
	Bent
	Coal

	Dol
	Gyp
	Ls
	Mrst
	Slststrg
	Ssstrg

TEXTURE

	Boundst
	Chalky
	Cryxln
	Earthy
	Finexln
	Grainst
	Lithogr
	Microxln
	Mudst
	Packst
	Wackest

OTHER SYMBOLS

POROSITY TYPE

	Earthy
	Fenest
	Fracture
	Inter
	Moldic
	Organic
	Pinpoint
	Vuggy

SORTING

	Well
	Moderate
	Poor

ROUNDING

	Rounded
	Subrnd
	Subang
	Angular

OIL SHOWS

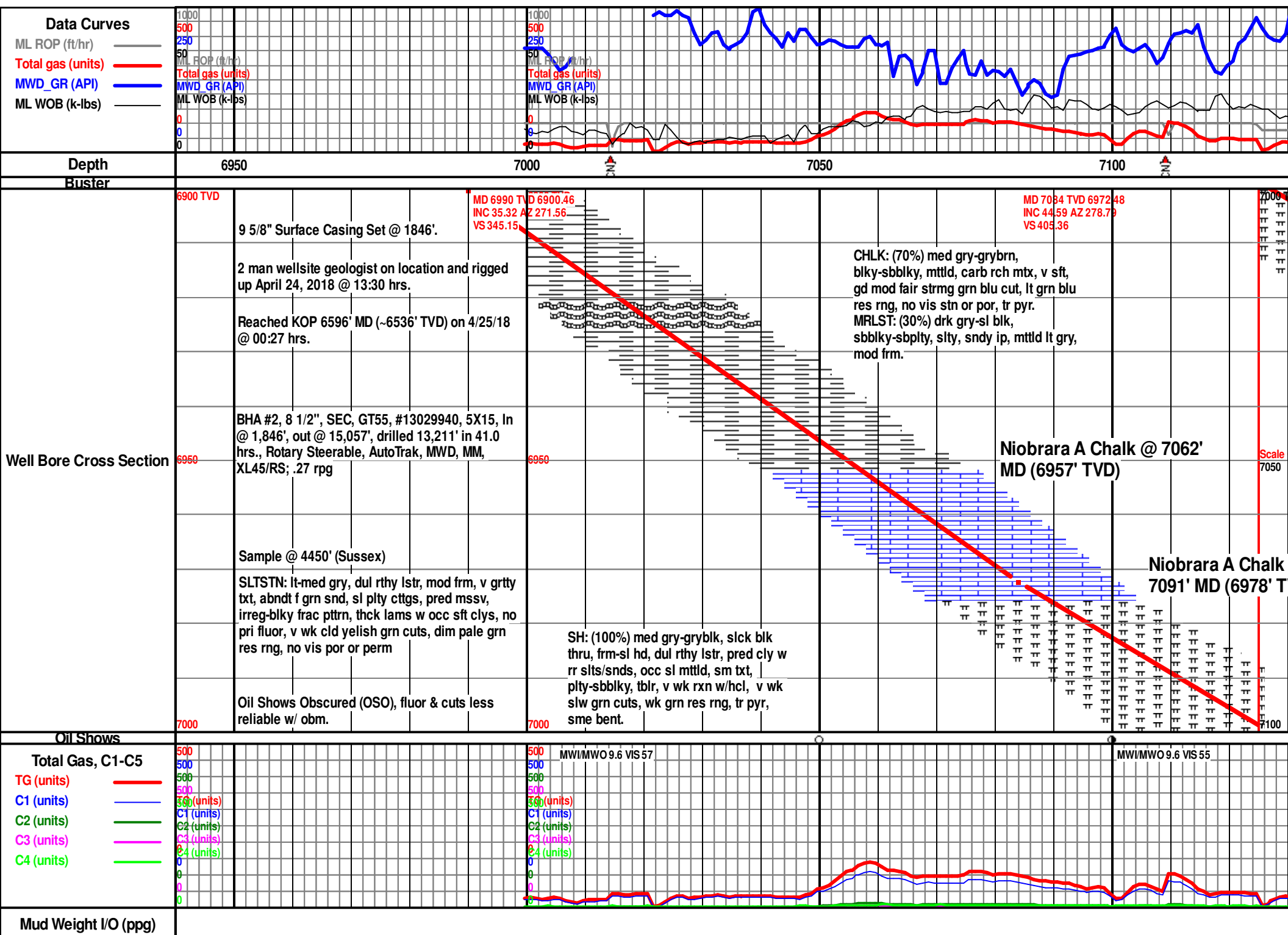
	Even
	Spotted
	Ques
	Dead
	Vspotty
	near even

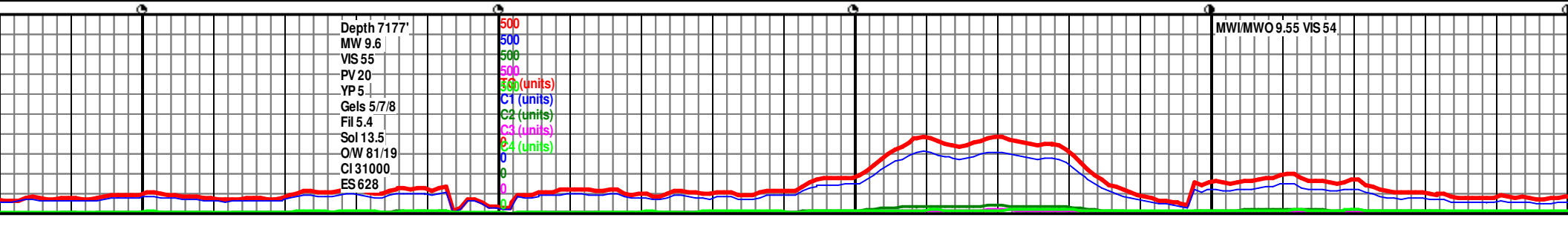
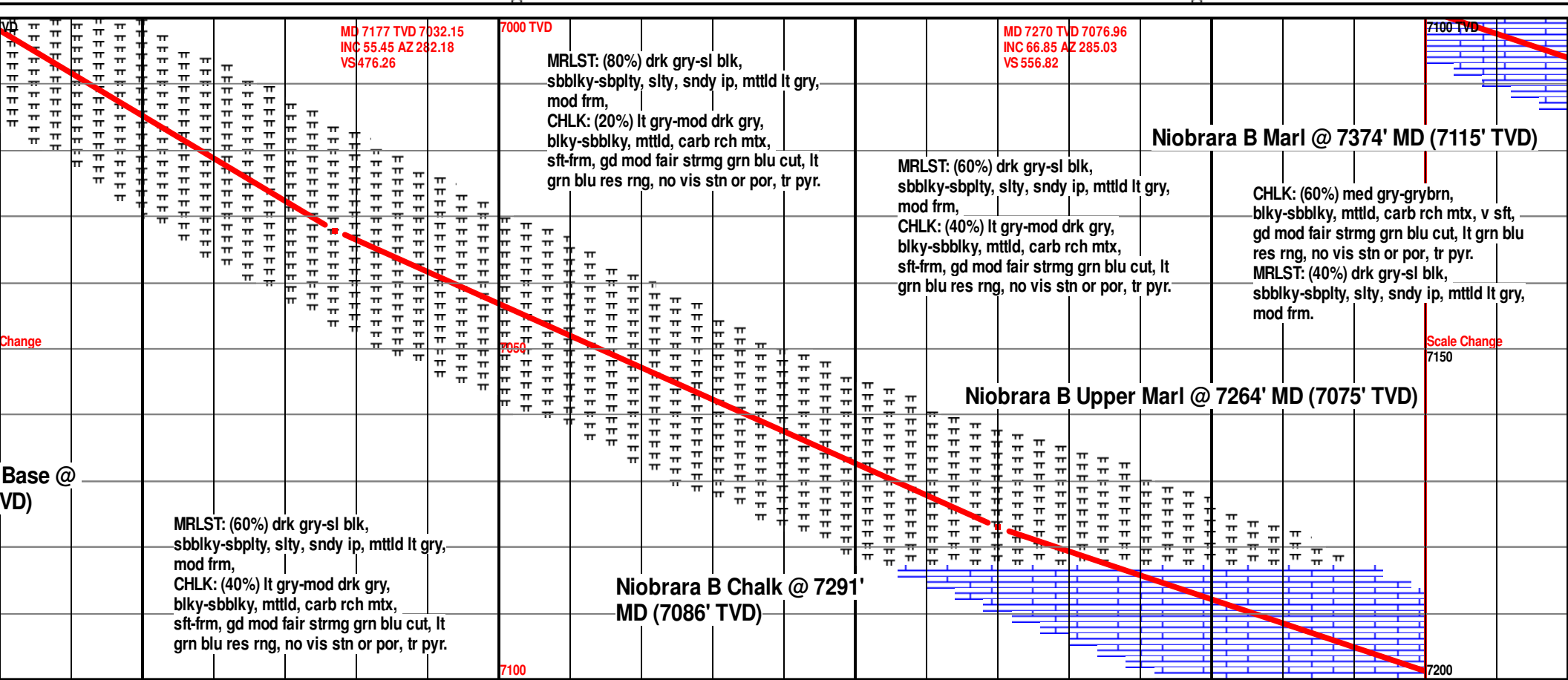
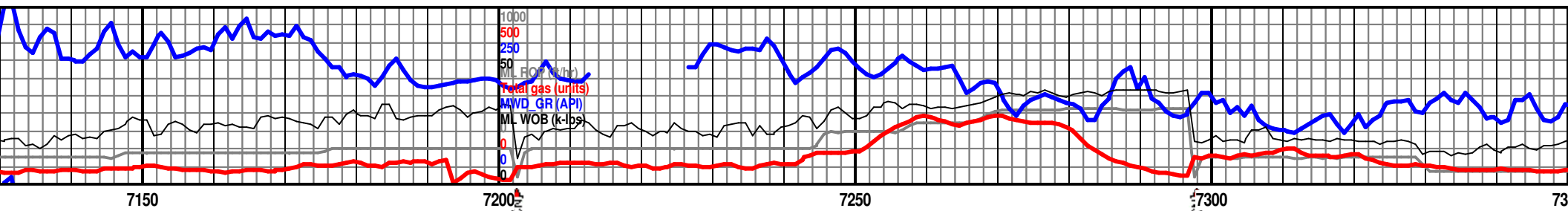
INTERVALS

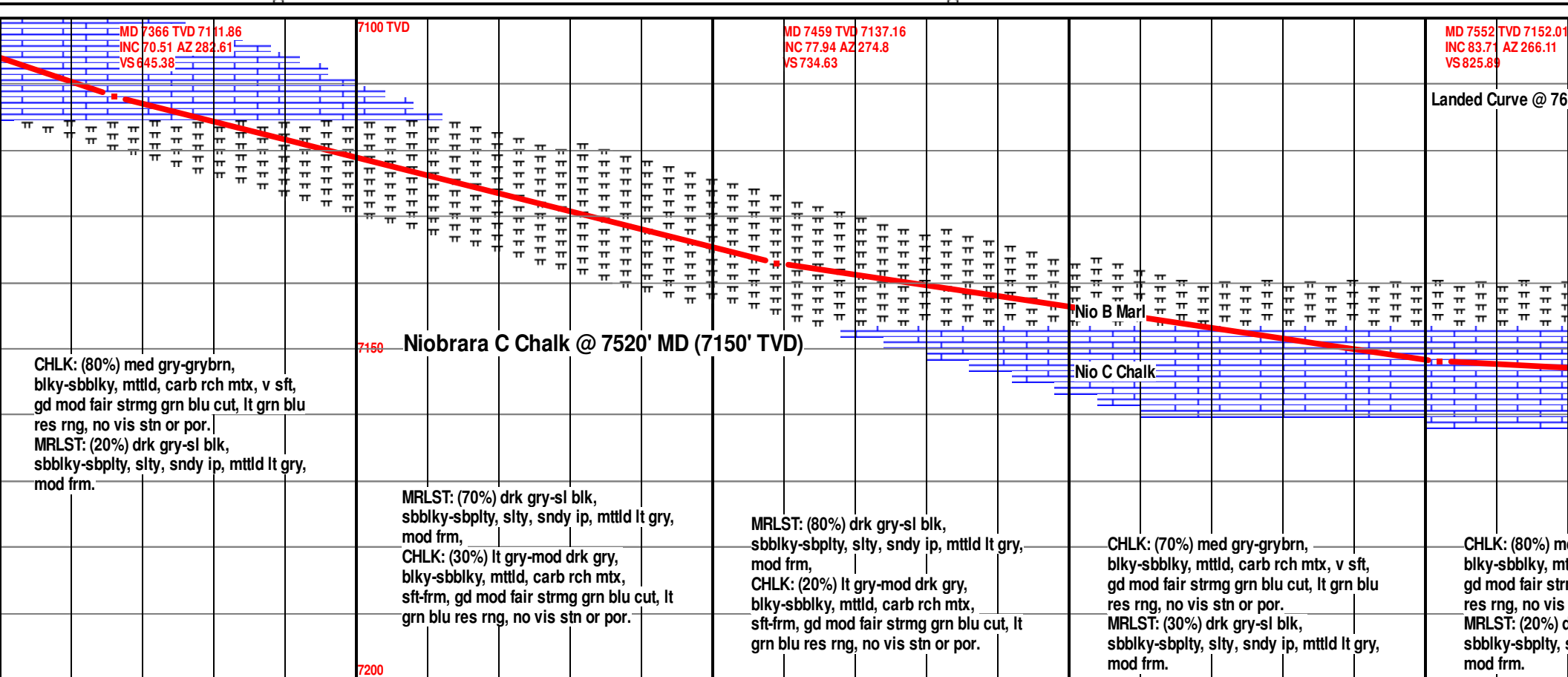
	Core
	Dst

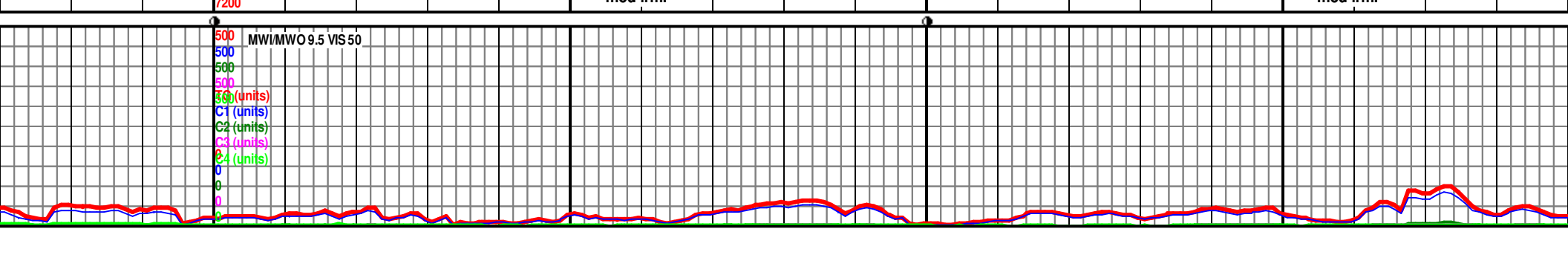
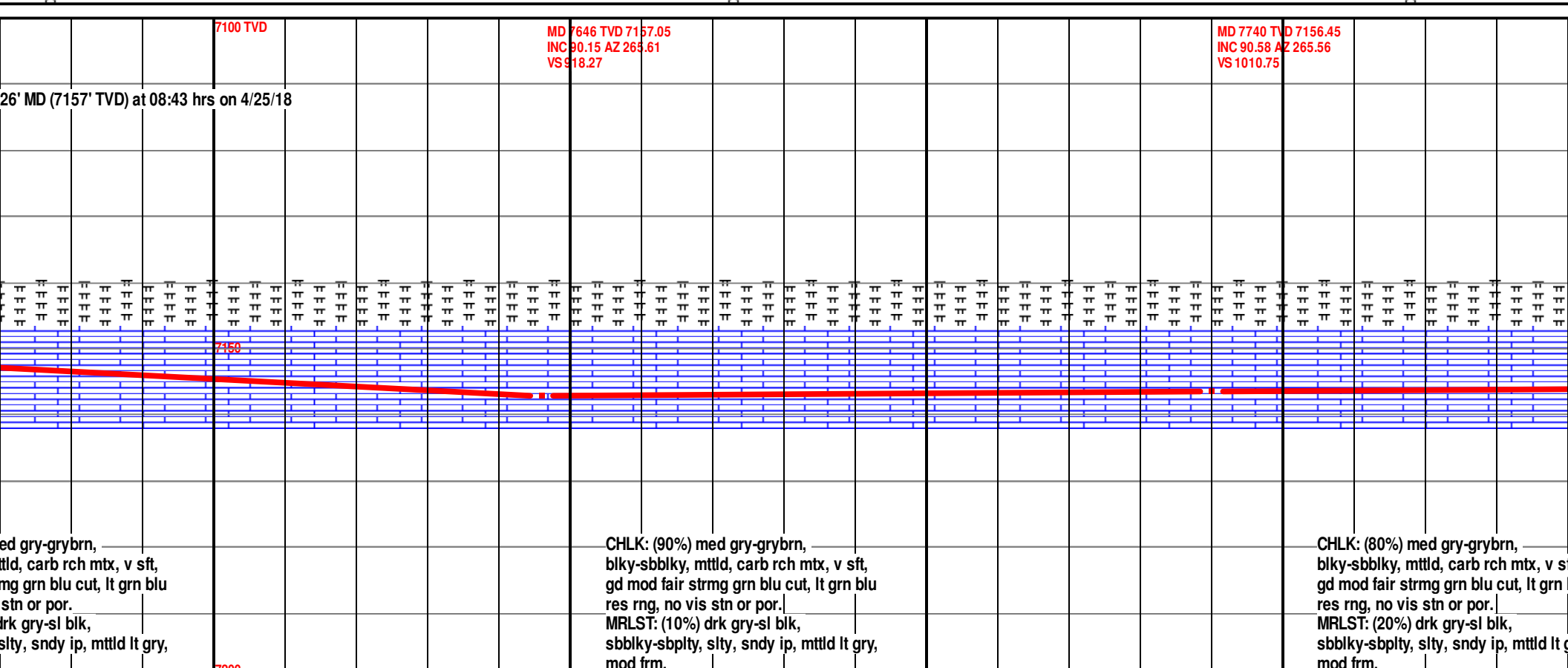
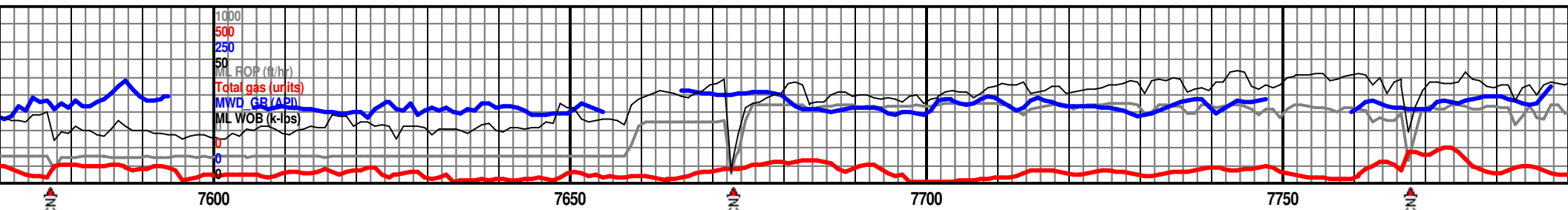
EVENTS

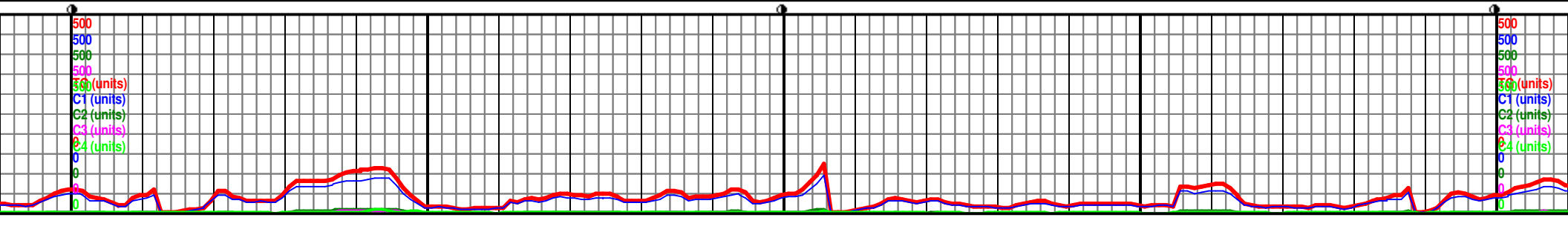
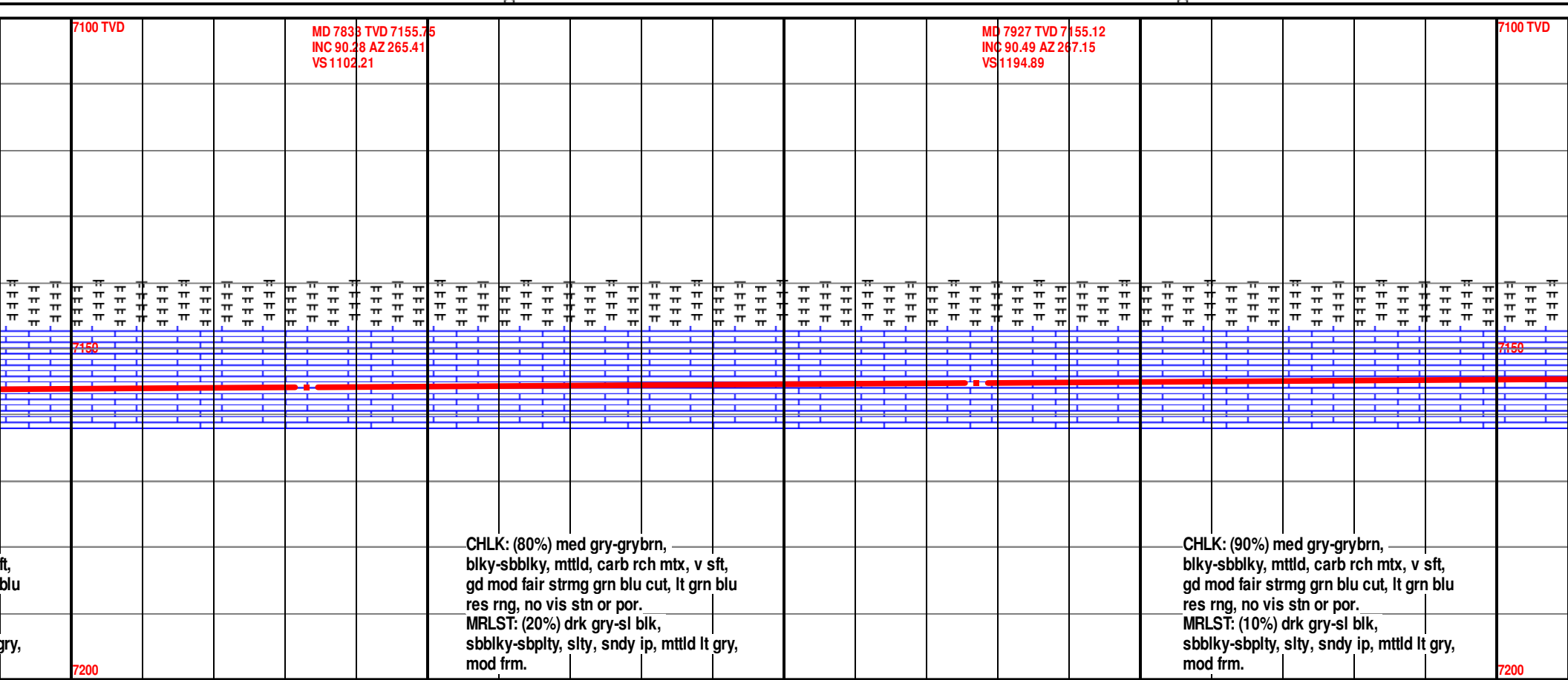
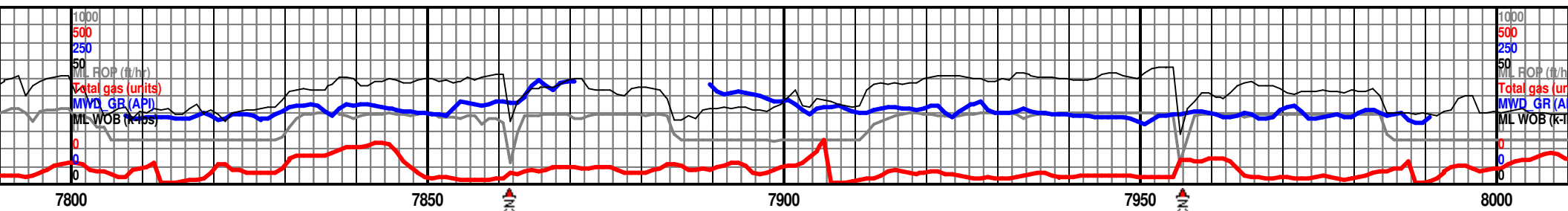
	Casing shoe_hzl
	Trip_point_1
	Off bottom
	conn
	Survey(mwd)
	Survey(red)
	bit

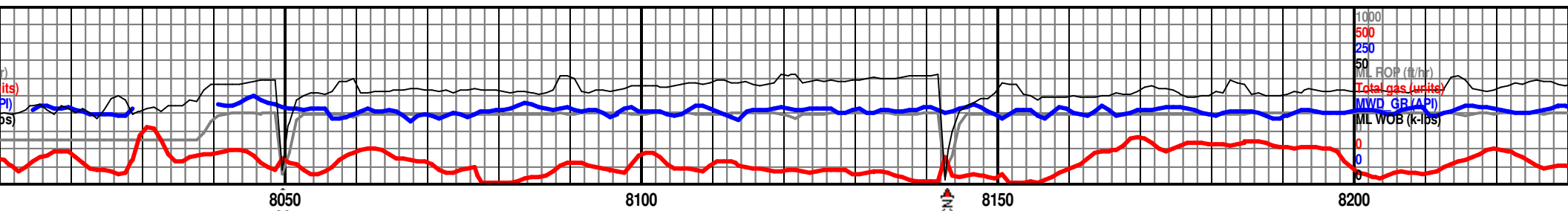












MD 8020 TVD 7154.57
INC 90.18 AZ 269.82
VS 1287.1

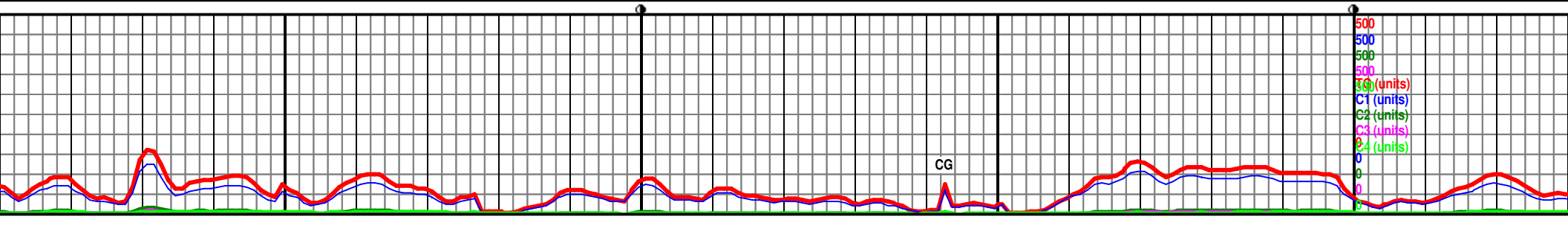
7100 TVD MD 8206 TVD 7154.04
INC 90.15 AZ 268.59
VS 1471.4

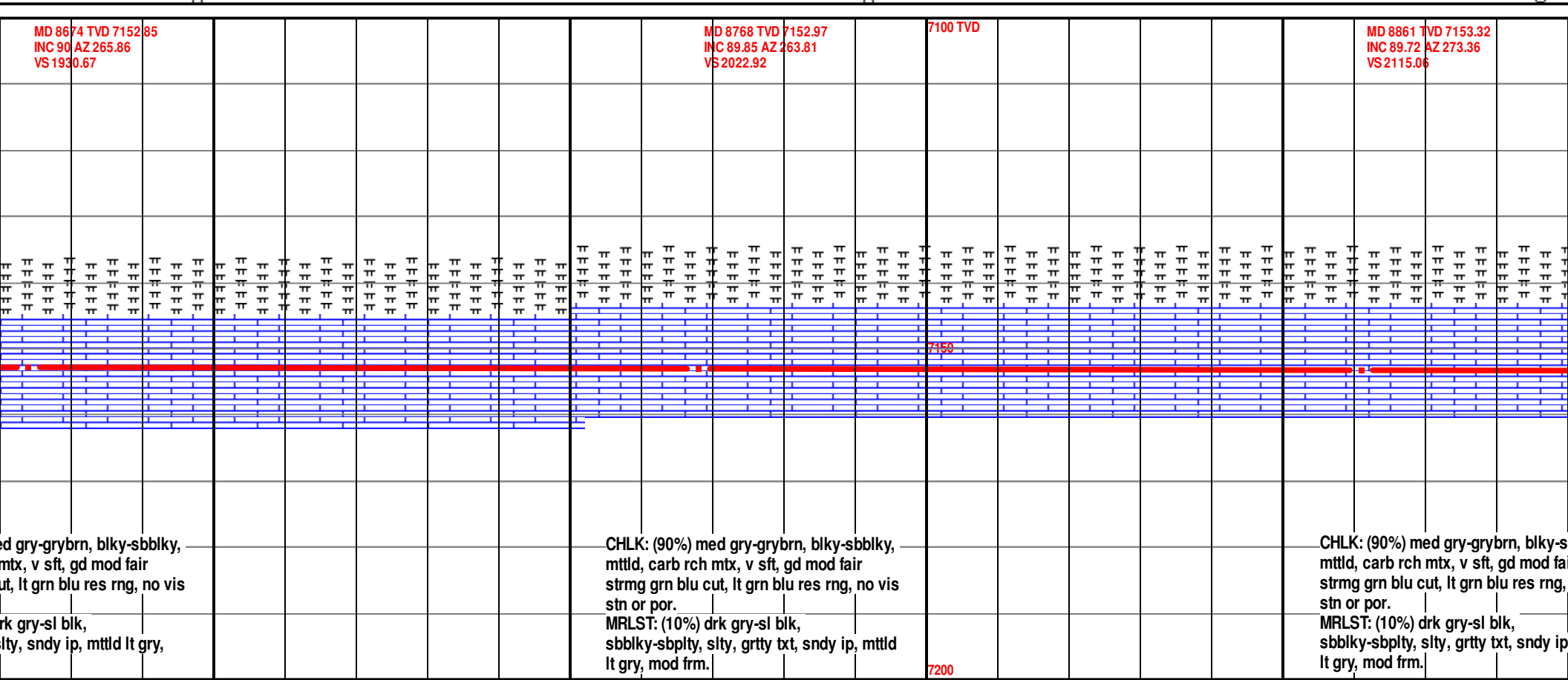
Nio B Marl

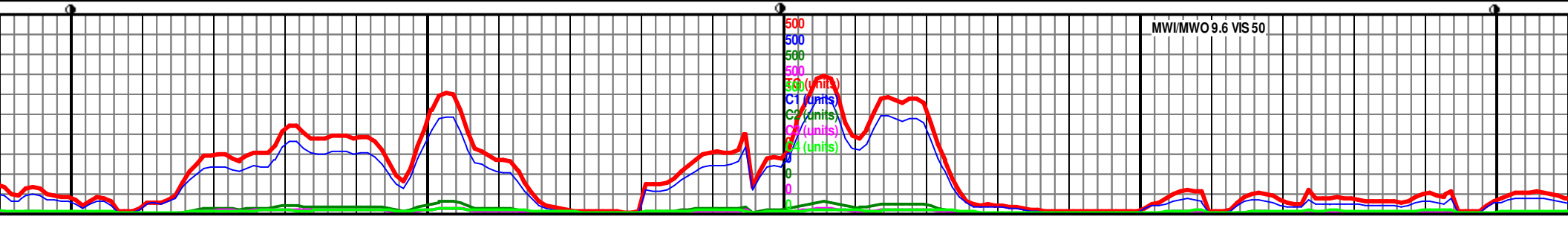
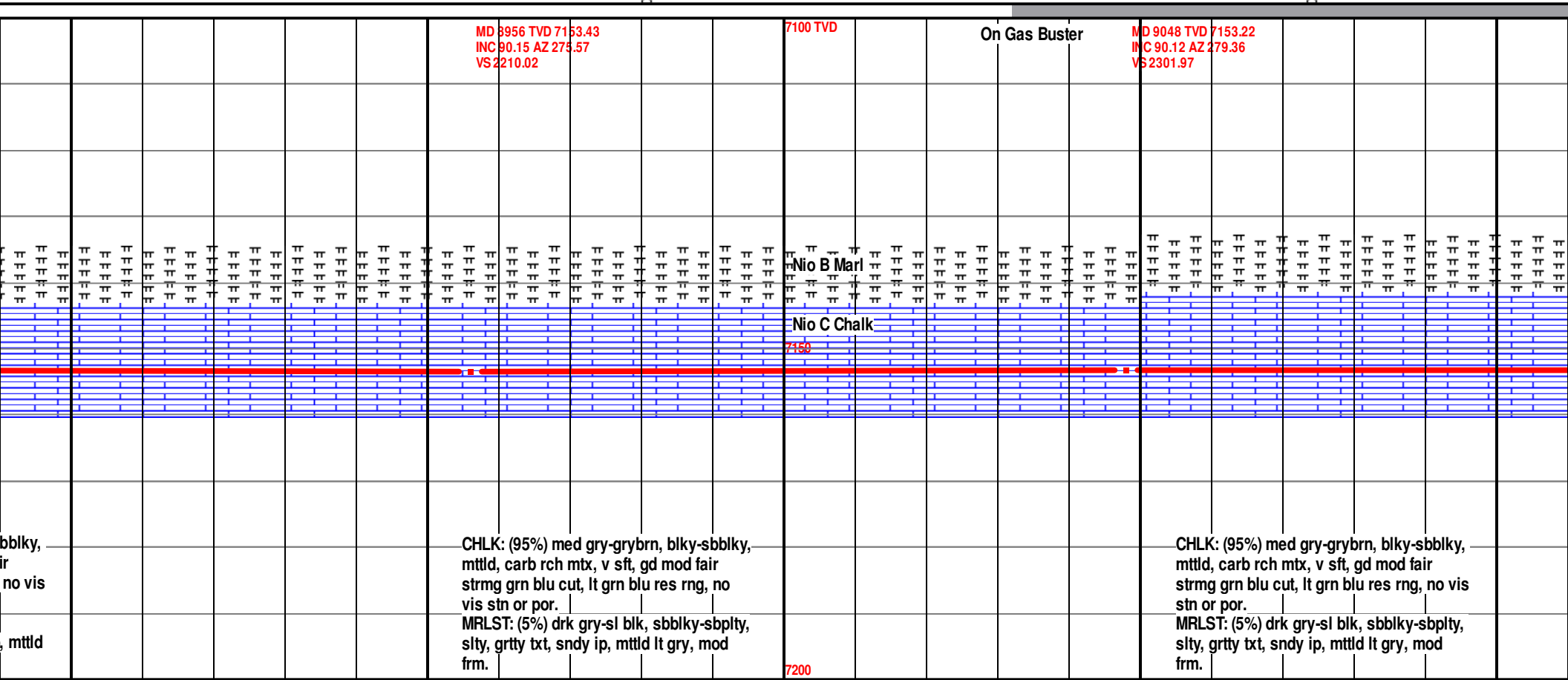
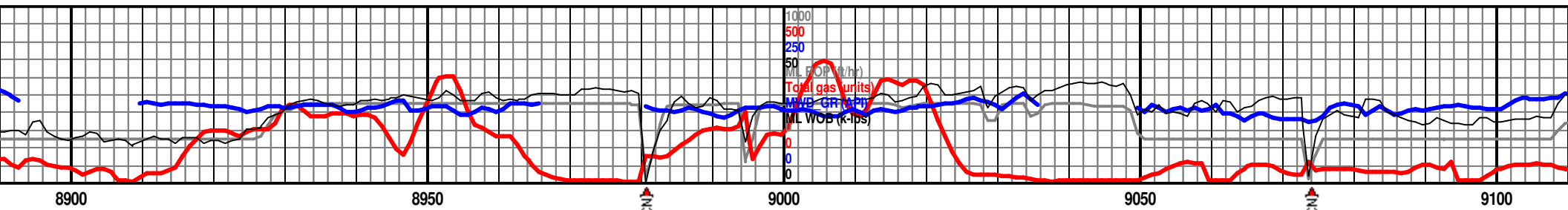
Nio C Chalk

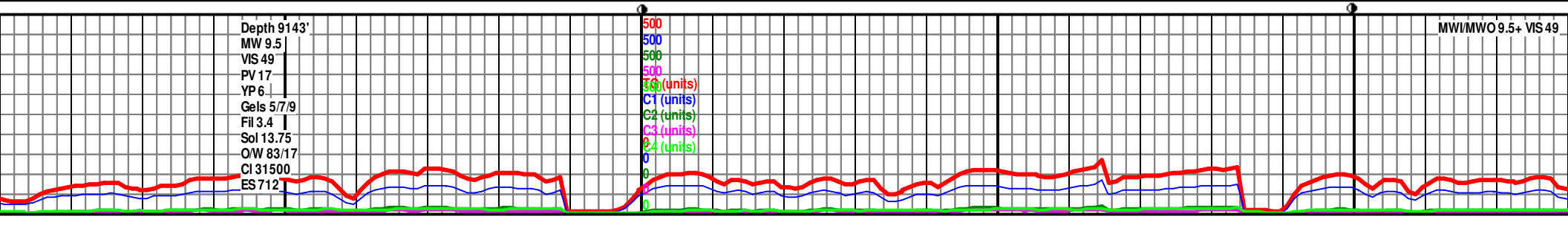
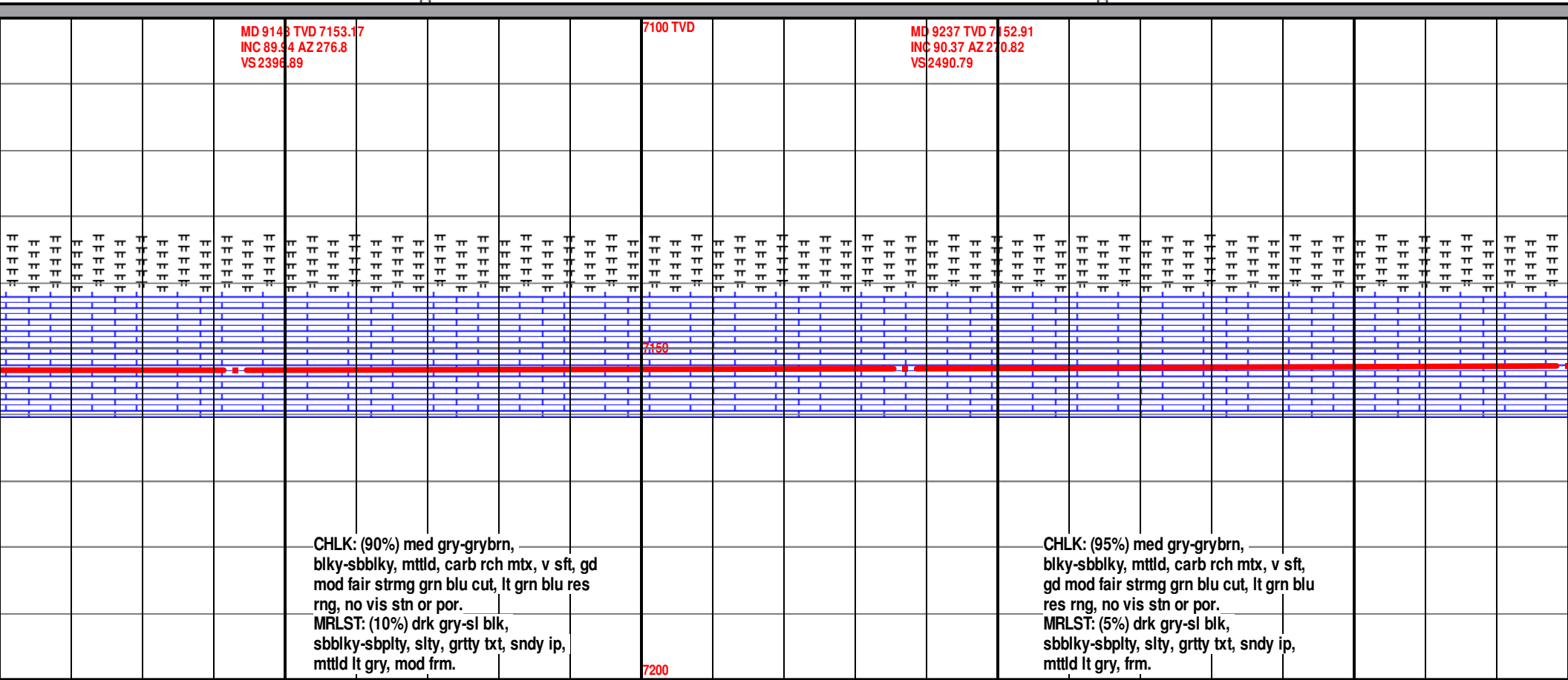
CHLK: (90%) med gry-grybrn,
blky-sbblky, mtld, carb rch mtx, v sft,
gd mod fair strmg grn blu cut, lt grn blu
res rng, no vis stn or por.
MRLST: (10%) drk gry-sl blk,
sbblky-sbply, slty, sndy ip, mtld lt gry,
mod frm.

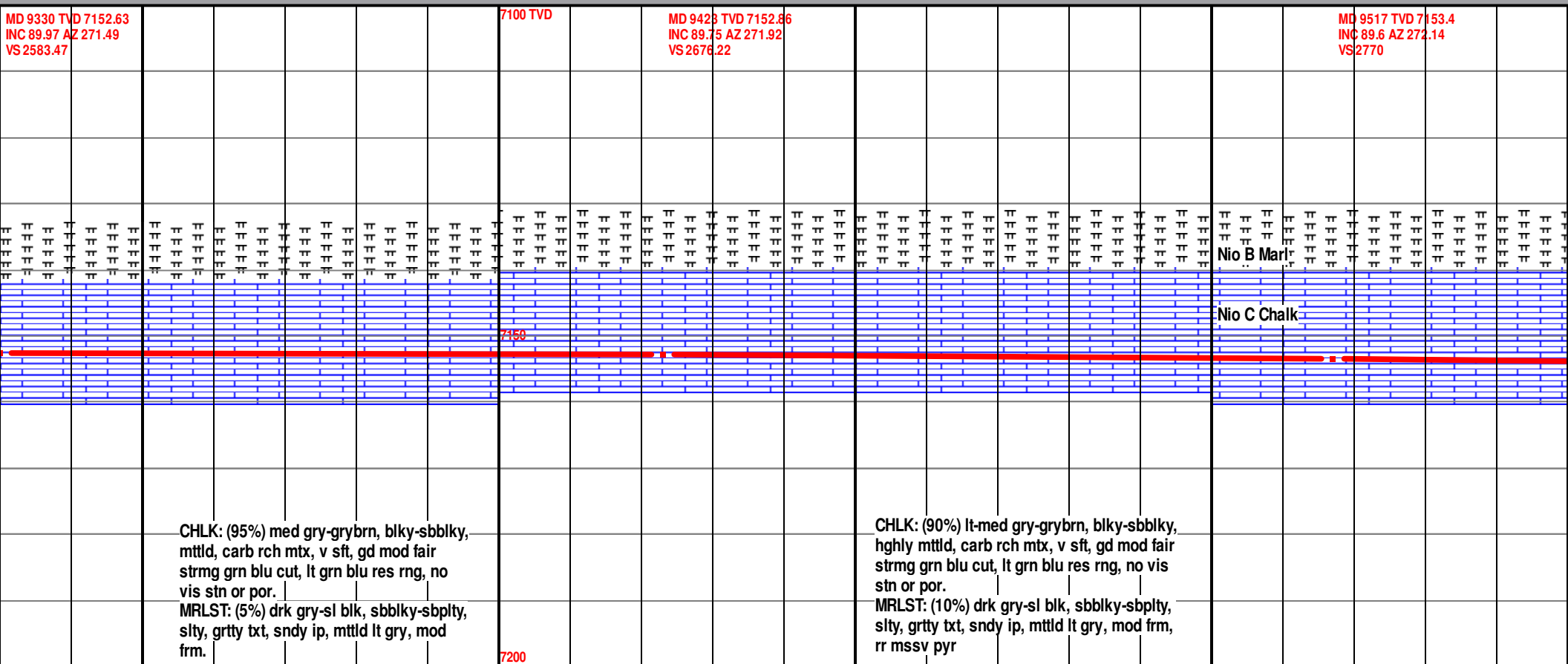
CHLK: (80%) med gry-grybrn,
blky-sbblky, mtld, carb rch mtx, v sft,
gd mod fair strmg grn blu cut, lt grn blu
res rng, no vis stn or por.
MRLST: (20%) drk gry-sl blk,
sbblky-sbply, slty, sndy ip, mtld lt gry,
mod frm.

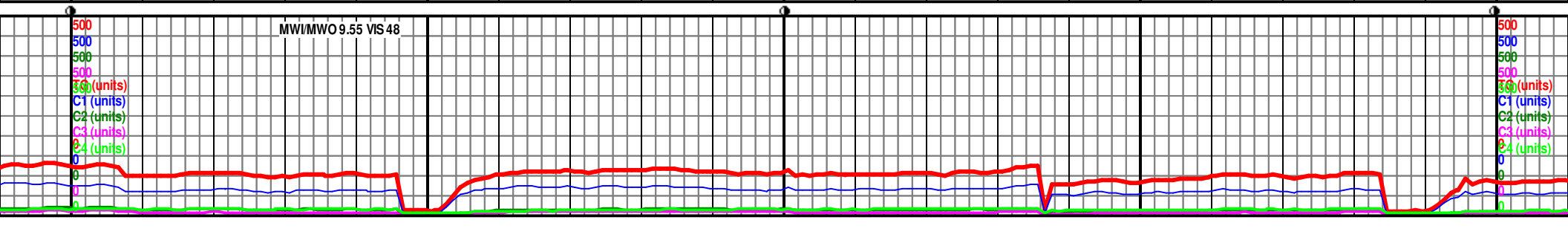
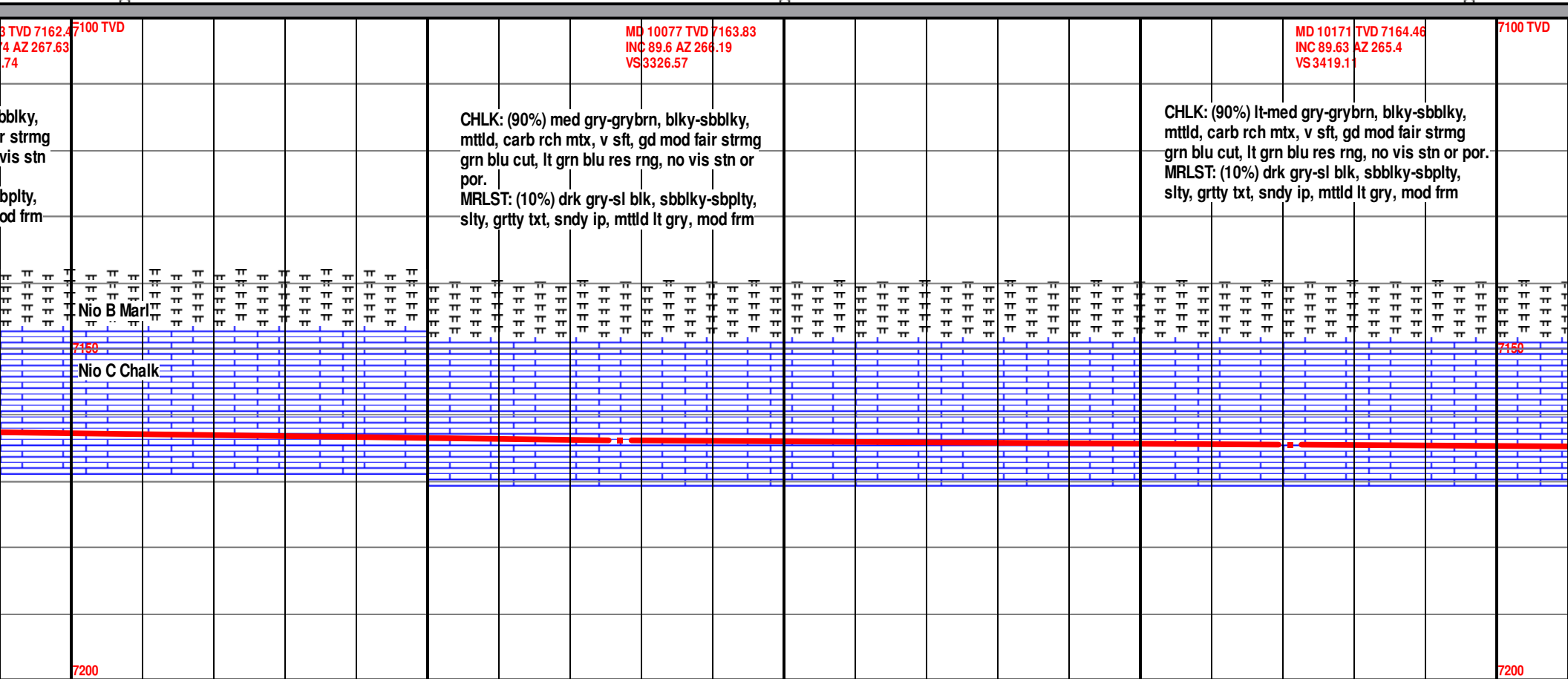
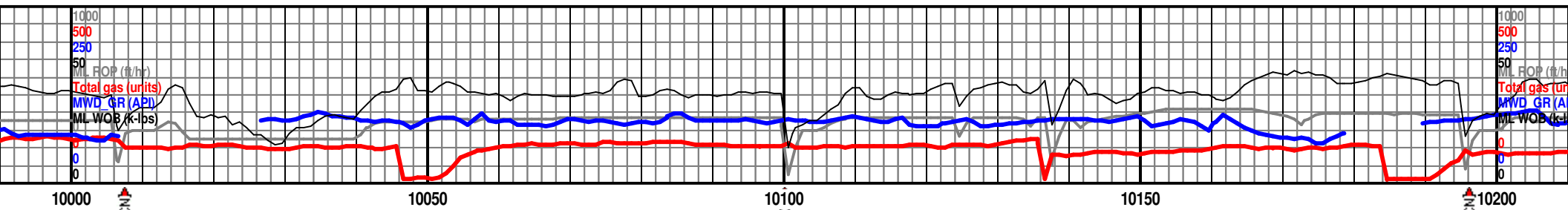


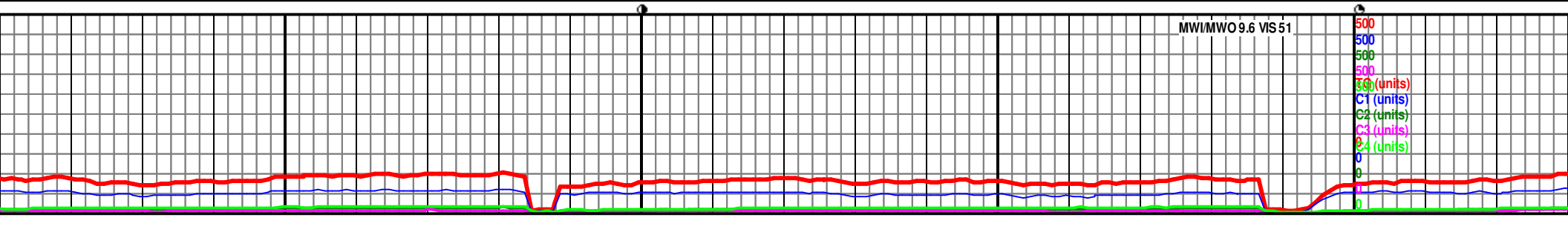
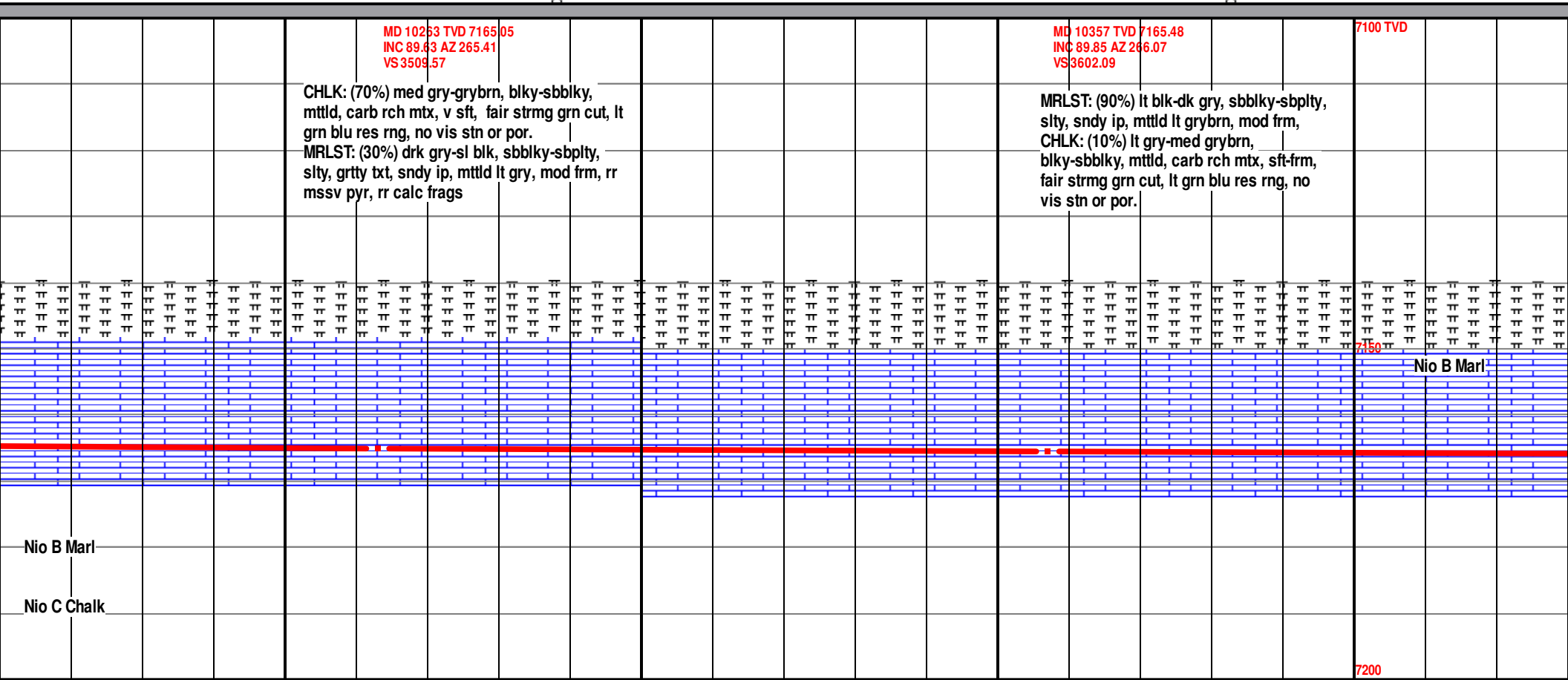
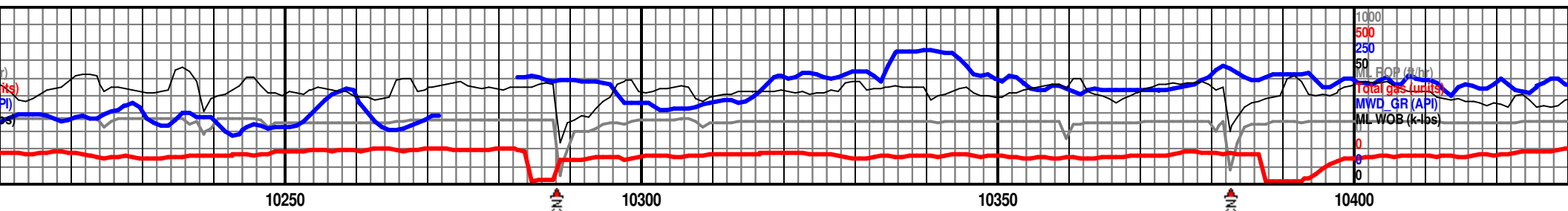


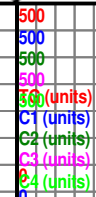
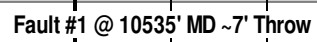
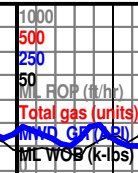


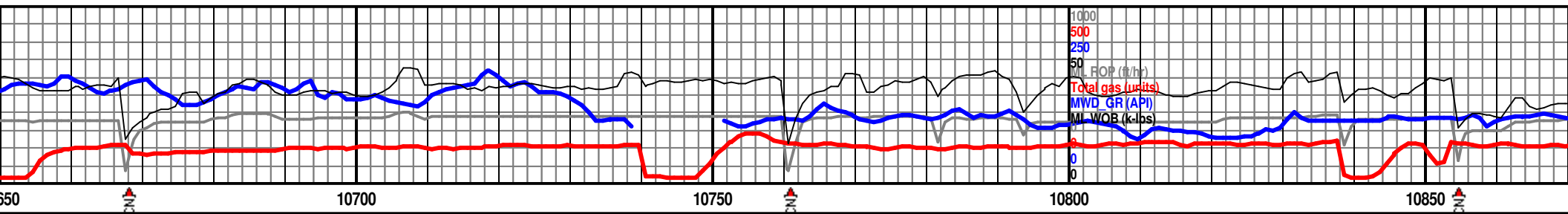












D 7167.44
70.39

MD 10731 TVD 7167.9
INC 89.82 AZ 270.9
VS 3973.29

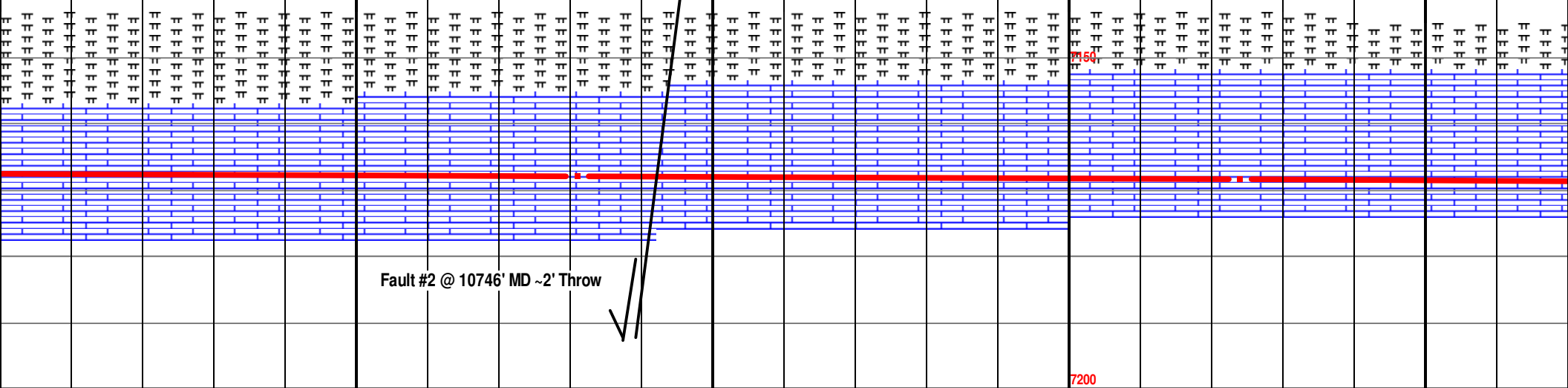
7100 TVD

MD 10824 TVD 7168.37
INC 89.6 AZ 271.1
VS 4065.95

CHLK: (60%) med gry-grybrn,
blky-sbblky, mtld, carb rch mtx, sft,
fair strmg grn blu cut, lt grn blu res rng,
no vis stn or por.
MRLST: (40%) drk gry-sl blk,
sbblky-sbply, slty, grtty txt, sndy ip,
mtld lt gry, mod frm

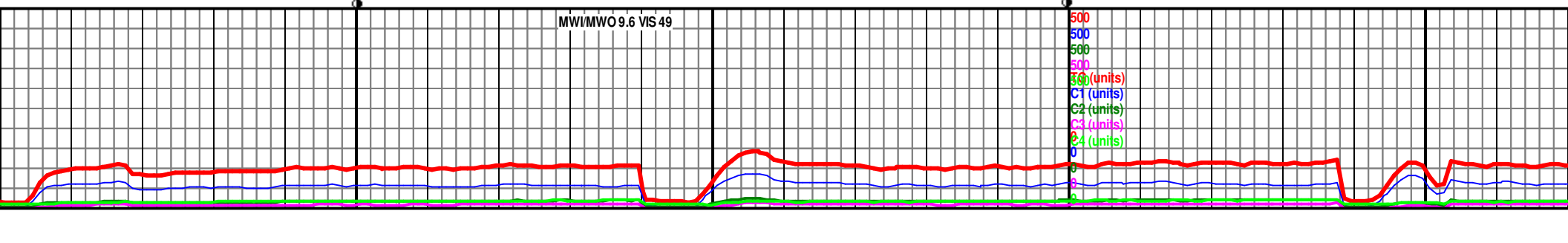
CHLK: (70%) med gry-grybrn,
blky-sbblky, mtld, carb rch mtx, sft,
fair strmg grn blu cut, lt grn blu res rng,
no vis stn or por.
MRLST: (30%) drk gry-sl blk,
sbblky-sbply, slty, grtty txt, sndy ip,
mtld lt gry, mod frm

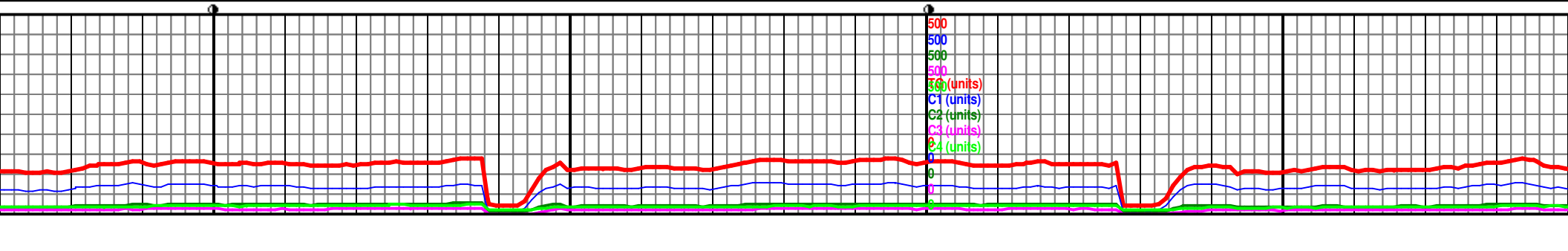
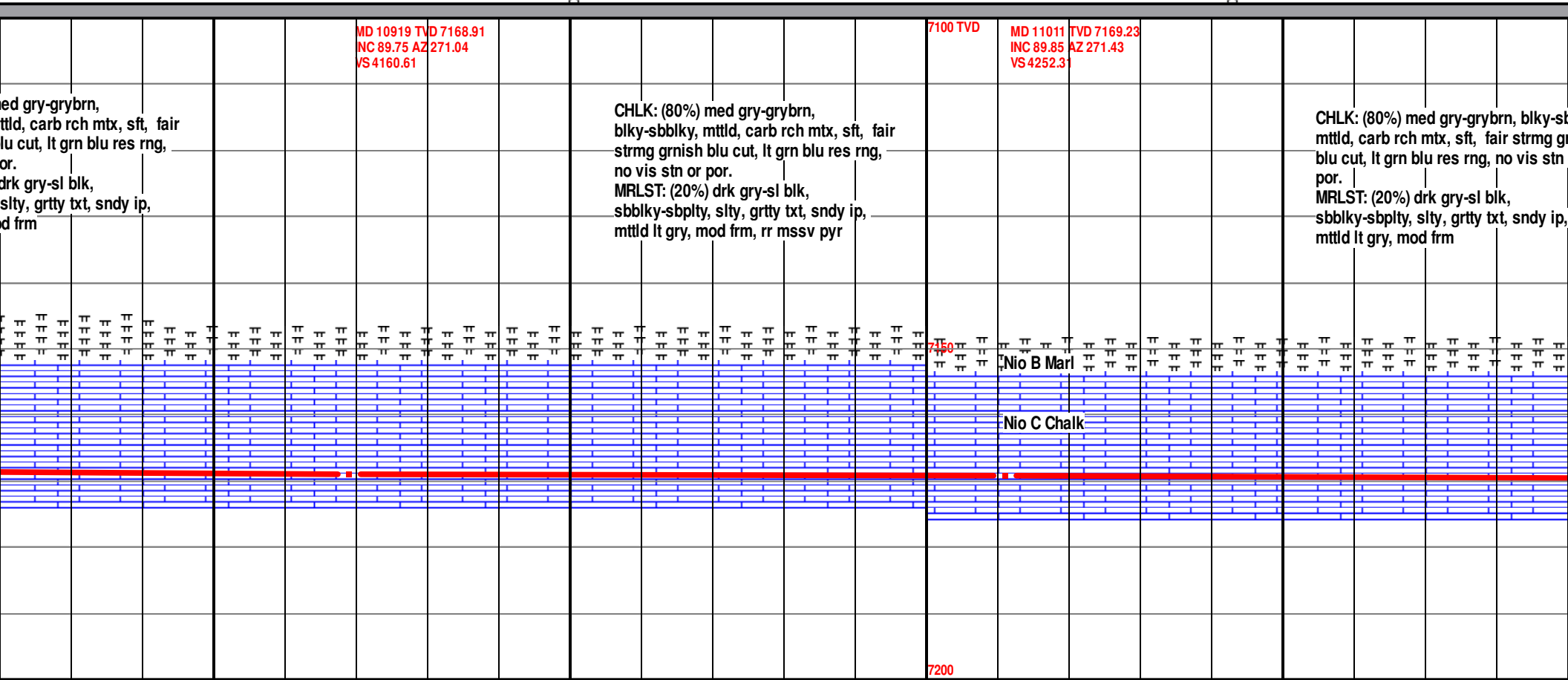
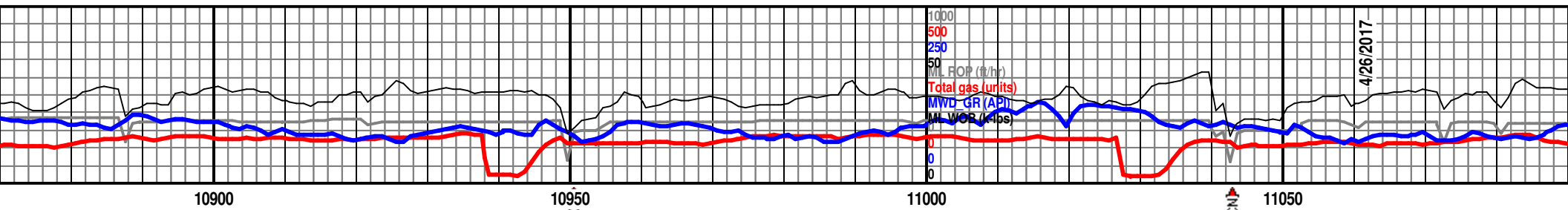
CHLK: (70%) m
blky-sbblky, m
strmg grnish b
no vis stn or p
MRLST: (30%)
sbblky-sbply,
mtld lt gry, mo

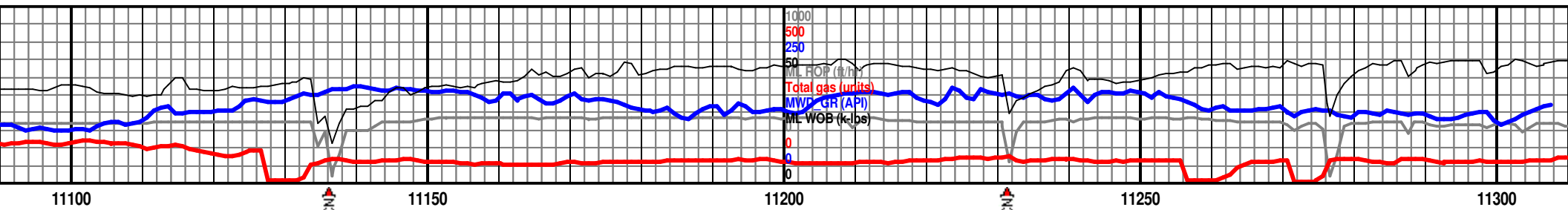


MWD/MWO 9.6 VIS 49

7200







MD 11105 TVD 7169.66
INC 89.63 AZ 271.65
VS 4346.04

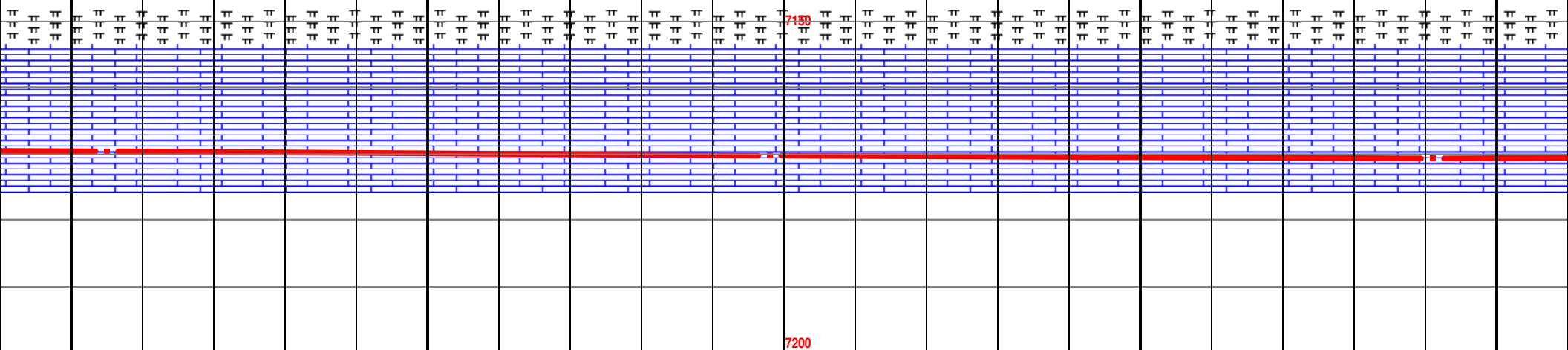
MD 11198 TVD 7170.21
INC 89.69 AZ 271.57
VS 4438.77

MD 11291 TVD 7170.76
INC 89.63 AZ 271.66
VS 4531.5

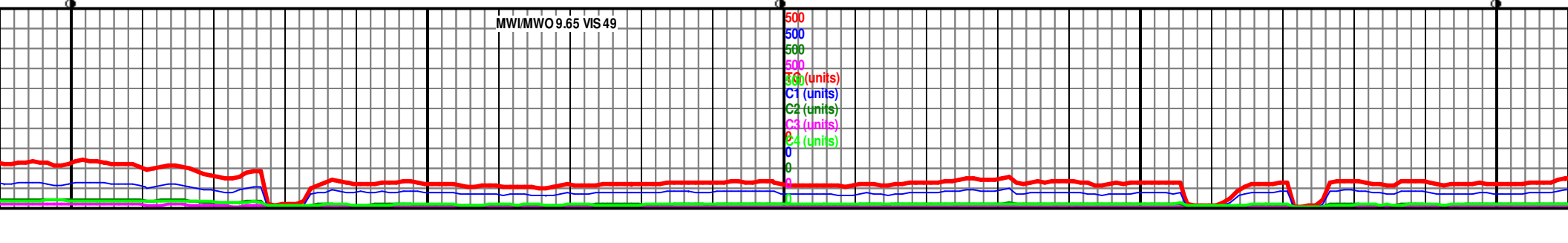
blky,
rnish
or

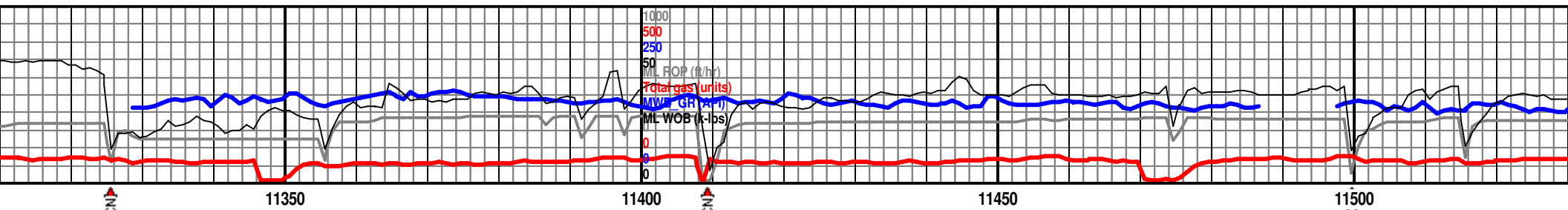
CHLK: (80%) med gry-grybrn, blky-sbblky,
mtld, carb rch mtx, sft, fair strmg grnish
blu cut, lt grn blu res rng, no vis stn or por.
MRLST: (20%) drk gry-sl blk, sbblky-sbplty,
slty, grtty txt, sndy ip, mtld lt gry, mod frm,
rr mssv pyr

CHLK: (70%) med gry-grybrn,
blky-sbblky, mtld, carb rch mtx, sft,
fair strmg grnish blu cut, lt grn blu res
rng, no vis stn or por.
MRLST: (30%) drk gry-sl blk,
sbblky-sbplty, slty, grtty txt, sndy ip,
mtld lt gry, mod frm



MW/MWO 9.65 VIS 49





MD 11384 TVD 7170.21 TVD
INC 91.05 AZ 271.56
VS 4624.25

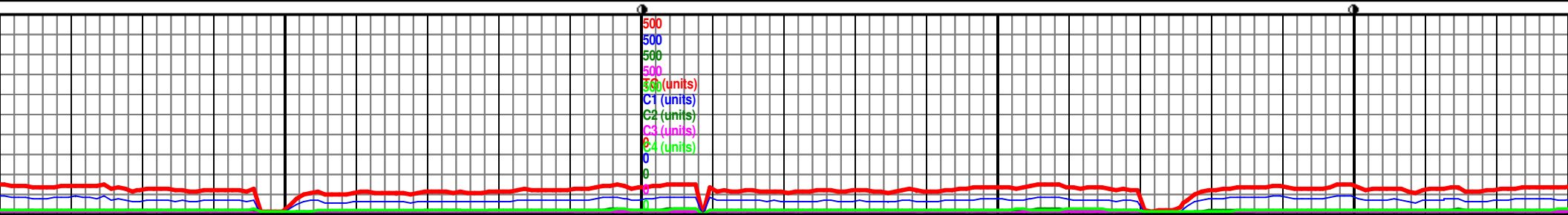
MD 11478 TVD 7168.42
INC 91.14 AZ 270.35
VS 4717.88

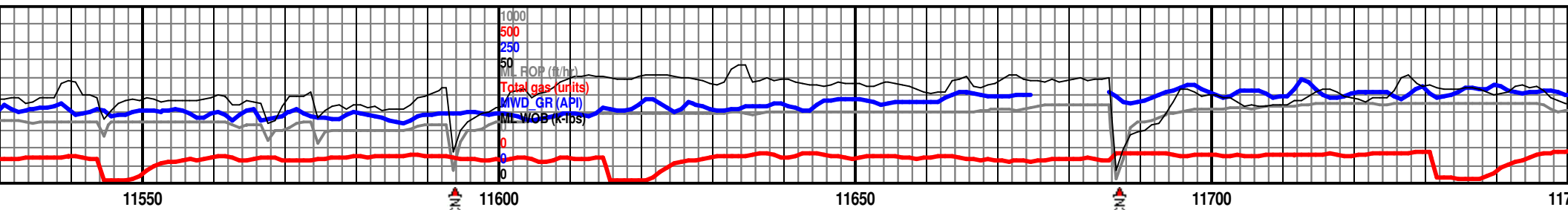
CHLK: (70%) med gry-grybrn,
blky-sbbkly, mttld, carb rch mtz, sft,
fair strmg grnsh blu cut, lt grn blu res
rng, no vis stn or por.
MRLST: (30%) drk gry-sl blk,
sbbkly-sbplty, slty, grtty txt, sndy ip,
mttld lt gry, mod frm

CHLK: (80%) med gry-grybrn,
blky-sbbkly, mttld, carb rch mtz, sft,
fair strmg grnsh blu cut, lt grn blu res
rng, no vis stn or por.
MRLST: (20%) drk gry-sl blk,
sbbkly-sbplty, slty, grtty txt, sndy ip,
mttld lt gry, mod frm

Nio B Marl

Nio C Chalk





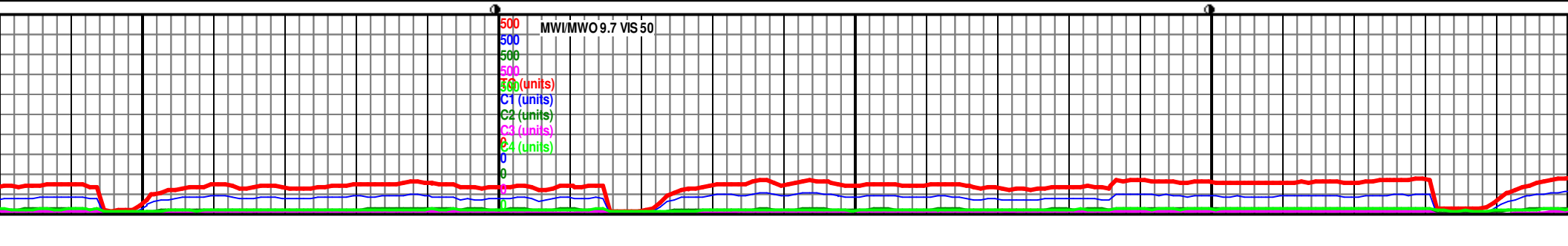
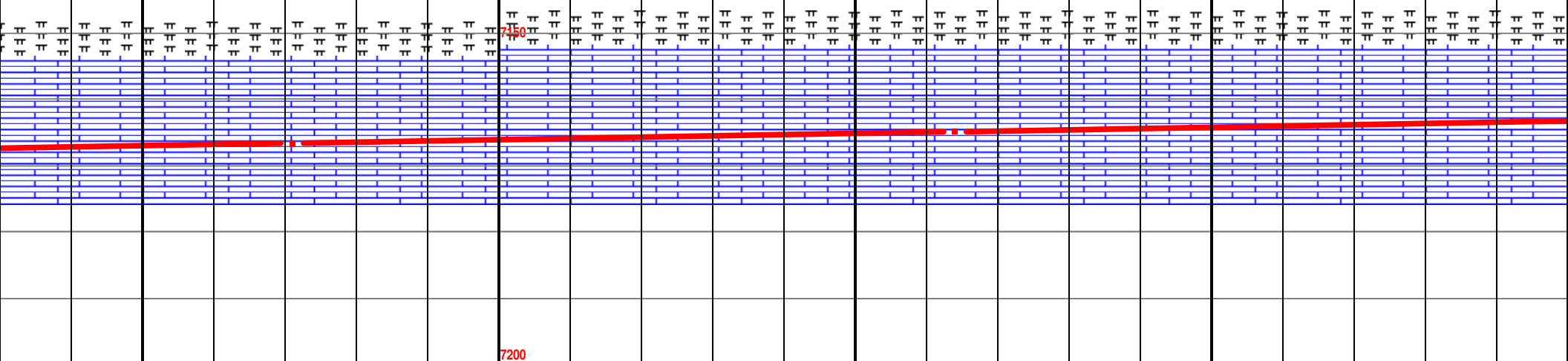
MD 11571 TVD 7166.66
INC 91.02 AZ 268.39
VS 4810.25

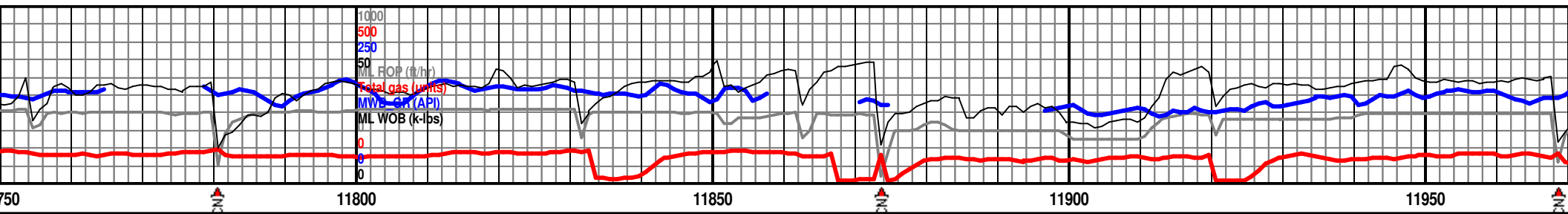
7100 TVD

MD 11564 TVD 7164.96
INC 91.08 AZ 268.21
VS 4902.42

CHLK: (70%) med gry-grybrn,
blky-sbbkly, mttld, carb rch mtx, sft,
fair strmg grnish blu cut, lt grn blu res
rng, no vis stn or por.
MRLST: (30%) drk gry-sl blk,
sbbkly-sbply, slty, grtty txt, sndy ip,
mttld lt gry, mod frm

CHLK: (80%) med gry-grybrn,
blky-sbbkly, mttld, carb rch mtx, sft,
fair strmg grnish blu cut, lt grn blu res
rng, no vis stn or por.
MRLST: (20%) drk gry-sl blk,
sbbkly-sbply, slty, grtty txt, sndy ip,
mttld lt gry, mod frm





MD 11756 TVD 7163.13
INC 91.2 AZ 270.26
VS 4993.78

7100 TVD

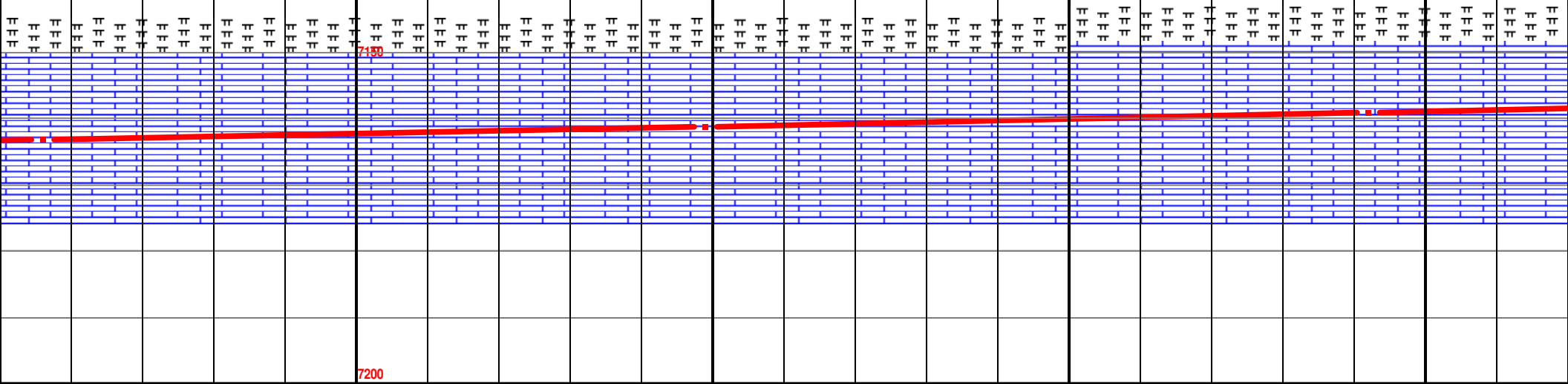
MD 11849 TVD 7161.2
INC 91.17 AZ 264.24
VS 5085.66

MD 11942 TVD 7159.1
INC 91.42 AZ 262.6
VS 5176.43

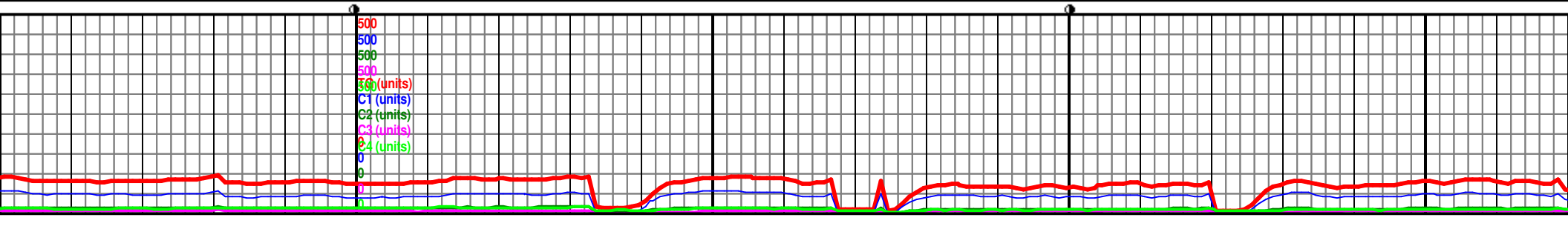
CHLK: (80%) med gry-grybrn,
blky-sbblky, mttld, carb rch mtx, sft,
fair strmg grnish blu cut, lt grn blu res
rng, no vis stn or por.
MRLST: (20%) drk gry-sl blk,
sbblky-sbplty, slty, grtty txt, sndy ip,
mttld lt gry, mod frm

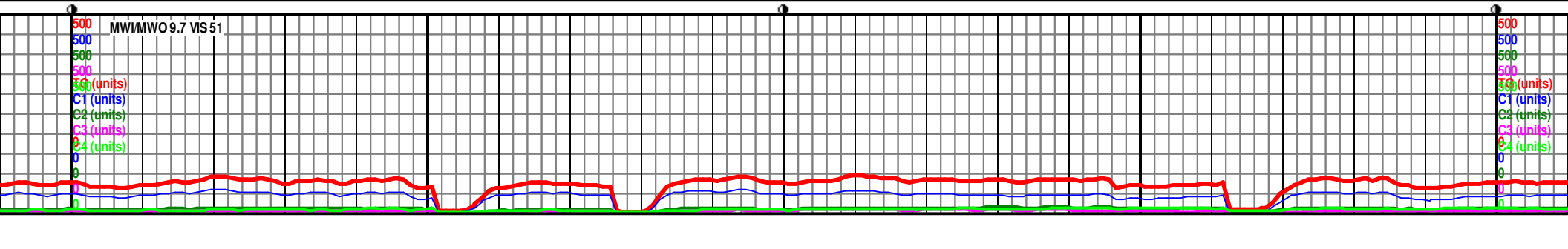
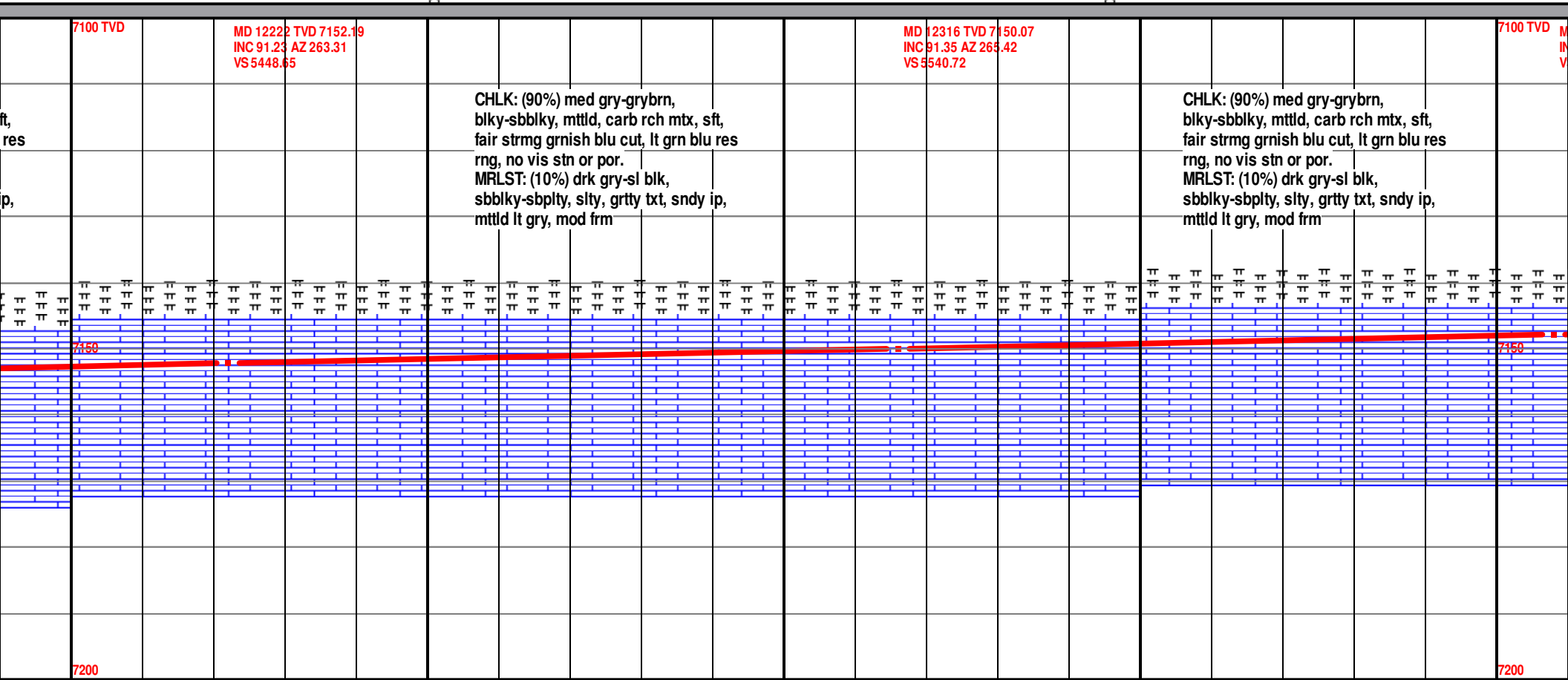
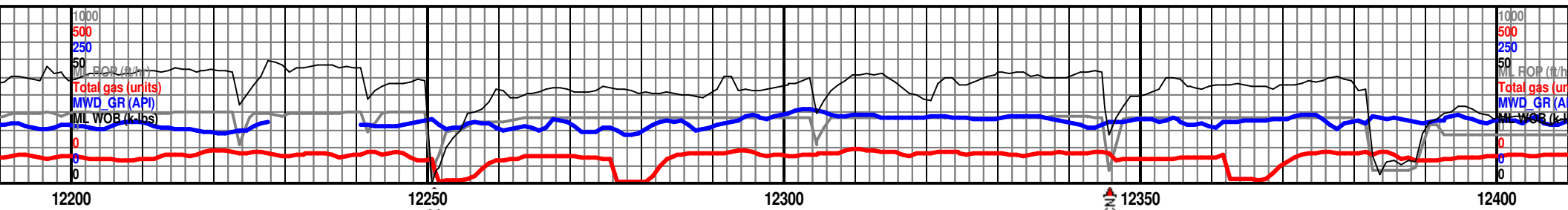
CHLK: (70%) med gry-grybrn,
blky-sbblky, mttld, carb rch mtx, sft,
fair strmg grnish blu cut, lt grn blu res
rng, no vis stn or por.
MRLST: (30%) drk gry-sl blk,
sbblky-sbplty, slty, grtty txt, sndy ip,
mttld lt gry, mod frm

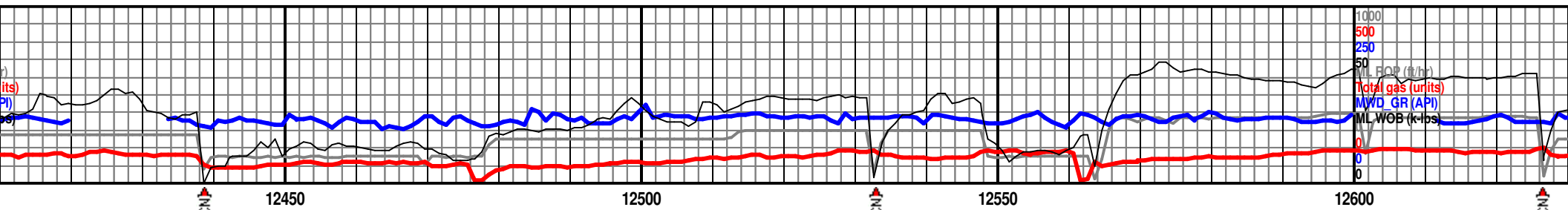
CHLK: (70%) m
blky-sbblky, m
fair strmg grnis
rng, no vis stn
MRLST: (30%) c
sbblky-sbplty,
mttld lt gry, mo



7200







D 12408 TVD 7147.82
IC 91.45 AZ 265.65
S 5631.19

MD 12501 TVD 7146.74
INC 89.88 AZ 274.83
VS 5723.63

MD 12595 TVD 7147.04
INC 89.75 AZ 276.62
VS 5817.63

CHLK: (80%) med gry-grybrn,
blky-sbblky, mttld, carb rch mtx, sft,
fair strmg grnish blu cut, lt grn blu res
rng, no vis stn or por.
MRLST: (20%) drk gry-sl blk,
sbblky-sbplty, slty, grtty txt, sndy ip,
mttld lt gry, mod frm

Nio B Marl

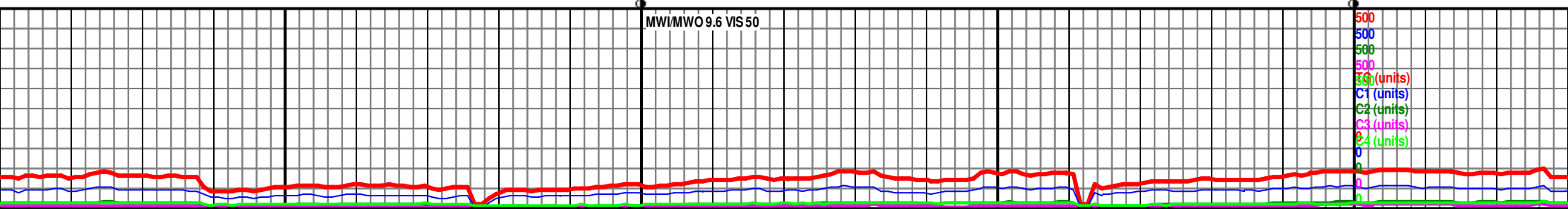
Nio C Chalk

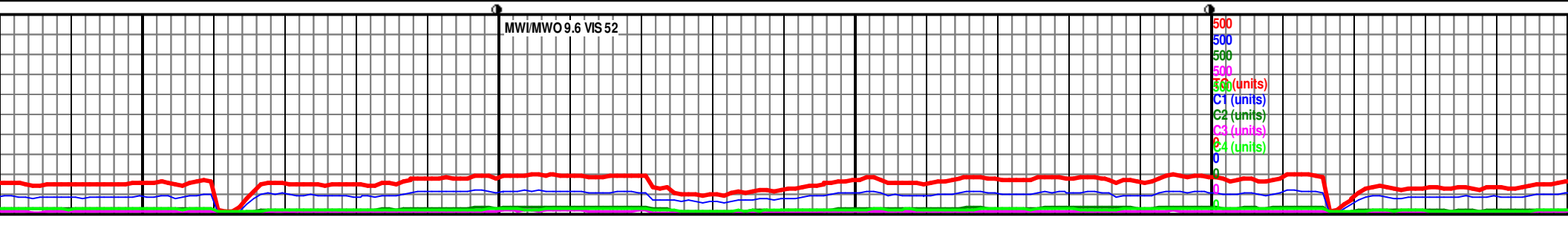
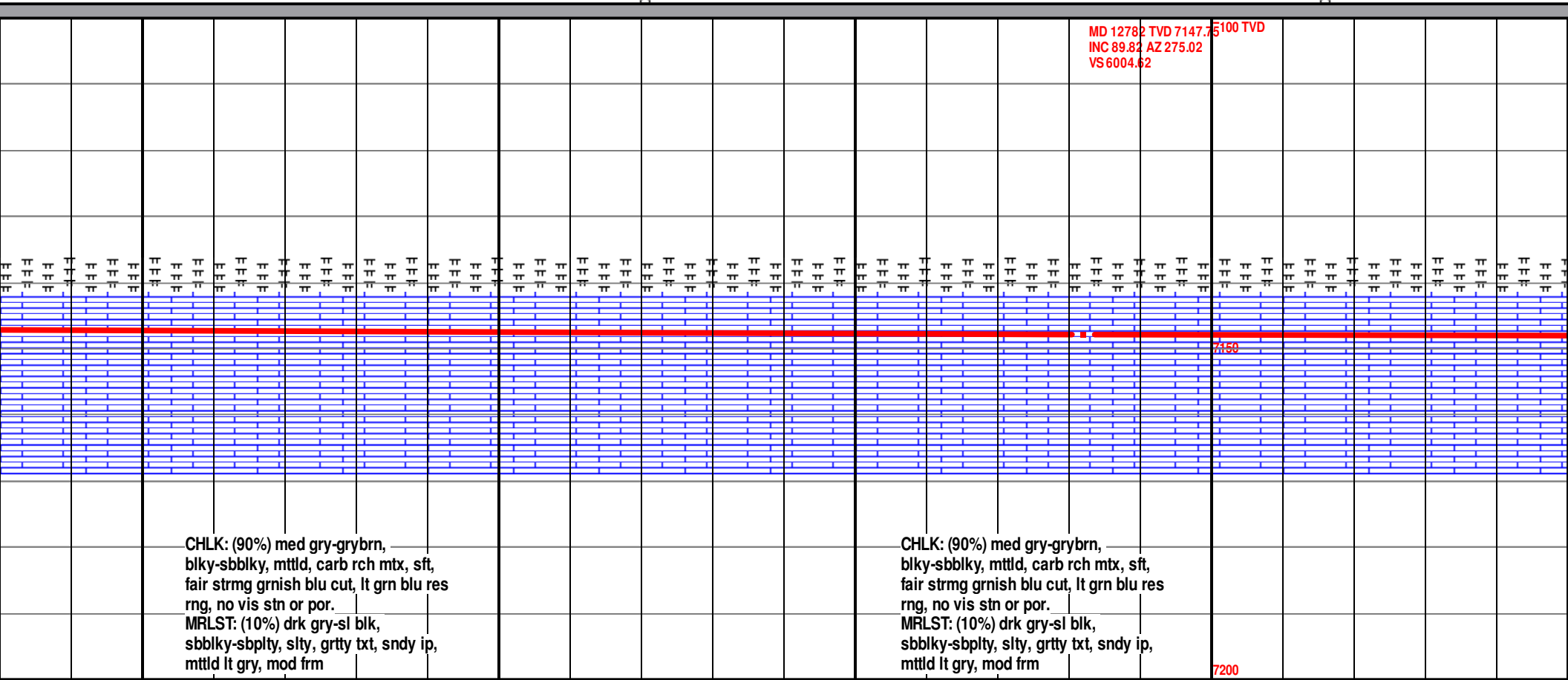
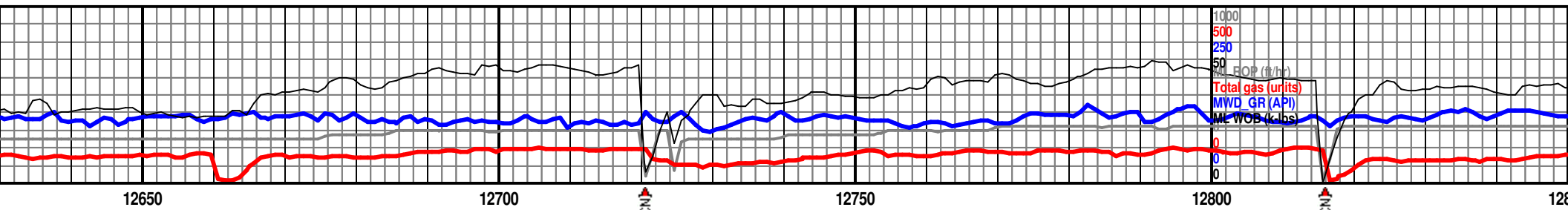
7150

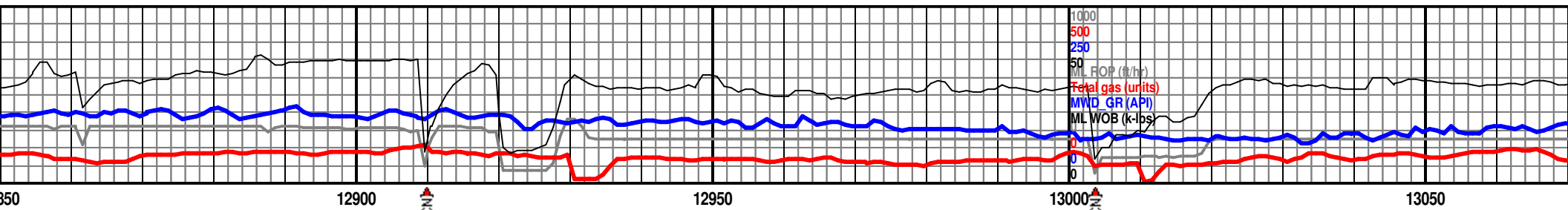
CHLK: (80%) med gry-grybrn,
blky-sbblky, mttld, carb rch mtx, sft,
fair strmg grnish blu cut, lt grn blu res
rng, no vis stn or por.
MRLST: (20%) drk gry-sl blk,
sbblky-sbplty, slty, grtty txt, sndy ip,
mttld lt gry, mod frm

7200

MW/MWO 9.6 VIS 50





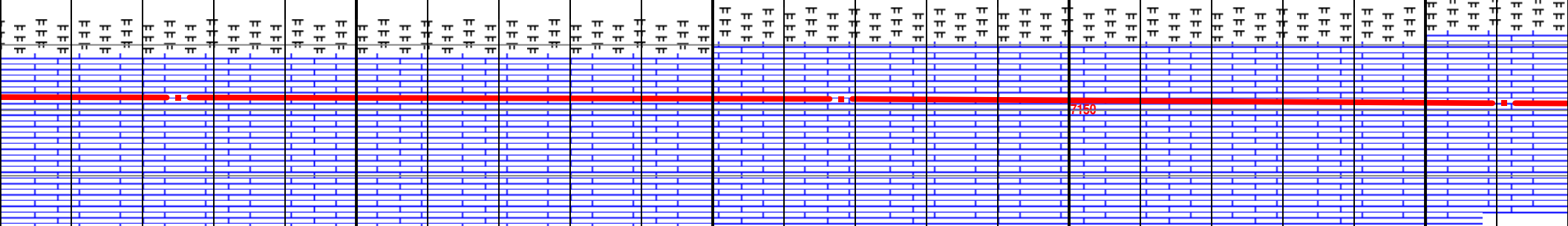


MD 12875 TVD 7147.97
INC 89.91 AZ 279.04
VS 6097.58

MD 12968 TVD 7148.34
INC 89.63 AZ 276.72
VS 6190.52

7100 TVD

MD 13061
INC 89.75
VS 6283.51

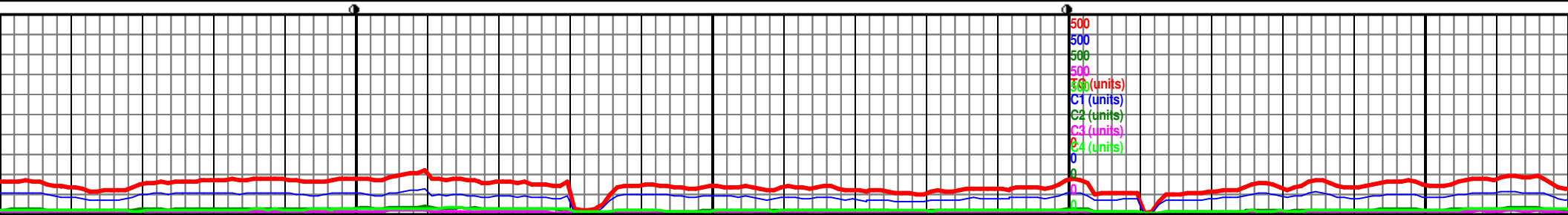


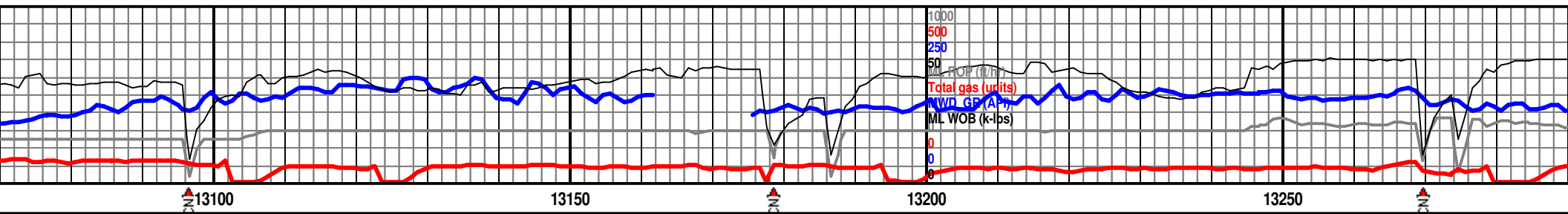
CHLK: (80%) med gry-grybrn,
blky-sbblky, mtld, carb rch mtx, sft,
fair strmg grnish blu cut, lt grn blu res
rng, no vis stn or por.
MRLST: (20%) drk gry-sl blk,
sbblky-sbplty, slty, grtty txt, sndy ip,
mtld lt gry, mod frm

CHLK: (80%) med gry-grybrn,
blky-sbblky, mtld, carb rch mtx, sft,
fair strmg grnish blu cut, lt grn blu res
rng, no vis stn or por.
MRLST: (20%) drk gry-sl blk,
sbblky-sbplty, slty, grtty txt, sndy ip,
mtld lt gry, mod frm

7200

CHLK: (70%) me
blky-sbblky, mtld
fair strmg grnish
rng, no vis stn or
MRLST: (30%) d
sbblky-sbplty, s
mtld lt gry, mod



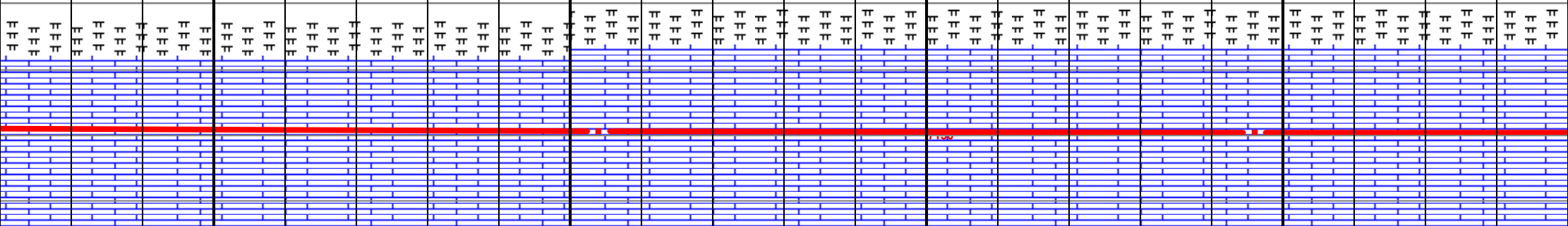


TVD 7148.84
AZ 275.51
2

MD 13154 TVD 7149.27
INC 89.72 AZ 274.24
VS 6376.5

7100 TVD

MD 13246 TVD 7149.52
INC 89.97 AZ 273.56
VS 6468.44

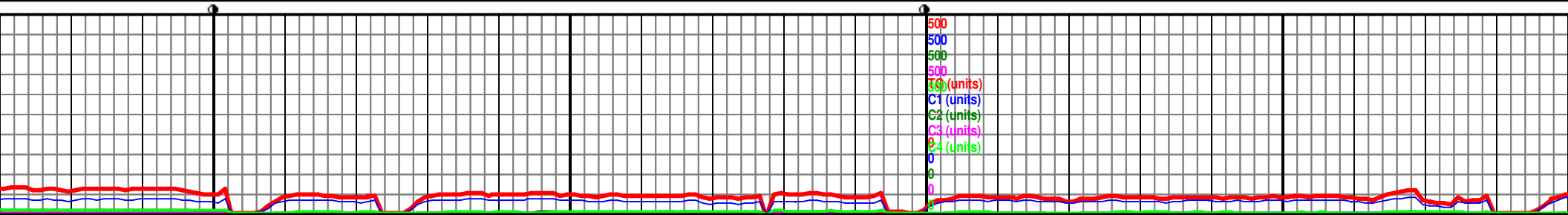


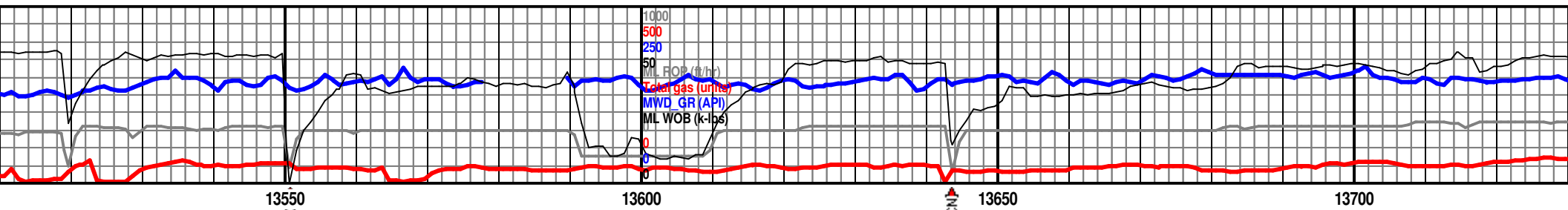
ed gry-grybrn,
ld, carb rch mtx, sft,
h blu cut, lt grn blu res
or por.
rk gry-sl blk,
lty, grtty txt, sndy ip,
l frm

CHLK: (60%) med gry-grybrn,
blky-sbblky, mttld, carb rch mtx, sft,
mod strmg grnish blu cut, lt grn blu res
rng, no vis stn or por.
MRLST: (40%) drk gry-sl blk,
sbblky-sbplty, slty, grtty txt, sndy ip,
mttld lt gry, mod frm, rr pyr

CHLK: (70%) med gry-grybrn,
blky-sbblky, mttld, carb rch mtx, sft,
fair strmg grnish blu cut, lt grn blu
rng, no vis stn or por.
MRLST: (30%) drk gry-sl blk,
sbblky-sbplty, slty, grtty txt, sndy ip,
mttld lt gry, mod frm

7200





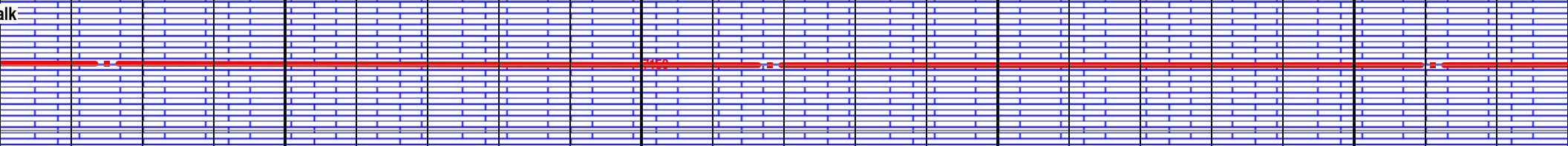
MD 13525 TVD 7149.88
INC 89.82 AZ 271.06
VS 6747.12

7100 TVD

MD 13618 TVD 7150.1
INC 89.91 AZ 266.75
VS 6839.4

MD 13711 TVD 7149.97
INC 90.25 AZ 268.08
VS 6931.38

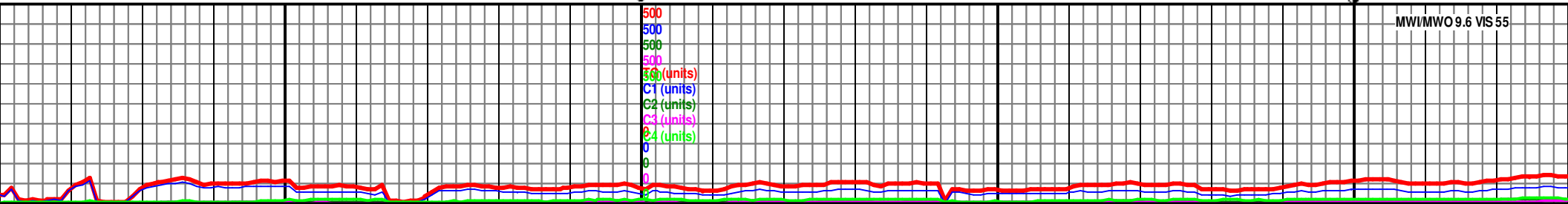
alk



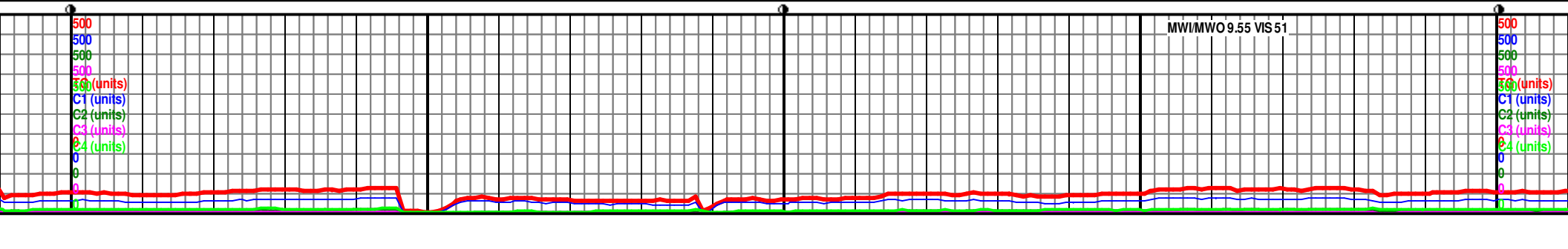
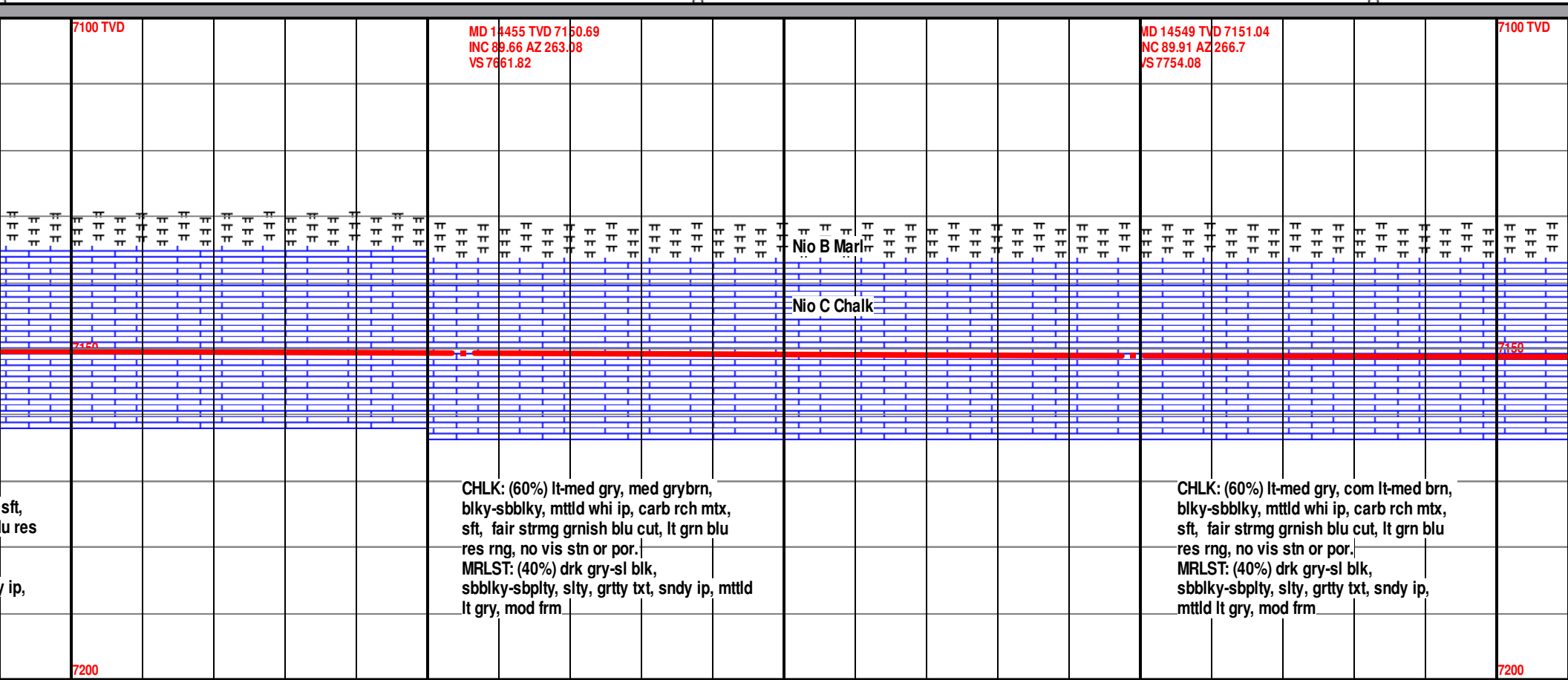
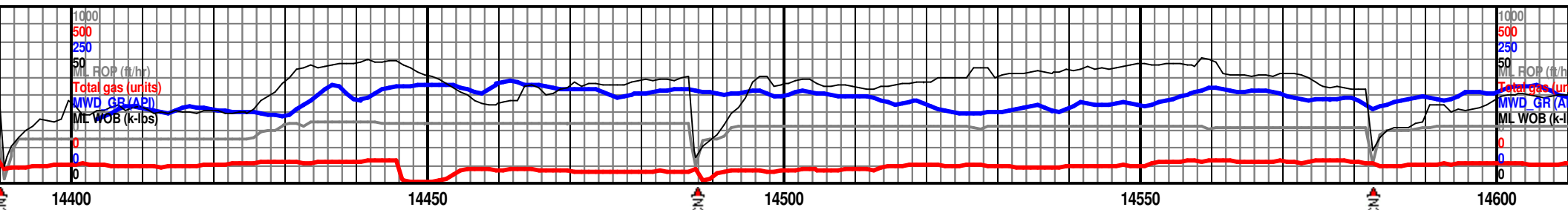
MRLST: (90%) drk gry-sl blk,
sbbkly-sbply, slty, grtty txt, sndy ip,
mtld lt gry, mod frm,
CHLK: (10%) med gry-grybrn,
blky-sbbkly, mtld, carb rch mtx, mod
sft, fair strmg grnish blu cut, lt grn blu
res rng, no vis stn or por, occ BENT

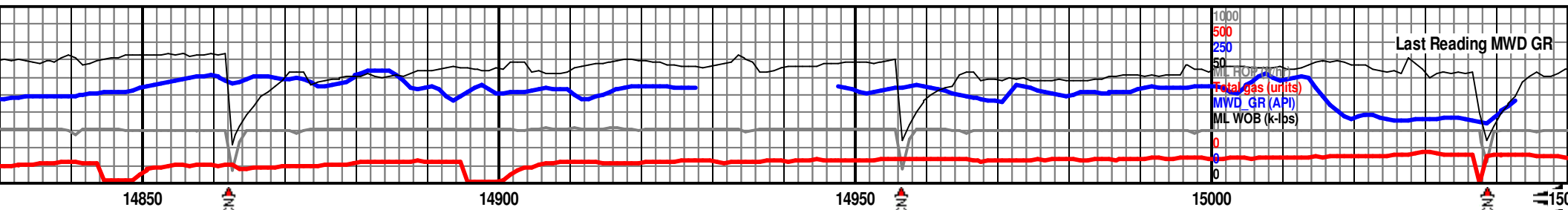
MRLST: (70%) drk gry-sl blk,
sbbkly-sbply, slty, grtty txt, sndy ip,
mtld lt gry, mod frm,
CHLK: (30%) med gry-grybrn,
blky-sbbkly, mtld, carb rch mtx, mod
sft, fair strmg grnish blu cut, lt grn blu
res rng, no vis stn or por, com BENT, rr
calc frags

7200



MW/MWO 9.6 VIS 55





14827 TVD 7152.04 INC 89.66 AZ 271.24 8030.56	MD 14920 TVD 7152.46 INC 89.82 AZ 272.41 VS 8123.33	7100 TVD	MD 15083 TVD 7152 INC 89.75 AZ 274.33 VS 8236.21
---	---	----------	--

