

HALLIBURTON

iCem[®] Service

SRC ENERGY CORPORATION

Harvesters State 30N-16B-M Production

Sincerely,
Meghan Jacobs

Legal Notice

Disclaimer:

All information in this report is provided subject to the terms and conditions which govern the services provided by Halliburton. Halliburton personnel use their best efforts in gathering information and their best judgment in interpreting it, but any interpretation, research, analysis or recommendation furnished by Halliburton are opinions based upon inferences from measurements and empirical relationships and assumptions, which inferences and empirical relationships and assumptions are not infallible, and with respect to which professionals in the industry may differ. iCem 3D Displacement results are used to understand how fluids intermix during a cement job. Simulation and 3D displacement results are not intended as and should not be used as a replacement for bond logs in determining top of cement. Current 3D model calculations are known to model more volume than the input volume for standard cases due to known calculation improvements required. For rotational cases, the modeled volume will be impacted by the same calculations impacting the standard cases, as well as additional constraints imposed to make the calculation time required operationally feasible. Therefore, until further notice, 3D displacement results should not be used for replacement of a bond log, or used as an identifier of top of cement. HALLIBURTON IS UNABLE TO GUARANTEE THE ACCURACY OF ANY CHART INTERPRETATION, RESEARCH ANALYSIS, OR JOB RECOMMENDATION and any interpretation or recommendation is not for use of or reliance upon by any third party. The customer has full responsibility for any of its decisions which are based on the information provided in this report.

Table of Contents

1.0 Cementing Job Summary 4

 1.1 Executive Summary4

2.0 Real-Time Job Summary 7

 2.1 Job Event Log7

3.0 Attachments..... 9

 3.1 Harvesters State 30N-16B-M – Job Chart with Events9

 3.2 Harvesters State 30N-16B-M – Job Chart without Events10

1.0 Cementing Job Summary

1.1 Executive Summary

Halliburton appreciates the opportunity to perform the cementing services on the **Harvesters State 30N-16B-M** cement **Production** casing job. A pre-job safety meeting was held before the job where details of the job were discussed, potential safety hazards were reviewed, and environmental compliance procedures were outlined.

Approximately 10bbbls of cement returned to surface.

Halliburton maintains a continuous quality improvement process and appreciates any comments or suggestions that you may have. Halliburton again thanks you for the opportunity to perform service work on this well. We hope to be your solutions provider for future projects.

Respectfully,

Halliburton [Ft. Lupton]

HALLIBURTON

*Cementing Job Summary**The Road to Excellence Starts with Safety*

Sold To #: 359915		Ship To #: 3858717		Quote #:		Sales Order #: 0904791010				
Customer: SRC ENERGY INC-EBUS				Customer Rep: Lovell Young						
Well Name: HARVESTERS STATE		Well #: 30N-16B-M		API/UWI #: 05-123-46354-00						
Field: WATTENBERG		City (SAP): LUCERNE		County/Parish: WELD		State: COLORADO				
Legal Description: SW NE-15-6N-66W-1613FNL-2333FEL										
Contractor: Precision				Rig/Platform Name/Num: Precision 462						
Job BOM: 7523 7523										
Well Type: HORIZONTAL OIL										
Sales Person: HALAMERICA\HB41307				Srv Supervisor: Adam Covington						
Job										
Formation Name										
Formation Depth (MD)		Top		Bottom						
Form Type				BHST						
Job depth MD		14986ft		Job Depth TVD						
Water Depth				Wk Ht Above Floor						
Perforation Depth (MD)		From		To						
Well Data										
Description	New / Used	Size in	ID in	Weight lbm/ft	Thread	Grade	Top MD ft	Bottom MD ft	Top TVD ft	Bottom TVD ft
Casing		9.625	8.921	36	LTC	J-55	0	1822	0	1822
Casing	0	5.5	4.778	20	BTC	P-110	0	14986	0	0
Open Hole Section			8.5				1822	14995		
Tools and Accessories										
Type	Size in	Qty	Make	Depth ft		Type	Size in	Qty	Make	
Guide Shoe	5.5			14986		Top Plug	5.5	1	WTF	
Float Shoe	5.5					Bottom Plug	5.5	1	WTF	
Float Collar	5.5					SSR plug set	5.5		HES	
Insert Float	5.5					Plug Container	5.5	1	HES	
Stage Tool	5.5					Centralizers	5.5	222	WTF	
Fluid Data										
Stage/Plug #: 1										
Fluid #	Stage Type	Fluid Name	Qty	Qty UoM	Mixing Density lbm/gal	Yield ft3/sack	Mix Fluid Gal	Rate bbl/min	Total Mix Fluid Gal	
1	Tuned Spacer III	Tuned Spacer III	40	bbl	11.5	3.8	23.8	6		
Fluid #	Stage Type	Fluid Name	Qty	Qty UoM	Mixing Density lbm/gal	Yield ft3/sack	Mix Fluid Gal	Rate bbl/min	Total Mix Fluid Gal	
2	ElastiCem LEAD	ELASTICEM (TM) SYSTEM	1042	sack	13.2	1.57	7.54	8	7.54	

HALLIBURTON

Cementing Job Summary

Fluid #	Stage Type	Fluid Name	Qty	Qty UoM	Mixing Density lbm/gal	Yield ft3/sack	Mix Fluid Gal	Rate bbl/min	Total Mix Fluid Gal
3	NeoCem	NeoCem TM	983	sack	13.2	2.04	9.77	8	9.77
Fluid #	Stage Type	Fluid Name	Qty	Qty UoM	Mixing Density lbm/gal	Yield ft3/sack	Mix Fluid Gal	Rate bbl/min	Total Mix Fluid Gal
4	MMCR Displacement	MMCR Displacement	0	bbl	8.34			10	
0.2850 gal/bbl		MICRO MATRIX CEMENT RETARDER, 5 GAL PAIL (100003781)							
Fluid #	Stage Type	Fluid Name	Qty	Qty UoM	Mixing Density lbm/gal	Yield ft3/sack	Mix Fluid Gal	Rate bbl/min	Total Mix Fluid Gal
5	Water	Water	0	bbl	8.33			8	
0.0655 gal/bbl		CLA-WEB - BULK (101985043)							
Cement Left In Pipe		Amount	50 ft		Reason			Shoe Joint	
Comment Estimated top of tail is at 6,259.65. 10 bbls of cement back to surface.									

2.0 Real-Time Job Summary

2.1 Job Event Log

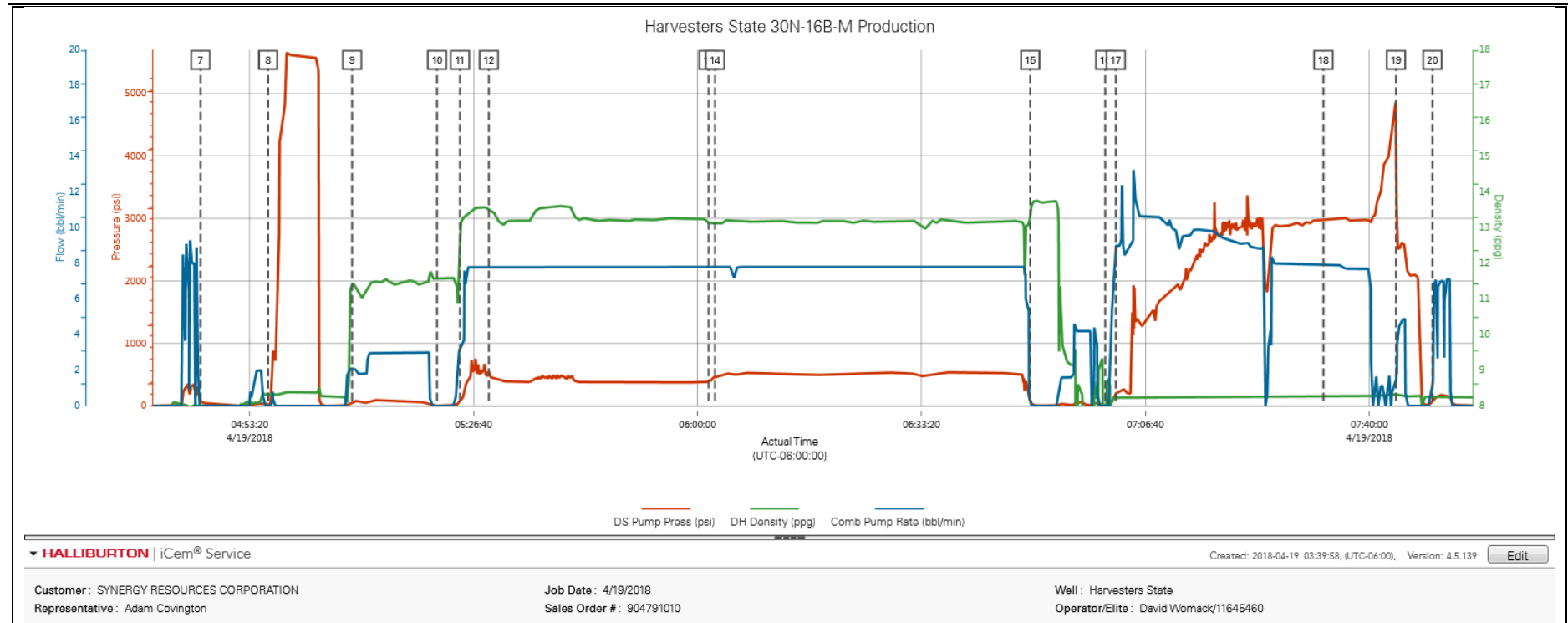
Type	Seq. No.	Activity	Graph Label	Date	Time	Source	DS Pump Press (psi)	DH Density (ppg)	Comb Pump Rate (bbl/min)	Comments
Event	1	Call Out	Call Out	4/18/2018	09:30:00	USER				CALLED OUT BY SERVICE COORDINATOR FOR O/L AT 0230
Event	2	Pre-Convoy Safety Meeting	Depart Shop for Location	4/19/2018	00:00:00	USER				HELD MEETING WITH ALL PERSONNEL IN CONVOY TO DISCUSS DIRECTIONS AND HAZARDS ASSOCIATED WITH DRIVING, ALL FIT TO DRIVE.
Event	3	Depart Shop for Location	Depart Shop for Location	4/19/2018	00:20:00	USER				JOURNEY MANAGEMENT PRIOR TO DEPARTURE
Event	4	Arrive At Loc	Arrive At Loc	4/19/2018	02:00:00	USER				UPON ARRIVAL MET WITH COMPANY MAN TO DISCUSS JOB DETAILS AND CALCULATIONS, PERFORMED HAZARD HUNT AND SITE ASSESSMENT.
Event	5	Safety Meeting - Pre Rig-Up	Safety Meeting - Pre Rig-Up	4/19/2018	02:15:00	USER				DISCUSSED RIGGING UP HAZARDS AND PROCEDURE ACCORDING TO HMS.
Event	6	Safety Meeting - Pre Job	Safety Meeting - Pre Job	4/19/2018	04:30:00	USER	-2.00	0.35	0.00	HELD SAFETY MEETING WITH ALL JOB ASSOCIATED PERSONNEL TO DISCUSS JOB PROCEDURE, HAZARDS AND STOP WORK AUTHORITY. Water test- PH-6, Chlor-0, Temp-65. Cement temp-70.
Event	7	Start Job	Start Job	4/19/2018	04:46:01	COM4	64.00	8.00	0.00	FILLED LINES WITH 3 BBLS OF FRESH WATER. 2 BPM 15 PSI.
Event	8	Test Lines	Test Lines	4/19/2018	04:56:05	COM4	22.00	8.32	0.00	PERFORMED A 5,000 PSI PRESSURE TEST AFTER PERFORMING A 500 PSI KICK OUT TEST AND A 5TH GEAR STALL. HELD FOR 3 MINUTES. NO LEAKS.
Event	9	Pump Spacer 1	Pump Spacer 1	4/19/2018	05:08:35	COM4	59.00	11.45	2.10	PUMPED 40 BBLS OF TUNED SPACER AT 11.5#, 3.8y, 23.8wr. ADDED 20 GALLONS OF DUEL SPACER B, MUSOL A AND 10 GALLONS OF D-AIR. 2 BPM 50 PSI.
Event	10	Drop Bottom Plug	Drop Bottom Plug	4/19/2018	05:21:14	COM4	2.00	11.59	0.00	ADAM COVINGTON DROPPED NON HALLIBURTON 5.5" BOTTOM PLUG. CO. MAN WITNESSED.
Event	11	Pump Lead Cement	Pump Lead Cement	4/19/2018	05:24:38	COM4	94.00	12.44	3.40	PUMPED 291 BBLS (1042 SKS) OF 13.2#, 1.57y, 7.54wr.

ELASTICEM CEMENT AT 8 BPM, 350 PSI.

Event	12	Check Weight	Check Weight	4/19/2018	05:28:56	COM4	464.00	13.48	7.80	WEIGHED UP CEMENT WITH PRESSURIZED MUD SCALES. CEMENT WEIGHED UP AT 13.2#
Event	13	Pump Tail Cement	Pump Tail Cement	4/19/2018	06:01:39	COM4	385.00	13.15	7.80	PUMPED 357 BBLS (983 SKS) OF 13.2#, 2.04y, 9,77wr, NEOCEM CEMENT AT 8 BPM, 530 PSI.
Event	14	Check Weight	Check Weight	4/19/2018	06:02:36	COM4	428.00	13.11	7.80	WEIGHED UP CEMENT WITH PRESSURIZED MUD SCALES. CEMENT WEIGHED UP AT 13.2#
Event	15	Shutdown	Shutdown	4/19/2018	06:49:32	COM4	66.00	13.43	0.00	SHUTDOWN TO WASH PUMPS AND LINES
Event	16	Pump Displacement	Pump Displacement	4/19/2018	07:00:41	COM4	2.00	4.11	0.00	PUMPED 330 BBLS OF WATER DISPLACEMENT. FIRST 20 AND LAST 70 BBLS WITH MMCR. THE REST WITH BE-3 AND CLA WEB. GOT 10 BBLS OF CEMENT BACK TO SURFACE. 10 BPM, 1500 PSI.
Event	17	Drop Top Plug	Drop Top Plug	4/19/2018	07:02:16	COM4	200.00	8.23	9.00	DROPPED NON HALLIBURTON 5.5" TOP PLUG. CO MAN WITNESSED, ADAM COVINGTON DROPPED.
Event	18	Bump Plug	Bump Plug	4/19/2018	07:33:10	COM4	2962.00	8.29	7.90	BUMPED PLUG AT 5 BPM 3000 PSI, TOOK TO 3450 PSI. CO. MAN WAS ON TRUCK.
Event	19	Other	Other	4/19/2018	07:43:58	USER	3679.00	8.34	1.40	PRESSURED UP ON SUB TO SHIFT TOOL. WENT AT 4850 PSI. TOOK 1.5 BBL TO SHIFT. THEN DROPPED 2450 PSI. PUMPED 6 BBL WET SHOE AT 3 BPM.
Event	20	End Job	End Job	4/19/2018	07:49:24	COM4	57.00	8.26	0.90	ESTIMATED TOP OF TAIL AT 6,259.65FT 10 BBLS OF CEMENT TO SURFACE.
Event	21	Pre-Rig Down Safety Meeting	Pre-Rig Down Safety Meeting	4/19/2018	08:00:00	USER	5.00	8.24	0.00	DISCUSSED RIGGING DOWN HAZARDS AND PROCEDURE ACCORDING TO HMS.
Event	22	Pre-Convoy Safety Meeting	Pre-Convoy Safety Meeting	4/19/2018	09:00:00	USER				HELD MEETING WITH ALL HES EMPLOYEES IN CONVOY TO DISCUSS DIRECTIONS AND HAZARDS ASSOCIATED WITH DRIVING, ALL FIT TO DRIVE.
Event	23	Depart Location	Depart Location	4/19/2018	09:45:00	USER				PRE JOURNEY MANAGEMENT PRIOR TO DEPARTURE.

3.0 Attachments

.. Harvesters State 30N-16B-M – Job Chart with Events



Harvesters State 30N-16B-M – Job Chart without Events

