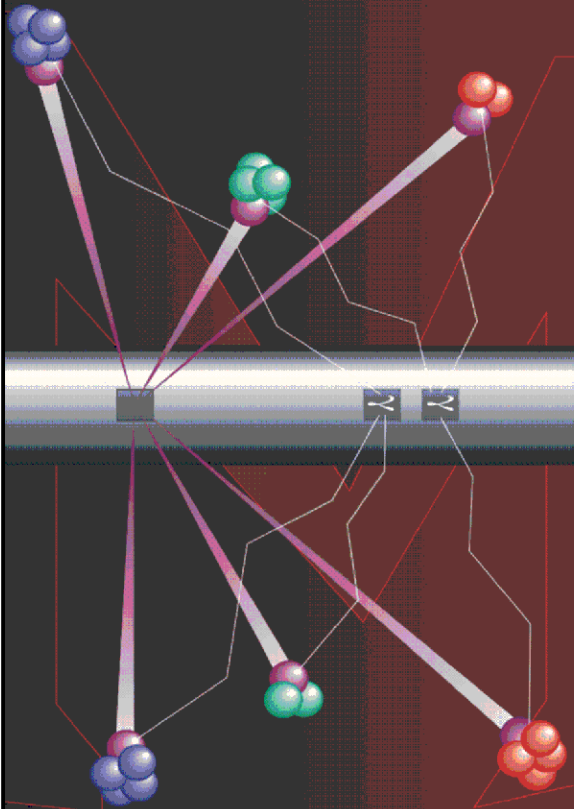


Pulsed Neutron Formation Evaluation



RESERVOIR PERFORMANCE MONITOR NEO Neutron Emulated Openhole

COMPANY LARAMIE ENERGY LLC

WELL NICHOLS 0994-24-12E

FIELD VEGA

COUNTY MESA STATE COLORADO

LOCATION:

SEE REMARKS

SEC 24 TWP 9S RGE 94W

ELEVATIONS:

KB 7236 FT DF GL 7212 FT

DATE 5-JUL-2018 ECC 137595

IN MAKING INTERPRETATIONS OF LOGS OUR EMPLOYEES WILL GIVE THE CUSTOMER THE BENEFIT OF THEIR BEST JUDGEMENT. BUT SINCE ALL INTERPRETATIONS ARE OPINIONS BASED ON INFERENCES FROM ELECTRICAL OR OTHER MEASUREMENTS, WE CANNOT, AND WE DO NOT GUARANTEE THE ACCURACY OR CORRECTNESS OF ANY INTERPRETATION. WE SHALL NOT BE LIABLE OR RESPONSIBLE FOR ANY LOSS, COST, DAMAGES, OR EXPENSES WHATSOEVER INCURRED OR SUSTAINED BY THE CUSTOMER RESULTING FROM ANY INTERPRETATION MADE BY ANY OF OUR EMPLOYEES.

COMPUTATION PARAMETERS

COMPUTATION	LOGS USED: <u>RPM-C</u>		PROGRAM: <u>NEO</u>
	CENTER: <u>HOUSTON</u>	LOG ANALYST: <u>KIMBERLY ELLSWORTH</u>	DATE: <u>5-JUL-2018</u>
FIELD DATA	LOCATION: <u>GRAND JUNCTION</u>	ENGINEER: <u>T. NEWELL</u>	DATE: <u>26-JUN-2018</u>

FROM	TO								
<u>2152 FT</u>	<u>7482 FT</u>								

REMARKS

LOCATION: SHL: 2272' FNL & 2795' FWL
BHL: 2465' FSL & 1442' FEL

TRAINING WELL:
NICHOLS 24-06W

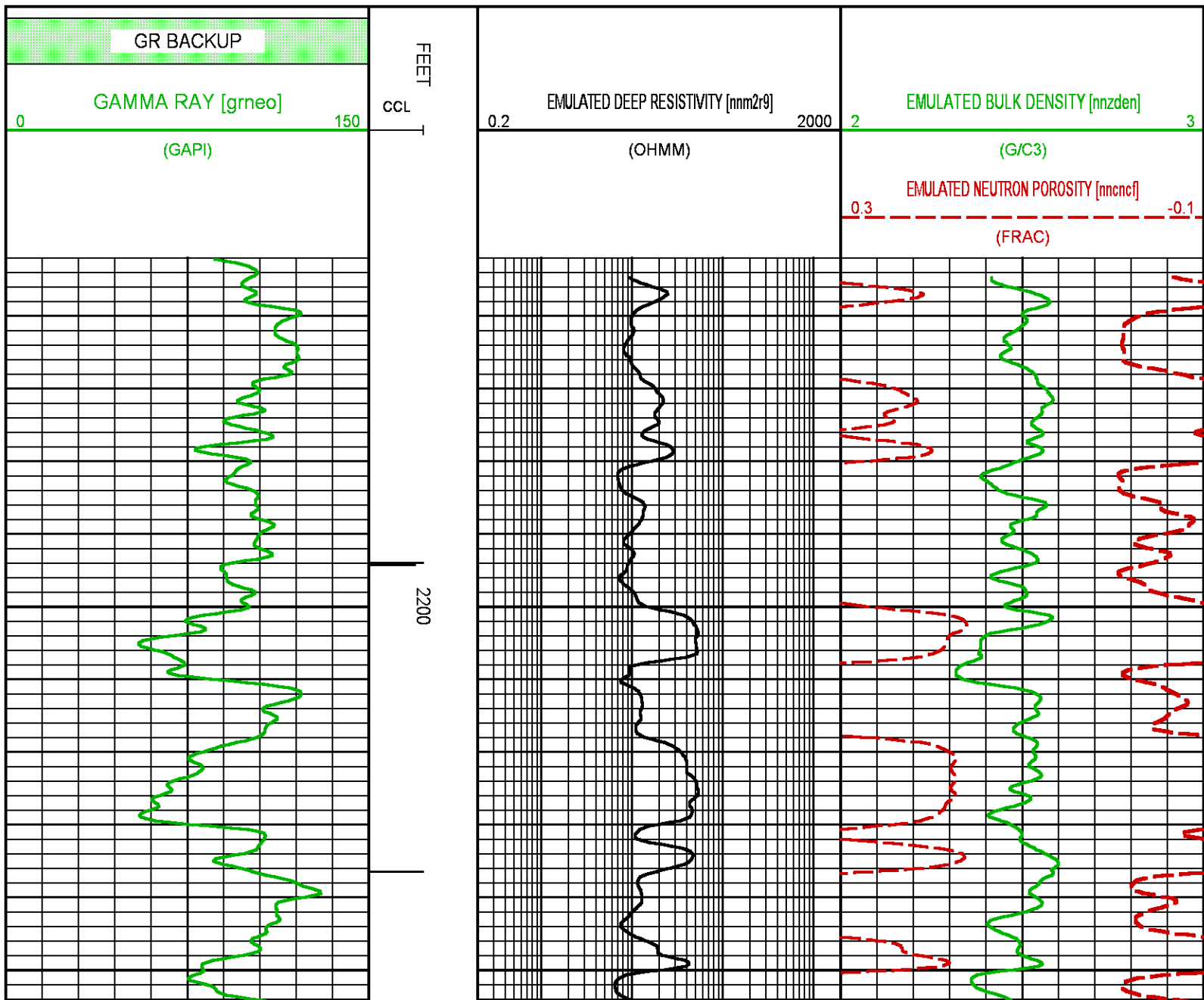
ANY ERRORS IN THE TRAINING WELL OPENHOLE DATA CAN PERETUATE THROUGH AS ERROR IN THE EMULATED RESULTS

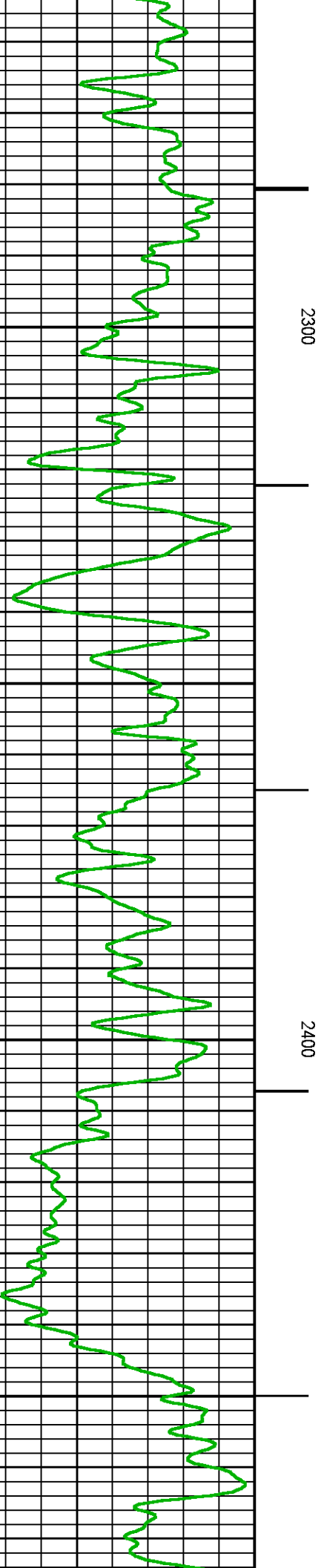
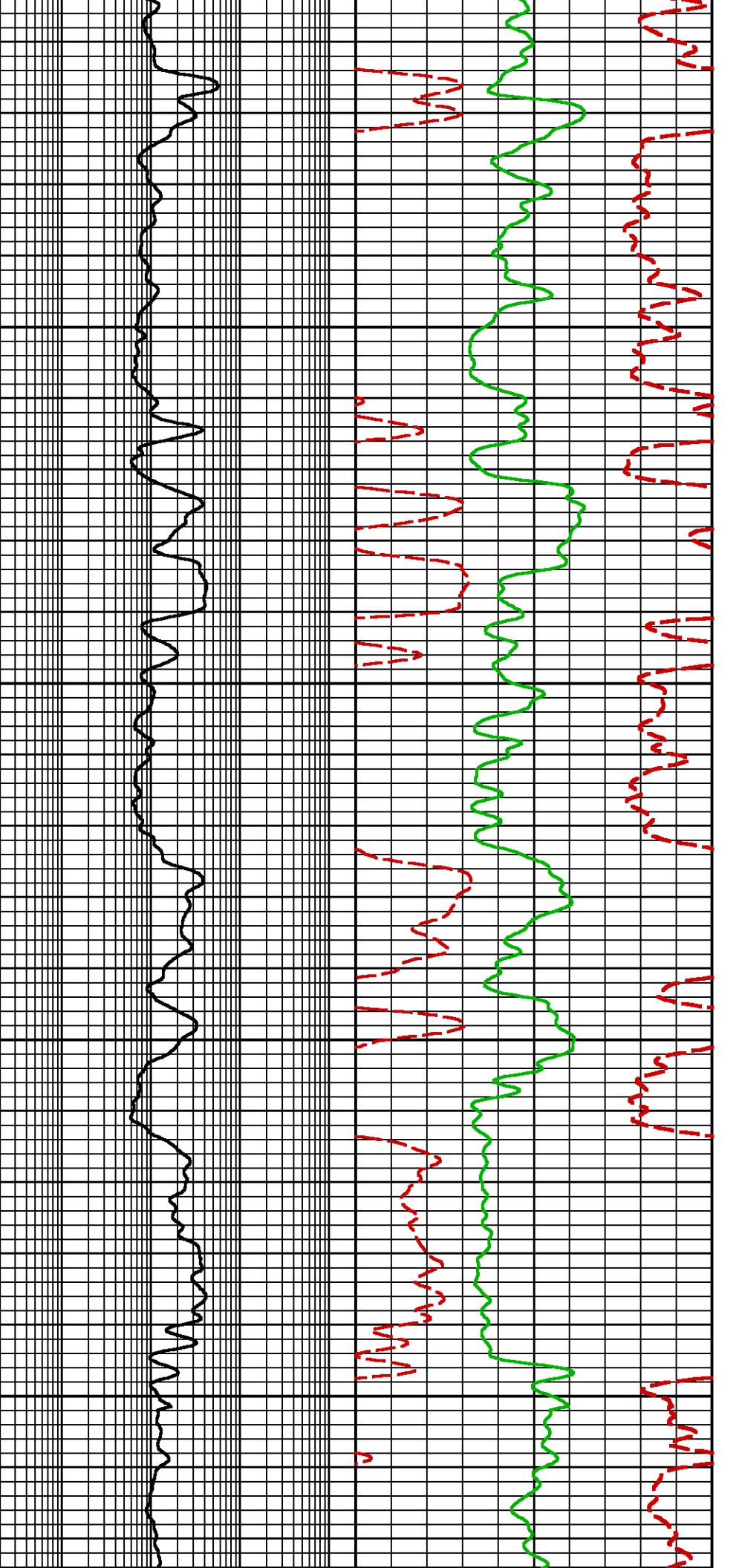
BOND LOG IS DEPTH REFERENCE LOG

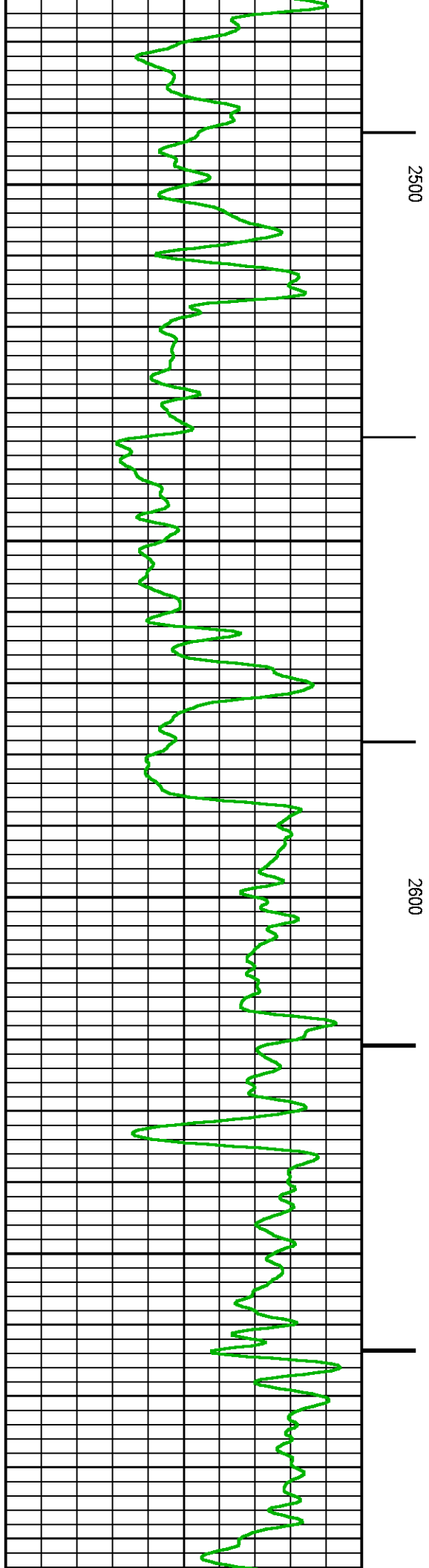
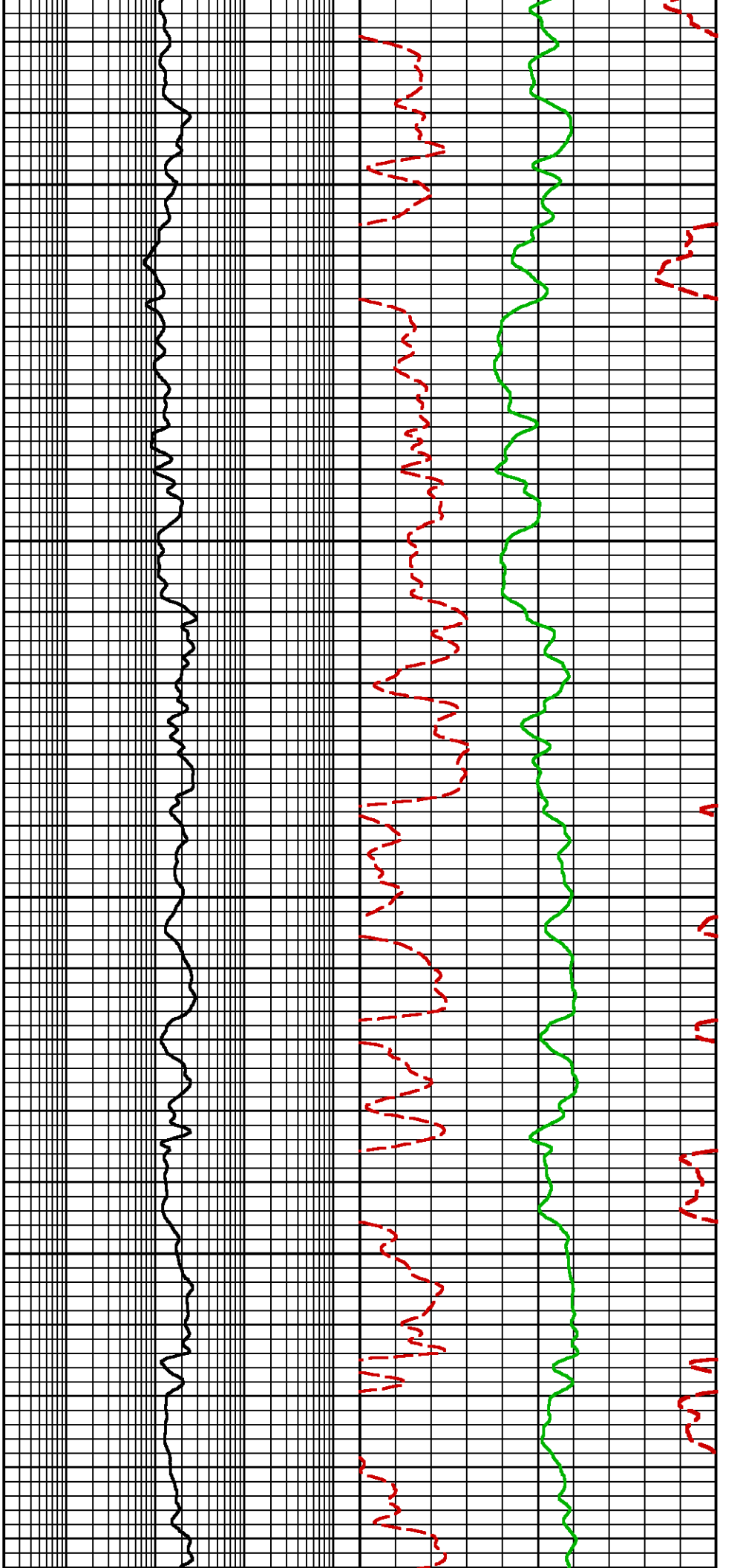
NEO RESULTS FOR NICHOLS 0994-24-12E (G-SAND)

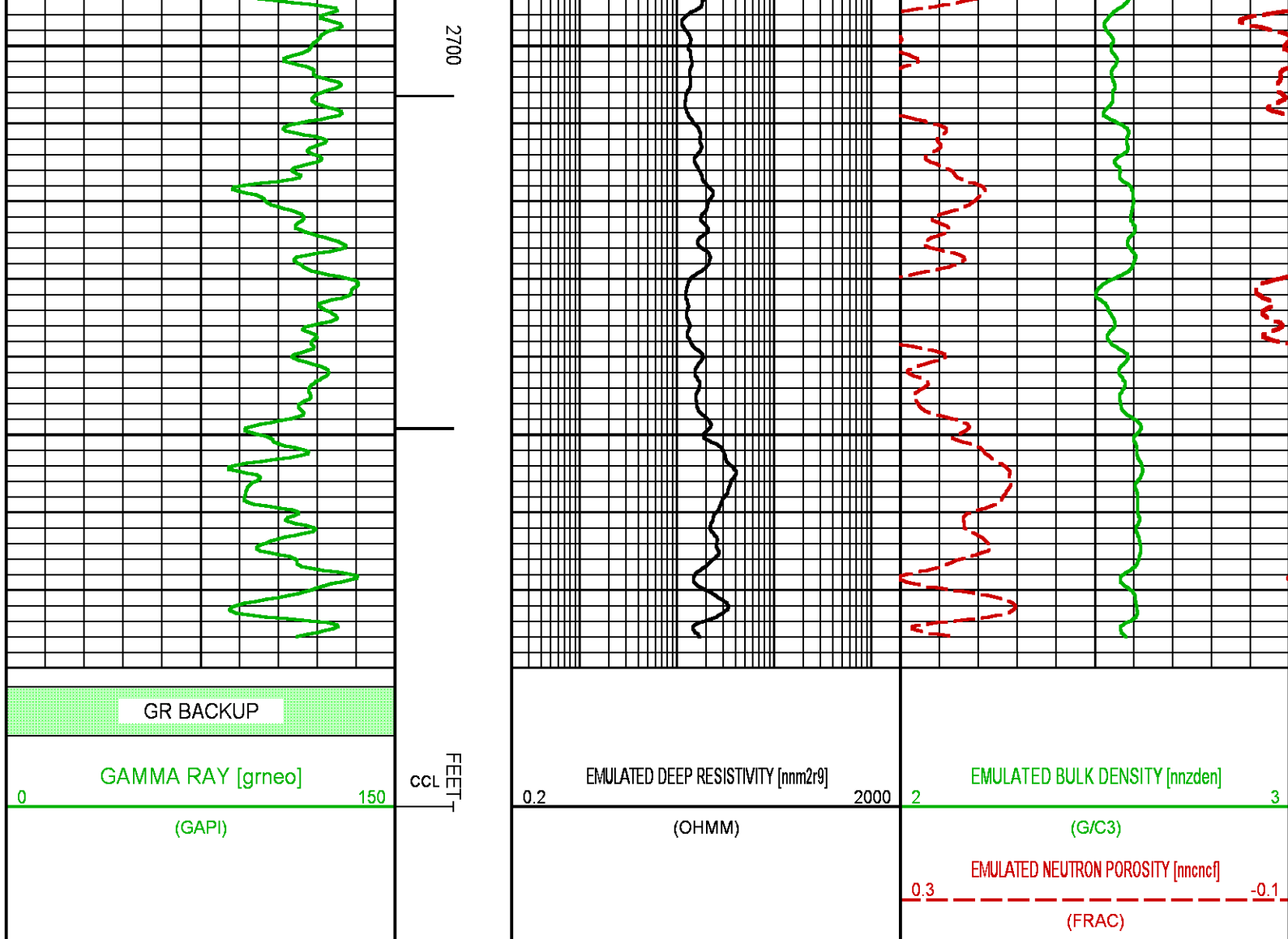
Project : NA
User : ellskima
Presentation : BHI3BKZH12:C:\Ape Projects\laramie_nichols_24_12e\NEO_PRESENTATION_LARAMIE_G-Sand.pdf [5"/100' Scale]
Plot Interval : 2152.25 - 2780 Feet

Data File 1 : F1 : BHI3BKZH12:C:\Ape Projects\laramie_nichols_24_12e\Merged_Set_Final.xtf
Created On : N/A
Company : LARAMIE ENERGY LLC
Well : NICHOLS 0994-24-12E
Field : VEGA
File Interval : 2152.25 - 7481.25 Feet
OCT : NA



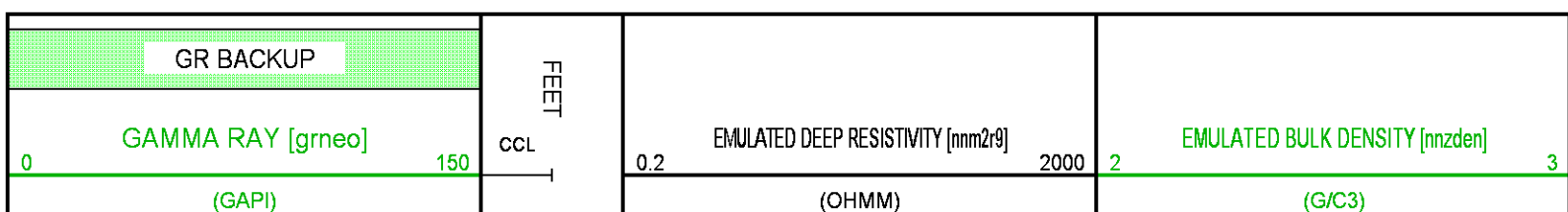






NEO RESULTS FOR NICHOLS 0994-24-12E (MAIN)

Project : NA
User : ellskima
Presentation : BHI3BKZH12:C:\Ape_Projects\laramie_nichols_24_12e\ NEO PRESENTATION_LARAMIE_MAIN.pdf [5"/100' Scale]
Plot Interval : 4055 - 7481.25 Feet
Data File 1 : F1 : BHI3BKZH12:C:\Ape_Projects\laramie_nichols_24_12e\Merged_Set_Final.xtf
Created On : N/A
Company : LARAMIE ENERGY LLC
Well : NICHOLS 0994-24-12E
Field : VEGA
File Interval : 2152.25 - 7481.25 Feet
OCT : NA

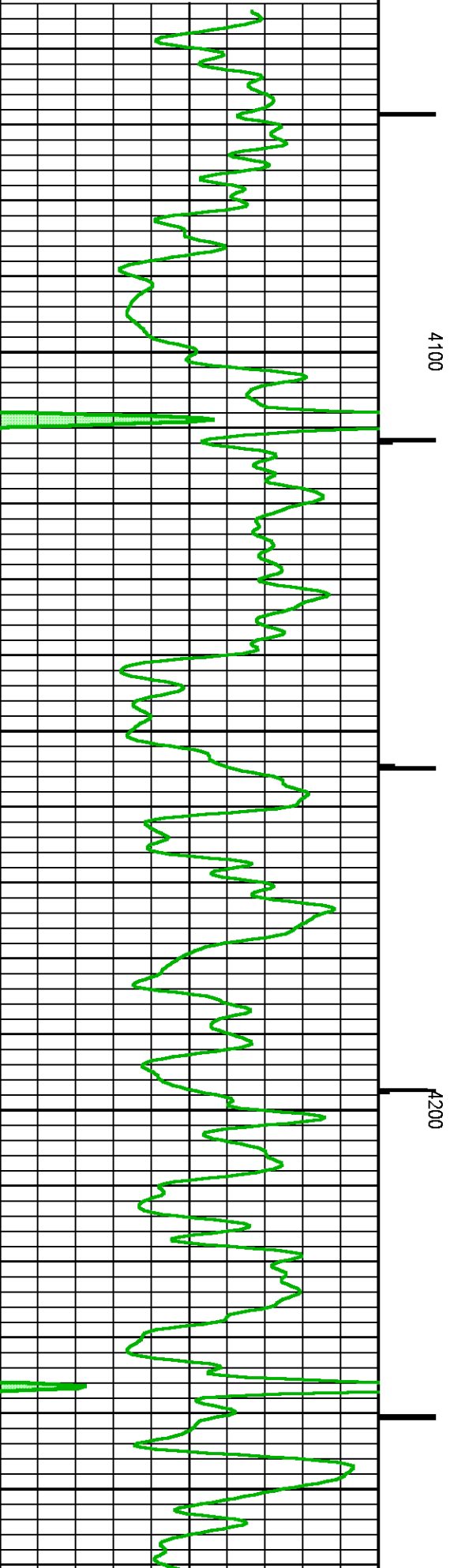
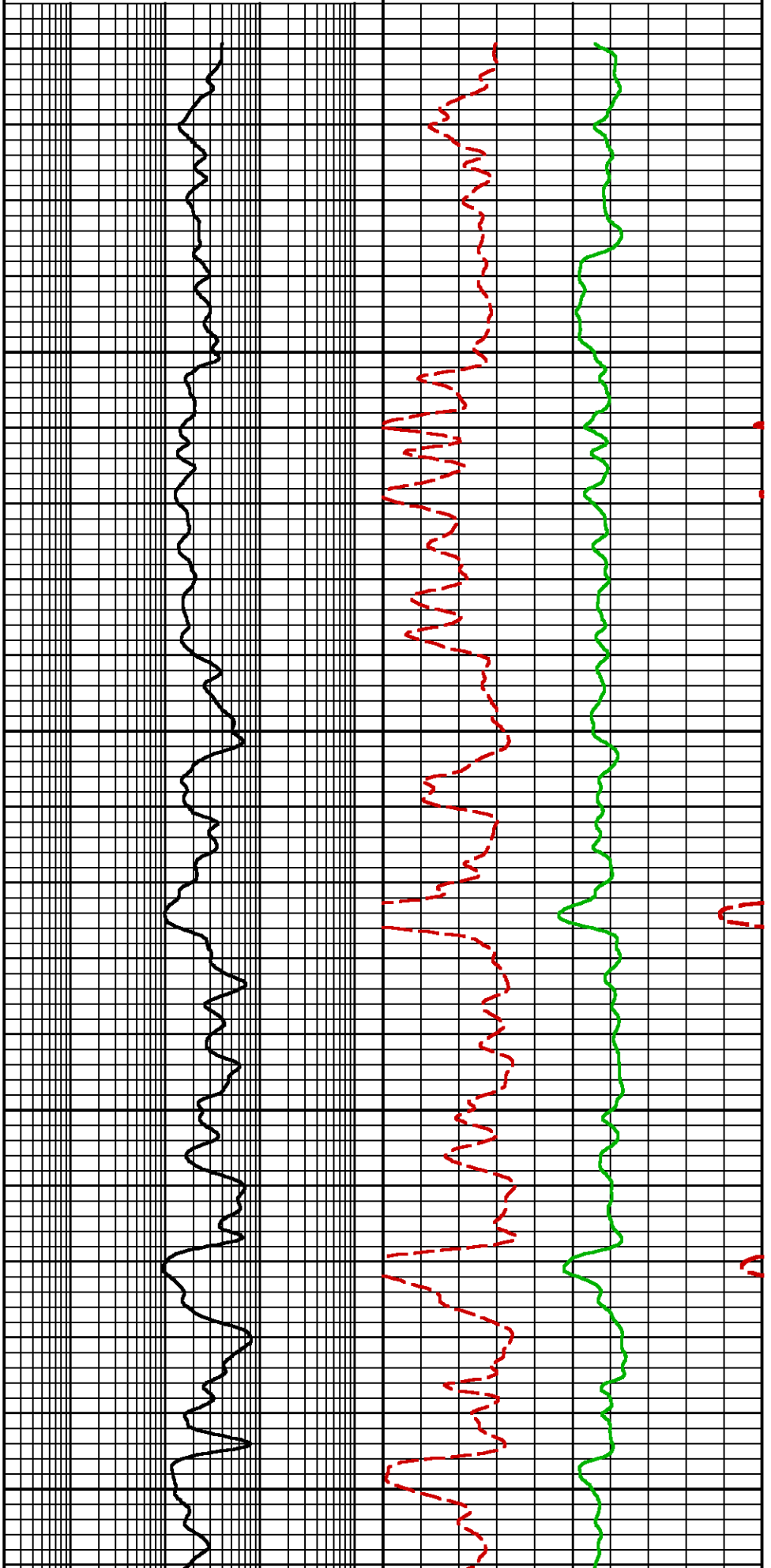


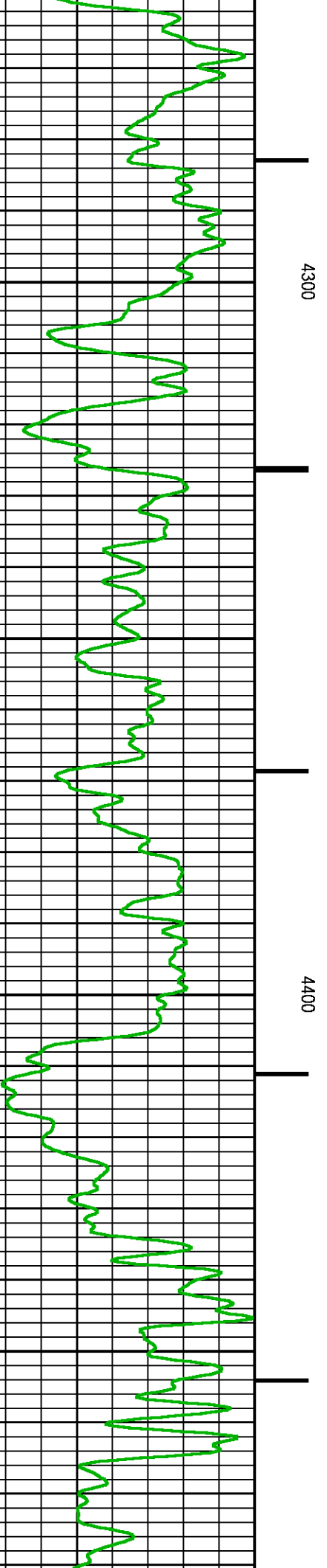
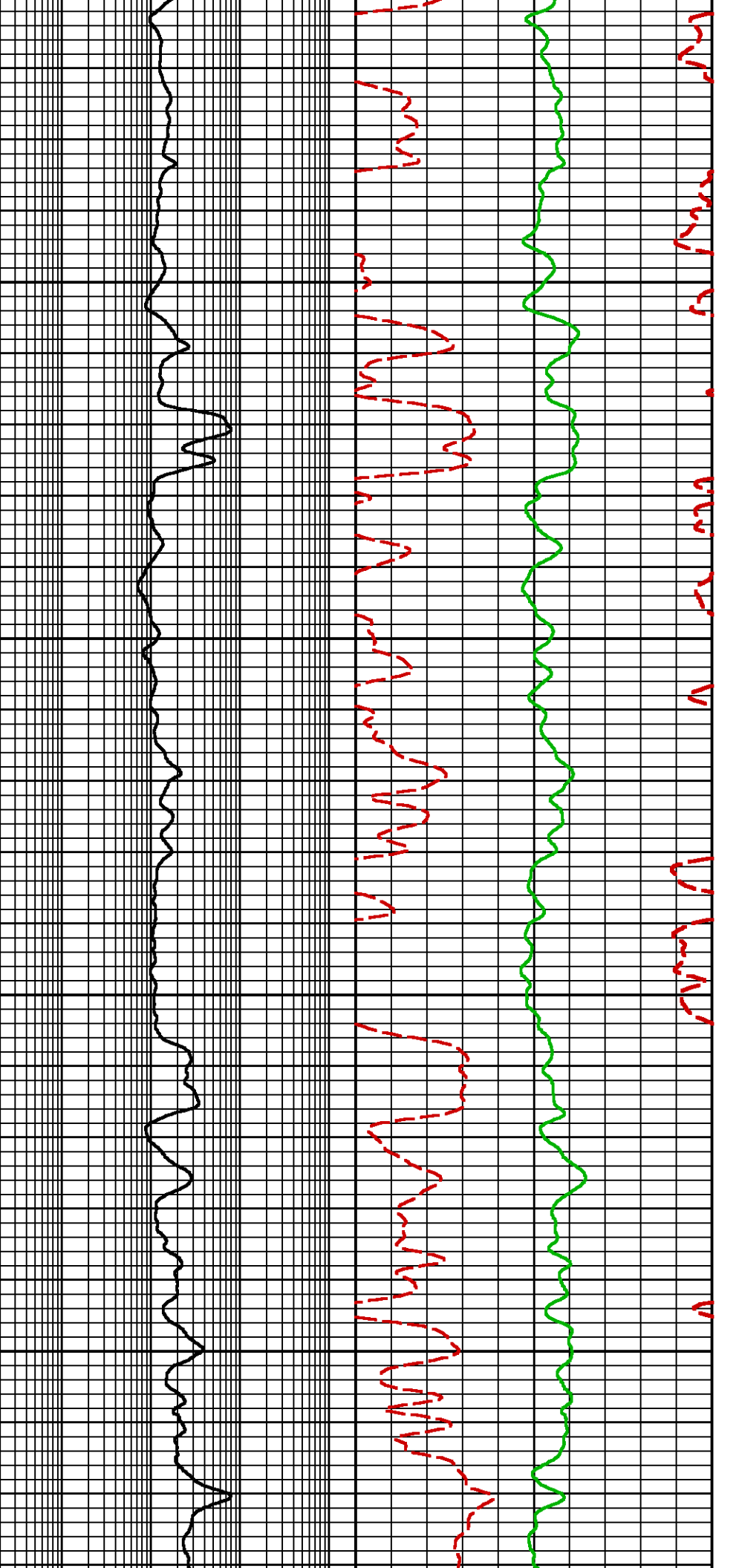
EMULATED NEUTRON POROSITY [nmcnc]

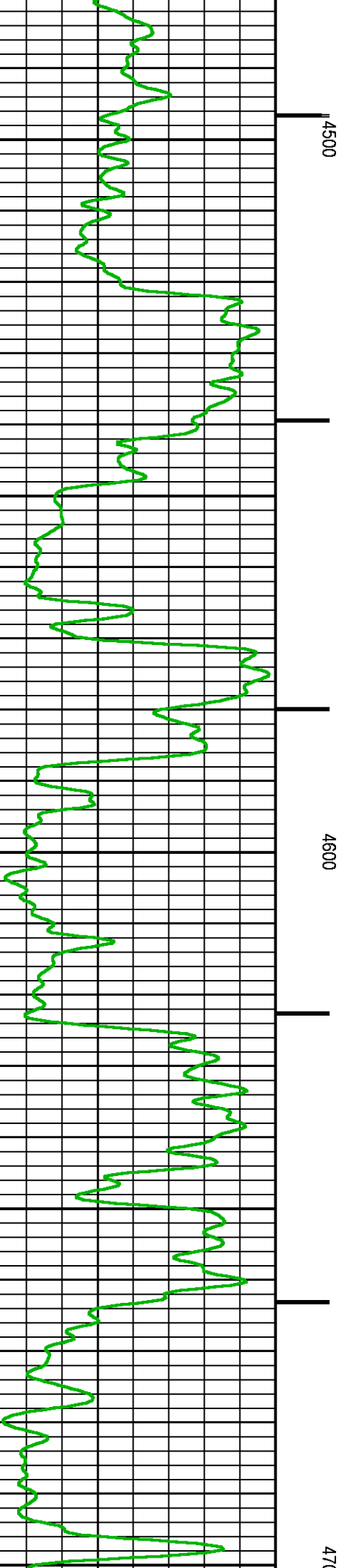
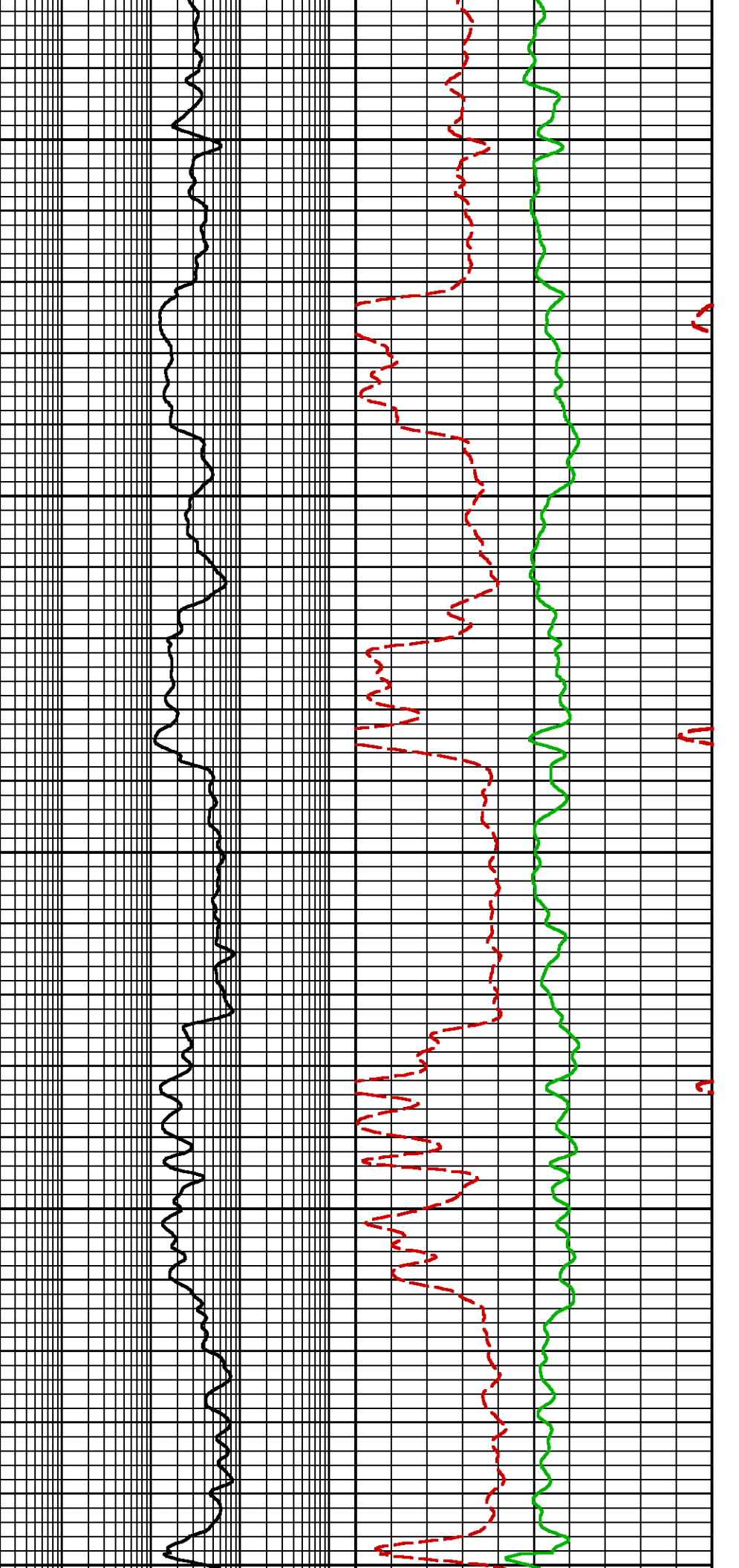
0.3

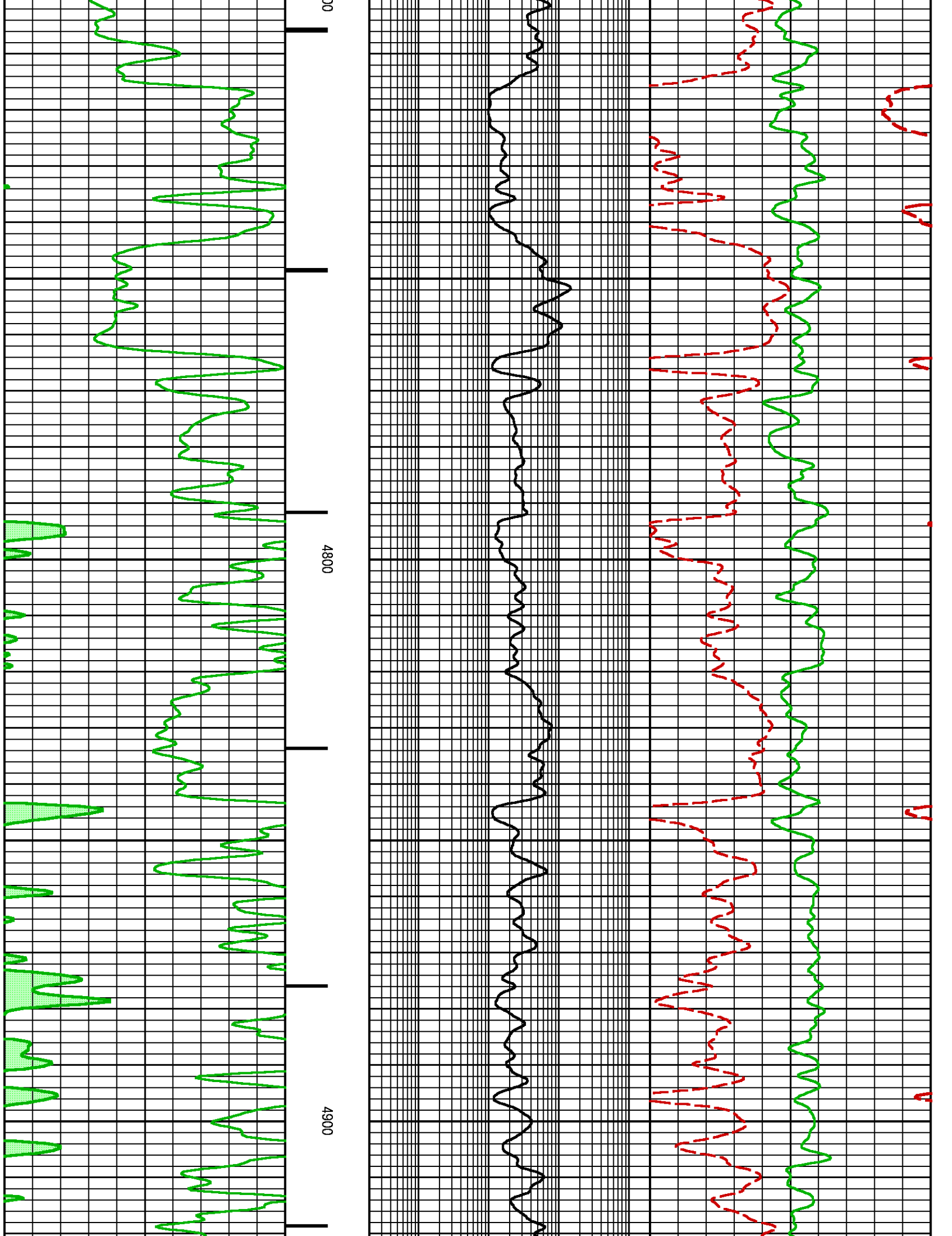
-0.1

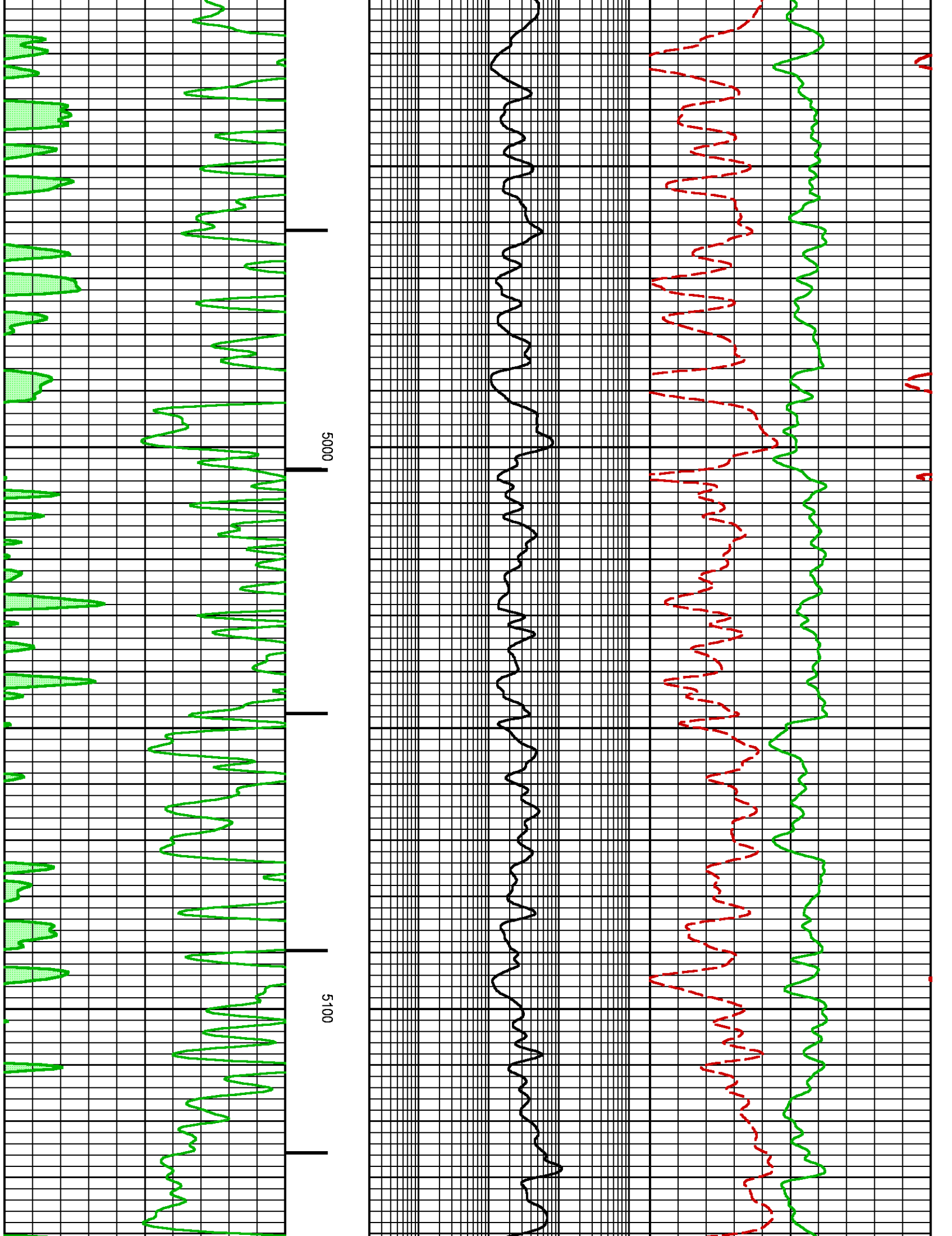
(FRAC)

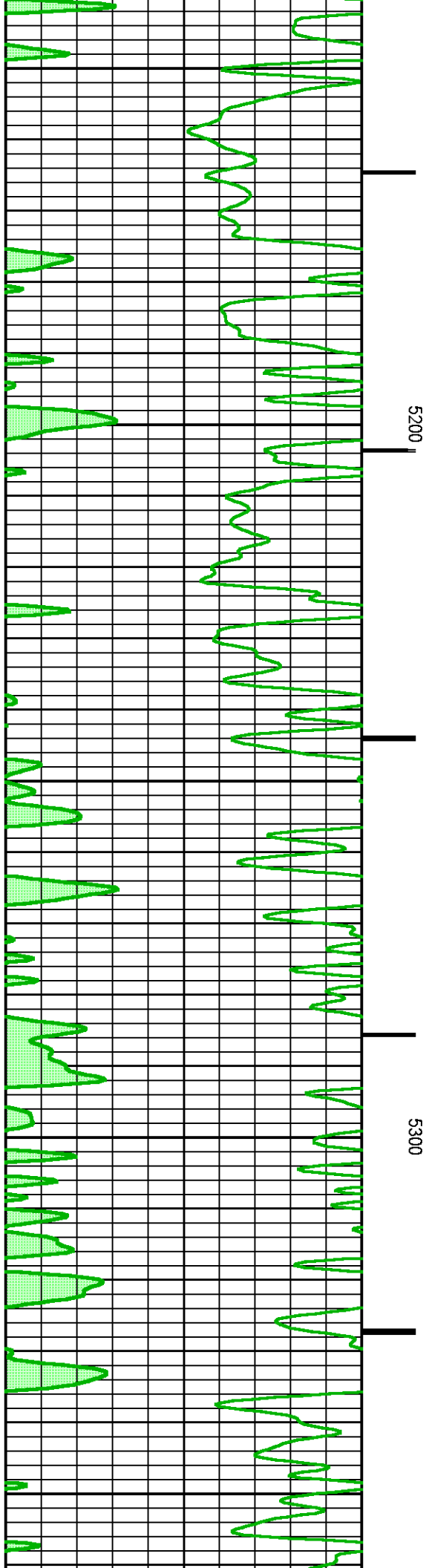
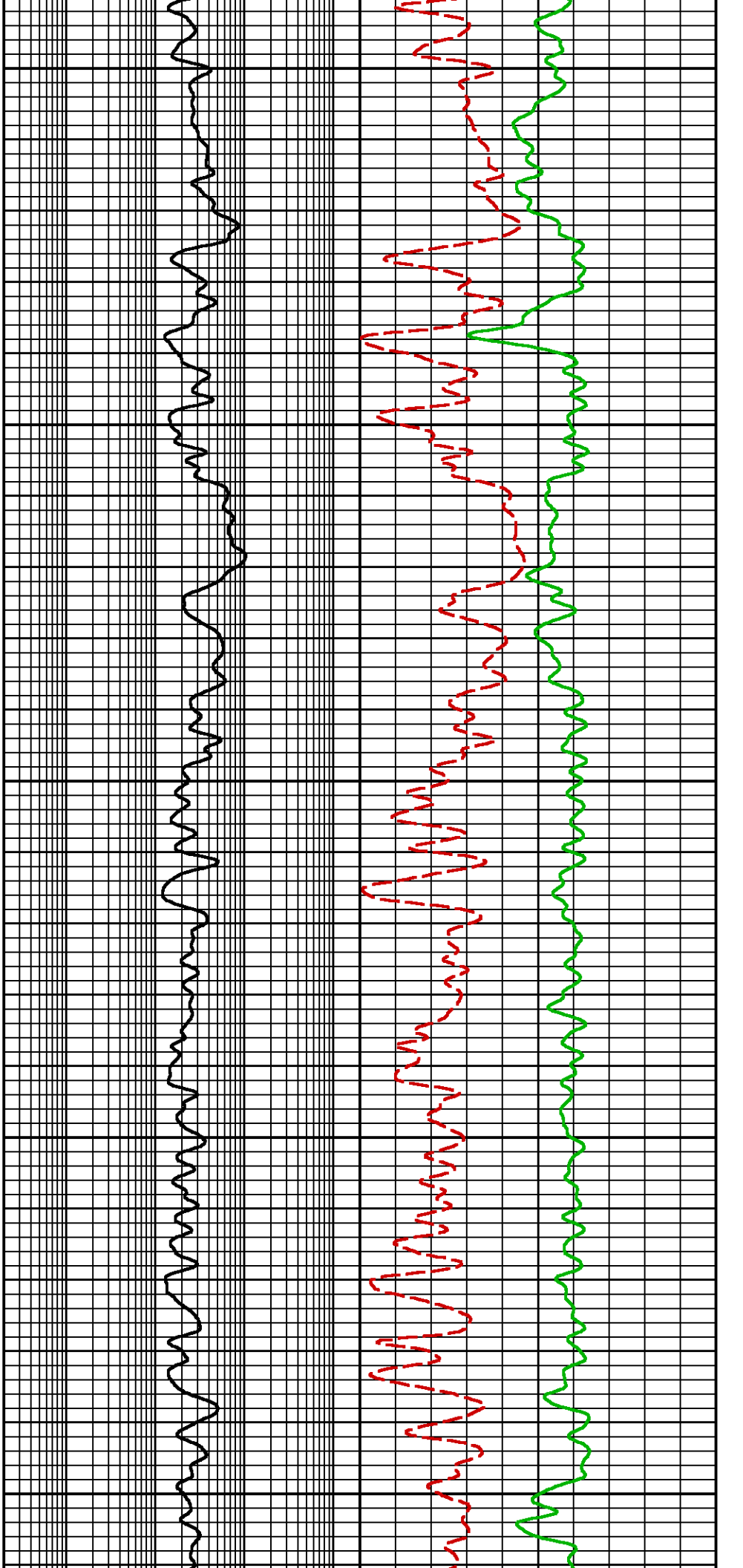


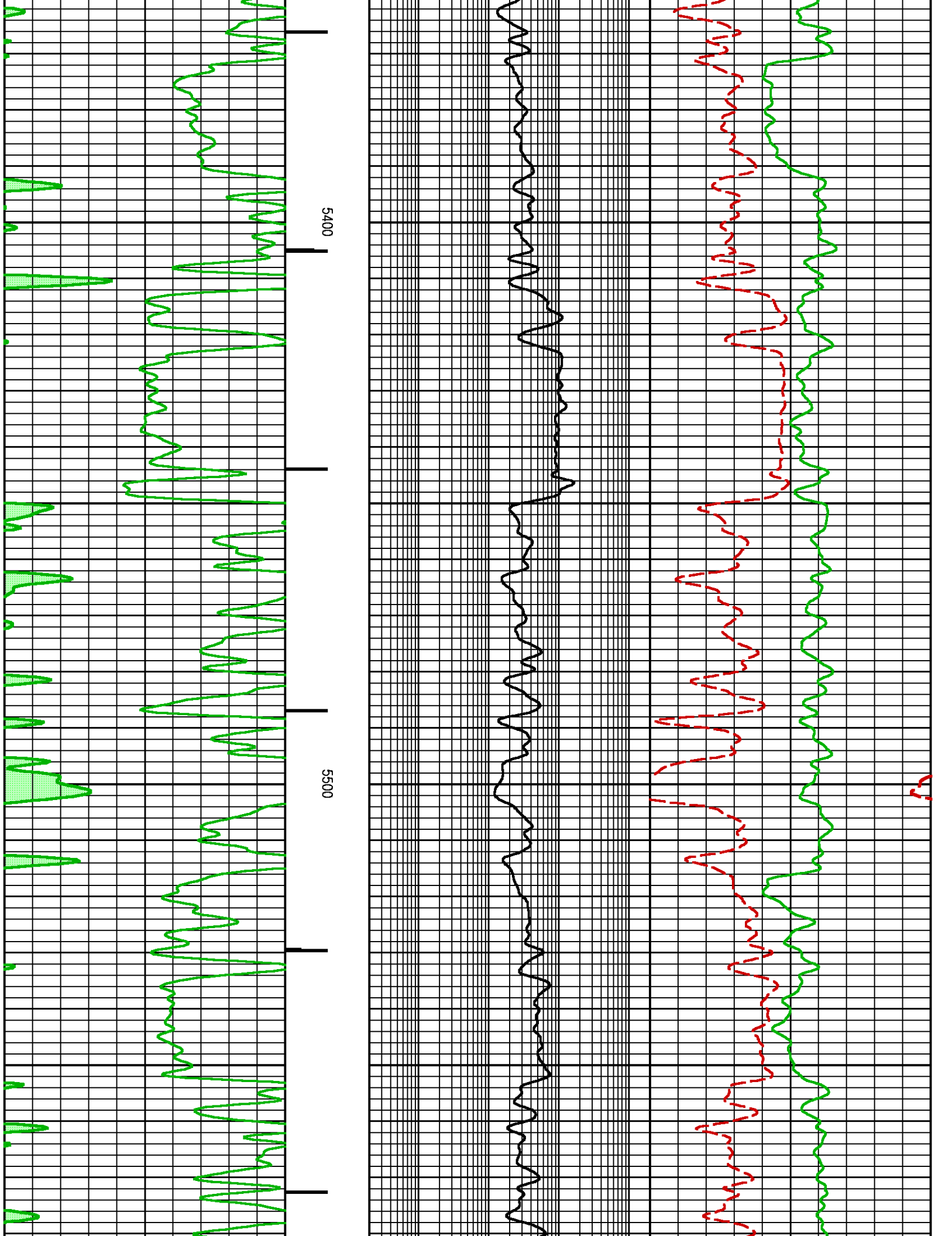


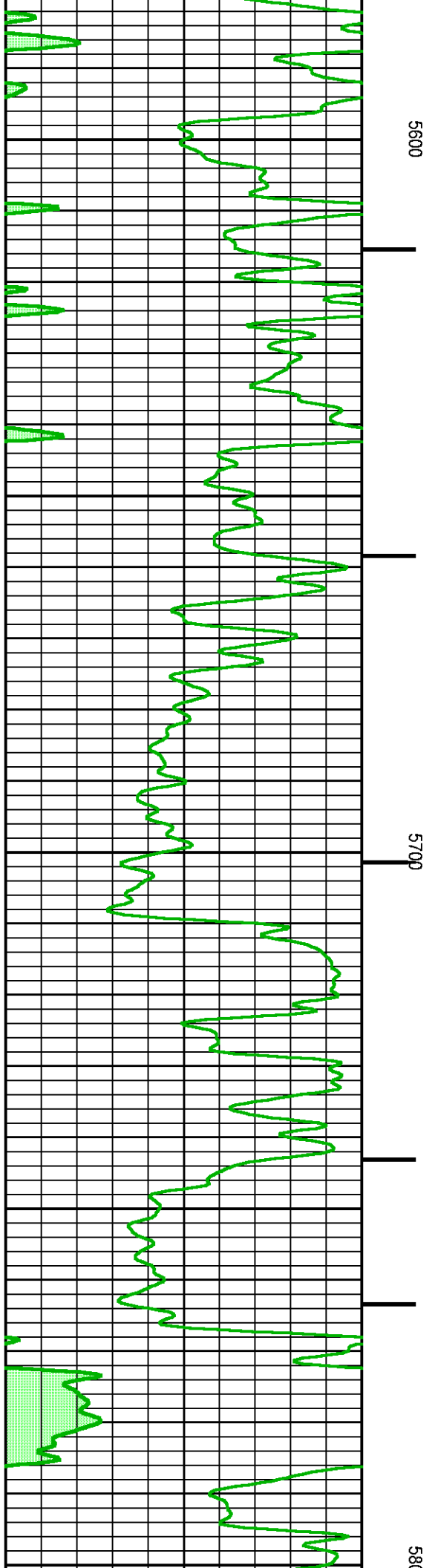
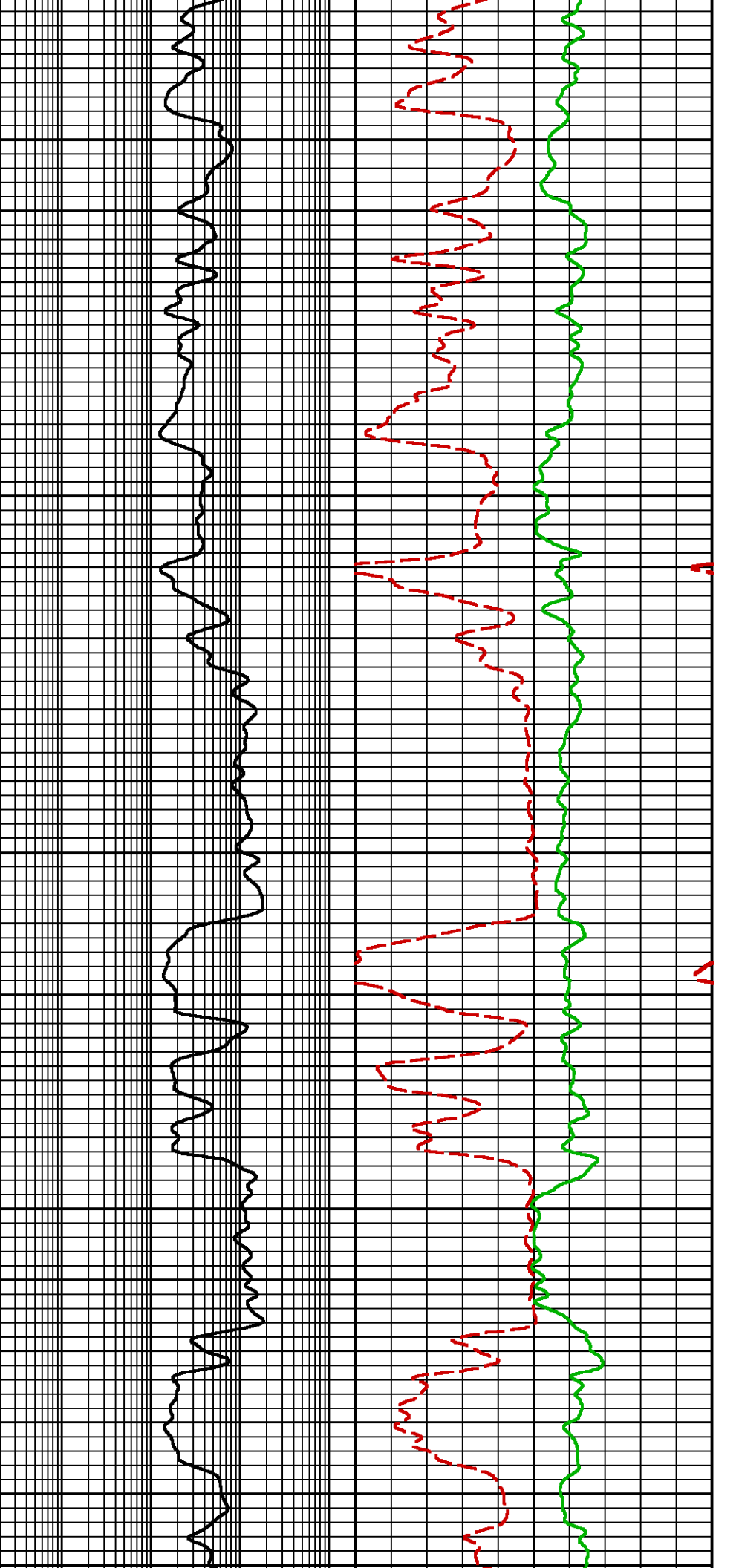


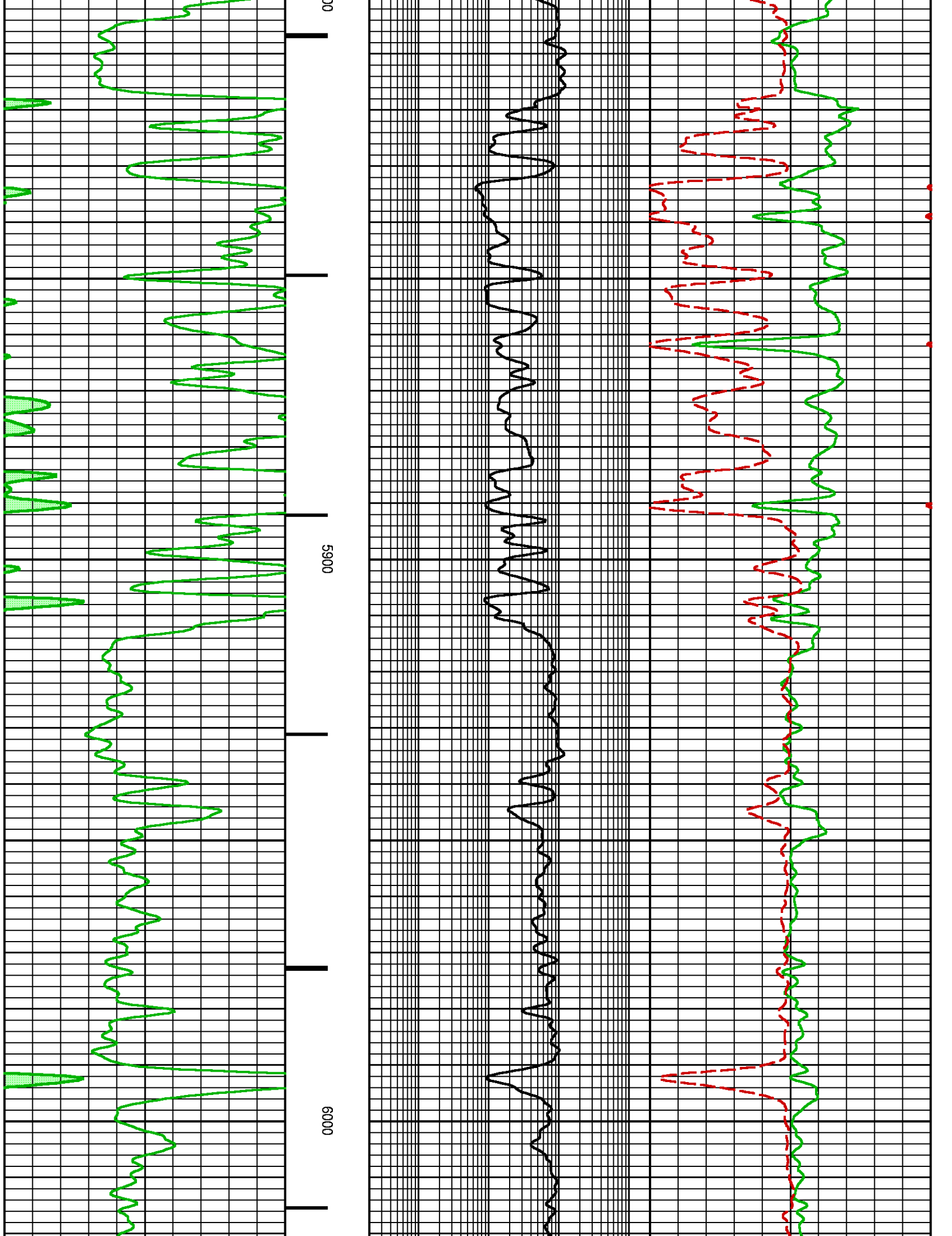


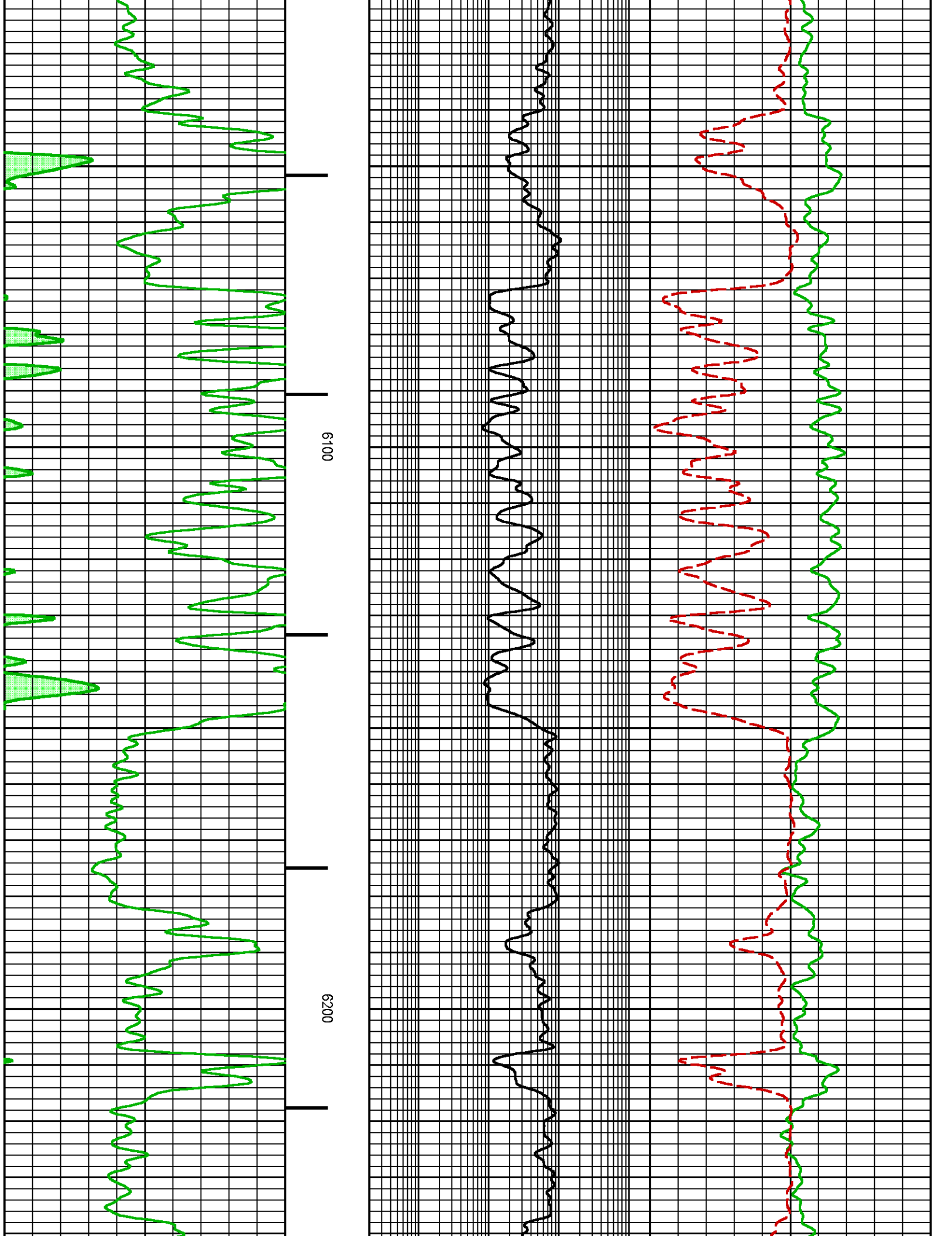


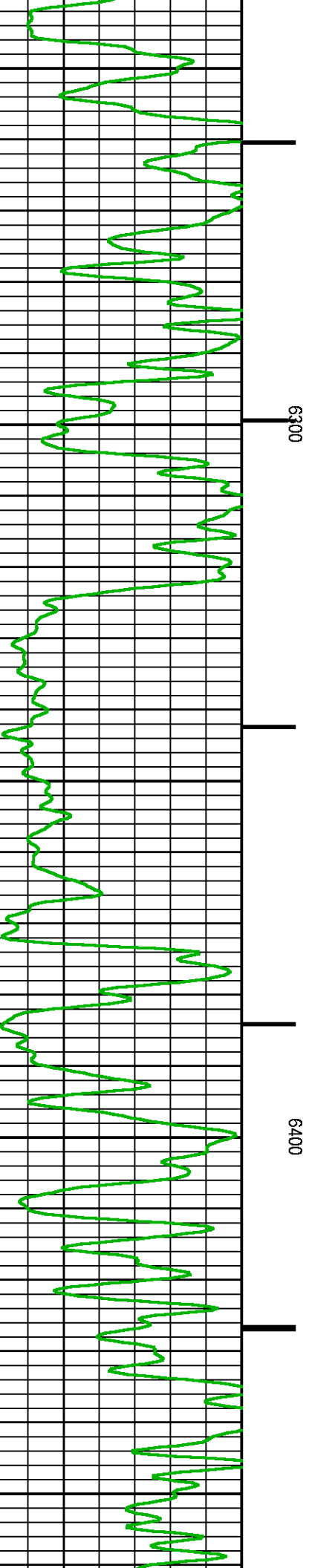
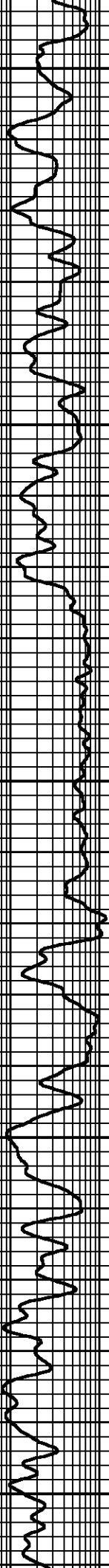
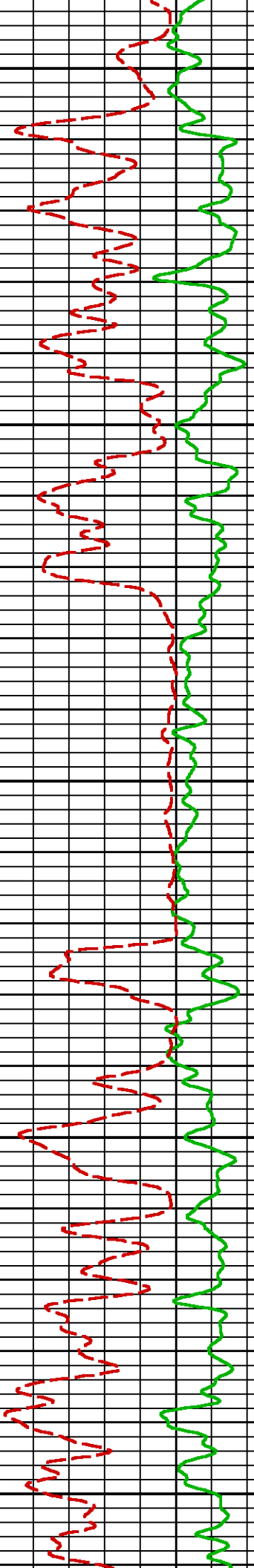


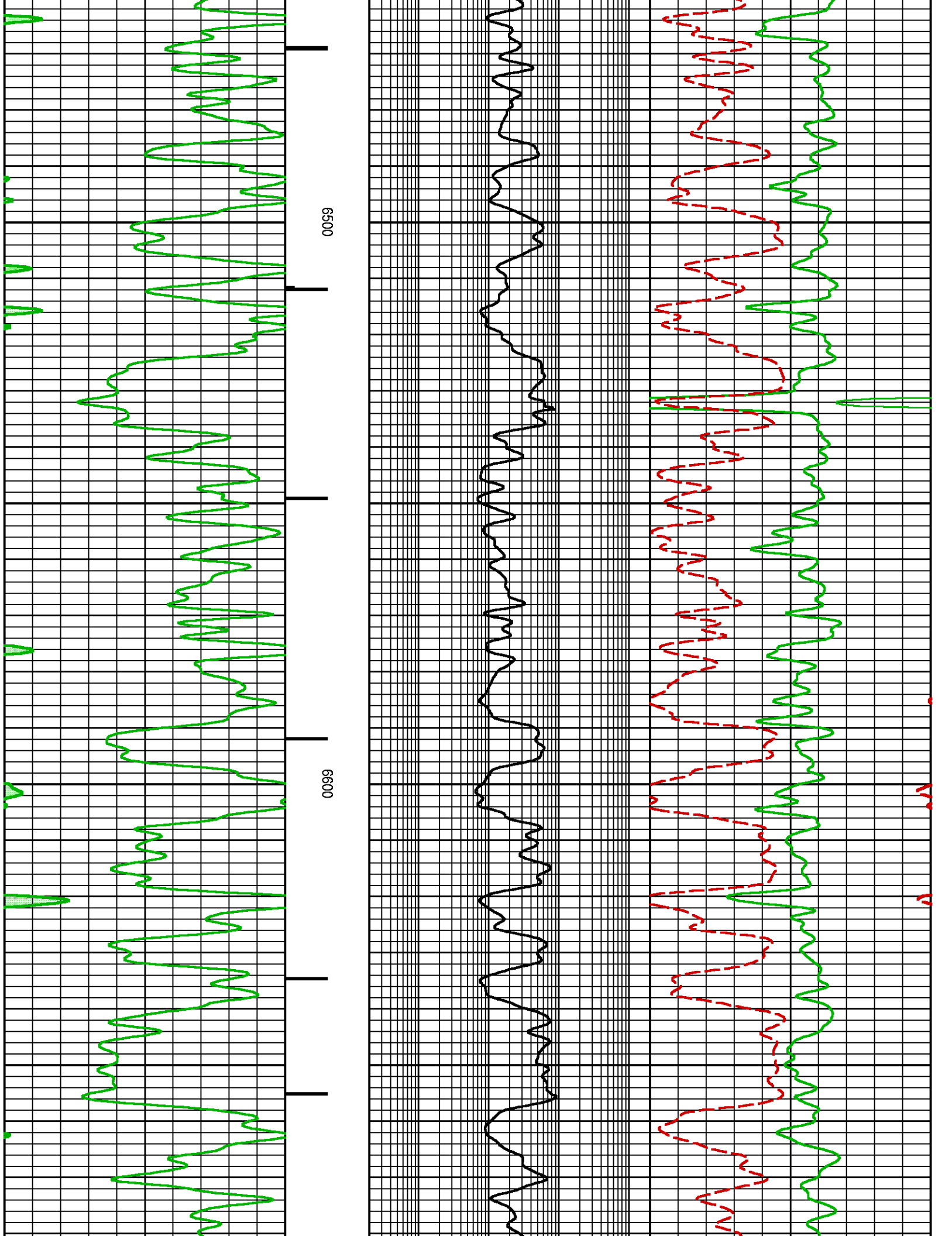


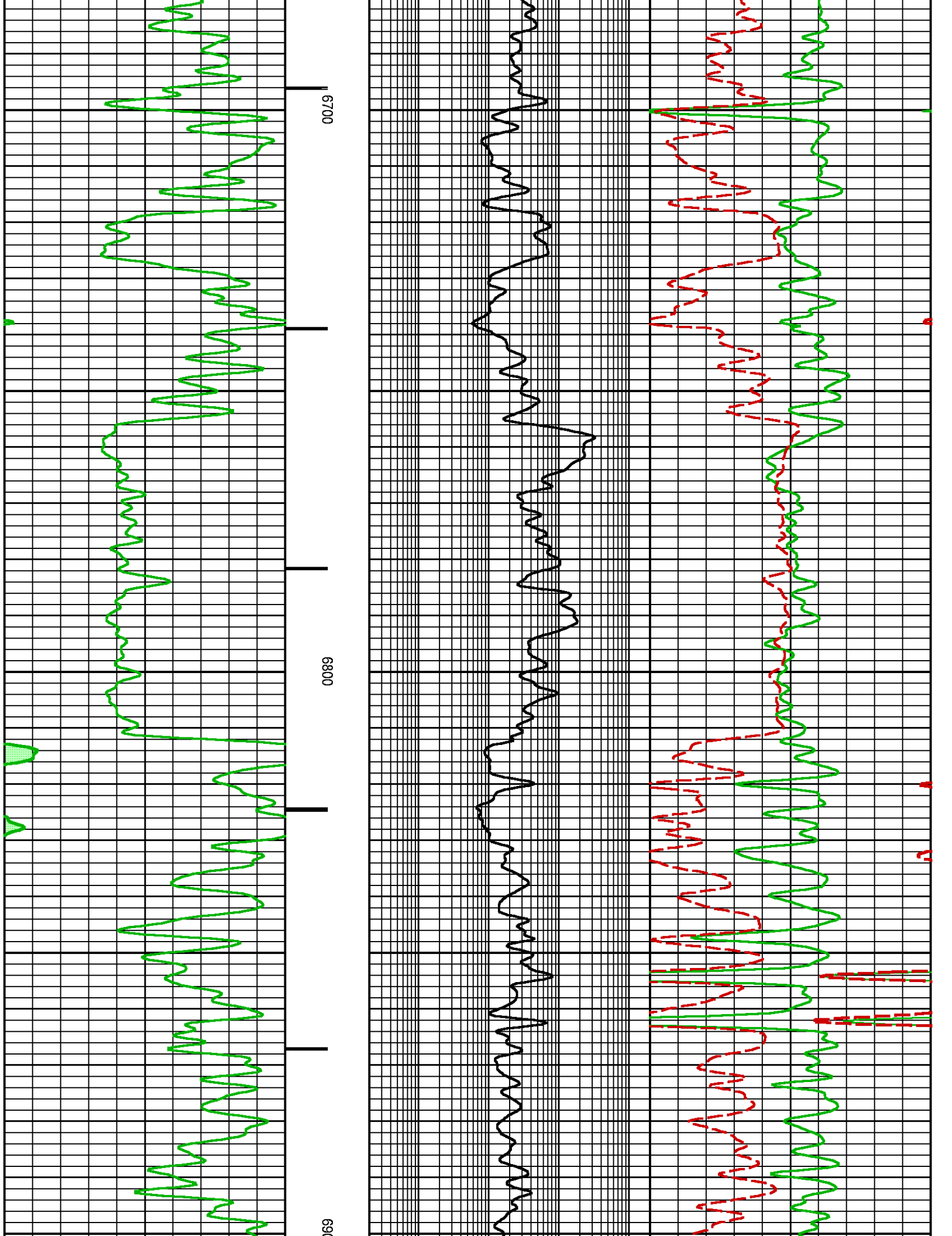


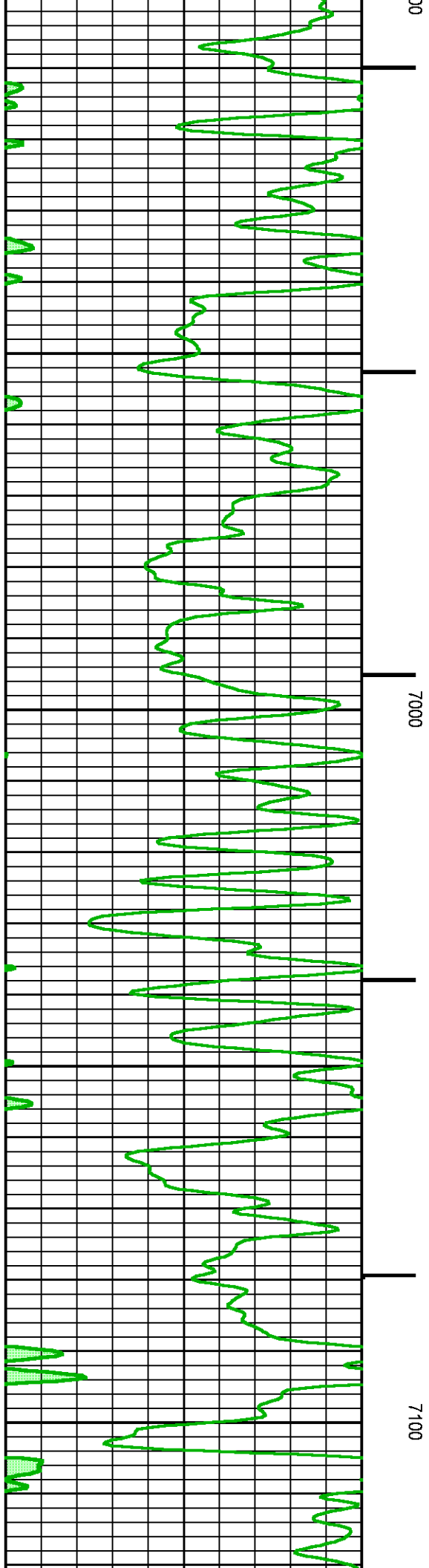
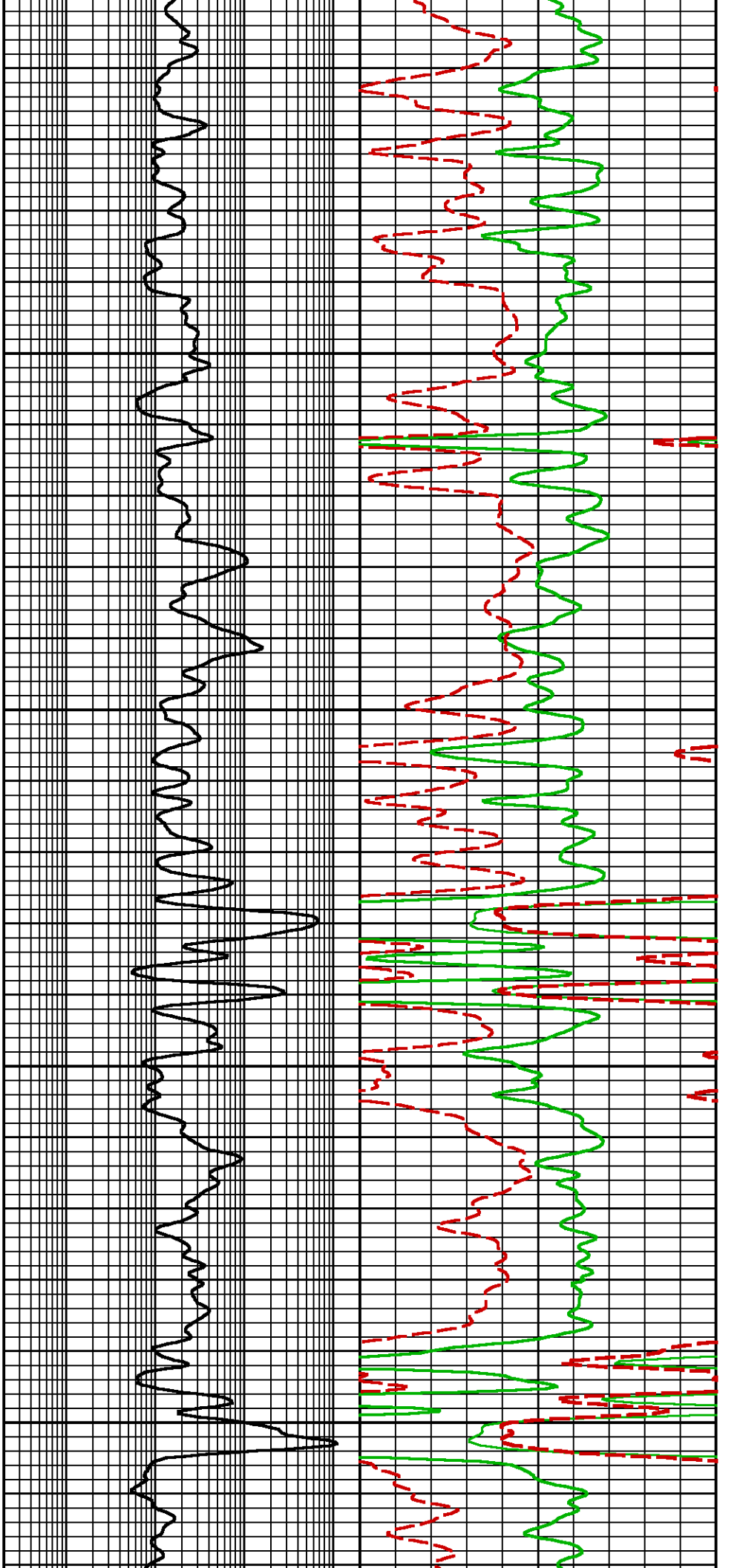


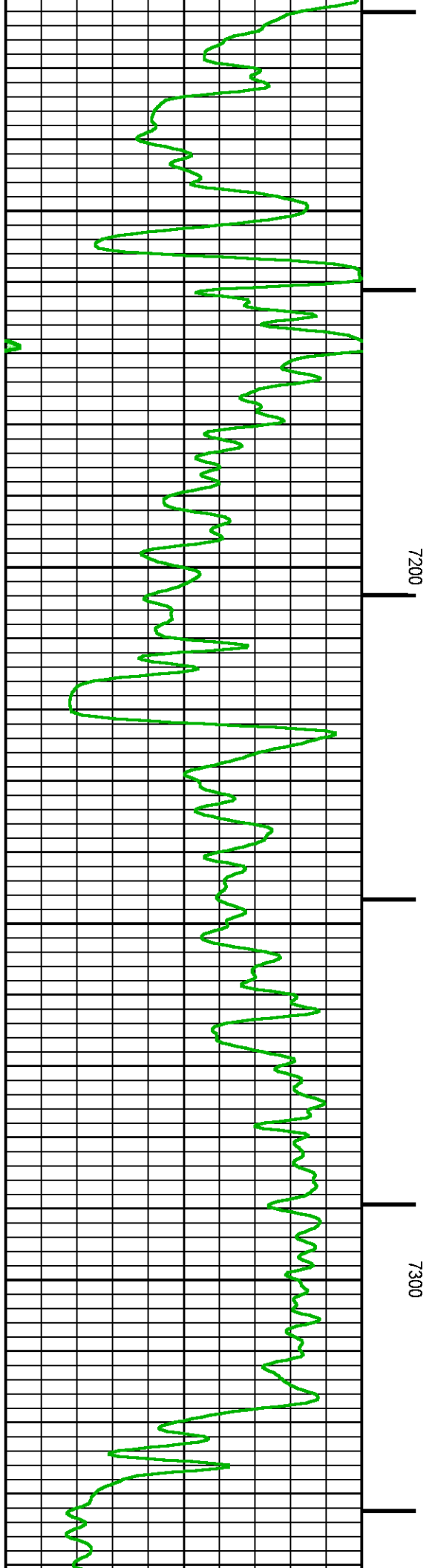
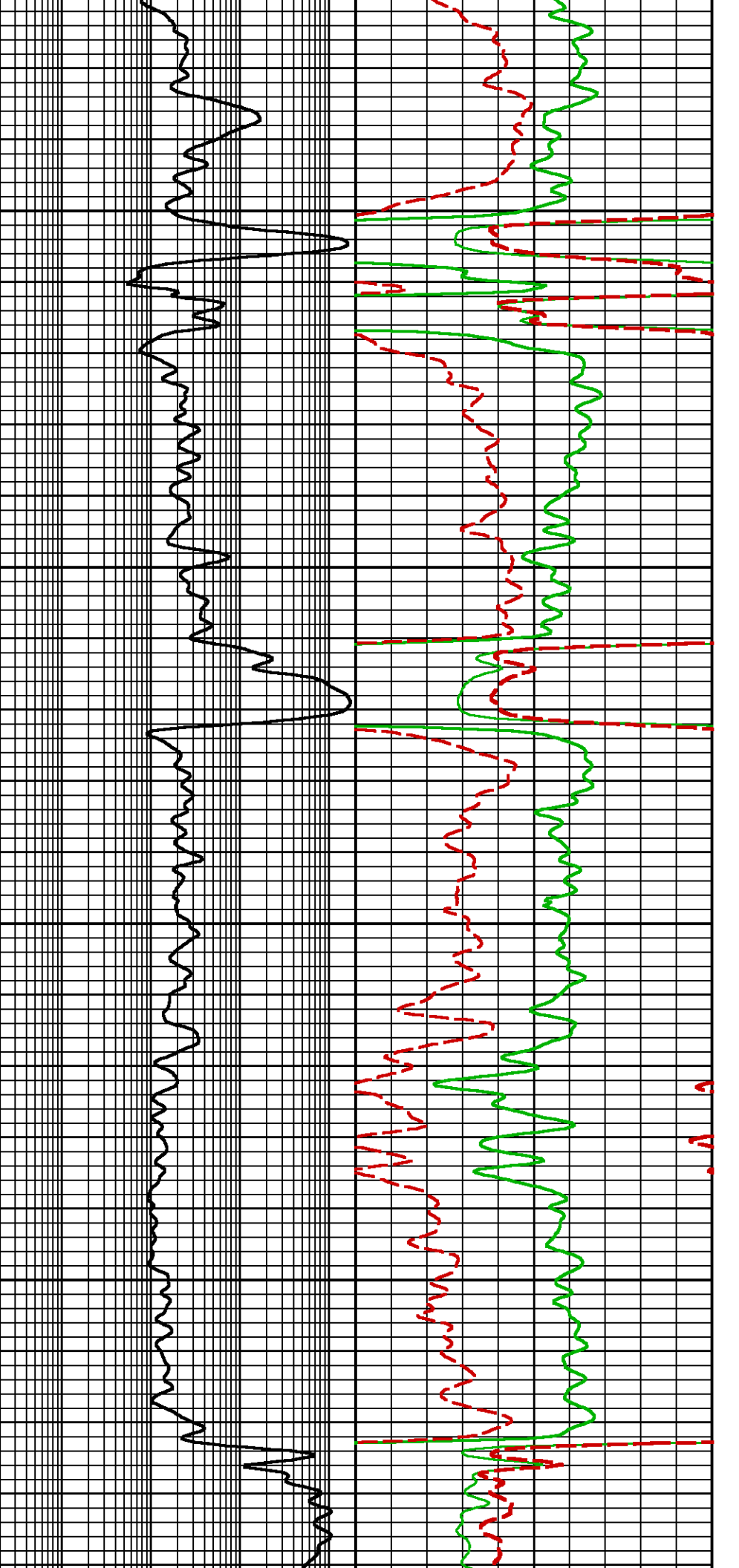


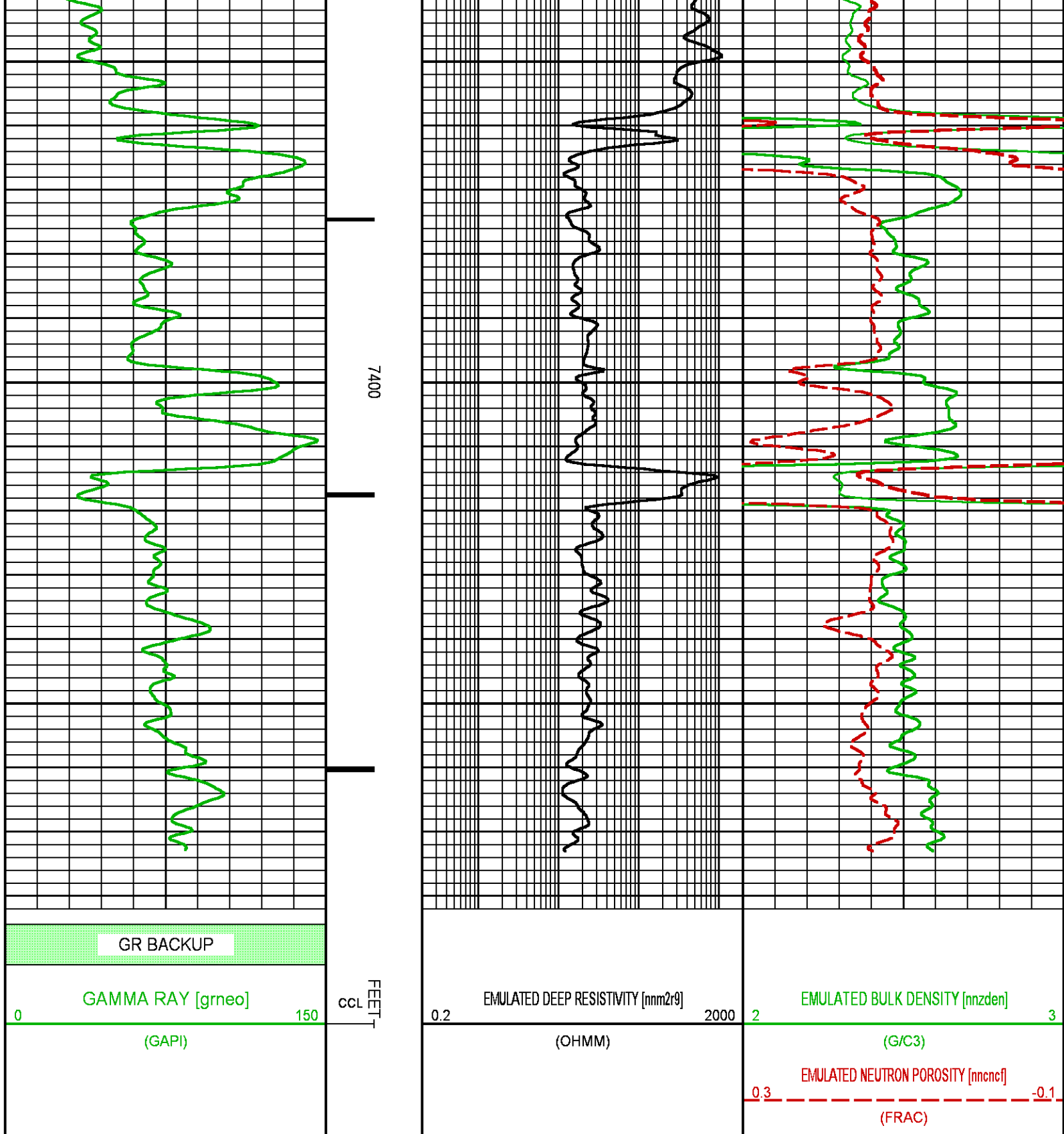












**BAKER
HUGHES**
a GE company



COMPANY
WELL
FIELD
COUNTY

LARAMIE ENERGY LLC
NICHOLS 0994-24-12E
VEGA
MESA

STATE **COLORADO**

FILE NO:

API NO:

05-077-10385-0000

LOCATION:

SEE REMARKS

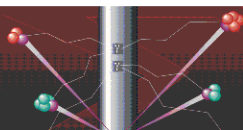
ELEVATIONS:

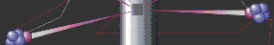
KB 7236 FT

DF

GL 7212 FT

ed Neutron
ation Evaluation



SEC 24 TWP 9S RGE 94WDATE 5-JUL-2018