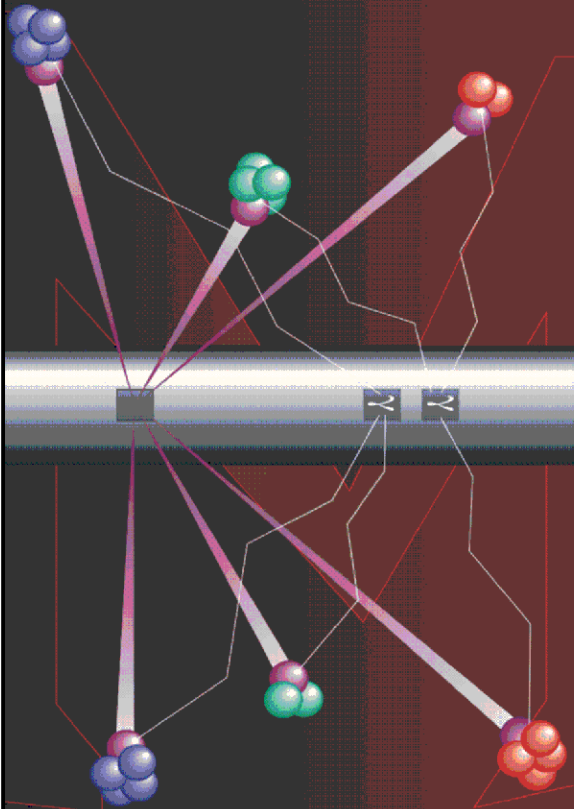


Pulsed Neutron Formation Evaluation



RESERVOIR PERFORMANCE MONITOR NEO Neutron Emulated Openhole

COMPANY LARAMIE ENERGY LLC

WELL NICHOLS 0994-24-12W

FIELD VEGA

COUNTY MESA STATE COLORADO

LOCATION:

SEE REMARKS

SEC 24 TWP 9S RGE 94W

ELEVATIONS:

KB 7236 FT DF GL 7212 FT

DATE 04-MAY-2018 ECC 136251

IN MAKING INTERPRETATIONS OF LOGS OUR EMPLOYEES WILL GIVE THE CUSTOMER THE BENEFIT OF THEIR BEST JUDGEMENT. BUT SINCE ALL INTERPRETATIONS ARE OPINIONS BASED ON INFERENCES FROM ELECTRICAL OR OTHER MEASUREMENTS, WE CANNOT, AND WE DO NOT GUARANTEE THE ACCURACY OR CORRECTNESS OF ANY INTERPRETATION. WE SHALL NOT BE LIABLE OR RESPONSIBLE FOR ANY LOSS, COST, DAMAGES, OR EXPENSES WHATSOEVER INCURRED OR SUSTAINED BY THE CUSTOMER RESULTING FROM ANY INTERPRETATION MADE BY ANY OF OUR EMPLOYEES.

COMPUTATION PARAMETERS

COMPUTATION	LOGS USED: <u>RPM-C</u>		PROGRAM: <u>NEO</u>
	CENTER: <u>HOUSTON</u>	LOG ANALYST: <u>KIMBERLY ELLSWORTH</u>	DATE: <u>04-MAY-2018</u>
FIELD DATA	LOCATION: <u>GRAND JUNCTION</u>	ENGINEER: <u>M. BAUKA</u>	DATE: <u>25-APR-2018</u>

FROM	TO								
<u>2094 FT</u>	<u>7420 FT</u>								

REMARKS

LOCATION: SHL: 2271' FNL & 2785' FWL
BHL: 2299' FSL & 1491' FWL

TRAINING WELL:
NICHOLS 24-06W

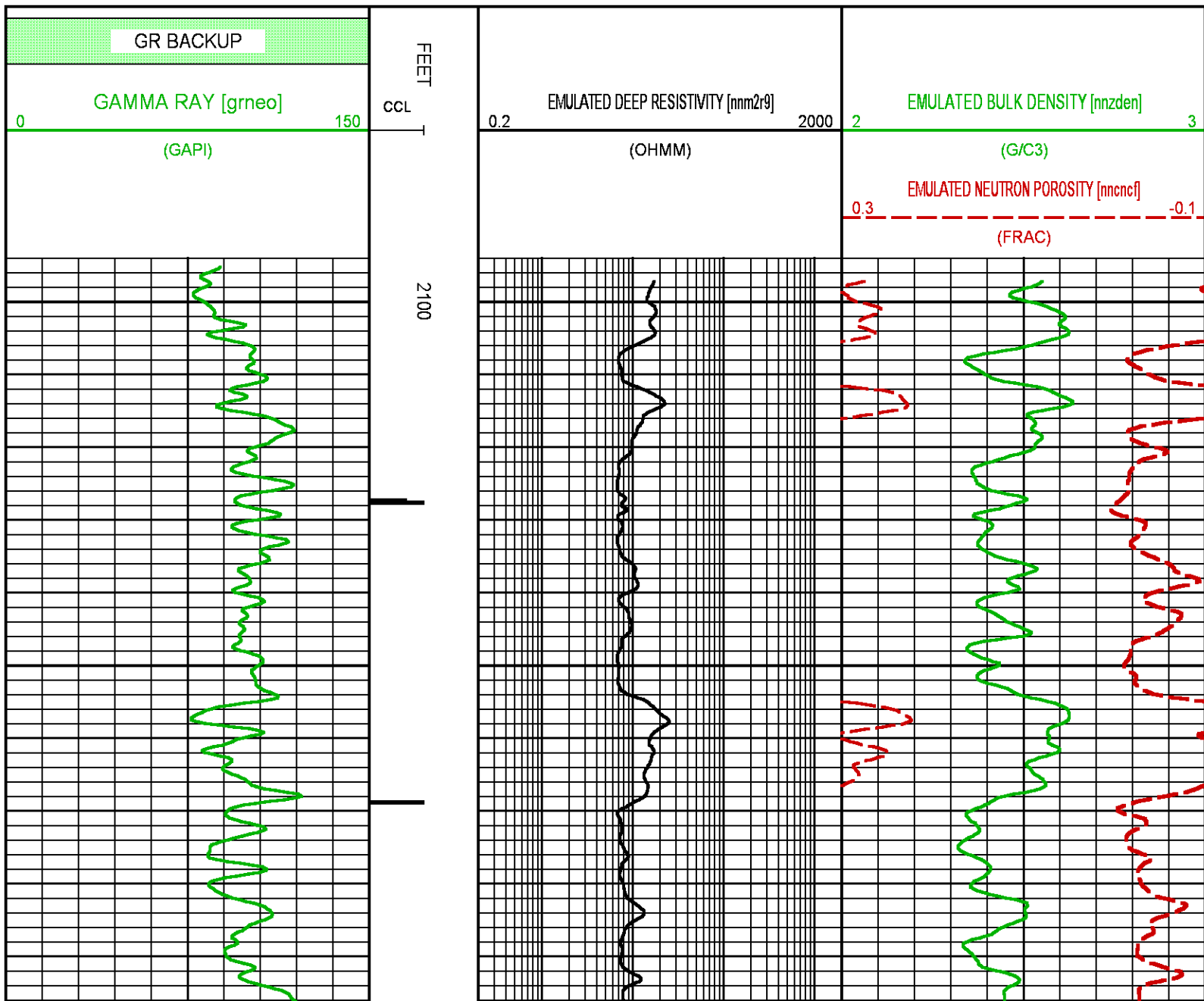
ANY ERRORS IN THE TRAINING WELL OPENHOLE DATA CAN PERETUATE THROUGH AS ERROR IN THE EMULATED RESULTS

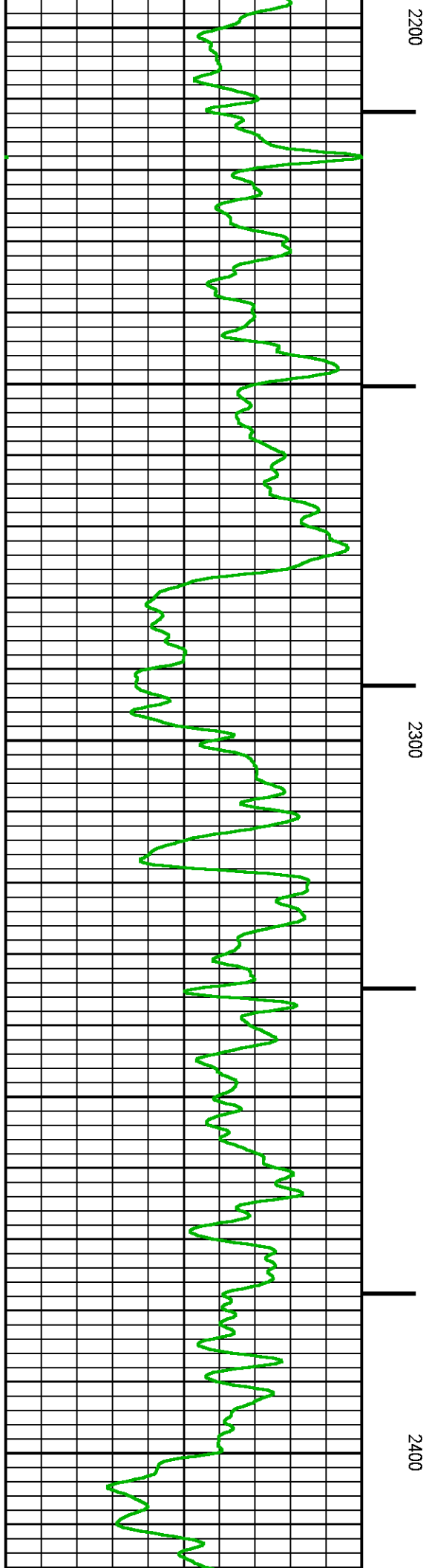
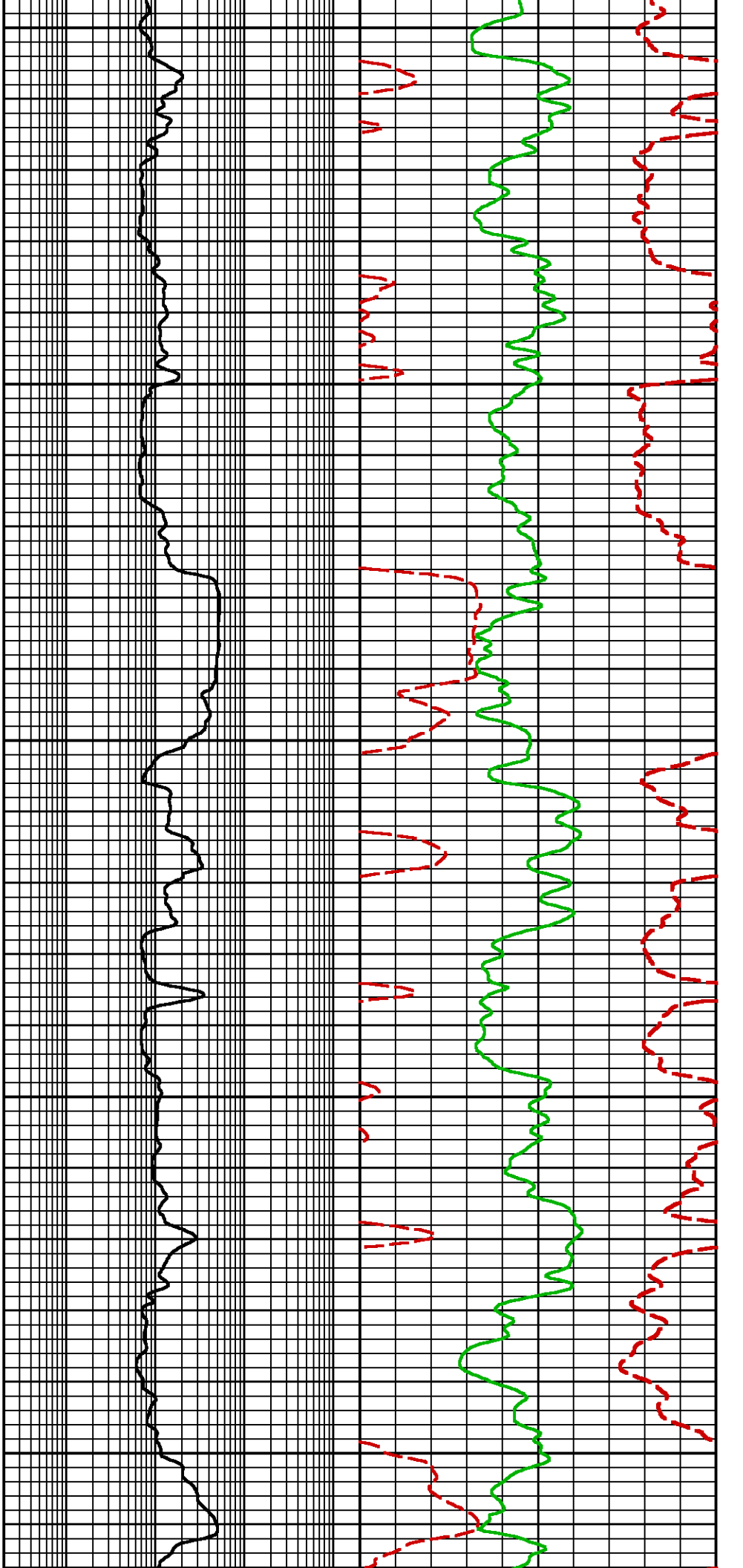
BOND LOG IS DEPTH REFERENCE LOG

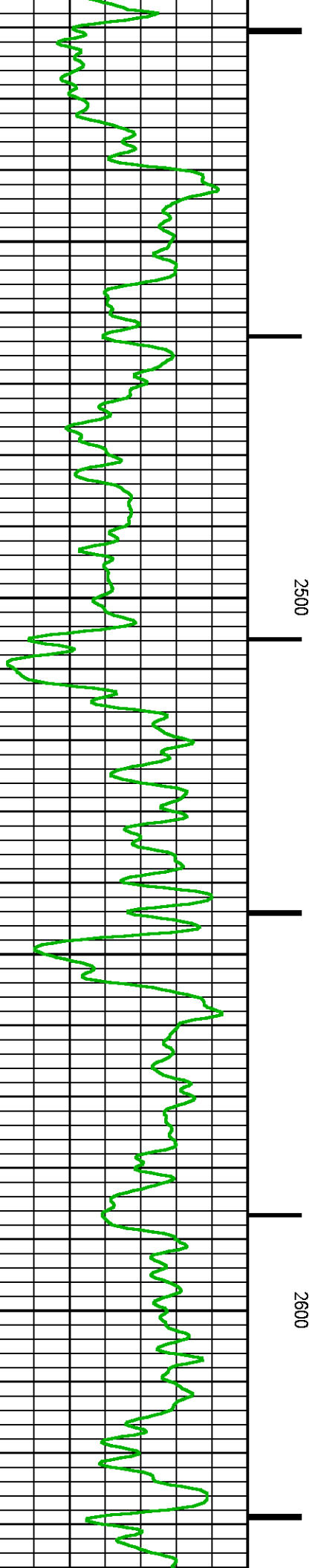
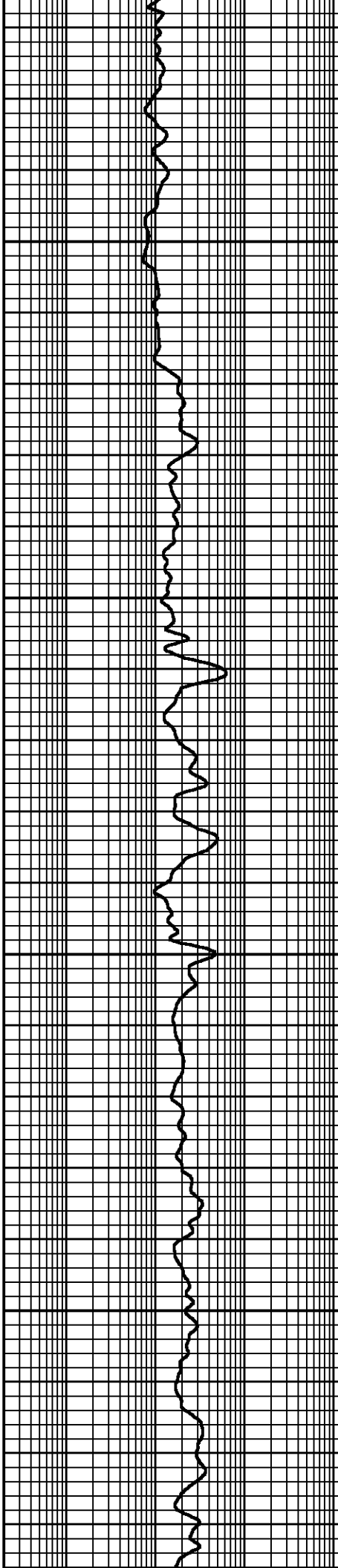
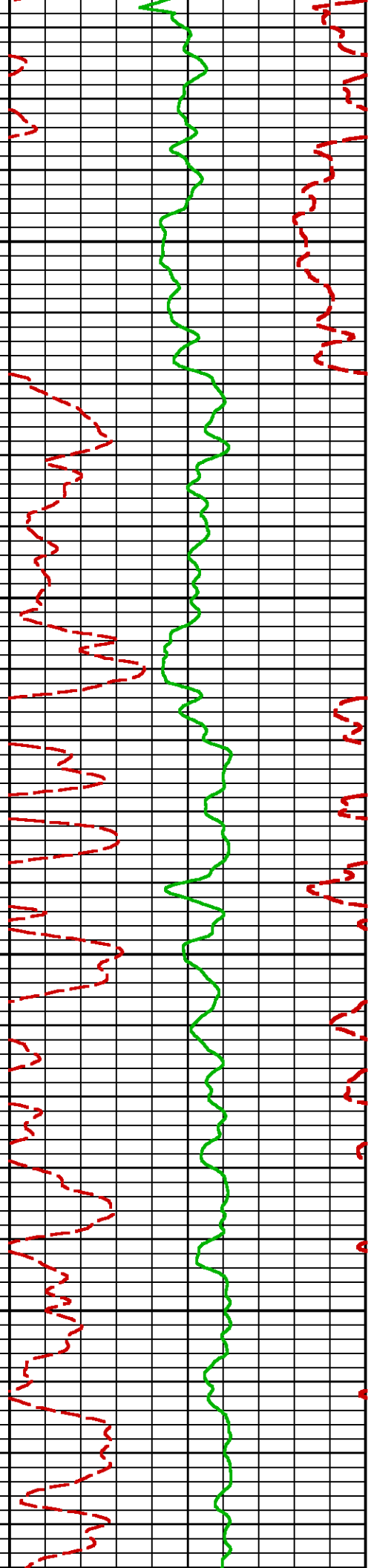
NEO RESULTS FOR NICHOLS 0994-24-12W (G-SAND)

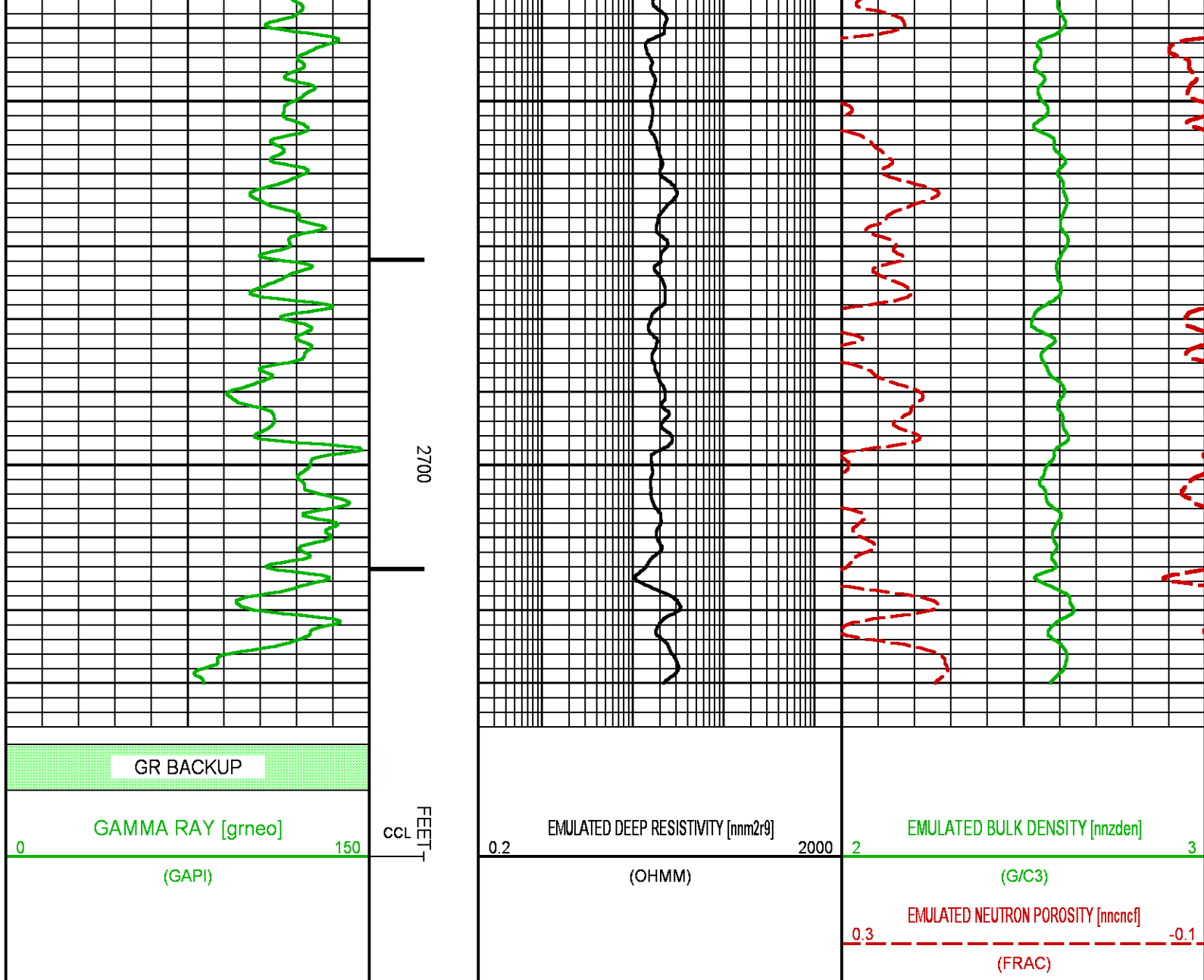
Project : NA
User : ellskima
Presentation : BHI3BKZH12:C:\Ape_Projects\laramie_nichols_24_12w\NEO_PRESENTATION_LARAMIE_G-Sand.pdf [5"/100' Scale]
Plot Interval : 2095.25 - 2735 Feet

Data File 1 : F1 : BHI3BKZH12:C:\Ape_Projects\laramie_nichols_24_12w\Merged_Set_Final.xtf
Created On : N/A
Company : LARAMIE ENERGY LLC
Well : NICHOLS 0994-24-12W
Field : VEGA
File Interval : 2095.25 - 7419.25 Feet
OCT : NA





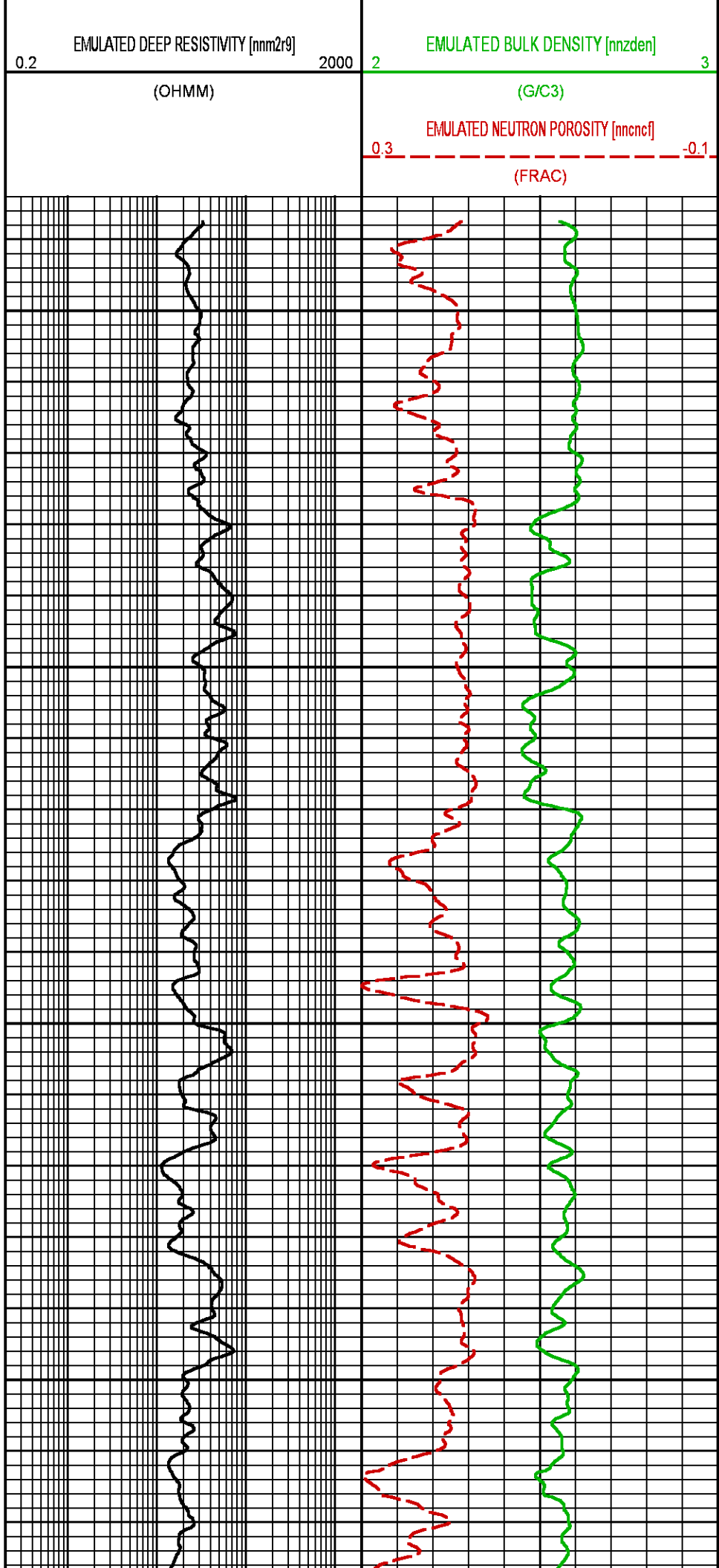
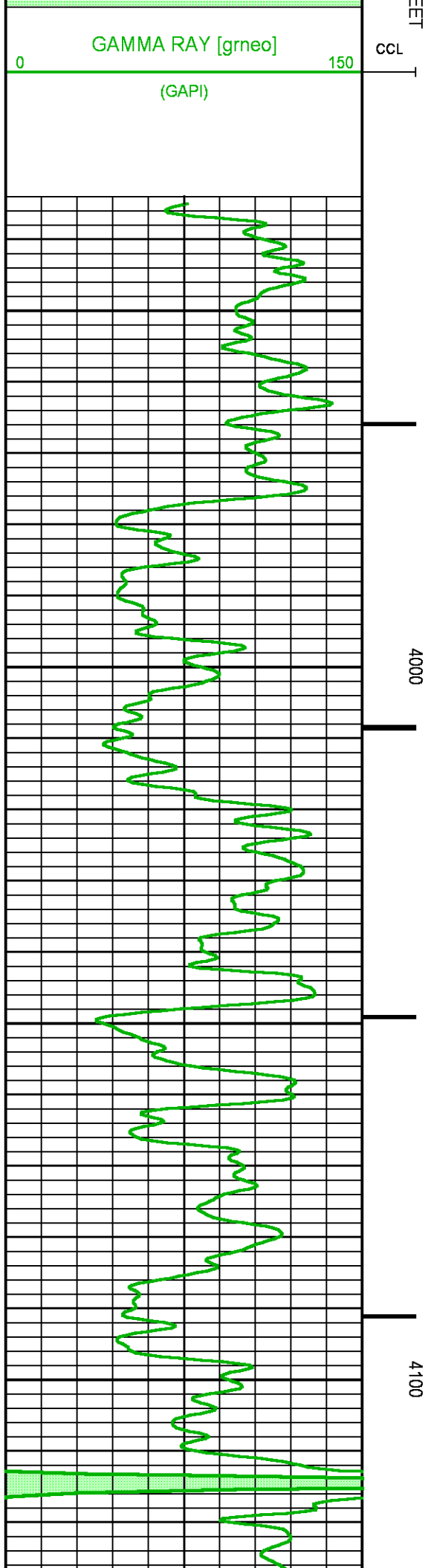


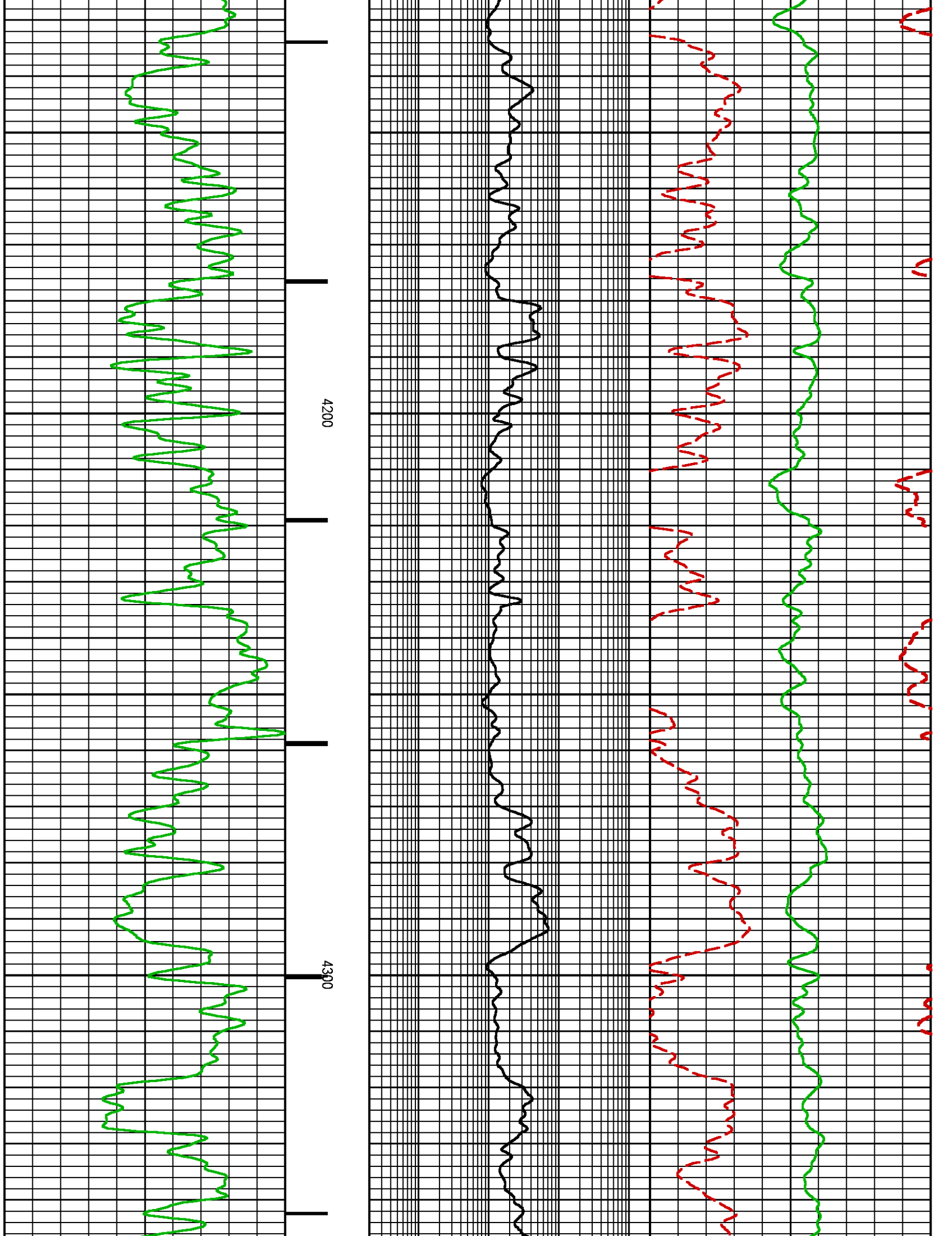


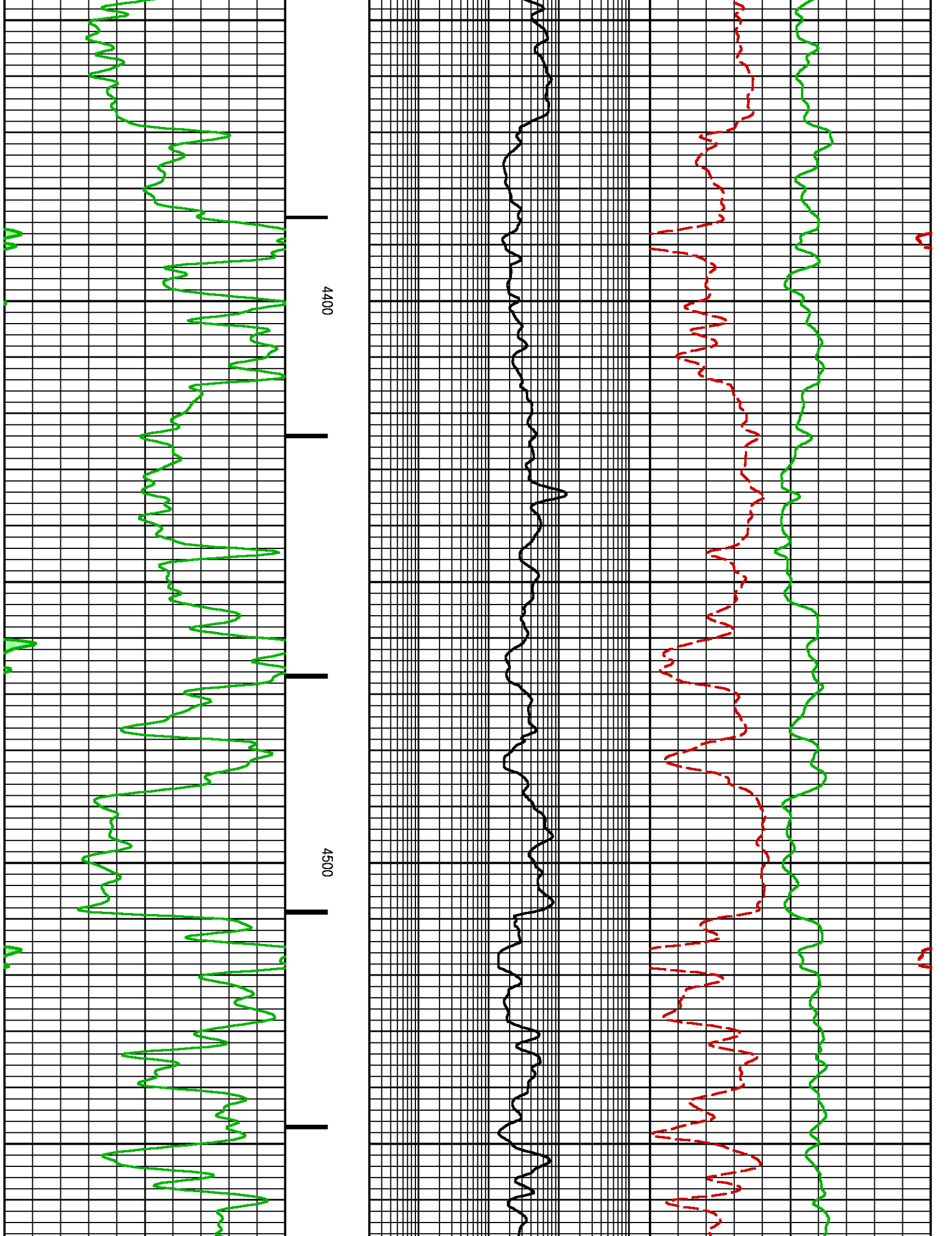
NEO RESULTS FOR NICHOLS 0994-24-12W (MAIN)

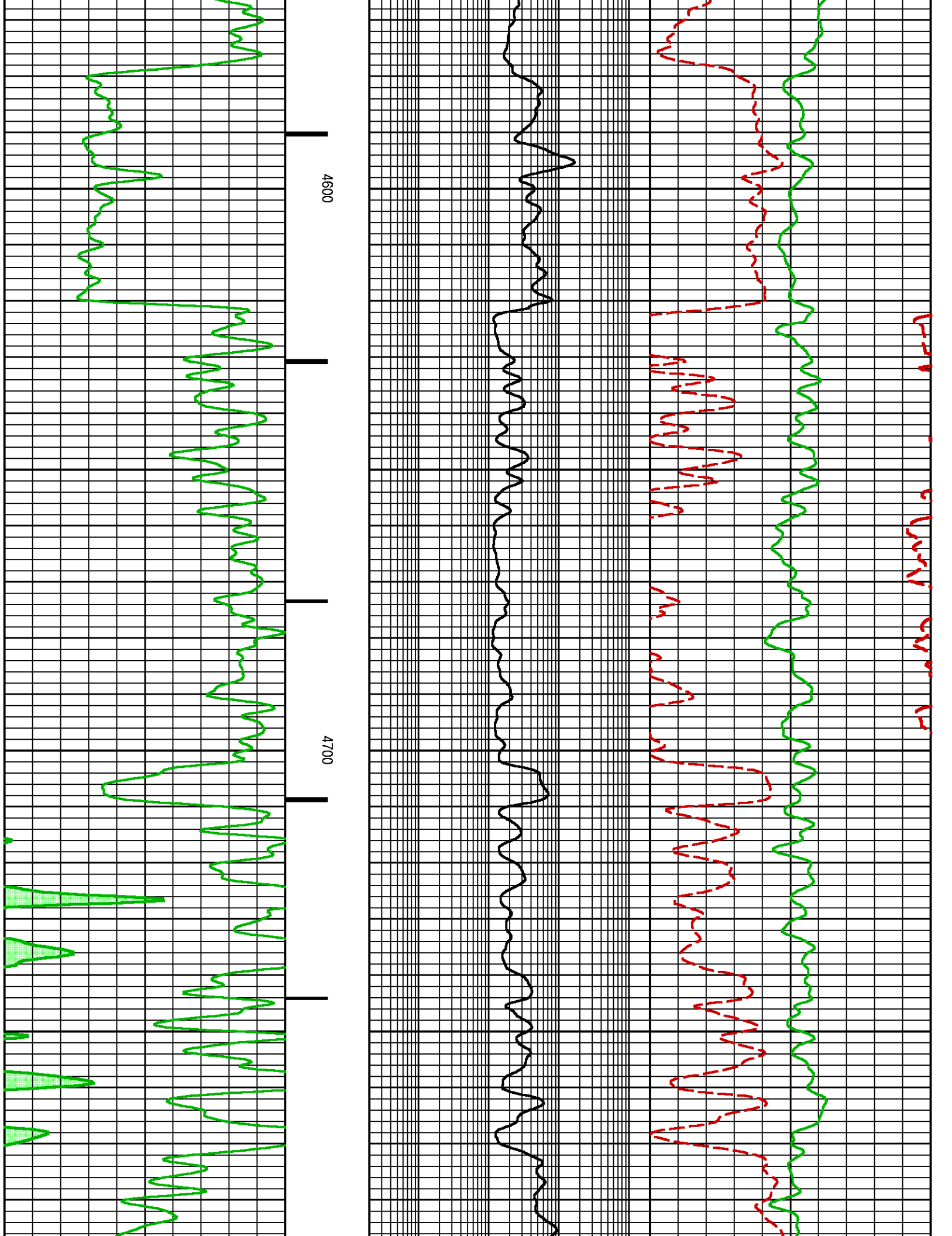
Project : NA
User : ellskima
Presentation : BHI3BKZH12:C:\Ape_Projects\laramie_nichols_24_12w\NEO_PRESENTATION_LARAMIE_MAIN.pdf [5"/100" Scale]
Plot Interval : 3935 - 7419.25 Feet

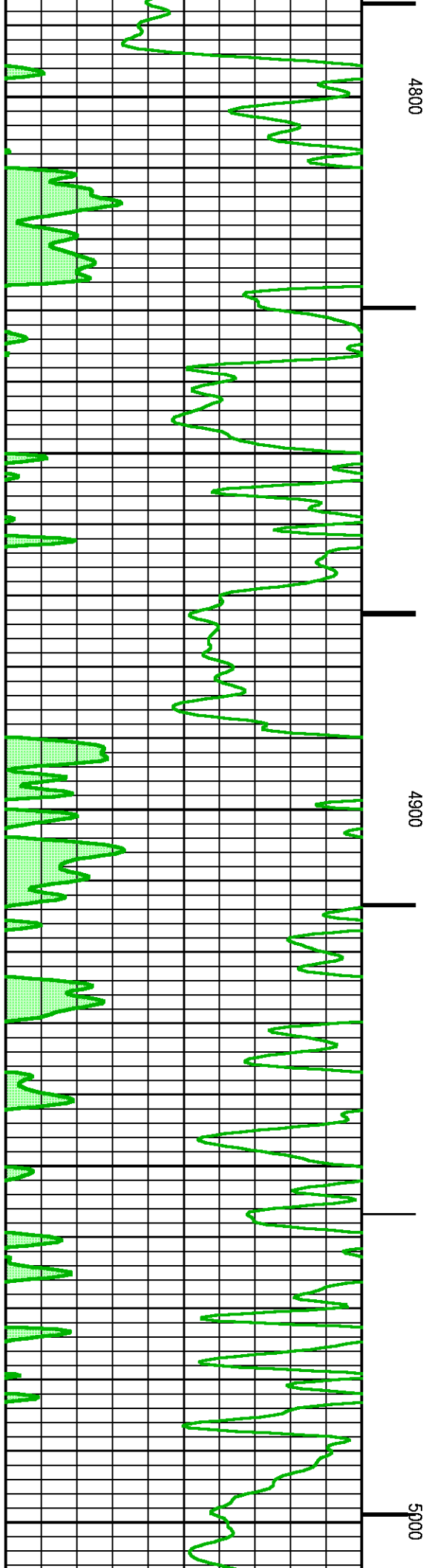
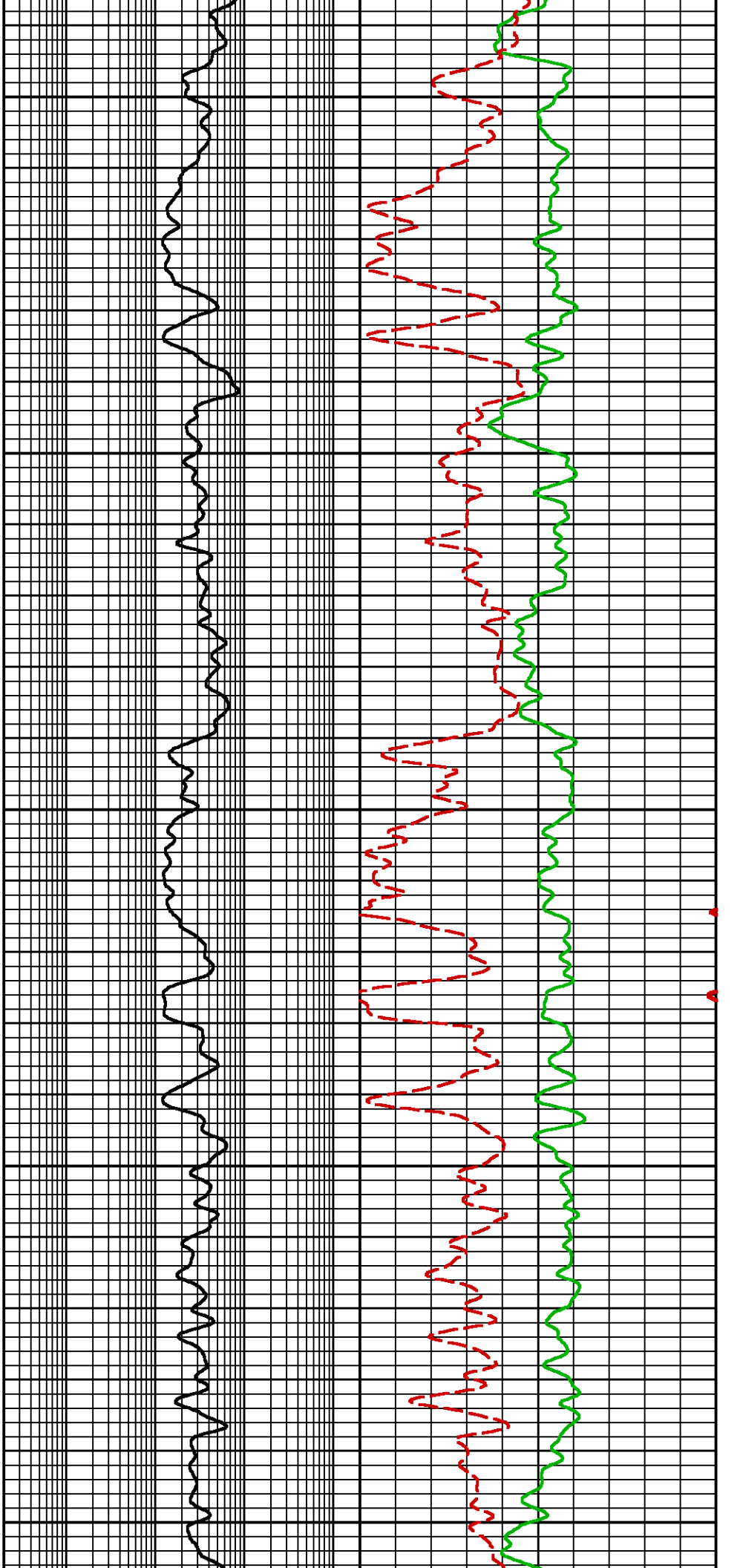
Data File 1 : F1 : BHI3BKZH12:C:\Ape_Projects\laramie_nichols_24_12w\Merged_Set_Final.xtf
Created On : N/A
Company : LARAMIE ENERGY LLC
Well : NICHOLS 0994-24-12W
Field : VEGA
File Interval : 2095.25 - 7419.25 Feet
OCT : NA

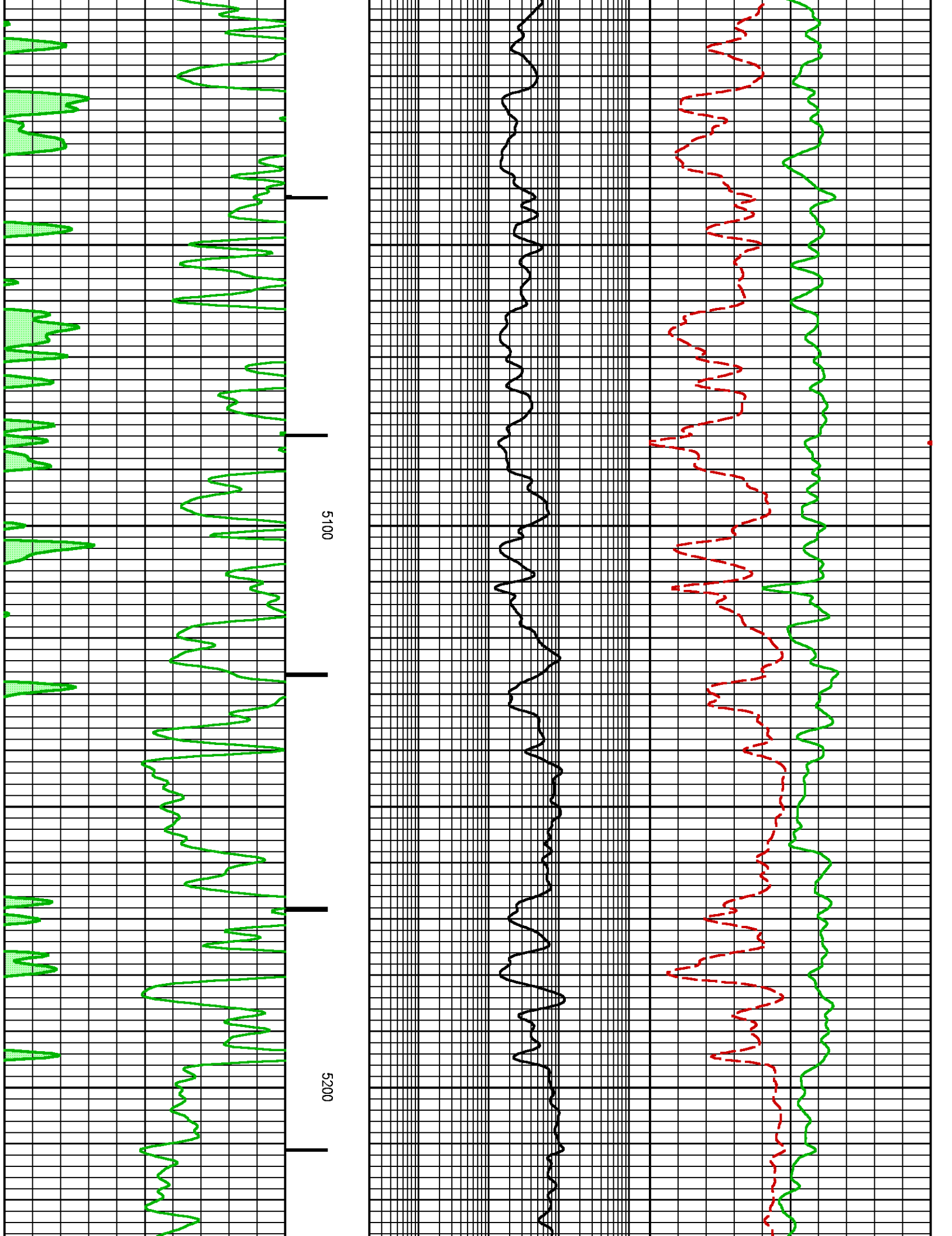


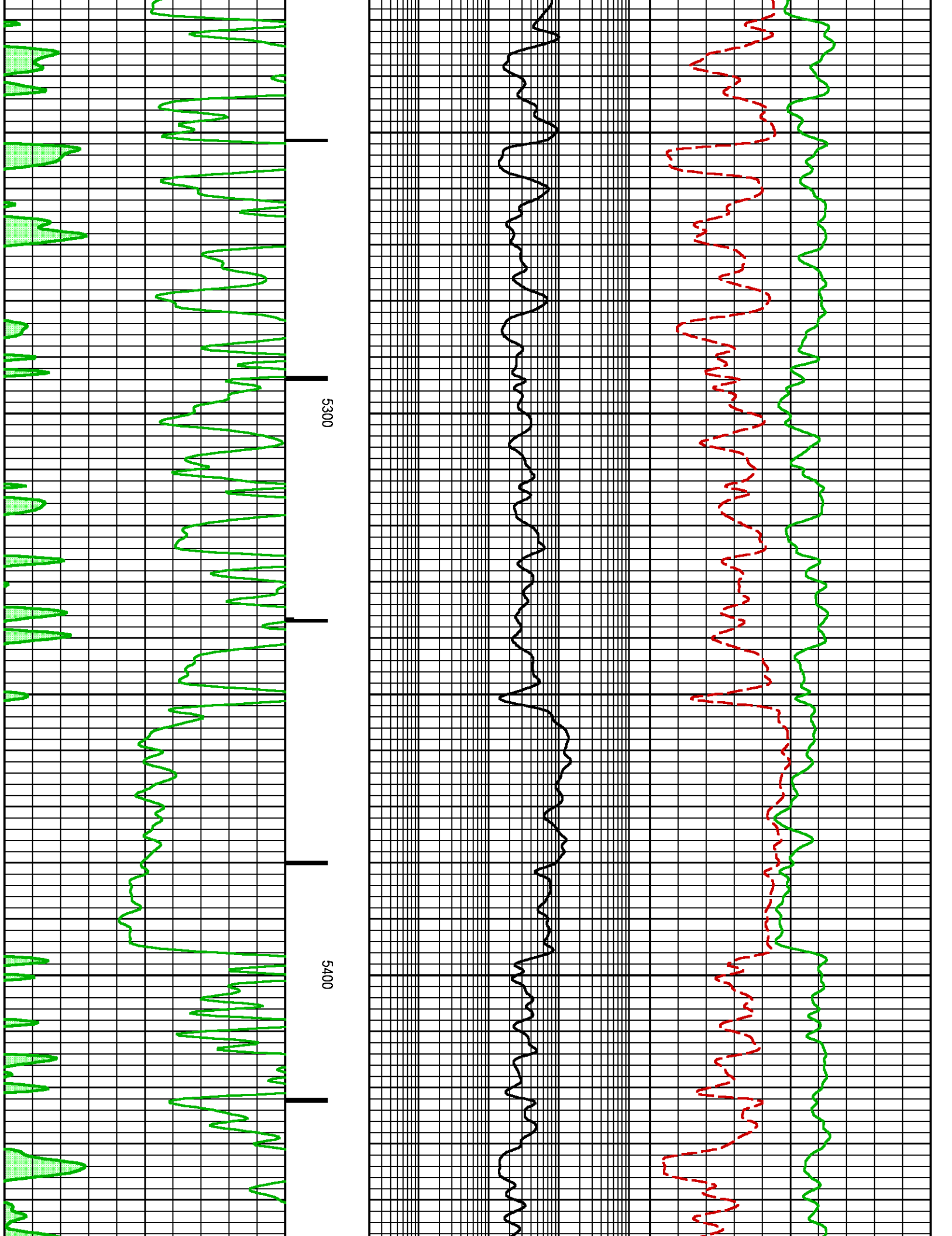


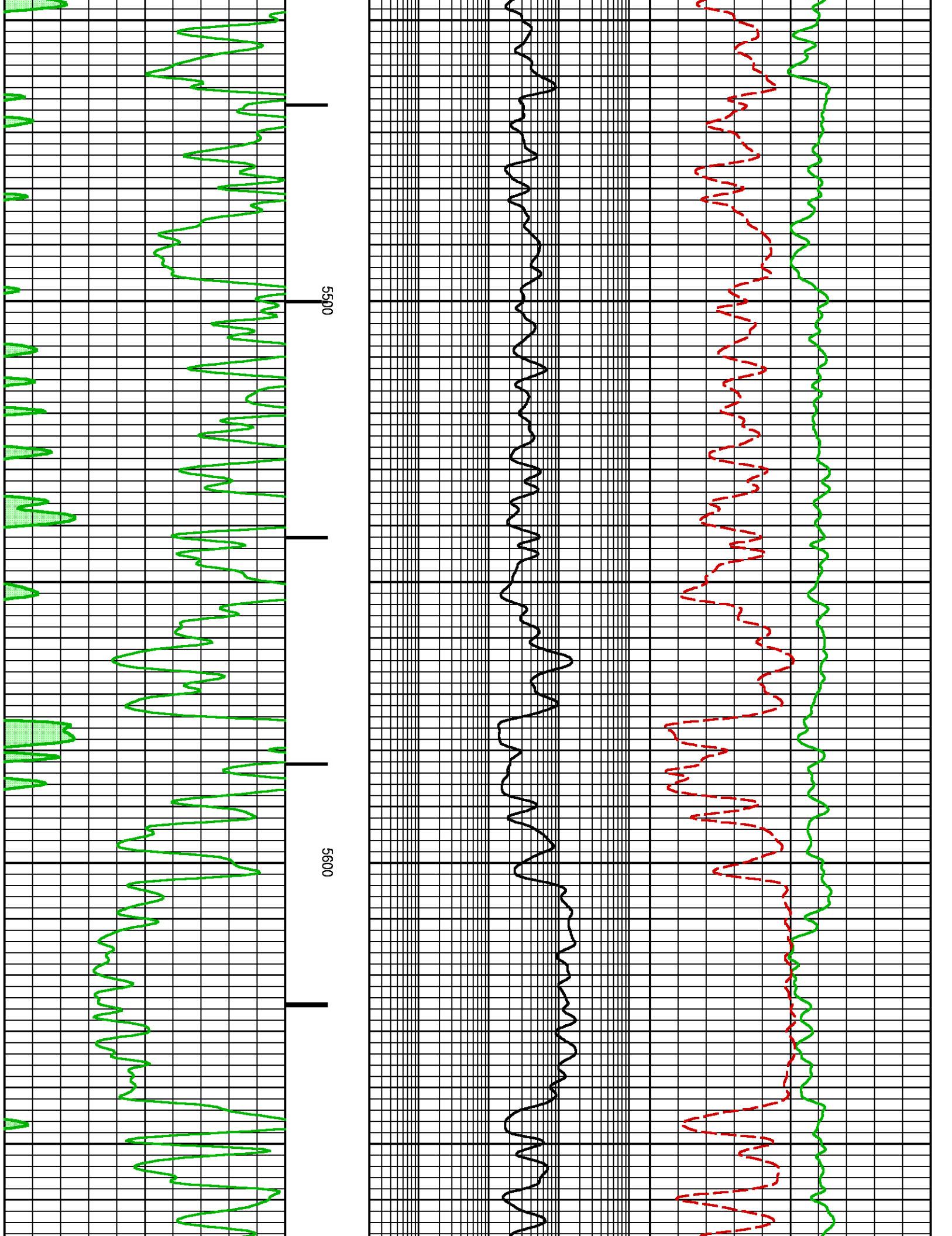


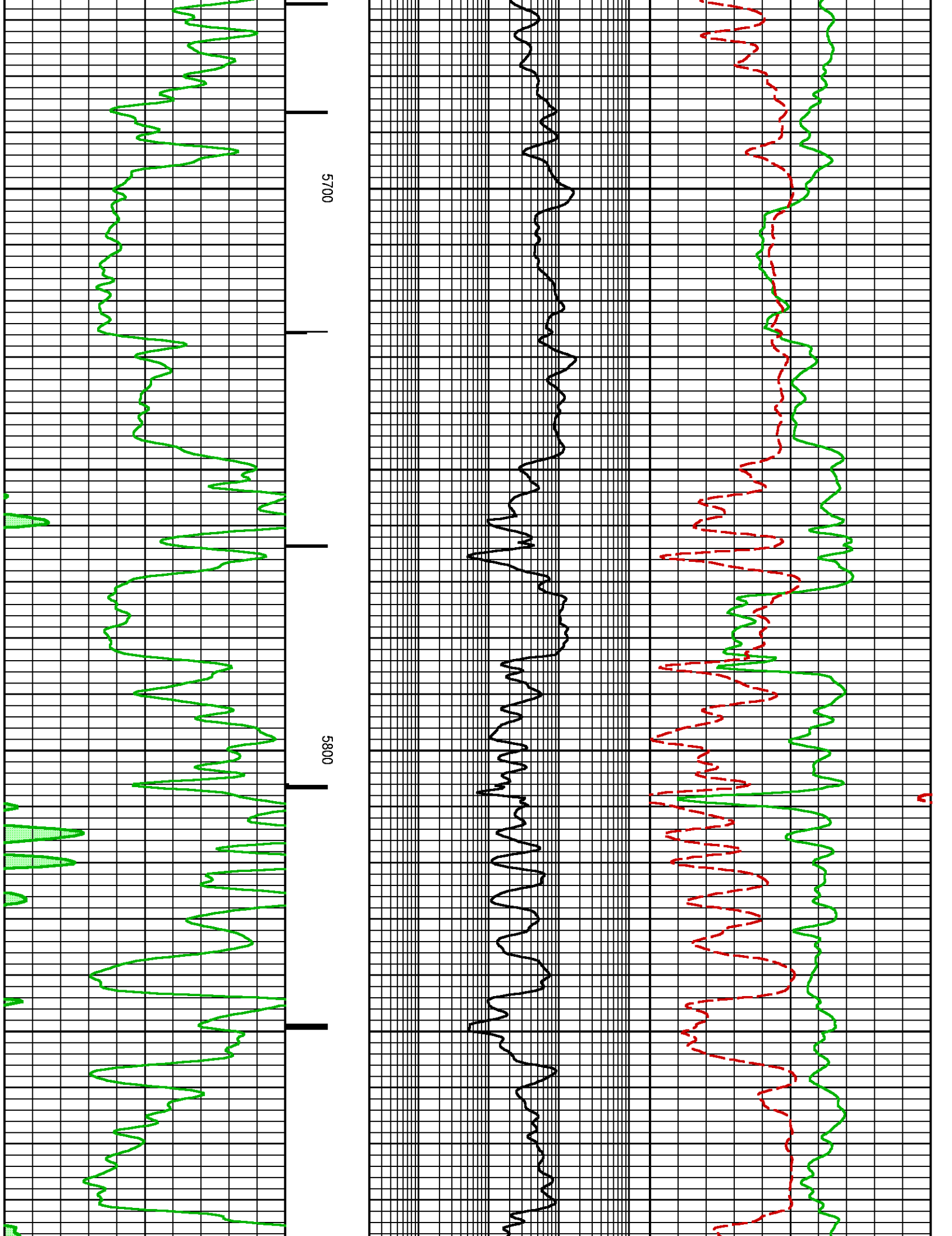


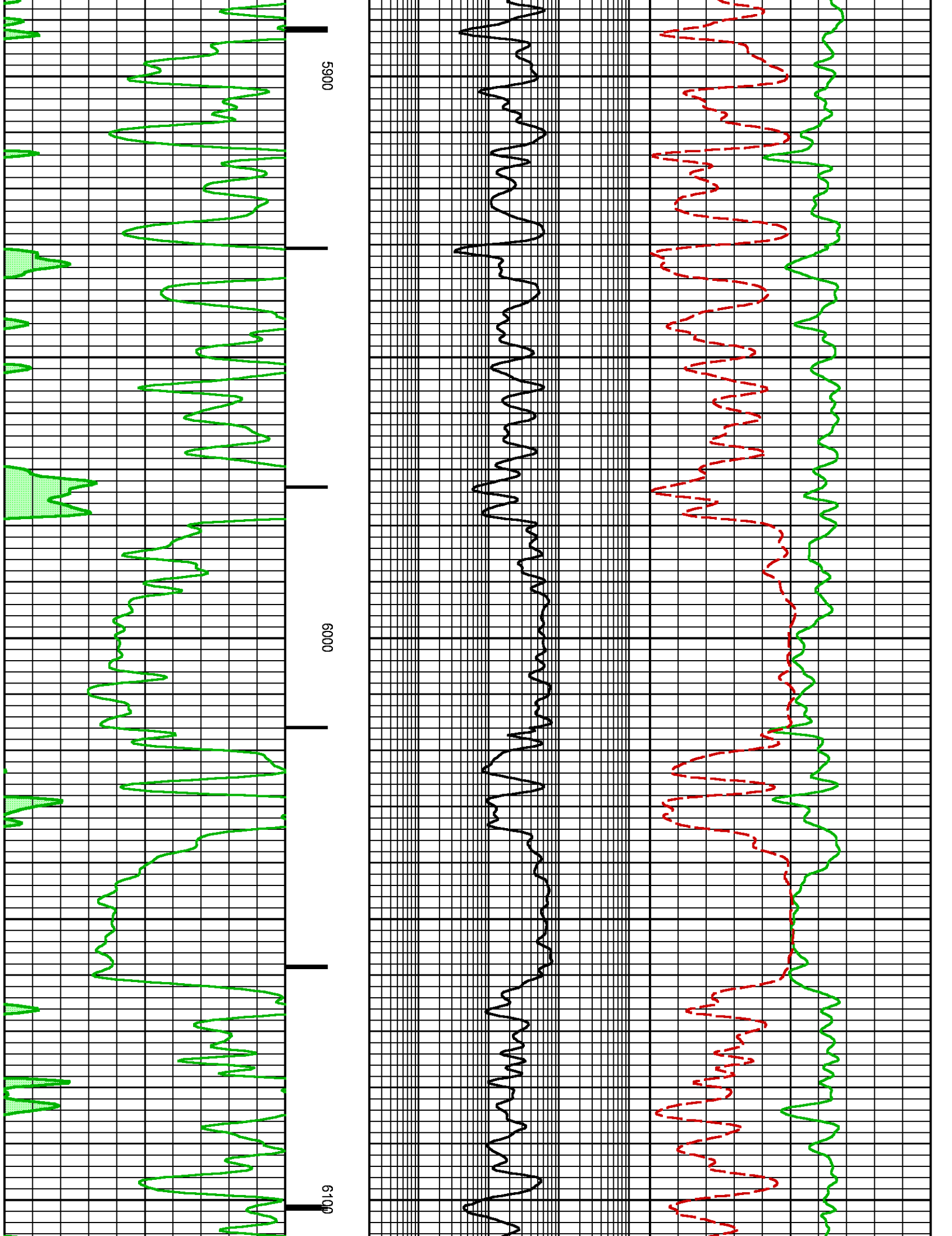


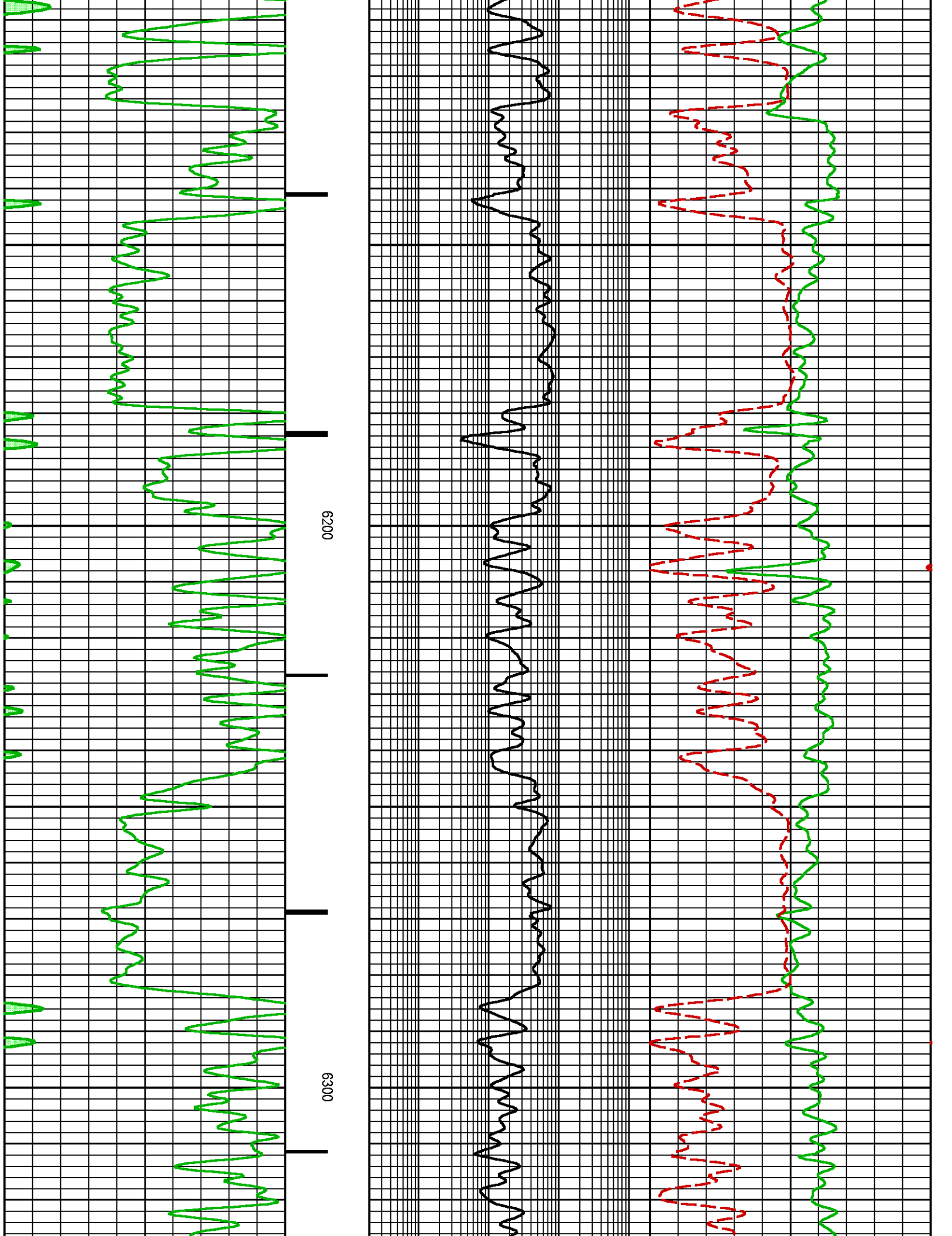


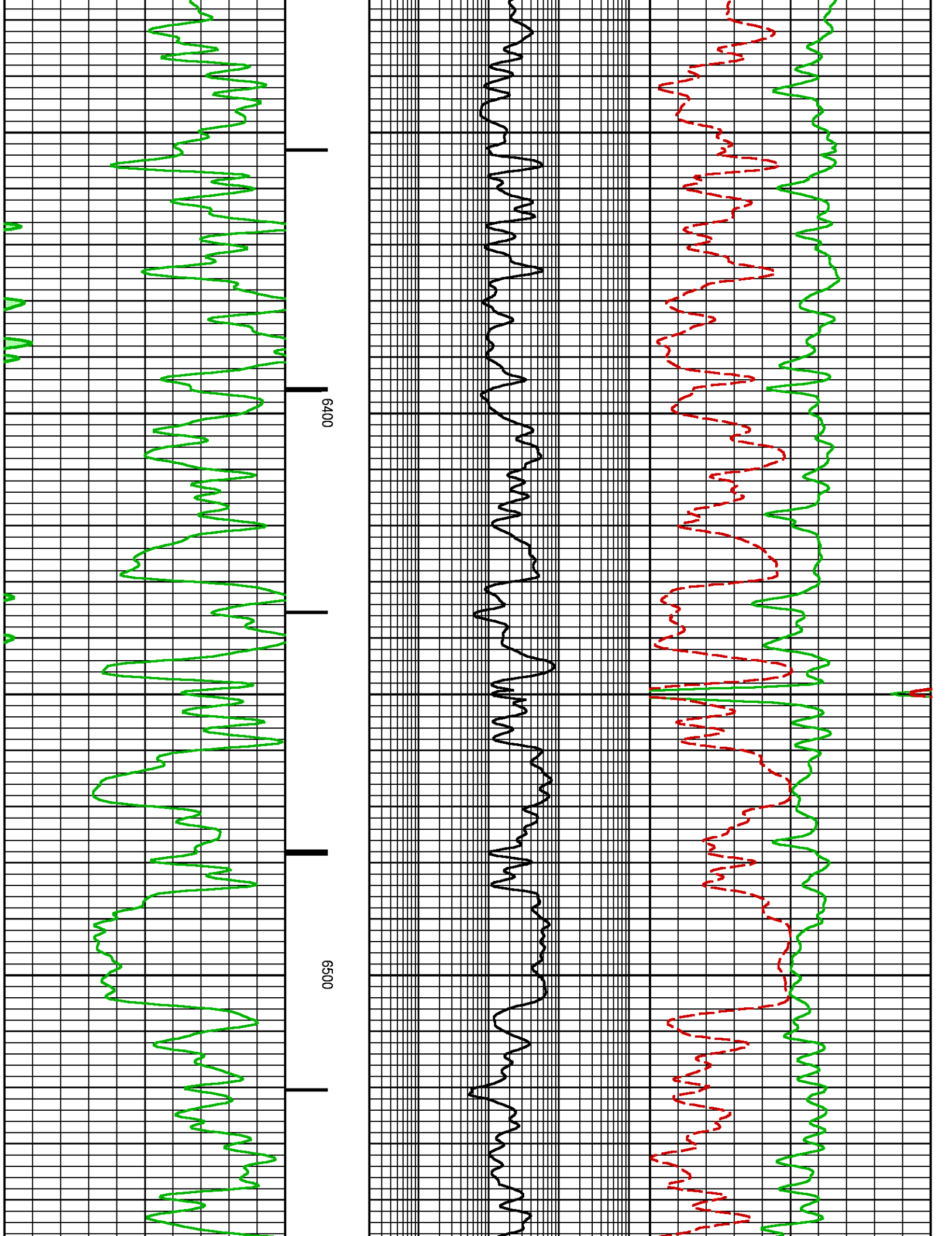


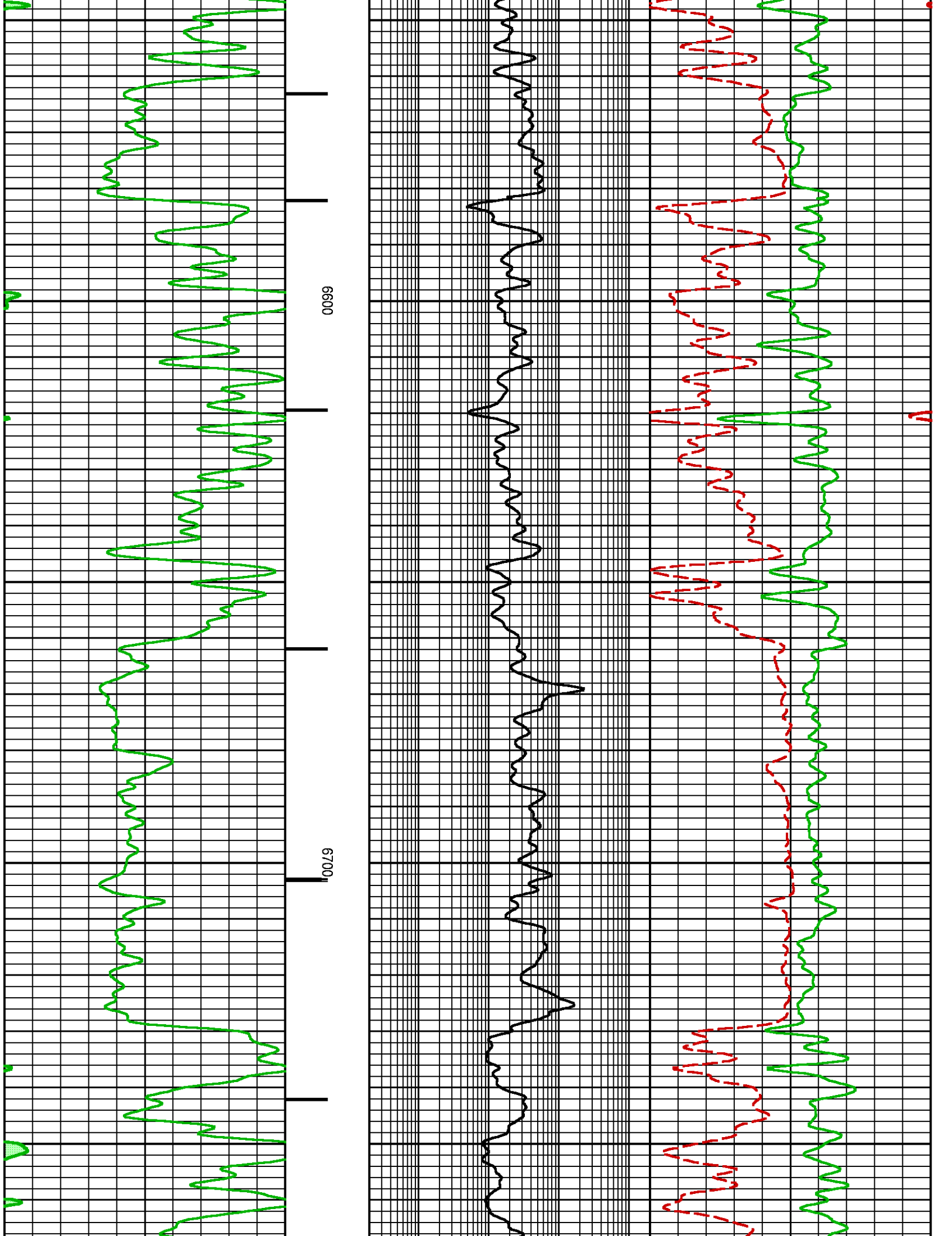


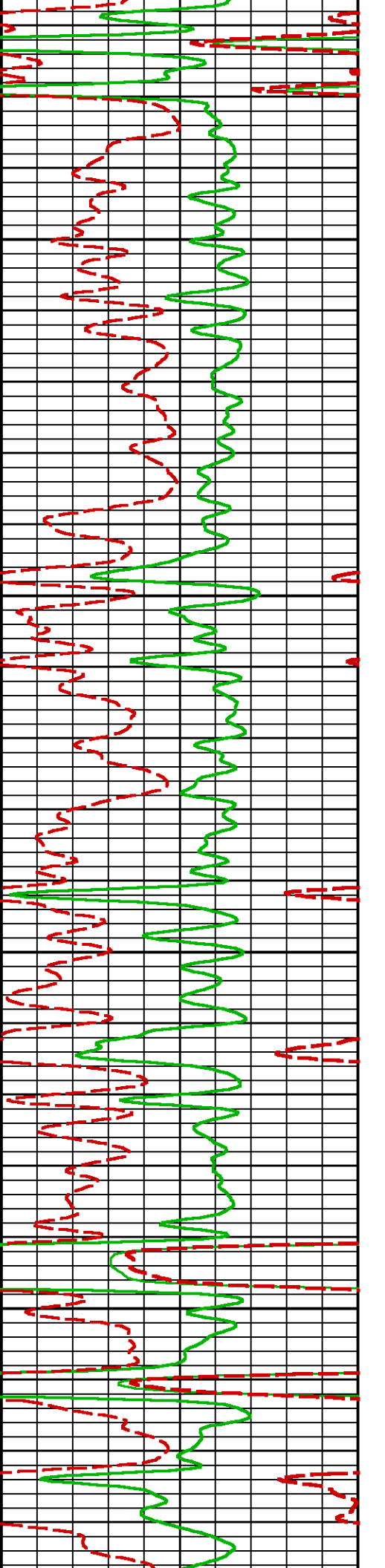
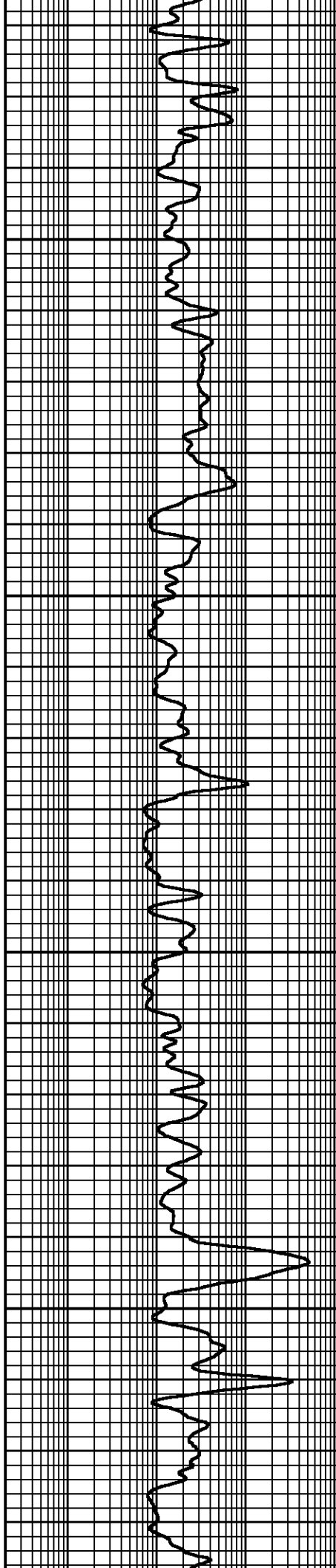
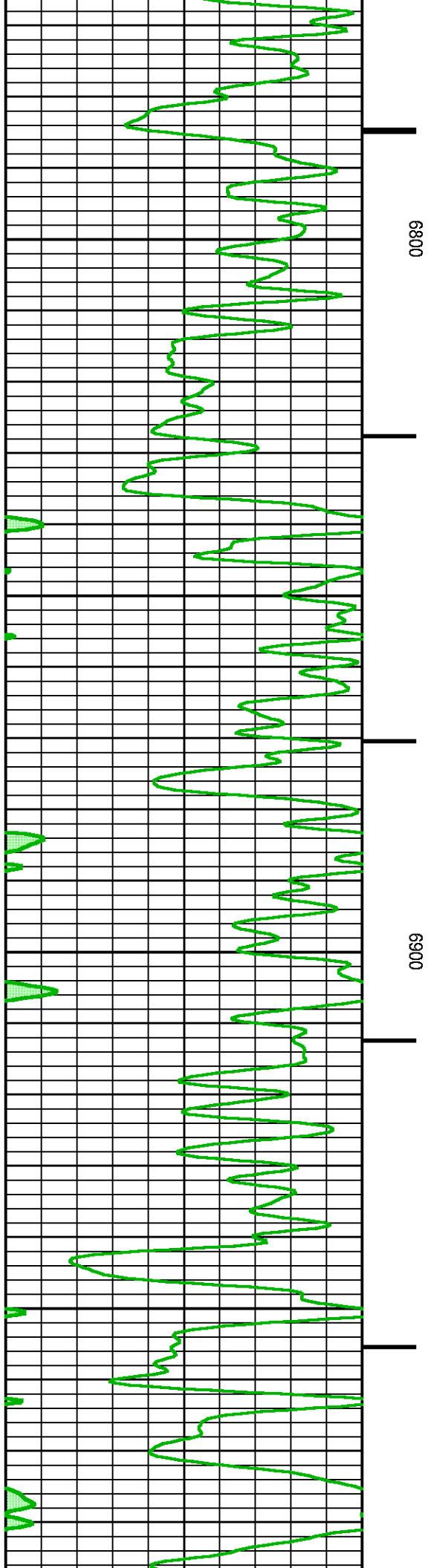


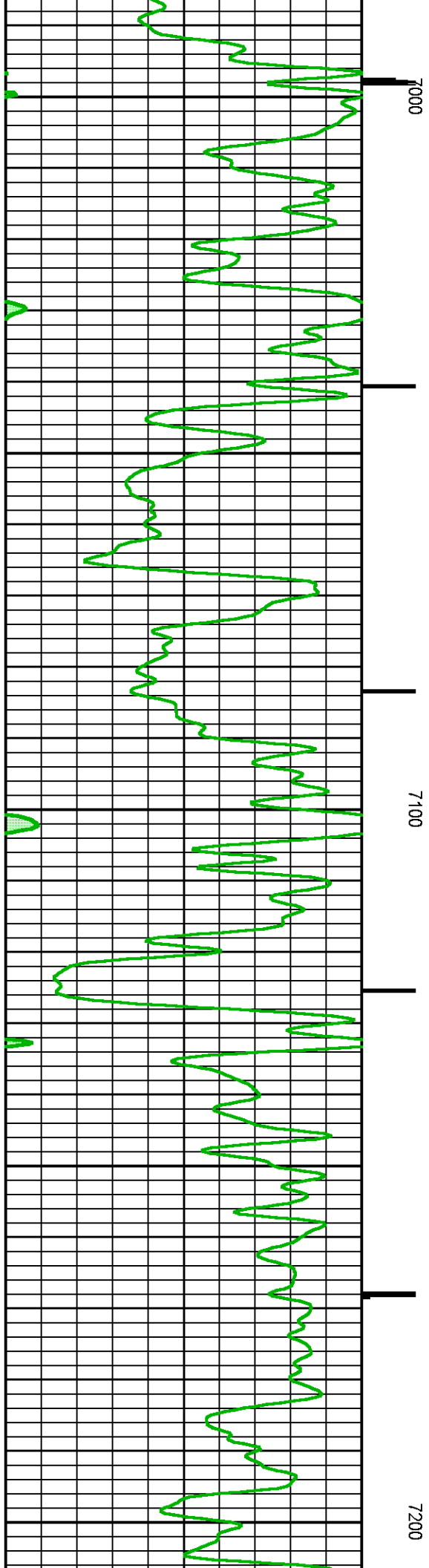
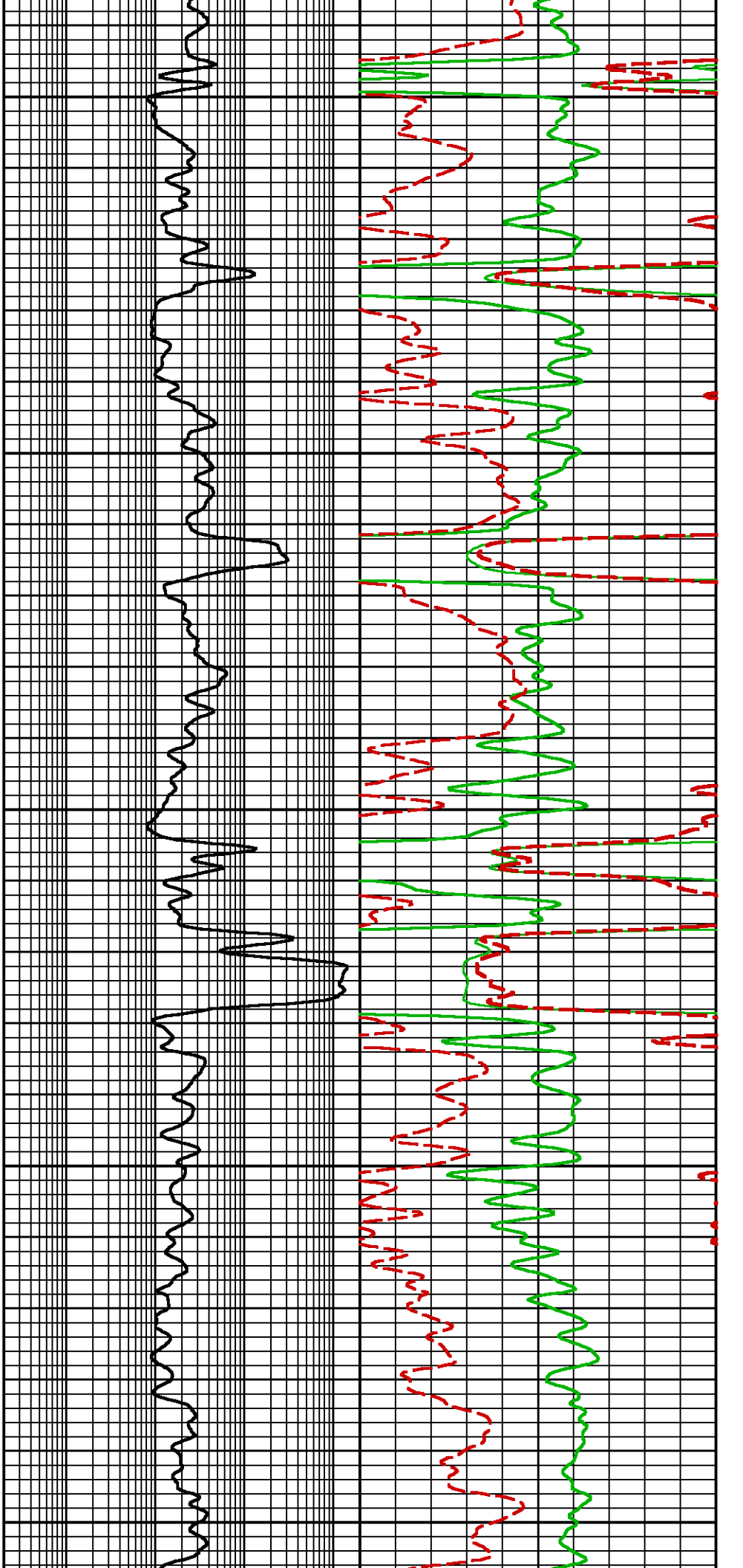


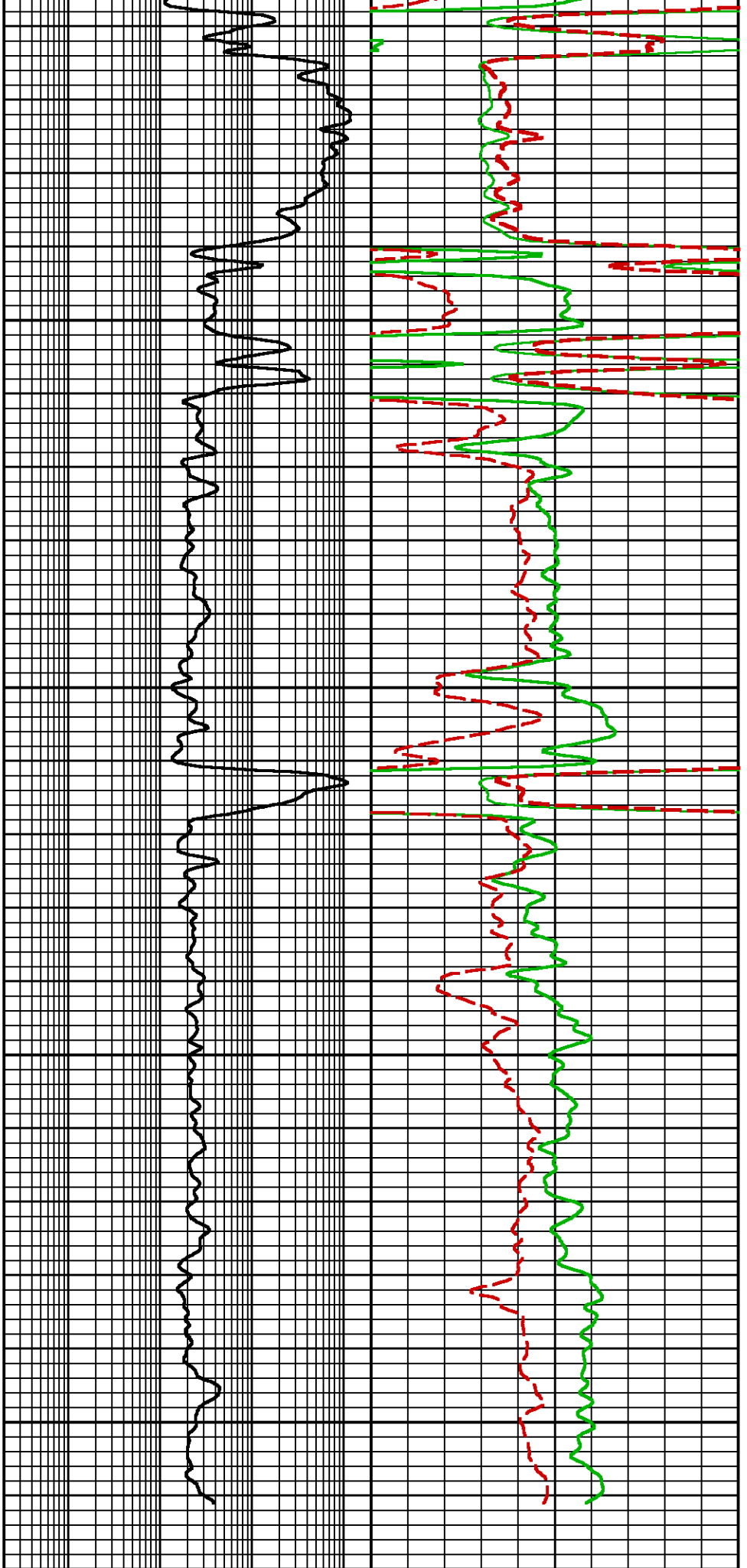






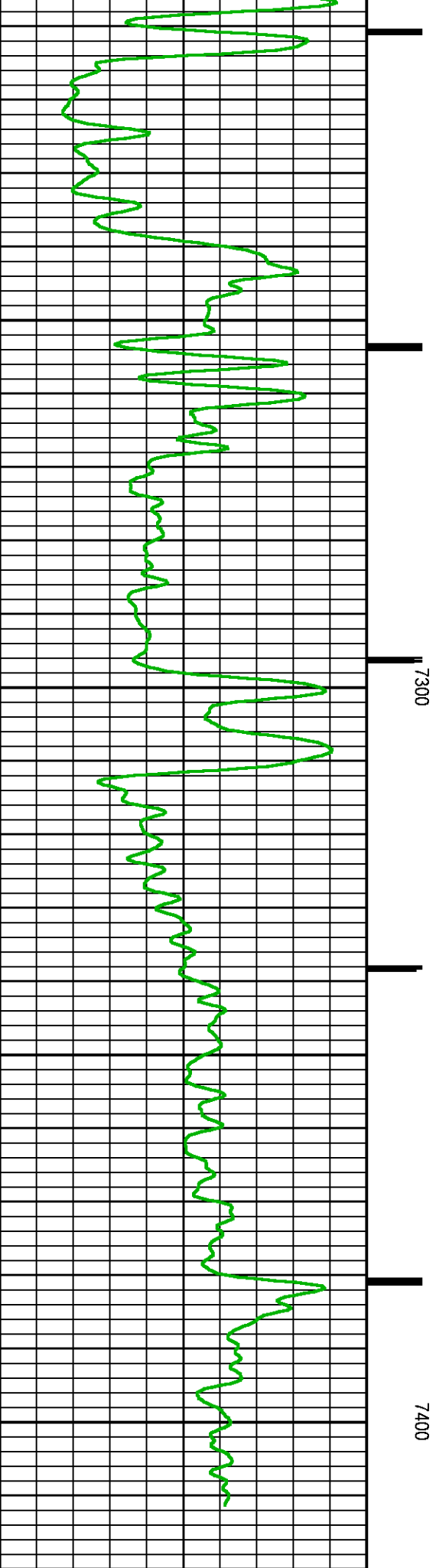






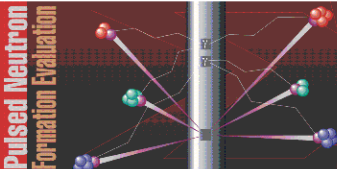


7300

7400



<div>0</div> <div>GAMMA RAY [grneo]</div> <div>150</div>	<div>CCL</div> <div>FEET</div>	<div>0.2</div> <div>EMULATED DEEP RESISTIVITY [nm2r9]</div> <div>2000</div>	<div>2</div> <div>EMULATED BULK DENSITY [nnzden]</div> <div>3</div>
<div>(GAPI)</div>		<div>(OHMM)</div>	<div>(G/C3)</div> <div>EMULATED NEUTRON POROSITY [nnncf]</div> <div>0.3</div> <div>(FRAC)</div> <div>-0.1</div>

 	<div>COMPANY</div> <div>LARAMIE ENERGY LLC</div> <div>WELL</div> <div>NICHOLS 0994-24-12W</div> <div>FIELD</div> <div>VEGA</div> <div>COUNTY</div> <div>MESA</div> <div>STATE</div> <div>COLORADO</div>		<div>FILE NO:</div> <div></div> <div>API NO:</div> <div>05-077-10382-0000</div>
	<div>LOCATION:</div> <div>SEE REMARKS</div> <div>SEC 24 TWP 9S RGE 94W</div>	<div>ELEVATIONS:</div> <div>KB 7236 FT</div> <div>DF</div> <div>GL 7212 FT</div>	<div>DATE</div> <div>04-MAY-2018</div>