

Nichols 0994-24-11W  
Mesa County, CO  
Q180238 & RM-180208  
Design #2

Company Name: Laramie Energy, LLC  
Nichols 0994-24-11W  
Mesa County, CO  
Rig: H&P #290  
Created By: Will Jircik  
Date: 3/16/2018

PROJECT DETAILS: Mesa County, CO  
Geodetic System: US State Plane 1983  
Datum: North American Datum 1983  
Ellipsoid: GRS 1980  
Zone: Colorado Central Zone  
System Datum: Mean Sea Level

T

M

Azimuths to True North

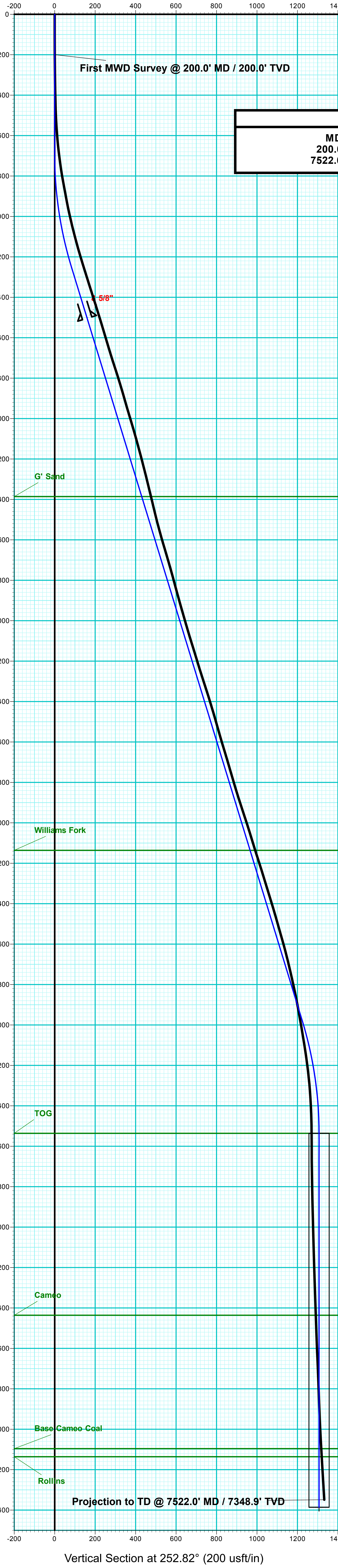
Magnetic North: 9.45°

Strength: 51323.7snT

Dip Angle: 65.40°

Date: 2/13/2018

Model: USER DEFINED



FORMATION TOP DETAILS			
TVDPath	MDPath	Formation	
2386.0	2446.2	G' Sand	
4136.0	4276.3	Williams Fork	
5536.0	5723.1	TOG	
6436.0	6523.1	Cameo	
7096.0	7283.1	Base Cameo Coal	
7136.0	7323.1	Rollins	

ANNOTATIONS							
MD	Inc	Azi	TVD	+N/-S	+E/-W	VSecDeparture	Annotation
200.0	1.60	331.20	200.0	2.4	-1.3	0.6	2.8
7522.0	3.56	270.40	7348.9	-394.5	-1272.9	1332.7	1351.1
First MWD Survey @ 200.0' MD / 200.0' TVD Projection to TD @ 7522.0' MD / 7348.9' TVD							

DESIGN TARGET DETAILS								
Name	TVD	+N/-S	+E/-W	Northing	Easting	Latitude	Longitude	Shape
PBHL - Nichols 0994-24-11W	7386.0	-386.0	-1248.6	1528927.88	2338869.40	39.262309	-107.835274	Circle (Radius: 50.0)

DESIGN #2 ANNOTATIONS									
MD	Inc	Azi	TVD	+N/-S	+E/-W	VSect	Departure	Annotation	
694.0	0.00	0.00	694.0	0.0	0.0	0.0	0.0	KOP (Build 3° / 100')	
1261.2	17.02	252.82	1252.9	-24.7	-79.9	83.6	83.6	EOB @ 17.02° Inc. / 252.82° Azm	
5155.9	17.02	252.82	4977.1	-361.3	-1168.8	1223.3	1223.3	Drop 3° / 100'	
5723.1	0.00	0.00	5536.0	-386.0	-1248.6	1306.9	1306.9	EOD @ Vertical	
7573.1	0.00	0.00	7386.0	-386.0	-1248.6	1306.9	1306.9	TD @ 7573.1' MD / 7386.0' TVD	

WELL DETAILS: Nichols 0994-24-11W					
+N/-S	+E/-W	Northing	Ground Level: Easting	7212.0 Latitude	Longitude
0.0	0.0	1529281.74	2340127.53	39.263369	-107.830864

