



BOREHOLE PROFILE

FILE NO: 133758		COMPANY LARAMIE ENERGY II LLC	
API NO: 05077103970000		WELL NICHOLS 0994-24-11E	
Ver. 4.10		FIELD VEGA	
H&P 290		COUNTY MESA	
LOCATION: SHL 2265' FNL 2795' FWL BHL 2523' FNL 1444' FEL		STATE COLORADO	
SEC 24 TWP 9S RGE 94W		OTHER SERVICES NONE	
PERMANENT DATUM LOG MEASURED FROM DRILL. MEAS. FROM		ELEVATIONS: KB 7236 FT DF 7212 FT GL 7212 FT	
GL ELEVATION 7212 FT KB 24 FT ABOVE P.D. KB			
DATE	09-Mar-2018		
RUN	1	TRIP	1
SERVICE ORDER	US133758J		
DEPTH DRILLER	7673 FT		
DEPTH LOGGER	DID NOT REACH TD		
BOTTOM LOGGED INTERVAL	4530 FT		
TOP LOGGED INTERVAL	0 FT		
CASING DRILLER	8.625 IN @ 1566 FT		
CASING LOGGER	1566 FT @		
BIT SIZE	7.875 IN		
TYPE OF FLUID IN HOLE	WBM		
DENSITY	10.1 LB/G	48 CP	
PH	8.8	6.6 C3	
SOURCE OF SAMPLE	TOOL MEASURED		
RM AT MEAS. TEMP.	1 OHMM	@ 97.3 DEGF	@
RMF AT MEAS. TEMP.	0.75 OHMM	@ 97.3 DEGF	@
RMG AT MEAS. TEMP.	1.25 OHMM	@ 97.3 DEGF	@
SOURCE OF RMF	CALCULATED	CALCULATED	
RM AT BHT	0.762 OHMM	@ 136.8 DEGF	@
TIME SINCE CIRCULATION	4 HOURS		
MAX. RECORDED TEMP.	136.8 DEGF		
EQUIP. NO.	4291	LOCATION	GRAND JCT
RECORDED BY	W. QUIGLEY		
WITNESSED BY	MR. ROGER FOSTER		

IN MAKING INTERPRETATIONS OF LOGS OUR EMPLOYEES WILL GIVE THE CUSTOMER THE BENEFIT OF THEIR BEST JUDGEMENT. BUT SINCE ALL INTERPRETATIONS ARE OPINIONS BASED ON INFERENCES FROM ELECTRICAL OR OTHER MEASUREMENTS, WE CANNOT, AND WE DO NOT GUARANTEE THE ACCURACY OR CORRECTNESS OF ANY INTERPRETATION. WE SHALL NOT BE LIABLE OR RESPONSIBLE FOR ANY LOSS, COST, DAMAGES, OR EXPENSES WHATSOEVER INCURRED OR SUSTAINED BY THE CUSTOMER RESULTING FROM ANY INTERPRETATION MADE BY ANY OF OUR EMPLOYEES.

REMARKS

RUN 1 TRIP 1: FIRST TRIP: REACHED 2395 FT AND BRIDGED. LOGGED OUT AND WIPER TRIP TO 5000'
 SECOND TRIP: REACHED 4533 FT. POOH TO REMOVE BOWSPRING AND ADD HOLEFINDER
 THIRD TRIP: NO BOWSPRING. HOLEFINDER ADDED - REACHED 2286 FT
 FOURTH TRIP: NO BOWSPRING, NO HOLEFINDER - REACHED 4530 FT

LOGS WERE RECORDED 2ND TRIP WITH BOWSPRING

GR OR NEUTRON JIG NOT AVAILABLE FOR VERIFICATIONS

THANK YOU FOR CHOOSING BAKER HUGHES, A GE COMPANY
 CREW: ROBERT ZUNIGA, AUSTIN WAGGONER, ALI SHAHNOOSHI

EQUIPMENT DATA				
RUN	TRIP	TOOL	SERIES NO.	SERIAL NO.
1	1	TTRM	3981XA	10045153
1	1	TELEM	3514XA	10223701
1	1	GAMMA RAY	1329XA	363173
				FREE
				FREE
				FREE

1	1	NEUTRON	2446XA	10342170	DECENTRALIZED
1	1	DENSITY	2234XA	10231795	CALIPER DEVICE
1	1	KNUCKLE	3939XA	186262	FREE
1	1	HDIL EA	1515EA	177896	FREE
1	1	HDIL	1515MA	179553	FREE

BOREHOLE PROFILE

ECLIPS 7.0i ECLIPS General Release Rel 7.0i Thu Jun 08 20:36:10 CDT 2017
Patches: 2

Plotted: Sat Mar 10 16:26:51 2018

PARAMETER AND FILTER SUMMARY REPORT

FILE: /dat1a/LARAMIE_NICHOLS_0994-24-11E/p777q02.prm

LOGGING MODE: DEPTH DIRECTION: UP

TOP DEPTH: 1435.000 ft BOTTOM DEPTH: 2398.000 ft

SYMMETRIC FILTER

MEASUREMENT TYPE	PARAMETER	VALUE	UNITS	INTERVAL (ft)	
Y AXIS CALIPER	FILTER ()	medium (1)		TOP	BOTTOM
TENSION	FILTER ()	medium (1)		"	"
GR	FILTER ()	medium (1)		"	"
CALIPER	FILTER ()	medium (1)		"	"
	FILTER (.h)	medium (1)		"	"
	FILTER (.i)	medium (1)		"	"

BOREHOLE & CEMENT

MEASUREMENT TYPE	PARAMETER	VALUE	UNITS	INTERVAL (ft)	
CASING - BOREHOLE & CEMENT VOLUME	CASING O.D.	4.500	in	TOP	BOTTOM
BIT SIZE	BIT SIZE	7.875	in	"	"

PARAMETER AND FILTER SUMMARY REPORT

FILE: /dat1a/LARAMIE_NICHOLS_0994-24-11E/p777q04.prm

LOGGING MODE: DEPTH DIRECTION: UP

TOP DEPTH: 2217.250 ft BOTTOM DEPTH: 4531.906 ft

SYMMETRIC FILTER

MEASUREMENT TYPE	PARAMETER	VALUE	UNITS	INTERVAL (ft)	
Y AXIS CALIPER	FILTER ()	medium (1)		TOP	BOTTOM
TENSION	FILTER ()	light (2)		"	"
GR	FILTER ()	medium (1)		"	"
CALIPER	FILTER ()	medium (1)		"	"
	FILTER (.h)	medium (1)		"	"
	FILTER (.i)	medium (1)		"	"

BOREHOLE & CEMENT

MEASUREMENT TYPE	PARAMETER	VALUE	UNITS	INTERVAL (ft)	
CASING - BOREHOLE & CEMENT VOLUME	CASING O.D.	4.500	in	TOP	BOTTOM
BIT SIZE	BIT SIZE	7.875	in	"	"

CURVE DESCRIPTION REPORT

CURVE NAME

CREATION DATE

CURVE DESCRIPTION

F1:BIT

N/A

BIT SIZE

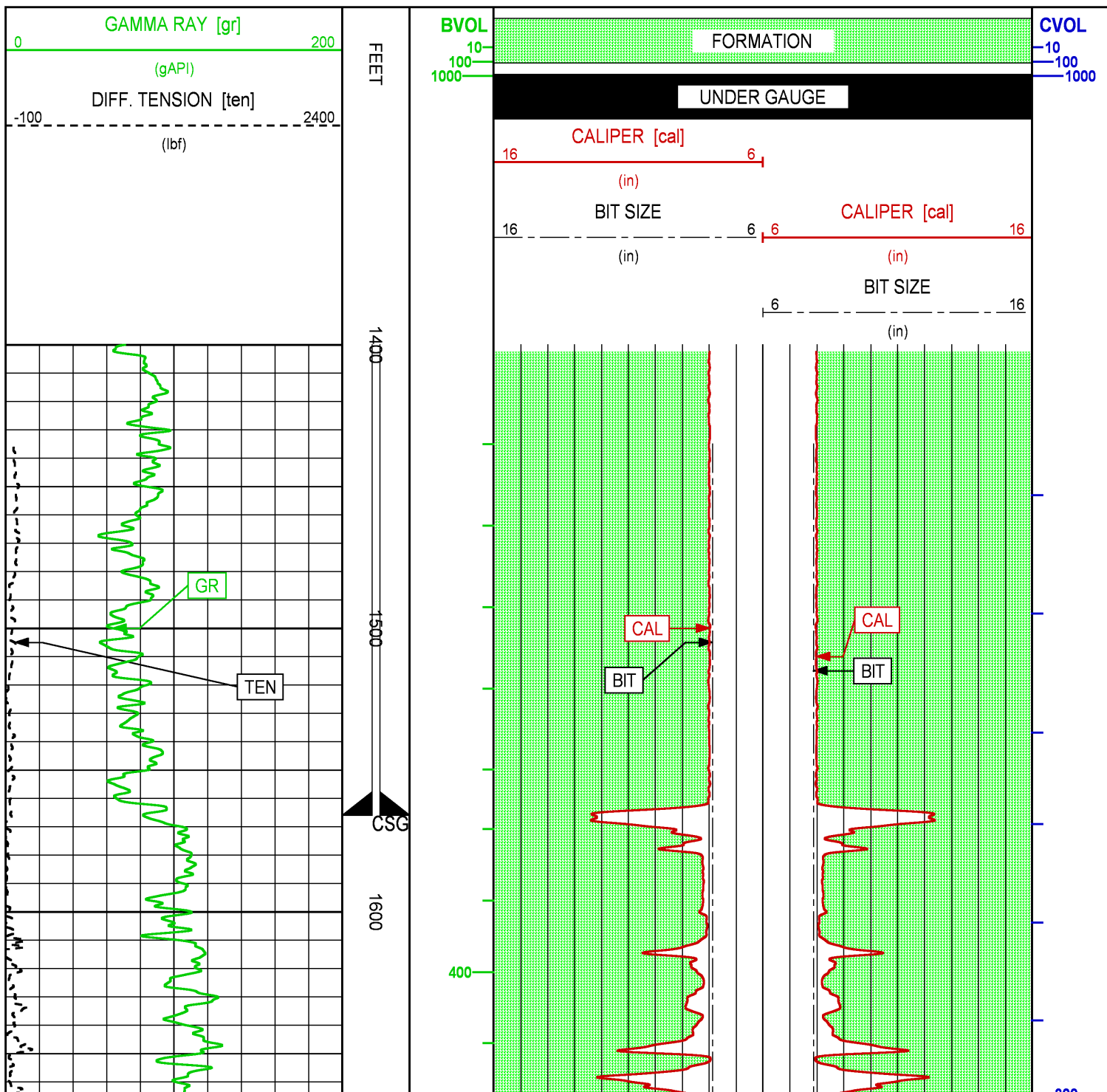
F1:BVOL	N/A	BOREHOLE VOLUME
F1:CAL	N/A	CALIPER
F1:CVOL	N/A	CEMENT VOLUME
F1:GR	N/A	GAMMA RAY
F1:TEN	N/A	DIFFERENTIAL TENSION

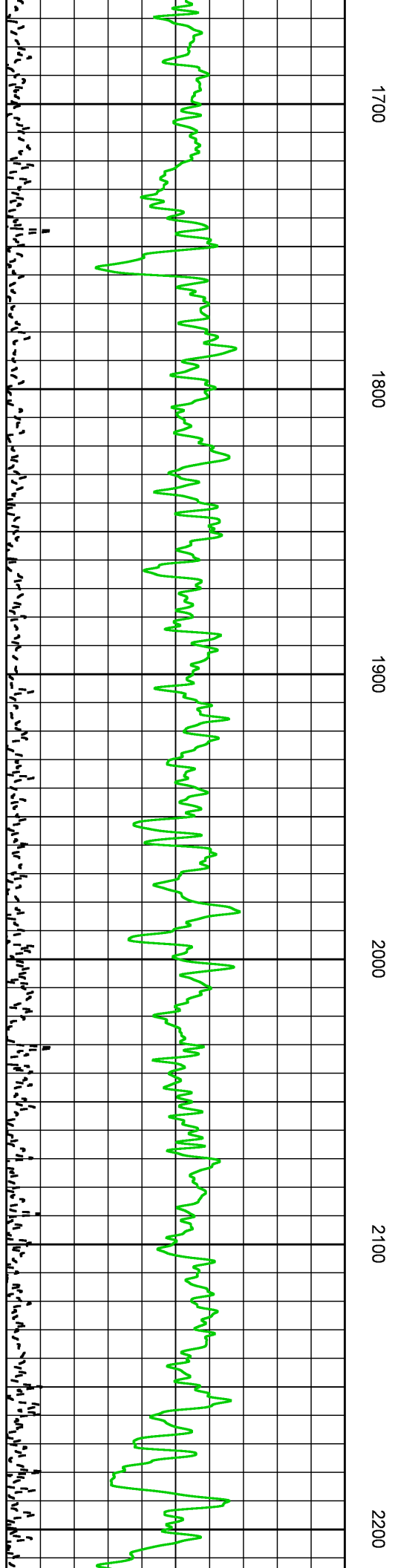
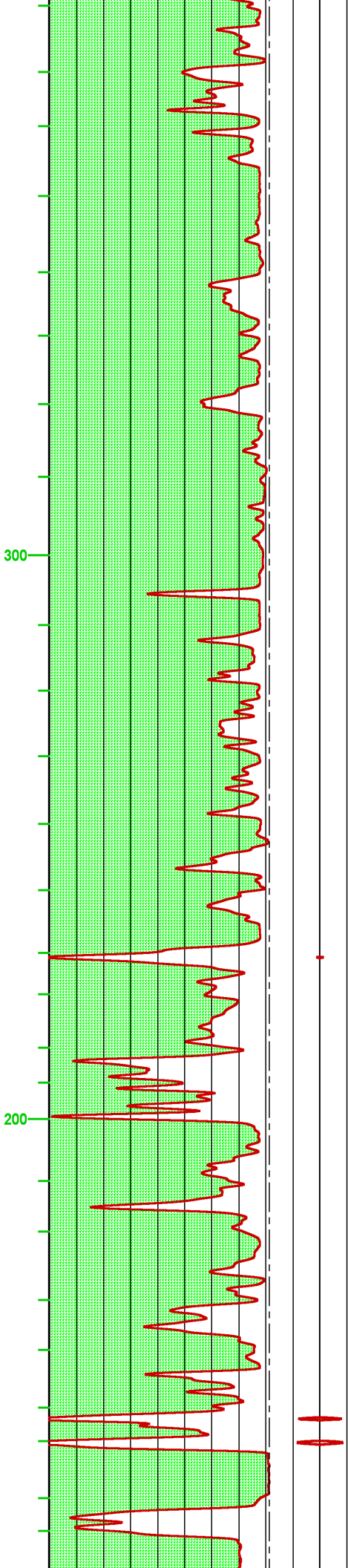
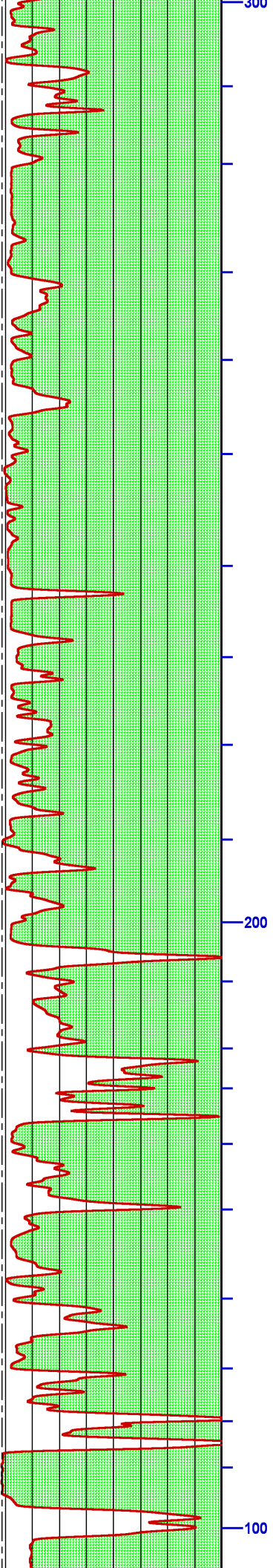
CURVE MEASURE POINT OFFSET

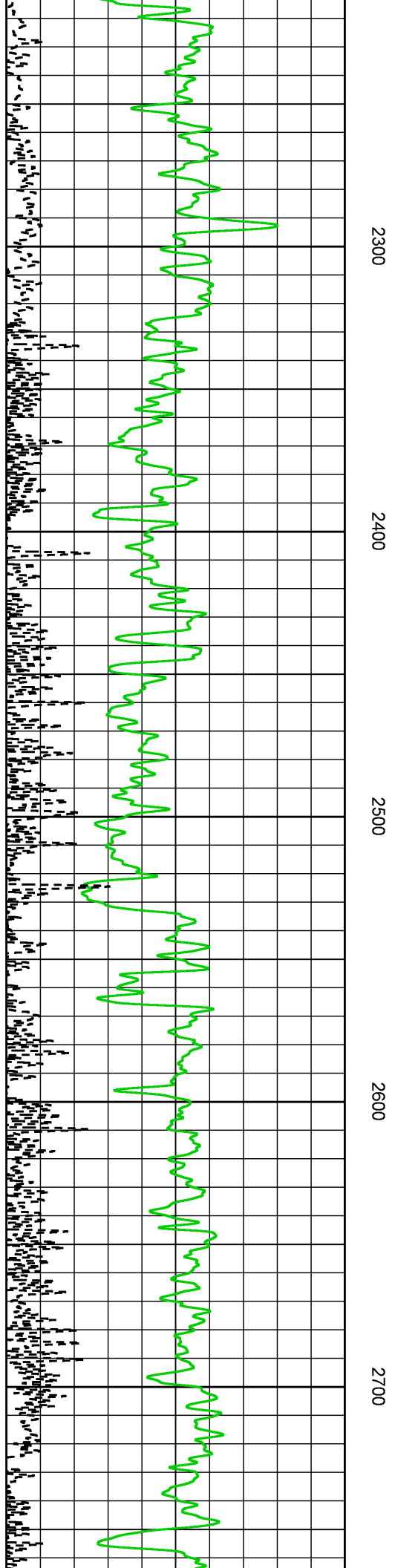
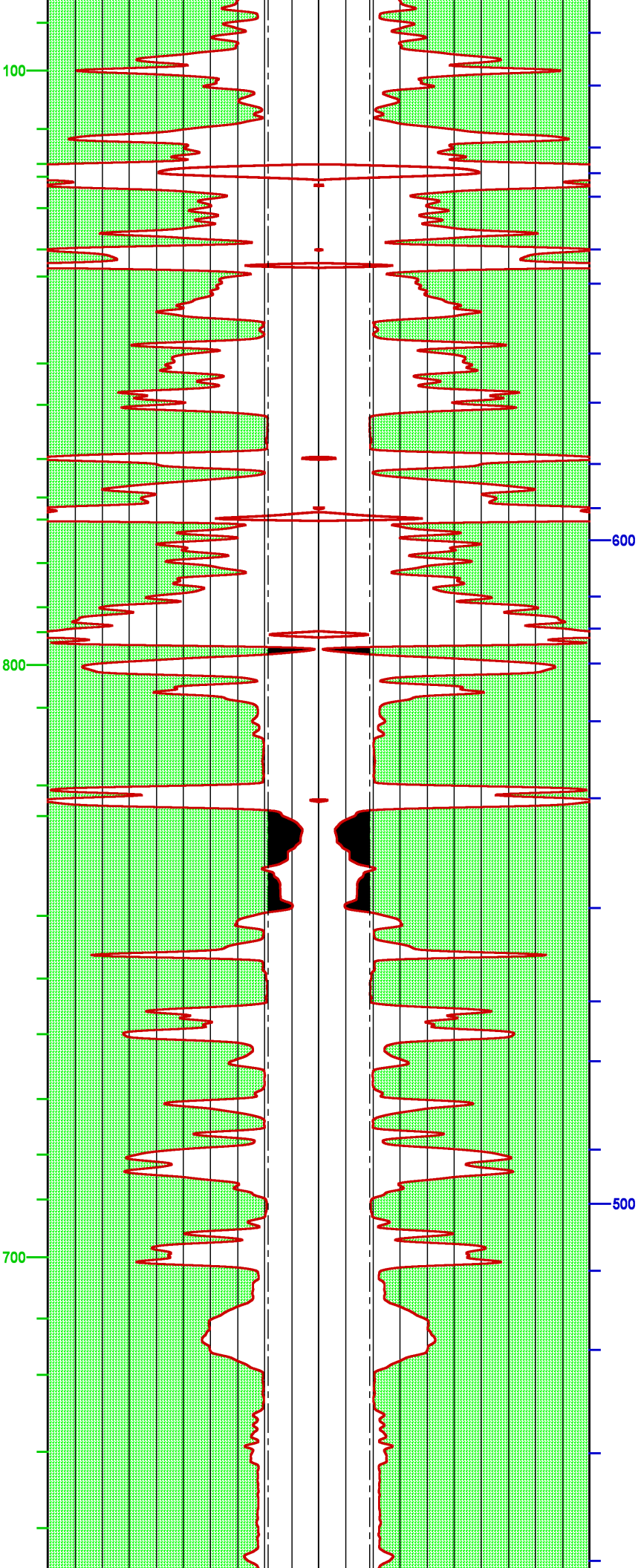
CURVE	OFFSET (ft)	CURVE	OFFSET (ft)	CURVE	OFFSET (ft)	CURVE	OFFSET (ft)
BIT	0.00	CAL	-35.00	GR	-52.25	TEN	0.00

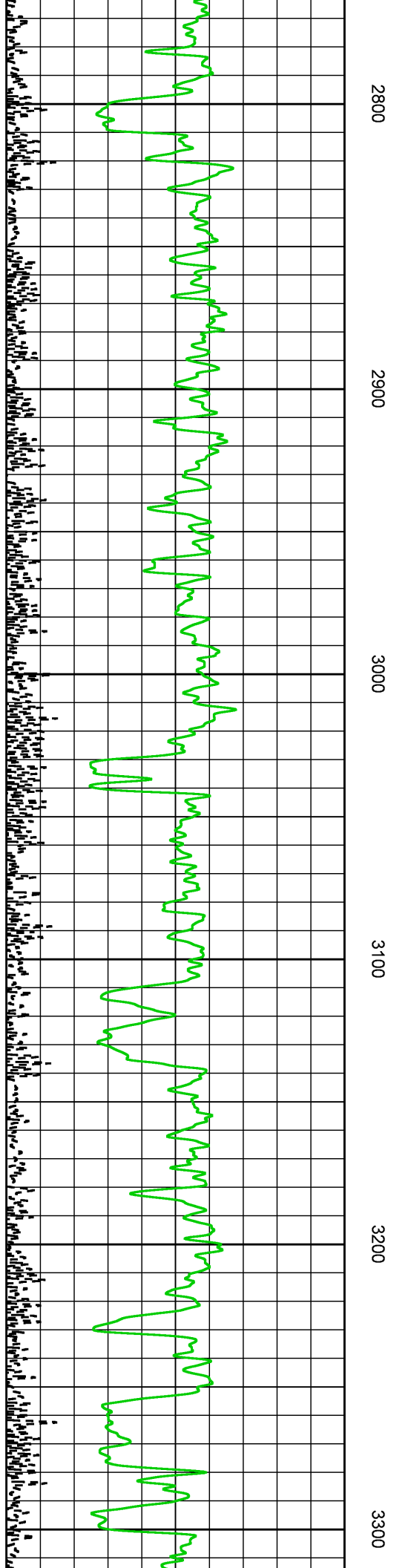
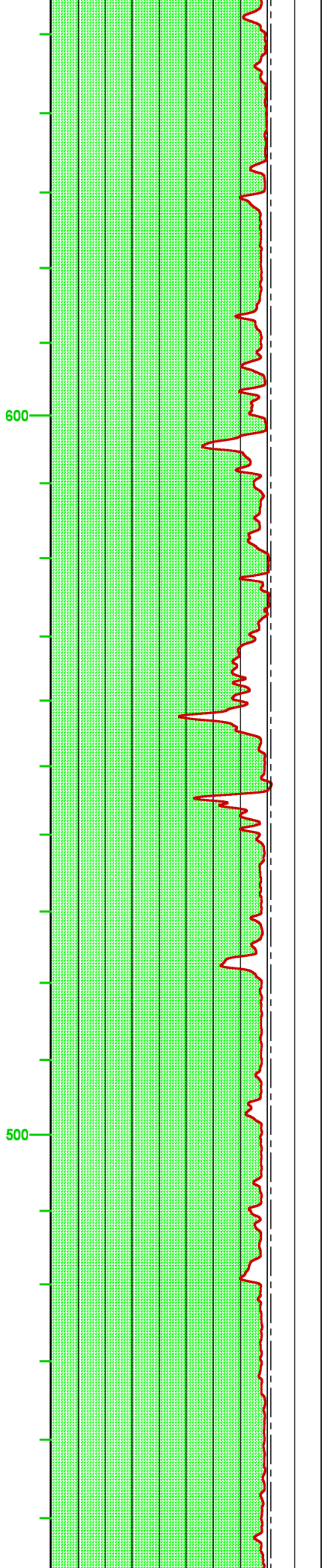
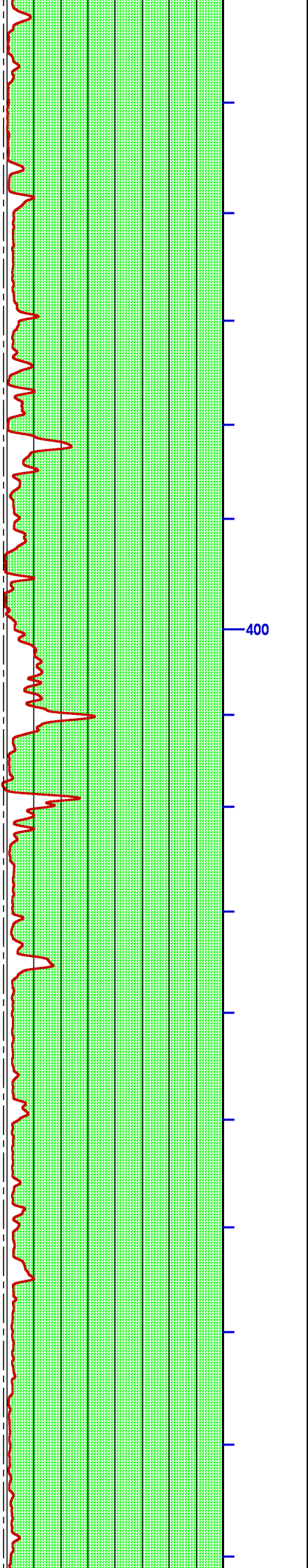
Presentation : SysA:/dat1a/LARAMIE_NICHOLS_0994-24-11E/BHP.fvpdf [2"/100' Scale]
Plot Interval : 1400 - 4537.75 Feet

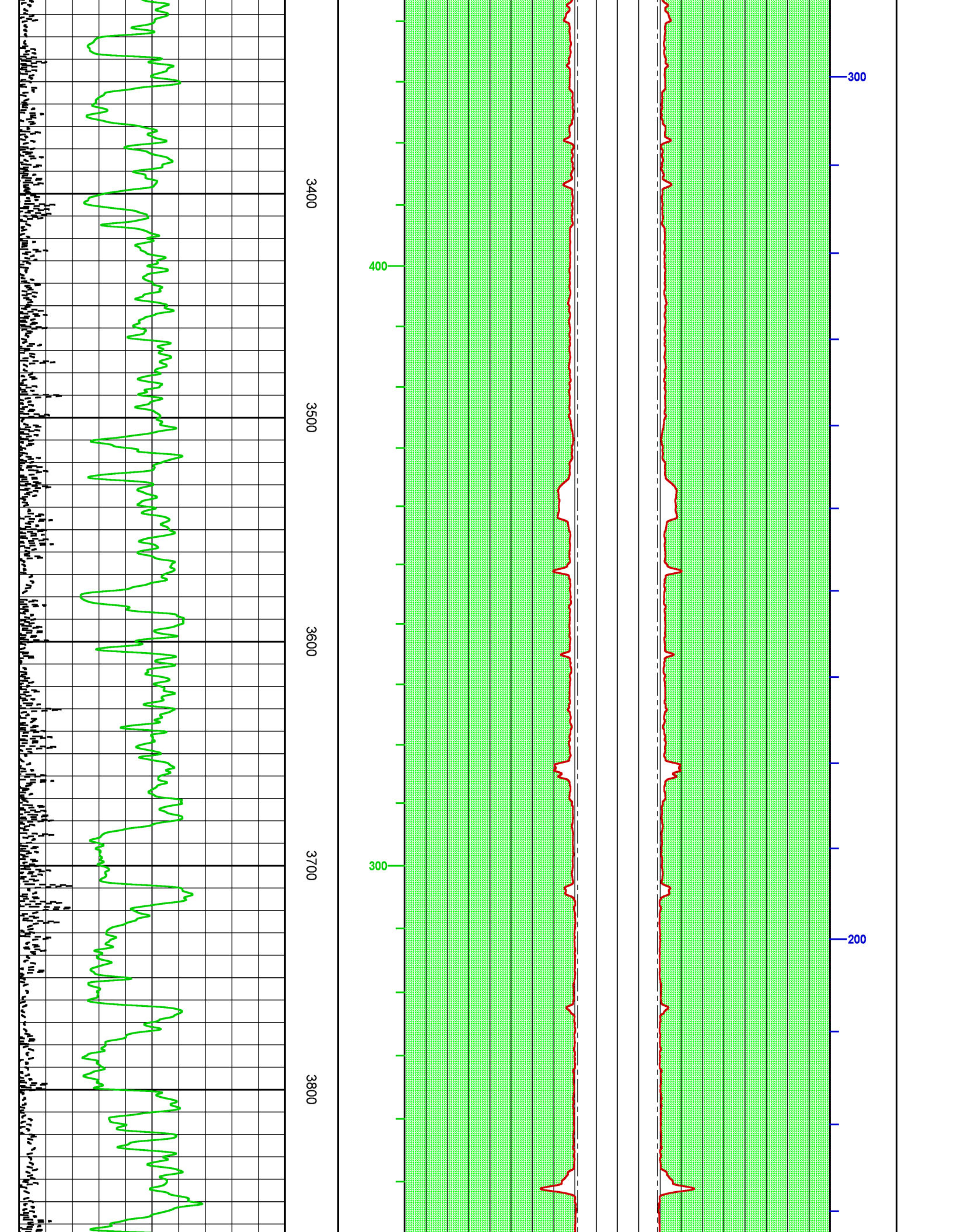
Data File 1 : F1 : SysA:/dat1a/LARAMIE_NICHOLS_0994-24-11E/p777qMAINSPL.xtf
Created On : N/A
Company : LARAMIE ENERGY II LLC
Well : NICHOLS 0994-24-11E
Field : VEGA
File Interval : -16.5 - 4537.75 Feet
OCT : p777q

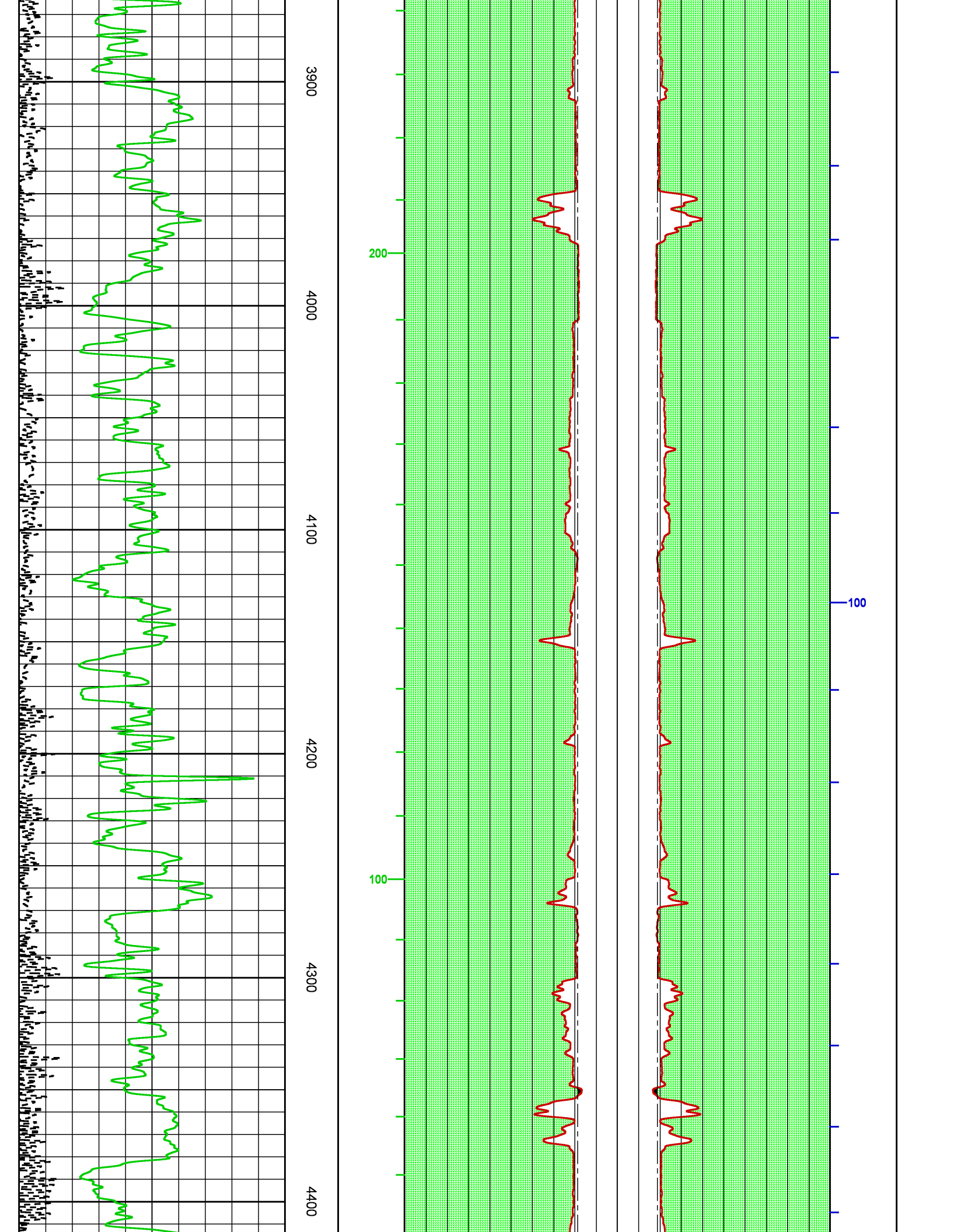


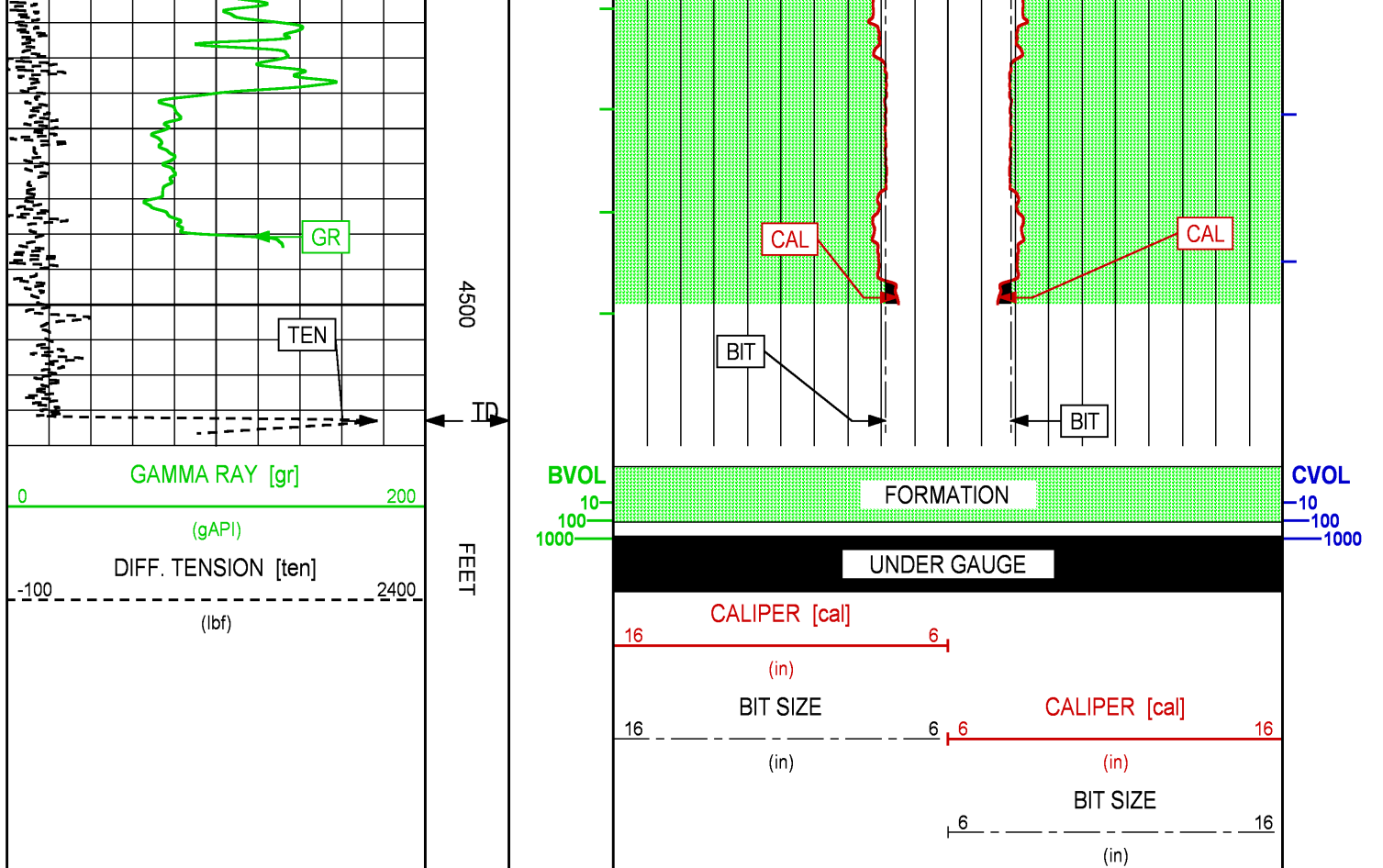














 	COMPANY <u>LARAMIE ENERGY II LLC</u> WELL <u>NICHOLS 0994-24-11E</u> FIELD <u>VEGA</u> COUNTY <u>MESA</u> STATE <u>COLORADO</u>	FILE NO: <u>133758</u> API NO: <u>05077103970000</u>	
	LOCATION: SHL 2265' FNL 2795' FWL BHL 2523' FNL 1444' FEL	ELEVATIONS: KB 7236 FT DF GL 7212 FT	H&P 290
	SEC <u>24</u> TWP <u>9S</u> RGE <u>94W</u>	DATE <u>09-Mar-2018</u>	