



BOREHOLE PROFILE

FILE NO: 133758	COMPANY LARAMIE ENERGY II LLC
API NO: 05077103970000	WELL NICHOLS 0994-24-11E
	FIELD VEGA
	COUNTY MESA STATE COLORADO

Ver. 4.10 H&P 290	LOCATION: SHL 2265' FNL 2795' FWL BHL 2523' FNL 1444' FEL SEC 24 TWP 9S RGE 94W	OTHER SERVICES NONE
----------------------	--	------------------------

PERMANENT DATUM LOG MEASURED FROM DRILL. MEAS. FROM	GL KB KB	ELEVATION 24 FT ABOVE P.D. 7212 FT	ELEVATIONS: KB 7236 FT DF GL 7212 FT
---	----------------	---	---

DATE	09-Mar-2018
RUN	1
SERVICE ORDER	US133758J
DEPTH DRILLER	7673 FT
DEPTH LOGGER	DID NOT REACH TD
BOTTOM LOGGED INTERVAL	4530 FT
TOP LOGGED INTERVAL	0 FT
CASING DRILLER	8.625 IN @ 1566 FT
CASING LOGGER	1566 FT
BIT SIZE	7.875 IN
TYPE OF FLUID IN HOLE	WBM
DENSITY	10.1 LB/G
PH	8.8
SOURCE OF SAMPLE	TOOL MEASURED
RM AT MEAS. TEMP.	1 OHMM @ 97.3 DEGF
RMF AT MEAS. TEMP.	0.75 OHMM @ 97.3 DEGF
RMC AT MEAS. TEMP.	1.25 OHMM @ 97.3 DEGF
SOURCE OF RMF	RMC
RM AT BHT	0.762 OHMM @ 136.8 DEGF
TIME SINCE CIRCULATION	4 HOURS
MAX. RECORDED TEMP.	136.8 DEGF
EQUIP. NO.	4291
RECORDED BY	W. QUIGLEY
WITNESSED BY	MR. ROGER FOSTER

IN MAKING INTERPRETATIONS OF LOGS OUR EMPLOYEES WILL GIVE THE CUSTOMER THE BENEFIT OF THEIR BEST JUDGEMENT. BUT SINCE ALL INTERPRETATIONS ARE OPINIONS BASED ON INFERENCES FROM ELECTRICAL OR OTHER MEASUREMENTS, WE CANNOT, AND WE DO NOT GUARANTEE THE ACCURACY OR CORRECTNESS OF ANY INTERPRETATION. WE SHALL NOT BE LIABLE OR RESPONSIBLE FOR ANY LOSS, COST, DAMAGES, OR EXPENSES WHATSOEVER INCURRED OR SUSTAINED BY THE CUSTOMER RESULTING FROM ANY INTERPRETATION MADE BY ANY OF OUR EMPLOYEES.

REMARKS

RUN 1 TRIP 1: FIRST TRIP: REACHED 2395 FT AND BRIDGED. LOGGED OUT AND WIPER TRIP TO 5000'
SECOND TRIP: REACHED 4533 FT. POOH TO REMOVE BOWSPRING AND ADD HOLEFINDER
THIRD TRIP: NO BOWSPRING. HOLEFINDER ADDED - REACHED 2286 FT
FOURTH TRIP: NO BOWSPRING, NO HOLEFINDER - REACHED 4530 FT

LOGS WERE RECORDED 2ND TRIP WITH BOWSPRING

GR OR NEUTRON JIG NOT AVAILABLE FOR VERIFICATIONS

THANK YOU FOR CHOOSING BAKER HUGHES, A GE COMPANY
CREW: ROBERT ZUNIGA, AUSTIN WAGGONER, ALI SHAHNOOSHI

EQUIPMENT DATA

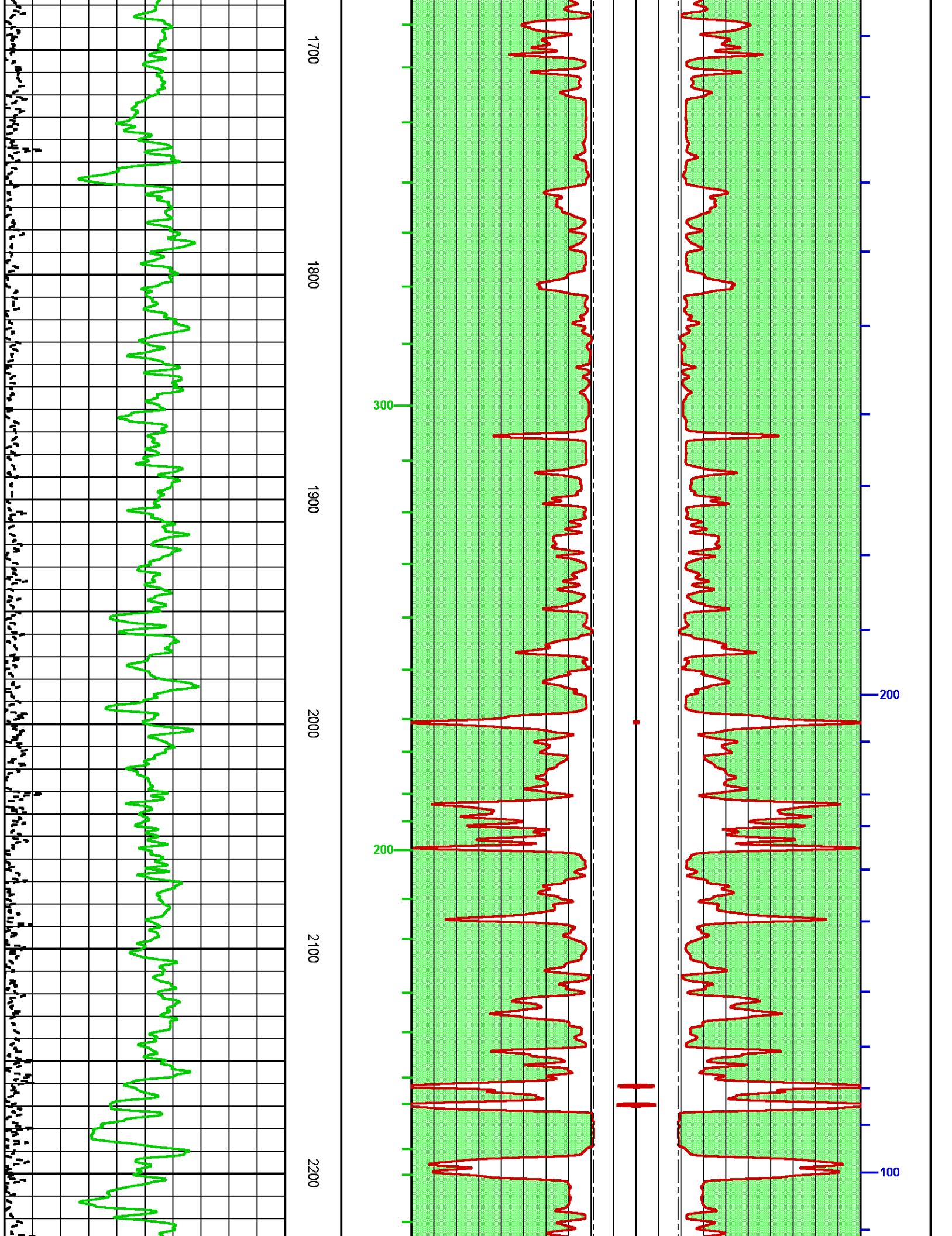
RUN	TRIP	TOOL	SERIES NO.	SERIAL NO.	POSITION
1	1	TTRM	3981XA	10045153	FREE
1	1	TELEM	3514XA	10223701	FREE
1	1	GAMMA RAY	1329XA	363173	FREE
1	1	NEUTRON	2446XA	10342170	DECENTRALIZED
1	1	DENSITY	2234XA	10231795	CALIPER DEVICE

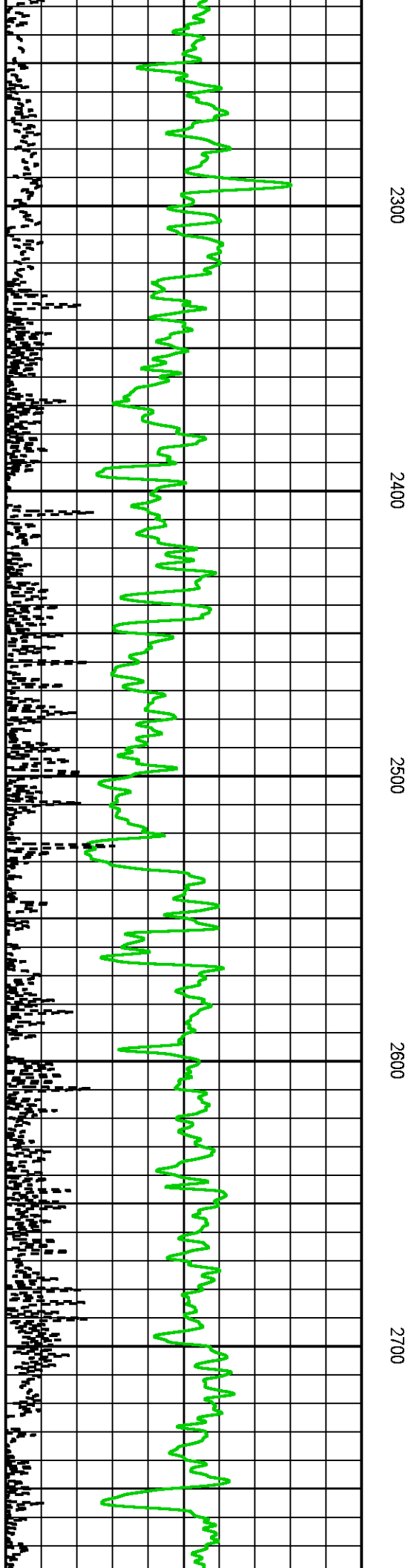
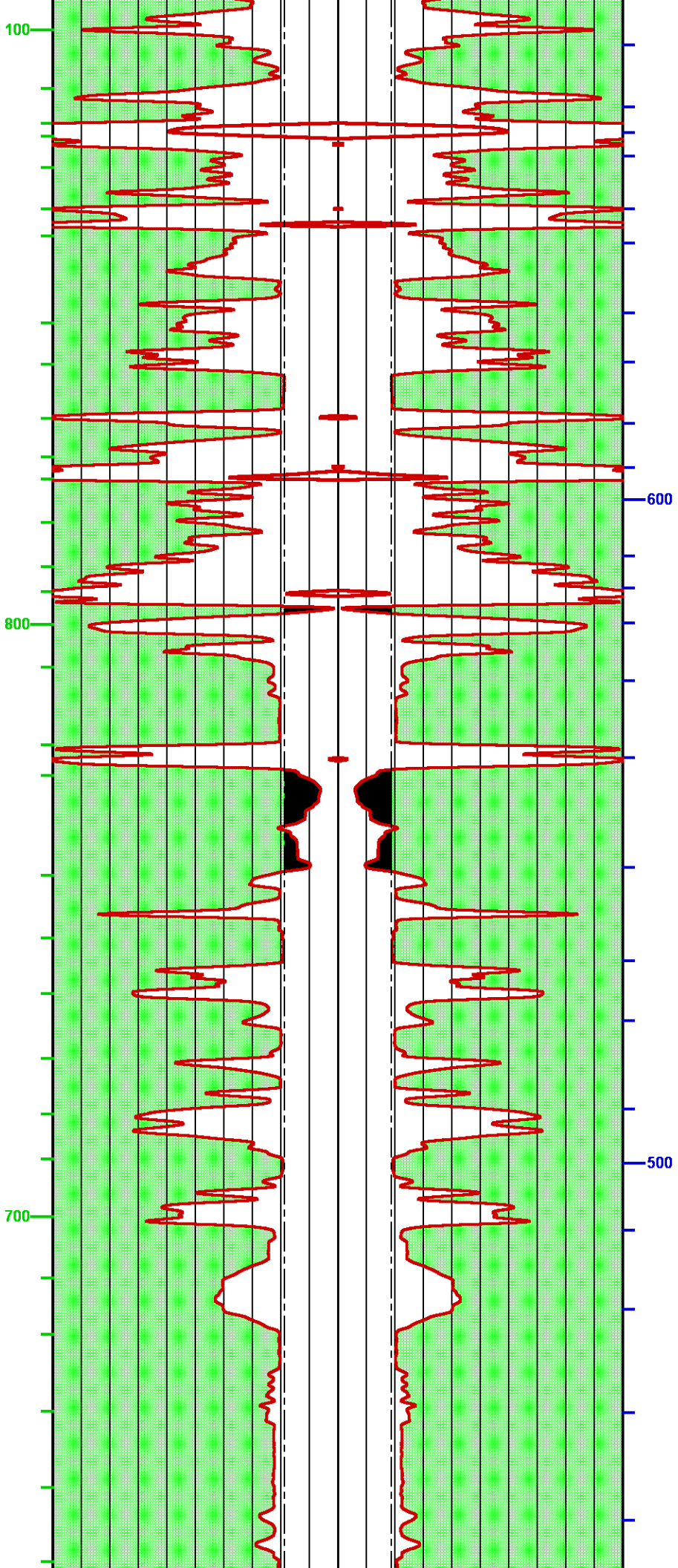
BOREHOLE PROFILE

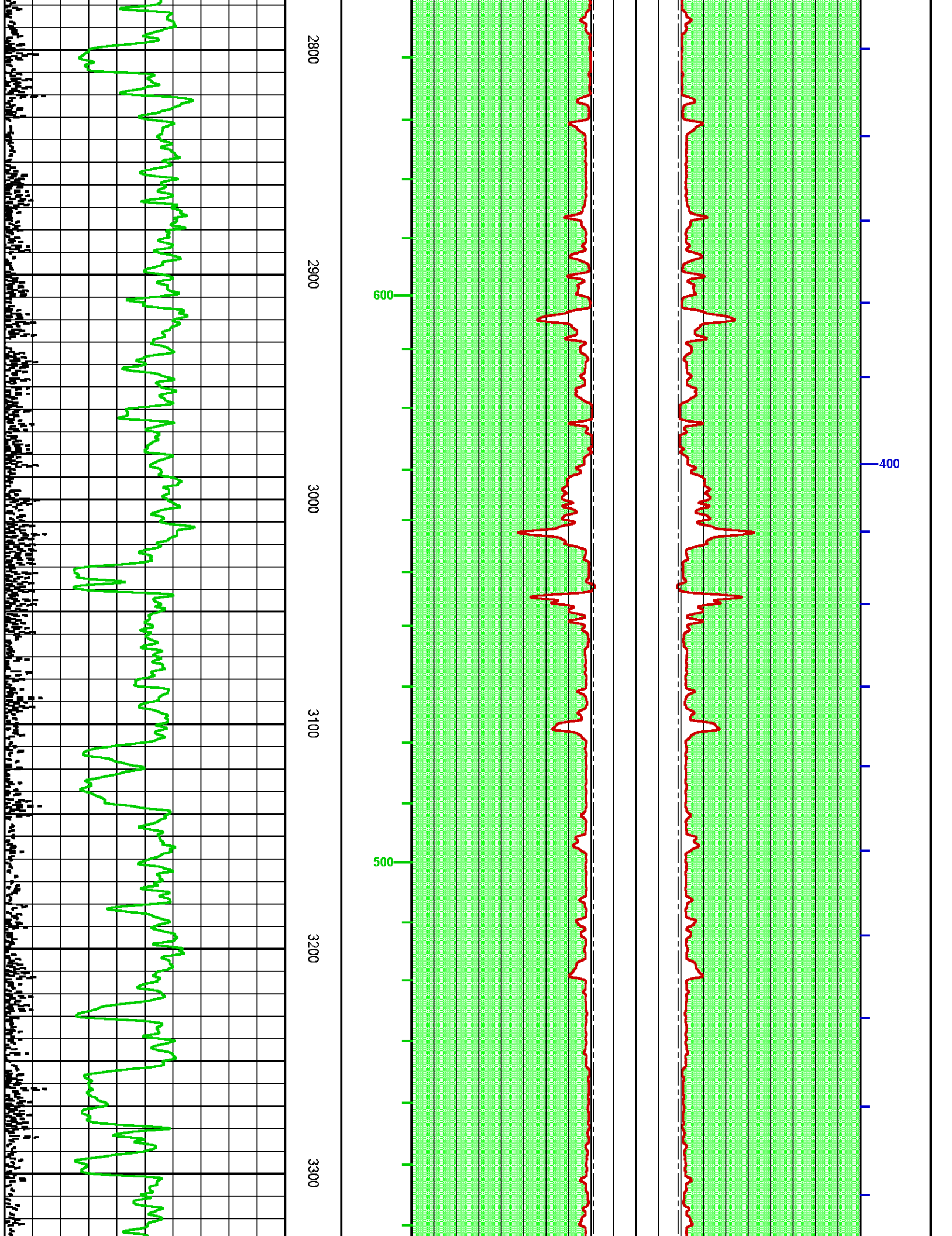
Plotted: Sat Mar 10 16:26:51 2018

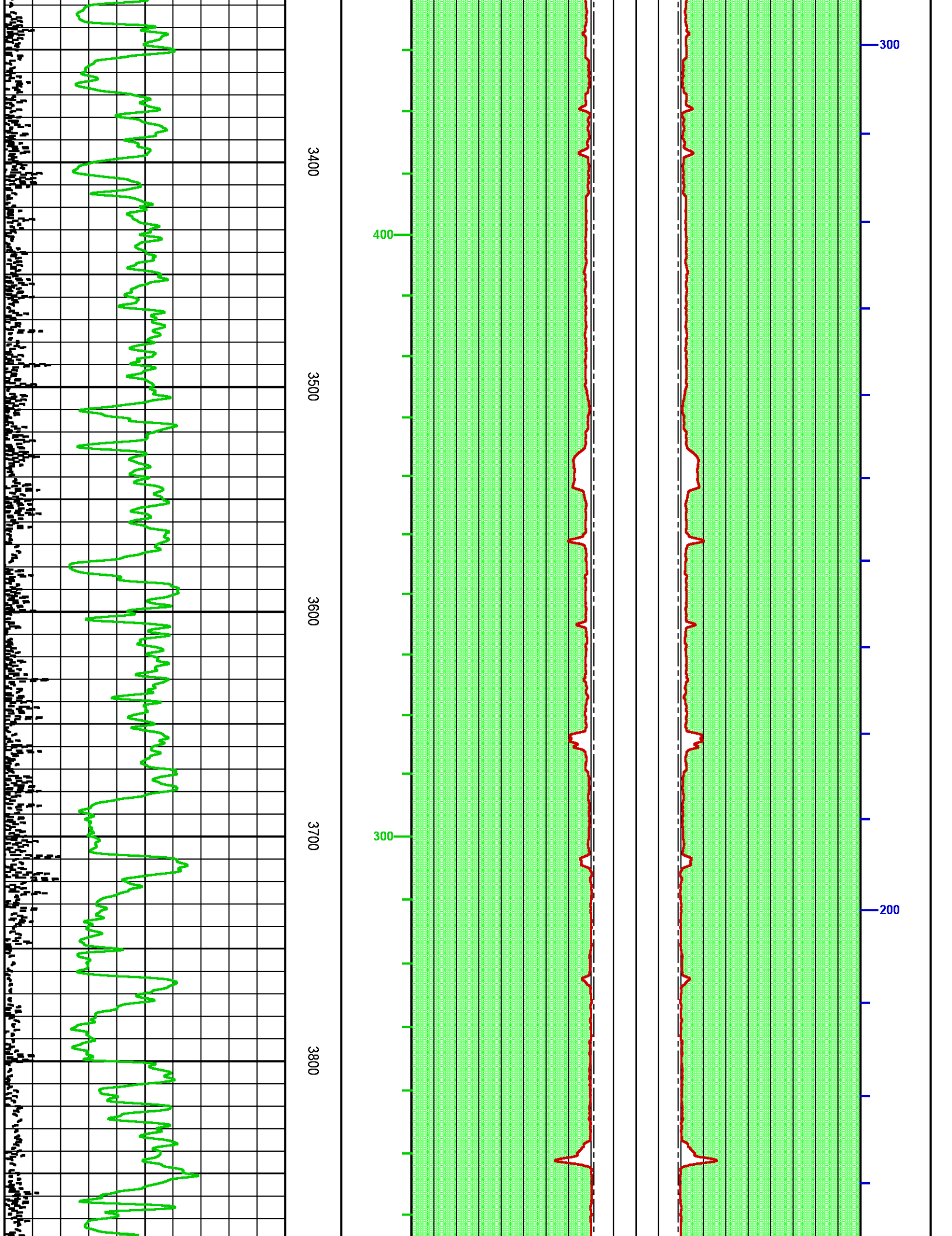
PARAMETER AND FILTER SUMMARY REPORT					
FILE:	/dat1a/LARAMIE_NICHOLS_0994-24-11E/p777q04.prm				
LOGGING MODE:	DEPTH	DIRECTION:	UP		
TOP DEPTH:	2217.250 ft	BOTTOM DEPTH:	4531.906 ft		
SYMMETRIC FILTER					
MEASUREMENT TYPE	PARAMETER	VALUE	UNITS	INTERVAL (ft)	
Y AXIS CALIPER	FILTER ()	medium (1)		TOP	BOTTOM
TENSION	FILTER ()	light (2)		"	"
GR	FILTER ()	medium (1)		"	"
CALIPER	FILTER ()	medium (1)		"	"
	FILTER (.h)	medium (1)		"	"
	FILTER (.i)	medium (1)		"	"
BOREHOLE & CEMENT					
MEASUREMENT TYPE	PARAMETER	VALUE	UNITS	INTERVAL (ft)	
CASING - BOREHOLE & CEMENT VOLUME	CASING O.D.	4.500	in	TOP	BOTTOM
BIT SIZE	BIT SIZE	7.875	in	"	"

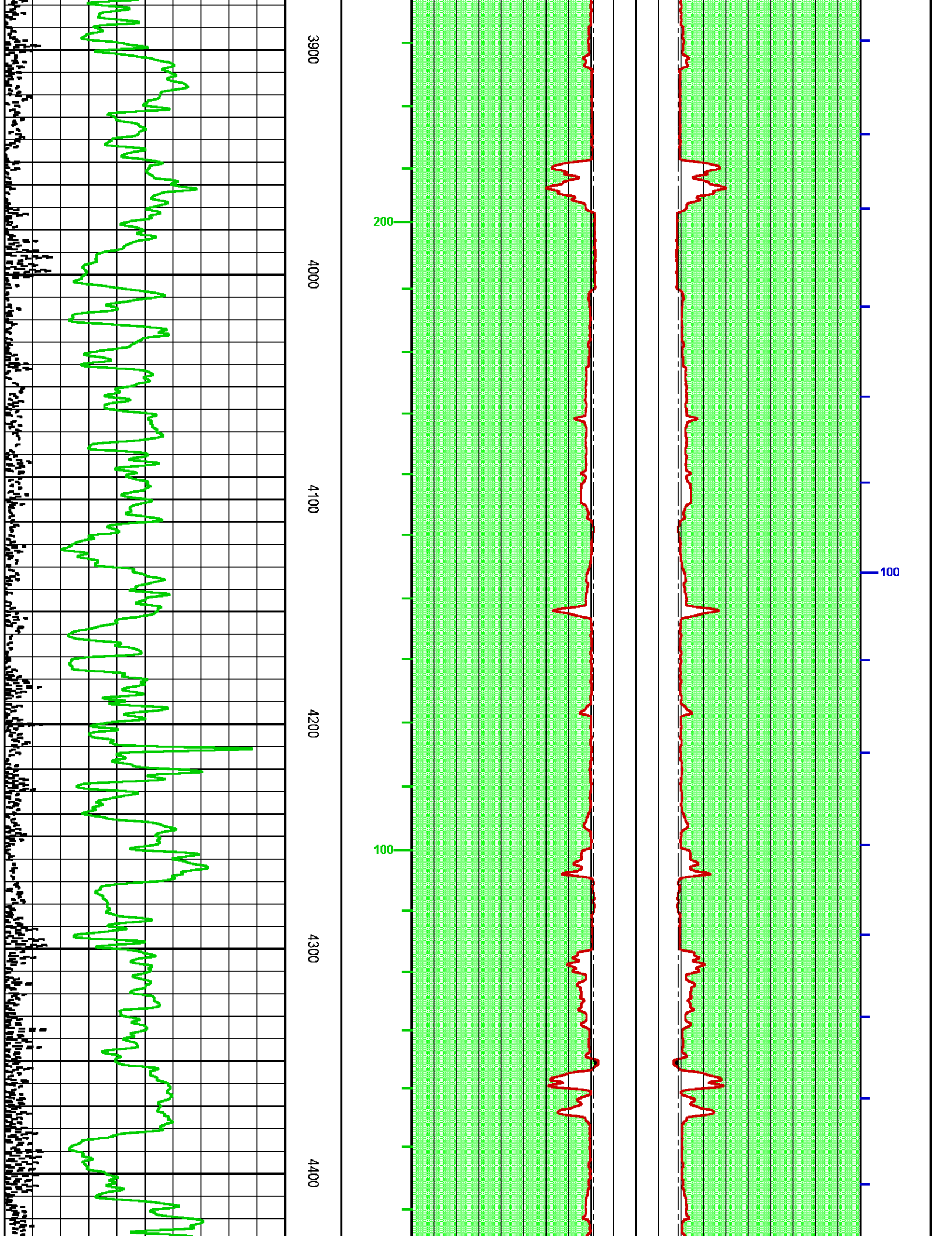
CURVE DESCRIPTION REPORT		
CURVE NAME	CREATION DATE	CURVE DESCRIPTION
F1:BIT	N/A	BIT SIZE
F1:BVOL	N/A	BOREHOLE VOLUME
F1:CAL	N/A	CALIPER

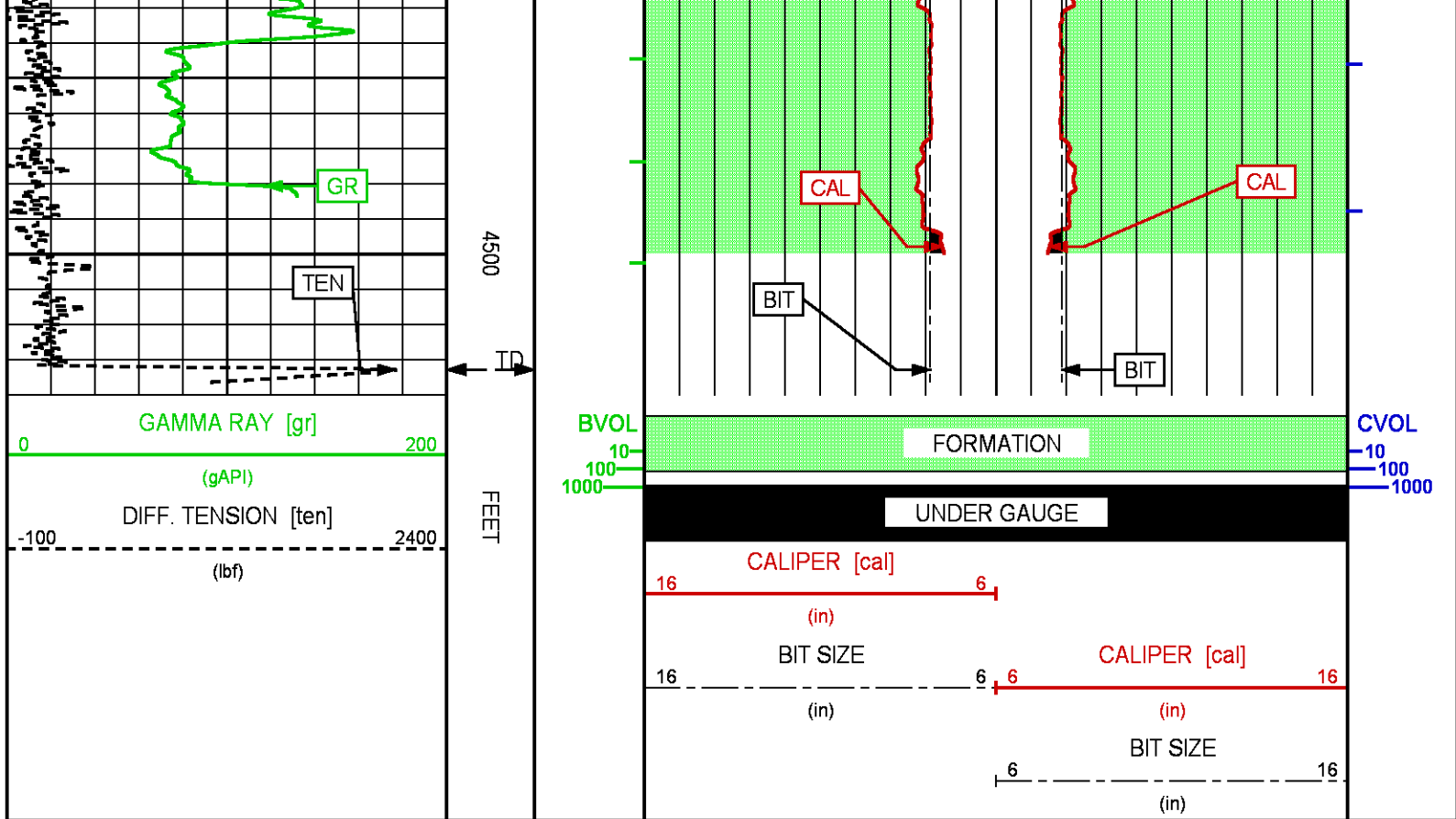












**BAKER
HUGHES**
a GE company



EOLIPS

COMPANY
WELL
FIELD
COUNTY

LARAMIE ENERGY II LLC
NICHOLS 0994-24-11E
VEGA
MESA

STATE **COLORADO**

LOCATION:

SHL 2265' FNL 2795' FWL
BHL 2523' FNL 1444' FEL

SEC 24 TWP 9S RGE 94W

ELEVATIONS:

KB 7236 FT
DF
GL 7212 FT

DATE 09-Mar-2018

FILE NO:

133758

API NO:

05077103970000

H&P 290