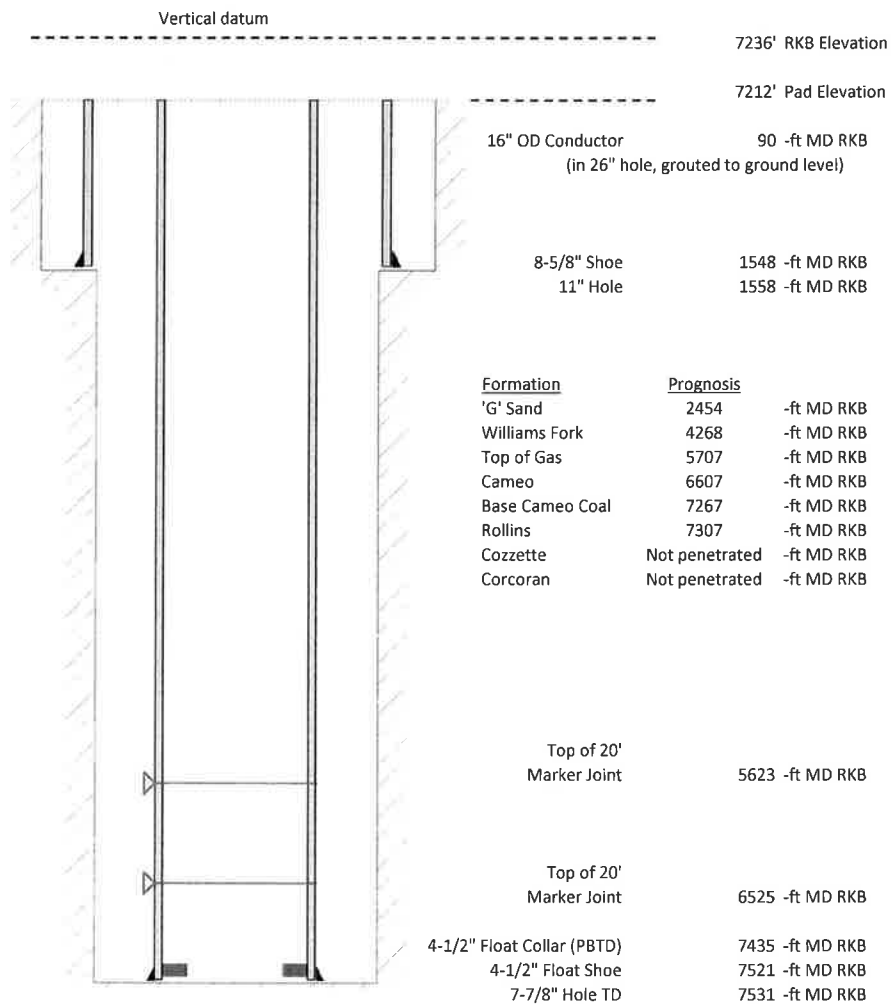


Laramie Energy, LLC
Nichols 0994-24-10W
Slot B-1
H&P 290 (24-ft KB)

API # : 05-077-10395-00
 SENW S24 T9S R94W 6th PM
 Mesa County, CO
 Date of diagram : 2/25/2018



Cementing details

| 8-5/8" 28# Surface Csg | Lead | Tail |
|---------------------------|------|------|
| Density (ppg) | 12 | 12.5 |
| Volume (sx) | 191 | 107 |
| Yield (cf/sx) | 2.52 | 2.22 |
| Top (ft RKB) | 24 | 1030 |
| Bottom (ft RKB) | 1030 | 1548 |
| Returns (full or partial) | Full | Full |

| 4-1/2" 11.6# Prod Csg | Lead | Tail |
|---------------------------|------|------|
| Density (ppg) | 12.7 | 13.5 |
| Volume (sx) | 772 | 381 |
| Yield (cf/sx) | 1.97 | 1.9 |
| Est Top (ft RKB) | 1030 | 5507 |
| Est Bottom (ft RKB) | 5507 | 7521 |
| Returns (full or partial) | Full | Full |

| Displacement |
|--------------|
| 8.3 ppg |
| 115 bbls |

Other Remarks : Surface- 38 bbls cement to surface Production-0 bbls spacer to surface