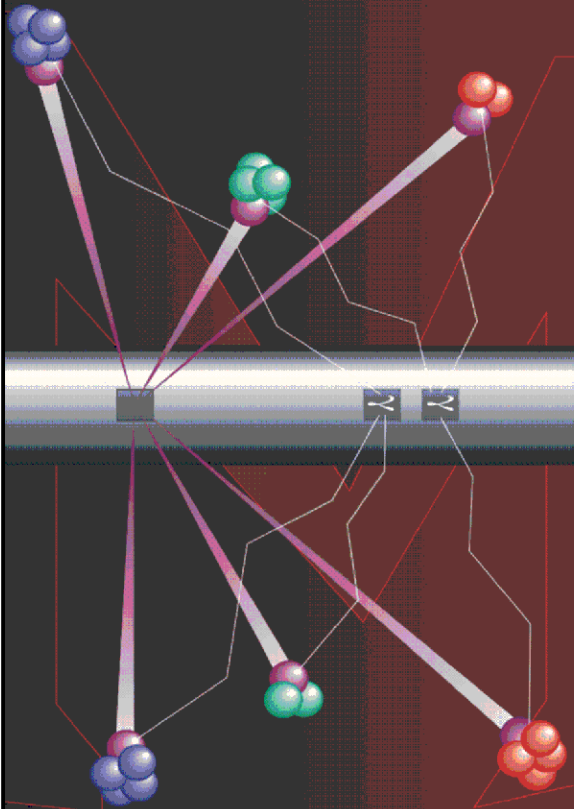


Pulsed Neutron Formation Evaluation



RESERVOIR PERFORMANCE MONITOR NEO Neutron Emulated Openhole

COMPANY LARAMIE ENERGY LLC

WELL NICHOLS 0994-24-10W

FIELD VEGA

COUNTY MESA STATE COLORADO

LOCATION:

SEE REMARKS

SEC 24 TWP 9S RGE 94W

ELEVATIONS:

KB 7236 FT DF GL 7212 FT

DATE 09-MAY-2018 ECC 136065

IN MAKING INTERPRETATIONS OF LOGS OUR EMPLOYEES WILL GIVE THE CUSTOMER THE BENEFIT OF THEIR BEST JUDGEMENT. BUT SINCE ALL INTERPRETATIONS ARE OPINIONS BASED ON INFERENCES FROM ELECTRICAL OR OTHER MEASUREMENTS, WE CANNOT, AND WE DO NOT GUARANTEE THE ACCURACY OR CORRECTNESS OF ANY INTERPRETATION. WE SHALL NOT BE LIABLE OR RESPONSIBLE FOR ANY LOSS, COST, DAMAGES, OR EXPENSES WHATSOEVER INCURRED OR SUSTAINED BY THE CUSTOMER RESULTING FROM ANY INTERPRETATION MADE BY ANY OF OUR EMPLOYEES.

COMPUTATION PARAMETERS

COMPUTATION	LOGS USED: <u>RPM-C</u>		PROGRAM: <u>NEO</u>
	CENTER: <u>HOUSTON</u>	LOG ANALYST: <u>KIMBERLY ELLSWORTH</u>	DATE: <u>049MAY-2018</u>
FIELD DATA	LOCATION: <u>GRAND JUNCTION</u>	ENGINEER: <u>M. BAUKA</u>	DATE: <u>26-APR-2018</u>

FROM	TO								
<u>2002 FT</u>	<u>7393 FT</u>								

REMARKS

LOCATION: SHL: 2256' FNL & 2787' FWL
BHL: 2328' FNL & 1550' FWL

TRAINING WELL:
NICHOLS 24-06W

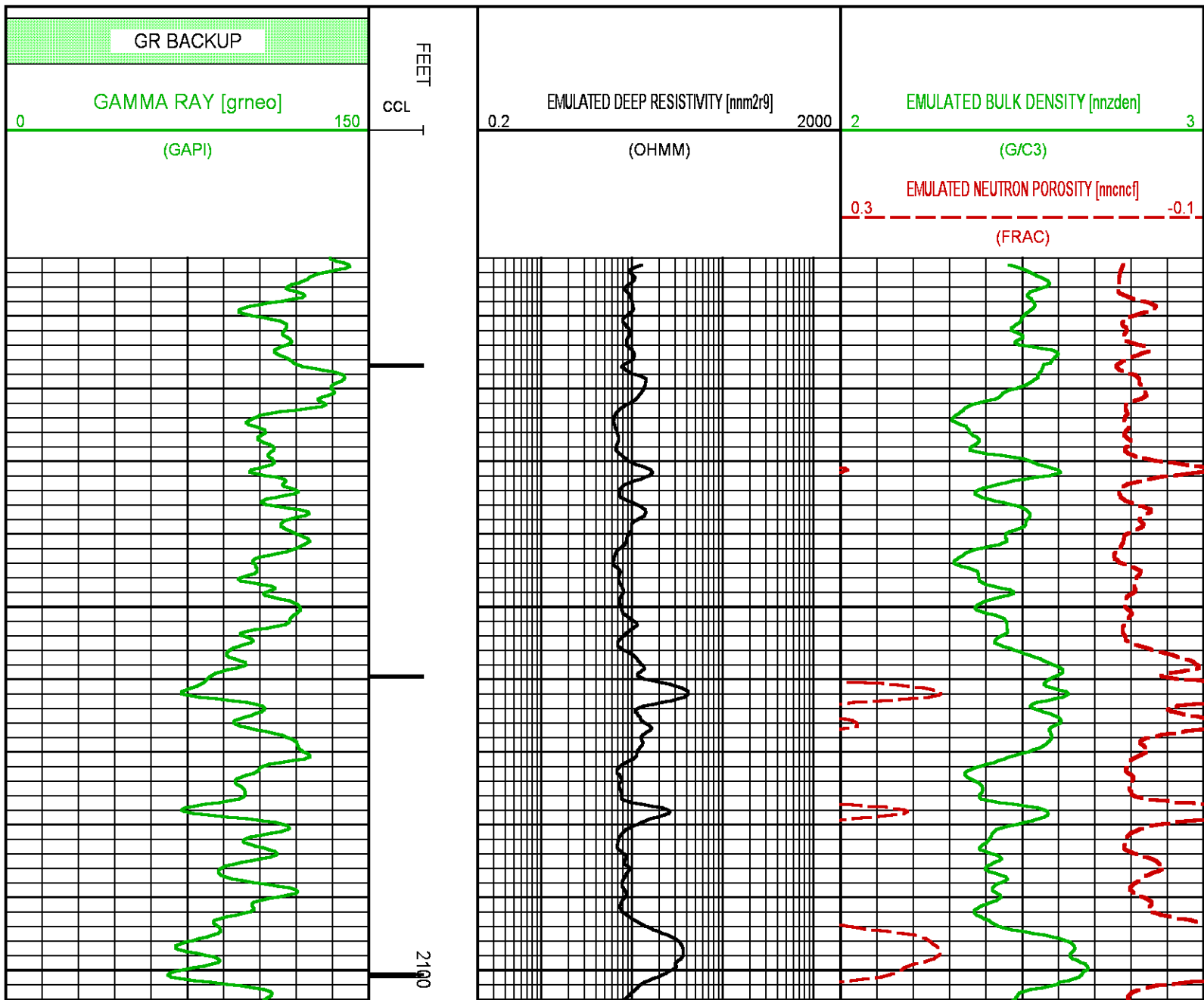
ANY ERRORS IN THE TRAINING WELL OPENHOLE DATA CAN PERETUATE THROUGH AS ERROR IN THE EMULATED RESULTS

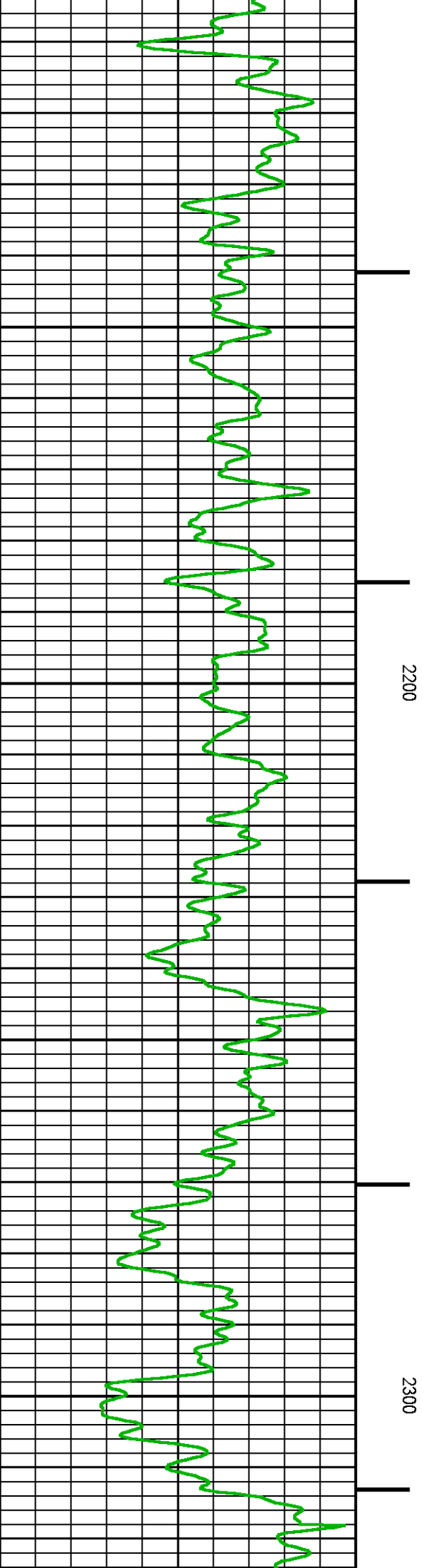
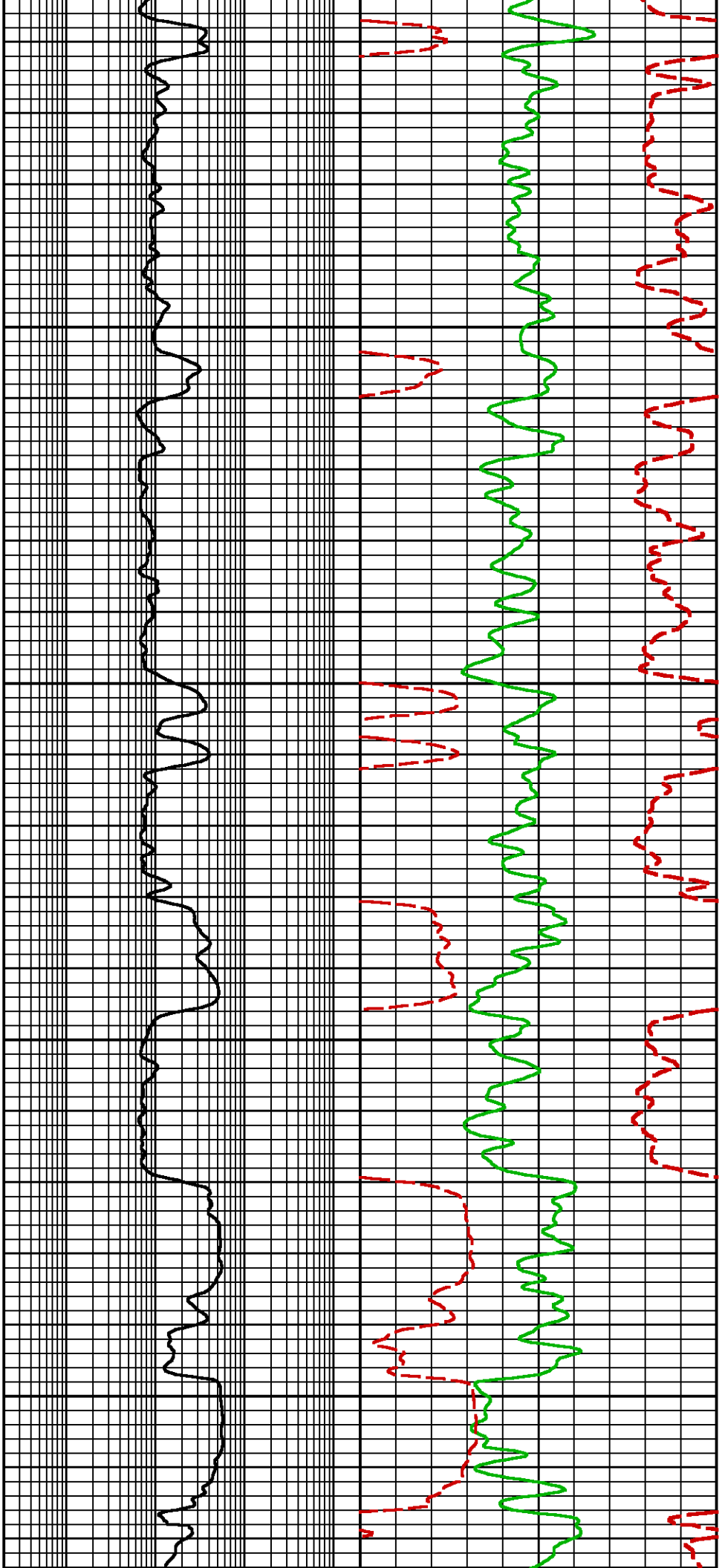
BOND LOG IS DEPTH REFERENCE LOG

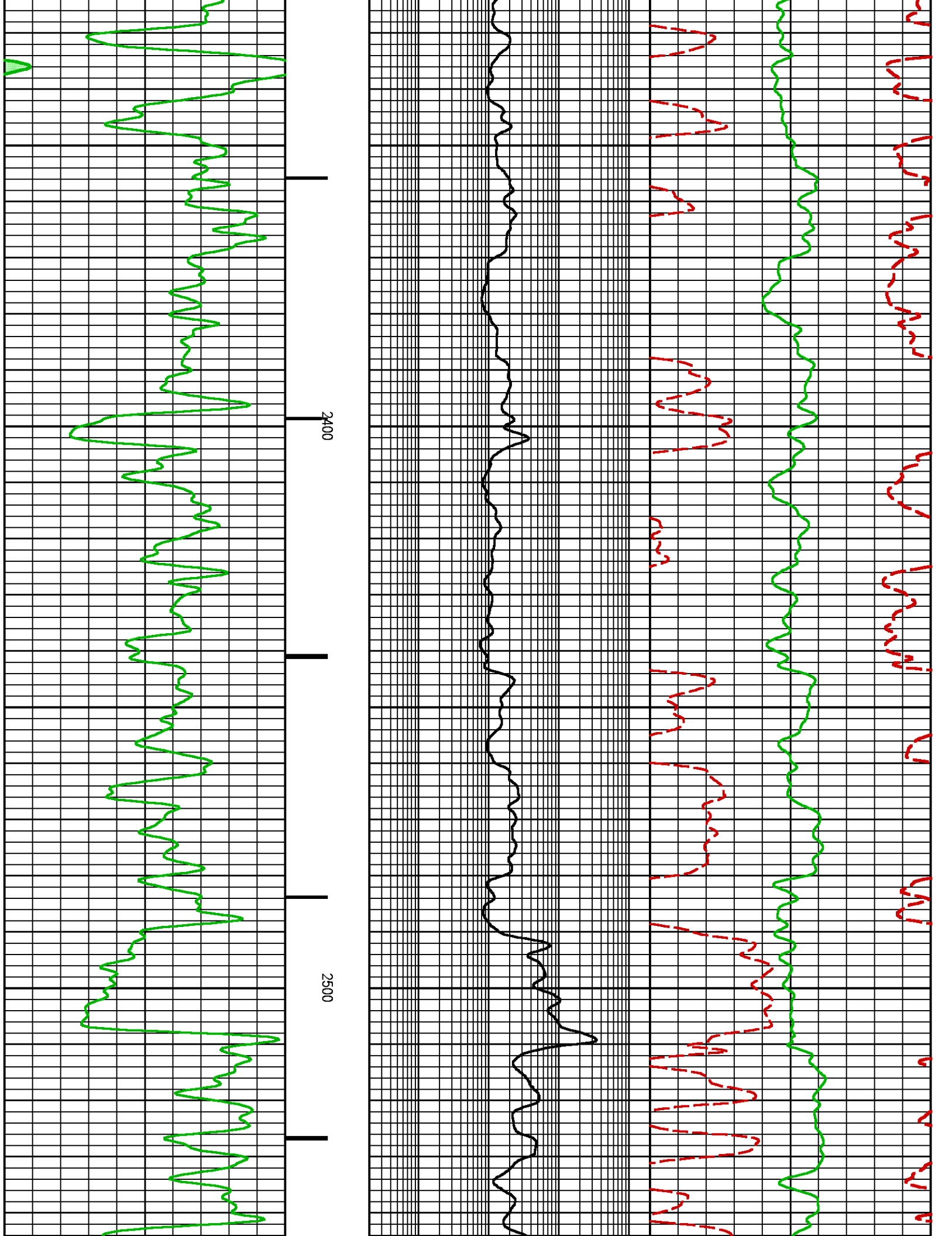
NEO RESULTS FOR NICHOLS 0994-24-10W (G-SAND)

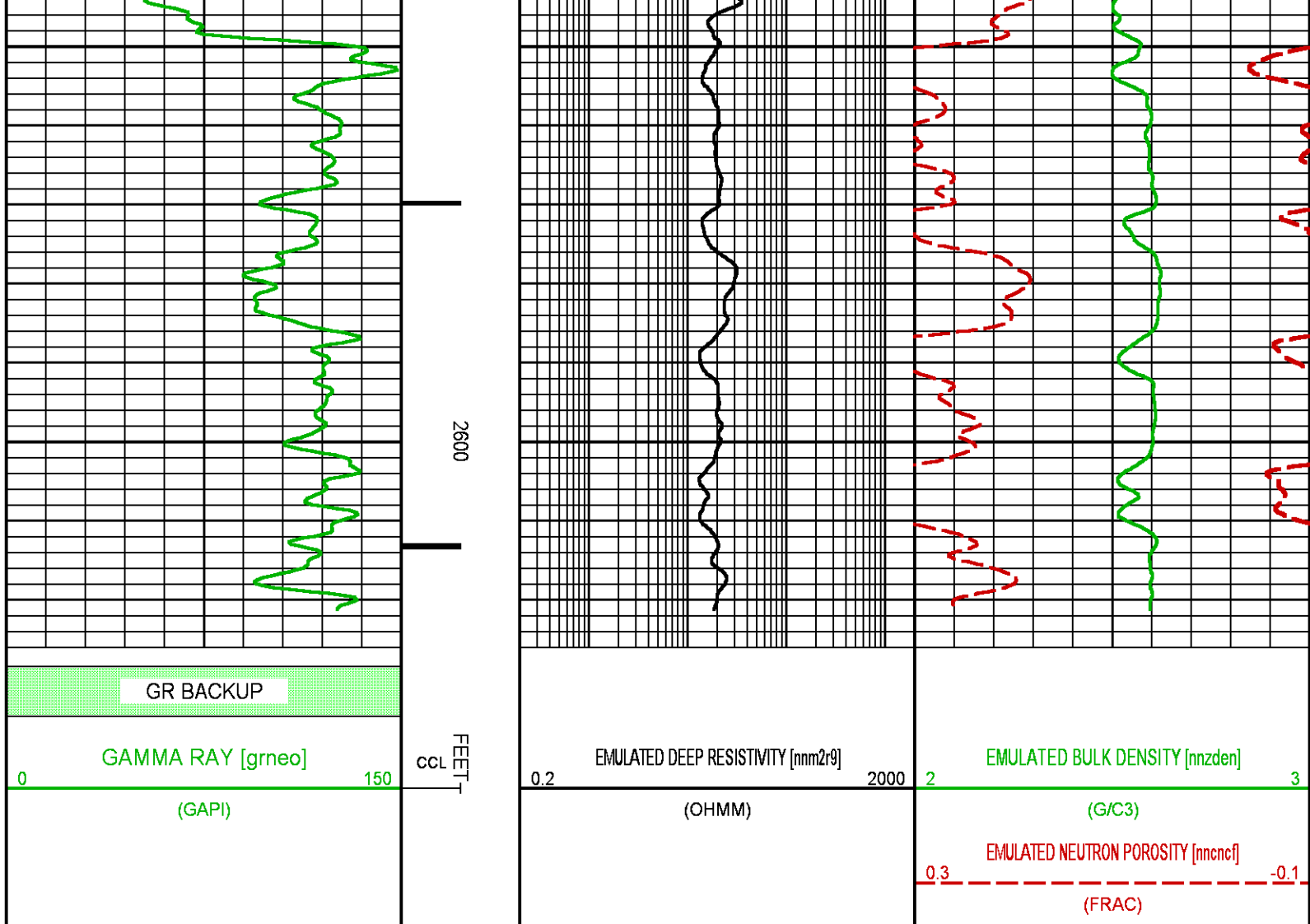
Project : NA
User : ellskima
Presentation : BHI3BKZH12:C:\Ape_Projects\laramie_nichols_24_10w\NEO_PRESENTATION_LARAMIE_G-Sand.pdf [5"/100' Scale]
Plot Interval : 2002 - 2625 Feet

Data File 1 : F1 : BHI3BKZH12:C:\Ape_Projects\laramie_nichols_24_10w\Merged_Set_Final.xtf
Created On : N/A
Company : LARAMIE ENERGY LLC
Well : NICHOLS 0994-24-10W
Field : VEGA
File Interval : 2002 - 7392 Feet
OCT : NA



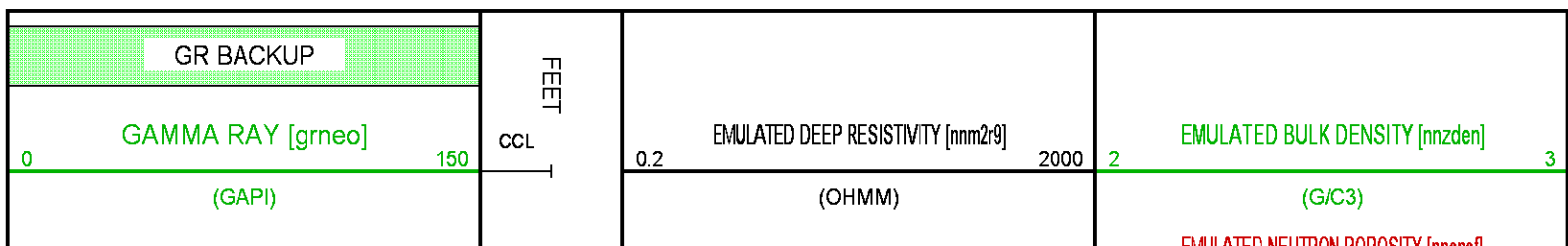




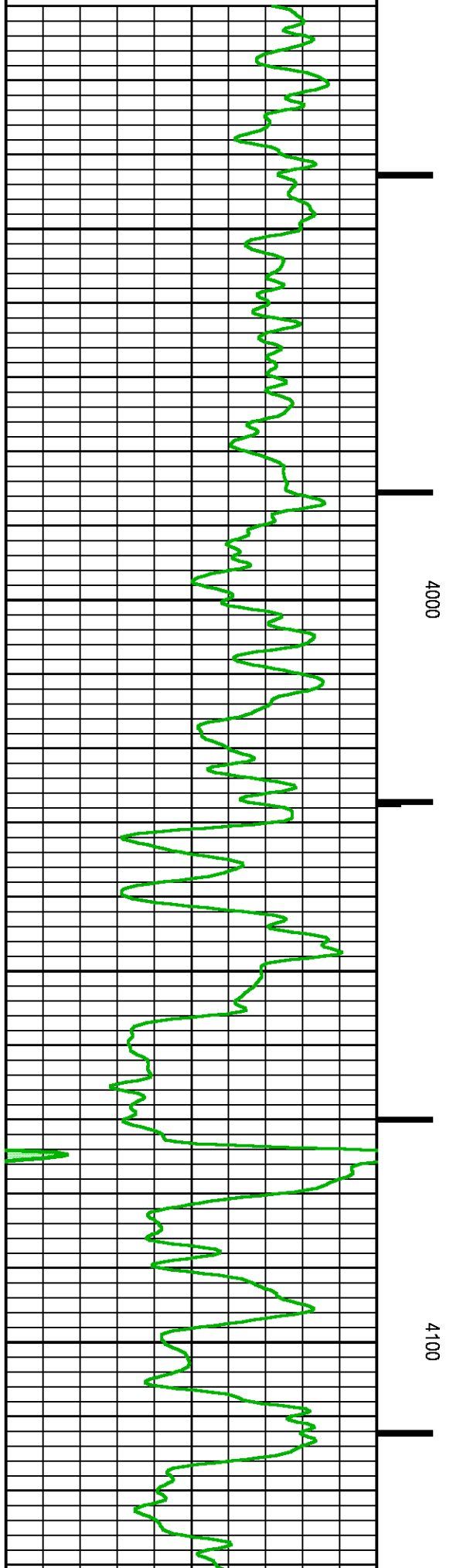
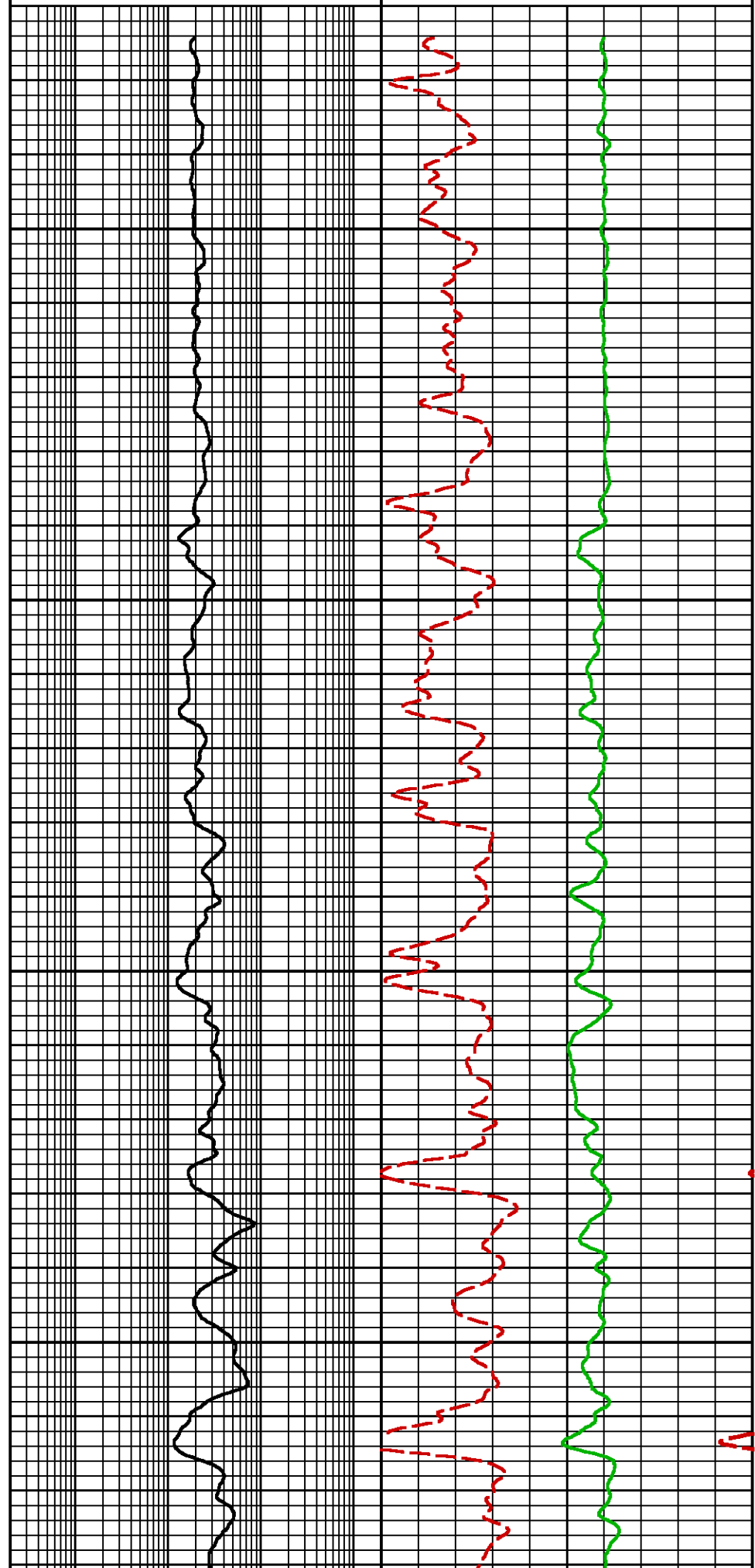


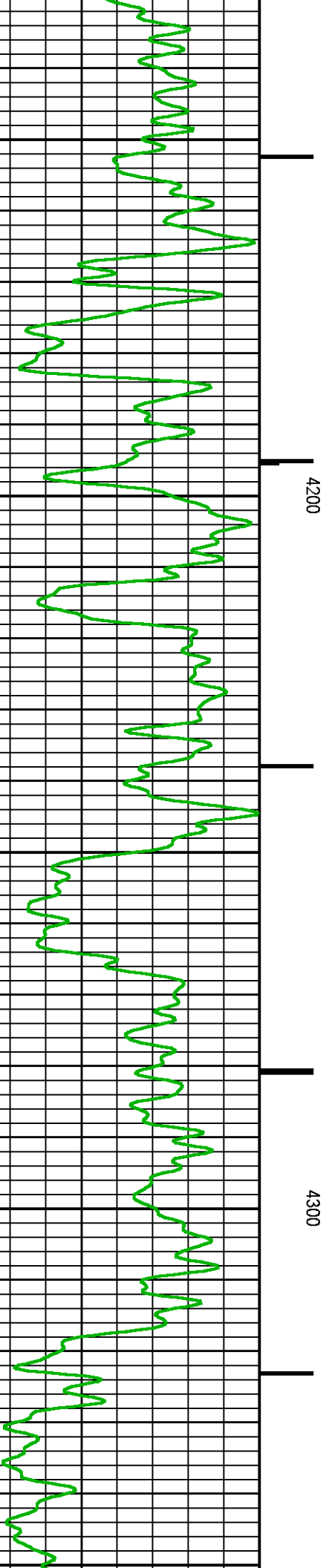
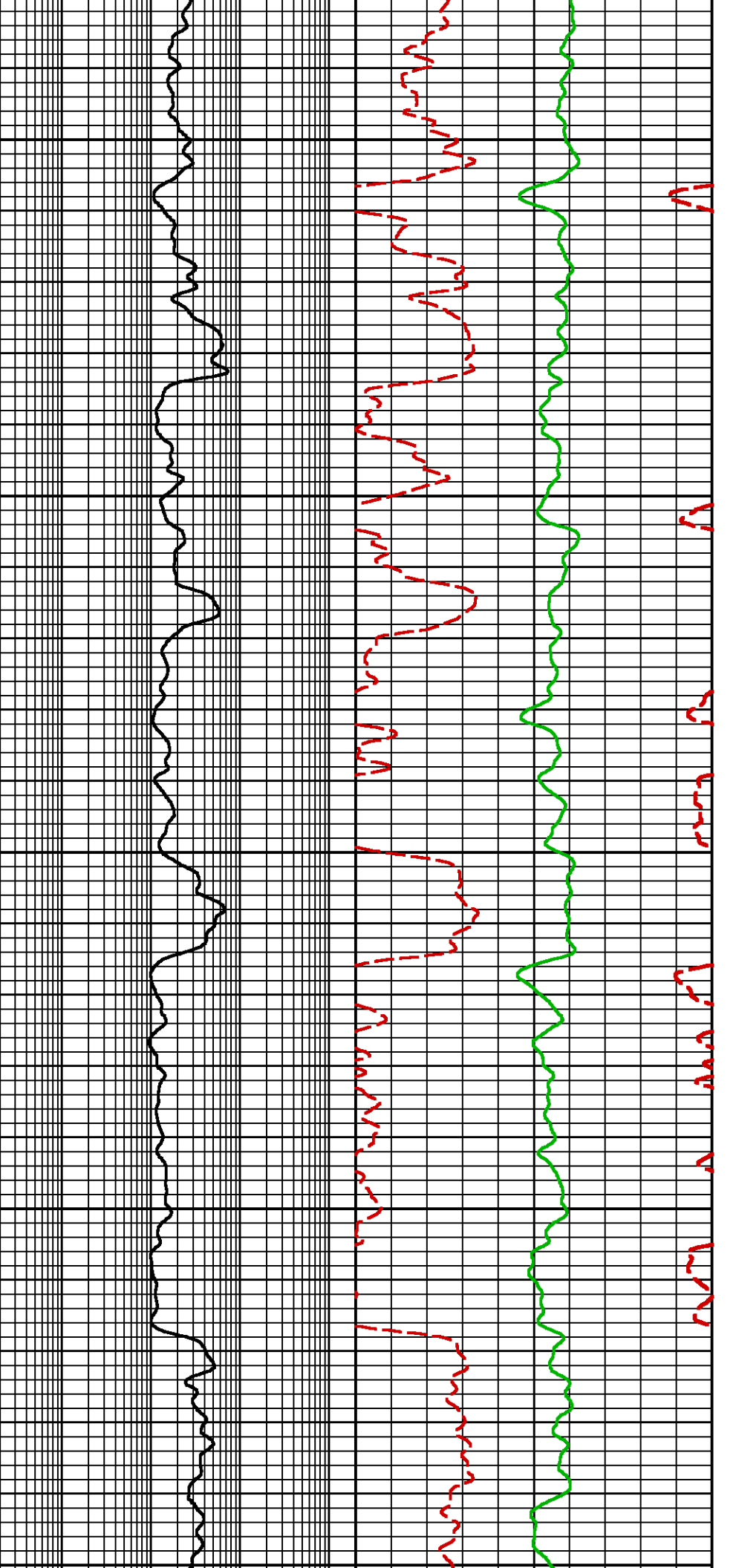
NEO RESULTS FOR NICHOLS 0994-24-10W (MAIN)

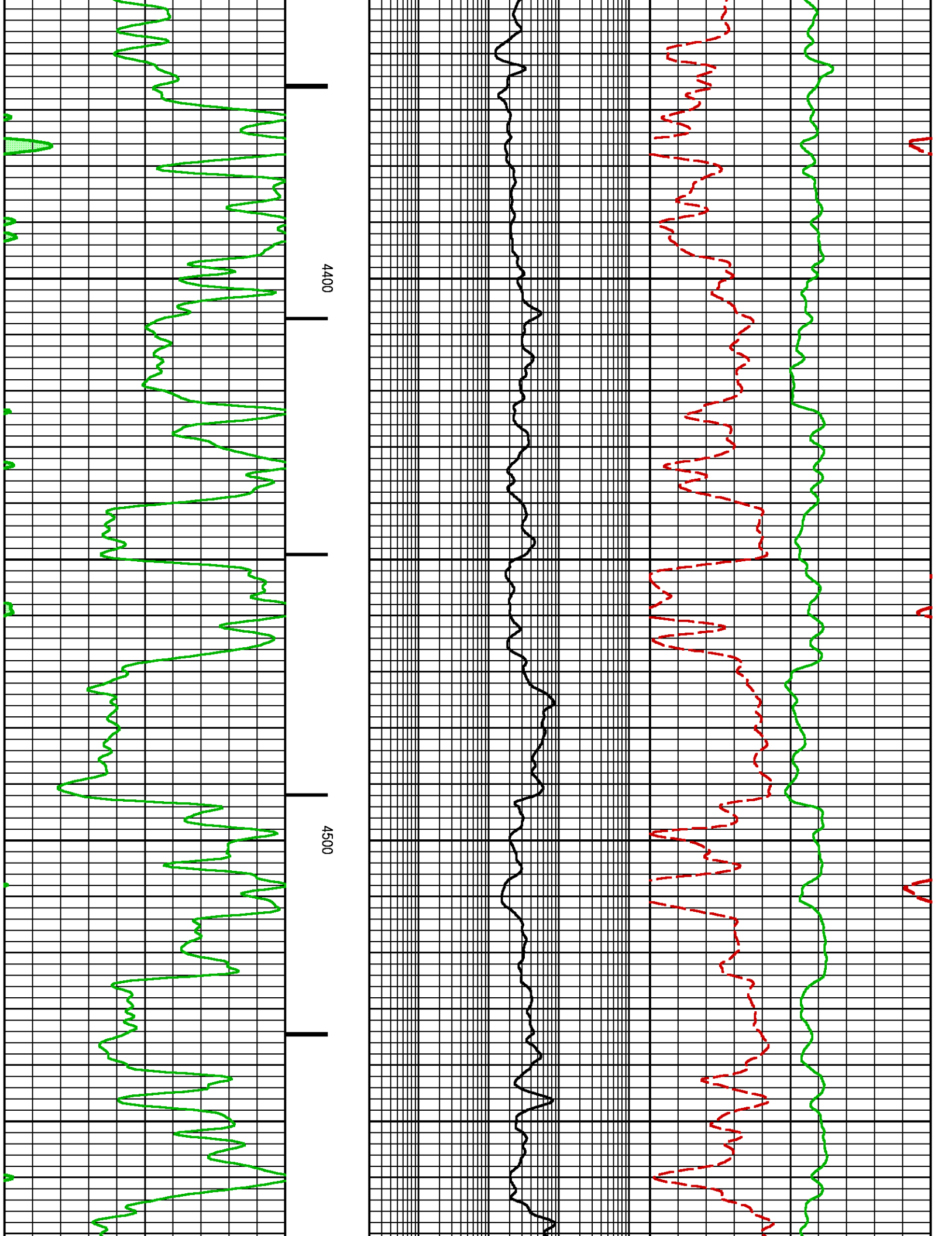
Project : NA
User : ellskima
Presentation : BHI3BKZH12:C:\Ape_Projects\laramie_nichols_24_10w\NEO_PRESENTATION_LARAMIE_MAIN.pdf [5"/100' Scale]
Plot Interval : 3920 - 7392 Feet
Data File 1 : F1 : BHI3BKZH12:C:\Ape_Projects\laramie_nichols_24_10w\Merged_Set_Final.xtf
Created On : N/A
Company : LARAMIE ENERGY LLC
Well : NICHOLS 0994-24-10W
Field : VEGA
File Interval : 2002 - 7392 Feet
OCT : NA

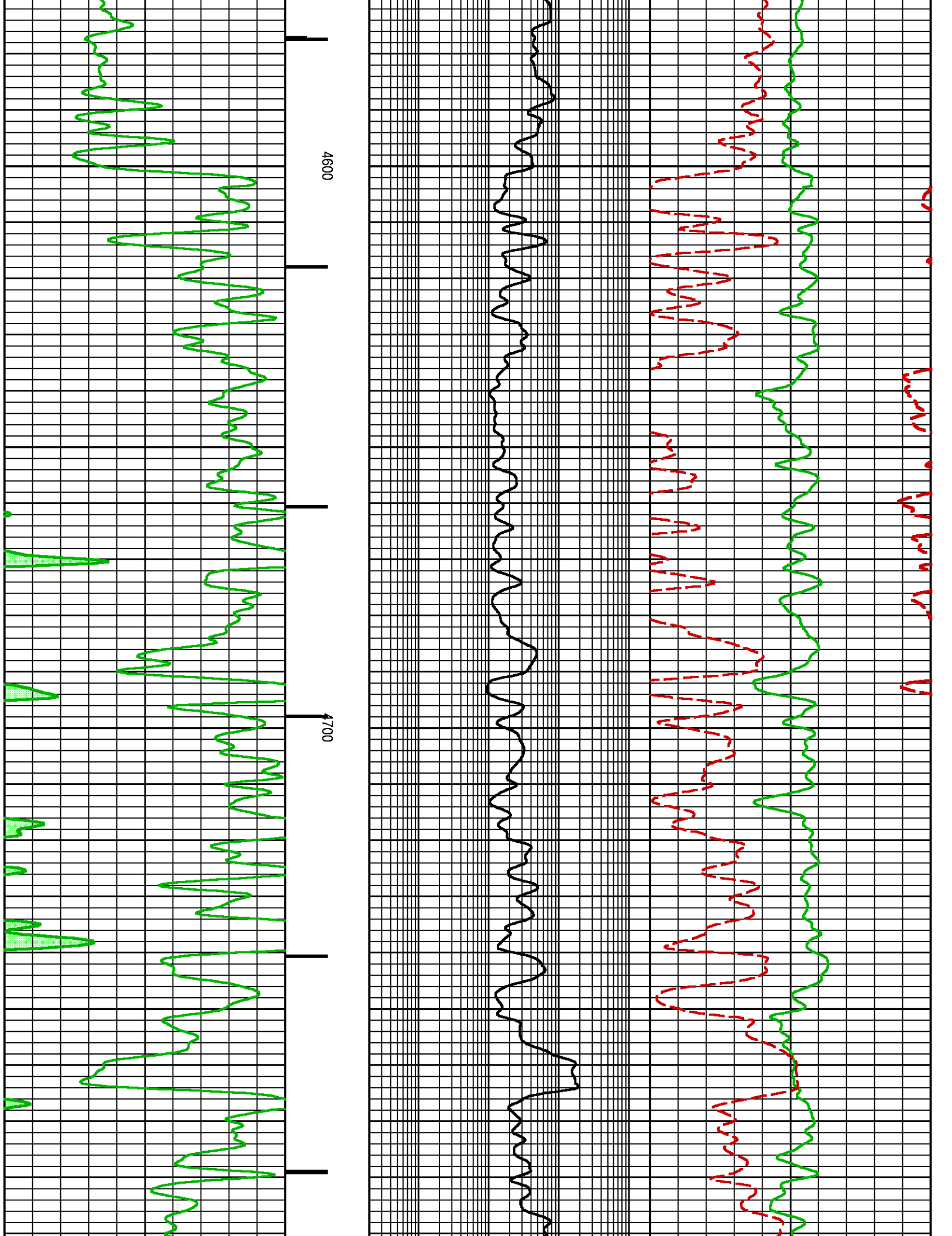


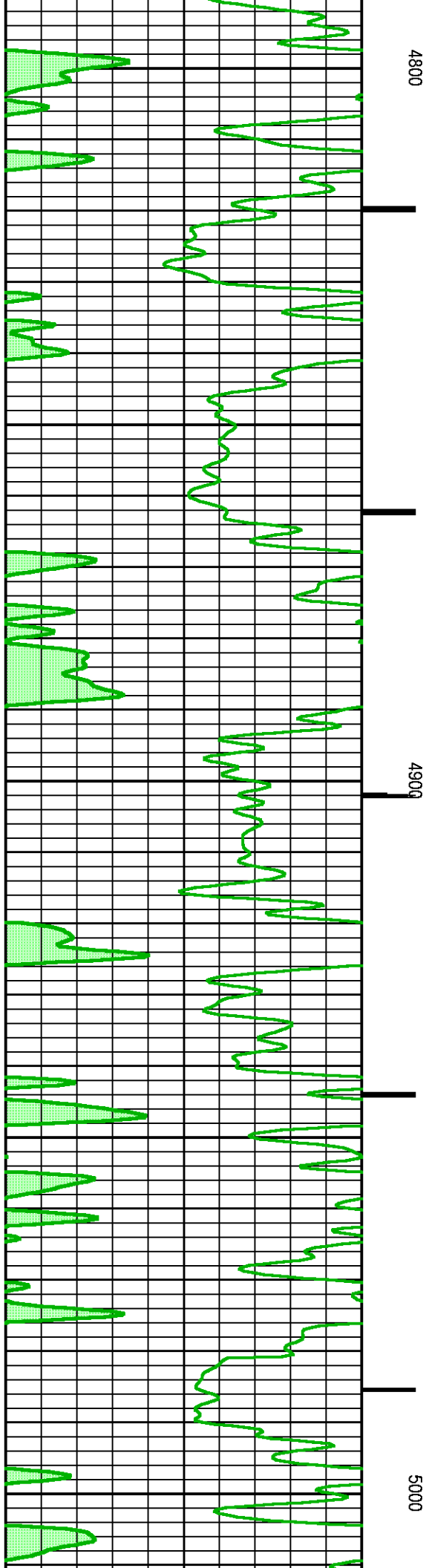
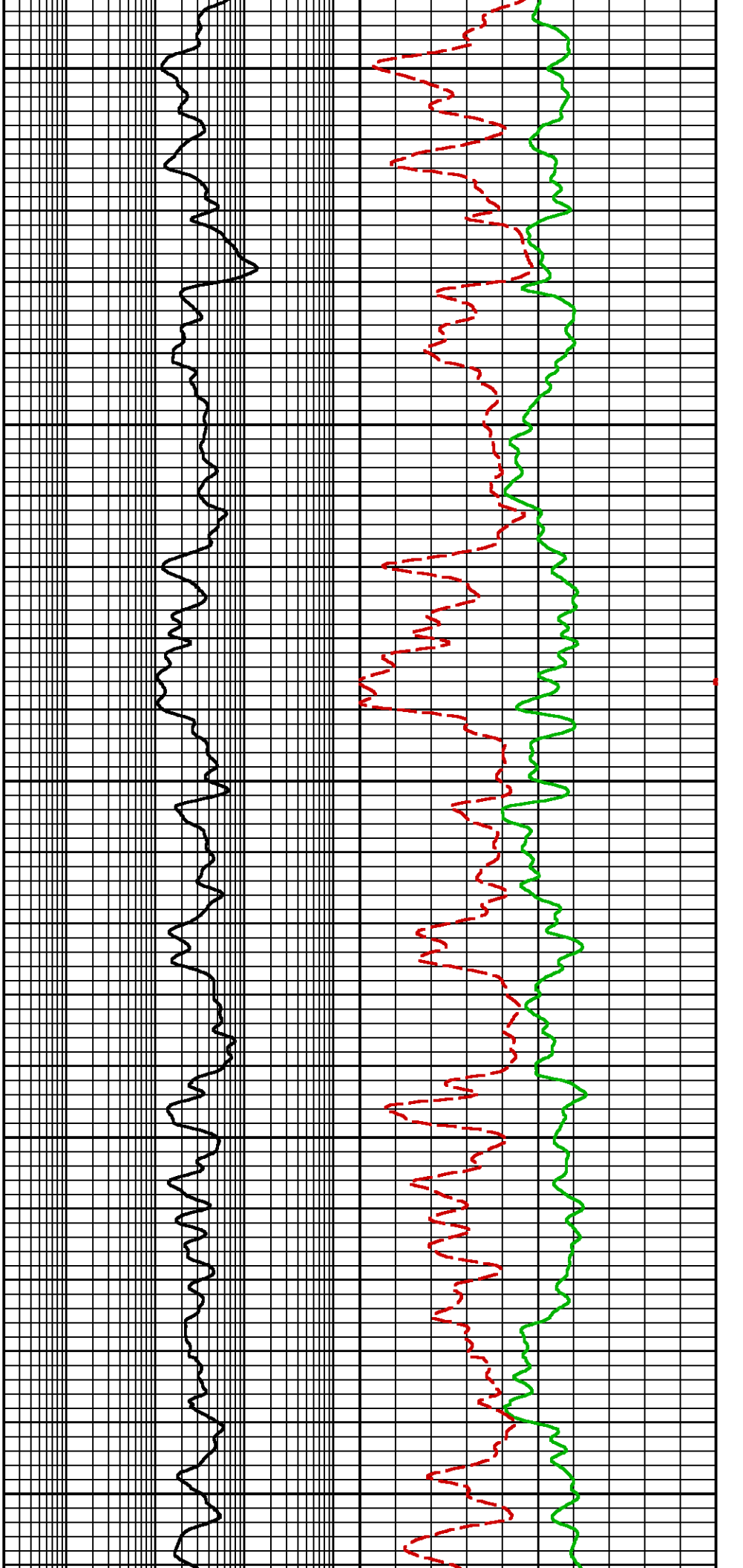
EMULATED NEUTRON POROSITY (mH2O)
0.3 -0.1
(FRAC)

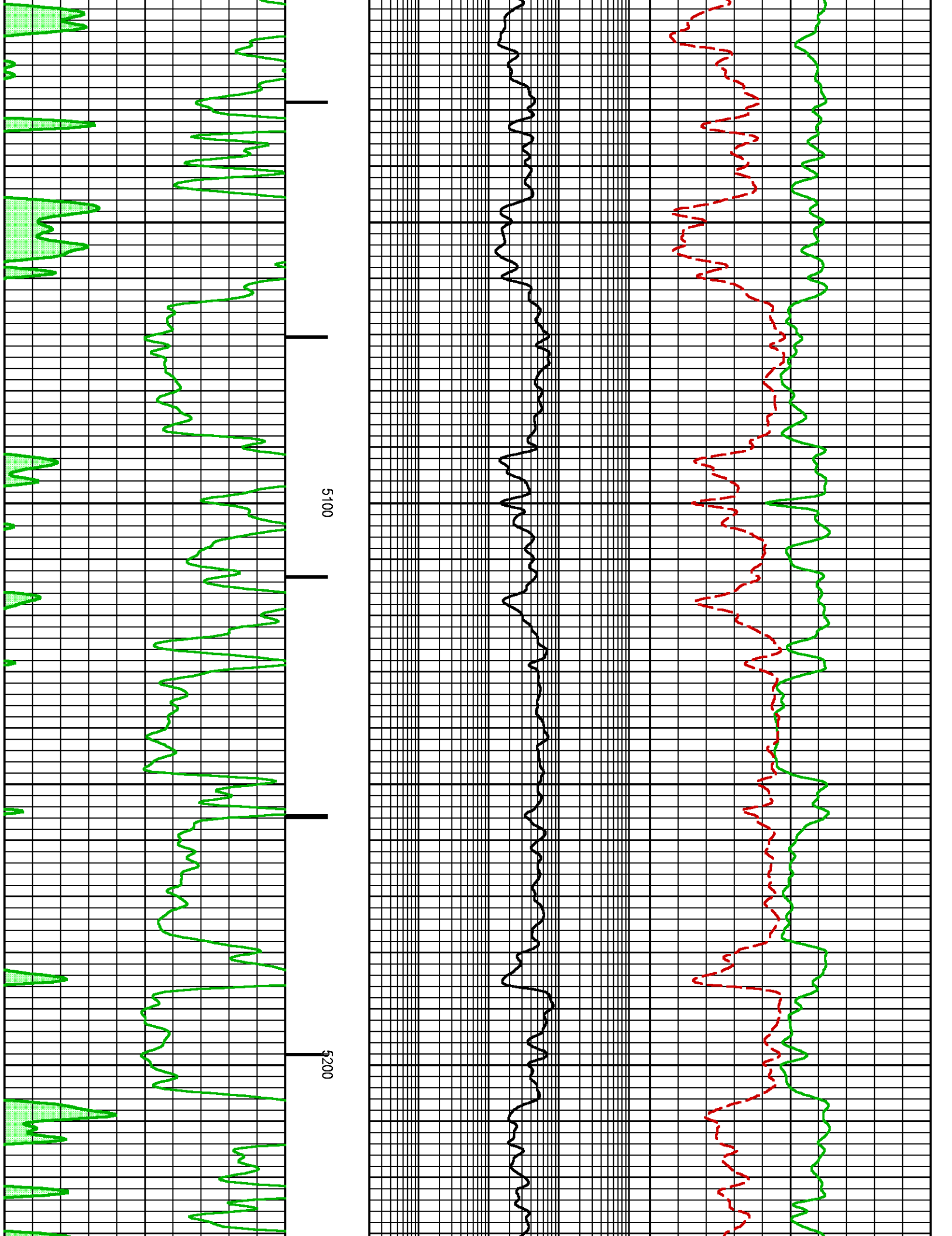


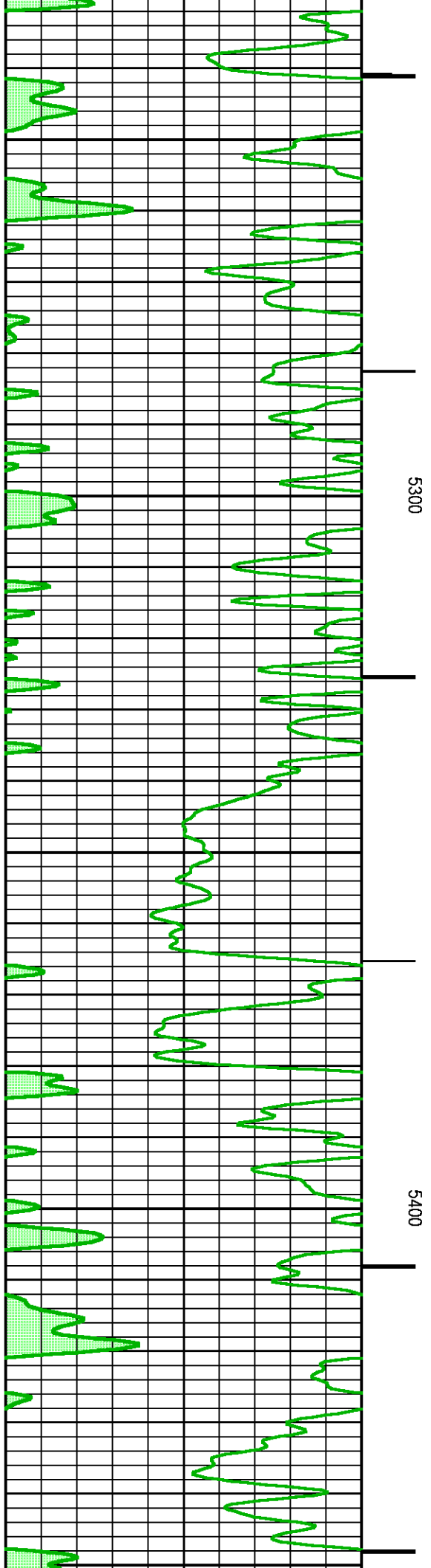
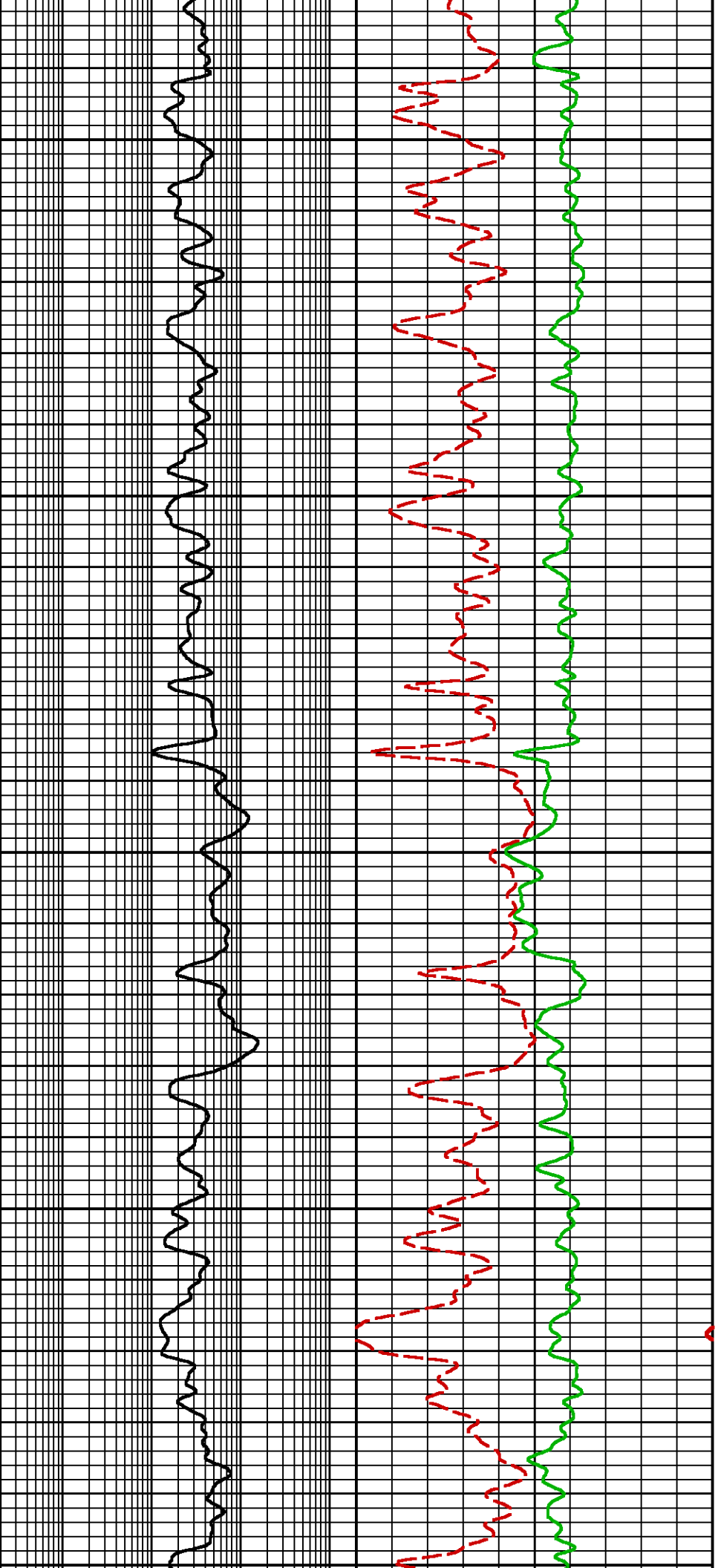


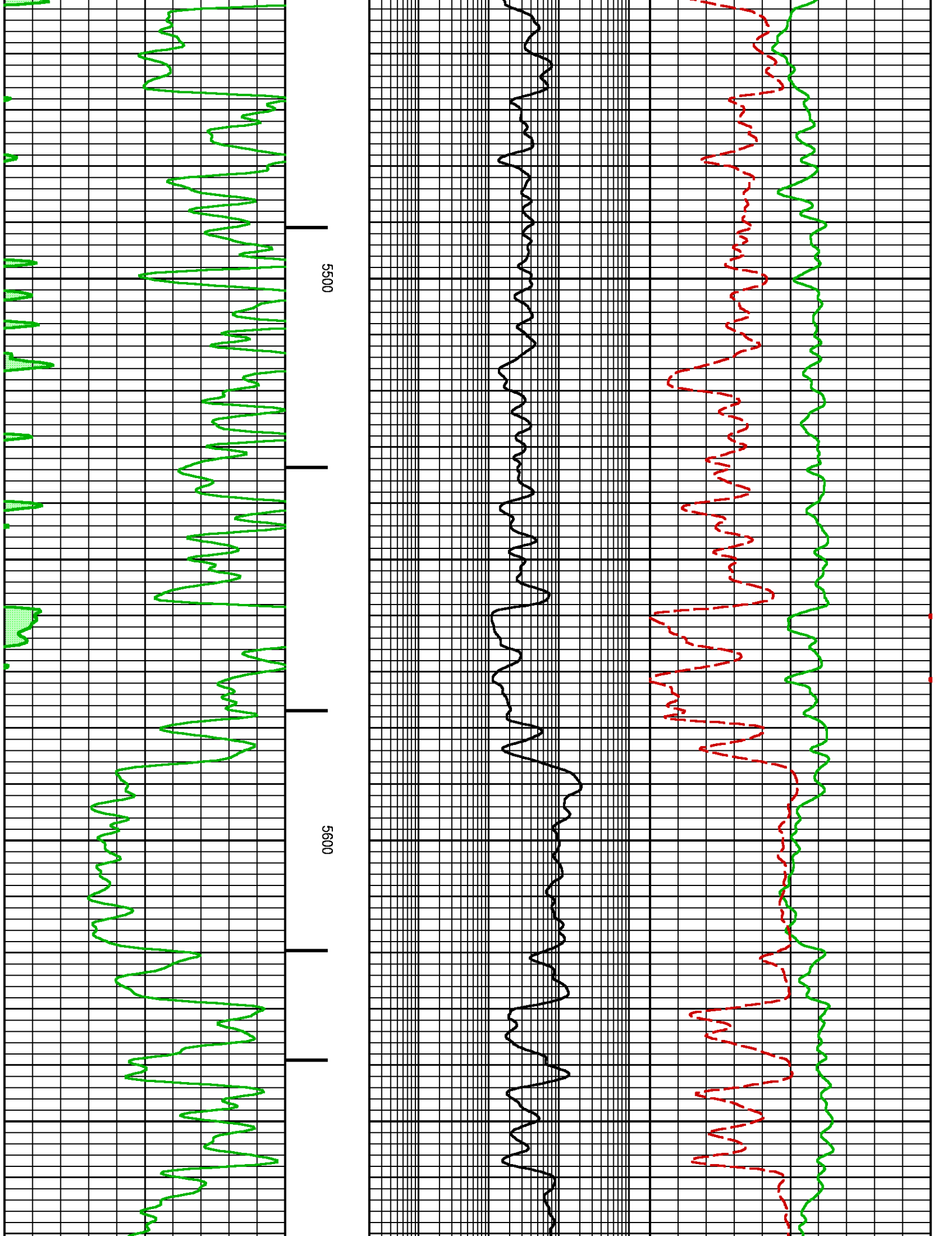


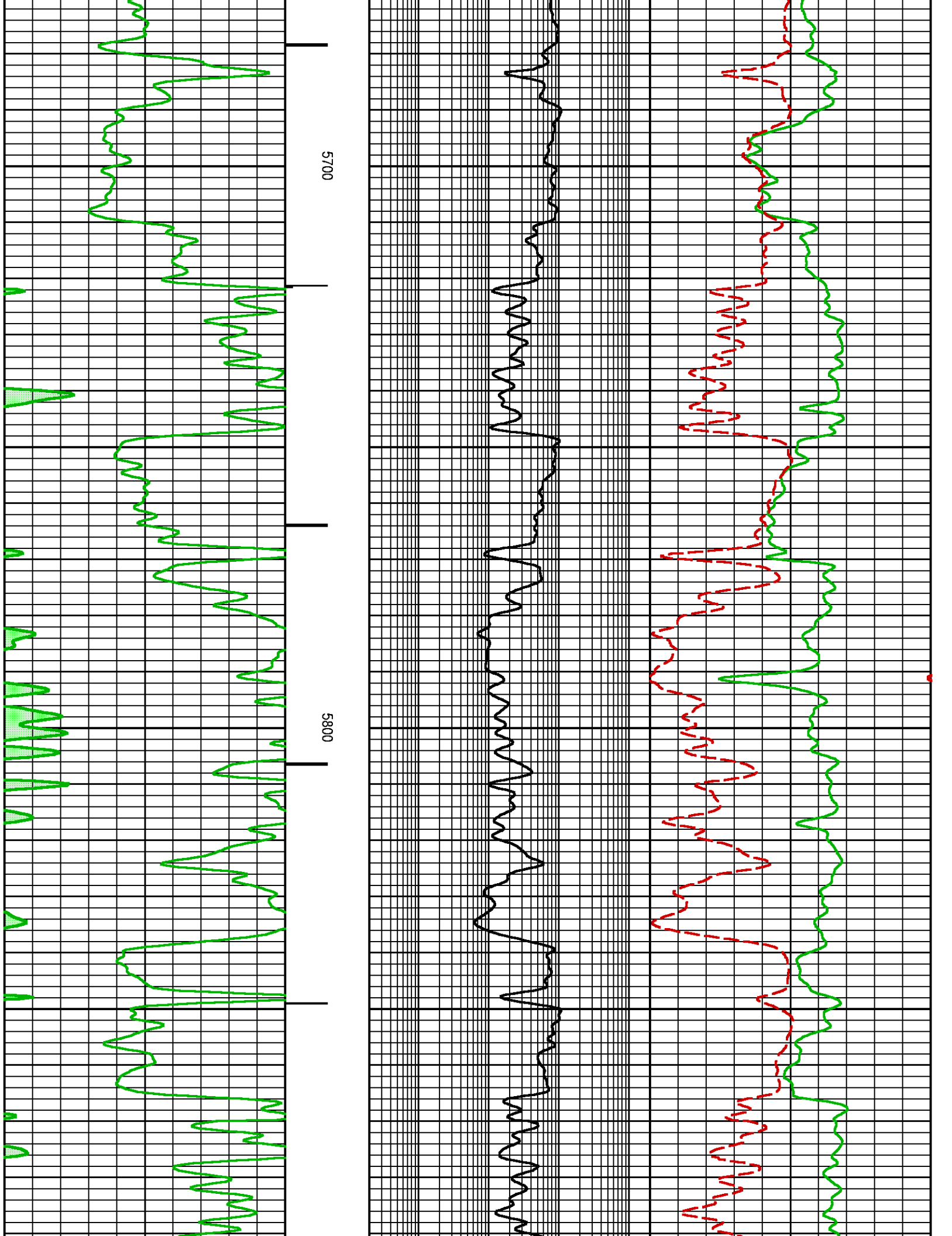


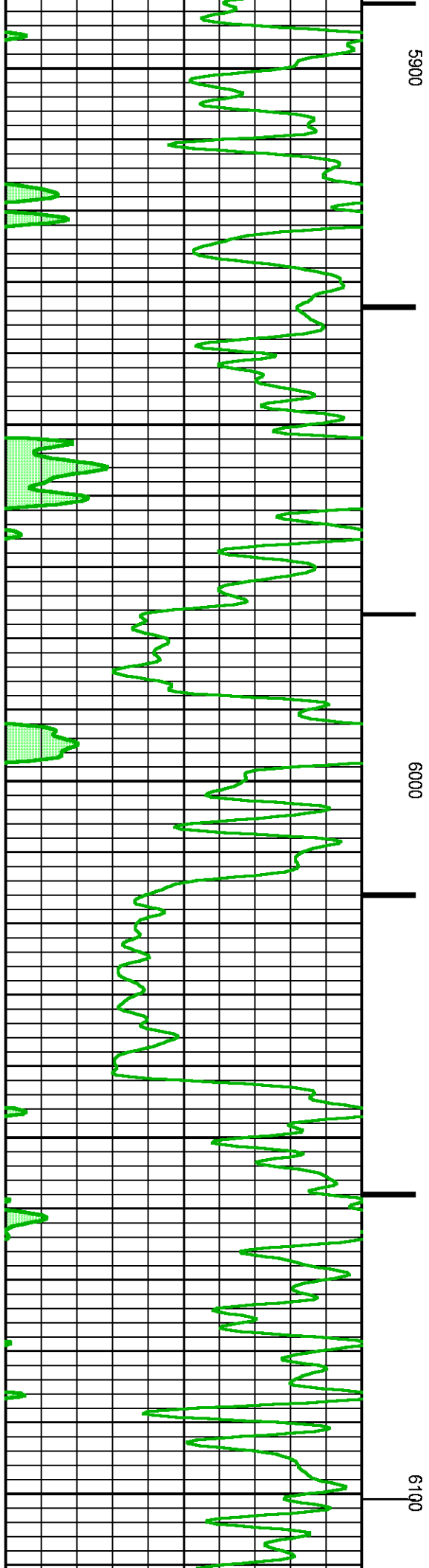
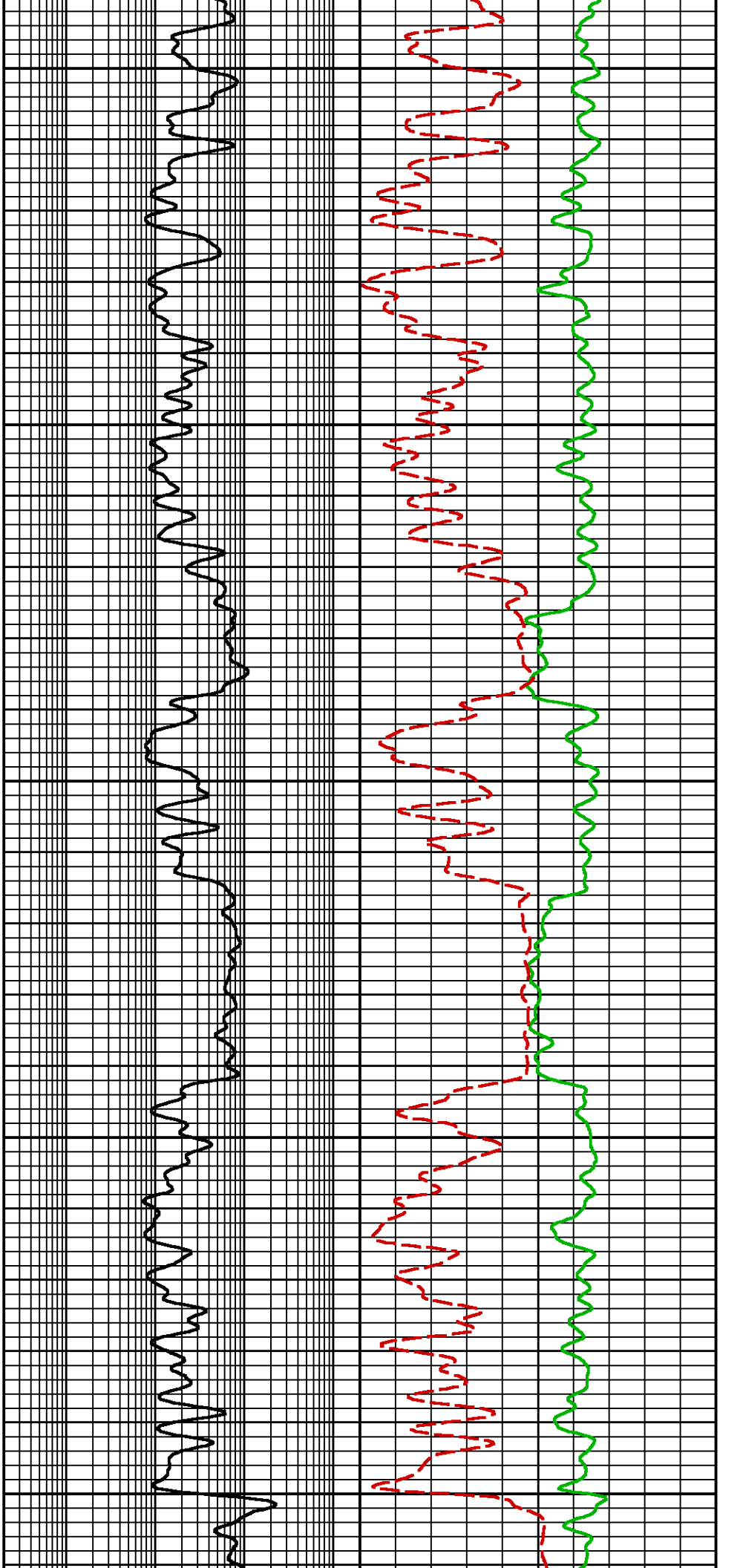


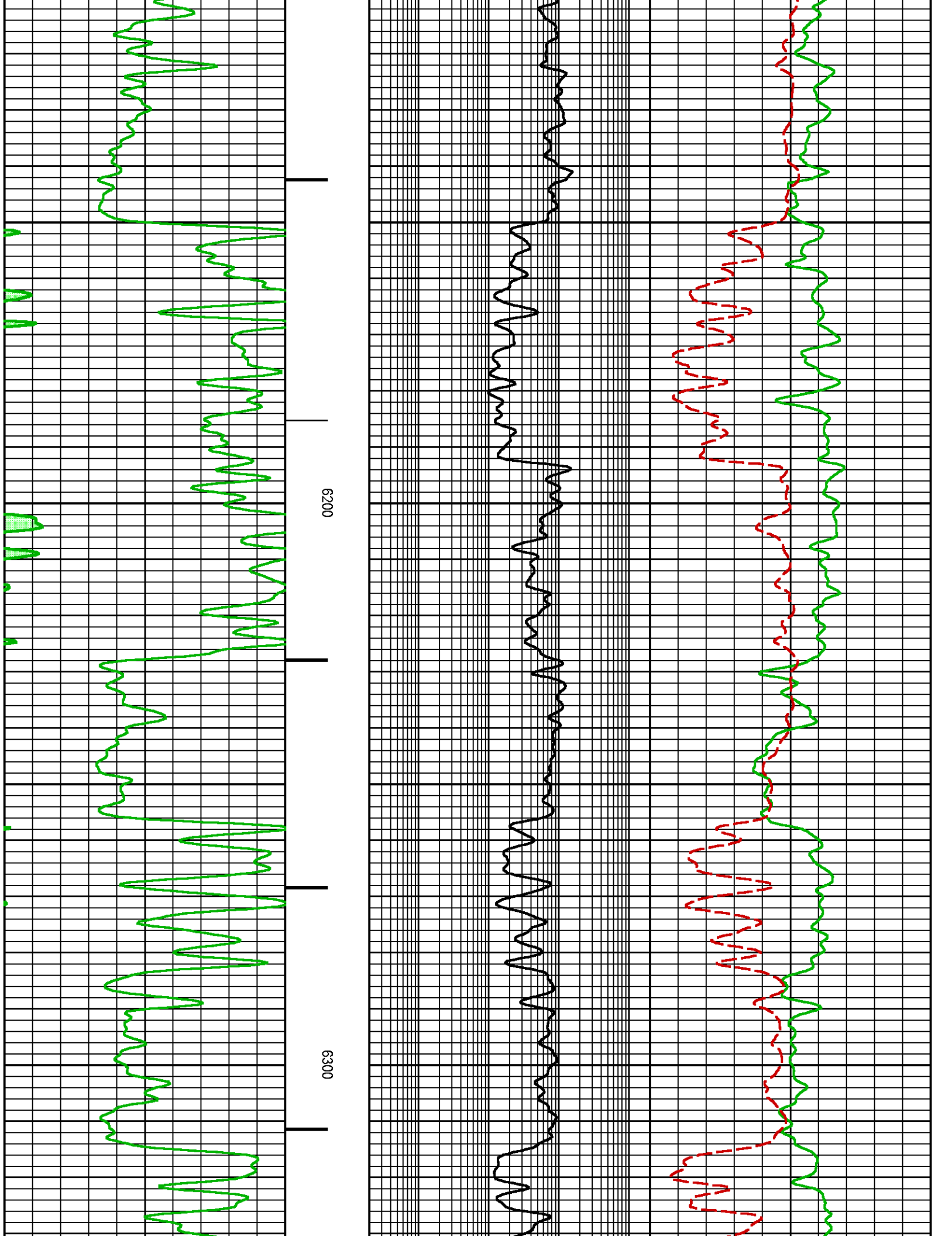


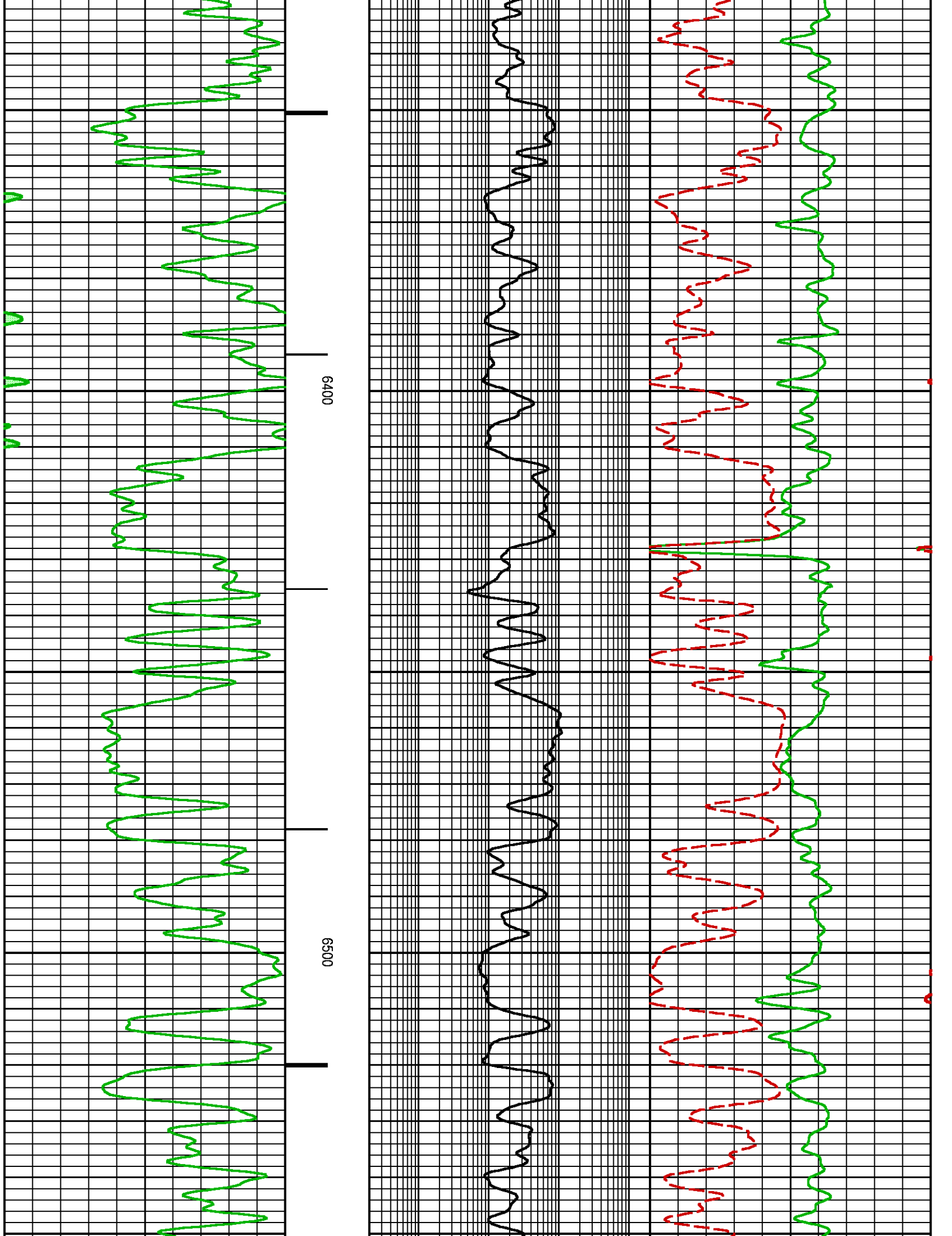


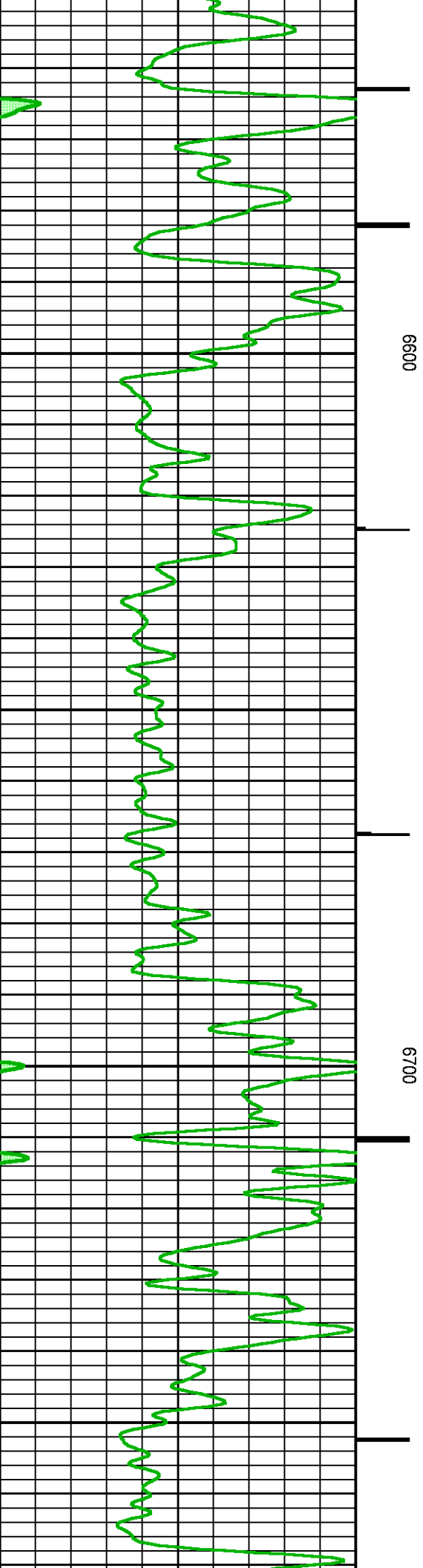
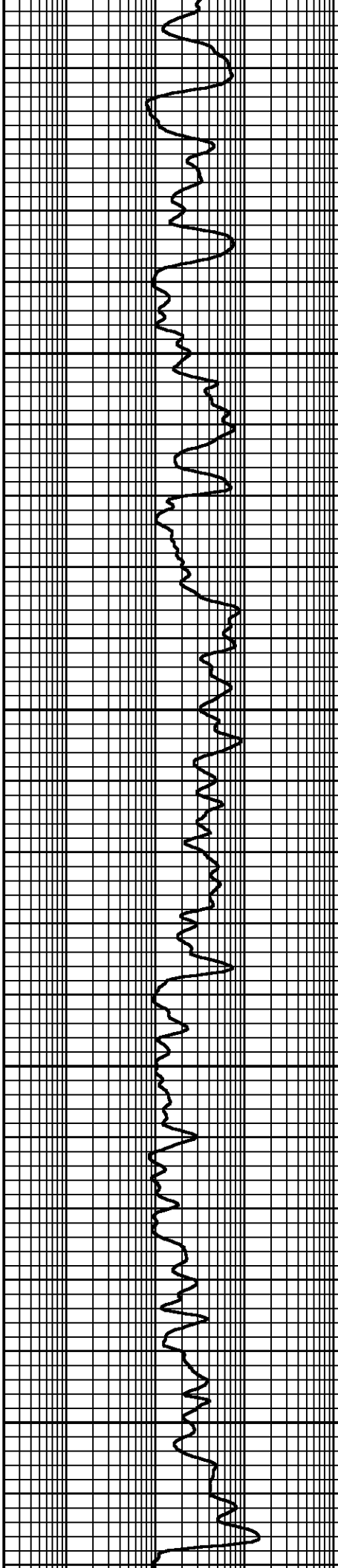
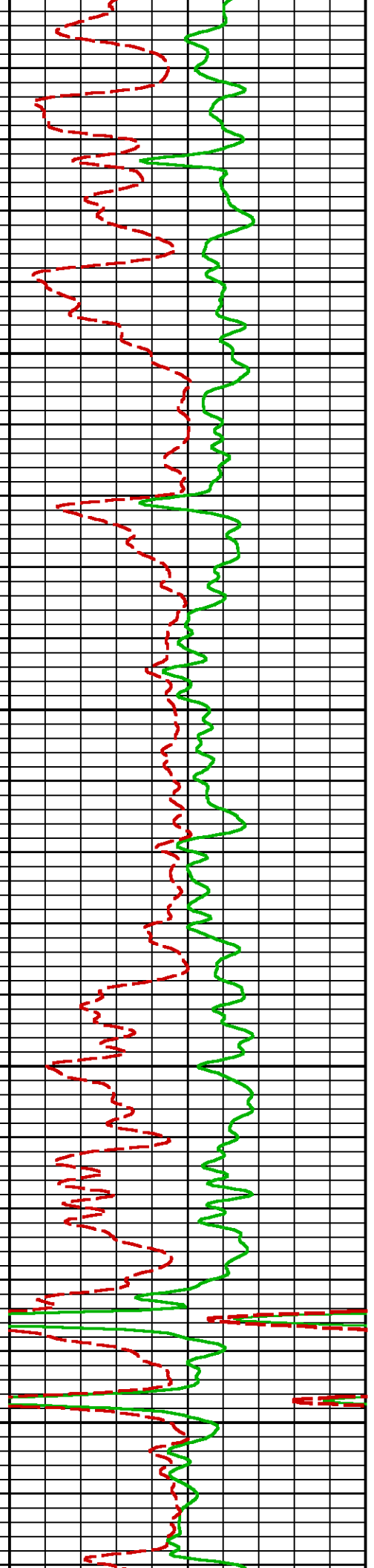


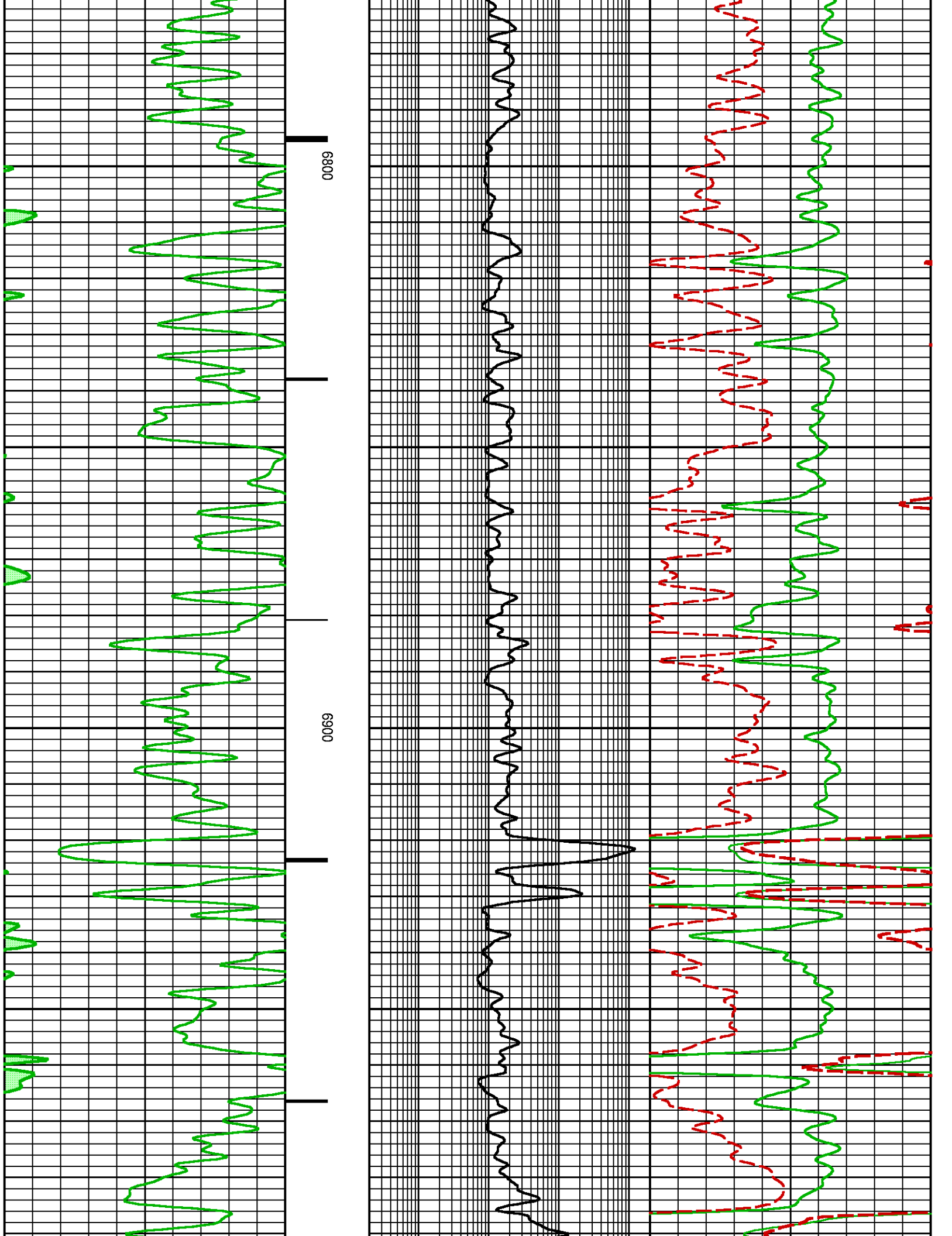


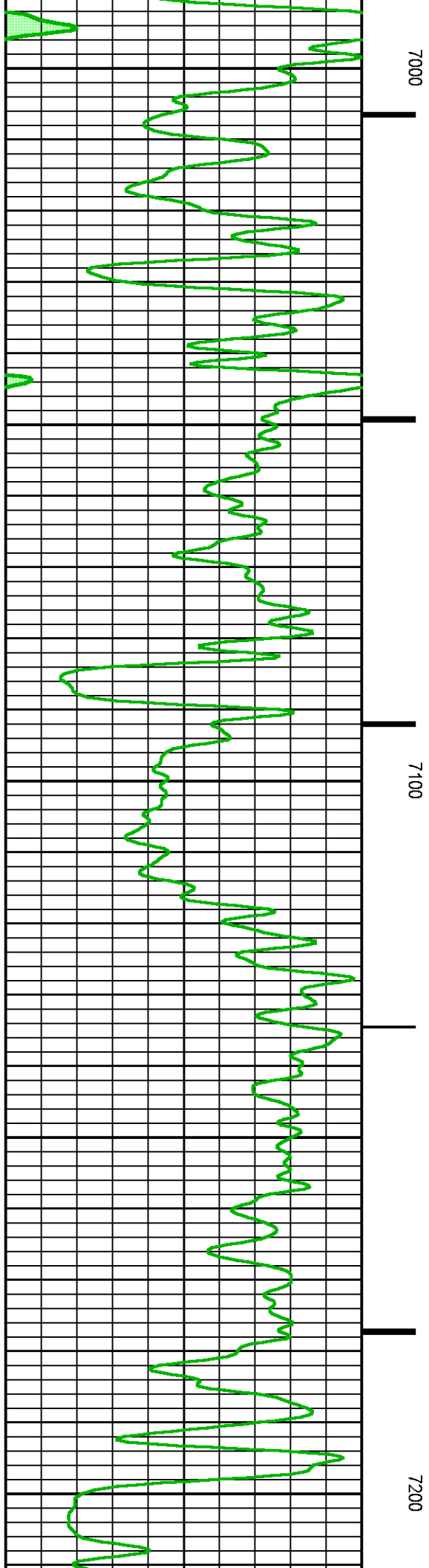
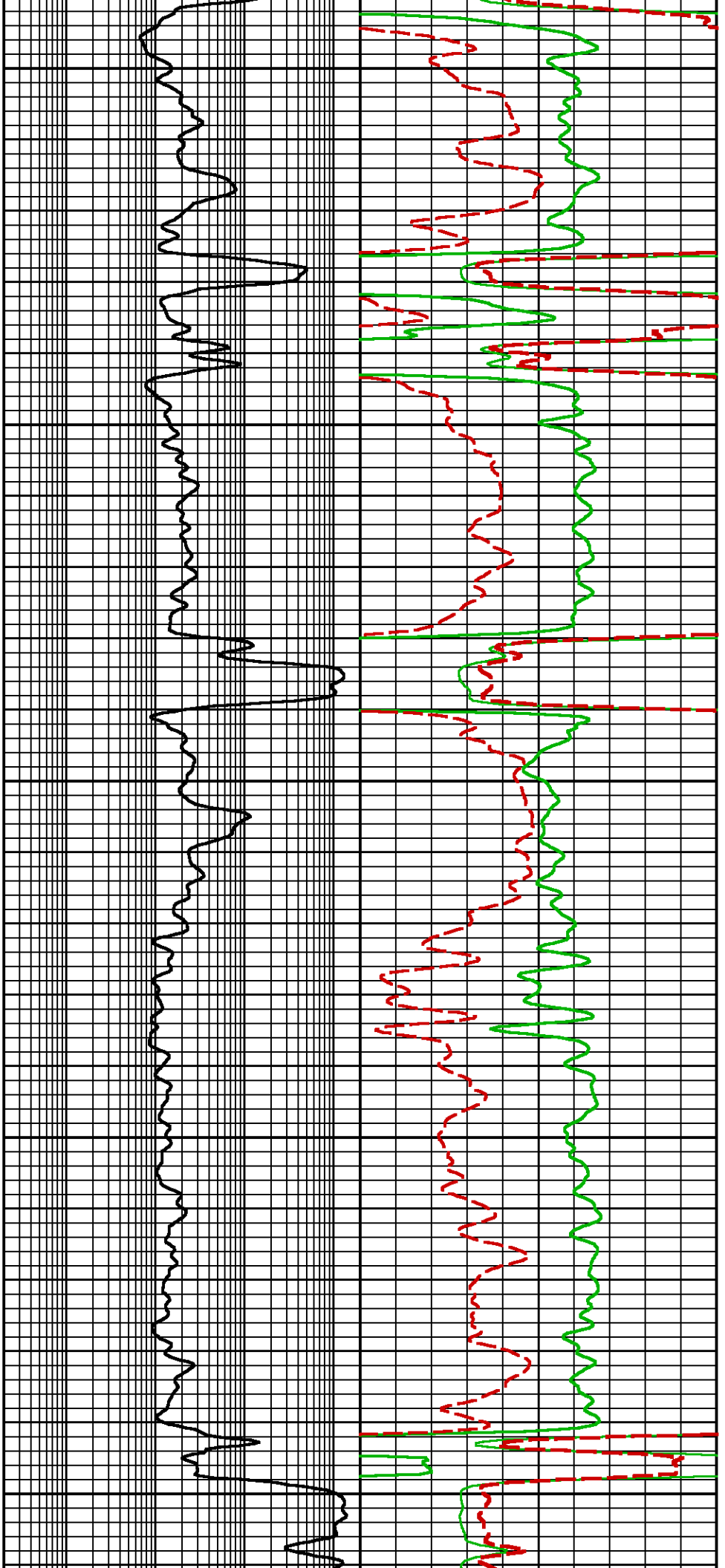


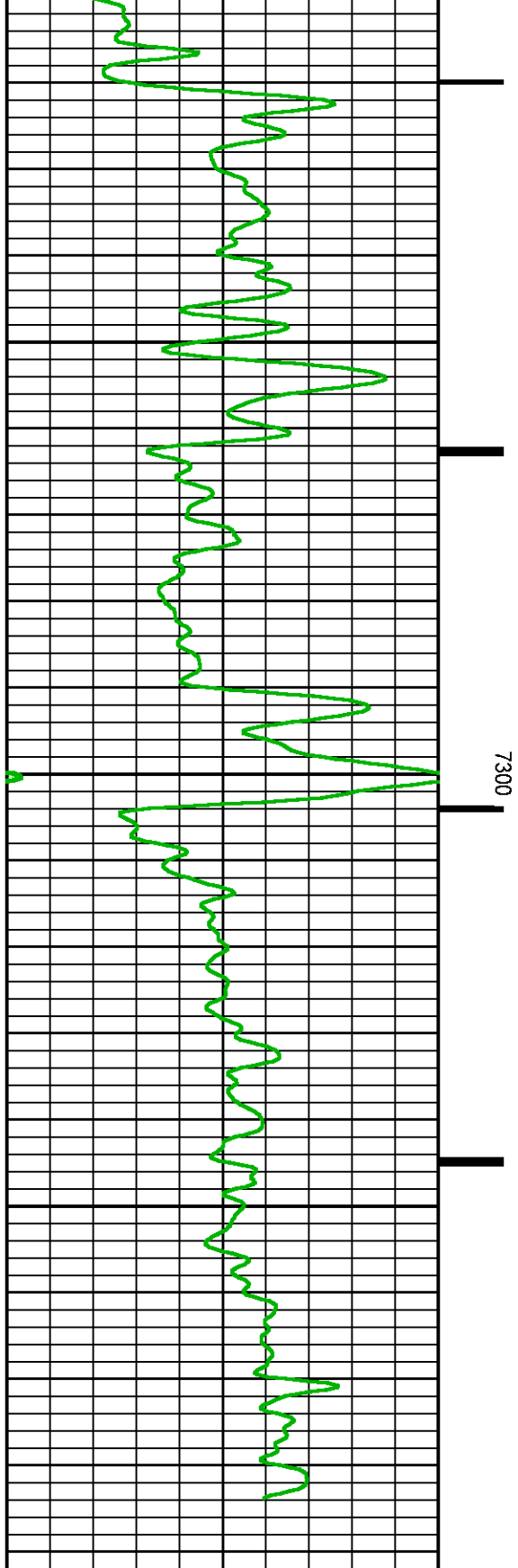












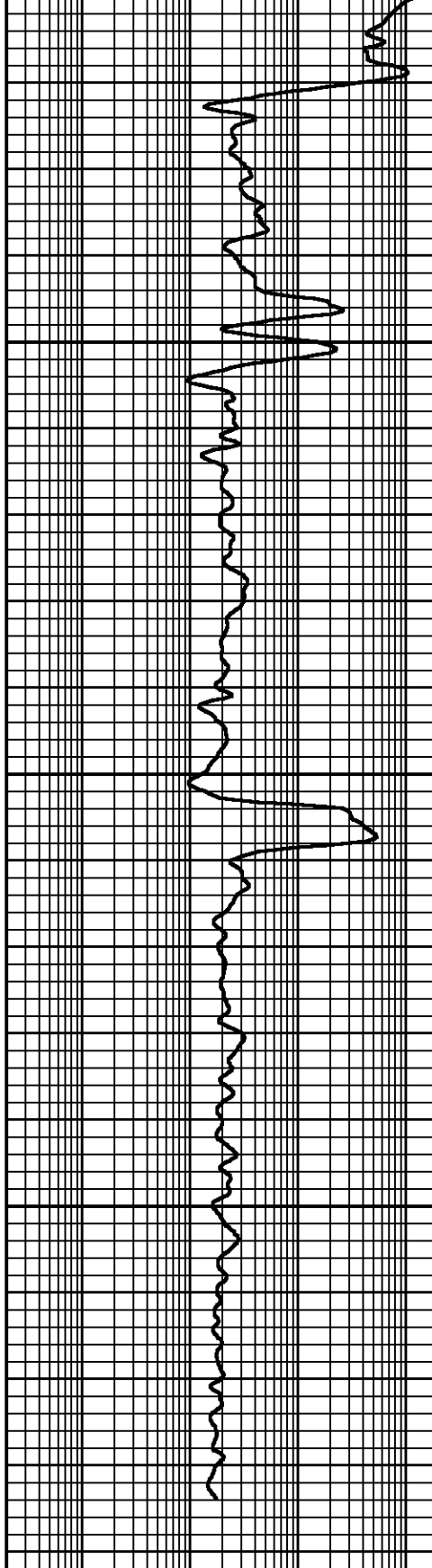
GR BACKUP

GAMMA RAY [grneo]

(GAPI)

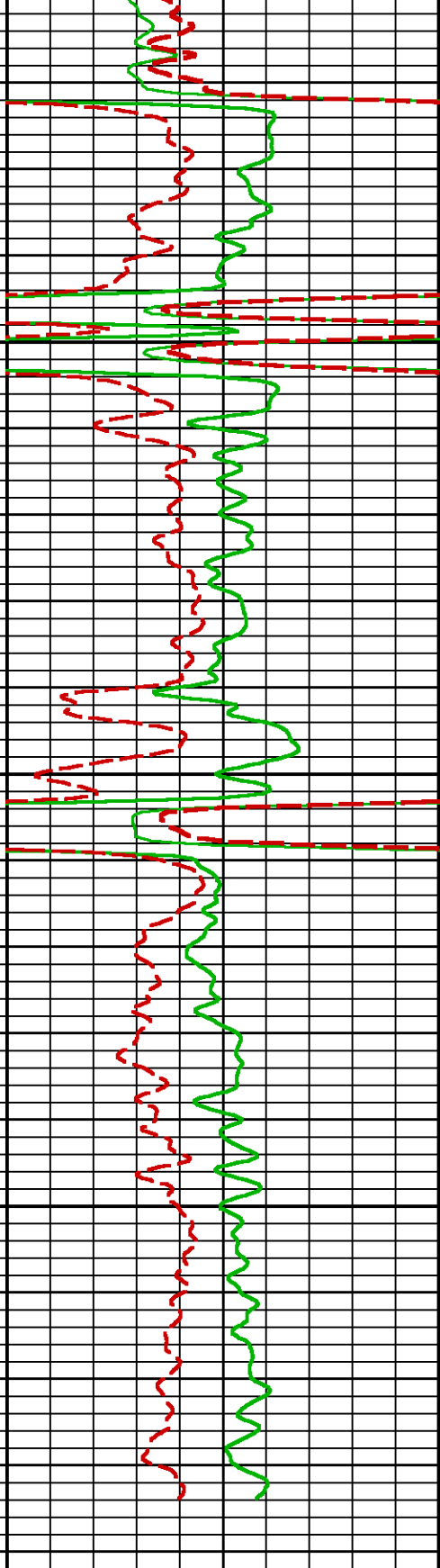
FEET

7300



EMULATED DEEP RESISTIVITY [nm2r9]

(OHMM)



EMULATED BULK DENSITY [nnzden]

(G/C3)

EMULATED NEUTRON POROSITY [nnncf]

(FRAC)

0.2

2000

2

3

0.3

-0.1



COMPANY LARAMIE ENERGY LLC
WELL NICHOLS 0994-24-10W
FIELD VEGA
COUNTY MESA STATE COLORADO

FILE NO: _____
API NO: _____
05-077-10395-0000

LOCATION:

SEE REMARKS

SEC 24 TWP 9S RGE 94W

ELEVATIONS:

KB 7236 FT

DF

GL 7212 FT

DATE 09-MAY-2018

Pulsed Neutron
Formation Evaluation

