



FILE NO: CH136065	COMPANY LARAMIE ENERGY LLC
API NO: 05077103950000	WELL NICHOLS 0994-24-10W
	FIELD VEGA
	COUNTY MESA STATE COLORADO

Ver. 4.10	LOCATION: SHL: 2256' FNL & 2787' FWL BHL: 2328' FNL & 1550' FWL SEC <u>24</u> TWP <u>9 S</u> RGE <u>94 W</u>	OTHER SERVICES RAL
-----------	---	-----------------------

PERMANENT DATUM LOG MEASURED FROM DRILL. MEAS. FROM	GL ELEVATION 7212 FT 24 FT ABOVE P.D. KB 7212 FT	ELEVATIONS: KB 7236 FT DF GL 7212 FT
---	--	---

DATE	26-Apr-2018
RUN	2
TRIP	1
SERVICE ORDER	US136065
DEPTH DRILLER	7435 FT
DEPTH LOGGER	7398 FT
BOTTOM LOGGED INTERVAL	7398 FT
TOP LOGGED INTERVAL	2010 FT
TIME STARTED	11:30
TIME FINISHED	17:30
OPERATOR RIG TIME	6 HRS
TYPE OF FLUID IN HOLE	WATER
FLUID DENSITY	NA
FLUID SALINITY	NA
FLUID LEVEL	104 FT
LOGGED CEMENT TOP	2990 FT
WELLHEAD PRESSURE	0 PSI
MAXIMUM HOLE DEVIATION	NA
NOMINAL LOGGING SPEED	15 FMIN
MAX. RECORDED TEMP.	224 DEGF
REFERENCE LOG	BAKER HUGHES RAL
REFERENCE LOG DATE	26-Apr-2018
EQUIP. NO.	ML-4291
LOCATION	GRAND JCT.
RECORDED BY	M. BAUKA
WITNESSED BY	NA

IN MAKING INTERPRETATIONS OF LOGS OUR EMPLOYEES WILL GIVE THE CUSTOMER THE BENEFIT OF THEIR BEST JUDGEMENT. BUT SINCE ALL INTERPRETATIONS ARE OPINIONS BASED ON INFERENCES FROM ELECTRICAL OR OTHER MEASUREMENTS, WE CANNOT, AND WE DO NOT GUARANTEE THE ACCURACY OR CORRECTNESS OF ANY INTERPRETATION. WE SHALL NOT BE LIABLE OR RESPONSIBLE FOR ANY LOSS, COST, DAMAGES, OR EXPENSES WHATSOEVER INCURRED OR SUSTAINED BY THE CUSTOMER RESULTING FROM ANY INTERPRETATION MADE BY ANY OF OUR EMPLOYEES.

REMARKS

RUN 2 TRIP 1: *2 OPERATIONS IN WELLBORE*

OPERATION 2: RPM/GR/CCL RUN IN PNC-3D

SJ: 5620' - 5639'

SJ: 6563' - 6582'

EQUIPMENT DATA

RUN	TRIP	TOOL	SERIES NO.	SERIAL NO.	POSITION
2	1	PCM	8250EA	11745584	FREE
2	1	TEL/CCL	8248ED	10183585	FREE
2	1	GR	2812LA	10274385	FREE
2	1	RPM	8281EA	10294755	FREE
2	1	RPM	8283PA	10066691	FREE
2	1	RPM	8281FA	10066992	FREE
2	1	TEMP	8255XA	166341	FREE

RPM MAIN PASS G-SAND

ECLIPS 7.0i ECLIPS General Release Rel 7.0i Thu Jun 08 20:36:10 CDT 2017

Patches: 3

Plotted: Thu Apr 26 19:14:31 2018

PARAMETER AND FILTER SUMMARY REPORT

FILE: /dat1a/LARAMIE_NICHOLS_0994_24_10W/p354h05.prm
 LOGGING MODE: DEPTH DIRECTION: UP
 TOP DEPTH: 2000.325 ft BOTTOM DEPTH: 2645.436 ft

SYMMETRIC FILTER

MEASUREMENT TYPE	PARAMETER	VALUE	UNITS	INTERVAL (ft)	
GR	FILTER ()	medium (1)		TOP	BOTTOM

RPM PROCESSING

MEASUREMENT TYPE	PARAMETER	VALUE	UNITS	INTERVAL (ft)	
PNC Parameters	BOREHOLE CONTENTS	FLUID		TOP	BOTTOM
	OPEN/CASED HOLE	CASED HOLE		"	"
	BOREHOLE SIZE	7.87	in	"	"
	LARGEST CASING OD	4.50	in	"	"
	MATRIX	SANDSTONE		"	"

CURVE DESCRIPTION REPORT

CURVE NAME	CREATION DATE	CURVE DESCRIPTION
F1:CCL	N/A	CASING COLLAR LOCATOR
F1:GR	N/A	GAMMA RAY
F1:ISS	N/A	INELASTIC SHORT SPACE COUNT RATE
F1:LS	N/A	LONG SPACE COUNT RATE
F1:RATO	N/A	SHORT/LONG SPACE COUNT RATE RATIO
F1:RICS	N/A	SHORT SPACE INELASTIC TO CAPTURE COUNT RATE RATIO (ISS/CSS)
F1:SGFC	N/A	BOREHOLE AND DIFFUSION CORRECTED SIGMA
F1:SS	N/A	SHORT SPACE COUNT RATE

CURVE MEASURE POINT OFFSET

CURVE	OFFSET (ft)	CURVE	OFFSET (ft)	CURVE	OFFSET (ft)	CURVE	OFFSET (ft)
CCL	-25.00	ISS	-12.75	RATO	-12.75	SGFC	-12.75
GR	-22.75	LS	-12.75	RICS	-12.75	SS	-12.75

Presentation : SysA:/dat1a/LARAMIE_NICHOLS_0994_24_10W/0994-24-10W_RPM_MAIN_GS.fvpdf [5"/100' Scale]
 Plot Interval : 1978 - 2642 Feet

Data File 1 : F1 : SysA:/dat1a/LARAMIE_NICHOLS_0994_24_10W/0994-24-10W_RPM_MAIN_GS.xtf
 Created On : N/A
 Company : LARAMIE ENERGY LLC
 Well : NICHOLS 0994-24-10W
 Field : VEGA
 File Interval : 1977.25 - 2642.25 Feet
 OCT : p354h

GR BACKUP

GAMMA RAY [gr]

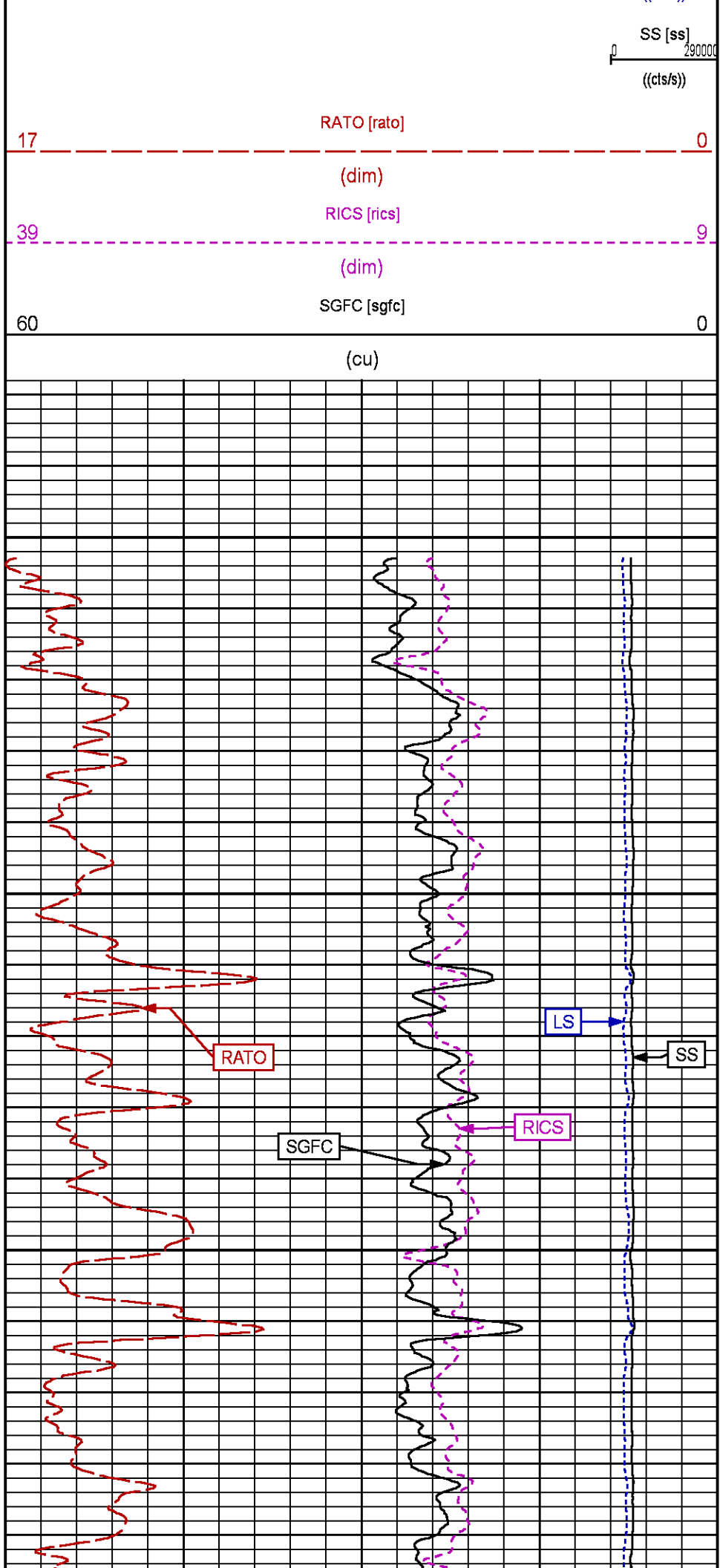
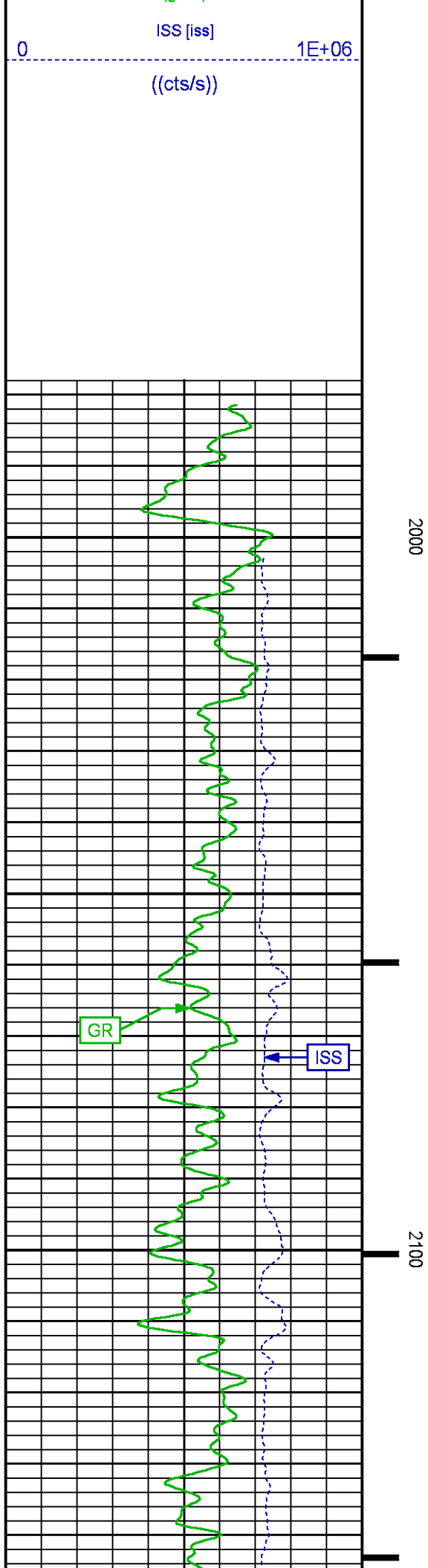
(gAPI)

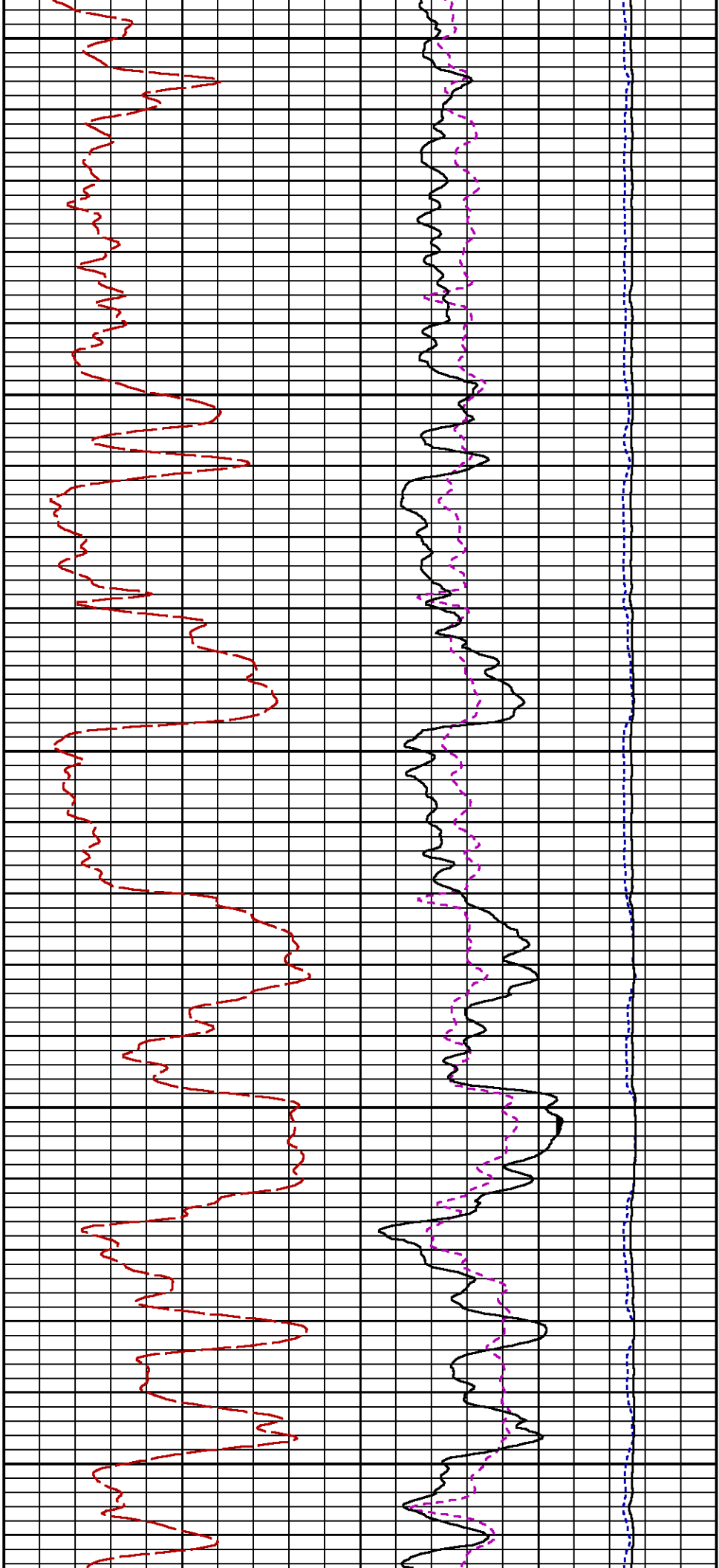
FEET

CCL
(mV)

LS [ls]

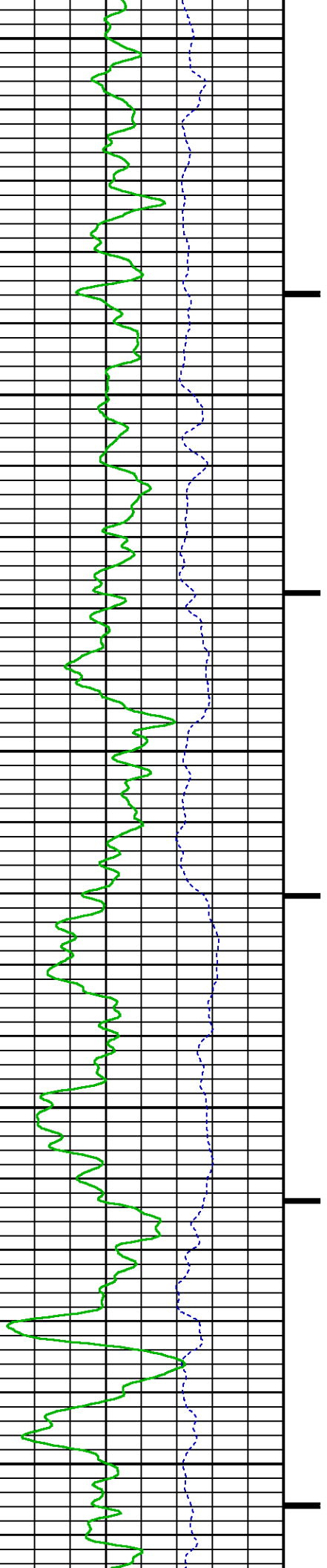
((cts/s))

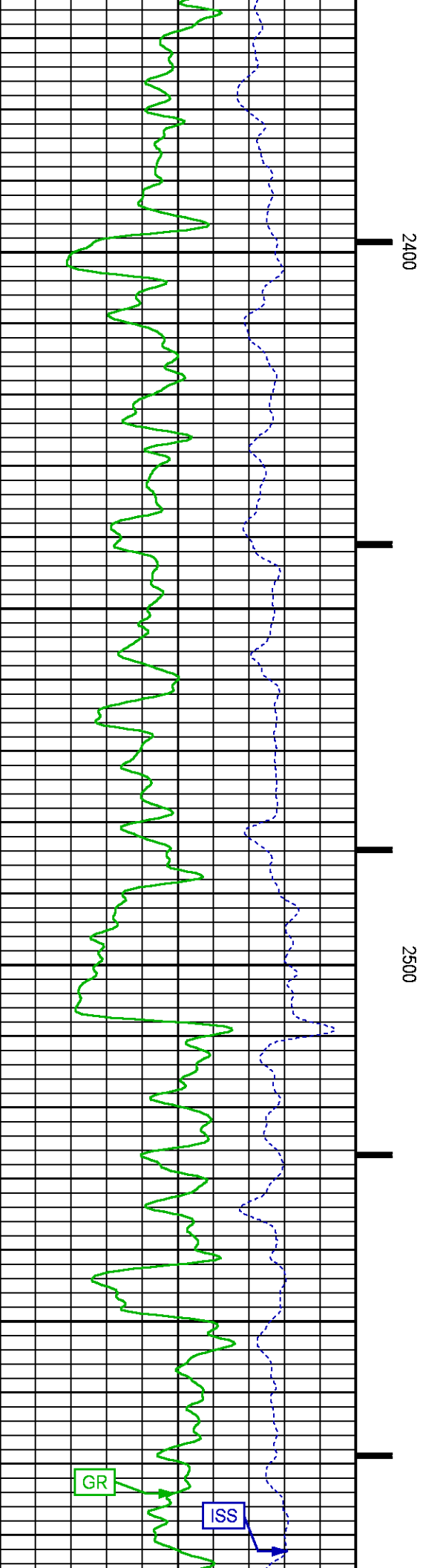
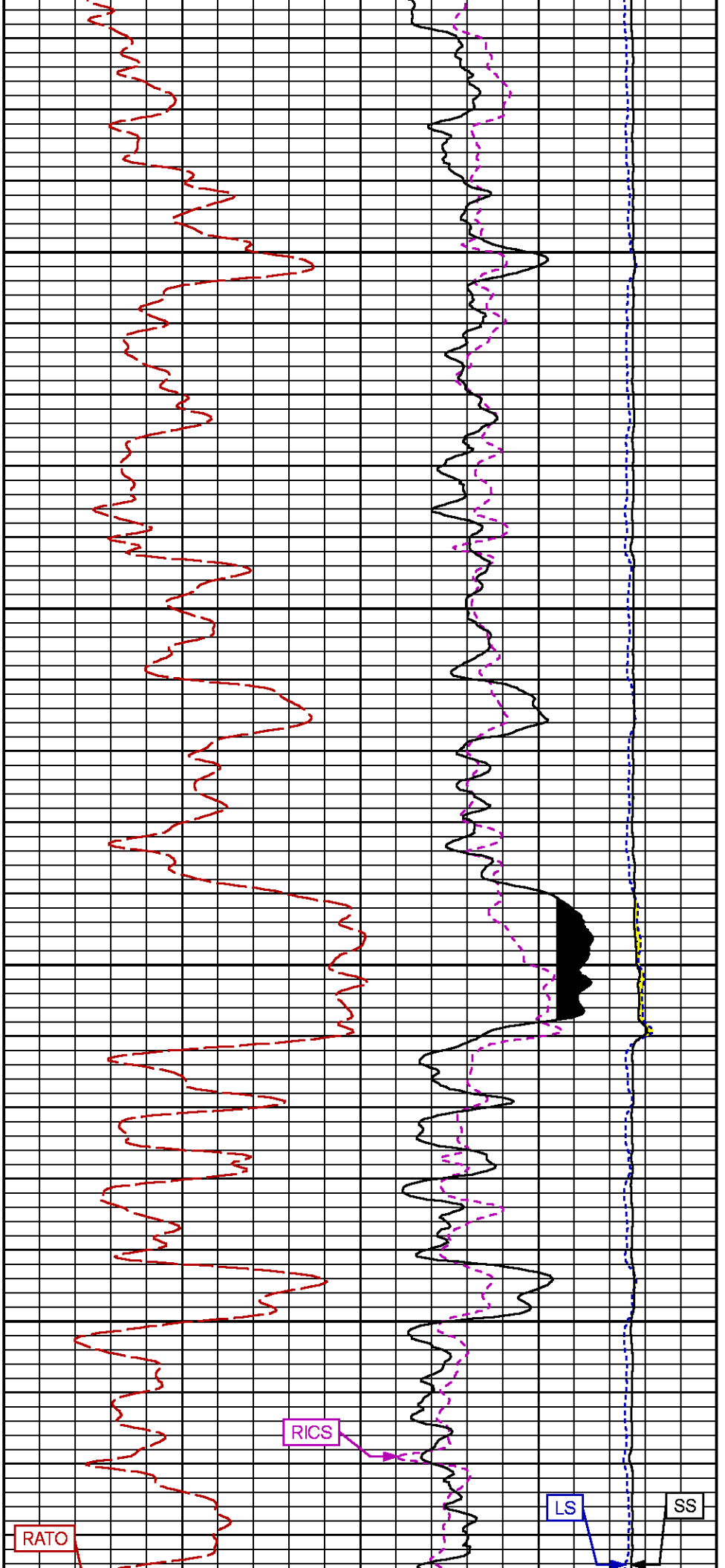


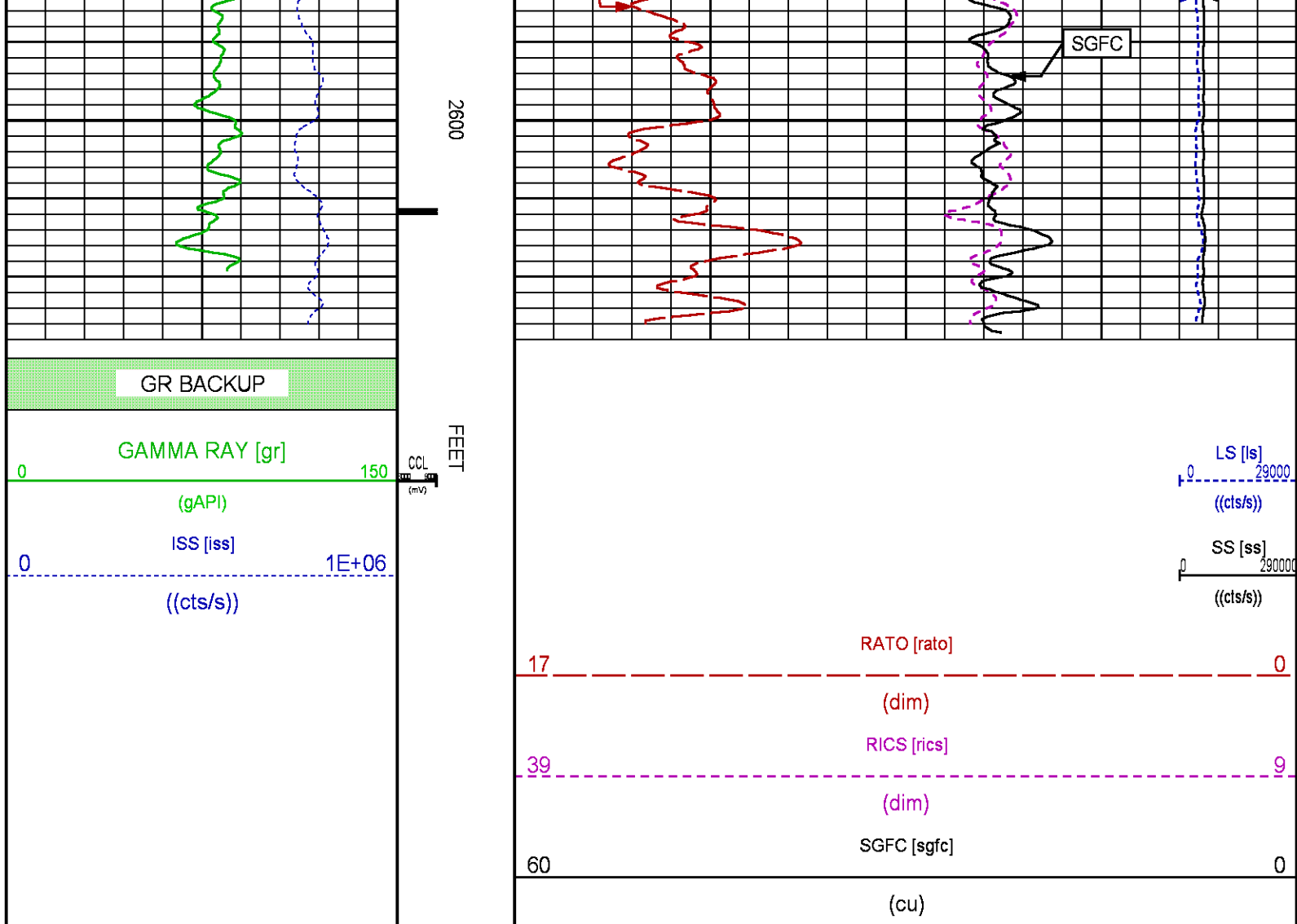


2200

2300







RPM MAIN PASS WILLIAMS FORK

ECLIPS 7.0i ECLIPS General Release Rel 7.0i Thu Jun 08 20:36:10 CDT 2017
Patches: 3

Plotted: Thu Apr 26 18:48:33 2018

PARAMETER AND FILTER SUMMARY REPORT

FILE: /dat1a/LARAMIE_NICHOLS_0994_24_10W/p354h02.prm
LOGGING MODE: DEPTH DIRECTION: UP
TOP DEPTH: 5702.735 ft BOTTOM DEPTH: 7408.854 ft

SYMMETRIC FILTER

MEASUREMENT TYPE	PARAMETER	VALUE	UNITS	INTERVAL (ft)
GR	FILTER ()	medium (1)		TOP BOTTOM

RPM PROCESSING

MEASUREMENT TYPE	PARAMETER	VALUE	UNITS	INTERVAL (ft)
PNC Parameters	BOREHOLE CONTENTS OPEN/CASED HOLE	FLUID CASED HOLE		TOP BOTTOM " "

BOREHOLE SIZE	7.87	in	"	"
LARGEST CASING OD	4.50	in	"	"
MATRIX	SANDSTONE			

CURVE DESCRIPTION REPORT

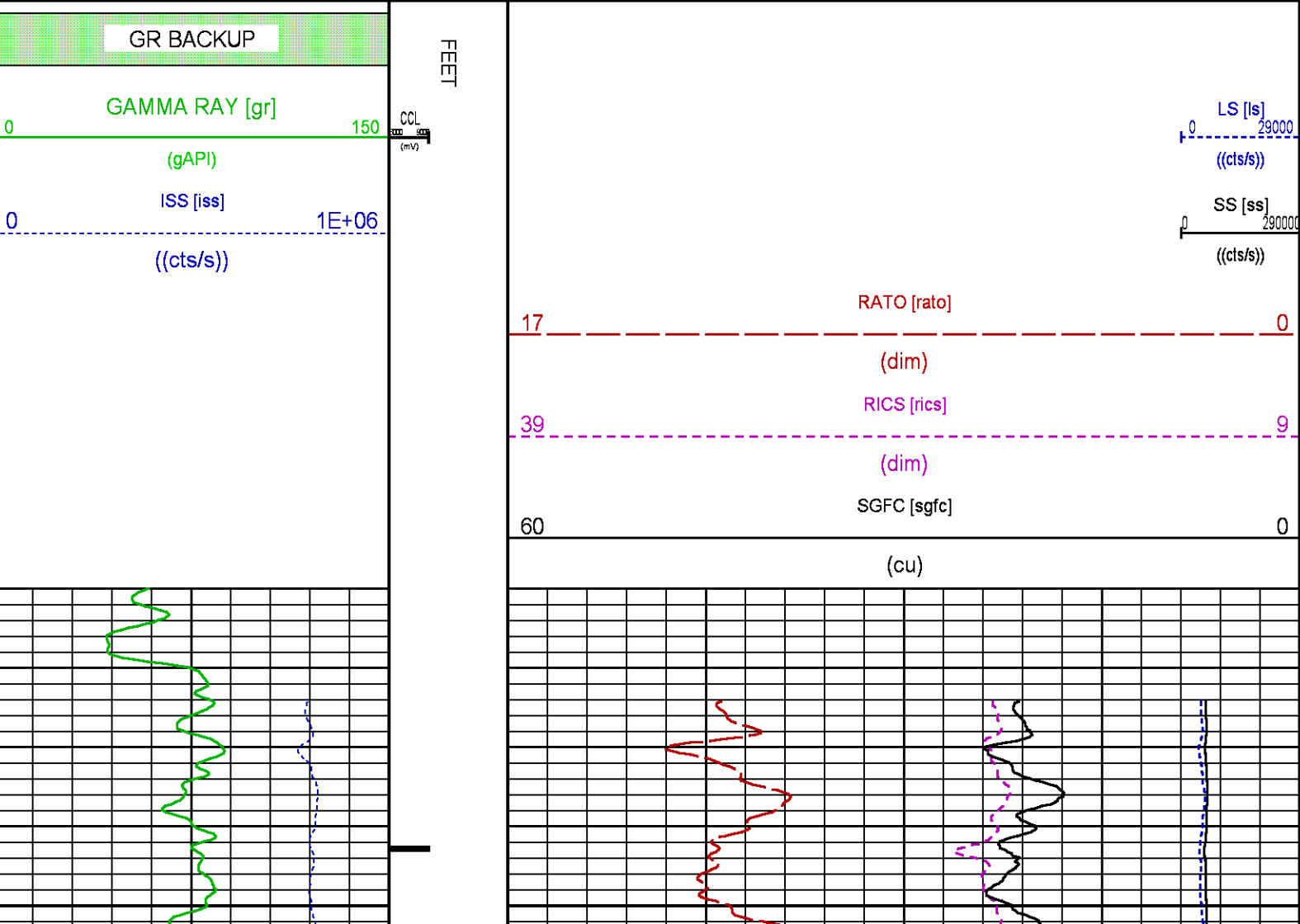
CURVE NAME	CREATION DATE	CURVE DESCRIPTION
F1:CCL	N/A	CASING COLLAR LOCATOR
F1:GR	N/A	GAMMA RAY
F1:ISS	N/A	INELASTIC SHORT SPACE COUNT RATE
F1:LS	N/A	LONG SPACE COUNT RATE
F1:RATO	N/A	SHORT/LONG SPACE COUNT RATE RATIO
F1:RICS	N/A	SHORT SPACE INELASTIC TO CAPTURE COUNT RATE RATIO (ISS/CSS)
F1:SGFC	N/A	BOREHOLE AND DIFFUSION CORRECTED SIGMA
F1:SS	N/A	SHORT SPACE COUNT RATE

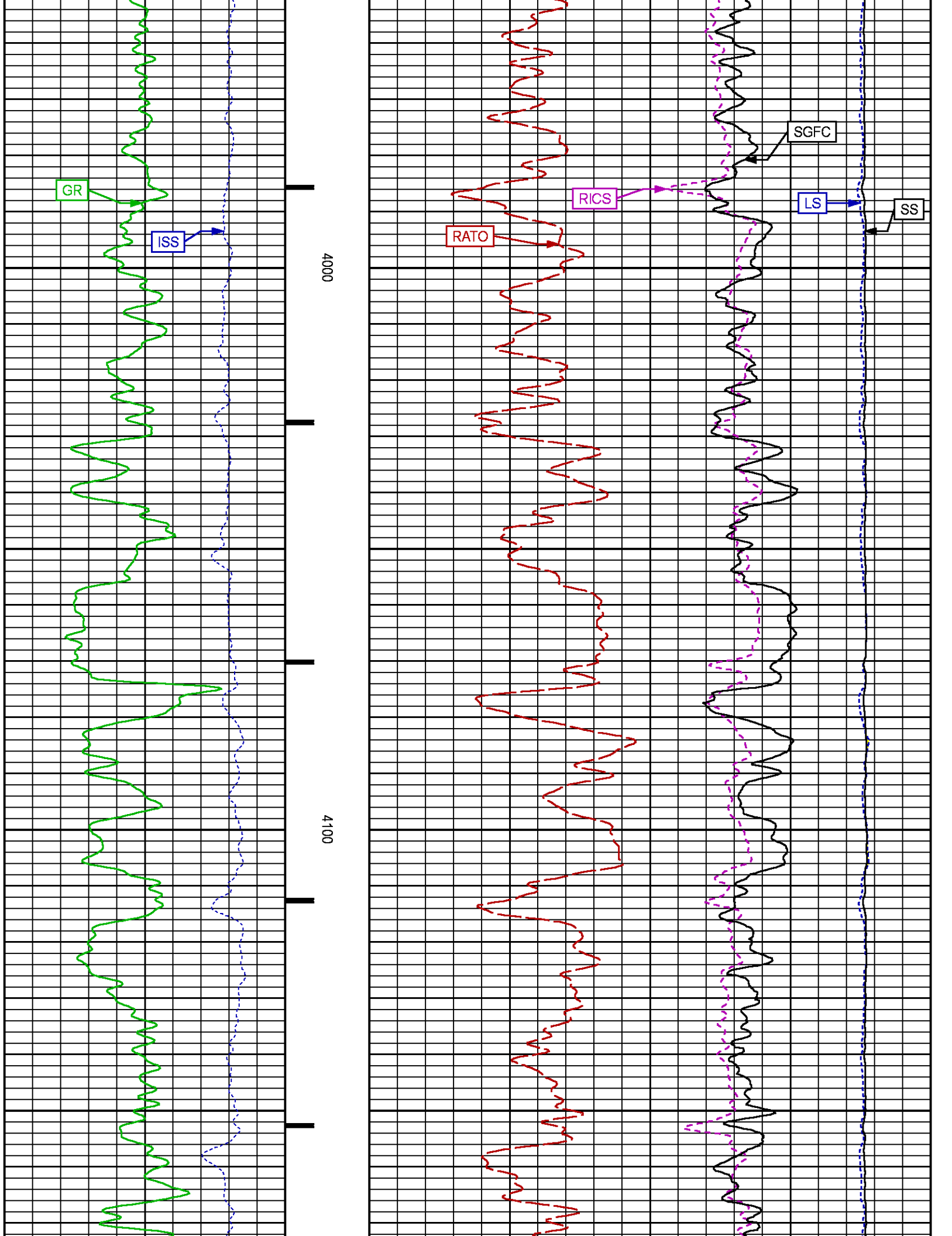
CURVE MEASURE POINT OFFSET

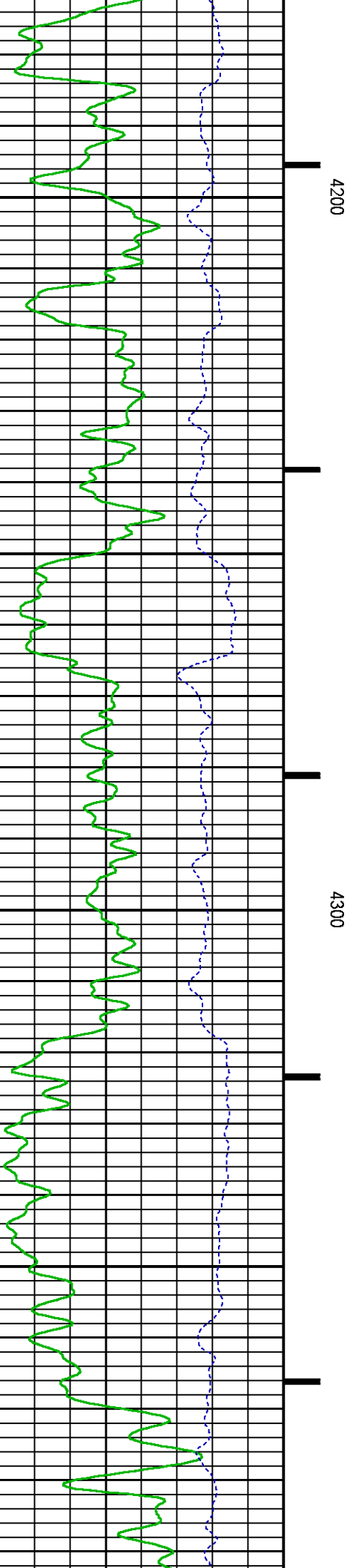
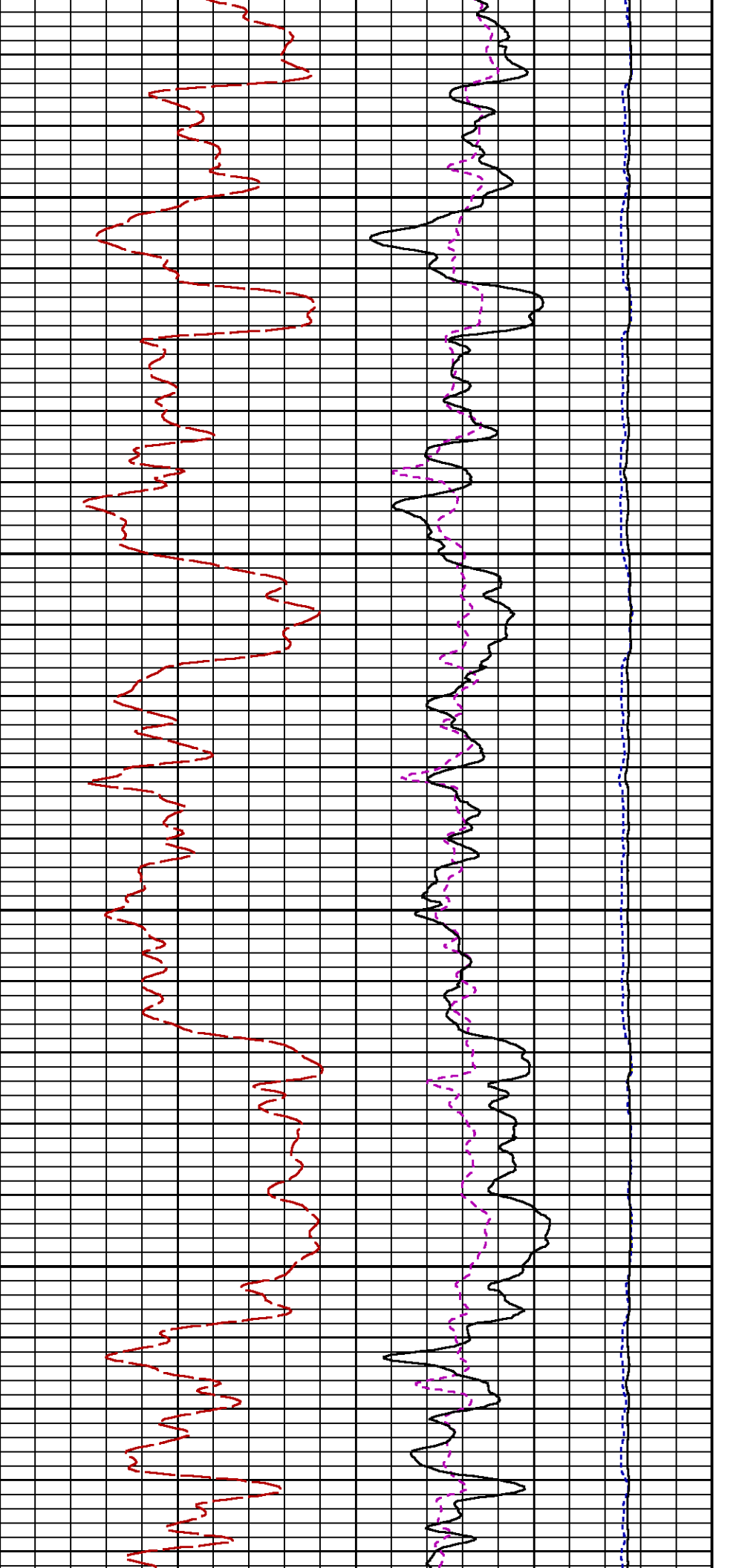
CURVE	OFFSET (ft)	CURVE	OFFSET (ft)	CURVE	OFFSET (ft)	CURVE	OFFSET (ft)
CCL	-25.00	ISS	-12.75	RATO	-12.75	SGFC	-12.75
GR	-22.75	LS	-12.75	RICS	-12.75	SS	-12.75

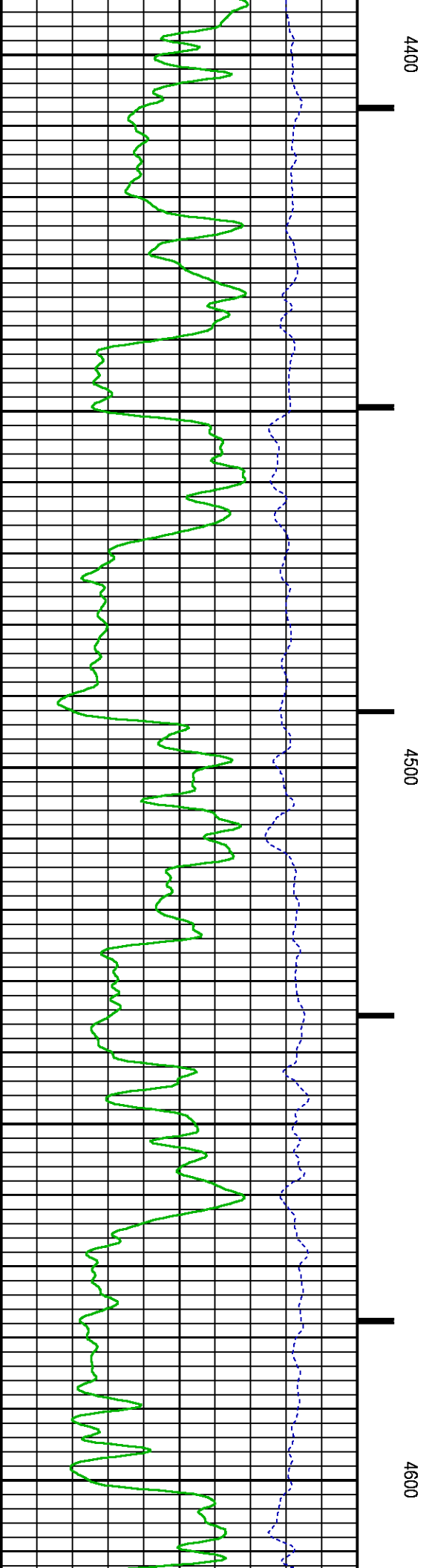
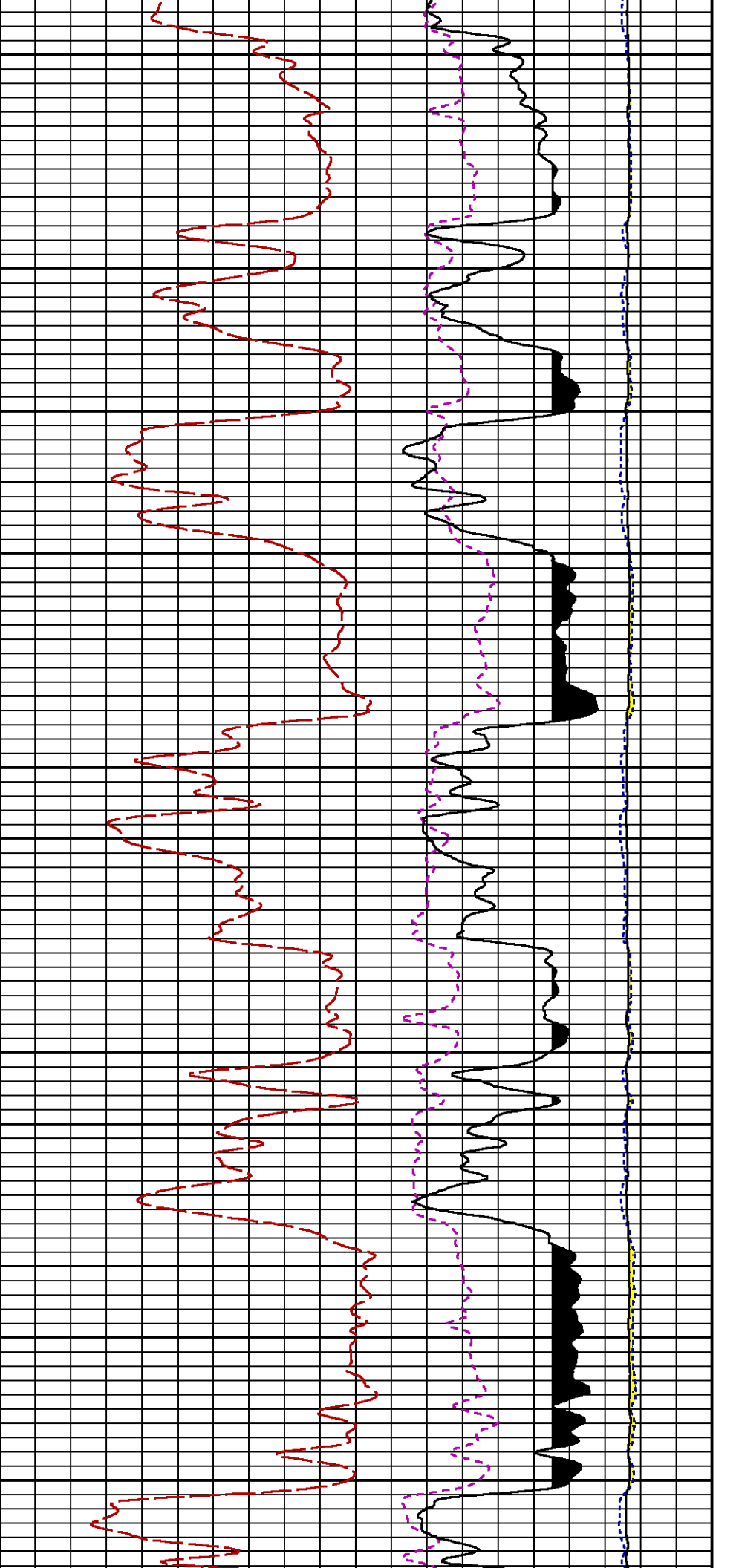
Presentation : SysA:/dat1a/LARAMIE_NICHOLS_0994_24_10W/0994-24-10W_RPM_MAIN_WF.fvpdf [5"/100' Scale]
Plot Interval : 3910 - 7407.5 Feet

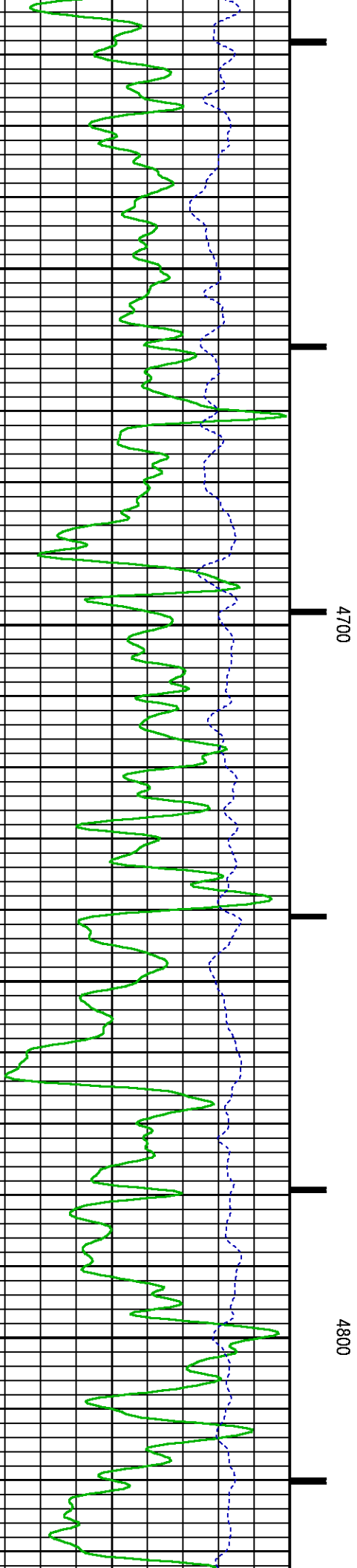
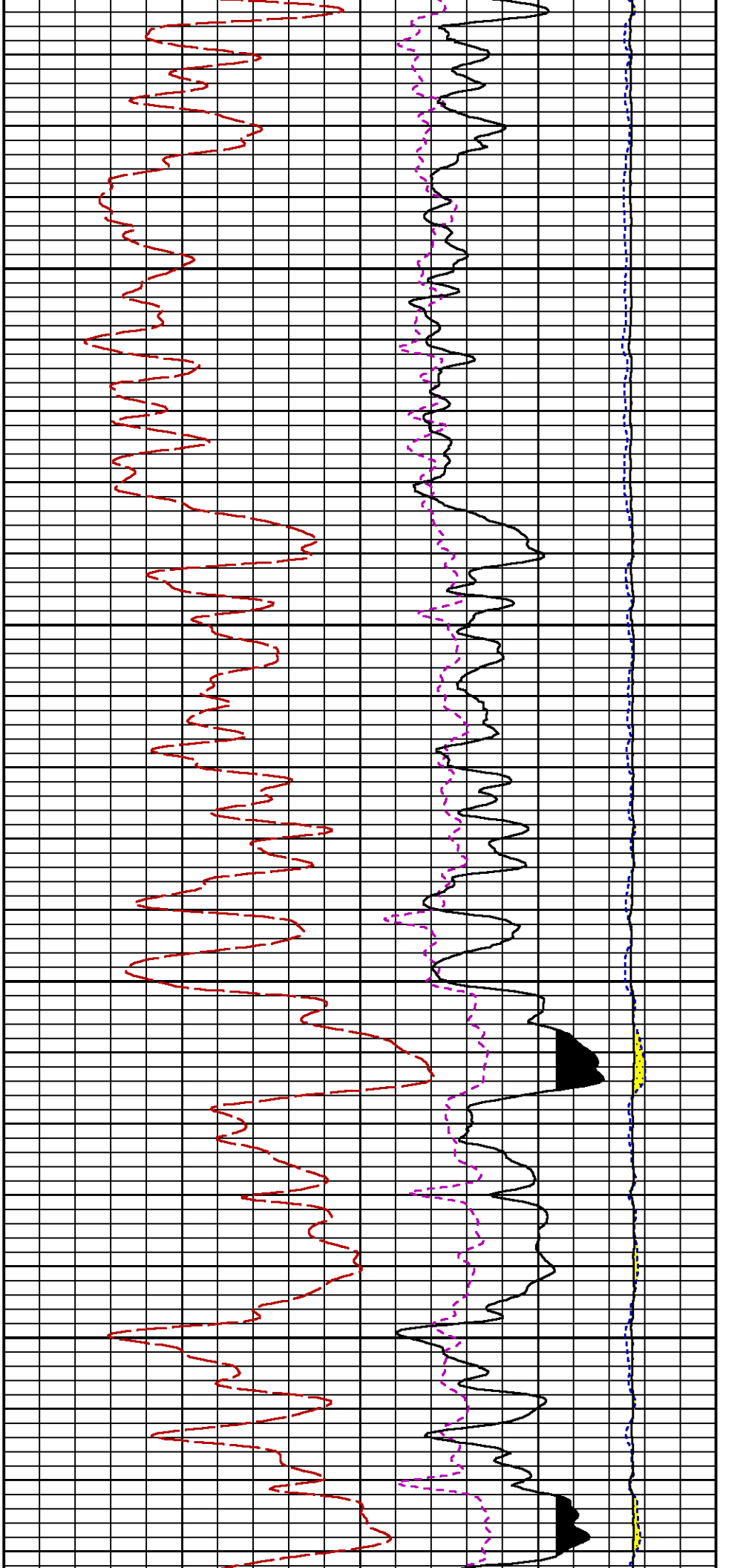
Data File 1 : F1 : SysA:/dat1a/LARAMIE_NICHOLS_0994_24_10W/0994-24-10W_RPM_MAIN_WF.xtf
Created On : N/A
Company : LARAMIE ENERGY LLC
Well : NICHOLS 0994-24-10W
Field : VEGA
File Interval : 3898.5 - 7407.5 Feet
OCT : p354h

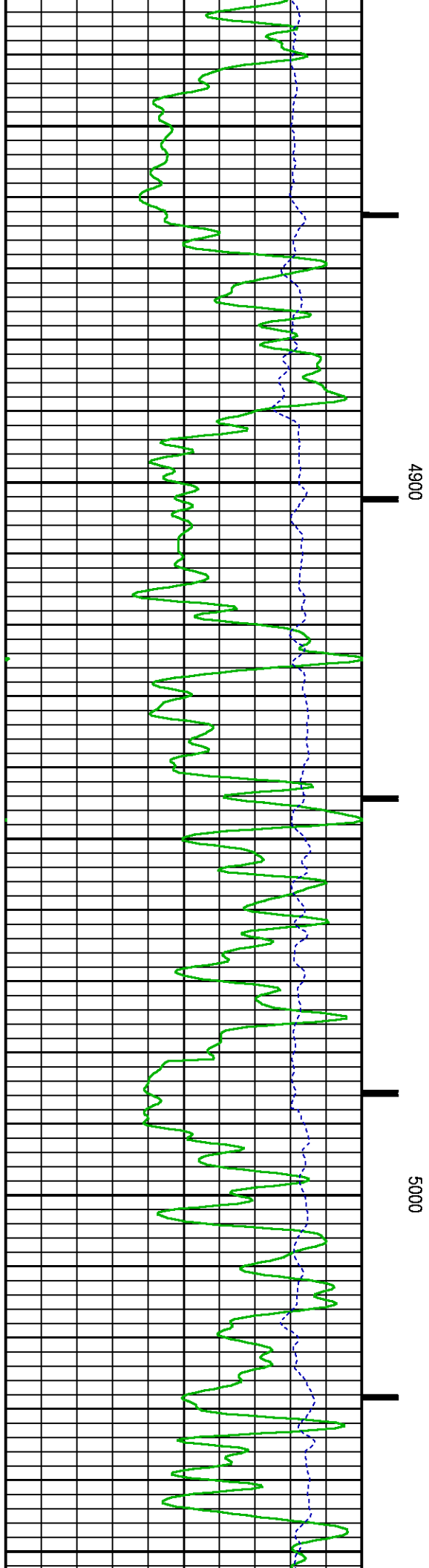
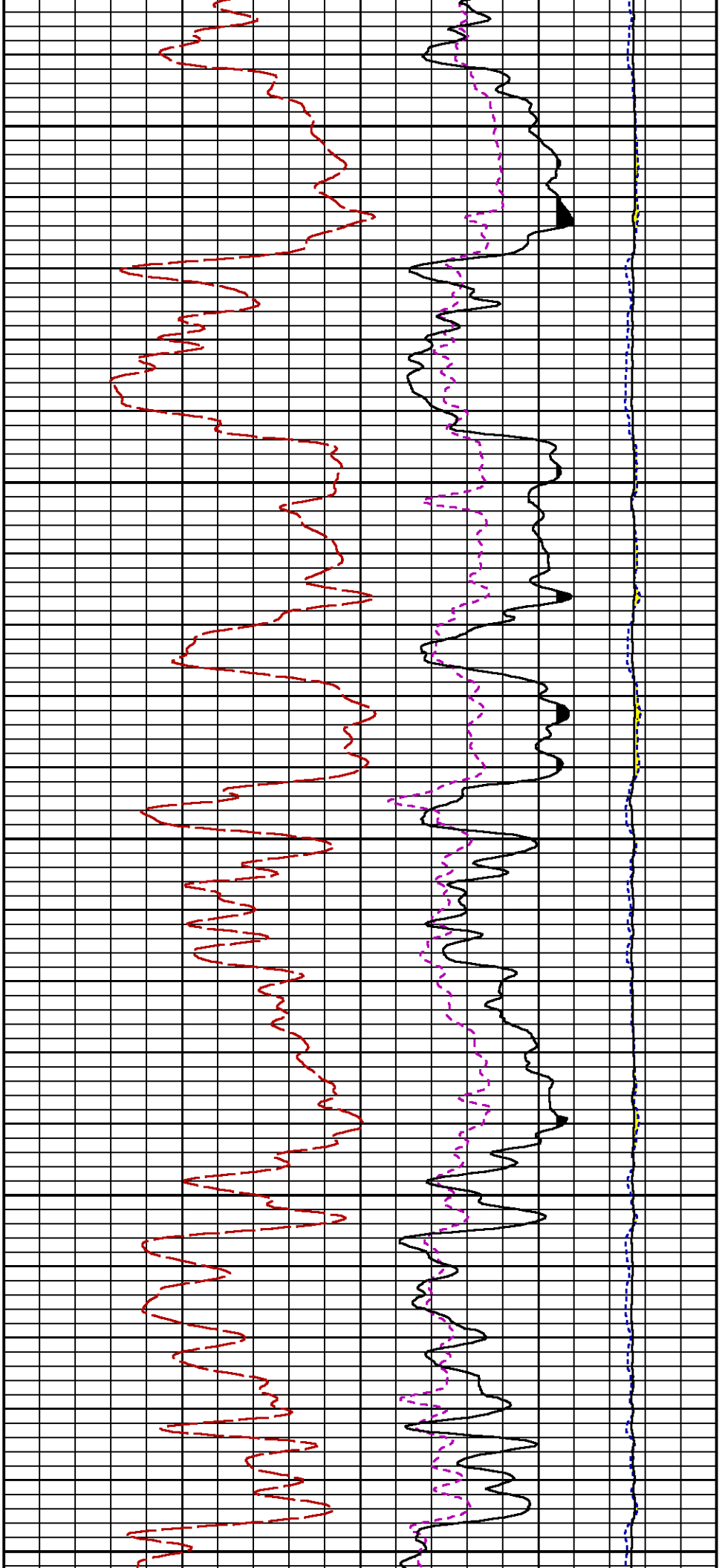


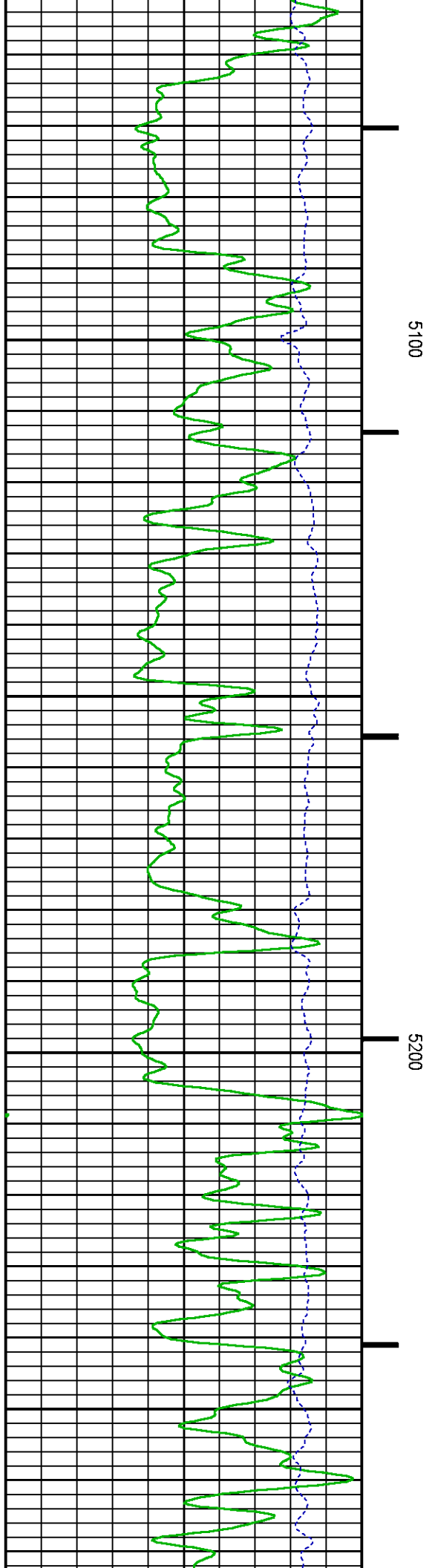
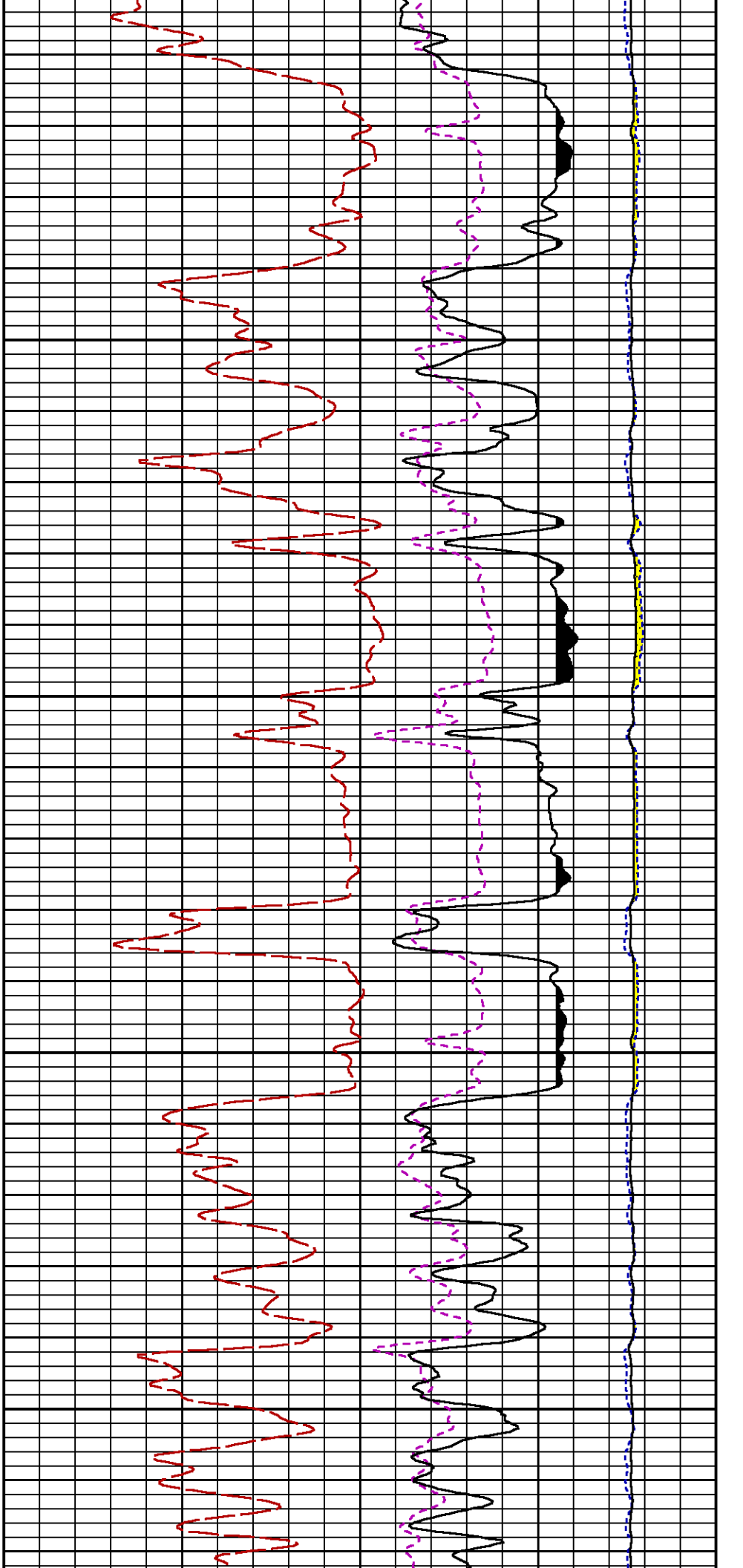


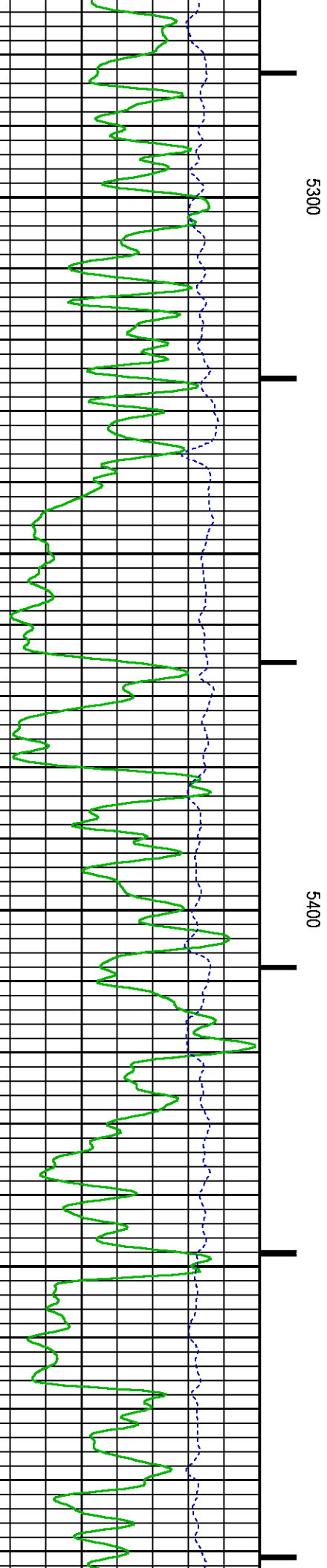
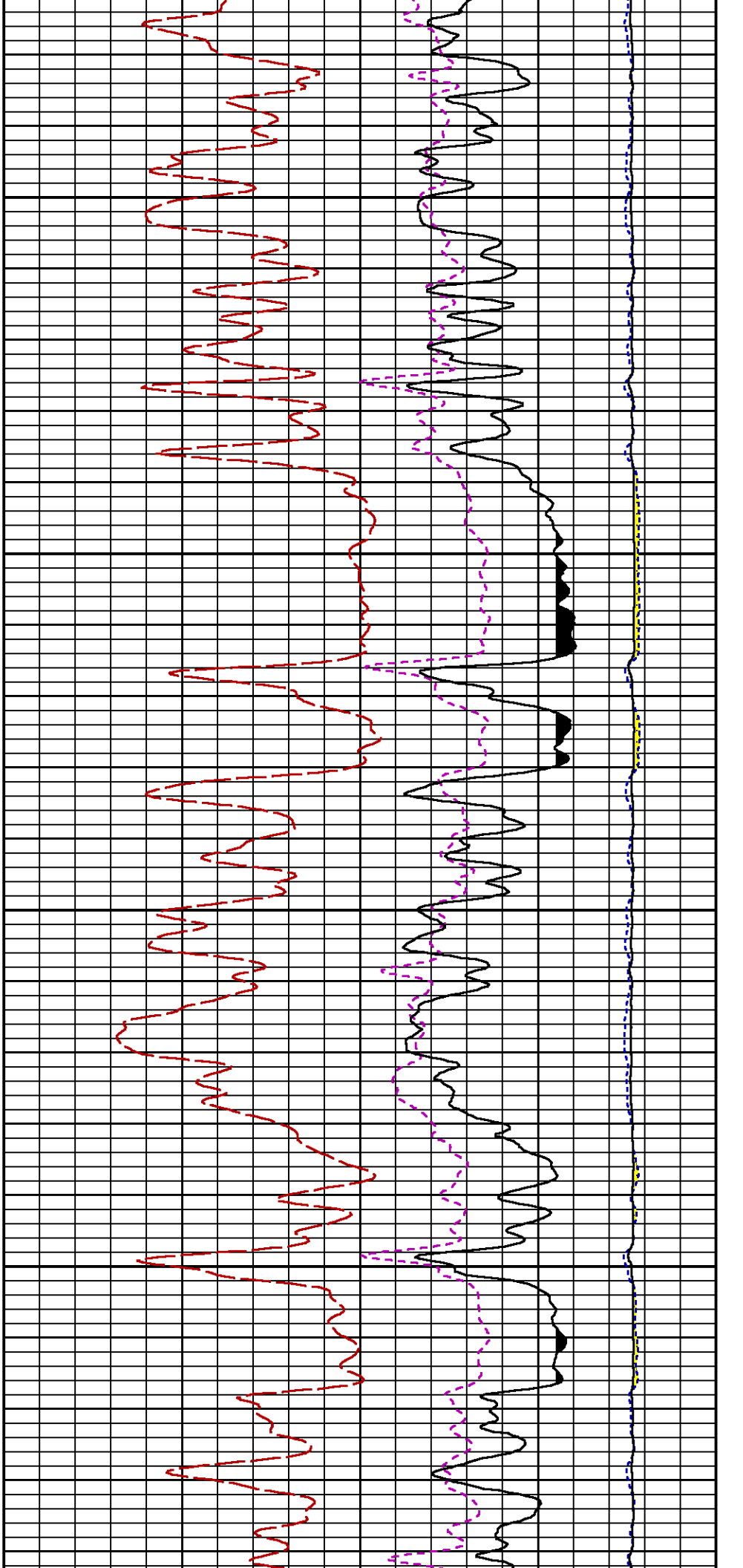


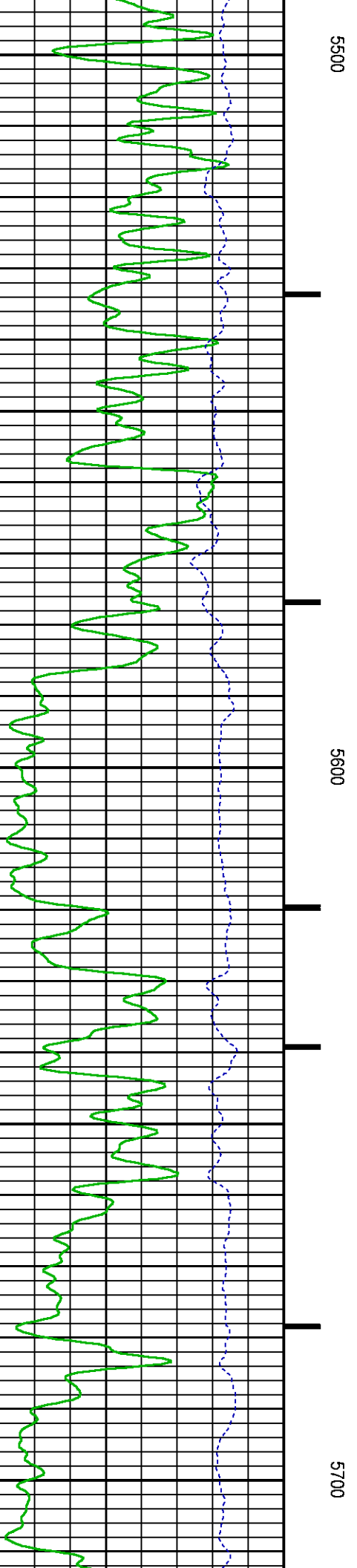
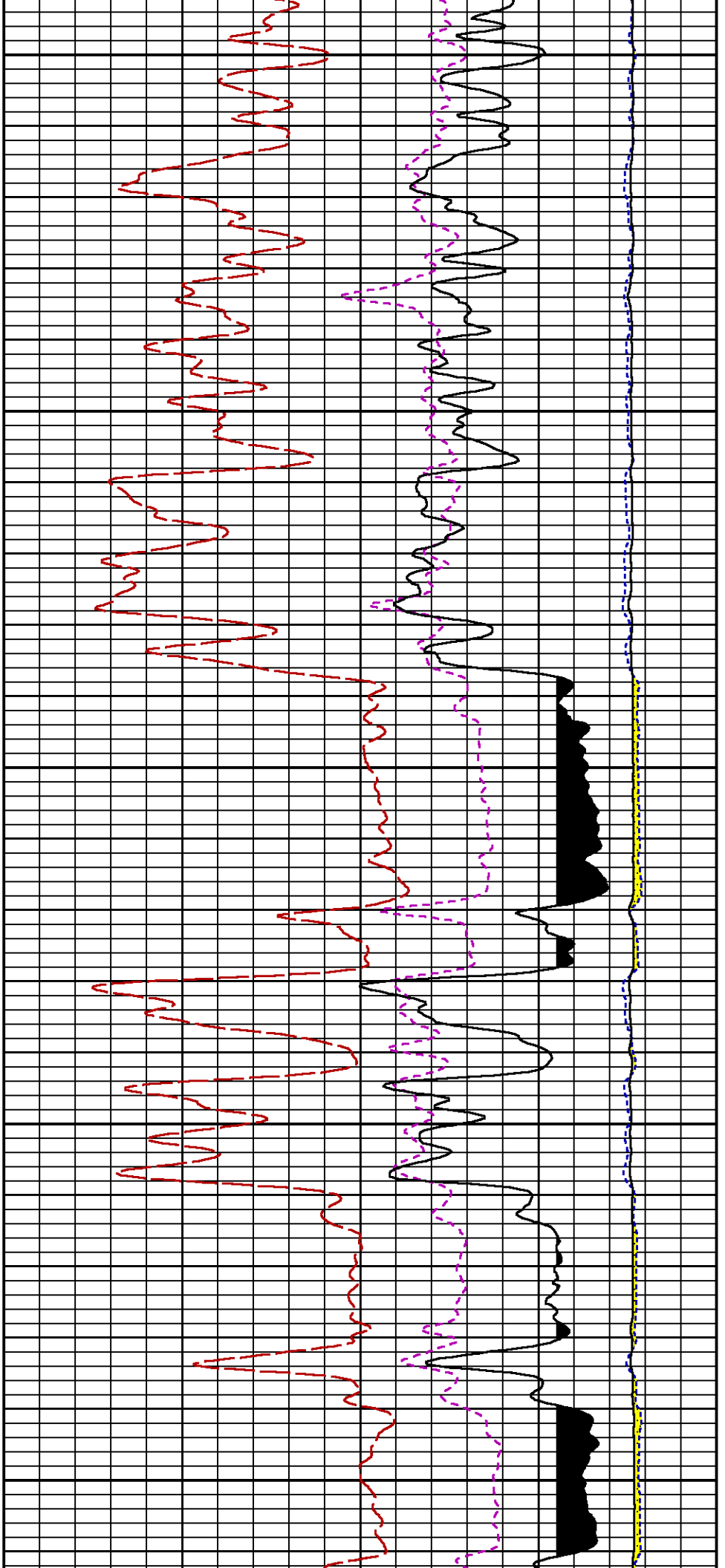


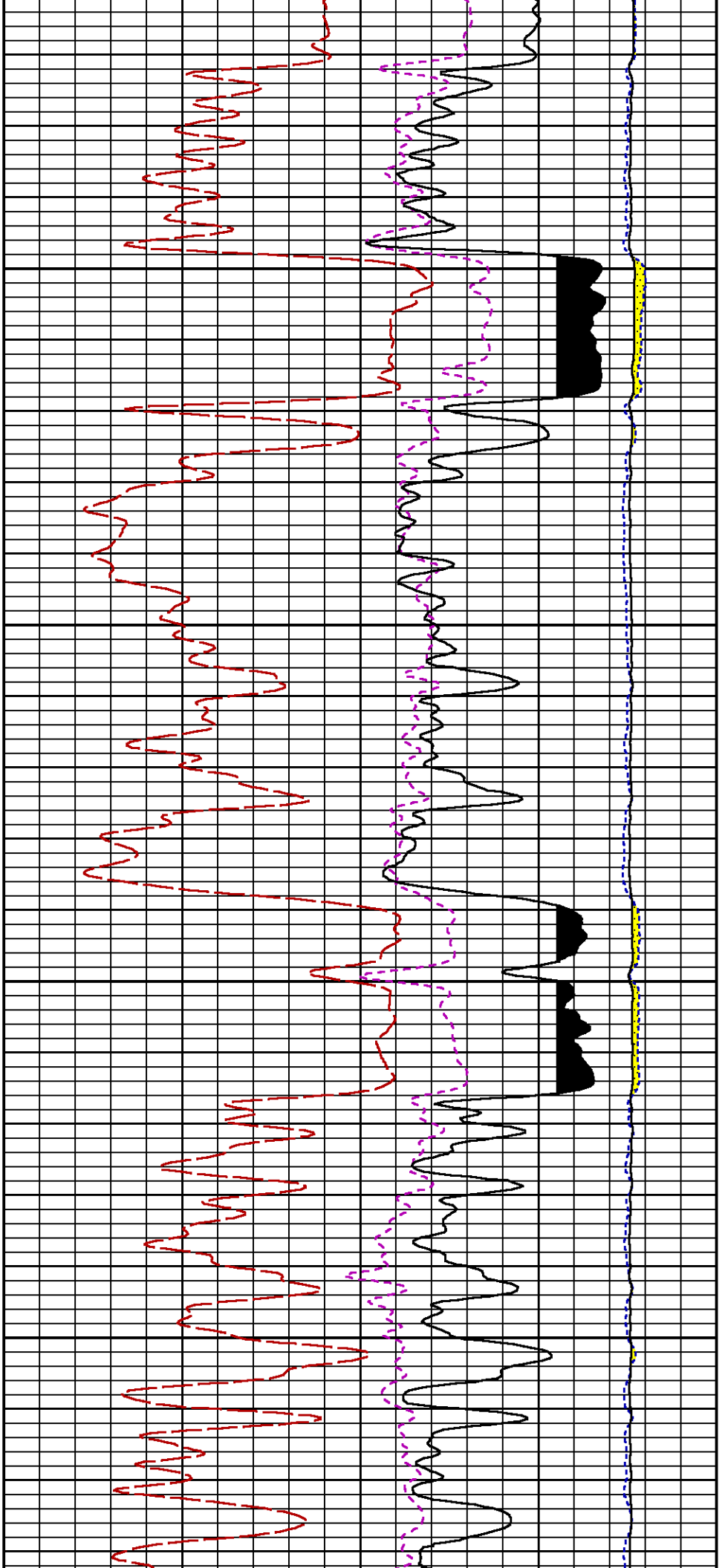






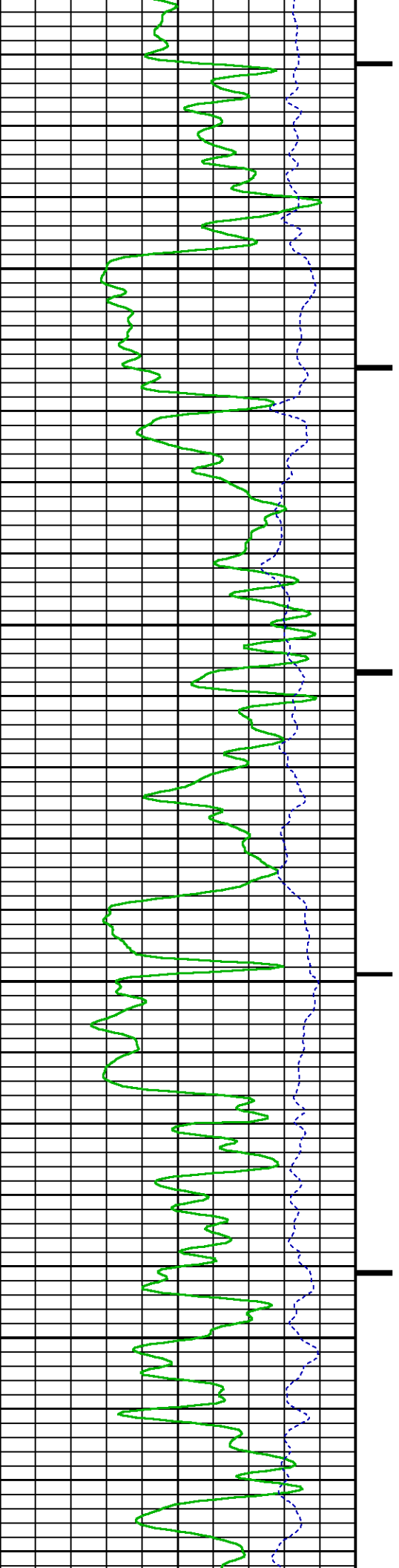


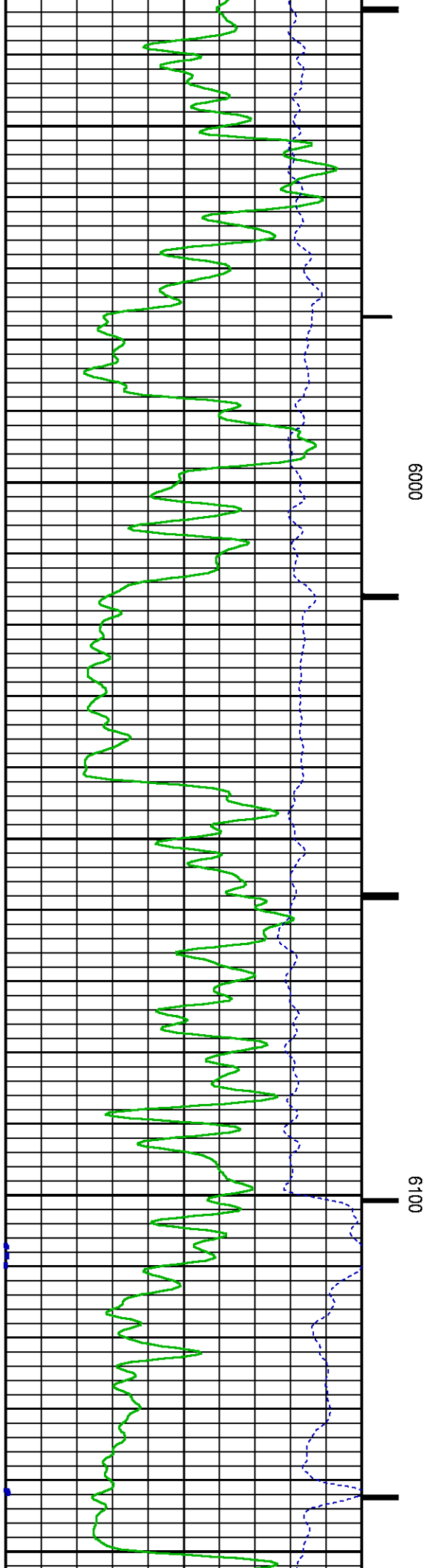
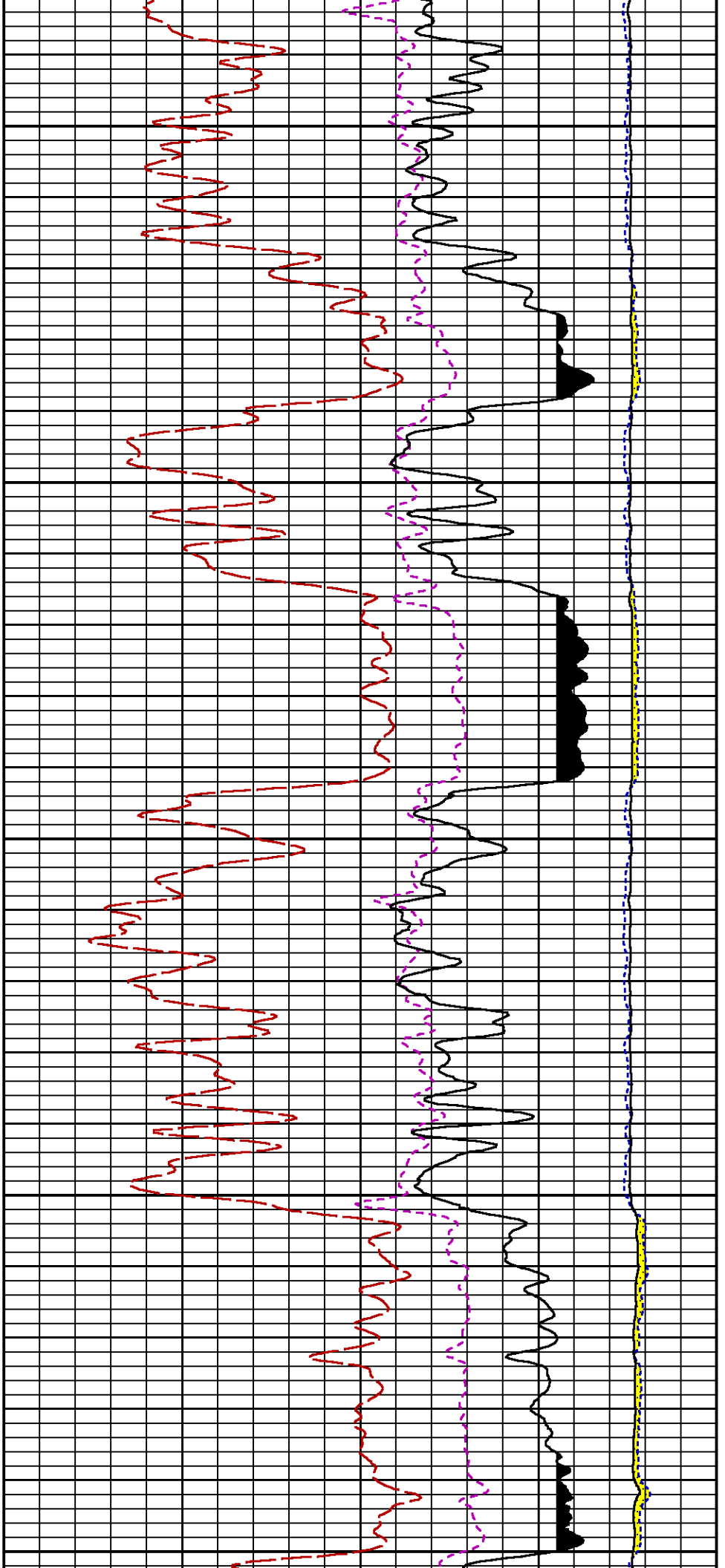


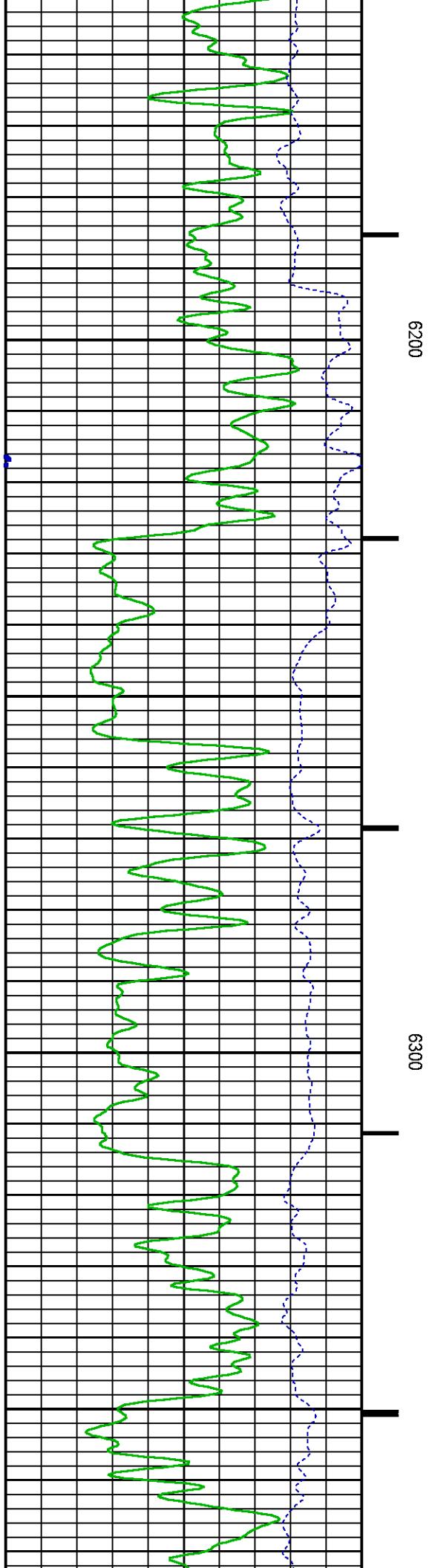
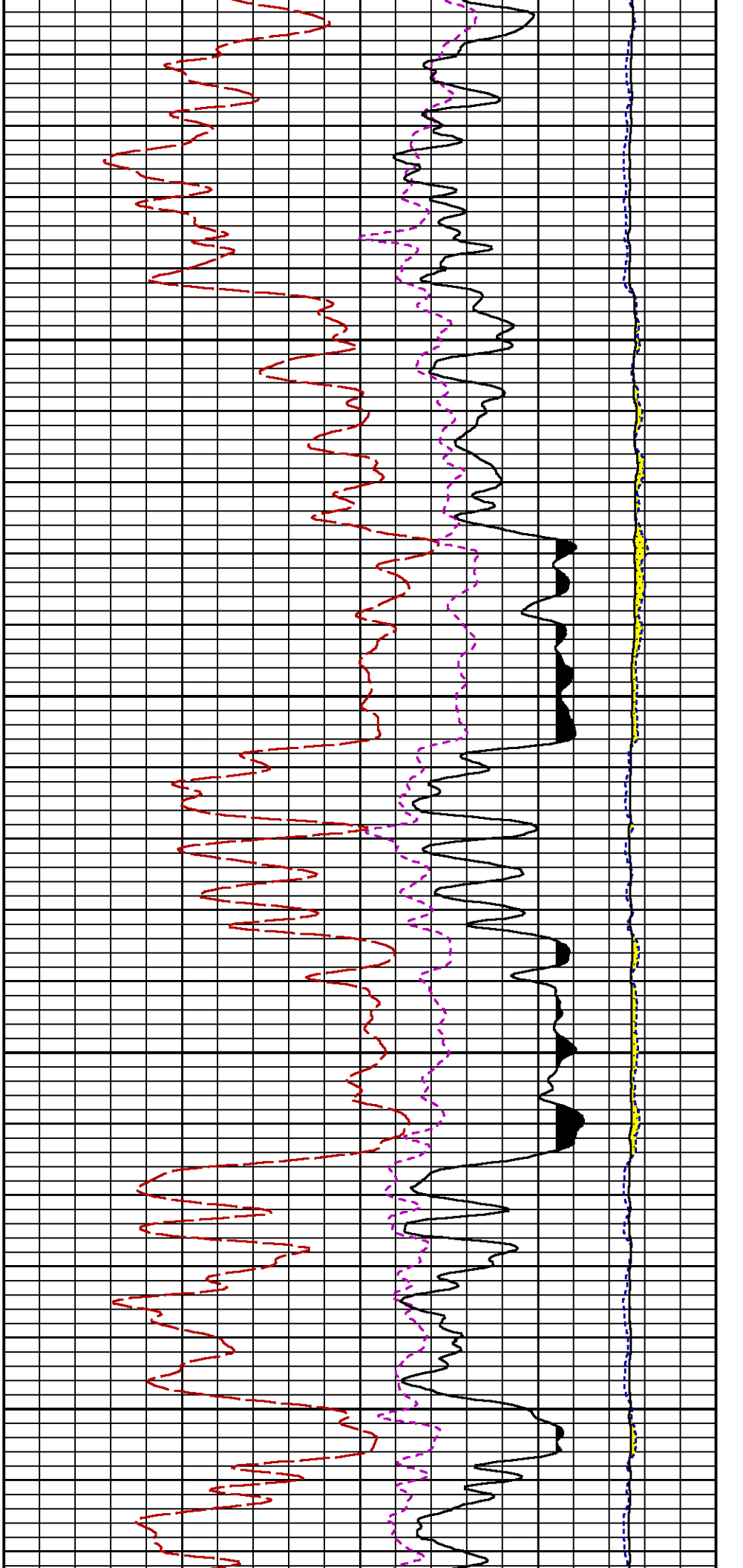


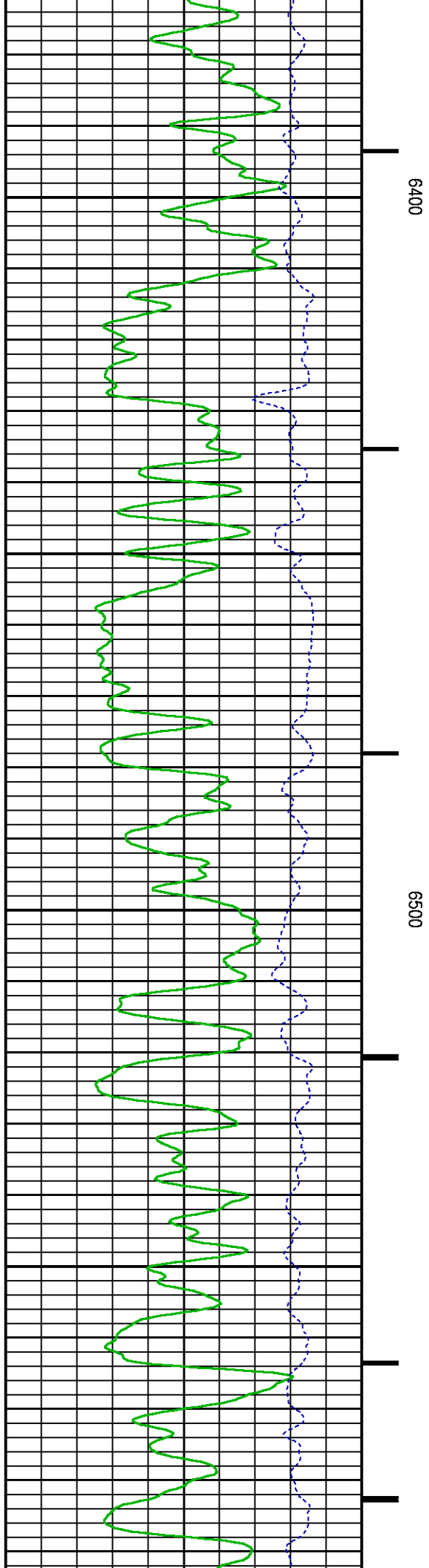
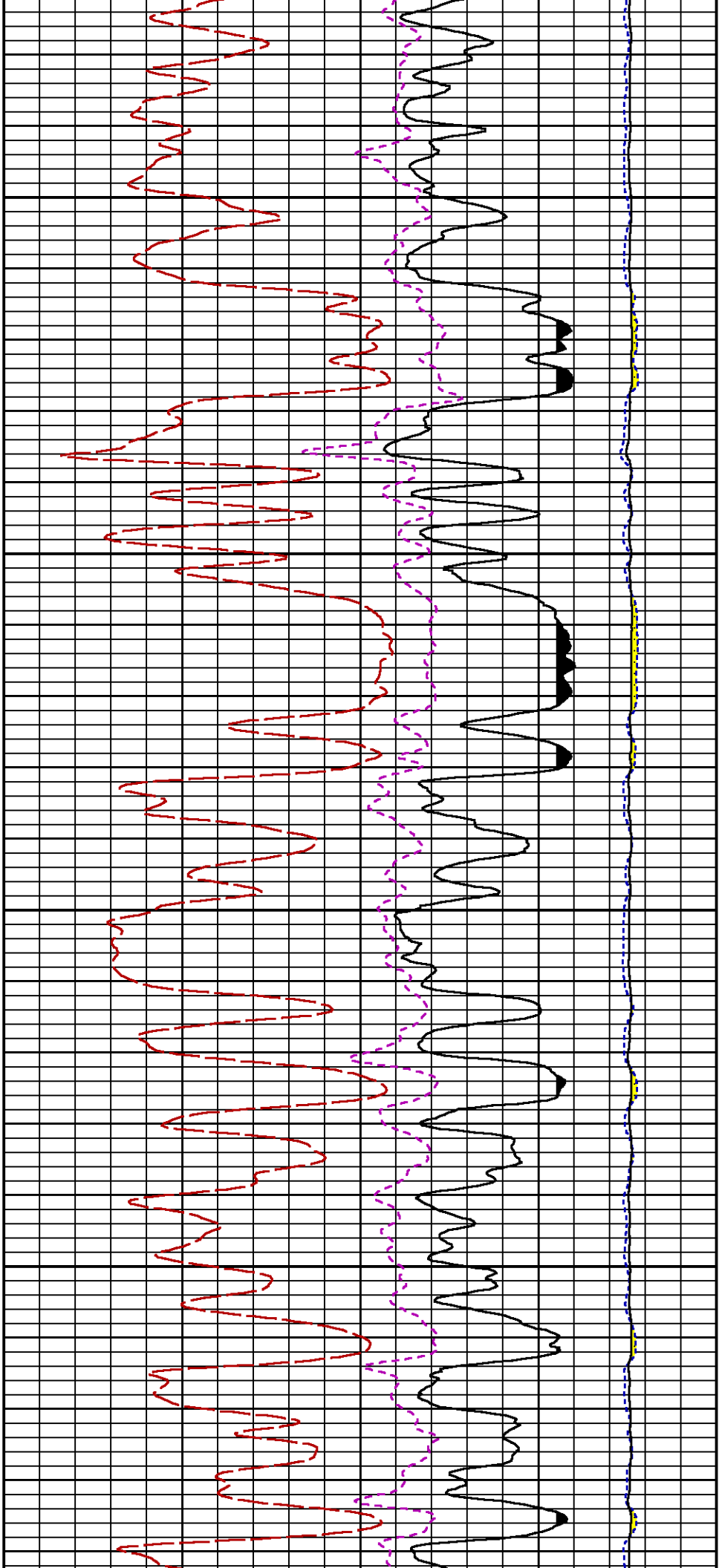
5800

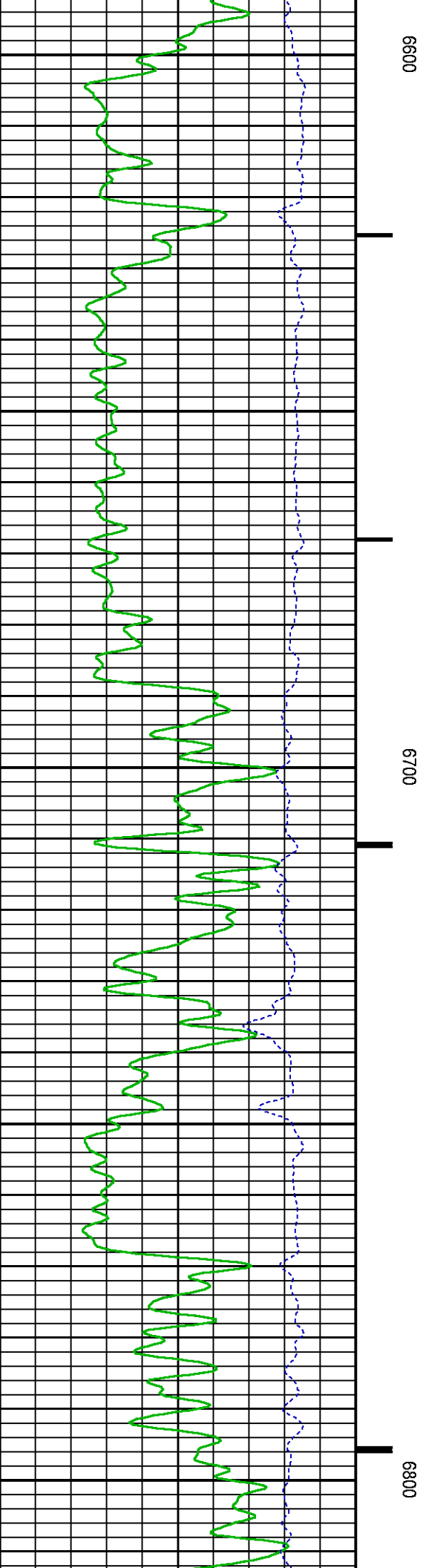
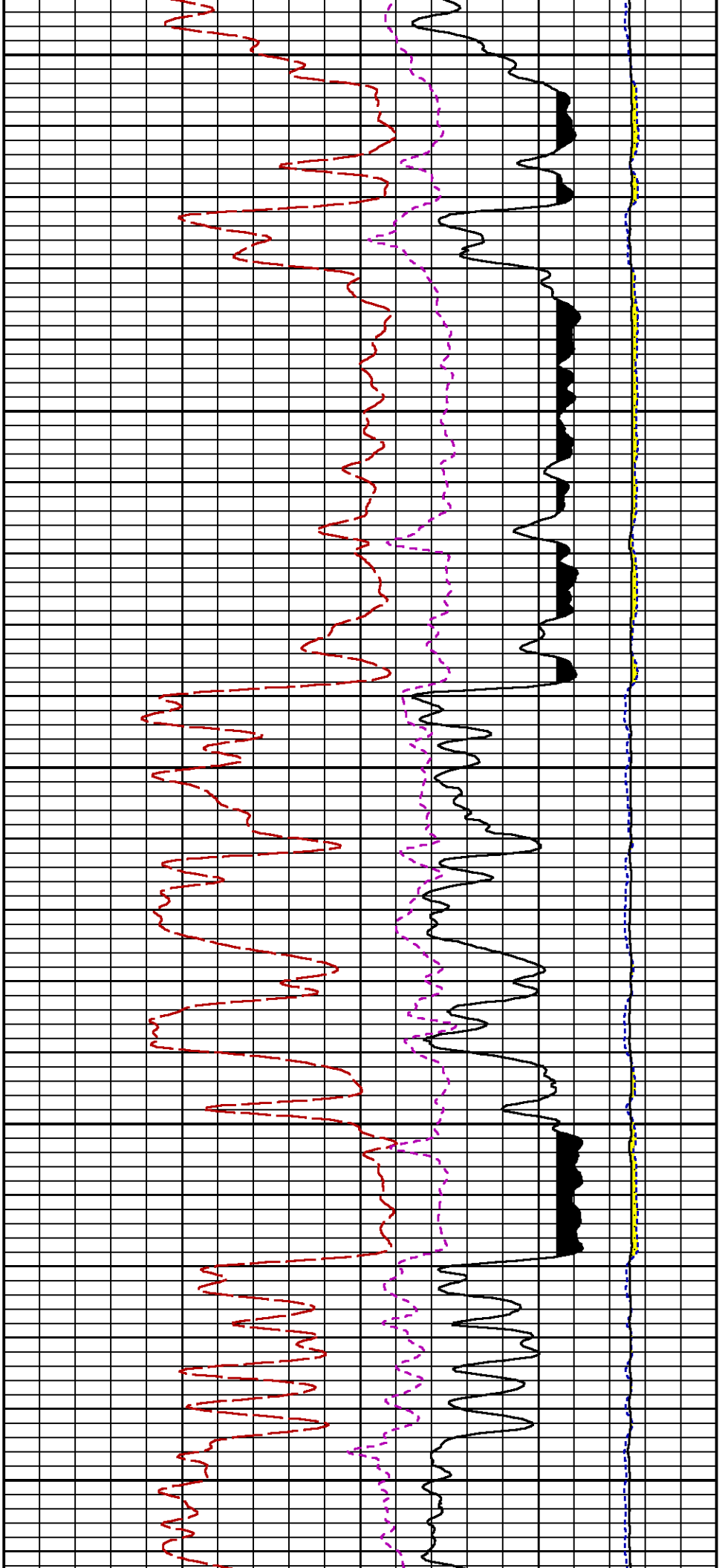
5900

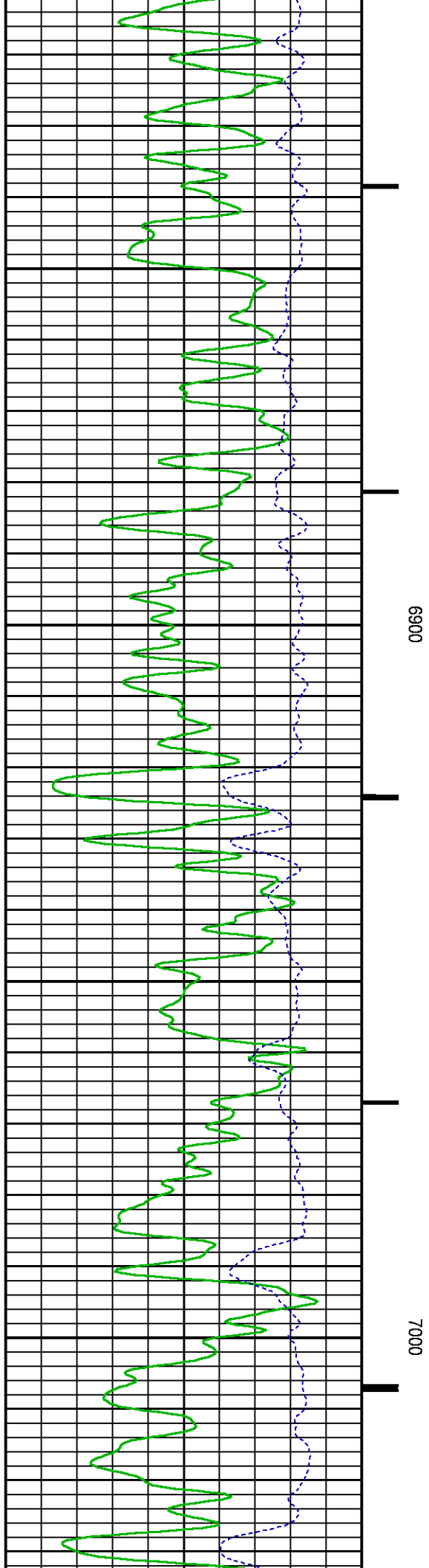
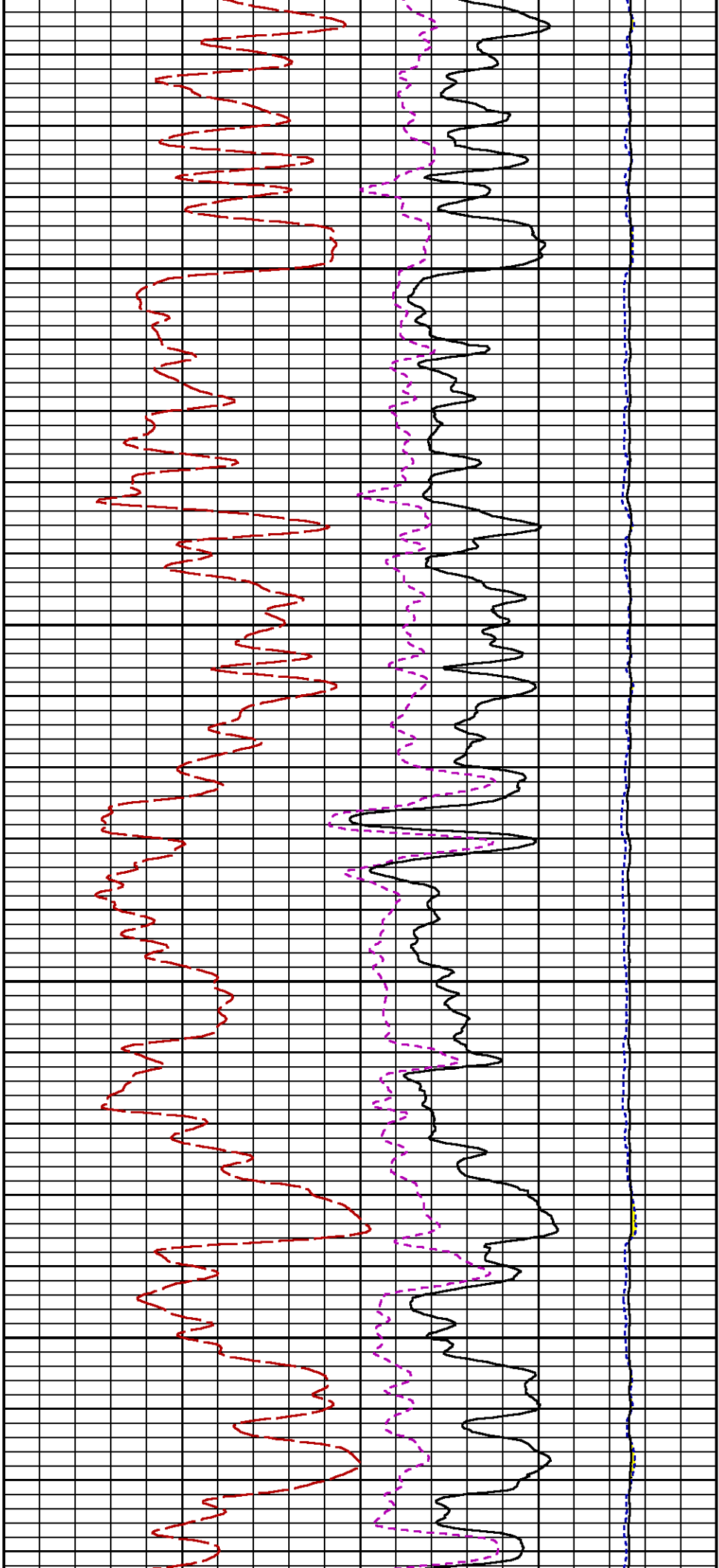


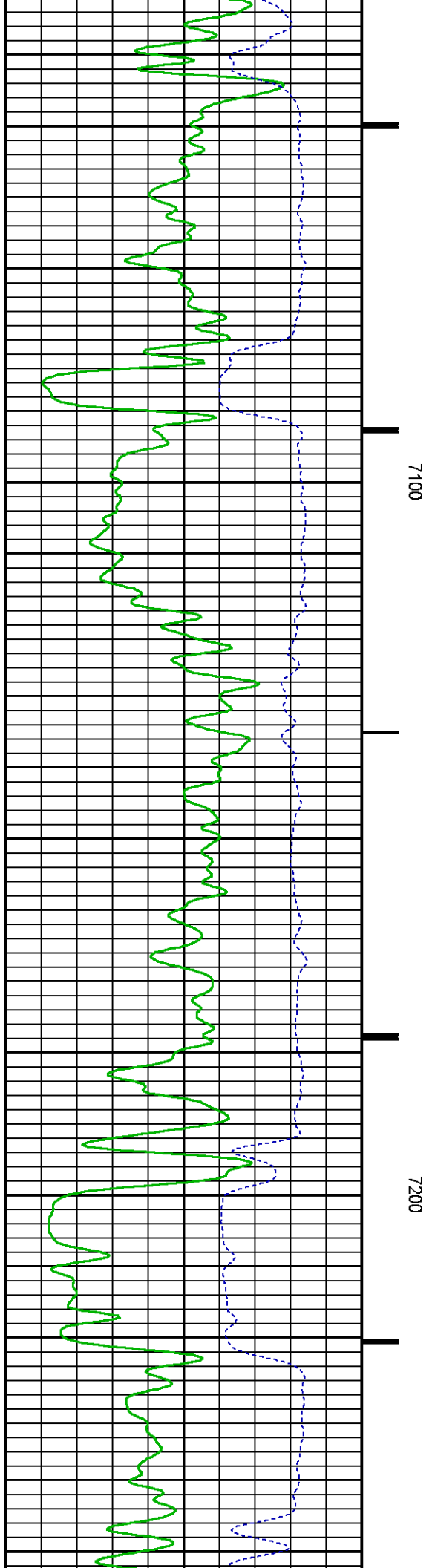
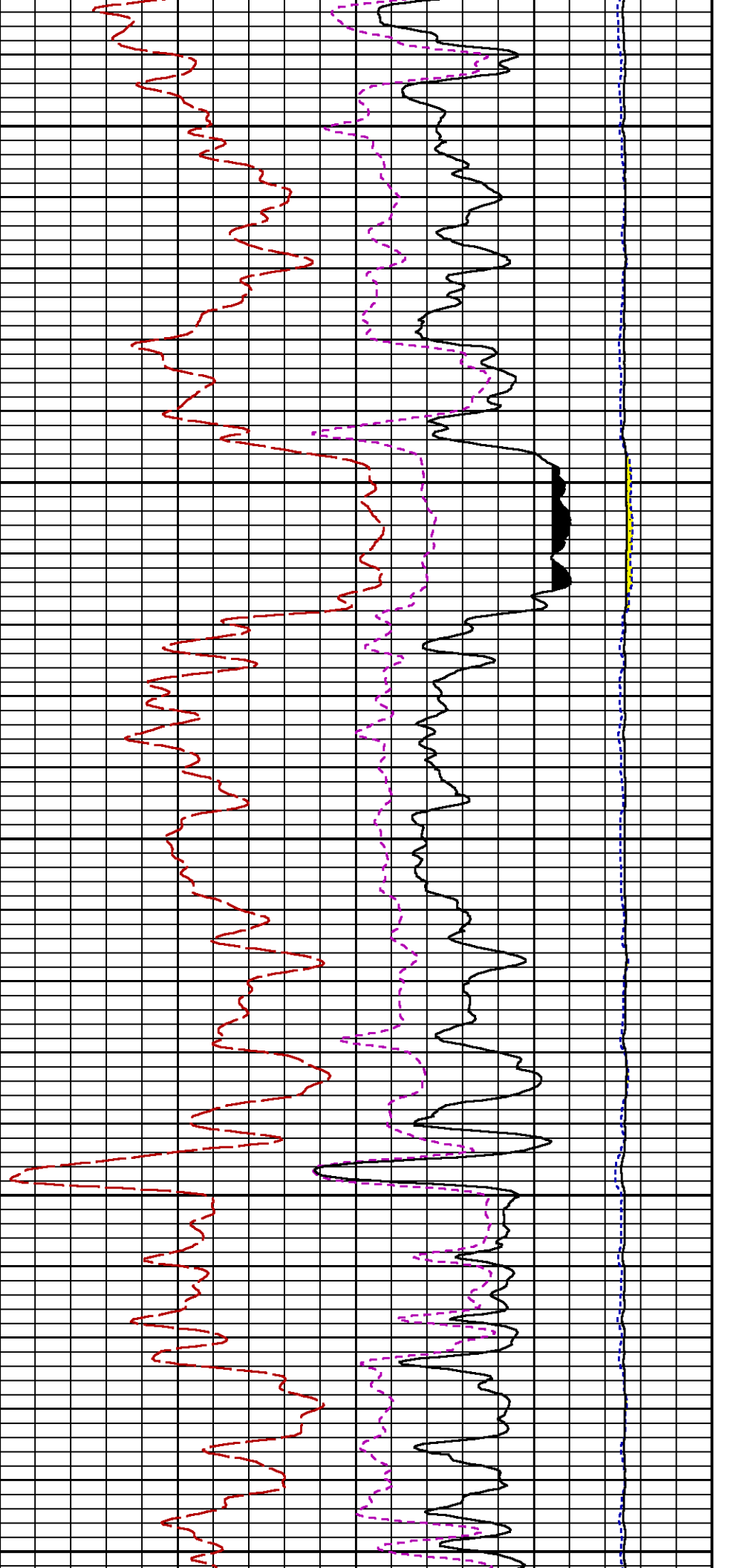


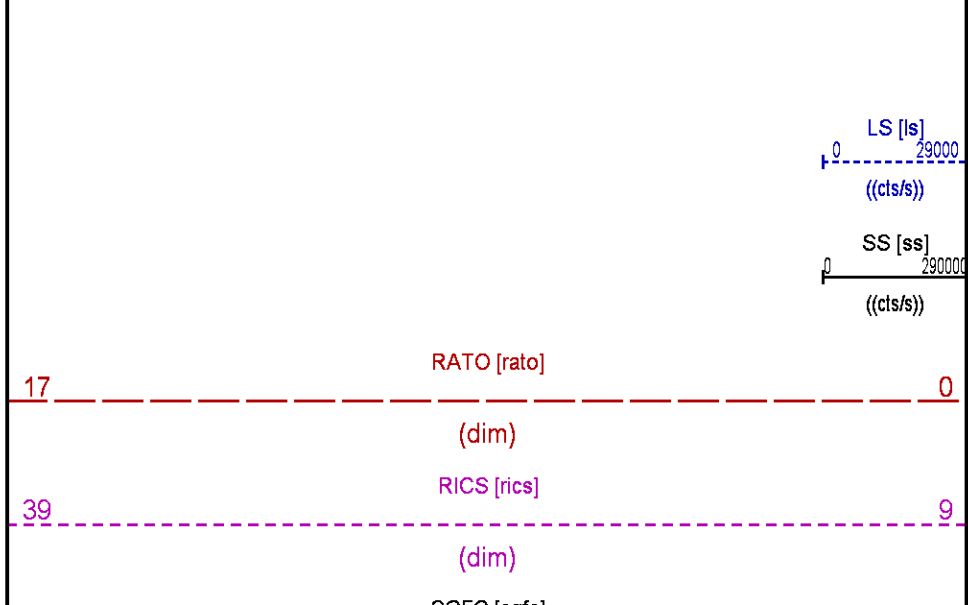
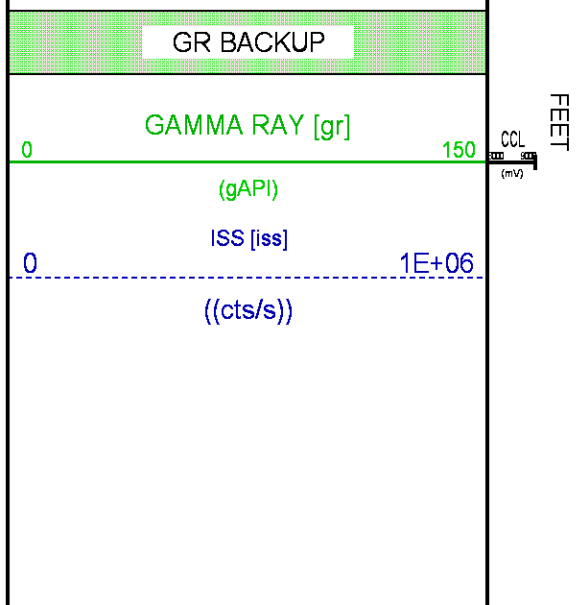
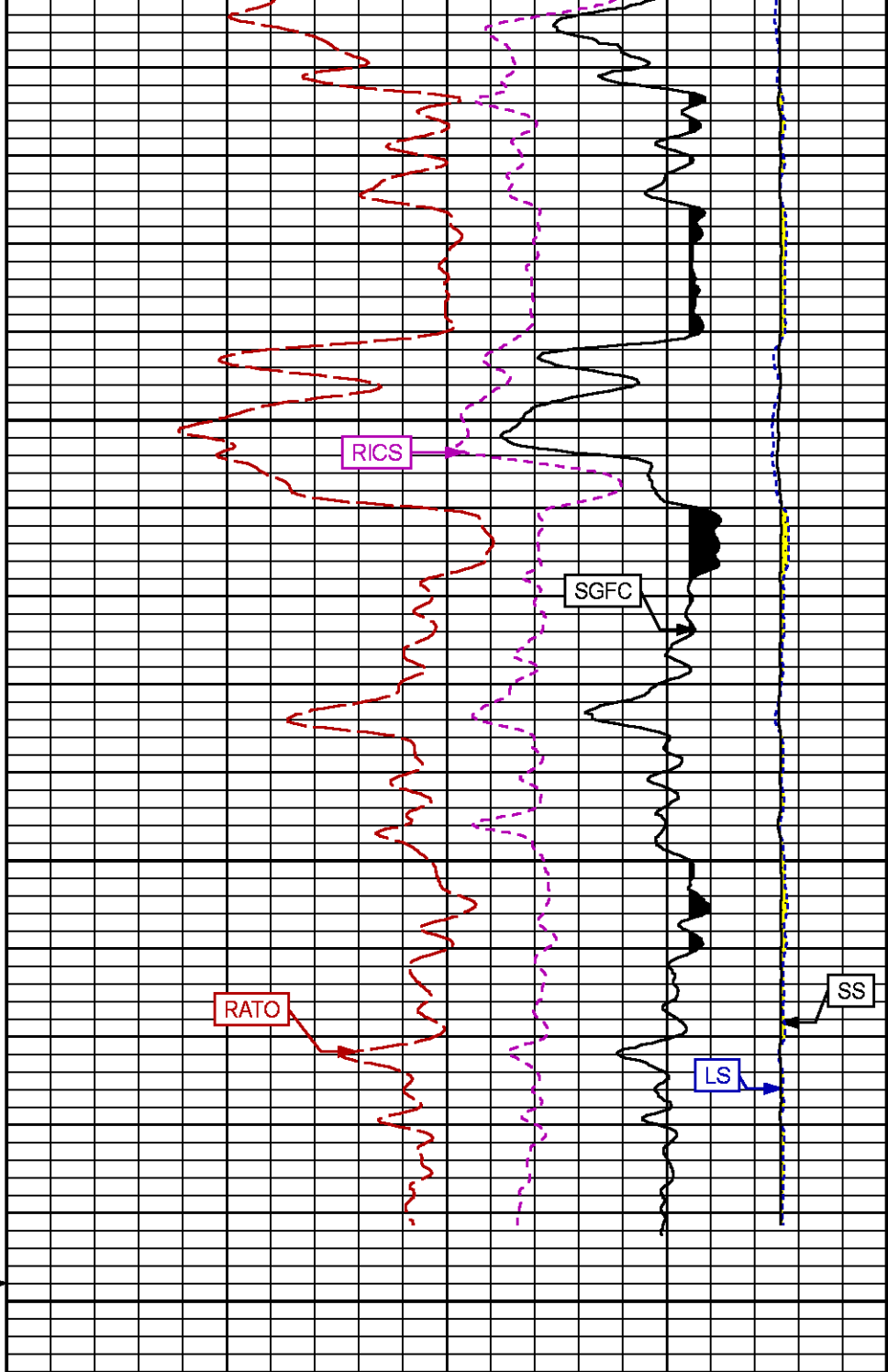
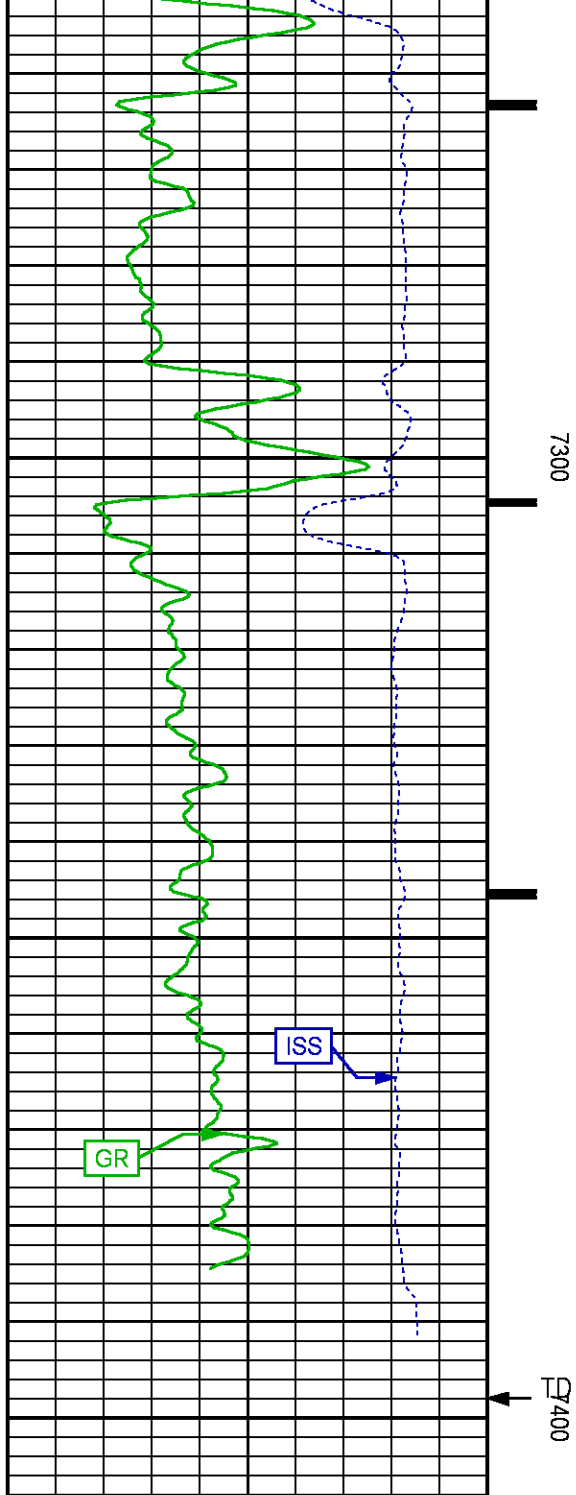












60

SGFC [sgfc]

0

(cu)

REPEAT PASS

ECLIPS 7.0i ECLIPS General Release Rel 7.0i Thu Jun 08 20:36:10 CDT 2017

Patches: 3

Plotted: Thu Apr 26 18:37:27 2018

PARAMETER AND FILTER SUMMARY REPORT

FILE: /dat1a/LARAMIE_NICHOLS_0994_24_10W/p354h01.prm
LOGGING MODE: DEPTH DIRECTION: UP
TOP DEPTH: 4444.620 ft BOTTOM DEPTH: 4683.799 ft

SYMMETRIC FILTER

MEASUREMENT TYPE	PARAMETER	VALUE	UNITS	INTERVAL (ft)
GR	FILTER ()	medium (1)		TOP BOTTOM

RPM PROCESSING

MEASUREMENT TYPE	PARAMETER	VALUE	UNITS	INTERVAL (ft)
PNC Parameters	BOREHOLE CONTENTS	FLUID		TOP BOTTOM
	OPEN/CASED HOLE	CASED HOLE		" "
	BOREHOLE SIZE	7.87	in	" "
	LARGEST CASING OD	4.50	in	" "
	MATRIX	SANDSTONE		" "

CURVE DESCRIPTION REPORT

CURVE NAME	CREATION DATE	CURVE DESCRIPTION
F1:CCL	N/A	CASING COLLAR LOCATOR
F1:GR	N/A	GAMMA RAY
F1:ISS	N/A	INELASTIC SHORT SPACE COUNT RATE
F1:LS	N/A	LONG SPACE COUNT RATE
F1:RATO	N/A	SHORT/LONG SPACE COUNT RATE RATIO
F1:RICS	N/A	SHORT SPACE INELASTIC TO CAPTURE COUNT RATE RATIO (ISS/CSS)
F1:SGFC	N/A	BOREHOLE AND DIFFUSION CORRECTED SIGMA
F1:SS	N/A	SHORT SPACE COUNT RATE

CURVE MEASURE POINT OFFSET

CURVE	OFFSET (ft)	CURVE	OFFSET (ft)	CURVE	OFFSET (ft)	CURVE	OFFSET (ft)
CCL	-25.00	ISS	-12.75	RATO	-12.75	SGFC	-12.75
GR	-22.75	LS	-12.75	RICS	-12.75	SS	-12.75

Presentation : SysA:/dat1a/LARAMIE_NICHOLS_0994_24_10W/0994-24-10W_RPM_REPEAT.fvpdf [5"/100' Scale]
Plot Interval : 4440 - 4680 Feet

Data File 1 : F1 : SysA:/dat1a/LARAMIE_NICHOLS_0994_24_10W/0994-24-10W_RPM_REPEAT.xtf
Created On : N/A
Company : LARAMIE ENERGY LLC
Well : NICHOLS 0994-24-10W
Field : VEGA
File Interval : 4418.75 - 4680.25 Feet
OCT : p354h

GR BACKUP

GAMMA RAY [gr]

0 150 CCL (mV)

(gAPI)

ISS [iss]

0 1E+06

((cts/s))

17 0 RATO [rato]

(dim)

39 9 RICS [rics]

(dim)

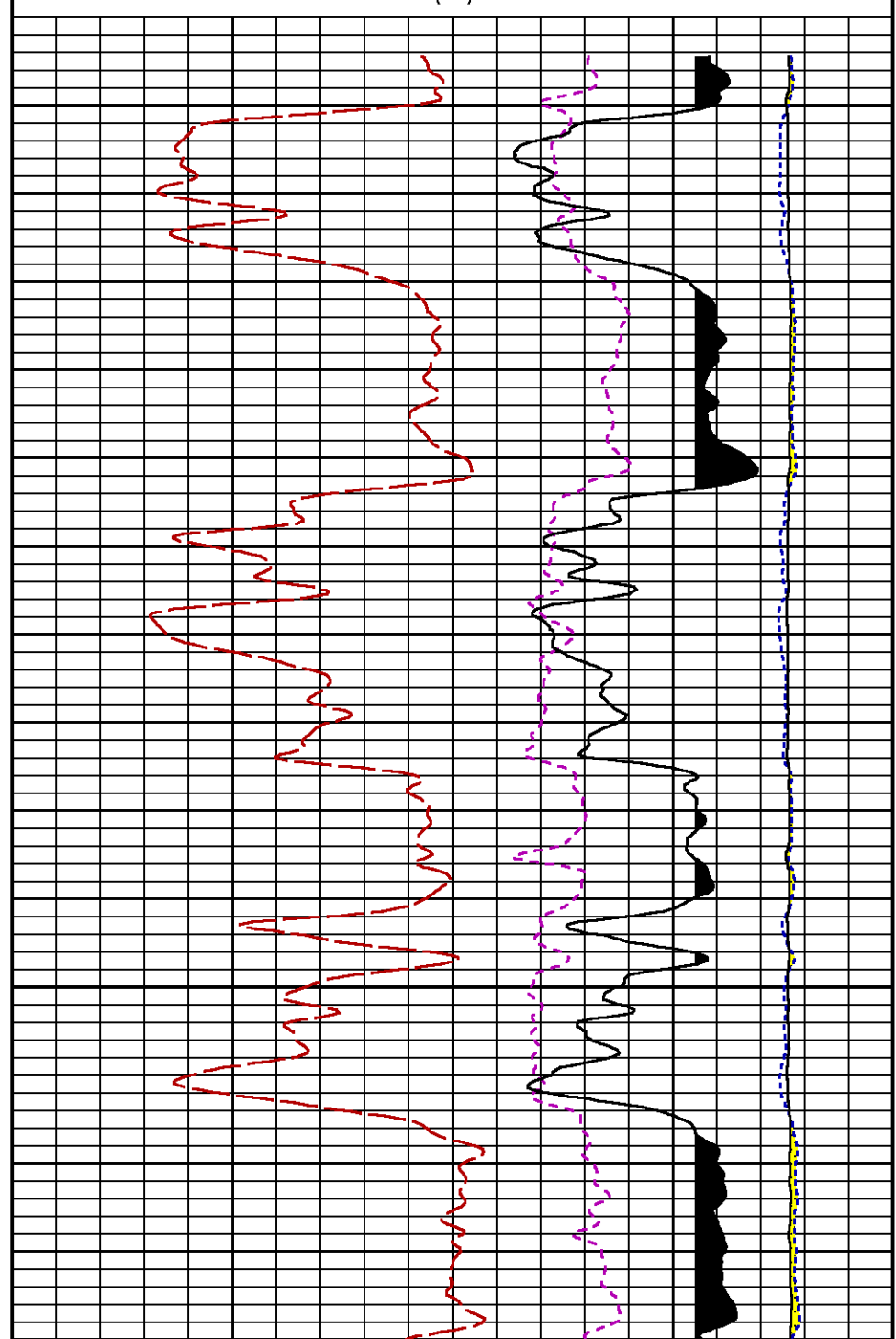
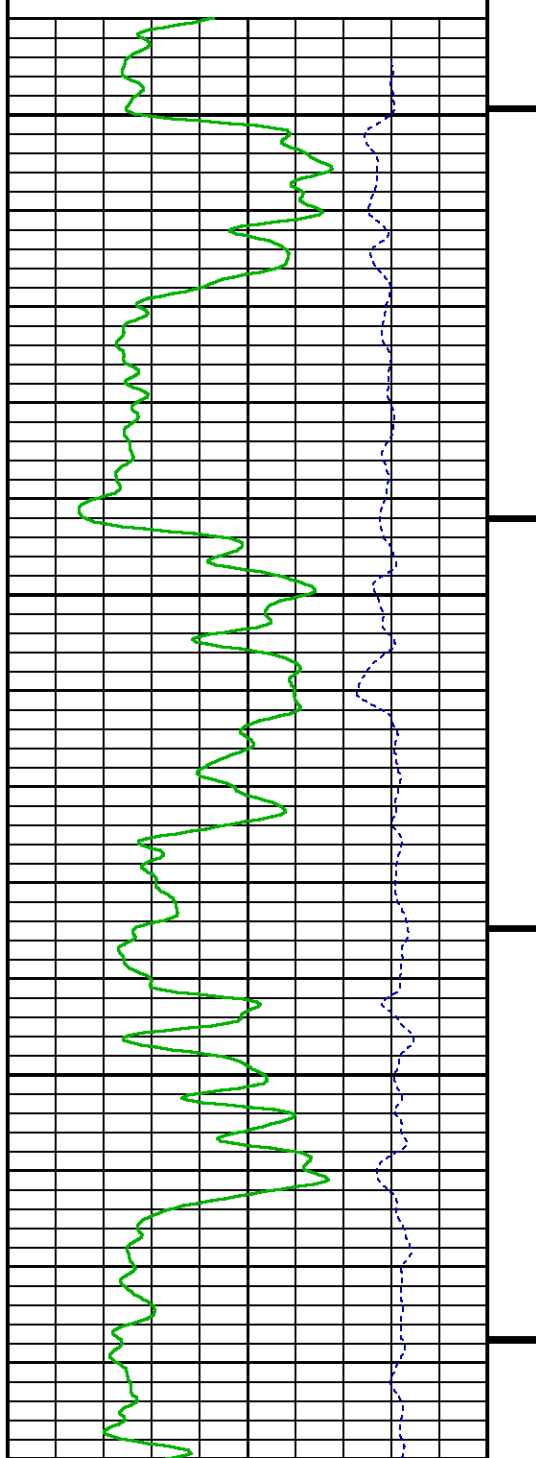
60 0 SGFC [sgfc]

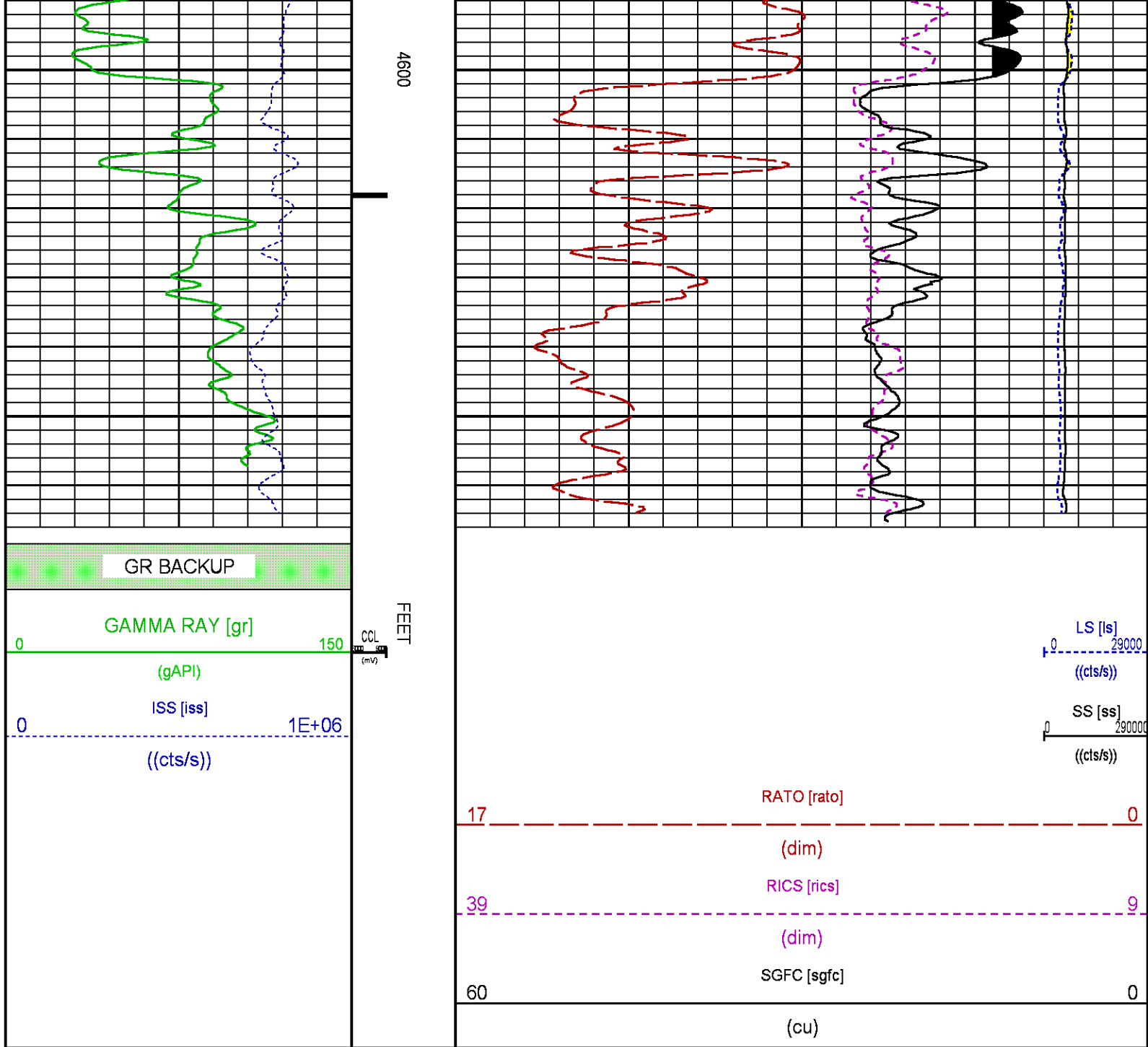
(cu)

LS [ls]
0 29000
((cts/s))

SS [ss]
0 29000
((cts/s))

4500





CALIBRATION / VERIFICATION SUMMARY

Source File: /dat1a/LARAMIE_NICHOLS_0994_24_10W/p354h.tp1

GR PRIMARY CALIBRATION SUMMARY

TOOL #: 2812LA 10274385

DATE/TIME PERFORMED: Mon Apr 9 11:12:15 2018

UNIT #: 3880TA HL6728

CALB JIG #: 4702NK DA_228

	BACKGROUND (cts/s)	CALBRTR ON (cts/s)	CR DIFF (cts/s)	MULT	BACKGROUND (gAPI)	CALBRTR ON (gAPI)	CALBRTR (gAPI)
GR	25.78	254.47	228.7	0.918	23.67	233.67	210

GR PRIMARY VERIFICATION SUMMARY

TOOL #: 2812LA 10274385

DATE/TIME PERFORMED: Mon Apr 9 11:15:30 2018

UNIT #: 3880TA HL6728

VERI JIG #: 4702NK DA_228

	BACKGROUND (cts/s)	CALBRTR ON (cts/s)	MULT	BACKGROUND (gAPI)	CALBRTR ON (gAPI)	DIFF. (gAPI)
GR	26.11	262.80	0.918	23.98	241.32	217.35
						200.00 220.00

RPM_PNC_3D PRIMARY CALIBRATION SUMMARY

TOOL: 8283PA 10430258

DATE/TIME PERFORMED: Wed Mar 28 19:08:19 2018

UNIT: 5753XD 111111

CALIBRATOR: 2437XB 112674

SOURCE: 8281AA 10430258

HOURS: 8281AA 19

	ISS	Mtr Vlt (V)	SS Gain	LS Gain	XLS Gain	EA Temp (degF)	Sync Delay (uSec)	RCAL
Raw Data	809301	122	2198	2389	2242	108	8.0	0.9715
Interpolated	1300000	143	2176	2381	2236			

	ISS	BKS	BKL	BKX	SGA1	SDA1	SGA2	SDA2
Raw Data	809301	6008	943	130	26.12	0.15	24.24	0.32
					25.35 26.40	0.00 0.20	23.60 24.80	0.00 0.40

	ISS	ILS	IXS	SS	SS2	LS	CSS	CLS
Raw Data	809301	169224	26183	89244	31721	8211	54062	13165
Fit Quality %		0.813	0.977	0.775	0.776	0.762	0.739	0.755

	ISS	RBOR	RIN ISS/ILS	RIN13 ISS/IXS	RICS ISS/CSS	RATO SS/LS	RTWO SS2/LS	RONE CSS/CLS
Raw Data	809301	1.43	4.78	30.92	14.97	10.87	3.86	4.11
		1.42 1.45	3.55 5.52	22.20 32.70	10.99 16.34	10.06 11.10	3.57 3.95	3.76 4.22
Fit Quality %		0.043	0.140	0.095	0.134	0.015	0.022	0.029
Reduced	1378034	1.43	4.80	31.03	15.01	10.87	3.86	4.11
		1.42 1.45	4.33 5.52	27.60 32.70	13.70 16.34	10.06 11.10	3.57 3.95	3.76 4.22

INSTRUMENT CONFIGURATION

Source File: /dat1a/LARAMIE_BRUTON_30-15W/RPM-tdg

A3 CABLEHEAD
Diameter : 1.37"

PCM POWER SUPPLY
Diameter : 1.70"
Length : 3.86'
Weight : 18 lbs
Series : 8250EA
Mnemonic : PCM

34.08'

TELEMETRY / CCL

Diameter : 1.70"
Length : 4.46'
Weight : 20 lbs
Series : 8248ED
Mnemonic : PCM
Measure Point: 1.00': CCL MP

CCL MP — 26.03'

GAMMA RAY

Diameter : 1.70"
Length : 3.02'
Weight : 15 lbs
Series : 8262XA
Mnemonic : GR
Measure Point: 0.89': GR MP

GR MP — 22.90'

RPM ELECTRONICS

Diameter : 1.70"
Length : 4.48'
Weight : 16 lbs
Series : 8281EA
Mnemonic : RPM

RPM C DETECTOR SECTION

Diameter : 1.70"
Length : 9.40'
Weight : 41 lbs
Series : 8283PA
Mnemonic : RPM
Measure Point: 5.45': XLS MP
Measure Point: 5.04': LS MP
Measure Point: 4.79': SS MP

XLS MP — 13.58'
LS MP — 13.16'
SS MP — 12.91'

RPM SOURCE SECTION

Diameter : 1.70"
Length : 4.70'
Weight : 18 lbs
Series : 8281FA
Mnemonic : RPM

TEMPERATURE / PRESSURE

Diameter : 1.70"
Length : 3.30'

Length : 33.0'
Weight : 13 lbs
Series : 8255XA
Mnemonic : SRPL
Measure Point: 1.52': TEMP MP

TEMP MP 1.65'
PRES MP

BULL PLUG 1 11/16

0.00'

TOTAL LENGTH: 34.08'
TOTAL WEIGHT: 144 lbs
MAX DIAMETER: 0'1.70"

**BAKER
HUGHES**
a GE company



ECLIPS

COMPANY LARAMIE ENERGY LLC
WELL NICHOLS 0994-24-10W
FIELD VEGA
COUNTY MESA STATE COLORADO

FILE NO:
CH136065
API NO:
05077103950000

LOCATION:

SHL: 2256' FNL & 2787' FWL
BHL: 2328' FNL & 1550' FWL

ELEVATIONS:

KB 7236 FT
DF
GL 7212 FT

SEC 24 TWP 9 S RGE 94 W

DATE 26-Apr-2018