

# T3S, R65W, 6th P.M.

ConocoPhillips Company

SCHUH #3-65 21-20 3AH, 3BH, 3CH & 3DH  
SE 1/4 SE 1/4, SECTION 21, T3S, R65W, 6th P.M.  
ADAMS COUNTY, COLORADO

BASIS OF BEARINGS  
BASIS OF ELEVATION  
BENCHMARK 374 LOCATED ON THE SECTION LINE BETWEEN  
SECTIONS 12 & 13, T5S, R64W, 6th. P.M., TAKEN FROM 1988  
PUBLISHED DATUM BY THE UNITED STATES DEPARTMENT OF  
THE INTERIOR, GEOLOGICAL SURVEY AS BEING 6054.61 FEET.

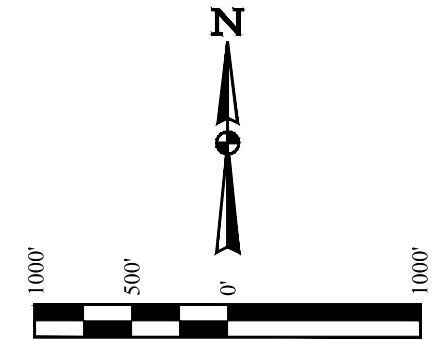
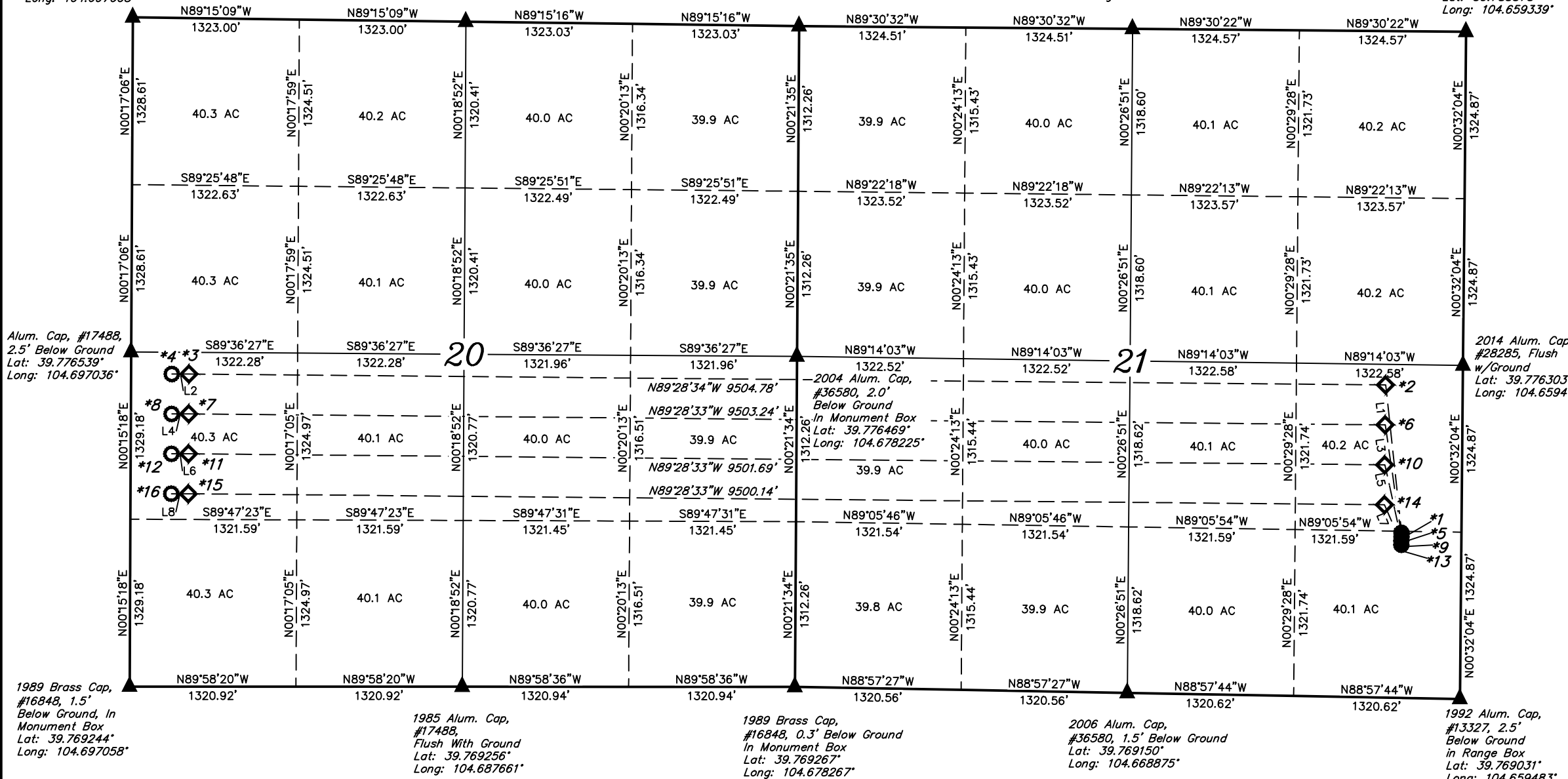
1989 Brass Cap,  
#16848, 0.6' Below Ground,  
In Monument Box  
Lat: 39.783831°  
Long: 104.697008°

2003 Alum. Cap,  
#28286,  
Flush With Ground  
Lat: 39.783753°  
Long: 104.687597°

1993 Brass Cap,  
0.8' Below Ground  
In Monument Box  
Lat: 39.785672°  
Long: 104.678186°

2006 Alum. Cap,  
#36580, 1.5'  
Below Ground  
Lat: 39.783625°  
Long: 104.668764°

Alum. Cap, #25961,  
0.7' Below Ground  
in Range Box  
Lat: 39.783575°  
Long: 104.659339°



LINE TABLE		
LINE	DIRECTION	LENGTH
L1	N06°10'27"W	1180.84'
L2	N89°58'20"W	135.00'
L3	N08°17'54"W	898.40'
L4	N89°58'20"W	135.00'
L5	N12°21'26"W	618.32'
L6	N89°58'20"W	135.00'
L7	N22°56'10"W	346.38'
L8	N89°58'20"W	135.00'

Alum. Cap, #17488,  
2.5' Below Ground  
Lat: 39.776539°  
Long: 104.697036°

2014 Alum. Cap,  
#28285, Flush  
w/Ground  
Lat: 39.776303°  
Long: 104.659411°

1989 Brass Cap,  
#16848, 1.5'  
Below Ground, In  
Monument Box  
Lat: 39.769244°  
Long: 104.697058°

1985 Alum. Cap,  
#17488,  
Flush With Ground  
Lat: 39.769256°  
Long: 104.687661°

1989 Brass Cap,  
#16848, 0.3' Below Ground  
In Monument Box  
Lat: 39.769267°  
Long: 104.678267°

2006 Alum. Cap,  
#36580, 1.5' Below Ground  
Lat: 39.769150°  
Long: 104.668875°

1992 Alum. Cap,  
#13327, 2.5'  
Below Ground  
in Range Box  
Lat: 39.769031°  
Long: 104.659483°

CERTIFICATE OF SURVEY  
THIS IS TO CERTIFY THAT THE ABOVE MAP WAS PREPARED FROM FIELD  
NOTES OF ACTUAL SURVEYS MADE BY ME OR UNDER MY SUPERVISION  
AND THAT THE SAME ARE TRUE AND CORRECT TO THE BEST OF MY  
KNOWLEDGE AND BELIEF.

CHAD MEIERS  
REGISTERED LAND SURVEYOR  
REGISTRATION NO. 28285  
STATE OF COLORADO  
EXPIRES 12-31-18

REV: 2 02-19-18 J.J. (SHL & BPI CHANGE)

**LEGEND:**  
 ◻ = 90° SYMBOL  
 ● = PROPOSED WELLHEAD.  
 ◆ = PRODUCTION INTERVAL.  
 ○ = TARGET BOTTOM HOLE.  
 ▲ = SECTION CORNERS LOCATED. (NAD 83)

WELL	SURFACE LOCATION	BEGINNING PRODUCTION INTERVAL	ENDING PRODUCTION INTERVAL	TARGET BOTTOM HOLE
3AH	*1 1311' FSL 475' FEL	*2 2483' FSL 613' FEL	*3 2483' FSL 460' FWL	*4 2483' FSL 325' FWL
3BH	*5 1279' FSL 475' FEL	*6 2166' FSL 613' FEL	*7 2166' FSL 460' FWL	*8 2166' FSL 325' FWL
3CH	*9 1248' FSL 475' FEL	*10 1849' FSL 613' FEL	*11 1849' FSL 460' FWL	*12 1849' FSL 325' FWL
3DH	*13 1216' FSL 475' FEL	*14 1532' FSL 613' FEL	*15 1532' FSL 460' FWL	*16 1532' FSL 325' FWL

**UINTEAH**  
ENGINEERING & LAND SURVEYING

**UELS, LLC**  
Corporate Office \* 85 South 200 East  
Vernal, UT 84078 \* (435) 789-1017

SURVEYED BY	CHAD MEIERS	11-08-17	SCALE
DRAWN BY	J.J.	10-04-17	1" = 1000'

**SECTION BREAKDOWN**