

<b>Well / Battery</b> <b>TAIGA MTN. 16-34</b>	<b>Prospect Name</b> TAIGA MOUNTAIN	<b>Total Depth</b> 3750	<b>Est. Start Date</b> 8/31/2018
<b>Location</b> SWSE	<b>Sec-Twn-Rng</b> 16 1N 103W	<b>Producing Horizon</b> CASTLEGATE	<b>County &amp; State</b> RIO BLANCO, CO

AFE Description  
PA AND REMEDIATION

### AFTER-WELLBORE DIAGRAM

**Prepared Date:** 7/9/2018  
**Prepared By:** Jared Kimbrell

#### General Info

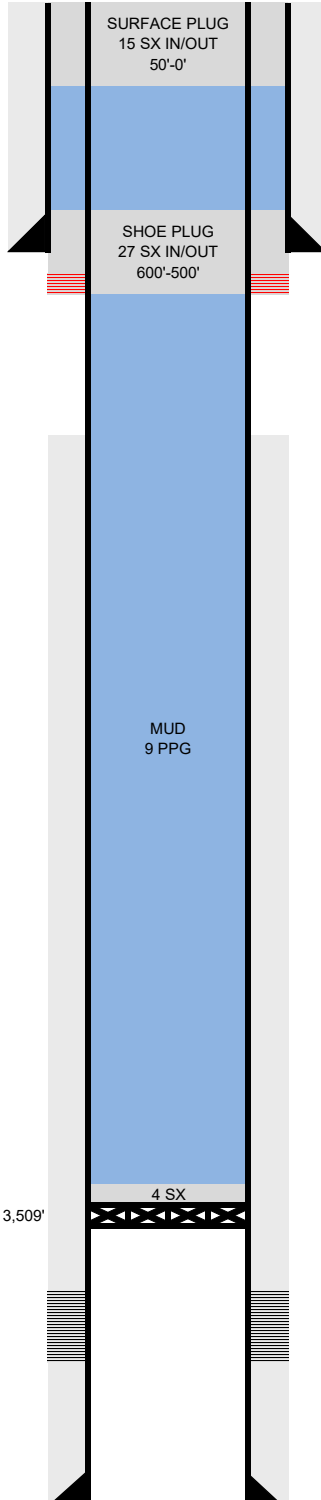
API #: 05-103-09758  
KB Elevation: 5,298'  
GL Elevation: 5284'  
Spud Date: 3/27/1997  
Completion Date: 4/29/1997  
TVD: 3,750'  
MD: 4,000'  
Last PBTD: 3624' (12/16/2003)

#### Tubing Detail

2 3/8 inch(OD)  
6.5 # (weight)  
J-55 grade

#### Tubing Tally

	Length	Depth
TBG 2 3/8	3508	3508
ANCHOR/CATCHER	1	3509
TBG 2 3/8	50	3559
LANDING COLLAR	1	3560
TBG 2 3/8	82	3712
GUIDE SHOE	1	3713



#### Surface Casing

8 5/8" inch (OD)  
24 # (weight)  
X-XX grade  
550' depth from KB  
Surface cement top  
300 sacks of cement  
12 1/4 inch (OD) HOLE SIZE

Visual Returns

#### Production Casing

5 1/2 inch (OD)  
15.5 # (weight)  
X-XX grade  
3704 depth from KB  
1781 cement top  
220 sacks of cement  
7 5/8 inch (OD) HOLE SIZE

CBL

#### Open Perforations

3,556-3,591' (4 SPF)  
Castle Gate

PBTD: 3624' (tagged on 12/16/2003)