

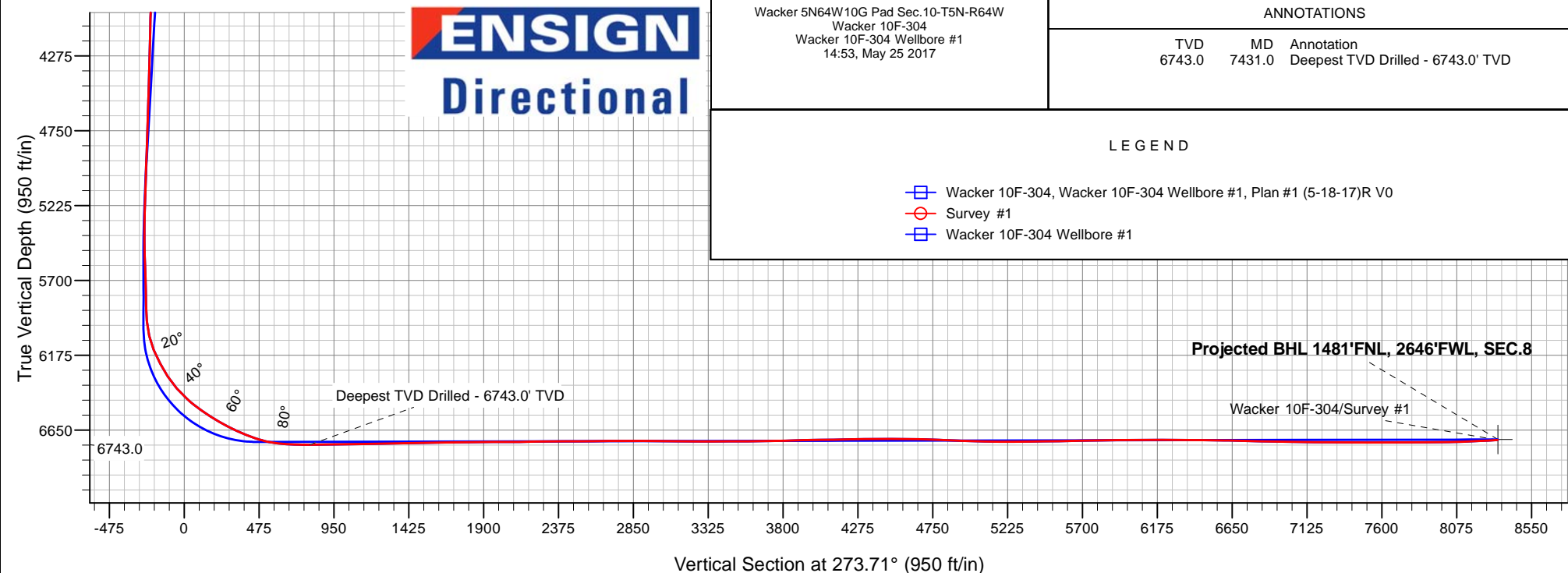
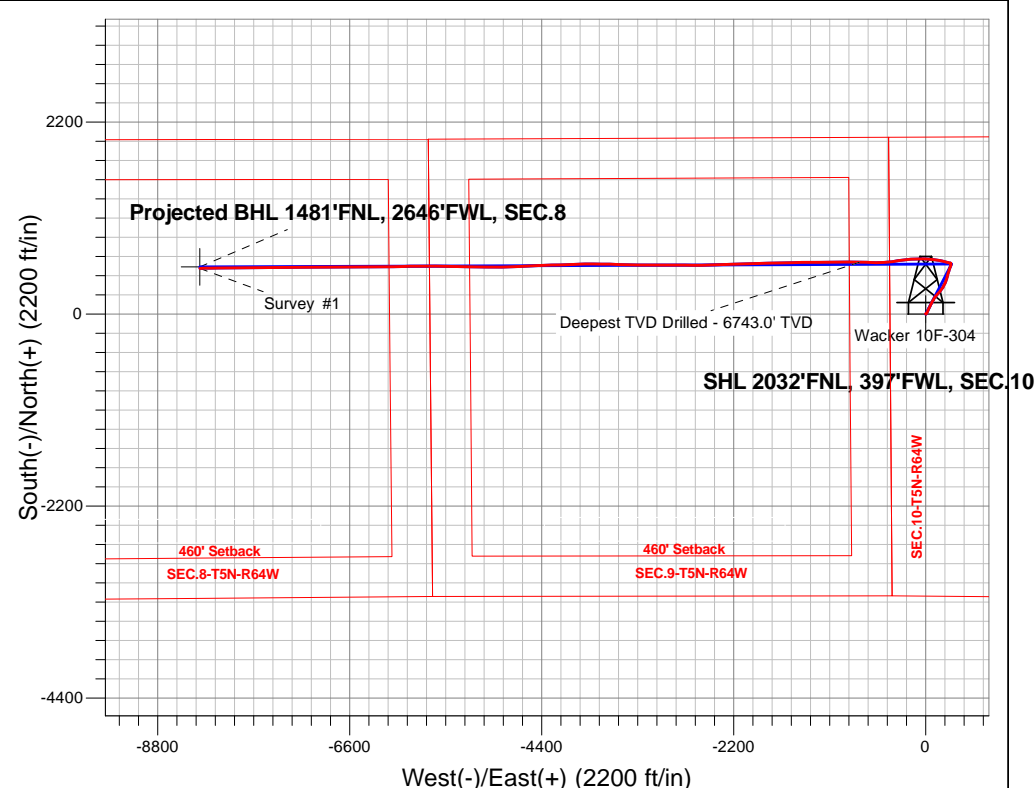
PDC Energy Inc. DJ Basin

Well Name: **Wacker 10F-304**

Surface Location: Wacker 5N64W10G Pad Sec.10-T5N-R64W
 North American Datum 1983 , US State Plane 1983, Colorado Northern Zone
 Ground Elevation: 4611.0
 +N/-S+E/-W Northing Easting Latitude Longitude Slot
 0.0 0.0 3266123.33 40.415427 -104.544240
 Ensign Rig #152 - RKB - 23'WELL @ 4634.0ft (Ensign Rig #152 - RKB - 23')

FINAL SURVEY

Projected Bottom Hole Location
14,991'MD 6713'TVD 524'N & 8317'W of SHL
93.2 degree Incl @ 269.0 degree AZM



ENSIGN
 Directional

Wacker 5N64W10G Pad Sec.10-T5N-R64W
 Wacker 10F-304
 Wacker 10F-304 Wellbore #1
 14:53, May 25 2017

ANNOTATIONS

TVD	MD	Annotation
6743.0	7431.0	Deepest TVD Drilled - 6743.0' TVD

LEGEND

- Wacker 10F-304, Wacker 10F-304 Wellbore #1, Plan #1 (5-18-17)R V0
- Survey #1
- Wacker 10F-304 Wellbore #1



PDC Energy Inc. DJ Basin

Sec.10-T5N-R64W

Wacker 5N64W10G Pad Sec.10-T5N-R64W

Wacker 10F-304

Wacker 10F-304 Wellbore #1

Survey: Survey #1

Standard Survey Report

25 May, 2017

Company:	PDC Energy Inc. DJ Basin	Local Co-ordinate Reference:	Well Wacker 10F-304
Project:	Sec.10-T5N-R64W	TVD Reference:	WELL @ 4634.0ft (Ensign Rig #152 - RKB - 23')
Site:	Wacker 5N64W10G Pad Sec.10-T5N-R64W	MD Reference:	WELL @ 4634.0ft (Ensign Rig #152 - RKB - 23')
Well:	Wacker 10F-304	North Reference:	True
Wellbore:	Wacker 10F-304 Wellbore #1	Survey Calculation Method:	Minimum Curvature
Design:	Wacker 10F-304 Wellbore #1	Database:	US_EDM

Project	Sec.10-T5N-R64W, Weld County, Colorado		
Map System:	US State Plane 1983	System Datum:	Mean Sea Level
Geo Datum:	North American Datum 1983		Using Well Reference Point
Map Zone:	Colorado Northern Zone		Using geodetic scale factor

Site		Wacker 5N64W10G Pad Sec.10-T5N-R64W			
Site Position:		Northing:	1,395,629.54 usft	Latitude:	40.415468
From:	Lat/Long	Easting:	3,266,124.01 usft	Longitude:	-104.544237
Position Uncertainty:	0.0 ft	Slot Radius:	13-3/16 "	Grid Convergence:	0.62 °

Well	Wacker 10F-304					
Well Position	+N/-S	0.0 ft	Northing:	1,395,614.58 usft	Latitude:	40.415427
	+E/-W	0.0 ft	Easting:	3,266,123.33 usft	Longitude:	-104.544240
Position Uncertainty		0.0 ft	Wellhead Elevation:	0.0 ft	Ground Level:	4,611.0 ft

Wellbore	Wacker 10F-304 Wellbore #1				
Magnetics	Model Name	Sample Date	Declination (°)	Dip Angle (°)	Field Strength (nT)
	IGRF2010	5/18/2017	7.95	66.89	52,539

Design	Wacker 10F-304 Wellbore #1				
Audit Notes:					
Version:	1.0	Phase:	ACTUAL	Tie On Depth:	0.0
Vertical Section:	Depth From (TVD) (ft)	+N/-S (ft)	+E/-W (ft)	Direction (°)	
	0.0	0.0	0.0	273.71	

Survey Program	Date	5/25/2017			
From (ft)	To (ft)	Survey (Wellbore)	Tool Name	Description	
158.0	14,991.0	Survey #1 (Wacker 10F-304 Wellbore #1)	MWD	MWD - Standard	

Survey										
Measured Depth (ft)	Inclination (°)	Azimuth (°)	Vertical Depth (ft)	+N/-S (ft)	+E/-W (ft)	Vertical Section (ft)	Dogleg Rate (°/100usft)	Build Rate (°/100usft)	Turn Rate (°/100usft)	
0.0	0.00	0.00	0.0	0.0	0.0	0.0	0.00	0.00	0.00	
158.0	0.40	188.30	158.0	-0.5	-0.1	0.0	0.25	0.25	0.00	
254.0	0.20	106.40	254.0	-0.9	0.0	-0.1	0.44	-0.21	-85.31	
349.0	0.20	134.90	349.0	-1.1	0.3	-0.4	0.10	0.00	30.00	
445.0	1.20	57.90	445.0	-0.7	1.3	-1.3	1.22	1.04	-80.21	
540.0	3.50	34.60	539.9	2.2	3.8	-3.6	2.57	2.42	-24.53	
635.0	5.70	35.70	634.6	8.5	8.2	-7.6	2.32	2.32	1.16	
731.0	7.60	29.40	729.9	17.9	14.1	-12.9	2.12	1.98	-6.56	
827.0	8.50	27.50	825.0	29.7	20.5	-18.5	0.98	0.94	-1.98	
922.0	8.80	23.80	918.9	42.6	26.6	-23.8	0.67	0.32	-3.89	

Company:	PDC Energy Inc. DJ Basin	Local Co-ordinate Reference:	Well Wacker 10F-304
Project:	Sec.10-T5N-R64W	TVD Reference:	WELL @ 4634.0ft (Ensign Rig #152 - RKB - 23')
Site:	Wacker 5N64W10G Pad Sec.10-T5N-R64W	MD Reference:	WELL @ 4634.0ft (Ensign Rig #152 - RKB - 23')
Well:	Wacker 10F-304	North Reference:	True
Wellbore:	Wacker 10F-304 Wellbore #1	Survey Calculation Method:	Minimum Curvature
Design:	Wacker 10F-304 Wellbore #1	Database:	US_EDM

Survey										
Measured Depth (ft)	Inclination (°)	Azimuth (°)	Vertical Depth (ft)	+N/-S (ft)	+E/-W (ft)	Vertical Section (ft)	Dogleg Rate (°/100usft)	Build Rate (°/100usft)	Turn Rate (°/100usft)	
1,017.0	9.00	21.80	1,012.8	56.1	32.3	-28.6	0.39	0.21	-2.11	
1,112.0	9.70	26.10	1,106.5	70.2	38.6	-34.0	1.04	0.74	4.53	
1,207.0	9.20	27.80	1,200.2	84.1	45.7	-40.1	0.60	-0.53	1.79	
1,303.0	9.60	26.60	1,294.9	98.1	52.8	-46.4	0.46	0.42	-1.25	
1,398.0	9.40	26.20	1,388.6	112.1	59.8	-52.4	0.22	-0.21	-0.42	
1,493.0	7.70	22.70	1,482.6	124.9	65.7	-57.5	1.87	-1.79	-3.68	
1,615.0	6.90	32.60	1,603.6	138.6	72.8	-63.7	1.22	-0.66	8.11	
1,779.0	6.70	32.20	1,766.4	155.0	83.2	-73.0	0.13	-0.12	-0.24	
1,874.0	6.70	30.10	1,860.8	164.5	88.9	-78.1	0.26	0.00	-2.21	
1,970.0	6.60	25.90	1,956.1	174.3	94.1	-82.7	0.52	-0.10	-4.38	
2,064.0	6.20	28.00	2,049.6	183.7	98.9	-86.8	0.49	-0.43	2.23	
2,160.0	6.20	40.60	2,145.0	192.2	104.7	-92.0	1.41	0.00	13.13	
2,255.0	6.00	35.40	2,239.5	200.1	110.9	-97.7	0.62	-0.21	-5.47	
2,351.0	7.70	41.90	2,334.8	209.0	118.1	-104.3	1.94	1.77	6.77	
2,446.0	7.40	40.80	2,428.9	218.4	126.4	-112.0	0.35	-0.32	-1.16	
2,542.0	9.10	42.40	2,524.0	228.7	135.5	-120.4	1.79	1.77	1.67	
2,638.0	8.80	42.90	2,618.8	239.6	145.6	-129.8	0.32	-0.31	0.52	
2,734.0	8.50	42.10	2,713.7	250.3	155.4	-138.9	0.34	-0.31	-0.83	
2,829.0	9.50	39.20	2,807.5	261.6	165.1	-147.8	1.16	1.05	-3.05	
2,925.0	8.90	34.30	2,902.3	273.8	174.2	-156.1	1.03	-0.63	-5.10	
3,020.0	8.40	35.90	2,996.2	285.5	182.5	-163.6	0.58	-0.53	1.68	
3,115.0	7.50	36.80	3,090.3	296.1	190.2	-170.7	0.96	-0.95	0.95	
3,210.0	9.00	25.50	3,184.3	307.8	197.2	-176.8	2.32	1.58	-11.89	
3,305.0	8.20	25.50	3,278.2	320.6	203.3	-182.1	0.84	-0.84	0.00	
3,401.0	7.30	28.90	3,373.4	332.1	209.2	-187.2	1.05	-0.94	3.54	
3,496.0	6.80	32.60	3,467.6	342.2	215.1	-192.5	0.71	-0.53	3.89	
3,592.0	7.40	25.70	3,562.9	352.5	220.9	-197.6	1.09	0.63	-7.19	
3,687.0	8.30	17.80	3,657.0	364.6	225.6	-201.5	1.48	0.95	-8.32	
3,782.0	8.40	18.30	3,751.0	377.7	229.9	-204.9	0.13	0.11	0.53	
3,877.0	8.30	18.30	3,845.0	390.8	234.2	-208.4	0.11	-0.11	0.00	
3,973.0	7.50	19.20	3,940.1	403.3	238.4	-211.8	0.84	-0.83	0.94	
4,068.0	6.80	17.10	4,034.4	414.5	242.1	-214.8	0.79	-0.74	-2.21	
4,163.0	6.70	14.50	4,128.7	425.2	245.2	-217.1	0.34	-0.11	-2.74	
4,258.0	6.70	15.90	4,223.1	435.9	248.1	-219.3	0.17	0.00	1.47	
4,353.0	7.70	15.30	4,317.3	447.4	251.3	-221.8	1.06	1.05	-0.63	
4,449.0	7.50	13.00	4,412.5	459.7	254.4	-224.1	0.38	-0.21	-2.40	
4,544.0	6.80	16.60	4,506.7	471.1	257.4	-226.3	0.87	-0.74	3.79	
4,639.0	6.90	18.10	4,601.0	482.0	260.8	-229.0	0.22	0.11	1.58	
4,735.0	7.40	21.80	4,696.3	493.2	264.9	-232.4	0.71	0.52	3.85	
4,830.0	6.90	18.80	4,790.6	504.3	269.0	-235.7	0.66	-0.53	-3.16	
4,925.0	7.40	20.10	4,884.8	515.4	272.9	-239.0	0.55	0.53	1.37	
5,021.0	7.40	18.10	4,980.0	527.1	277.0	-242.2	0.27	0.00	-2.08	
5,117.0	7.00	19.20	5,075.3	538.5	280.8	-245.3	0.44	-0.42	1.15	
5,212.0	6.30	21.00	5,169.6	548.8	284.6	-248.4	0.77	-0.74	1.89	

Company:	PDC Energy Inc. DJ Basin	Local Co-ordinate Reference:	Well Wacker 10F-304
Project:	Sec.10-T5N-R64W	TVD Reference:	WELL @ 4634.0ft (Ensign Rig #152 - RKB - 23')
Site:	Wacker 5N64W10G Pad Sec.10-T5N-R64W	MD Reference:	WELL @ 4634.0ft (Ensign Rig #152 - RKB - 23')
Well:	Wacker 10F-304	North Reference:	True
Wellbore:	Wacker 10F-304 Wellbore #1	Survey Calculation Method:	Minimum Curvature
Design:	Wacker 10F-304 Wellbore #1	Database:	US_EDM

Survey									
Measured Depth (ft)	Inclination (°)	Azimuth (°)	Vertical Depth (ft)	+N/-S (ft)	+E/-W (ft)	Vertical Section (ft)	Dogleg Rate (°/100usft)	Build Rate (°/100usft)	Turn Rate (°/100usft)
5,307.0	5.60	16.60	5,264.1	558.1	287.8	-251.0	0.88	-0.74	-4.63
5,402.0	5.20	10.90	5,358.7	566.8	289.9	-252.6	0.70	-0.42	-6.00
5,498.0	2.60	347.00	5,454.5	573.2	290.2	-252.5	3.14	-2.71	-24.90
5,593.0	2.80	324.50	5,549.4	577.2	288.4	-250.4	1.13	0.21	-23.68
5,715.0	2.70	315.60	5,671.2	581.7	284.7	-246.4	0.36	-0.08	-7.30
5,810.0	1.20	294.50	5,766.2	583.7	282.2	-243.8	1.72	-1.58	-22.21
5,906.0	1.10	268.60	5,862.1	584.1	280.4	-241.9	0.55	-0.10	-26.98
6,001.0	4.40	280.20	5,957.0	584.7	275.9	-237.4	3.51	3.47	12.21
6,097.0	13.50	286.00	6,051.8	588.4	261.4	-222.8	9.51	9.48	6.04
6,191.0	23.30	286.40	6,140.8	596.7	233.0	-193.8	10.43	10.43	0.43
6,287.0	27.50	283.80	6,227.5	607.4	193.2	-153.5	4.53	4.38	-2.71
6,382.0	33.60	277.20	6,309.3	615.9	145.8	-105.6	7.32	6.42	-6.95
6,478.0	41.20	277.80	6,385.6	623.6	88.0	-47.5	7.93	7.92	0.63
6,573.0	47.70	272.50	6,453.4	629.3	21.8	19.0	7.87	6.84	-5.58
6,668.0	54.10	272.00	6,513.2	632.2	-51.8	92.6	6.75	6.74	-0.53
6,764.0	57.70	267.20	6,567.1	631.6	-131.2	171.9	5.58	3.75	-5.00
6,859.0	61.90	263.20	6,614.9	624.7	-213.0	253.0	5.72	4.42	-4.21
6,955.0	65.90	262.00	6,657.1	613.6	-298.5	337.6	4.32	4.17	-1.25
7,050.0	70.20	261.80	6,692.6	601.1	-385.7	423.8	4.53	4.53	-0.21
7,145.0	76.20	266.70	6,720.1	592.1	-476.1	513.5	8.02	6.32	5.16
7,240.0	84.90	271.10	6,735.6	590.3	-569.7	606.7	10.23	9.16	4.63
7,336.0	87.80	271.60	6,741.8	592.6	-665.5	702.4	3.07	3.02	0.52
7,431.0	90.70	270.60	6,743.0	594.4	-760.4	797.3	3.23	3.05	-1.05
Deepest TVD Drilled - 6743.0' TVD									
7,527.0	91.30	270.60	6,741.3	595.4	-856.4	893.2	0.63	0.63	0.00
7,622.0	90.60	270.00	6,739.7	595.9	-951.4	988.0	0.97	-0.74	-0.63
7,717.0	89.70	269.30	6,739.5	595.4	-1,046.4	1,082.7	1.20	-0.95	-0.74
7,812.0	91.20	269.00	6,738.8	593.9	-1,141.4	1,177.4	1.61	1.58	-0.32
7,908.0	91.50	269.30	6,736.5	592.5	-1,237.3	1,273.1	0.44	0.31	0.31
8,002.0	91.60	269.70	6,733.9	591.7	-1,331.3	1,366.8	0.44	0.11	0.43
8,098.0	91.00	269.30	6,731.8	590.9	-1,427.3	1,462.5	0.75	-0.63	-0.42
8,194.0	91.30	269.20	6,729.8	589.6	-1,523.2	1,558.2	0.33	0.31	-0.10
8,288.0	90.70	268.60	6,728.2	587.8	-1,617.2	1,651.9	0.90	-0.64	-0.64
8,383.0	90.70	268.50	6,727.0	585.4	-1,712.2	1,746.5	0.11	0.00	-0.11
8,479.0	90.20	268.60	6,726.3	583.0	-1,808.1	1,842.1	0.53	-0.52	0.10
8,574.0	89.40	267.60	6,726.6	579.8	-1,903.1	1,936.6	1.35	-0.84	-1.05
8,669.0	90.90	268.60	6,726.4	576.7	-1,998.0	2,031.2	1.90	1.58	1.05
8,765.0	91.00	268.50	6,724.8	574.2	-2,094.0	2,126.8	0.15	0.10	-0.10
8,860.0	90.80	268.30	6,723.3	571.6	-2,188.9	2,221.3	0.30	-0.21	-0.21
8,956.0	90.40	268.10	6,722.3	568.6	-2,284.9	2,316.9	0.47	-0.42	-0.21
9,051.0	90.30	268.10	6,721.7	565.4	-2,379.8	2,411.4	0.11	-0.11	0.00
9,147.0	90.50	268.10	6,721.0	562.2	-2,475.8	2,507.0	0.21	0.21	0.00
9,241.0	90.40	268.10	6,720.3	559.1	-2,569.7	2,600.5	0.11	-0.11	0.00

Company:	PDC Energy Inc. DJ Basin	Local Co-ordinate Reference:	Well Wacker 10F-304
Project:	Sec.10-T5N-R64W	TVD Reference:	WELL @ 4634.0ft (Ensign Rig #152 - RKB - 23')
Site:	Wacker 5N64W10G Pad Sec.10-T5N-R64W	MD Reference:	WELL @ 4634.0ft (Ensign Rig #152 - RKB - 23')
Well:	Wacker 10F-304	North Reference:	True
Wellbore:	Wacker 10F-304 Wellbore #1	Survey Calculation Method:	Minimum Curvature
Design:	Wacker 10F-304 Wellbore #1	Database:	US_EDM

Survey									
Measured Depth (ft)	Inclination (°)	Azimuth (°)	Vertical Depth (ft)	+N/-S (ft)	+E/-W (ft)	Vertical Section (ft)	Dogleg Rate (°/100usft)	Build Rate (°/100usft)	Turn Rate (°/100usft)
9,337.0	90.30	270.90	6,719.7	558.3	-2,665.7	2,696.3	2.92	-0.10	2.92
9,432.0	90.20	270.70	6,719.3	559.6	-2,760.7	2,791.1	0.24	-0.11	-0.21
9,527.0	90.00	270.00	6,719.1	560.2	-2,855.7	2,886.0	0.77	-0.21	-0.74
9,622.0	89.80	270.00	6,719.3	560.2	-2,950.7	2,980.8	0.21	-0.21	0.00
9,718.0	89.50	270.60	6,719.9	560.7	-3,046.7	3,076.6	0.70	-0.31	0.63
9,813.0	89.30	270.60	6,720.9	561.7	-3,141.7	3,171.4	0.21	-0.21	0.00
9,909.0	89.00	270.60	6,722.3	562.7	-3,237.7	3,267.3	0.31	-0.31	0.00
10,004.0	90.60	270.70	6,722.6	563.8	-3,332.6	3,362.2	1.69	1.68	0.11
10,100.0	90.60	271.50	6,721.6	565.6	-3,428.6	3,458.1	0.83	0.00	0.83
10,195.0	90.30	271.60	6,720.9	568.2	-3,523.6	3,553.0	0.33	-0.32	0.11
10,290.0	90.00	271.40	6,720.6	570.7	-3,618.5	3,647.9	0.38	-0.32	-0.21
10,385.0	91.70	270.70	6,719.2	572.4	-3,713.5	3,742.8	1.94	1.79	-0.74
10,481.0	92.00	270.60	6,716.1	573.5	-3,809.5	3,838.6	0.33	0.31	-0.10
10,576.0	91.10	268.60	6,713.6	572.8	-3,904.4	3,933.3	2.31	-0.95	-2.11
10,672.0	90.90	268.10	6,711.9	570.1	-4,000.4	4,028.9	0.56	-0.21	-0.52
10,767.0	90.90	267.80	6,710.4	566.7	-4,095.3	4,123.4	0.32	0.00	-0.32
10,863.0	91.00	268.30	6,708.8	563.4	-4,191.2	4,218.9	0.53	0.10	0.52
10,958.0	91.60	268.30	6,706.6	560.6	-4,286.2	4,313.5	0.63	0.63	0.00
11,054.0	89.30	268.30	6,705.9	557.7	-4,382.1	4,409.0	2.40	-2.40	0.00
11,149.0	89.40	267.90	6,707.0	554.6	-4,477.0	4,503.6	0.43	0.11	-0.42
11,245.0	90.30	267.10	6,707.2	550.4	-4,572.9	4,599.0	1.25	0.94	-0.83
11,341.0	88.00	267.40	6,708.6	545.8	-4,668.8	4,694.4	2.42	-2.40	0.31
11,436.0	87.90	267.20	6,712.0	541.3	-4,763.7	4,788.7	0.24	-0.11	-0.21
11,532.0	87.80	269.50	6,715.6	538.6	-4,859.5	4,884.2	2.40	-0.10	2.40
11,628.0	87.50	269.50	6,719.6	537.7	-4,955.5	4,979.9	0.31	-0.31	0.00
11,723.0	89.10	271.30	6,722.4	538.4	-5,050.4	5,074.7	2.53	1.68	1.89
11,818.0	88.70	271.40	6,724.2	540.6	-5,145.4	5,169.6	0.43	-0.42	0.11
11,914.0	91.10	271.10	6,724.4	542.7	-5,241.3	5,265.5	2.52	2.50	-0.31
12,009.0	90.90	271.10	6,722.7	544.5	-5,336.3	5,360.4	0.21	-0.21	0.00
12,104.0	90.70	270.90	6,721.4	546.2	-5,431.3	5,455.2	0.30	-0.21	-0.21
12,200.0	91.00	270.70	6,720.0	547.5	-5,527.3	5,551.1	0.38	0.31	-0.21
12,295.0	91.50	270.40	6,717.9	548.5	-5,622.2	5,645.9	0.61	0.53	-0.32
12,391.0	90.40	269.90	6,716.3	548.7	-5,718.2	5,741.7	1.26	-1.15	-0.52
12,486.0	90.80	269.50	6,715.3	548.2	-5,813.2	5,836.5	0.60	0.42	-0.42
12,581.0	91.50	269.00	6,713.4	547.0	-5,908.2	5,931.2	0.91	0.74	-0.53
12,676.0	89.90	269.00	6,712.2	545.3	-6,003.2	6,025.9	1.68	-1.68	0.00
12,771.0	90.70	268.80	6,711.7	543.5	-6,098.1	6,120.5	0.87	0.84	-0.21
12,866.0	89.00	270.00	6,712.0	542.5	-6,193.1	6,215.3	2.19	-1.79	1.26
12,962.0	89.10	269.30	6,713.6	541.9	-6,289.1	6,311.0	0.74	0.10	-0.73
13,057.0	90.60	269.50	6,713.8	540.9	-6,384.1	6,405.7	1.59	1.58	0.21
13,152.0	88.90	269.50	6,714.3	540.1	-6,479.1	6,500.5	1.79	-1.79	0.00
13,248.0	89.50	268.60	6,715.6	538.5	-6,575.1	6,596.1	1.13	0.63	-0.94
13,343.0	88.20	270.60	6,717.5	537.8	-6,670.0	6,690.9	2.51	-1.37	2.11
13,438.0	88.40	269.90	6,720.3	538.2	-6,765.0	6,785.7	0.77	0.21	-0.74

Company:	PDC Energy Inc. DJ Basin	Local Co-ordinate Reference:	Well Wacker 10F-304
Project:	Sec.10-T5N-R64W	TVD Reference:	WELL @ 4634.0ft (Ensign Rig #152 - RKB - 23')
Site:	Wacker 5N64W10G Pad Sec.10-T5N-R64W	MD Reference:	WELL @ 4634.0ft (Ensign Rig #152 - RKB - 23')
Well:	Wacker 10F-304	North Reference:	True
Wellbore:	Wacker 10F-304 Wellbore #1	Survey Calculation Method:	Minimum Curvature
Design:	Wacker 10F-304 Wellbore #1	Database:	US_EDM

Survey									
Measured Depth (ft)	Inclination (°)	Azimuth (°)	Vertical Depth (ft)	+N/-S (ft)	+E/-W (ft)	Vertical Section (ft)	Dogleg Rate (°/100usft)	Build Rate (°/100usft)	Turn Rate (°/100usft)
13,534.0	88.90	269.30	6,722.6	537.6	-6,861.0	6,881.4	0.81	0.52	-0.63
13,630.0	89.10	269.30	6,724.3	536.4	-6,956.9	6,977.1	0.21	0.21	0.00
13,725.0	89.00	268.80	6,725.8	534.8	-7,051.9	7,071.8	0.54	-0.11	-0.53
13,820.0	89.60	270.70	6,727.0	534.4	-7,146.9	7,166.5	2.10	0.63	2.00
13,916.0	90.10	270.70	6,727.2	535.6	-7,242.9	7,262.4	0.52	0.52	0.00
14,012.0	89.50	270.20	6,727.6	536.3	-7,338.9	7,358.2	0.81	-0.63	-0.52
14,108.0	89.40	269.20	6,728.5	535.8	-7,434.9	7,454.0	1.05	-0.10	-1.04
14,202.0	90.00	270.20	6,729.0	535.3	-7,528.9	7,547.7	1.24	0.64	1.06
14,298.0	90.10	269.50	6,728.9	535.1	-7,624.9	7,643.5	0.74	0.10	-0.73
14,393.0	90.40	267.40	6,728.5	532.5	-7,719.8	7,738.1	2.23	0.32	-2.21
14,488.0	90.20	268.30	6,728.0	529.0	-7,814.8	7,832.6	0.97	-0.21	0.95
14,584.0	90.60	270.00	6,727.3	527.5	-7,910.8	7,928.3	1.82	0.42	1.77
14,679.0	90.90	269.70	6,726.1	527.3	-8,005.7	8,023.1	0.45	0.32	-0.32
14,774.0	92.00	269.50	6,723.7	526.6	-8,100.7	8,117.8	1.18	1.16	-0.21
14,870.0	92.80	269.30	6,719.7	525.6	-8,196.6	8,213.5	0.86	0.83	-0.21
14,933.0	93.20	269.00	6,716.4	524.7	-8,259.5	8,276.2	0.79	0.63	-0.48
14,991.0	93.20	269.00	6,713.1	523.7	-8,317.4	8,333.9	0.00	0.00	0.00

Design Targets									
Target Name	Dip Angle (°)	Dip Dir. (°)	TVD (ft)	+N/-S (ft)	+E/-W (ft)	Northing (usft)	Easting (usft)	Latitude	Longitude
SHL 2032'FNL, 397'FWL - hit/miss target - Shape - survey hits target center - Point	0.00	0.00	1.0	0.0	0.0	1,395,614.60	3,266,123.33	40.415427	-104.544240
BHL 1465'FNL, 2645'FW - survey misses target center by 16.5ft at 14991.0ft MD (6713.1 TVD, 523.7 N, -8317.4 E) - Point	0.00	0.00	6,710.0	539.9	-8,318.2	1,396,064.75	3,257,800.13	40.416905	-104.574113

Survey Annotations				
Measured Depth (ft)	Vertical Depth (ft)	Local Coordinates		Comment
		+N/-S (ft)	+E/-W (ft)	
7,431.0	6,743.0	594.4	-760.4	Deepest TVD Drilled - 6743.0' TVD

Checked By: _____ Approved By: _____ Date: _____