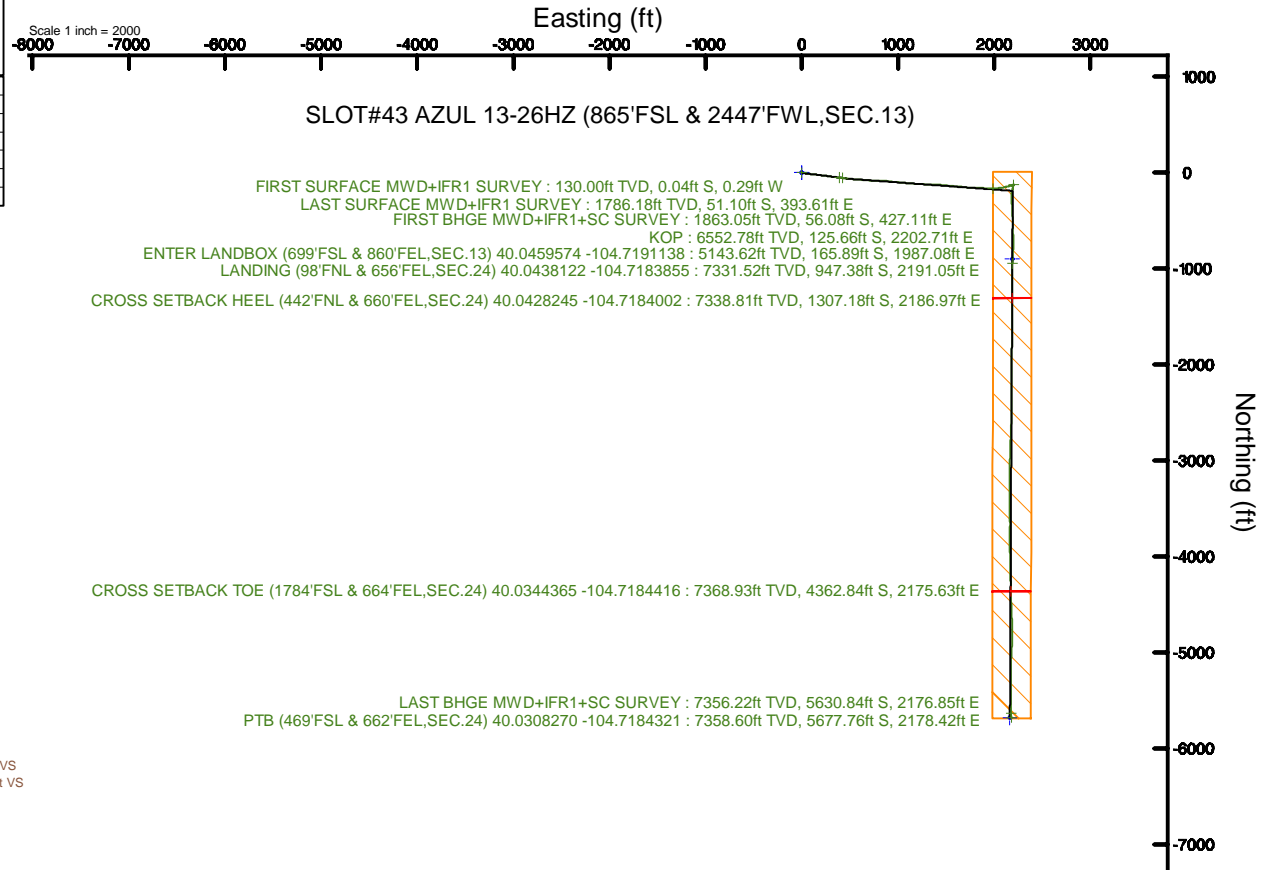
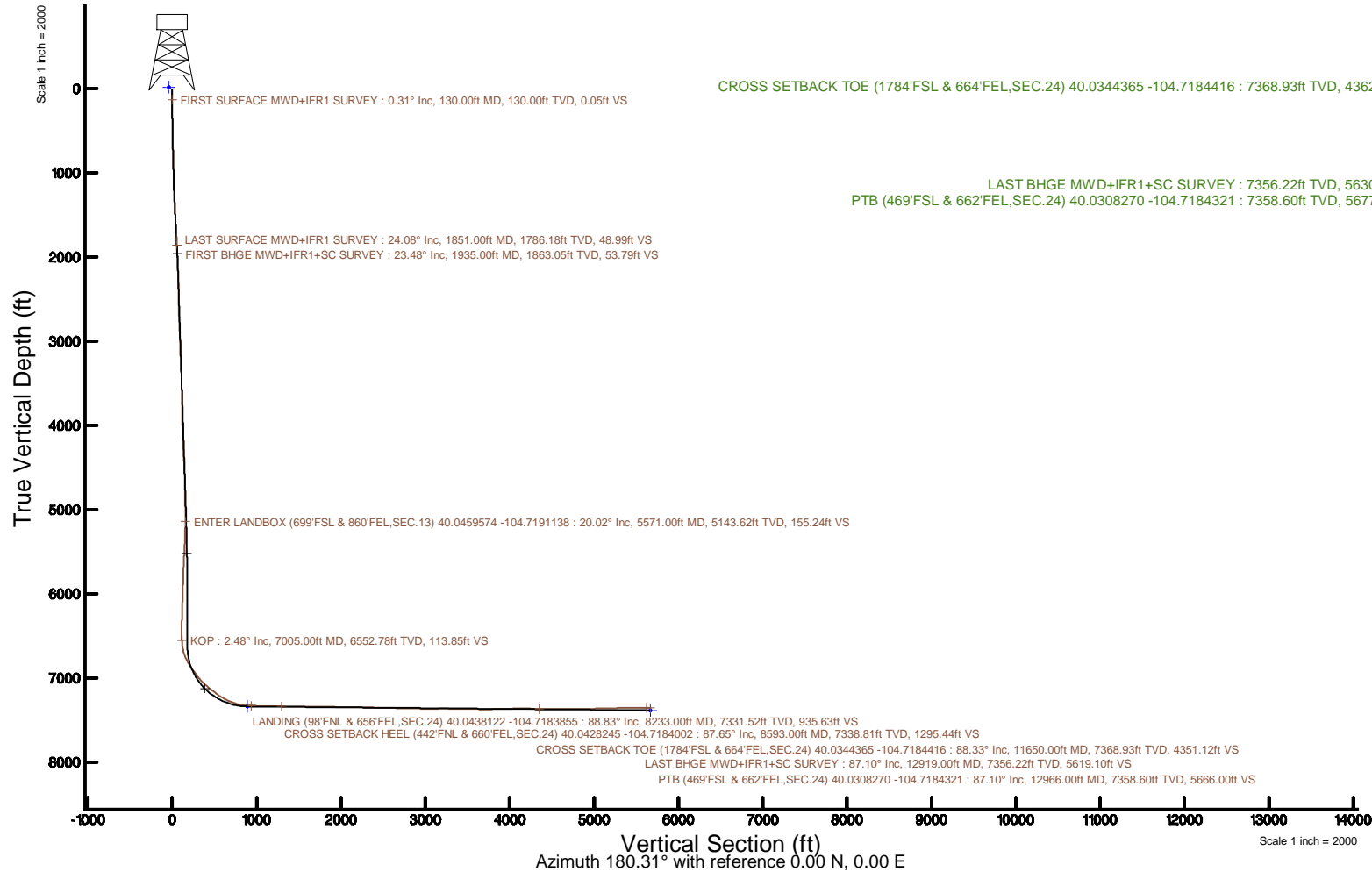


KERR-MCGEE OIL & GAS ONSHORE LP (WA)

Location: COLORADO Slot: SLOT#43 AZUL 13-26HZ (865'FSL & 2447'FWL,SEC.13)
Field: WELD COUNTY (UTM/TRUE NORTH)/Well: AZUL 13-26HZ
Facility: SEC-13-T1N-R66W Wellbore: AZUL 13-26HZ PWB

| | |
|--|--|
| Plot reference wellpath is AZUL 13-26HZ PWP Rev-A.0 | Grid System: NAD83 / UTM Zone 13 North, US feet |
| True vertical depths are referenced to PD 464 (21') (RT) | * = Wellpath was transformed from a different geodetic datum |
| Measured depths are referenced to PD 464 (21') (RT) | North Reference: True north |
| PD 464 (21') (RT) to Mean Sea Level: 5071 feet | Scale: True distance |
| Mean Sea Level to Mud line (At Slot: SLOT#43 AZUL 13-26HZ (865'FSL & 2447'FWL,SEC.13)): 0 feet | Depths are in feet |
| Coordinates are in feet referenced to Slot | Created by: painsetr on 2018-03-23 |
| | Database: WA, DEN, Anadarko, Delfin |



Actual Wellpath Report

AZUL 13-26HZ AWP

Page 1 of 7

| REFERENCE WELLPATH IDENTIFICATION | | | |
|-----------------------------------|--------------------------------------|----------|--|
| Operator | KERR-MCGEE OIL & GAS ONSHORE LP (WA) | Slot | SLOT#43 AZUL 13-26HZ (865'FSL & 2447'FWL,SEC.13) |
| Area | COLORADO | Well | AZUL 13-26HZ |
| Field | WELD COUNTY (UTM/TRUE NORTH) | Wellbore | AZUL 13-26HZ AWB |
| Facility | SEC.13-T1N-R66W | | |

| REPORT SETUP INFORMATION | | | |
|--------------------------|------------------------------------|----------------------|---|
| Projection System | NAD83 / UTM Zone 13 North, US feet | Software System | WellArchitect® 5.0 |
| North Reference | True | User | Painsetr |
| Scale | 0.999607 | Report Generated | 3/23/2018 at 9:56 AM |
| Convergence at slot | 0.18° East | Database/Source file | WA_DEN_Anadarko_Defn/AZUL_13-26HZ_AWP.xml |

| WELLPATH LOCATION | | | | | | |
|-----------------------|-------------------|----------|------------------|-----------------|------------------------|-----------------|
| | Local coordinates | | Grid coordinates | | Geographic coordinates | |
| | North[ft] | East[ft] | Easting[US ft] | Northing[US ft] | Latitude | Longitude |
| Slot Location | -4204.21 | -443.76 | 1717039.62 | 14543752.20 | 40°02'47.087"N | 104°43'34.360"W |
| Facility Reference Pt | | | 1717470.20 | 14547956.10 | 40°03'28.634"N | 104°43'28.654"W |
| Field Reference Pt | | | 1698235.31 | 14552047.82 | 40°04'09.600"N | 104°47'36.000"W |

| WELLPATH DATUM | | | |
|--------------------------|-------------------|--|-------------------|
| Calculation method | Minimum curvature | PD 464 (21') (RT) to Facility Vertical Datum | 5071.00ft |
| Horizontal Reference Pt | Slot | PD 464 (21') (RT) to Mean Sea Level | 5071.00ft |
| Vertical Reference Pt | PD 464 (21') (RT) | PD 464 (21') (RT) to Mud Line at Slot (SLOT#43 AZUL 13-26HZ (865'FSL & 2447'FWL,SEC.13)) | 5071.00ft |
| MD Reference Pt | PD 464 (21') (RT) | Section Origin | N 0.00, E 0.00 ft |
| Field Vertical Reference | Mean Sea Level | Section Azimuth | 180.31° |

| REFERENCE WELLPATH IDENTIFICATION | | | |
|-----------------------------------|--------------------------------------|----------|---|
| Operator | KERR-MCGEE OIL & GAS ONSHORE LP (WA) | Slot | SLOT#43 AZUL 13-26HZ (865'FSL & 2447'FWL, SEC.13) |
| Area | COLORADO | Well | AZUL 13-26HZ |
| Field | WELD COUNTY (UTM/TRUE NORTH) | Wellbore | AZUL 13-26HZ AWB |
| Facility | SEC.13-T1N-R66W | | |

| WELLPATH DATA (186 stations) † = interpolated/extrapolated station | | | | | | | | | | | | |
|--|-----------------|-------------|----------|----------------|------------|-----------|-------------------|--------------------|----------------|-----------------|---------------|-------------------------------|
| MD [ft] | Inclination [°] | Azimuth [°] | TVD [ft] | Vert Sect [ft] | North [ft] | East [ft] | Grid East [US ft] | Grid North [US ft] | Latitude | Longitude | DLS [°/100ft] | Comments |
| 0.00† | 0.000 | 261.490 | 0.00 | 0.00 | 0.00 | 0.00 | 1717039.62 | 14543752.20 | 40°02'47.087"N | 104°43'34.360"W | 0.00 | |
| 21.00 | 0.000 | 261.490 | 21.00 | 0.00 | 0.00 | 0.00 | 1717039.62 | 14543752.20 | 40°02'47.087"N | 104°43'34.360"W | 0.00 | |
| 130.00 | 0.310 | 261.490 | 130.00 | 0.05 | -0.04 | -0.29 | 1717039.33 | 14543752.16 | 40°02'47.087"N | 104°43'34.364"W | 0.28 | FIRST SURFACE MWD+IFR1 SURVEY |
| 162.00 | 0.350 | 278.100 | 162.00 | 0.05 | -0.04 | -0.47 | 1717039.14 | 14543752.16 | 40°02'47.087"N | 104°43'34.366"W | 0.32 | |
| 194.00 | 0.130 | 37.810 | 194.00 | 0.00 | 0.00 | -0.55 | 1717039.07 | 14543752.20 | 40°02'47.087"N | 104°43'34.367"W | 1.34 | |
| 226.00 | 0.220 | 87.730 | 226.00 | -0.03 | 0.03 | -0.46 | 1717039.15 | 14543752.23 | 40°02'47.087"N | 104°43'34.366"W | 0.53 | |
| 257.00 | 0.790 | 110.490 | 257.00 | 0.04 | -0.04 | -0.21 | 1717039.41 | 14543752.16 | 40°02'47.087"N | 104°43'34.363"W | 1.91 | |
| 289.00 | 0.830 | 100.120 | 288.99 | 0.16 | -0.16 | 0.23 | 1717039.85 | 14543752.04 | 40°02'47.085"N | 104°43'34.357"W | 0.47 | |
| 320.00 | 1.230 | 111.200 | 319.99 | 0.32 | -0.32 | 0.76 | 1717040.38 | 14543751.89 | 40°02'47.084"N | 104°43'34.350"W | 1.44 | |
| 352.00 | 1.490 | 110.840 | 351.98 | 0.58 | -0.59 | 1.47 | 1717041.09 | 14543751.62 | 40°02'47.081"N | 104°43'34.341"W | 0.81 | |
| 383.00 | 1.800 | 110.840 | 382.97 | 0.90 | -0.91 | 2.30 | 1717041.92 | 14543751.30 | 40°02'47.078"N | 104°43'34.330"W | 1.00 | |
| 415.00 | 3.080 | 104.690 | 414.94 | 1.29 | -1.30 | 3.60 | 1717043.22 | 14543750.91 | 40°02'47.074"N | 104°43'34.314"W | 4.08 | |
| 446.00 | 3.560 | 104.780 | 445.89 | 1.73 | -1.76 | 5.34 | 1717044.96 | 14543750.46 | 40°02'47.070"N | 104°43'34.291"W | 1.55 | |
| 478.00 | 4.440 | 101.970 | 477.81 | 2.23 | -2.27 | 7.51 | 1717047.13 | 14543749.95 | 40°02'47.065"N | 104°43'34.263"W | 2.82 | |
| 509.00 | 5.320 | 101.000 | 508.69 | 2.74 | -2.80 | 10.10 | 1717049.72 | 14543749.44 | 40°02'47.059"N | 104°43'34.230"W | 2.85 | |
| 541.00 | 6.150 | 100.300 | 540.53 | 3.31 | -3.38 | 13.24 | 1717052.86 | 14543748.86 | 40°02'47.054"N | 104°43'34.190"W | 2.60 | |
| 573.00 | 6.420 | 101.530 | 572.34 | 3.96 | -4.05 | 16.68 | 1717056.30 | 14543748.21 | 40°02'47.047"N | 104°43'34.146"W | 0.94 | |
| 605.00 | 6.640 | 99.510 | 604.13 | 4.60 | -4.71 | 20.26 | 1717059.88 | 14543747.55 | 40°02'47.040"N | 104°43'34.100"W | 0.99 | |
| 637.00 | 6.900 | 99.680 | 635.91 | 5.21 | -5.34 | 23.98 | 1717063.60 | 14543746.94 | 40°02'47.034"N | 104°43'34.052"W | 0.81 | |
| 668.00 | 7.510 | 99.420 | 666.67 | 5.84 | -5.99 | 27.81 | 1717067.43 | 14543746.30 | 40°02'47.028"N | 104°43'34.002"W | 1.97 | |
| 700.00 | 8.700 | 99.150 | 698.35 | 6.54 | -6.71 | 32.26 | 1717071.89 | 14543745.59 | 40°02'47.021"N | 104°43'33.945"W | 3.72 | |
| 732.00 | 9.670 | 100.210 | 729.94 | 7.37 | -7.57 | 37.30 | 1717076.92 | 14543744.75 | 40°02'47.012"N | 104°43'33.880"W | 3.08 | |
| 764.00 | 10.200 | 97.840 | 761.46 | 8.21 | -8.44 | 42.75 | 1717082.38 | 14543743.90 | 40°02'47.004"N | 104°43'33.810"W | 2.09 | |
| 795.00 | 10.550 | 98.540 | 791.95 | 8.97 | -9.23 | 48.27 | 1717087.90 | 14543743.12 | 40°02'46.996"N | 104°43'33.739"W | 1.20 | |
| 827.00 | 11.210 | 98.450 | 823.37 | 9.83 | -10.12 | 54.25 | 1717093.88 | 14543742.25 | 40°02'46.987"N | 104°43'33.662"W | 2.06 | |
| 859.00 | 12.040 | 97.130 | 854.72 | 10.67 | -11.00 | 60.64 | 1717100.26 | 14543741.40 | 40°02'46.978"N | 104°43'33.580"W | 2.72 | |
| 891.00 | 12.390 | 97.050 | 885.99 | 11.47 | -11.83 | 67.36 | 1717106.98 | 14543740.58 | 40°02'46.970"N | 104°43'33.494"W | 1.10 | |
| 922.00 | 13.270 | 97.130 | 916.22 | 12.28 | -12.68 | 74.19 | 1717113.81 | 14543739.75 | 40°02'46.962"N | 104°43'33.406"W | 2.84 | |
| 954.00 | 13.890 | 97.840 | 947.32 | 13.22 | -13.66 | 81.64 | 1717121.26 | 14543738.80 | 40°02'46.952"N | 104°43'33.310"W | 2.01 | |
| 986.00 | 14.630 | 96.430 | 978.34 | 14.16 | -14.64 | 89.46 | 1717129.08 | 14543737.85 | 40°02'46.942"N | 104°43'33.210"W | 2.55 | |
| 1018.00 | 15.340 | 95.730 | 1009.25 | 14.99 | -15.51 | 97.68 | 1717137.31 | 14543737.00 | 40°02'46.934"N | 104°43'33.104"W | 2.29 | |
| 1049.00 | 15.910 | 95.460 | 1039.10 | 15.76 | -16.33 | 105.99 | 1717145.62 | 14543736.21 | 40°02'46.926"N | 104°43'32.997"W | 1.85 | |
| 1081.00 | 17.180 | 95.810 | 1069.78 | 16.61 | -17.22 | 115.06 | 1717154.69 | 14543735.34 | 40°02'46.917"N | 104°43'32.880"W | 3.98 | |
| 1113.00 | 17.750 | 95.990 | 1100.30 | 17.54 | -18.21 | 124.62 | 1717164.24 | 14543734.38 | 40°02'46.907"N | 104°43'32.758"W | 1.79 | |
| 1144.00 | 18.370 | 95.380 | 1129.77 | 18.44 | -19.16 | 134.18 | 1717173.80 | 14543733.46 | 40°02'46.898"N | 104°43'32.635"W | 2.09 | |
| 1176.00 | 19.070 | 95.020 | 1160.08 | 19.32 | -20.09 | 144.41 | 1717184.03 | 14543732.56 | 40°02'46.888"N | 104°43'32.503"W | 2.22 | |
| 1208.00 | 19.860 | 94.850 | 1190.25 | 20.18 | -21.01 | 155.03 | 1717194.65 | 14543731.68 | 40°02'46.879"N | 104°43'32.367"W | 2.48 | |
| 1240.00 | 19.200 | 97.660 | 1220.41 | 21.28 | -22.17 | 165.66 | 1717205.28 | 14543730.55 | 40°02'46.868"N | 104°43'32.230"W | 3.59 | |
| 1272.00 | 18.980 | 99.070 | 1250.65 | 22.75 | -23.69 | 176.02 | 1717215.64 | 14543729.06 | 40°02'46.853"N | 104°43'32.097"W | 1.60 | |
| 1303.00 | 19.070 | 98.980 | 1279.96 | 24.28 | -25.28 | 186.00 | 1717225.62 | 14543727.51 | 40°02'46.837"N | 104°43'31.968"W | 0.31 | |
| 1335.00 | 19.690 | 97.750 | 1310.15 | 25.77 | -26.82 | 196.50 | 1717236.12 | 14543726.00 | 40°02'46.822"N | 104°43'31.833"W | 2.32 | |
| 1367.00 | 19.910 | 97.750 | 1340.25 | 27.17 | -28.28 | 207.24 | 1717246.86 | 14543724.57 | 40°02'46.808"N | 104°43'31.695"W | 0.69 | |
| 1399.00 | 20.390 | 97.310 | 1370.30 | 28.56 | -29.73 | 218.17 | 1717257.79 | 14543723.16 | 40°02'46.793"N | 104°43'31.555"W | 1.57 | |
| 1430.00 | 20.700 | 96.960 | 1399.32 | 29.85 | -31.08 | 228.96 | 1717268.59 | 14543721.84 | 40°02'46.780"N | 104°43'31.416"W | 1.08 | |
| 1462.00 | 21.180 | 95.550 | 1429.21 | 31.03 | -32.32 | 240.33 | 1717279.95 | 14543720.63 | 40°02'46.768"N | 104°43'31.270"W | 2.17 | |

| REFERENCE WELLPATH IDENTIFICATION | | | |
|-----------------------------------|--------------------------------------|----------|---|
| Operator | KERR-MCGEE OIL & GAS ONSHORE LP (WA) | Slot | SLOT#43 AZUL 13-26HZ (865'FSL & 2447'FWL, SEC.13) |
| Area | COLORADO | Well | AZUL 13-26HZ |
| Field | WELD COUNTY (UTM/TRUE NORTH) | Wellbore | AZUL 13-26HZ AWB |
| Facility | SEC.13-T1N-R66W | | |

WELLPATH DATA (186 stations)

| MD [ft] | Inclination [°] | Azimuth [°] | TVD [ft] | Vert Sect [ft] | North [ft] | East [ft] | Grid East [US ft] | Grid North [US ft] | Latitude | Longitude | DLS [°/100ft] | Comments |
|------------|--------------------|----------------|-------------|-------------------|---------------|--------------|----------------------|-----------------------|----------------|-----------------|------------------|-------------------------------|
| 1494.00 | 21.660 | 96.170 | 1459.00 | 32.16 | -33.51 | 251.96 | 1717291.58 | 14543719.48 | 40°02'46.756"N | 104°43'31.120"W | 1.66 | |
| 1525.00 | 22.540 | 97.920 | 1487.72 | 33.54 | -34.95 | 263.53 | 1717303.15 | 14543718.08 | 40°02'46.742"N | 104°43'30.971"W | 3.54 | |
| 1557.00 | 23.120 | 98.280 | 1517.22 | 35.22 | -36.70 | 275.82 | 1717315.44 | 14543716.37 | 40°02'46.724"N | 104°43'30.813"W | 1.86 | |
| 1588.00 | 23.690 | 98.190 | 1545.66 | 36.92 | -38.46 | 288.01 | 1717327.63 | 14543714.64 | 40°02'46.707"N | 104°43'30.657"W | 1.84 | |
| 1620.00 | 24.300 | 97.400 | 1574.90 | 38.61 | -40.23 | 300.90 | 1717340.52 | 14543712.92 | 40°02'46.689"N | 104°43'30.491"W | 2.15 | |
| 1652.00 | 23.380 | 97.570 | 1604.17 | 40.23 | -41.91 | 313.73 | 1717353.35 | 14543711.27 | 40°02'46.673"N | 104°43'30.326"W | 2.88 | |
| 1684.00 | 23.200 | 97.130 | 1633.56 | 41.78 | -43.53 | 326.27 | 1717365.89 | 14543709.69 | 40°02'46.657"N | 104°43'30.165"W | 0.78 | |
| 1715.00 | 23.160 | 96.780 | 1662.06 | 43.19 | -45.01 | 338.39 | 1717378.01 | 14543708.25 | 40°02'46.642"N | 104°43'30.009"W | 0.46 | |
| 1747.00 | 23.250 | 96.430 | 1691.47 | 44.58 | -46.46 | 350.91 | 1717390.53 | 14543706.84 | 40°02'46.628"N | 104°43'29.848"W | 0.51 | |
| 1779.00 | 24.300 | 95.640 | 1720.75 | 45.86 | -47.81 | 363.74 | 1717403.36 | 14543705.53 | 40°02'46.614"N | 104°43'29.683"W | 3.43 | |
| 1811.00 | 25.050 | 95.640 | 1749.83 | 47.10 | -49.12 | 377.03 | 1717416.65 | 14543704.26 | 40°02'46.602"N | 104°43'29.512"W | 2.34 | |
| 1843.00 | 24.480 | 97.400 | 1778.89 | 48.55 | -50.64 | 390.35 | 1717429.97 | 14543702.78 | 40°02'46.586"N | 104°43'29.341"W | 2.91 | |
| 1851.00 | 24.080 | 98.540 | 1786.18 | 48.99 | -51.10 | 393.61 | 1717433.23 | 14543702.33 | 40°02'46.582"N | 104°43'29.299"W | 7.70 | LAST SURFACE MWD+IFR1 SURVEY |
| 1935.00 | 23.480 | 98.380 | 1863.05 | 53.79 | -56.08 | 427.11 | 1717466.73 | 14543697.45 | 40°02'46.533"N | 104°43'28.868"W | 0.72 | FIRST BHGE MWD+IFR1+SC SURVEY |
| 2024.00 | 26.590 | 97.010 | 1943.68 | 58.61 | -61.10 | 464.43 | 1717504.05 | 14543692.56 | 40°02'46.483"N | 104°43'28.388"W | 3.55 | |
| 2114.00 | 27.790 | 95.250 | 2023.73 | 62.77 | -65.48 | 505.32 | 1717544.93 | 14543688.30 | 40°02'46.440"N | 104°43'27.862"W | 1.60 | |
| 2204.00 | 27.320 | 94.200 | 2103.52 | 65.98 | -68.91 | 546.81 | 1717586.42 | 14543685.00 | 40°02'46.406"N | 104°43'27.329"W | 0.75 | |
| 2293.00 | 26.140 | 92.360 | 2183.01 | 68.07 | -71.21 | 586.77 | 1717626.37 | 14543682.82 | 40°02'46.383"N | 104°43'26.815"W | 1.62 | |
| 2383.00 | 25.420 | 98.100 | 2264.07 | 71.40 | -74.75 | 625.71 | 1717665.30 | 14543679.40 | 40°02'46.348"N | 104°43'26.314"W | 2.89 | |
| 2473.00 | 27.300 | 94.260 | 2344.71 | 75.44 | -79.01 | 665.42 | 1717705.01 | 14543675.27 | 40°02'46.306"N | 104°43'25.804"W | 2.82 | |
| 2562.00 | 25.830 | 92.510 | 2424.32 | 77.59 | -81.37 | 705.14 | 1717744.73 | 14543673.03 | 40°02'46.283"N | 104°43'25.293"W | 1.87 | |
| 2652.00 | 24.550 | 91.130 | 2505.76 | 78.62 | -82.60 | 743.43 | 1717783.00 | 14543671.92 | 40°02'46.271"N | 104°43'24.801"W | 1.56 | |
| 2742.00 | 25.230 | 90.300 | 2587.40 | 78.88 | -83.07 | 781.30 | 1717820.86 | 14543671.57 | 40°02'46.266"N | 104°43'24.314"W | 0.85 | |
| 2831.00 | 26.400 | 93.200 | 2667.52 | 79.88 | -84.27 | 820.03 | 1717859.58 | 14543670.48 | 40°02'46.254"N | 104°43'23.816"W | 1.93 | |
| 2921.00 | 24.990 | 91.470 | 2748.62 | 81.27 | -85.88 | 859.01 | 1717898.55 | 14543669.00 | 40°02'46.238"N | 104°43'23.315"W | 1.77 | |
| 3011.00 | 24.940 | 96.210 | 2830.21 | 83.61 | -88.42 | 896.89 | 1717936.42 | 14543666.58 | 40°02'46.213"N | 104°43'22.828"W | 2.22 | |
| 3101.00 | 25.660 | 98.570 | 2911.58 | 88.36 | -93.37 | 935.02 | 1717974.55 | 14543661.74 | 40°02'46.164"N | 104°43'22.337"W | 1.38 | |
| 3190.00 | 27.280 | 95.230 | 2991.26 | 92.88 | -98.11 | 974.39 | 1718013.92 | 14543657.13 | 40°02'46.117"N | 104°43'21.831"W | 2.47 | |
| 3280.00 | 25.730 | 93.900 | 3071.79 | 95.88 | -101.31 | 1014.42 | 1718053.95 | 14543654.05 | 40°02'46.086"N | 104°43'21.316"W | 1.84 | |
| 3370.00 | 26.770 | 95.750 | 3152.51 | 99.03 | -104.67 | 1054.08 | 1718093.60 | 14543650.81 | 40°02'46.052"N | 104°43'20.806"W | 1.47 | |
| 3459.00 | 26.960 | 94.910 | 3231.91 | 102.55 | -108.41 | 1094.13 | 1718133.64 | 14543647.20 | 40°02'46.015"N | 104°43'20.291"W | 0.48 | |
| 3549.00 | 26.710 | 94.580 | 3312.22 | 105.69 | -111.77 | 1134.61 | 1718174.12 | 14543643.96 | 40°02'45.982"N | 104°43'19.771"W | 0.32 | |
| 3638.00 | 26.360 | 96.270 | 3391.84 | 109.23 | -115.53 | 1174.19 | 1718213.70 | 14543640.33 | 40°02'45.945"N | 104°43'19.262"W | 0.93 | |
| 3728.00 | 25.470 | 91.500 | 3472.80 | 111.71 | -118.21 | 1213.40 | 1718252.90 | 14543637.76 | 40°02'45.918"N | 104°43'18.758"W | 2.52 | |
| 3817.00 | 24.320 | 93.790 | 3553.53 | 113.22 | -119.93 | 1250.82 | 1718290.31 | 14543636.17 | 40°02'45.902"N | 104°43'18.277"W | 1.69 | |
| 3907.00 | 24.070 | 91.350 | 3635.63 | 114.68 | -121.58 | 1287.66 | 1718327.14 | 14543634.62 | 40°02'45.885"N | 104°43'17.803"W | 1.15 | |
| 3997.00 | 23.620 | 91.630 | 3717.94 | 115.43 | -122.53 | 1324.04 | 1718363.50 | 14543633.79 | 40°02'45.876"N | 104°43'17.335"W | 0.52 | |
| 4087.00 | 24.620 | 92.800 | 3800.09 | 116.67 | -123.96 | 1360.78 | 1718400.24 | 14543632.48 | 40°02'45.862"N | 104°43'16.863"W | 1.23 | |
| 4176.00 | 25.710 | 91.110 | 3880.64 | 117.74 | -125.24 | 1398.60 | 1718438.05 | 14543631.31 | 40°02'45.849"N | 104°43'16.376"W | 1.47 | |
| 4266.00 | 26.370 | 93.510 | 3961.50 | 119.13 | -126.84 | 1438.07 | 1718477.50 | 14543629.83 | 40°02'45.833"N | 104°43'15.869"W | 1.38 | |
| 4355.00 | 27.750 | 97.060 | 4040.76 | 122.67 | -130.60 | 1478.37 | 1718517.80 | 14543626.20 | 40°02'45.796"N | 104°43'15.351"W | 2.39 | |
| 4445.00 | 26.090 | 95.140 | 4121.01 | 126.81 | -134.95 | 1518.88 | 1718558.30 | 14543621.98 | 40°02'45.753"N | 104°43'14.830"W | 2.08 | |
| 4558.00 | 25.860 | 95.340 | 4222.60 | 131.06 | -139.47 | 1568.16 | 1718607.58 | 14543617.61 | 40°02'45.708"N | 104°43'14.196"W | 0.22 | |
| 4648.00 | 26.600 | 93.690 | 4303.33 | 133.97 | -142.59 | 1607.81 | 1718647.22 | 14543614.61 | 40°02'45.677"N | 104°43'13.686"W | 1.15 | |
| 4738.00 | 27.700 | 96.930 | 4383.42 | 137.57 | -146.41 | 1648.69 | 1718688.10 | 14543610.92 | 40°02'45.640"N | 104°43'13.161"W | 2.05 | |

| REFERENCE WELLPATH IDENTIFICATION | | | |
|-----------------------------------|--------------------------------------|----------|---|
| Operator | KERR-MCGEE OIL & GAS ONSHORE LP (WA) | Slot | SLOT#43 AZUL 13-26HZ (865'FSL & 2447'FWL, SEC.13) |
| Area | COLORADO | Well | AZUL 13-26HZ |
| Field | WELD COUNTY (UTM/TRUE NORTH) | Wellbore | AZUL 13-26HZ AWB |
| Facility | SEC.13-T1N-R66W | | |

| WELLPATH DATA (186 stations) † = interpolated/extrapolated station | | | | | | | | | | | | |
|--|--------------------|----------------|-------------|-------------------|---------------|--------------|----------------------|-----------------------|----------------|-----------------|------------------|---|
| MD [ft] | Inclination [°] | Azimuth [°] | TVD [ft] | Vert Sect [ft] | North [ft] | East [ft] | Grid East [US ft] | Grid North [US ft] | Latitude | Longitude | DLS [°/100ft] | Comments |
| 4827.00 | 26.250 | 96.670 | 4462.73 | 142.14 | -151.19 | 1688.77 | 1718728.18 | 14543606.26 | 40°02'45.592"N | 104°43'12.645"W | 1.63 | |
| 4917.00 | 23.590 | 95.730 | 4544.34 | 146.05 | -155.30 | 1726.47 | 1718765.87 | 14543602.27 | 40°02'45.552"N | 104°43'12.161"W | 2.99 | |
| 5006.00 | 23.940 | 91.690 | 4625.80 | 148.17 | -157.61 | 1762.24 | 1718801.64 | 14543600.07 | 40°02'45.529"N | 104°43'11.701"W | 1.87 | |
| 5096.00 | 26.210 | 89.050 | 4707.32 | 148.17 | -157.82 | 1800.37 | 1718839.75 | 14543599.98 | 40°02'45.527"N | 104°43'11.210"W | 2.81 | |
| 5186.00 | 25.830 | 89.820 | 4788.20 | 147.57 | -157.43 | 1839.85 | 1718879.21 | 14543600.49 | 40°02'45.531"N | 104°43'10.703"W | 0.56 | |
| 5276.00 | 23.010 | 95.940 | 4870.15 | 149.13 | -159.19 | 1876.96 | 1718916.32 | 14543598.84 | 40°02'45.513"N | 104°43'10.226"W | 4.21 | |
| 5365.00 | 23.200 | 97.600 | 4952.01 | 153.06 | -163.31 | 1911.64 | 1718951.00 | 14543594.83 | 40°02'45.472"N | 104°43'09.780"W | 0.76 | |
| 5455.00 | 21.330 | 92.340 | 5035.31 | 155.90 | -166.32 | 1945.57 | 1718984.92 | 14543591.93 | 40°02'45.443"N | 104°43'09.343"W | 3.03 | |
| 5545.00 | 20.930 | 87.530 | 5119.26 | 155.70 | -166.30 | 1977.99 | 1719017.33 | 14543592.05 | 40°02'45.443"N | 104°43'08.926"W | 1.98 | |
| 5571.00† | 20.024 | 87.360 | 5143.62 | 155.24 | -165.89 | 1987.08 | 1719026.41 | 14543592.48 | 40°02'45.447"N | 104°43'08.810"W | 3.49 | ENTER LANDBOX (699'FSL & 860'FEL, SEC.13) 40.0459574 -104.7191138 |
| 5634.00 | 17.830 | 86.880 | 5203.21 | 154.11 | -164.87 | 2007.49 | 1719046.81 | 14543593.57 | 40°02'45.457"N | 104°43'08.547"W | 3.49 | |
| 5724.00 | 16.670 | 83.520 | 5289.16 | 151.76 | -162.66 | 2034.07 | 1719073.38 | 14543595.85 | 40°02'45.479"N | 104°43'08.205"W | 1.70 | |
| 5814.00 | 16.060 | 82.670 | 5375.51 | 148.58 | -159.62 | 2059.25 | 1719098.53 | 14543598.98 | 40°02'45.509"N | 104°43'07.882"W | 0.73 | |
| 5903.00 | 15.660 | 81.550 | 5461.13 | 145.12 | -156.28 | 2083.34 | 1719122.60 | 14543602.38 | 40°02'45.542"N | 104°43'07.572"W | 0.57 | |
| 5993.00 | 13.560 | 76.680 | 5548.21 | 140.78 | -152.07 | 2105.62 | 1719144.87 | 14543606.67 | 40°02'45.583"N | 104°43'07.285"W | 2.70 | |
| 6083.00 | 10.960 | 75.190 | 5636.15 | 136.07 | -147.45 | 2124.16 | 1719163.39 | 14543611.34 | 40°02'45.629"N | 104°43'07.047"W | 2.91 | |
| 6173.00 | 9.580 | 79.150 | 5724.71 | 132.38 | -143.85 | 2139.79 | 1719179.00 | 14543614.98 | 40°02'45.665"N | 104°43'06.846"W | 1.72 | |
| 6262.00 | 8.740 | 80.580 | 5812.58 | 129.81 | -141.35 | 2153.74 | 1719192.93 | 14543617.53 | 40°02'45.689"N | 104°43'06.667"W | 0.98 | |
| 6352.00 | 7.410 | 74.330 | 5901.68 | 127.06 | -138.66 | 2166.07 | 1719205.25 | 14543620.25 | 40°02'45.716"N | 104°43'06.508"W | 1.77 | |
| 6441.00 | 6.050 | 73.260 | 5990.07 | 124.10 | -135.76 | 2176.09 | 1719215.25 | 14543623.18 | 40°02'45.744"N | 104°43'06.379"W | 1.53 | |
| 6531.00 | 5.370 | 65.210 | 6079.62 | 120.92 | -132.63 | 2184.45 | 1719223.60 | 14543626.34 | 40°02'45.775"N | 104°43'06.272"W | 1.17 | |
| 6620.00 | 5.090 | 66.520 | 6168.25 | 117.57 | -129.31 | 2191.86 | 1719230.99 | 14543629.68 | 40°02'45.808"N | 104°43'06.177"W | 0.34 | |
| 6710.00 | 3.880 | 68.090 | 6257.97 | 114.80 | -126.58 | 2198.34 | 1719237.47 | 14543632.42 | 40°02'45.835"N | 104°43'06.093"W | 1.35 | |
| 6799.00 | 2.620 | 82.730 | 6346.83 | 113.40 | -125.20 | 2203.15 | 1719242.28 | 14543633.82 | 40°02'45.849"N | 104°43'06.031"W | 1.68 | |
| 6889.00 | 0.770 | 261.390 | 6436.81 | 113.22 | -125.03 | 2204.60 | 1719243.72 | 14543633.99 | 40°02'45.850"N | 104°43'06.013"W | 3.77 | |
| 6978.00 | 0.980 | 268.030 | 6525.80 | 113.34 | -125.15 | 2203.25 | 1719242.37 | 14543633.87 | 40°02'45.849"N | 104°43'06.030"W | 0.26 | |
| 7005.00† | 2.480 | 211.012 | 6552.78 | 113.85 | -125.66 | 2202.71 | 1719241.84 | 14543633.36 | 40°02'45.844"N | 104°43'06.037"W | 7.83 | KOP |
| 7068.00 | 7.280 | 195.710 | 6615.54 | 118.88 | -130.67 | 2200.93 | 1719240.07 | 14543628.35 | 40°02'45.795"N | 104°43'06.060"W | 7.83 | |
| 7158.00 | 18.270 | 195.740 | 6703.18 | 138.03 | -149.80 | 2195.54 | 1719234.74 | 14543609.21 | 40°02'45.606"N | 104°43'06.129"W | 12.21 | |
| 7248.00 | 26.440 | 194.020 | 6786.34 | 171.15 | -182.87 | 2186.85 | 1719226.15 | 14543576.12 | 40°02'45.279"N | 104°43'06.241"W | 9.11 | |
| 7337.00 | 33.990 | 184.100 | 6863.24 | 215.32 | -227.00 | 2180.25 | 1719219.70 | 14543531.99 | 40°02'44.843"N | 104°43'06.326"W | 10.14 | |
| 7427.00 | 35.940 | 175.160 | 6937.05 | 266.76 | -278.45 | 2180.68 | 1719220.28 | 14543480.56 | 40°02'44.334"N | 104°43'06.320"W | 6.09 | |
| 7516.00 | 37.790 | 176.390 | 7008.25 | 319.99 | -331.70 | 2184.60 | 1719224.37 | 14543427.35 | 40°02'43.808"N | 104°43'06.270"W | 2.24 | |
| 7606.00 | 47.900 | 176.700 | 7074.15 | 380.98 | -392.71 | 2188.27 | 1719228.22 | 14543366.38 | 40°02'43.205"N | 104°43'06.223"W | 11.24 | |
| 7695.00 | 52.990 | 177.790 | 7130.81 | 449.48 | -461.23 | 2191.55 | 1719231.70 | 14543297.90 | 40°02'42.528"N | 104°43'06.181"W | 5.80 | |
| 7785.00 | 51.340 | 177.270 | 7186.01 | 520.47 | -532.24 | 2194.61 | 1719234.98 | 14543226.92 | 40°02'41.826"N | 104°43'06.142"W | 1.89 | |
| 7875.00 | 61.960 | 178.630 | 7235.42 | 595.48 | -607.26 | 2197.24 | 1719237.84 | 14543151.94 | 40°02'41.085"N | 104°43'06.108"W | 11.87 | |
| 7964.00 | 63.640 | 178.420 | 7276.10 | 674.60 | -686.39 | 2199.27 | 1719240.12 | 14543072.85 | 40°02'40.303"N | 104°43'06.082"W | 1.90 | |
| 8054.00 | 75.720 | 181.360 | 7307.30 | 758.83 | -770.62 | 2199.35 | 1719240.46 | 14542988.65 | 40°02'39.471"N | 104°43'06.081"W | 13.77 | |
| 8144.00 | 82.180 | 183.540 | 7324.55 | 847.04 | -858.82 | 2195.56 | 1719236.94 | 14542900.47 | 40°02'38.599"N | 104°43'06.130"W | 7.56 | |
| 8233.00 | 88.830 | 182.300 | 7331.52 | 935.63 | -947.38 | 2191.05 | 1719232.70 | 14542811.94 | 40°02'37.724"N | 104°43'06.188"W | 7.60 | LANDING (98'FNL & 656'FEL, SEC.24) 40.0438122 -104.7183855 |
| 8323.00 | 89.820 | 181.830 | 7332.58 | 1025.58 | -1037.31 | 2187.80 | 1719229.73 | 14542722.03 | 40°02'36.835"N | 104°43'06.230"W | 1.22 | |
| 8412.00 | 89.050 | 180.820 | 7333.46 | 1114.56 | -1126.28 | 2185.75 | 1719227.95 | 14542633.09 | 40°02'35.956"N | 104°43'06.256"W | 1.43 | |
| 8502.00 | 88.280 | 179.620 | 7335.55 | 1204.53 | -1216.26 | 2185.40 | 1719227.88 | 14542543.15 | 40°02'35.067"N | 104°43'06.261"W | 1.58 | |
| 8592.00 | 87.630 | 178.410 | 7338.76 | 1294.45 | -1306.18 | 2186.95 | 1719229.70 | 14542453.26 | 40°02'34.178"N | 104°43'06.241"W | 1.53 | |

| REFERENCE WELLPATH IDENTIFICATION | | | |
|-----------------------------------|--------------------------------------|----------|---|
| Operator | KERR-MCGEE OIL & GAS ONSHORE LP (WA) | Slot | SLOT#43 AZUL 13-26HZ (865'FSL & 2447'FWL, SEC.13) |
| Area | COLORADO | Well | AZUL 13-26HZ |
| Field | WELD COUNTY (UTM/TRUE NORTH) | Wellbore | AZUL 13-26HZ AWB |
| Facility | SEC.13-T1N-R66W | | |

| WELLPATH DATA (186 stations) † = interpolated/extrapolated station | | | | | | | | | | | | |
|--|-----------------|-------------|----------|----------------|------------|-----------|-------------------|--------------------|----------------|-----------------|---------------|--|
| MD [ft] | Inclination [°] | Azimuth [°] | TVD [ft] | Vert Sect [ft] | North [ft] | East [ft] | Grid East [US ft] | Grid North [US ft] | Latitude | Longitude | DLS [°/100ft] | Comments |
| 8593.00† | 87.649 | 178.437 | 7338.81 | 1295.44 | -1307.18 | 2186.97 | 1719229.73 | 14542452.26 | 40°02'34.168"N | 104°43'06.241"W | 3.24 | CROSS SETBACK HEEL (442'FNL & 660'FEL, SEC.24) 40.0428245 -104.7184002 |
| 8681.00 | 89.290 | 180.770 | 7341.16 | 1383.40 | -1395.14 | 2187.58 | 1719230.61 | 14542364.34 | 40°02'33.299"N | 104°43'06.233"W | 3.24 | |
| 8771.00 | 90.280 | 180.010 | 7341.49 | 1473.40 | -1485.13 | 2186.97 | 1719230.28 | 14542274.38 | 40°02'32.410"N | 104°43'06.241"W | 1.39 | |
| 8861.00 | 90.890 | 179.080 | 7340.57 | 1563.38 | -1575.13 | 2187.68 | 1719231.27 | 14542184.43 | 40°02'31.520"N | 104°43'06.232"W | 1.24 | |
| 8950.00 | 89.750 | 180.760 | 7340.08 | 1652.37 | -1664.12 | 2187.81 | 1719231.67 | 14542095.47 | 40°02'30.641"N | 104°43'06.230"W | 2.28 | |
| 9040.00 | 88.800 | 181.470 | 7341.22 | 1742.36 | -1754.09 | 2186.06 | 1719230.19 | 14542005.53 | 40°02'29.752"N | 104°43'06.253"W | 1.32 | |
| 9130.00 | 88.400 | 180.970 | 7343.42 | 1832.32 | -1844.05 | 2184.14 | 1719228.55 | 14541915.61 | 40°02'28.863"N | 104°43'06.278"W | 0.71 | |
| 9219.00 | 88.920 | 180.820 | 7345.50 | 1921.29 | -1933.01 | 2182.75 | 1719227.44 | 14541826.67 | 40°02'27.984"N | 104°43'06.296"W | 0.61 | |
| 9309.00 | 90.090 | 180.050 | 7346.27 | 2011.28 | -2023.00 | 2182.07 | 1719227.03 | 14541736.72 | 40°02'27.094"N | 104°43'06.304"W | 1.56 | |
| 9398.00 | 88.890 | 179.630 | 7347.07 | 2100.27 | -2112.00 | 2182.32 | 1719227.55 | 14541647.76 | 40°02'26.215"N | 104°43'06.301"W | 1.43 | |
| 9488.00 | 88.860 | 179.650 | 7348.83 | 2190.25 | -2201.98 | 2182.88 | 1719228.39 | 14541557.81 | 40°02'25.326"N | 104°43'06.294"W | 0.04 | |
| 9578.00 | 88.210 | 179.330 | 7351.13 | 2280.21 | -2291.94 | 2183.68 | 1719229.47 | 14541467.89 | 40°02'24.437"N | 104°43'06.284"W | 0.80 | |
| 9667.00 | 90.120 | 179.920 | 7352.43 | 2369.19 | -2380.93 | 2184.27 | 1719230.33 | 14541378.94 | 40°02'23.557"N | 104°43'06.277"W | 2.25 | |
| 9757.00 | 88.770 | 181.930 | 7353.30 | 2459.17 | -2470.91 | 2182.81 | 1719229.15 | 14541288.99 | 40°02'22.668"N | 104°43'06.295"W | 2.69 | |
| 9846.00 | 88.310 | 181.940 | 7355.57 | 2548.11 | -2559.83 | 2179.81 | 1719226.42 | 14541200.10 | 40°02'21.789"N | 104°43'06.334"W | 0.52 | |
| 9936.00 | 87.470 | 181.250 | 7358.88 | 2638.02 | -2649.73 | 2177.31 | 1719224.20 | 14541110.23 | 40°02'20.901"N | 104°43'06.366"W | 1.21 | |
| 10026.00 | 88.670 | 183.010 | 7361.92 | 2727.92 | -2739.61 | 2173.96 | 1719221.13 | 14541020.37 | 40°02'20.013"N | 104°43'06.410"W | 2.37 | |
| 10115.00 | 88.240 | 182.700 | 7364.32 | 2816.80 | -2828.47 | 2169.53 | 1719216.97 | 14540931.53 | 40°02'19.134"N | 104°43'06.467"W | 0.60 | |
| 10205.00 | 89.970 | 181.390 | 7365.72 | 2906.74 | -2918.39 | 2166.32 | 1719214.04 | 14540841.63 | 40°02'18.246"N | 104°43'06.508"W | 2.41 | |
| 10294.00 | 89.140 | 181.270 | 7366.41 | 2995.73 | -3007.37 | 2164.25 | 1719212.25 | 14540752.69 | 40°02'17.367"N | 104°43'06.535"W | 0.94 | |
| 10384.00 | 90.620 | 181.220 | 7366.60 | 3085.71 | -3097.34 | 2162.30 | 1719210.57 | 14540662.75 | 40°02'16.477"N | 104°43'06.560"W | 1.65 | |
| 10474.00 | 90.710 | 181.010 | 7365.56 | 3175.70 | -3187.32 | 2160.55 | 1719209.10 | 14540572.80 | 40°02'15.588"N | 104°43'06.582"W | 0.25 | |
| 10563.00 | 88.980 | 179.170 | 7365.80 | 3264.69 | -3276.31 | 2160.41 | 1719209.23 | 14540483.84 | 40°02'14.709"N | 104°43'06.584"W | 2.84 | |
| 10653.00 | 88.830 | 179.110 | 7367.52 | 3354.65 | -3366.28 | 2161.76 | 1719210.86 | 14540393.91 | 40°02'13.820"N | 104°43'06.567"W | 0.18 | |
| 10743.00 | 88.340 | 178.590 | 7369.74 | 3444.60 | -3456.24 | 2163.56 | 1719212.94 | 14540304.00 | 40°02'12.931"N | 104°43'06.544"W | 0.79 | |
| 10832.00 | 89.660 | 180.230 | 7371.29 | 3533.57 | -3545.21 | 2164.48 | 1719214.13 | 14540215.06 | 40°02'12.051"N | 104°43'06.532"W | 2.37 | |
| 10922.00 | 88.980 | 179.710 | 7372.36 | 3623.56 | -3635.21 | 2164.53 | 1719214.45 | 14540125.10 | 40°02'11.162"N | 104°43'06.532"W | 0.95 | |
| 11011.00 | 90.000 | 180.500 | 7373.15 | 3712.55 | -3724.20 | 2164.36 | 1719214.56 | 14540036.14 | 40°02'10.283"N | 104°43'06.534"W | 1.45 | |
| 11101.00 | 91.390 | 180.630 | 7372.06 | 3802.54 | -3814.19 | 2163.48 | 1719213.95 | 14539946.19 | 40°02'09.393"N | 104°43'06.546"W | 1.55 | |
| 11191.00 | 91.630 | 179.240 | 7369.69 | 3892.51 | -3904.16 | 2163.58 | 1719214.33 | 14539856.26 | 40°02'08.504"N | 104°43'06.544"W | 1.57 | |
| 11280.00 | 91.820 | 178.160 | 7367.01 | 3981.43 | -3993.09 | 2165.60 | 1719216.62 | 14539767.36 | 40°02'07.625"N | 104°43'06.518"W | 1.23 | |
| 11370.00 | 90.060 | 179.750 | 7365.53 | 4071.39 | -4083.06 | 2167.24 | 1719218.54 | 14539677.44 | 40°02'06.736"N | 104°43'06.497"W | 2.64 | |
| 11459.00 | 90.370 | 179.250 | 7365.20 | 4160.38 | -4172.05 | 2168.01 | 1719219.59 | 14539588.48 | 40°02'05.857"N | 104°43'06.488"W | 0.66 | |
| 11549.00 | 88.650 | 176.540 | 7365.97 | 4250.28 | -4261.98 | 2171.32 | 1719223.17 | 14539498.60 | 40°02'04.968"N | 104°43'06.445"W | 3.57 | |
| 11639.00 | 88.030 | 178.350 | 7368.58 | 4340.13 | -4351.85 | 2175.33 | 1719227.45 | 14539408.78 | 40°02'04.080"N | 104°43'06.394"W | 2.13 | |
| 11650.00† | 88.334 | 178.471 | 7368.93 | 4351.12 | -4362.84 | 2175.63 | 1719227.79 | 14539397.80 | 40°02'03.971"N | 104°43'06.390"W | 2.98 | CROSS SETBACK TOE (1784'FSL & 664'FEL, SEC.24) 40.0344365 -104.7184416 |
| 11728.00 | 90.490 | 179.330 | 7369.73 | 4429.08 | -4440.81 | 2177.13 | 1719229.53 | 14539319.86 | 40°02'03.201"N | 104°43'06.371"W | 2.98 | |
| 11817.00 | 91.140 | 178.660 | 7368.46 | 4518.05 | -4529.79 | 2178.69 | 1719231.36 | 14539230.92 | 40°02'02.322"N | 104°43'06.351"W | 1.05 | |
| 11907.00 | 88.800 | 175.630 | 7368.51 | 4607.90 | -4619.66 | 2183.17 | 1719236.12 | 14539141.10 | 40°02'01.433"N | 104°43'06.293"W | 4.25 | |
| 11997.00 | 89.880 | 178.470 | 7369.54 | 4697.73 | -4709.52 | 2187.80 | 1719241.02 | 14539051.29 | 40°02'00.545"N | 104°43'06.234"W | 3.38 | |
| 12086.00 | 90.490 | 180.230 | 7369.26 | 4786.72 | -4798.51 | 2188.81 | 1719242.30 | 14538962.33 | 40°01'59.666"N | 104°43'06.221"W | 2.09 | |
| 12176.00 | 90.740 | 182.290 | 7368.29 | 4876.69 | -4888.48 | 2186.83 | 1719240.60 | 14538872.40 | 40°01'58.777"N | 104°43'06.246"W | 2.31 | |
| 12265.00 | 91.080 | 182.610 | 7366.88 | 4965.62 | -4977.39 | 2183.03 | 1719237.07 | 14538783.51 | 40°01'57.898"N | 104°43'06.295"W | 0.52 | |
| 12355.00 | 92.490 | 184.110 | 7364.07 | 5055.44 | -5067.19 | 2177.76 | 1719232.08 | 14538693.74 | 40°01'57.011"N | 104°43'06.363"W | 2.29 | |
| 12445.00 | 91.050 | 181.370 | 7361.29 | 5145.31 | -5157.03 | 2173.46 | 1719228.06 | 14538603.92 | 40°01'56.123"N | 104°43'06.419"W | 3.44 | |

| REFERENCE WELLPATH IDENTIFICATION | | | |
|-----------------------------------|--------------------------------------|----------|---|
| Operator | KERR-MCGEE OIL & GAS ONSHORE LP (WA) | Slot | SLOT#43 AZUL 13-26HZ (865'FSL & 2447'FWL, SEC.13) |
| Area | COLORADO | Well | AZUL 13-26HZ |
| Field | WELD COUNTY (UTM/TRUE NORTH) | Wellbore | AZUL 13-26HZ AWB |
| Facility | SEC.13-T1N-R66W | | |

| WELLPATH DATA (186 stations) | | | | | | | | | | | | |
|------------------------------|-----------------|-------------|----------|----------------|------------|-----------|-------------------|--------------------|----------------|-----------------|---------------|---|
| MD [ft] | Inclination [°] | Azimuth [°] | TVD [ft] | Vert Sect [ft] | North [ft] | East [ft] | Grid East [US ft] | Grid North [US ft] | Latitude | Longitude | DLS [°/100ft] | Comments |
| 12534.00 | 91.020 | 180.460 | 7359.69 | 5234.29 | -5246.00 | 2172.04 | 1719226.91 | 14538514.97 | 40°01'55.244"N | 104°43'06.437"W | 1.02 | |
| 12624.00 | 91.630 | 180.160 | 7357.61 | 5324.26 | -5335.98 | 2171.55 | 1719226.70 | 14538425.03 | 40°01'54.355"N | 104°43'06.443"W | 0.76 | |
| 12714.00 | 90.890 | 179.160 | 7355.63 | 5414.24 | -5425.95 | 2172.09 | 1719227.51 | 14538335.10 | 40°01'53.465"N | 104°43'06.437"W | 1.38 | |
| 12803.00 | 90.920 | 178.780 | 7354.22 | 5503.20 | -5514.93 | 2173.69 | 1719229.38 | 14538246.16 | 40°01'52.586"N | 104°43'06.416"W | 0.43 | |
| 12919.00 | 87.100 | 178.090 | 7356.22 | 5619.10 | -5630.84 | 2176.85 | 1719232.91 | 14538130.30 | 40°01'51.441"N | 104°43'06.376"W | 3.35 | LAST BHGE MWD+IFR1+SC SURVEY |
| 12966.00 | 87.100 | 178.090 | 7358.60 | 5666.00 | -5677.76 | 2178.42 | 1719234.61 | 14538083.41 | 40°01'50.977"N | 104°43'06.356"W | 0.00 | PTB (469'FSL & 662'FEL, SEC.24) 40.0308270 -104.7184321 |

| TARGETS | | | | | | | | |
|---|----------|------------|-----------|-------------------|--------------------|----------------|-----------------|---------|
| Name | TVD [ft] | North [ft] | East [ft] | Grid East [US ft] | Grid North [US ft] | Latitude | Longitude | Shape |
| SEC.24-T1N-R66W | -17.00 | 46.99 | -1287.57 | 1715752.42 | 14543795.21 | 40°02'47.551"N | 104°43'50.916"W | polygon |
| AZUL 13-26HZ HEEL REV-1(50'FNL & 657'FEL, SEC.24) | 7339.00 | -898.99 | 2189.51 | 1719231.01 | 14542860.30 | 40°02'38.202"N | 104°43'06.208"W | point |
| AZUL 13-26HZ BHL REV-1(468'FSL & 676'FEL, SEC.24) | 7386.00 | -5679.20 | 2163.88 | 1719220.09 | 14538081.93 | 40°01'50.963"N | 104°43'06.542"W | point |
| AZUL 13-26HZ LANDBOX | 7386.00 | 0.00 | 0.00 | 1717039.62 | 14543752.20 | 40°02'47.087"N | 104°43'34.360"W | polygon |
| AZUL 13-26HZ SETBACK 1 | 7386.00 | 0.00 | 0.00 | 1717039.62 | 14543752.20 | 40°02'47.087"N | 104°43'34.360"W | polygon |
| AZUL 13-26HZ SETBACK 2 | 7386.00 | 0.00 | 0.00 | 1717039.62 | 14543752.20 | 40°02'47.087"N | 104°43'34.360"W | polygon |

| WELLPATH COMPOSITION - Ref Wellbore: AZUL 13-26HZ AWB Ref Wellpath: AZUL 13-26HZ AWP | | | | |
|--|-------------|---|---|------------------|
| Start MD [ft] | End MD [ft] | Positional Uncertainty Model | Log Name/Comment | Wellbore |
| 21.00 | 1851.00 | Custom APC_ISCWSA REV 2 MWD+IFR1 (approximation) | Custom APC_ISCWSA Rev-2 MWD+IFR1 <130 - 1851> | AZUL 13-26HZ AWB |
| 1851.00 | 12919.00 | Custom APC_ISCWSA REV 2 MWD+IFR1+SC (approximation) | BHGE Custom APC_ISCWSA Rev-2 MWD+IFR1+SC <1935 - 12919> | AZUL 13-26HZ AWB |
| 12919.00 | 12966.00 | Blind Drilling (std) | Projection to bit | AZUL 13-26HZ AWB |

| REFERENCE WELLPATH IDENTIFICATION | | | |
|-----------------------------------|--------------------------------------|----------|---|
| Operator | KERR-MCGEE OIL & GAS ONSHORE LP (WA) | Slot | SLOT#43 AZUL 13-26HZ (865'FSL & 2447'FWL, SEC.13) |
| Area | COLORADO | Well | AZUL 13-26HZ |
| Field | WELD COUNTY (UTM/TRUE NORTH) | Wellbore | AZUL 13-26HZ AWB |
| Facility | SEC.13-T1N-R66W | | |

| WELLPATH COMMENTS | | | | |
|-------------------|-----------------|-------------|----------|--|
| MD [ft] | Inclination [°] | Azimuth [°] | TVD [ft] | Comment |
| 130.00 | 0.310 | 261.490 | 130.00 | FIRST SURFACE MWD+IFR1 SURVEY |
| 1851.00 | 24.080 | 98.540 | 1786.18 | LAST SURFACE MWD+IFR1 SURVEY |
| 1935.00 | 23.480 | 98.380 | 1863.05 | FIRST BHGE MWD+IFR1+SC SURVEY |
| 5571.00 | 20.024 | 87.360 | 5143.62 | ENTER LANDBOX (699'FSL & 860'FEL, SEC.13) 40.0459574 -104.7191138 |
| 7005.00 | 2.480 | 211.012 | 6552.78 | KOP |
| 8233.00 | 88.830 | 182.300 | 7331.52 | LANDING (98'FNL & 656'FEL, SEC.24) 40.0438122 -104.7183855 |
| 8593.00 | 87.649 | 178.437 | 7338.81 | CROSS SETBACK HEEL (442'FNL & 660'FEL, SEC.24) 40.0428245 -104.7184002 |
| 11650.00 | 88.334 | 178.471 | 7368.93 | CROSS SETBACK TOE (1784'FSL & 664'FEL, SEC.24) 40.0344365 -104.7184416 |
| 12919.00 | 87.100 | 178.090 | 7356.22 | LAST BHGE MWD+IFR1+SC SURVEY |
| 12966.00 | 87.100 | 178.090 | 7358.60 | PTB (469'FSL & 662'FEL, SEC.24) 40.0308270 -104.7184321 |