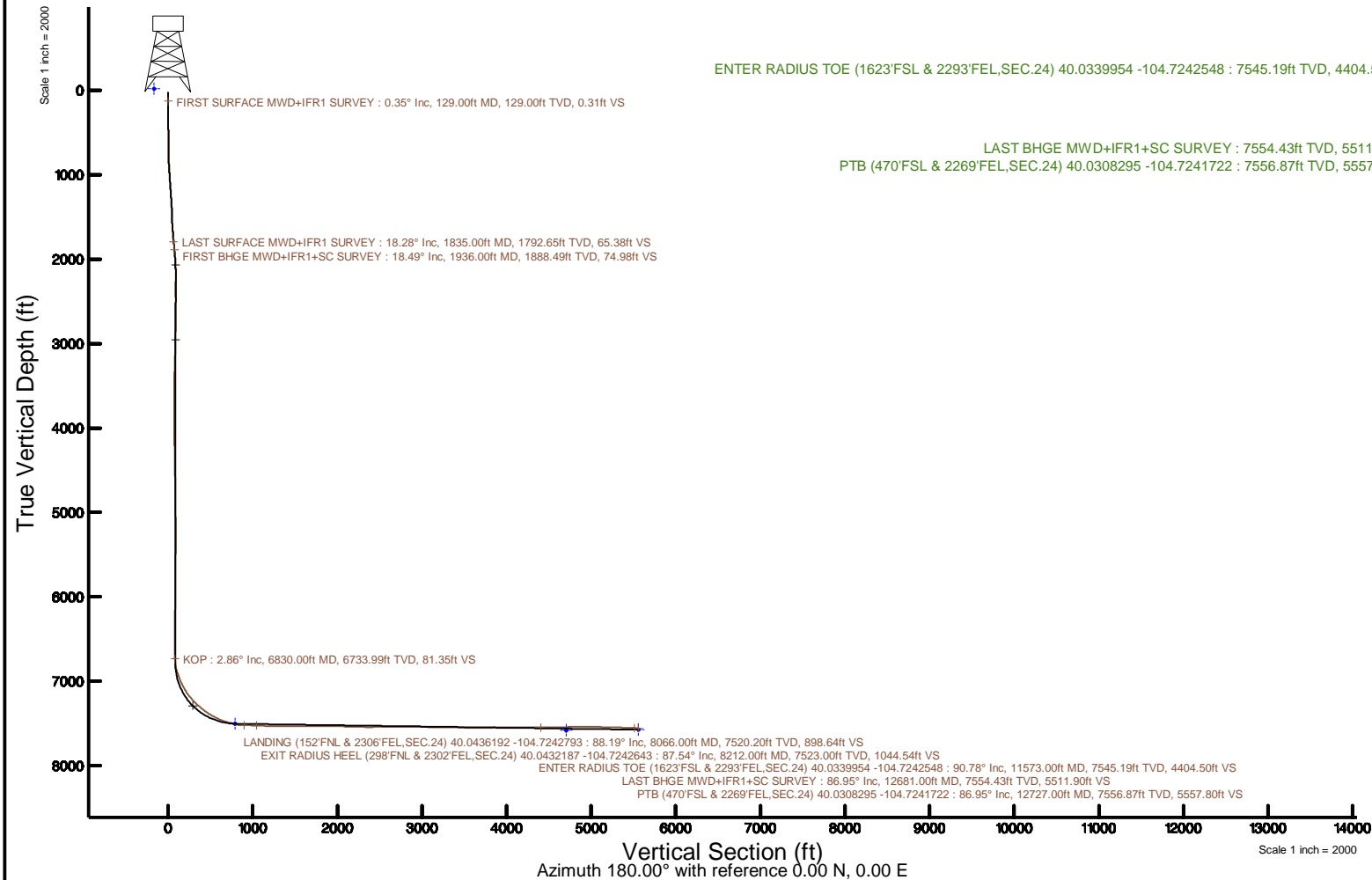


| | | | |
|---|------------------------------|--|---|
| Location: | COLORADO | Slot: | SLOT#37 AZUL 13-20HZ (747FSL & 2326FWL, SEC.13) |
| Field: | WELD COUNTY (UTM/TRUE NORTH) | Well: | AZUL 13-20HZ |
| Facility: | SEC.13-T1N-R66W | Wellbore: | AZUL 13-20HZ PWB |
| Plot reference wellpath is AZUL 13-20HZ PWP Rev-A.0 | | Grid System: NAD83 / UTM Zone 13 North, US feet | |
| True vertical depths are referenced to PD 464 (21") (RT) | | * = Wellpath was transformed from a different geodetic datum | |
| Measured depths are referenced to PD 464 (21") (RT) | | North Reference: True north | |
| PD 464 (21") (RT) to Mean Sea Level: 5071 feet | | Scale: True distance | |
| Mean Sea Level to Mud line (At Slot: SLOTF37 AZUL 13-20HZ (747FSL & 2326FWL SEC.13): 0 feet | | Depths are in feet | |
| Coordinates are in feet referenced to Slot | | Created by: parsnet on 2018-05-25 | |
| | | Database: WA, DEN, Anadarko, Defn | |



Actual Wellpath Report

AZUL 13-20HZ AWP

Page 1 of 7

| REFERENCE WELLPATH IDENTIFICATION | | | |
|-----------------------------------|--------------------------------------|----------|--|
| Operator | KERR-MCGEE OIL & GAS ONSHORE LP (WA) | Slot | SLOT#37 AZUL 13-20HZ (747'FSL & 2326'FWL,SEC.13) |
| Area | COLORADO | Well | AZUL 13-20HZ |
| Field | WELD COUNTY (UTM/TRUE NORTH) | Wellbore | AZUL 13-20HZ AWB |
| Facility | SEC.13-T1N-R66W | | |

| REPORT SETUP INFORMATION | | | |
|--------------------------|------------------------------------|----------------------|---|
| Projection System | NAD83 / UTM Zone 13 North, US feet | Software System | WellArchitect® 5.0 |
| North Reference | True | User | Painsetr |
| Scale | 0.999607 | Report Generated | 5/25/2018 at 9:11 AM |
| Convergence at slot | 0.18° East | Database/Source file | WA_DEN_Anadarko_Defn/AZUL_13-20HZ_AWP.xml |

| WELLPATH LOCATION | | | | | | |
|-----------------------|-------------------|----------|------------------|-----------------|------------------------|-----------------|
| | Local coordinates | | Grid coordinates | | Geographic coordinates | |
| | North[ft] | East[ft] | Easting[US ft] | Northing[US ft] | Latitude | Longitude |
| Slot Location | -4323.31 | -564.93 | 1716918.87 | 14543632.78 | 40°02'45.910"N | 104°43'35.918"W |
| Facility Reference Pt | | | 1717470.20 | 14547956.10 | 40°03'28.634"N | 104°43'28.654"W |
| Field Reference Pt | | | 1698235.31 | 14552047.82 | 40°04'09.600"N | 104°47'36.000"W |

| WELLPATH DATUM | | | |
|--------------------------|-------------------|--|-------------------|
| Calculation method | Minimum curvature | PD 464 (21') (RT) to Facility Vertical Datum | 5071.00ft |
| Horizontal Reference Pt | Slot | PD 464 (21') (RT) to Mean Sea Level | 5071.00ft |
| Vertical Reference Pt | PD 464 (21') (RT) | PD 464 (21') (RT) to Mud Line at Slot (SLOT#37 AZUL 13-20HZ (747'FSL & 2326'FWL,SEC.13)) | 5071.00ft |
| MD Reference Pt | PD 464 (21') (RT) | Section Origin | N 0.00, E 0.00 ft |
| Field Vertical Reference | Mean Sea Level | Section Azimuth | 180.00° |

| REFERENCE WELLPATH IDENTIFICATION | | | |
|-----------------------------------|--------------------------------------|----------|--|
| Operator | KERR-MCGEE OIL & GAS ONSHORE LP (WA) | Slot | SLOT#37 AZUL 13-20HZ (747'FSL & 2326'FWL,SEC.13) |
| Area | COLORADO | Well | AZUL 13-20HZ |
| Field | WELD COUNTY (UTM/TRUE NORTH) | Wellbore | AZUL 13-20HZ AWB |
| Facility | SEC.13-T1N-R66W | | |

| WELLPATH DATA (182 stations) † = interpolated/extrapolated station | | | | | | | | | | | | |
|--|--------------------|----------------|-------------|-------------------|---------------|--------------|----------------------|-----------------------|----------------|-----------------|------------------|-------------------------------|
| MD [ft] | Inclination [°] | Azimuth [°] | TVD [ft] | Vert Sect [ft] | North [ft] | East [ft] | Grid East [US ft] | Grid North [US ft] | Latitude | Longitude | DLS [°/100ft] | Comments |
| 0.00 | 0.00 | 161.210 | 0.00 | 0.00 | 0.00 | 0.00 | 1716918.87 | 14543632.78 | 40°02'45.910"N | 104°43'35.918"W | 0.00 | |
| 21.00 | 0.000 | 161.210 | 21.00 | 0.00 | 0.00 | 0.00 | 1716918.87 | 14543632.78 | 40°02'45.910"N | 104°43'35.918"W | 0.00 | |
| 129.00 | 0.350 | 161.210 | 129.00 | 0.31 | -0.31 | 0.11 | 1716918.97 | 14543632.46 | 40°02'45.907"N | 104°43'35.917"W | 0.32 | FIRST SURFACE MWD+IFR1 SURVEY |
| 161.00 | 0.260 | 157.250 | 161.00 | 0.47 | -0.47 | 0.17 | 1716919.03 | 14543632.30 | 40°02'45.905"N | 104°43'35.916"W | 0.29 | |
| 192.00 | 0.220 | 150.310 | 192.00 | 0.59 | -0.59 | 0.22 | 1716919.09 | 14543632.19 | 40°02'45.904"N | 104°43'35.915"W | 0.16 | |
| 224.00 | 0.400 | 268.960 | 224.00 | 0.64 | -0.64 | 0.14 | 1716919.01 | 14543632.13 | 40°02'45.904"N | 104°43'35.916"W | 1.69 | |
| 255.00 | 0.400 | 161.120 | 255.00 | 0.75 | -0.75 | 0.07 | 1716918.94 | 14543632.03 | 40°02'45.903"N | 104°43'35.917"W | 2.09 | |
| 287.00 | 0.180 | 107.770 | 287.00 | 0.87 | -0.87 | 0.15 | 1716919.02 | 14543631.91 | 40°02'45.901"N | 104°43'35.916"W | 1.02 | |
| 318.00 | 0.310 | 182.210 | 318.00 | 0.97 | -0.97 | 0.20 | 1716919.06 | 14543631.81 | 40°02'45.900"N | 104°43'35.915"W | 1.01 | |
| 350.00 | 0.830 | 121.570 | 350.00 | 1.18 | -1.18 | 0.39 | 1716919.26 | 14543631.60 | 40°02'45.898"N | 104°43'35.913"W | 2.28 | |
| 381.00 | 1.490 | 121.220 | 380.99 | 1.50 | -1.50 | 0.93 | 1716919.79 | 14543631.28 | 40°02'45.895"N | 104°43'35.906"W | 2.13 | |
| 413.00 | 2.110 | 111.200 | 412.97 | 1.93 | -1.93 | 1.83 | 1716920.70 | 14543630.85 | 40°02'45.891"N | 104°43'35.894"W | 2.17 | |
| 445.00 | 2.110 | 122.620 | 444.95 | 2.46 | -2.46 | 2.88 | 1716921.75 | 14543630.32 | 40°02'45.886"N | 104°43'35.881"W | 1.31 | |
| 476.00 | 1.980 | 122.890 | 475.93 | 3.06 | -3.06 | 3.81 | 1716922.68 | 14543629.73 | 40°02'45.880"N | 104°43'35.869"W | 0.42 | |
| 508.00 | 2.150 | 117.080 | 507.91 | 3.63 | -3.63 | 4.80 | 1716923.68 | 14543629.16 | 40°02'45.874"N | 104°43'35.856"W | 0.84 | |
| 539.00 | 2.860 | 98.720 | 538.88 | 4.02 | -4.02 | 6.09 | 1716924.96 | 14543628.78 | 40°02'45.870"N | 104°43'35.840"W | 3.43 | |
| 571.00 | 3.160 | 96.430 | 570.84 | 4.23 | -4.24 | 7.75 | 1716926.63 | 14543628.57 | 40°02'45.868"N | 104°43'35.818"W | 1.01 | |
| 603.00 | 4.570 | 95.550 | 602.76 | 4.46 | -4.46 | 9.90 | 1716928.77 | 14543628.35 | 40°02'45.866"N | 104°43'35.791"W | 4.41 | |
| 635.00 | 4.970 | 91.860 | 634.65 | 4.63 | -4.63 | 12.55 | 1716931.43 | 14543628.19 | 40°02'45.864"N | 104°43'35.757"W | 1.57 | |
| 667.00 | 5.360 | 94.140 | 666.52 | 4.78 | -4.78 | 15.43 | 1716934.30 | 14543628.05 | 40°02'45.863"N | 104°43'35.720"W | 1.38 | |
| 699.00 | 5.710 | 97.130 | 698.37 | 5.08 | -5.08 | 18.50 | 1716937.37 | 14543627.75 | 40°02'45.860"N | 104°43'35.680"W | 1.42 | |
| 730.00 | 6.680 | 97.750 | 729.19 | 5.52 | -5.52 | 21.82 | 1716940.69 | 14543627.33 | 40°02'45.855"N | 104°43'35.637"W | 3.14 | |
| 762.00 | 7.250 | 98.100 | 760.96 | 6.05 | -6.05 | 25.66 | 1716944.53 | 14543626.80 | 40°02'45.850"N | 104°43'35.588"W | 1.79 | |
| 794.00 | 8.040 | 103.290 | 792.67 | 6.85 | -6.85 | 29.84 | 1716948.71 | 14543626.02 | 40°02'45.842"N | 104°43'35.534"W | 3.28 | |
| 826.00 | 9.320 | 103.200 | 824.31 | 7.96 | -7.96 | 34.54 | 1716953.41 | 14543624.93 | 40°02'45.831"N | 104°43'35.474"W | 4.00 | |
| 857.00 | 10.370 | 106.800 | 854.85 | 9.34 | -9.34 | 39.65 | 1716958.53 | 14543623.56 | 40°02'45.818"N | 104°43'35.408"W | 3.92 | |
| 889.00 | 10.900 | 105.220 | 886.30 | 10.96 | -10.97 | 45.33 | 1716964.21 | 14543621.95 | 40°02'45.802"N | 104°43'35.335"W | 1.89 | |
| 921.00 | 11.470 | 106.360 | 917.69 | 12.65 | -12.66 | 51.30 | 1716970.18 | 14543620.28 | 40°02'45.785"N | 104°43'35.258"W | 1.91 | |
| 953.00 | 11.650 | 106.800 | 949.04 | 14.48 | -14.49 | 57.45 | 1716976.33 | 14543618.47 | 40°02'45.767"N | 104°43'35.179"W | 0.63 | |
| 984.00 | 12.440 | 104.960 | 979.36 | 16.25 | -16.25 | 63.67 | 1716982.56 | 14543616.72 | 40°02'45.749"N | 104°43'35.099"W | 2.83 | |
| 1016.00 | 13.580 | 104.870 | 1010.54 | 18.11 | -18.11 | 70.63 | 1716989.52 | 14543614.89 | 40°02'45.731"N | 104°43'35.010"W | 3.56 | |
| 1048.00 | 14.410 | 105.570 | 1041.59 | 20.14 | -20.14 | 78.10 | 1716996.99 | 14543612.88 | 40°02'45.711"N | 104°43'34.914"W | 2.65 | |
| 1080.00 | 15.470 | 105.390 | 1072.50 | 22.34 | -22.34 | 86.05 | 1717004.95 | 14543610.71 | 40°02'45.689"N | 104°43'34.812"W | 3.32 | |
| 1111.00 | 15.820 | 104.340 | 1102.36 | 24.48 | -24.48 | 94.13 | 1717013.03 | 14543608.59 | 40°02'45.668"N | 104°43'34.708"W | 1.45 | |
| 1143.00 | 16.170 | 104.080 | 1133.12 | 26.65 | -26.65 | 102.68 | 1717021.58 | 14543606.45 | 40°02'45.647"N | 104°43'34.598"W | 1.12 | |
| 1175.00 | 16.660 | 102.670 | 1163.81 | 28.74 | -28.74 | 111.47 | 1717030.38 | 14543604.39 | 40°02'45.626"N | 104°43'34.485"W | 1.97 | |
| 1206.00 | 17.090 | 102.760 | 1193.48 | 30.72 | -30.72 | 120.25 | 1717039.16 | 14543602.44 | 40°02'45.606"N | 104°43'34.372"W | 1.39 | |
| 1238.00 | 17.310 | 102.760 | 1224.05 | 32.81 | -32.81 | 129.48 | 1717048.39 | 14543600.38 | 40°02'45.586"N | 104°43'34.253"W | 0.69 | |
| 1270.00 | 17.710 | 102.230 | 1254.56 | 34.89 | -34.89 | 138.88 | 1717057.80 | 14543598.32 | 40°02'45.565"N | 104°43'34.132"W | 1.35 | |
| 1302.00 | 17.890 | 101.260 | 1285.03 | 36.88 | -36.88 | 148.46 | 1717067.38 | 14543596.36 | 40°02'45.546"N | 104°43'34.009"W | 1.08 | |
| 1334.00 | 17.910 | 100.910 | 1315.48 | 38.77 | -38.77 | 158.11 | 1717077.03 | 14543594.50 | 40°02'45.527"N | 104°43'33.885"W | 0.34 | |
| 1365.00 | 18.410 | 99.510 | 1344.94 | 40.48 | -40.48 | 167.62 | 1717086.54 | 14543592.82 | 40°02'45.510"N | 104°43'33.763"W | 2.14 | |
| 1397.00 | 18.500 | 98.980 | 1375.29 | 42.11 | -42.11 | 177.62 | 1717096.54 | 14543591.22 | 40°02'45.494"N | 104°43'33.634"W | 0.59 | |
| 1429.00 | 17.970 | 95.380 | 1405.69 | 43.36 | -43.37 | 187.54 | 1717106.47 | 14543590.00 | 40°02'45.481"N | 104°43'33.506"W | 3.89 | |
| 1460.00 | 17.750 | 93.350 | 1435.19 | 44.09 | -44.09 | 197.02 | 1717115.94 | 14543589.31 | 40°02'45.474"N | 104°43'33.385"W | 2.13 | |

| REFERENCE WELLPATH IDENTIFICATION | | | |
|-----------------------------------|--------------------------------------|----------|--|
| Operator | KERR-MCGEE OIL & GAS ONSHORE LP (WA) | Slot | SLOT#37 AZUL 13-20HZ (747'FSL & 2326'FWL,SEC.13) |
| Area | COLORADO | Well | AZUL 13-20HZ |
| Field | WELD COUNTY (UTM/TRUE NORTH) | Wellbore | AZUL 13-20HZ AWB |
| Facility | SEC.13-T1N-R66W | | |

| WELLPATH DATA (182 stations) | | | | | | | | | | | | |
|------------------------------|-----------------|-------------|----------|----------------|------------|-----------|-------------------|--------------------|----------------|-----------------|---------------|-------------------------------|
| MD [ft] | Inclination [°] | Azimuth [°] | TVD [ft] | Vert Sect [ft] | North [ft] | East [ft] | Grid East [US ft] | Grid North [US ft] | Latitude | Longitude | DLS [°/100ft] | Comments |
| 1492.00 | 17.620 | 96.780 | 1465.68 | 44.95 | -44.95 | 206.70 | 1717125.62 | 14543588.48 | 40°02'45.466"N | 104°43'33.260"W | 3.28 | |
| 1523.00 | 17.400 | 98.100 | 1495.25 | 46.15 | -46.16 | 215.95 | 1717134.87 | 14543587.30 | 40°02'45.454"N | 104°43'33.141"W | 1.46 | |
| 1555.00 | 17.580 | 97.480 | 1525.77 | 47.46 | -47.46 | 225.48 | 1717144.40 | 14543586.03 | 40°02'45.441"N | 104°43'33.019"W | 0.81 | |
| 1587.00 | 17.490 | 98.360 | 1556.28 | 48.78 | -48.79 | 235.03 | 1717153.95 | 14543584.73 | 40°02'45.428"N | 104°43'32.896"W | 0.87 | |
| 1619.00 | 17.140 | 101.530 | 1586.83 | 50.42 | -50.43 | 244.41 | 1717163.33 | 14543583.12 | 40°02'45.412"N | 104°43'32.775"W | 3.14 | |
| 1650.00 | 17.090 | 102.930 | 1616.46 | 52.36 | -52.36 | 253.32 | 1717172.25 | 14543581.21 | 40°02'45.393"N | 104°43'32.661"W | 1.34 | |
| 1682.00 | 17.140 | 102.490 | 1647.04 | 54.43 | -54.43 | 262.51 | 1717181.43 | 14543579.17 | 40°02'45.372"N | 104°43'32.543"W | 0.43 | |
| 1714.00 | 17.580 | 102.410 | 1677.58 | 56.49 | -56.49 | 271.83 | 1717190.76 | 14543577.14 | 40°02'45.352"N | 104°43'32.423"W | 1.38 | |
| 1777.00 | 18.190 | 102.670 | 1737.54 | 60.69 | -60.69 | 290.72 | 1717209.65 | 14543573.00 | 40°02'45.310"N | 104°43'32.180"W | 0.98 | |
| 1809.00 | 18.110 | 105.310 | 1767.95 | 63.10 | -63.10 | 300.39 | 1717219.33 | 14543570.62 | 40°02'45.286"N | 104°43'32.056"W | 2.58 | |
| 1835.00 | 18.280 | 107.330 | 1792.65 | 65.38 | -65.38 | 308.18 | 1717227.12 | 14543568.36 | 40°02'45.264"N | 104°43'31.955"W | 2.51 | LAST SURFACE MWD+IFR1 SURVEY |
| 1936.00 | 18.490 | 107.770 | 1888.49 | 74.98 | -74.99 | 338.55 | 1717257.51 | 14543558.85 | 40°02'45.169"N | 104°43'31.565"W | 0.25 | FIRST BHGE MWD+IFR1+SC SURVEY |
| 2026.00 | 17.040 | 103.440 | 1974.20 | 82.40 | -82.41 | 364.97 | 1717283.94 | 14543551.52 | 40°02'45.096"N | 104°43'31.225"W | 2.18 | |
| 2116.00 | 17.930 | 98.480 | 2060.05 | 87.51 | -87.52 | 391.50 | 1717310.48 | 14543546.49 | 40°02'45.045"N | 104°43'30.884"W | 1.93 | |
| 2205.00 | 17.420 | 92.810 | 2144.85 | 90.19 | -90.19 | 418.36 | 1717337.33 | 14543543.90 | 40°02'45.019"N | 104°43'30.539"W | 2.02 | |
| 2295.00 | 18.080 | 87.150 | 2230.57 | 90.15 | -90.16 | 445.76 | 1717364.73 | 14543544.02 | 40°02'45.019"N | 104°43'30.186"W | 2.05 | |
| 2385.00 | 18.400 | 87.130 | 2316.05 | 88.74 | -88.75 | 473.90 | 1717392.84 | 14543545.51 | 40°02'45.033"N | 104°43'29.825"W | 0.36 | |
| 2474.00 | 17.970 | 92.290 | 2400.61 | 88.59 | -88.60 | 501.65 | 1717420.58 | 14543545.75 | 40°02'45.034"N | 104°43'29.468"W | 1.87 | |
| 2564.00 | 18.070 | 92.960 | 2486.20 | 89.86 | -89.87 | 529.46 | 1717448.39 | 14543544.56 | 40°02'45.022"N | 104°43'29.110"W | 0.26 | |
| 2654.00 | 16.560 | 90.960 | 2572.12 | 90.80 | -90.81 | 556.22 | 1717475.14 | 14543543.71 | 40°02'45.013"N | 104°43'28.766"W | 1.80 | |
| 2743.00 | 15.620 | 90.040 | 2657.63 | 91.02 | -91.03 | 580.89 | 1717499.80 | 14543543.56 | 40°02'45.010"N | 104°43'28.449"W | 1.09 | |
| 2833.00 | 14.380 | 88.590 | 2744.56 | 90.75 | -90.76 | 604.18 | 1717523.08 | 14543543.90 | 40°02'45.013"N | 104°43'28.149"W | 1.44 | |
| 2923.00 | 12.440 | 86.030 | 2832.10 | 89.81 | -89.82 | 625.02 | 1717543.91 | 14543544.91 | 40°02'45.022"N | 104°43'27.881"W | 2.25 | |
| 3012.00 | 10.560 | 84.360 | 2919.31 | 88.34 | -88.35 | 642.70 | 1717561.58 | 14543546.43 | 40°02'45.037"N | 104°43'27.654"W | 2.15 | |
| 3102.00 | 8.990 | 83.190 | 3008.00 | 86.70 | -86.71 | 657.89 | 1717576.76 | 14543548.12 | 40°02'45.053"N | 104°43'27.459"W | 1.76 | |
| 3192.00 | 6.550 | 71.470 | 3097.18 | 84.23 | -84.24 | 669.74 | 1717588.60 | 14543550.62 | 40°02'45.077"N | 104°43'27.306"W | 3.22 | |
| 3282.00 | 4.730 | 59.820 | 3186.74 | 80.73 | -80.75 | 677.82 | 1717596.66 | 14543554.14 | 40°02'45.112"N | 104°43'27.202"W | 2.38 | |
| 3371.00 | 3.160 | 61.630 | 3275.53 | 77.72 | -77.73 | 683.15 | 1717601.98 | 14543557.17 | 40°02'45.142"N | 104°43'27.134"W | 1.77 | |
| 3461.00 | 1.850 | 53.710 | 3365.44 | 75.68 | -75.70 | 686.50 | 1717605.33 | 14543559.22 | 40°02'45.162"N | 104°43'27.091"W | 1.50 | |
| 3550.00 | 1.520 | 53.190 | 3454.40 | 74.13 | -74.14 | 688.61 | 1717607.42 | 14543560.78 | 40°02'45.177"N | 104°43'27.064"W | 0.37 | |
| 3640.00 | 1.270 | 40.990 | 3544.37 | 72.66 | -72.67 | 690.22 | 1717609.03 | 14543562.25 | 40°02'45.192"N | 104°43'27.043"W | 0.43 | |
| 3729.00 | 1.140 | 17.110 | 3633.35 | 71.07 | -71.08 | 691.13 | 1717609.93 | 14543563.84 | 40°02'45.207"N | 104°43'27.031"W | 0.58 | |
| 3819.00 | 1.300 | 250.140 | 3723.35 | 70.56 | -70.57 | 690.43 | 1717609.23 | 14543564.35 | 40°02'45.213"N | 104°43'27.040"W | 2.43 | |
| 3909.00 | 1.210 | 257.370 | 3813.32 | 71.11 | -71.13 | 688.54 | 1717607.35 | 14543563.79 | 40°02'45.207"N | 104°43'27.065"W | 0.20 | |
| 3998.00 | 1.090 | 233.100 | 3902.31 | 71.83 | -71.84 | 686.95 | 1717605.76 | 14543563.07 | 40°02'45.200"N | 104°43'27.085"W | 0.56 | |
| 4088.00 | 1.030 | 208.190 | 3992.29 | 73.05 | -73.07 | 685.88 | 1717604.70 | 14543561.84 | 40°02'45.188"N | 104°43'27.099"W | 0.51 | |
| 4178.00 | 0.830 | 214.880 | 4082.28 | 74.30 | -74.31 | 685.13 | 1717603.94 | 14543560.59 | 40°02'45.176"N | 104°43'27.108"W | 0.25 | |
| 4267.00 | 1.050 | 209.100 | 4171.27 | 75.54 | -75.56 | 684.36 | 1717603.18 | 14543559.35 | 40°02'45.163"N | 104°43'27.118"W | 0.27 | |
| 4357.00 | 0.820 | 184.720 | 4261.26 | 76.91 | -76.92 | 683.91 | 1717602.73 | 14543557.99 | 40°02'45.150"N | 104°43'27.124"W | 0.50 | |
| 4447.00 | 0.920 | 197.860 | 4351.25 | 78.24 | -78.25 | 683.63 | 1717602.46 | 14543556.66 | 40°02'45.137"N | 104°43'27.128"W | 0.25 | |
| 4537.00 | 1.030 | 203.040 | 4441.23 | 79.67 | -79.68 | 683.09 | 1717601.93 | 14543555.22 | 40°02'45.122"N | 104°43'27.135"W | 0.16 | |
| 4626.00 | 1.600 | 187.120 | 4530.21 | 81.64 | -81.65 | 682.63 | 1717601.47 | 14543553.25 | 40°02'45.103"N | 104°43'27.141"W | 0.75 | |
| 4716.00 | 1.790 | 177.140 | 4620.17 | 84.29 | -84.30 | 682.54 | 1717601.39 | 14543550.60 | 40°02'45.077"N | 104°43'27.142"W | 0.39 | |
| 4806.00 | 0.760 | 156.150 | 4710.15 | 86.24 | -86.25 | 682.85 | 1717601.71 | 14543548.66 | 40°02'45.058"N | 104°43'27.138"W | 1.24 | |
| 4895.00 | 0.710 | 181.570 | 4799.14 | 87.33 | -87.34 | 683.08 | 1717601.94 | 14543547.57 | 40°02'45.047"N | 104°43'27.135"W | 0.37 | |

| REFERENCE WELLPATH IDENTIFICATION | | | |
|-----------------------------------|--------------------------------------|----------|--|
| Operator | KERR-MCGEE OIL & GAS ONSHORE LP (WA) | Slot | SLOT#37 AZUL 13-20HZ (747'FSL & 2326'FWL,SEC.13) |
| Area | COLORADO | Well | AZUL 13-20HZ |
| Field | WELD COUNTY (UTM/TRUE NORTH) | Wellbore | AZUL 13-20HZ AWB |
| Facility | SEC.13-T1N-R66W | | |

| WELLPATH DATA (182 stations) † = interpolated/extrapolated station | | | | | | | | | | | | |
|--|--------------------|----------------|-------------|-------------------|---------------|--------------|----------------------|-----------------------|----------------|-----------------|------------------|--|
| MD [ft] | Inclination [°] | Azimuth [°] | TVD [ft] | Vert Sect [ft] | North [ft] | East [ft] | Grid East [US ft] | Grid North [US ft] | Latitude | Longitude | DLS [°/100ft] | Comments |
| 4985.00 | 0.450 | 140.840 | 4889.14 | 88.16 | -88.17 | 683.28 | 1717602.15 | 14543546.74 | 40°02'45.039"N | 104°43'27.132"W | 0.52 | |
| 5075.00 | 0.460 | 150.470 | 4979.13 | 88.75 | -88.76 | 683.68 | 1717602.55 | 14543546.15 | 40°02'45.033"N | 104°43'27.127"W | 0.09 | |
| 5164.00 | 0.640 | 166.650 | 5068.13 | 89.54 | -89.55 | 683.98 | 1717602.84 | 14543545.36 | 40°02'45.025"N | 104°43'27.123"W | 0.27 | |
| 5254.00 | 1.180 | 193.350 | 5158.12 | 90.93 | -90.95 | 683.88 | 1717602.75 | 14543543.96 | 40°02'45.011"N | 104°43'27.125"W | 0.75 | |
| 5344.00 | 0.530 | 36.240 | 5248.11 | 91.50 | -91.51 | 683.91 | 1717602.78 | 14543543.40 | 40°02'45.006"N | 104°43'27.124"W | 1.87 | |
| 5433.00 | 0.610 | 16.140 | 5337.11 | 90.71 | -90.72 | 684.28 | 1717603.15 | 14543544.19 | 40°02'45.013"N | 104°43'27.119"W | 0.24 | |
| 5523.00 | 0.430 | 340.180 | 5427.10 | 89.93 | -89.95 | 684.30 | 1717603.17 | 14543544.96 | 40°02'45.021"N | 104°43'27.119"W | 0.40 | |
| 5613.00 | 0.780 | 311.810 | 5517.10 | 89.21 | -89.22 | 683.73 | 1717602.60 | 14543545.69 | 40°02'45.028"N | 104°43'27.126"W | 0.50 | |
| 5702.00 | 0.650 | 319.360 | 5606.09 | 88.42 | -88.43 | 682.95 | 1717601.82 | 14543546.47 | 40°02'45.036"N | 104°43'27.136"W | 0.18 | |
| 5792.00 | 0.500 | 312.620 | 5696.09 | 87.77 | -87.78 | 682.33 | 1717601.19 | 14543547.12 | 40°02'45.042"N | 104°43'27.144"W | 0.18 | |
| 5882.00 | 0.650 | 330.260 | 5786.08 | 87.06 | -87.07 | 681.79 | 1717600.65 | 14543547.83 | 40°02'45.049"N | 104°43'27.151"W | 0.26 | |
| 5972.00 | 0.560 | 324.070 | 5876.08 | 86.26 | -86.27 | 681.28 | 1717600.13 | 14543548.63 | 40°02'45.057"N | 104°43'27.158"W | 0.12 | |
| 6061.00 | 0.630 | 357.550 | 5965.07 | 85.42 | -85.43 | 681.00 | 1717599.86 | 14543549.47 | 40°02'45.066"N | 104°43'27.162"W | 0.39 | |
| 6151.00 | 0.800 | 1.130 | 6055.07 | 84.30 | -84.31 | 680.99 | 1717599.84 | 14543550.59 | 40°02'45.077"N | 104°43'27.162"W | 0.20 | |
| 6241.00 | 0.870 | 27.770 | 6145.06 | 83.06 | -83.07 | 681.32 | 1717600.17 | 14543551.82 | 40°02'45.089"N | 104°43'27.157"W | 0.43 | |
| 6331.00 | 0.680 | 348.620 | 6235.05 | 81.93 | -81.95 | 681.54 | 1717600.38 | 14543552.95 | 40°02'45.100"N | 104°43'27.155"W | 0.61 | |
| 6420.00 | 0.740 | 325.360 | 6324.04 | 80.94 | -80.96 | 681.10 | 1717599.95 | 14543553.94 | 40°02'45.110"N | 104°43'27.160"W | 0.33 | |
| 6510.00 | 0.740 | 312.060 | 6414.04 | 80.08 | -80.09 | 680.34 | 1717599.18 | 14543554.81 | 40°02'45.118"N | 104°43'27.170"W | 0.19 | |
| 6599.00 | 1.130 | 331.520 | 6503.02 | 78.92 | -78.93 | 679.50 | 1717598.33 | 14543555.96 | 40°02'45.130"N | 104°43'27.181"W | 0.56 | |
| 6688.00 | 0.930 | 199.010 | 6592.02 | 78.83 | -78.84 | 678.84 | 1717597.68 | 14543556.05 | 40°02'45.131"N | 104°43'27.189"W | 2.12 | |
| 6778.00 | 0.440 | 183.990 | 6682.01 | 79.87 | -79.88 | 678.58 | 1717597.42 | 14543555.01 | 40°02'45.121"N | 104°43'27.193"W | 0.58 | |
| 6830.00† | 2.864 | 188.165 | 6733.99 | 81.35 | -81.36 | 678.38 | 1717597.23 | 14543553.52 | 40°02'45.106"N | 104°43'27.195"W | 4.66 | KOP |
| 6867.00 | 4.590 | 188.450 | 6770.91 | 83.73 | -83.74 | 678.03 | 1717596.89 | 14543551.15 | 40°02'45.082"N | 104°43'27.200"W | 4.66 | |
| 6957.00 | 15.670 | 188.270 | 6859.36 | 99.37 | -99.38 | 675.75 | 1717594.65 | 14543535.51 | 40°02'44.928"N | 104°43'27.229"W | 12.31 | |
| 7047.00 | 20.180 | 185.730 | 6944.98 | 126.86 | -126.87 | 672.45 | 1717591.44 | 14543508.02 | 40°02'44.656"N | 104°43'27.271"W | 5.08 | |
| 7136.00 | 24.800 | 188.120 | 7027.19 | 160.63 | -160.64 | 668.28 | 1717587.37 | 14543474.25 | 40°02'44.322"N | 104°43'27.325"W | 5.29 | |
| 7226.00 | 31.670 | 184.490 | 7106.44 | 202.93 | -202.94 | 663.76 | 1717582.98 | 14543431.96 | 40°02'43.904"N | 104°43'27.383"W | 7.86 | |
| 7315.00 | 38.150 | 182.680 | 7179.38 | 253.73 | -253.74 | 660.64 | 1717580.02 | 14543381.16 | 40°02'43.402"N | 104°43'27.423"W | 7.37 | |
| 7405.00 | 45.400 | 180.000 | 7246.46 | 313.62 | -313.64 | 659.34 | 1717578.90 | 14543321.29 | 40°02'42.810"N | 104°43'27.440"W | 8.29 | |
| 7495.00 | 49.860 | 177.900 | 7307.10 | 380.08 | -380.09 | 660.60 | 1717580.37 | 14543254.86 | 40°02'42.154"N | 104°43'27.424"W | 5.25 | |
| 7584.00 | 54.070 | 178.510 | 7361.93 | 450.13 | -450.14 | 662.78 | 1717582.77 | 14543184.85 | 40°02'41.461"N | 104°43'27.396"W | 4.76 | |
| 7674.00 | 61.470 | 182.570 | 7409.91 | 526.18 | -526.19 | 661.96 | 1717582.17 | 14543108.82 | 40°02'40.710"N | 104°43'27.407"W | 9.06 | |
| 7764.00 | 66.820 | 182.530 | 7449.14 | 607.06 | -607.07 | 658.36 | 1717578.82 | 14543027.96 | 40°02'39.911"N | 104°43'27.453"W | 5.94 | |
| 7853.00 | 72.860 | 179.020 | 7479.81 | 690.55 | -690.56 | 657.28 | 1717578.00 | 14542944.51 | 40°02'39.086"N | 104°43'27.467"W | 7.73 | |
| 7943.00 | 74.850 | 178.660 | 7504.84 | 776.98 | -776.99 | 659.03 | 1717580.01 | 14542858.12 | 40°02'38.232"N | 104°43'27.444"W | 2.24 | |
| 8032.00 | 87.070 | 178.540 | 7518.79 | 864.68 | -864.69 | 661.17 | 1717582.43 | 14542770.46 | 40°02'37.365"N | 104°43'27.417"W | 13.73 | |
| 8066.00† | 88.188 | 178.480 | 7520.20 | 898.64 | -898.65 | 662.06 | 1717583.41 | 14542736.52 | 40°02'37.029"N | 104°43'27.405"W | 3.29 | LANDING (152'FNL & 2306'FEL,SEC.24) 40.0436192 -104.7242793 |
| 8122.00 | 90.030 | 178.380 | 7521.07 | 954.61 | -954.62 | 663.59 | 1717585.12 | 14542680.58 | 40°02'36.476"N | 104°43'27.386"W | 3.29 | |
| 8211.00 | 87.540 | 178.230 | 7522.96 | 1043.54 | -1043.55 | 666.22 | 1717588.02 | 14542591.69 | 40°02'35.597"N | 104°43'27.352"W | 2.80 | |
| 8212.00† | 87.536 | 178.221 | 7523.00 | 1044.54 | -1044.55 | 666.25 | 1717588.06 | 14542590.69 | 40°02'35.587"N | 104°43'27.351"W | 1.03 | EXIT RADIUS HEEL (298'FNL & 2302'FEL,SEC.24) 40.0432187 -104.7242643 |
| 8301.00 | 87.170 | 177.380 | 7527.11 | 1133.38 | -1133.39 | 669.67 | 1717591.74 | 14542501.89 | 40°02'34.709"N | 104°43'27.308"W | 1.03 | |
| 8391.00 | 87.590 | 179.460 | 7531.22 | 1223.24 | -1223.26 | 672.14 | 1717594.49 | 14542412.07 | 40°02'33.821"N | 104°43'27.276"W | 2.36 | |
| 8480.00 | 90.310 | 179.070 | 7532.86 | 1312.21 | -1312.22 | 673.29 | 1717595.91 | 14542323.14 | 40°02'32.942"N | 104°43'27.261"W | 3.09 | |
| 8570.00 | 90.490 | 179.470 | 7532.23 | 1402.20 | -1402.22 | 674.43 | 1717597.33 | 14542233.19 | 40°02'32.053"N | 104°43'27.246"W | 0.49 | |
| 8660.00 | 89.940 | 179.000 | 7531.89 | 1492.19 | -1492.21 | 675.63 | 1717598.81 | 14542143.24 | 40°02'31.164"N | 104°43'27.231"W | 0.80 | |

| REFERENCE WELLPATH IDENTIFICATION | | | |
|-----------------------------------|--------------------------------------|----------|--|
| Operator | KERR-MCGEE OIL & GAS ONSHORE LP (WA) | Slot | SLOT#37 AZUL 13-20HZ (747'FSL & 2326'FWL,SEC.13) |
| Area | COLORADO | Well | AZUL 13-20HZ |
| Field | WELD COUNTY (UTM/TRUE NORTH) | Wellbore | AZUL 13-20HZ AWB |
| Facility | SEC.13-T1N-R66W | | |

| WELLPATH DATA (182 stations) † = interpolated/extrapolated station | | | | | | | | | | | | |
|--|--------------------|----------------|-------------|-------------------|---------------|--------------|----------------------|-----------------------|----------------|-----------------|------------------|--|
| MD [ft] | Inclination [°] | Azimuth [°] | TVD [ft] | Vert Sect [ft] | North [ft] | East [ft] | Grid East [US ft] | Grid North [US ft] | Latitude | Longitude | DLS [°/100ft] | Comments |
| 8750.00 | 89.850 | 178.700 | 7532.05 | 1582.18 | -1582.19 | 677.44 | 1717600.89 | 14542053.30 | 40°02'30.274"N | 104°43'27.208"W | 0.35 | |
| 8839.00 | 89.910 | 178.100 | 7532.24 | 1671.14 | -1671.15 | 679.92 | 1717603.65 | 14541964.38 | 40°02'29.395"N | 104°43'27.176"W | 0.68 | |
| 8929.00 | 89.780 | 181.550 | 7532.48 | 1761.13 | -1761.14 | 680.20 | 1717604.20 | 14541874.43 | 40°02'28.506"N | 104°43'27.172"W | 3.84 | |
| 9018.00 | 90.090 | 181.120 | 7532.59 | 1850.10 | -1850.11 | 678.13 | 1717602.40 | 14541785.48 | 40°02'27.627"N | 104°43'27.199"W | 0.60 | |
| 9108.00 | 90.030 | 181.160 | 7532.49 | 1940.08 | -1940.10 | 676.34 | 1717600.88 | 14541695.53 | 40°02'26.737"N | 104°43'27.223"W | 0.08 | |
| 9198.00 | 88.640 | 179.900 | 7533.54 | 2030.07 | -2030.08 | 675.50 | 1717600.33 | 14541605.58 | 40°02'25.848"N | 104°43'27.233"W | 2.08 | |
| 9287.00 | 88.680 | 179.810 | 7535.62 | 2119.05 | -2119.06 | 675.73 | 1717600.83 | 14541516.64 | 40°02'24.969"N | 104°43'27.230"W | 0.11 | |
| 9377.00 | 88.520 | 179.900 | 7537.82 | 2209.02 | -2209.03 | 675.96 | 1717601.33 | 14541426.70 | 40°02'24.080"N | 104°43'27.227"W | 0.20 | |
| 9467.00 | 88.120 | 179.260 | 7540.45 | 2298.98 | -2298.99 | 676.62 | 1717602.26 | 14541336.78 | 40°02'23.191"N | 104°43'27.219"W | 0.84 | |
| 9556.00 | 90.590 | 178.850 | 7541.46 | 2387.95 | -2387.96 | 678.08 | 1717604.00 | 14541247.85 | 40°02'22.311"N | 104°43'27.200"W | 2.81 | |
| 9646.00 | 89.970 | 178.670 | 7541.02 | 2477.93 | -2477.94 | 680.03 | 1717606.23 | 14541157.91 | 40°02'21.422"N | 104°43'27.175"W | 0.72 | |
| 9735.00 | 91.350 | 179.690 | 7539.99 | 2566.91 | -2566.92 | 681.30 | 1717607.77 | 14541068.97 | 40°02'20.543"N | 104°43'27.158"W | 1.93 | |
| 9825.00 | 91.230 | 179.390 | 7537.97 | 2656.88 | -2656.90 | 682.03 | 1717608.77 | 14540979.03 | 40°02'19.654"N | 104°43'27.149"W | 0.36 | |
| 9915.00 | 89.820 | 181.120 | 7537.14 | 2746.87 | -2746.89 | 681.63 | 1717608.65 | 14540889.08 | 40°02'18.764"N | 104°43'27.154"W | 2.48 | |
| 10004.00 | 89.630 | 181.540 | 7537.57 | 2835.85 | -2835.86 | 679.56 | 1717606.86 | 14540800.13 | 40°02'17.885"N | 104°43'27.181"W | 0.52 | |
| 10094.00 | 89.200 | 181.150 | 7538.49 | 2925.82 | -2925.83 | 677.45 | 1717605.02 | 14540710.19 | 40°02'16.996"N | 104°43'27.208"W | 0.65 | |
| 10183.00 | 88.640 | 180.200 | 7540.16 | 3014.80 | -3014.81 | 676.40 | 1717604.24 | 14540621.25 | 40°02'16.117"N | 104°43'27.222"W | 1.24 | |
| 10273.00 | 88.180 | 179.980 | 7542.66 | 3104.76 | -3104.77 | 676.26 | 1717604.38 | 14540531.32 | 40°02'15.228"N | 104°43'27.224"W | 0.57 | |
| 10362.00 | 90.060 | 180.190 | 7544.03 | 3193.75 | -3193.76 | 676.13 | 1717604.52 | 14540442.37 | 40°02'14.348"N | 104°43'27.225"W | 2.13 | |
| 10452.00 | 89.720 | 179.900 | 7544.20 | 3283.75 | -3283.76 | 676.06 | 1717604.73 | 14540352.41 | 40°02'13.459"N | 104°43'27.226"W | 0.50 | |
| 10542.00 | 89.200 | 179.860 | 7545.05 | 3373.74 | -3373.75 | 676.24 | 1717605.19 | 14540262.45 | 40°02'12.570"N | 104°43'27.224"W | 0.58 | |
| 10632.00 | 88.580 | 179.560 | 7546.79 | 3463.72 | -3463.73 | 676.70 | 1717605.92 | 14540172.50 | 40°02'11.680"N | 104°43'27.218"W | 0.77 | |
| 10721.00 | 88.150 | 179.560 | 7549.33 | 3552.68 | -3552.70 | 677.38 | 1717606.88 | 14540083.58 | 40°02'10.801"N | 104°43'27.209"W | 0.48 | |
| 10811.00 | 89.630 | 181.040 | 7551.08 | 3642.66 | -3642.67 | 676.91 | 1717606.68 | 14539993.64 | 40°02'09.912"N | 104°43'27.215"W | 2.33 | |
| 10901.00 | 91.390 | 181.370 | 7550.27 | 3732.63 | -3732.64 | 675.02 | 1717605.07 | 14539903.69 | 40°02'09.023"N | 104°43'27.240"W | 1.99 | |
| 10990.00 | 91.050 | 181.310 | 7548.38 | 3821.59 | -3821.60 | 672.94 | 1717603.26 | 14539814.77 | 40°02'08.144"N | 104°43'27.266"W | 0.39 | |
| 11080.00 | 90.920 | 180.980 | 7546.83 | 3911.56 | -3911.57 | 671.14 | 1717601.74 | 14539724.83 | 40°02'07.255"N | 104°43'27.290"W | 0.39 | |
| 11169.00 | 90.280 | 180.740 | 7545.90 | 4000.54 | -4000.55 | 669.80 | 1717600.68 | 14539635.88 | 40°02'06.375"N | 104°43'27.307"W | 0.77 | |
| 11259.00 | 89.850 | 180.550 | 7545.80 | 4090.54 | -4090.55 | 668.79 | 1717599.94 | 14539545.92 | 40°02'05.486"N | 104°43'27.320"W | 0.52 | |
| 11348.00 | 89.910 | 180.580 | 7545.98 | 4179.53 | -4179.54 | 667.91 | 1717599.34 | 14539456.95 | 40°02'04.607"N | 104°43'27.331"W | 0.08 | |
| 11438.00 | 89.660 | 180.300 | 7546.32 | 4269.53 | -4269.54 | 667.22 | 1717598.92 | 14539366.99 | 40°02'03.717"N | 104°43'27.340"W | 0.42 | |
| 11527.00 | 90.920 | 178.770 | 7545.87 | 4358.52 | -4358.53 | 667.94 | 1717599.92 | 14539278.04 | 40°02'02.838"N | 104°43'27.331"W | 2.23 | |
| 11573.00† | 90.782 | 178.581 | 7545.19 | 4404.50 | -4404.51 | 669.01 | 1717601.12 | 14539232.08 | 40°02'02.383"N | 104°43'27.317"W | 0.51 | ENTER RADIUS TOE (1623'FSL & 2293'FEL, SEC.24) 40.0339954 -104.7242548 |
| 11617.00 | 90.650 | 178.400 | 7544.64 | 4448.48 | -4448.49 | 670.17 | 1717602.41 | 14539188.12 | 40°02'01.949"N | 104°43'27.302"W | 0.51 | |
| 11707.00 | 89.780 | 177.700 | 7544.30 | 4538.43 | -4538.44 | 673.23 | 1717605.75 | 14539098.22 | 40°02'01.060"N | 104°43'27.263"W | 1.24 | |
| 11796.00 | 91.290 | 178.310 | 7543.47 | 4627.37 | -4627.38 | 676.33 | 1717609.12 | 14539009.32 | 40°02'00.181"N | 104°43'27.223"W | 1.83 | |
| 11886.00 | 91.320 | 178.160 | 7541.42 | 4717.30 | -4717.31 | 679.10 | 1717612.17 | 14538919.43 | 40°01'59.292"N | 104°43'27.188"W | 0.17 | |
| 11975.00 | 91.260 | 179.790 | 7539.42 | 4806.26 | -4806.27 | 680.69 | 1717614.03 | 14538830.51 | 40°01'58.413"N | 104°43'27.167"W | 1.83 | |
| 12065.00 | 89.910 | 179.070 | 7538.50 | 4896.25 | -4896.26 | 681.59 | 1717615.20 | 14538740.56 | 40°01'57.524"N | 104°43'27.156"W | 1.70 | |
| 12154.00 | 89.540 | 179.610 | 7538.92 | 4985.24 | -4985.25 | 682.61 | 1717616.50 | 14538651.61 | 40°01'56.644"N | 104°43'27.143"W | 0.74 | |
| 12244.00 | 88.950 | 179.860 | 7540.11 | 5075.23 | -5075.25 | 683.03 | 1717617.19 | 14538561.66 | 40°01'55.755"N | 104°43'27.137"W | 0.71 | |
| 12334.00 | 88.680 | 179.470 | 7541.97 | 5165.21 | -5165.22 | 683.55 | 1717617.99 | 14538471.71 | 40°01'54.866"N | 104°43'27.130"W | 0.53 | |
| 12423.00 | 88.520 | 179.140 | 7544.15 | 5254.18 | -5254.19 | 684.63 | 1717619.35 | 14538382.79 | 40°01'53.987"N | 104°43'27.117"W | 0.41 | |
| 12513.00 | 87.840 | 179.170 | 7547.00 | 5344.12 | -5344.14 | 685.96 | 1717620.95 | 14538292.88 | 40°01'53.098"N | 104°43'27.100"W | 0.76 | |
| 12603.00 | 87.510 | 178.490 | 7550.66 | 5434.03 | -5434.04 | 687.79 | 1717623.06 | 14538203.02 | 40°01'52.209"N | 104°43'27.076"W | 0.84 | |

| REFERENCE WELLPATH IDENTIFICATION | | | |
|-----------------------------------|--------------------------------------|----------|--|
| Operator | KERR-MCGEE OIL & GAS ONSHORE LP (WA) | Slot | SLOT#37 AZUL 13-20HZ (747'FSL & 2326'FWL,SEC.13) |
| Area | COLORADO | Well | AZUL 13-20HZ |
| Field | WELD COUNTY (UTM/TRUE NORTH) | Wellbore | AZUL 13-20HZ AWB |
| Facility | SEC.13-T1N-R66W | | |

| WELLPATH DATA (182 stations) | | | | | | | | | | | | |
|------------------------------|--------------------|----------------|-------------|-------------------|---------------|--------------|----------------------|-----------------------|----------------|-----------------|------------------|---|
| MD [ft] | Inclination [°] | Azimuth [°] | TVD [ft] | Vert Sect [ft] | North [ft] | East [ft] | Grid East [US ft] | Grid North [US ft] | Latitude | Longitude | DLS [°/100ft] | Comments |
| 12681.00 | 86.950 | 177.750 | 7554.43 | 5511.90 | -5511.91 | 690.35 | 1717625.85 | 14538125.19 | 40°01'51.440"N | 104°43'27.043"W | 1.19 | LAST BHGE MWD+IFR1+SC SURVEY |
| 12727.00 | 86.950 | 177.750 | 7556.87 | 5557.80 | -5557.81 | 692.15 | 1717627.80 | 14538079.31 | 40°01'50.986"N | 104°43'27.020"W | 0.00 | PTB (470'FSL & 2269'FEL,SEC.24) 40.0308295 -104.7241722 |

| TARGETS | | | | | | | | |
|---|----------|------------|-----------|-------------------|--------------------|----------------|-----------------|---------|
| Name | TVD [ft] | North [ft] | East [ft] | Grid East [US ft] | Grid North [US ft] | Latitude | Longitude | Shape |
| SEC.24-T1N-R66W | -17.00 | 166.08 | -1166.40 | 1715752.42 | 14543795.21 | 40°02'47.551"N | 104°43'50.916"W | polygon |
| AZUL 13-20HZ HEEL REV-1(50'FNL & 2285'FEL,SEC.24) | 7502.00 | -791.61 | 682.54 | 1717603.56 | 14542843.57 | 40°02'38.087"N | 104°43'27.142"W | point |
| AZUL 13-20HZ BHL REV-1(468'FSL & 2279'FEL,SEC.24) | 7573.00 | -5560.16 | 682.43 | 1717618.09 | 14538076.93 | 40°01'50.963"N | 104°43'27.145"W | point |
| AZUL 13-20HZ LANDBOX | 7580.00 | 0.00 | 0.00 | 1716918.87 | 14543632.78 | 40°02'45.910"N | 104°43'35.918"W | polygon |
| AZUL 13-20HZ RADIUS 1 | 7580.00 | -4706.24 | 320.82 | 1717254.00 | 14538929.40 | 40°01'59.402"N | 104°43'31.794"W | polygon |
| AZUL 13-20HZ RADIUS 2 | 7580.00 | -733.77 | 326.61 | 1717247.60 | 14542900.30 | 40°02'38.659"N | 104°43'31.718"W | polygon |

| WELLPATH COMPOSITION - Ref Wellbore: AZUL 13-20HZ AWB | | | | Ref Wellpath: AZUL 13-20HZ AWP | | | |
|---|-------------|---|--|---|--|------------------|--|
| Start MD [ft] | End MD [ft] | Positional Uncertainty Model | | Log Name/Comment | | Wellbore | |
| 21.00 | 1835.00 | Custom APC_ISCWSA REV 2 MWD+IFR1 (approximation) | | Custom APC ISCWSA Rev-2 MWD+IFR1 <129 - 1835> | | AZUL 13-20HZ AWB | |
| 1835.00 | 12681.00 | Custom APC_ISCWSA REV 2 MWD+IFR1+SC (approximation) | | BHGE Custom APC ISCWSA Rev-2 MWD+IFR1+SC <1936 - 12681> | | AZUL 13-20HZ AWB | |
| 12681.00 | 12727.00 | Blind Drilling (std) | | Projection to bit | | AZUL 13-20HZ AWB | |

| REFERENCE WELLPATH IDENTIFICATION | | | |
|-----------------------------------|--------------------------------------|----------|--|
| Operator | KERR-MCGEE OIL & GAS ONSHORE LP (WA) | Slot | SLOT#37 AZUL 13-20HZ (747'FSL & 2326'FWL,SEC.13) |
| Area | COLORADO | Well | AZUL 13-20HZ |
| Field | WELD COUNTY (UTM/TRUE NORTH) | Wellbore | AZUL 13-20HZ AWB |
| Facility | SEC.13-T1N-R66W | | |

| WELLPATH COMMENTS | | | | |
|-------------------|--------------------|----------------|-------------|---|
| MD [ft] | Inclination [°] | Azimuth [°] | TVD [ft] | Comment |
| 129.00 | 0.350 | 161.210 | 129.00 | FIRST SURFACE MWD+IFR1 SURVEY |
| 1835.00 | 18.280 | 107.330 | 1792.65 | LAST SURFACE MWD+IFR1 SURVEY |
| 1936.00 | 18.490 | 107.770 | 1888.49 | FIRST BHGE MWD+IFR1+SC SURVEY |
| 6830.00 | 2.864 | 188.165 | 6733.99 | KOP |
| 8066.00 | 88.188 | 178.480 | 7520.20 | LANDING (152'FNL & 2306'FEL,SEC.24) 40.0436192 -104.7242793 |
| 8212.00 | 87.536 | 178.221 | 7523.00 | EXIT RADIUS HEEL (298'FNL & 2302'FEL,SEC.24) 40.0432187 -104.7242643 |
| 11573.00 | 90.782 | 178.581 | 7545.19 | ENTER RADIUS TOE (1623'FSL & 2293'FEL,SEC.24) 40.0339954 -104.7242548 |
| 12681.00 | 86.950 | 177.750 | 7554.43 | LAST BHGE MWD+IFR1+SC SURVEY |
| 12727.00 | 86.950 | 177.750 | 7556.87 | PTB (470'FSL & 2269'FEL,SEC.24) 40.0308295 -104.7241722 |