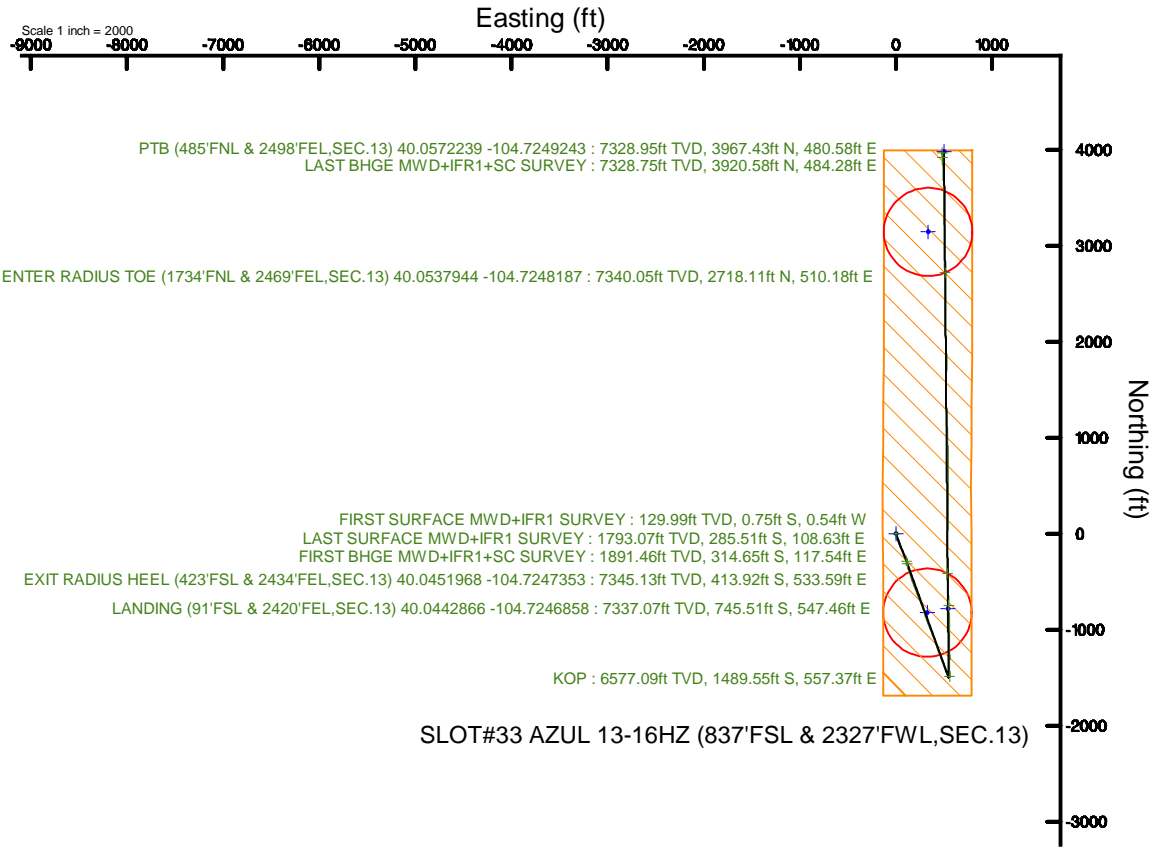
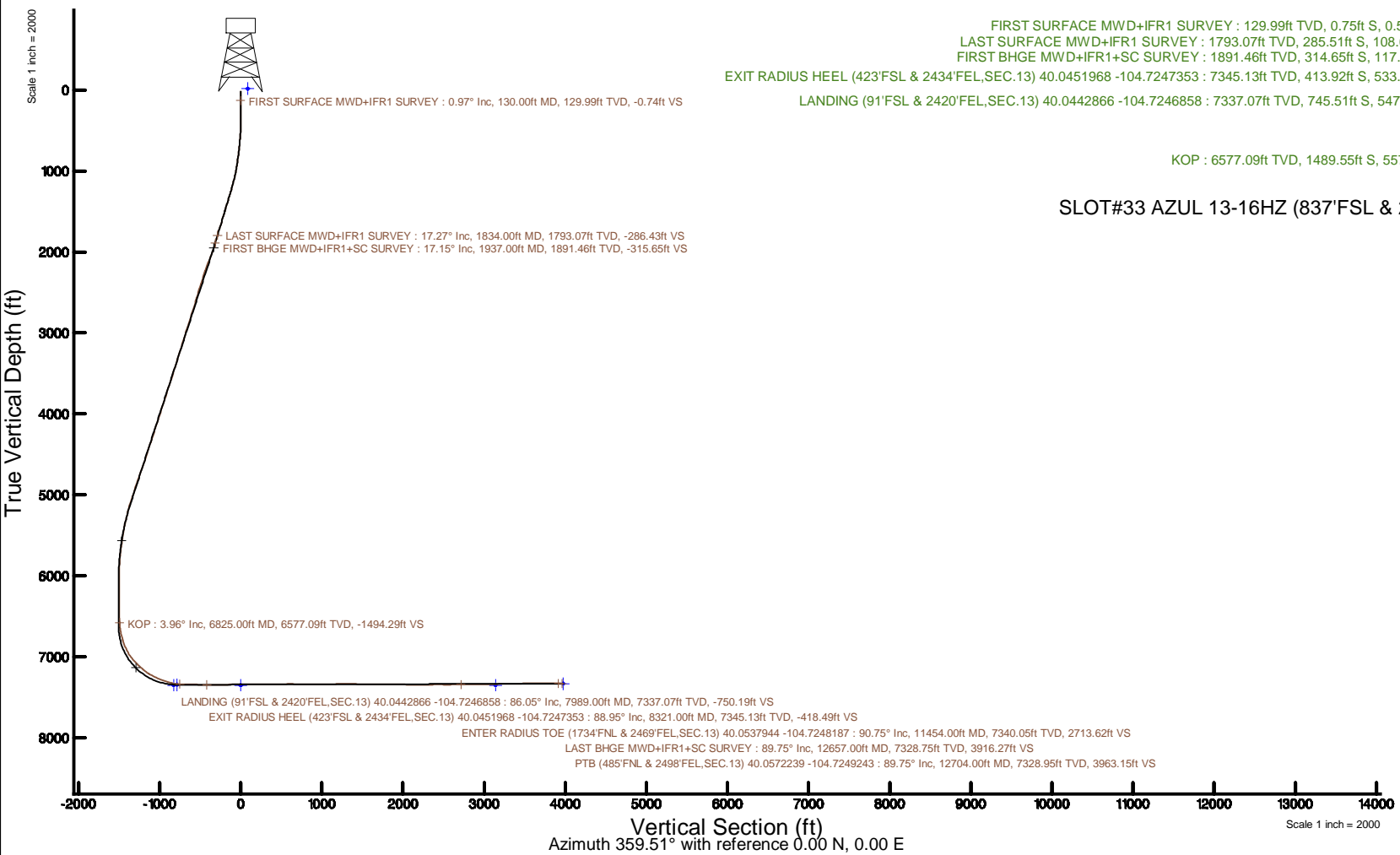


# KERR-MCGEE OIL & GAS ONSHORE LP (WA)

|                                                                                                |                                                              |
|------------------------------------------------------------------------------------------------|--------------------------------------------------------------|
| Location: COLORADO                                                                             | Slot: SLOT#33 AZUL 13-16HZ (837'FSL & 2327'FWL,SEC.13)       |
| Field: WELD COUNTY (UTM/TRUE NORTH)                                                            | Well: AZUL 13-16HZ                                           |
| Facility: SEC.13-T1N-R66W                                                                      | Wellbore: AZUL 13-16HZ PWB                                   |
| Plot reference wellpath is AZUL 13-16HZ PWP Rev-A.0                                            | Grid System: NAD83 / UTM Zone 13 North, US feet              |
| True vertical depths are referenced to PD 464 (21') (RT)                                       | * = Wellpath was transformed from a different geodetic datum |
| Measured depths are referenced to PD 464 (21') (RT)                                            | North Reference: True north                                  |
| PD 464 (21') (RT) to Mean Sea Level: 5071 feet                                                 | Scale: True distance                                         |
| Mean Sea Level to Mud line (At Slot: SLOT#33 AZUL 13-16HZ (837'FSL & 2327'FWL,SEC.13)): 0 feet | Depths are in feet                                           |
| Coordinates are in feet referenced to Slot                                                     | Created by: painsetr on 2018-05-10                           |
|                                                                                                | Database: WA_DEN_Anadarko_Defn                               |



# Actual Wellpath Report

AZUL 13-16HZ AWP

Page 1 of 7

| REFERENCE WELLPATH IDENTIFICATION |                                      |          |                                                  |
|-----------------------------------|--------------------------------------|----------|--------------------------------------------------|
| Operator                          | KERR-MCGEE OIL & GAS ONSHORE LP (WA) | Slot     | SLOT#33 AZUL 13-16HZ (837'FSL & 2327'FWL,SEC.13) |
| Area                              | COLORADO                             | Well     | AZUL 13-16HZ                                     |
| Field                             | WELD COUNTY (UTM/TRUE NORTH)         | Wellbore | AZUL 13-16HZ AWB                                 |
| Facility                          | SEC.13-T1N-R66W                      |          |                                                  |

| REPORT SETUP INFORMATION |                                    |                      |                                           |
|--------------------------|------------------------------------|----------------------|-------------------------------------------|
| Projection System        | NAD83 / UTM Zone 13 North, US feet | Software System      | WellArchitect® 5.0                        |
| North Reference          | True                               | User                 | Painsetr                                  |
| Scale                    | 0.999607                           | Report Generated     | 5/10/2018 at 7:42 AM                      |
| Convergence at slot      | 0.18° East                         | Database/Source file | WA_DEN_Anadarko_Defn/AZUL_13-16HZ_AWP.xml |

| WELLPATH LOCATION     |                   |          |                  |                 |                        |                 |
|-----------------------|-------------------|----------|------------------|-----------------|------------------------|-----------------|
|                       | Local coordinates |          | Grid coordinates |                 | Geographic coordinates |                 |
|                       | North[ft]         | East[ft] | Easting[US ft]   | Northing[US ft] | Latitude               | Longitude       |
| Slot Location         | -4233.35          | -564.15  | 1716919.37       | 14543722.70     | 40°02'46.799"N         | 104°43'35.908"W |
| Facility Reference Pt |                   |          | 1717470.20       | 14547956.10     | 40°03'28.634"N         | 104°43'28.654"W |
| Field Reference Pt    |                   |          | 1698235.31       | 14552047.82     | 40°04'09.600"N         | 104°47'36.000"W |

| WELLPATH DATUM           |                   |                                                                                          |                   |
|--------------------------|-------------------|------------------------------------------------------------------------------------------|-------------------|
| Calculation method       | Minimum curvature | PD 464 (21') (RT) to Facility Vertical Datum                                             | 5071.00ft         |
| Horizontal Reference Pt  | Slot              | PD 464 (21') (RT) to Mean Sea Level                                                      | 5071.00ft         |
| Vertical Reference Pt    | PD 464 (21') (RT) | PD 464 (21') (RT) to Mud Line at Slot (SLOT#33 AZUL 13-16HZ (837'FSL & 2327'FWL,SEC.13)) | 5071.00ft         |
| MD Reference Pt          | PD 464 (21') (RT) | Section Origin                                                                           | N 0.00, E 0.00 ft |
| Field Vertical Reference | Mean Sea Level    | Section Azimuth                                                                          | 359.51°           |

| REFERENCE WELLPATH IDENTIFICATION |                                      |          |                                                  |
|-----------------------------------|--------------------------------------|----------|--------------------------------------------------|
| Operator                          | KERR-MCGEE OIL & GAS ONSHORE LP (WA) | Slot     | SLOT#33 AZUL 13-16HZ (837'FSL & 2327'FWL,SEC.13) |
| Area                              | COLORADO                             | Well     | AZUL 13-16HZ                                     |
| Field                             | WELD COUNTY (UTM/TRUE NORTH)         | Wellbore | AZUL 13-16HZ AWB                                 |
| Facility                          | SEC.13-T1N-R66W                      |          |                                                  |

| WELLPATH DATA (180 stations) † = interpolated/extrapolated station |                 |             |          |                |            |           |                   |                    |                |                 |               |                               |
|--------------------------------------------------------------------|-----------------|-------------|----------|----------------|------------|-----------|-------------------|--------------------|----------------|-----------------|---------------|-------------------------------|
| MD [ft]                                                            | Inclination [°] | Azimuth [°] | TVD [ft] | Vert Sect [ft] | North [ft] | East [ft] | Grid East [US ft] | Grid North [US ft] | Latitude       | Longitude       | DLS [°/100ft] | Comments                      |
| 0.00                                                               | 0.00            | 215.790     | 0.00     | 0.00           | 0.00       | 0.00      | 1716919.37        | 14543722.70        | 40°02'46.799"N | 104°43'35.908"W | 0.00          |                               |
| 21.00                                                              | 0.000           | 215.790     | 21.00    | 0.00           | 0.00       | 0.00      | 1716919.37        | 14543722.70        | 40°02'46.799"N | 104°43'35.908"W | 0.00          |                               |
| 130.00                                                             | 0.970           | 215.790     | 129.99   | -0.74          | -0.75      | -0.54     | 1716918.83        | 14543721.95        | 40°02'46.792"N | 104°43'35.915"W | 0.89          | FIRST SURFACE MWD+IFR1 SURVEY |
| 162.00                                                             | 0.830           | 219.300     | 161.99   | -1.14          | -1.15      | -0.84     | 1716918.53        | 14543721.55        | 40°02'46.788"N | 104°43'35.919"W | 0.47          |                               |
| 193.00                                                             | 0.310           | 292.430     | 192.99   | -1.28          | -1.29      | -1.06     | 1716918.31        | 14543721.41        | 40°02'46.786"N | 104°43'35.922"W | 2.57          |                               |
| 225.00                                                             | 0.350           | 336.550     | 224.99   | -1.16          | -1.17      | -1.18     | 1716918.19        | 14543721.53        | 40°02'46.787"N | 104°43'35.923"W | 0.78          |                               |
| 257.00                                                             | 1.050           | 318.000     | 256.99   | -0.85          | -0.86      | -1.42     | 1716917.95        | 14543721.84        | 40°02'46.791"N | 104°43'35.926"W | 2.27          |                               |
| 288.00                                                             | 0.920           | 308.510     | 287.98   | -0.48          | -0.49      | -1.80     | 1716917.57        | 14543722.20        | 40°02'46.794"N | 104°43'35.931"W | 0.67          |                               |
| 319.00                                                             | 0.790           | 305.520     | 318.98   | -0.20          | -0.21      | -2.17     | 1716917.20        | 14543722.48        | 40°02'46.797"N | 104°43'35.936"W | 0.44          |                               |
| 351.00                                                             | 0.880           | 310.360     | 350.98   | 0.10           | 0.07       | -2.54     | 1716916.83        | 14543722.77        | 40°02'46.800"N | 104°43'35.941"W | 0.36          |                               |
| 382.00                                                             | 0.530           | 311.500     | 381.97   | 0.35           | 0.32       | -2.83     | 1716916.54        | 14543723.01        | 40°02'46.802"N | 104°43'35.944"W | 1.13          |                               |
| 414.00                                                             | 0.400           | 140.290     | 413.97   | 0.36           | 0.33       | -2.87     | 1716916.50        | 14543723.03        | 40°02'46.802"N | 104°43'35.945"W | 2.90          |                               |
| 446.00                                                             | 1.360           | 148.200     | 445.97   | -0.05          | -0.07      | -2.60     | 1716916.77        | 14543722.62        | 40°02'46.798"N | 104°43'35.941"W | 3.02          |                               |
| 477.00                                                             | 2.860           | 150.220     | 476.95   | -1.04          | -1.06      | -2.02     | 1716917.35        | 14543721.64        | 40°02'46.789"N | 104°43'35.934"W | 4.84          |                               |
| 509.00                                                             | 3.600           | 146.880     | 508.90   | -2.58          | -2.59      | -1.07     | 1716918.30        | 14543720.11        | 40°02'46.773"N | 104°43'35.922"W | 2.39          |                               |
| 540.00                                                             | 3.780           | 142.480     | 539.83   | -4.22          | -4.22      | 0.08      | 1716919.46        | 14543718.49        | 40°02'46.757"N | 104°43'35.907"W | 1.08          |                               |
| 572.00                                                             | 4.570           | 149.520     | 571.75   | -6.16          | -6.15      | 1.37      | 1716920.76        | 14543716.55        | 40°02'46.738"N | 104°43'35.890"W | 2.94          |                               |
| 604.00                                                             | 5.360           | 153.380     | 603.63   | -8.61          | -8.59      | 2.69      | 1716922.08        | 14543714.12        | 40°02'46.714"N | 104°43'35.873"W | 2.68          |                               |
| 636.00                                                             | 5.580           | 159.970     | 635.48   | -11.42         | -11.39     | 3.89      | 1716923.29        | 14543711.33        | 40°02'46.686"N | 104°43'35.858"W | 2.08          |                               |
| 668.00                                                             | 6.420           | 163.050     | 667.30   | -14.60         | -14.56     | 4.94      | 1716924.35        | 14543708.16        | 40°02'46.655"N | 104°43'35.844"W | 2.81          |                               |
| 700.00                                                             | 6.200           | 166.040     | 699.11   | -18.00         | -17.95     | 5.88      | 1716925.30        | 14543704.78        | 40°02'46.622"N | 104°43'35.832"W | 1.24          |                               |
| 732.00                                                             | 6.770           | 168.320     | 730.91   | -21.53         | -21.47     | 6.68      | 1716926.11        | 14543701.26        | 40°02'46.587"N | 104°43'35.822"W | 1.95          |                               |
| 763.00                                                             | 6.900           | 168.850     | 761.69   | -25.15         | -25.09     | 7.41      | 1716926.85        | 14543697.65        | 40°02'46.551"N | 104°43'35.813"W | 0.47          |                               |
| 795.00                                                             | 7.250           | 167.620     | 793.44   | -29.02         | -28.95     | 8.22      | 1716927.67        | 14543693.79        | 40°02'46.513"N | 104°43'35.802"W | 1.19          |                               |
| 827.00                                                             | 7.210           | 162.440     | 825.19   | -32.91         | -32.83     | 9.26      | 1716928.72        | 14543689.91        | 40°02'46.475"N | 104°43'35.789"W | 2.04          |                               |
| 859.00                                                             | 7.780           | 158.740     | 856.91   | -36.86         | -36.77     | 10.65     | 1716930.12        | 14543685.98        | 40°02'46.436"N | 104°43'35.771"W | 2.33          |                               |
| 890.00                                                             | 8.390           | 154.790     | 887.61   | -40.87         | -40.77     | 12.37     | 1716931.86        | 14543681.99        | 40°02'46.396"N | 104°43'35.749"W | 2.66          |                               |
| 922.00                                                             | 9.800           | 158.740     | 919.20   | -45.54         | -45.42     | 14.35     | 1716933.85        | 14543677.35        | 40°02'46.350"N | 104°43'35.723"W | 4.82          |                               |
| 954.00                                                             | 10.550          | 156.110     | 950.70   | -50.77         | -50.63     | 16.53     | 1716936.04        | 14543672.14        | 40°02'46.299"N | 104°43'35.695"W | 2.76          |                               |
| 1017.00                                                            | 11.870          | 157.160     | 1012.50  | -62.06         | -61.88     | 21.38     | 1716940.93        | 14543660.91        | 40°02'46.187"N | 104°43'35.633"W | 2.12          |                               |
| 1049.00                                                            | 13.540          | 158.740     | 1043.71  | -68.61         | -68.40     | 24.01     | 1716943.58        | 14543654.40        | 40°02'46.123"N | 104°43'35.599"W | 5.33          |                               |
| 1081.00                                                            | 14.150          | 159.800     | 1074.78  | -75.79         | -75.57     | 26.72     | 1716946.31        | 14543647.25        | 40°02'46.052"N | 104°43'35.564"W | 2.06          |                               |
| 1112.00                                                            | 14.630          | 160.680     | 1104.81  | -83.07         | -82.82     | 29.33     | 1716948.93        | 14543640.01        | 40°02'45.981"N | 104°43'35.531"W | 1.70          |                               |
| 1144.00                                                            | 15.210          | 161.030     | 1135.73  | -90.87         | -90.60     | 32.03     | 1716951.66        | 14543632.24        | 40°02'45.904"N | 104°43'35.496"W | 1.83          |                               |
| 1176.00                                                            | 15.820          | 161.560     | 1166.57  | -99.00         | -98.71     | 34.77     | 1716954.43        | 14543624.14        | 40°02'45.824"N | 104°43'35.461"W | 1.96          |                               |
| 1208.00                                                            | 16.130          | 162.700     | 1197.33  | -107.41        | -107.09    | 37.47     | 1716957.15        | 14543615.77        | 40°02'45.741"N | 104°43'35.426"W | 1.38          |                               |
| 1239.00                                                            | 16.880          | 162.000     | 1227.05  | -115.82        | -115.48    | 40.14     | 1716959.85        | 14543607.39        | 40°02'45.658"N | 104°43'35.392"W | 2.50          |                               |
| 1271.00                                                            | 17.620          | 158.660     | 1257.61  | -124.78        | -124.41    | 43.34     | 1716963.07        | 14543598.47        | 40°02'45.570"N | 104°43'35.351"W | 3.86          |                               |
| 1303.00                                                            | 17.890          | 157.070     | 1288.09  | -133.85        | -133.45    | 47.02     | 1716966.78        | 14543589.45        | 40°02'45.480"N | 104°43'35.303"W | 1.73          |                               |
| 1335.00                                                            | 18.110          | 155.490     | 1318.52  | -142.94        | -142.50    | 51.00     | 1716970.78        | 14543580.41        | 40°02'45.391"N | 104°43'35.252"W | 1.67          |                               |
| 1366.00                                                            | 18.020          | 154.880     | 1347.99  | -151.69        | -151.23    | 55.03     | 1716974.84        | 14543571.70        | 40°02'45.305"N | 104°43'35.200"W | 0.68          |                               |
| 1398.00                                                            | 17.890          | 157.690     | 1378.44  | -160.76        | -160.26    | 59.00     | 1716978.83        | 14543562.69        | 40°02'45.215"N | 104°43'35.149"W | 2.74          |                               |
| 1430.00                                                            | 17.670          | 157.250     | 1408.91  | -169.82        | -169.28    | 62.74     | 1716982.60        | 14543553.68        | 40°02'45.126"N | 104°43'35.101"W | 0.81          |                               |
| 1461.00                                                            | 18.110          | 157.870     | 1438.41  | -178.65        | -178.08    | 66.38     | 1716986.26        | 14543544.89        | 40°02'45.039"N | 104°43'35.054"W | 1.55          |                               |
| 1493.00                                                            | 18.590          | 158.130     | 1468.78  | -188.02        | -187.42    | 70.15     | 1716990.07        | 14543535.57        | 40°02'44.947"N | 104°43'35.006"W | 1.52          |                               |

| REFERENCE WELLPATH IDENTIFICATION |                                      |          |                                                  |
|-----------------------------------|--------------------------------------|----------|--------------------------------------------------|
| Operator                          | KERR-MCGEE OIL & GAS ONSHORE LP (WA) | Slot     | SLOT#33 AZUL 13-16HZ (837'FSL & 2327'FWL,SEC.13) |
| Area                              | COLORADO                             | Well     | AZUL 13-16HZ                                     |
| Field                             | WELD COUNTY (UTM/TRUE NORTH)         | Wellbore | AZUL 13-16HZ AWB                                 |
| Facility                          | SEC.13-T1N-R66W                      |          |                                                  |

| WELLPATH DATA (180 stations) |                 |             |          |                |            |           |                   |                    |                |                 |               |                               |
|------------------------------|-----------------|-------------|----------|----------------|------------|-----------|-------------------|--------------------|----------------|-----------------|---------------|-------------------------------|
| MD [ft]                      | Inclination [°] | Azimuth [°] | TVD [ft] | Vert Sect [ft] | North [ft] | East [ft] | Grid East [US ft] | Grid North [US ft] | Latitude       | Longitude       | DLS [°/100ft] | Comments                      |
| 1524.00                      | 18.810          | 157.160     | 1498.15  | -197.24        | -196.62    | 73.93     | 1716993.87        | 14543526.39        | 40°02'44.856"N | 104°43'34.957"W | 1.23          |                               |
| 1556.00                      | 17.840          | 157.160     | 1528.52  | -206.55        | -205.89    | 77.84     | 1716997.80        | 14543517.13        | 40°02'44.764"N | 104°43'34.907"W | 3.03          |                               |
| 1588.00                      | 17.230          | 157.870     | 1559.04  | -215.49        | -214.80    | 81.53     | 1717001.52        | 14543508.24        | 40°02'44.676"N | 104°43'34.860"W | 2.02          |                               |
| 1620.00                      | 17.490          | 158.310     | 1589.58  | -224.38        | -223.65    | 85.09     | 1717005.11        | 14543499.40        | 40°02'44.589"N | 104°43'34.814"W | 0.91          |                               |
| 1651.00                      | 17.750          | 157.160     | 1619.12  | -233.09        | -232.34    | 88.64     | 1717008.69        | 14543490.73        | 40°02'44.503"N | 104°43'34.768"W | 1.40          |                               |
| 1683.00                      | 18.060          | 157.600     | 1649.57  | -242.21        | -241.42    | 92.43     | 1717012.50        | 14543481.66        | 40°02'44.413"N | 104°43'34.720"W | 1.06          |                               |
| 1715.00                      | 18.630          | 156.900     | 1679.95  | -251.53        | -250.71    | 96.32     | 1717016.42        | 14543472.39        | 40°02'44.321"N | 104°43'34.669"W | 1.91          |                               |
| 1747.00                      | 18.280          | 159.260     | 1710.30  | -260.95        | -260.10    | 100.11    | 1717020.23        | 14543463.01        | 40°02'44.229"N | 104°43'34.621"W | 2.58          |                               |
| 1779.00                      | 18.330          | 160.410     | 1740.68  | -270.42        | -269.54    | 103.57    | 1717023.72        | 14543453.59        | 40°02'44.135"N | 104°43'34.576"W | 1.14          |                               |
| 1810.00                      | 17.620          | 163.670     | 1770.17  | -279.54        | -278.63    | 106.52    | 1717026.70        | 14543444.51        | 40°02'44.046"N | 104°43'34.538"W | 3.97          |                               |
| 1834.00                      | 17.270          | 162.260     | 1793.07  | -286.43        | -285.51    | 108.63    | 1717028.83        | 14543437.64        | 40°02'43.978"N | 104°43'34.511"W | 2.29          | LAST SURFACE MWD+IFR1 SURVEY  |
| 1937.00                      | 17.150          | 163.740     | 1891.46  | -315.65        | -314.65    | 117.54    | 1717037.83        | 14543408.54        | 40°02'43.690"N | 104°43'34.397"W | 0.44          | FIRST BHGE MWD+IFR1+SC SURVEY |
| 2026.00                      | 19.350          | 167.250     | 1975.98  | -342.69        | -341.63    | 124.47    | 1717044.84        | 14543381.59        | 40°02'43.423"N | 104°43'34.308"W | 2.76          |                               |
| 2115.00                      | 21.920          | 162.520     | 2059.27  | -372.99        | -371.87    | 132.72    | 1717053.17        | 14543351.39        | 40°02'43.124"N | 104°43'34.202"W | 3.44          |                               |
| 2205.00                      | 21.170          | 162.640     | 2142.98  | -404.61        | -403.40    | 142.61    | 1717063.16        | 14543319.90        | 40°02'42.812"N | 104°43'34.074"W | 0.83          |                               |
| 2295.00                      | 20.330          | 162.140     | 2227.14  | -435.09        | -433.79    | 152.26    | 1717072.89        | 14543289.55        | 40°02'42.512"N | 104°43'33.950"W | 0.95          |                               |
| 2384.00                      | 19.360          | 162.130     | 2310.85  | -463.92        | -462.55    | 161.52    | 1717082.25        | 14543260.83        | 40°02'42.228"N | 104°43'33.831"W | 1.09          |                               |
| 2474.00                      | 18.170          | 161.900     | 2396.07  | -491.53        | -490.09    | 170.46    | 1717091.26        | 14543233.33        | 40°02'41.956"N | 104°43'33.716"W | 1.32          |                               |
| 2563.00                      | 18.500          | 157.870     | 2480.55  | -517.89        | -516.36    | 180.09    | 1717100.97        | 14543207.10        | 40°02'41.696"N | 104°43'33.592"W | 1.47          |                               |
| 2653.00                      | 17.280          | 156.170     | 2566.20  | -543.43        | -541.81    | 190.87    | 1717111.83        | 14543181.69        | 40°02'41.445"N | 104°43'33.454"W | 1.47          |                               |
| 2743.00                      | 17.760          | 159.590     | 2652.03  | -568.61        | -566.91    | 201.06    | 1717122.09        | 14543156.64        | 40°02'41.197"N | 104°43'33.323"W | 1.26          |                               |
| 2833.00                      | 18.540          | 158.610     | 2737.55  | -594.89        | -593.09    | 211.07    | 1717132.17        | 14543130.49        | 40°02'40.938"N | 104°43'33.194"W | 0.93          |                               |
| 2922.00                      | 18.770          | 159.690     | 2821.87  | -621.58        | -619.70    | 221.20    | 1717142.38        | 14543103.93        | 40°02'40.675"N | 104°43'33.064"W | 0.47          |                               |
| 3012.00                      | 18.660          | 160.830     | 2907.11  | -648.84        | -646.88    | 230.95    | 1717152.21        | 14543076.79        | 40°02'40.406"N | 104°43'32.938"W | 0.42          |                               |
| 3102.00                      | 19.070          | 158.540     | 2992.28  | -676.21        | -674.16    | 241.06    | 1717162.40        | 14543049.55        | 40°02'40.137"N | 104°43'32.808"W | 0.94          |                               |
| 3191.00                      | 17.670          | 157.510     | 3076.74  | -702.31        | -700.17    | 251.54    | 1717172.96        | 14543023.58        | 40°02'39.880"N | 104°43'32.674"W | 1.61          |                               |
| 3281.00                      | 19.150          | 160.080     | 3162.14  | -728.90        | -726.67    | 261.80    | 1717183.29        | 14542997.12        | 40°02'39.618"N | 104°43'32.542"W | 1.88          |                               |
| 3371.00                      | 18.470          | 155.610     | 3247.33  | -755.86        | -753.54    | 272.72    | 1717194.29        | 14542970.30        | 40°02'39.352"N | 104°43'32.401"W | 1.77          |                               |
| 3460.00                      | 18.400          | 161.090     | 3331.77  | -782.07        | -779.67    | 283.09    | 1717204.74        | 14542944.21        | 40°02'39.094"N | 104°43'32.268"W | 1.95          |                               |
| 3550.00                      | 17.900          | 162.400     | 3417.29  | -808.77        | -806.29    | 291.88    | 1717213.60        | 14542917.63        | 40°02'38.831"N | 104°43'32.155"W | 0.72          |                               |
| 3639.00                      | 18.490          | 162.850     | 3501.84  | -835.36        | -832.81    | 300.17    | 1717221.98        | 14542891.14        | 40°02'38.569"N | 104°43'32.048"W | 0.68          |                               |
| 3729.00                      | 18.340          | 160.620     | 3587.24  | -862.43        | -859.81    | 309.08    | 1717230.96        | 14542864.19        | 40°02'38.302"N | 104°43'31.934"W | 0.80          |                               |
| 3819.00                      | 19.040          | 160.750     | 3672.49  | -889.73        | -887.02    | 318.62    | 1717240.58        | 14542837.01        | 40°02'38.033"N | 104°43'31.811"W | 0.78          |                               |
| 3909.00                      | 18.960          | 161.180     | 3757.59  | -917.51        | -914.72    | 328.18    | 1717250.22        | 14542809.35        | 40°02'37.759"N | 104°43'31.688"W | 0.18          |                               |
| 3998.00                      | 19.090          | 162.120     | 3841.72  | -945.13        | -942.26    | 337.31    | 1717259.43        | 14542781.86        | 40°02'37.487"N | 104°43'31.571"W | 0.37          |                               |
| 4088.00                      | 19.430          | 153.800     | 3926.70  | -972.66        | -969.70    | 348.44    | 1717270.64        | 14542754.46        | 40°02'37.216"N | 104°43'31.428"W | 3.07          |                               |
| 4177.00                      | 18.730          | 157.060     | 4010.82  | -999.21        | -996.14    | 360.54    | 1717282.82        | 14542728.06        | 40°02'36.955"N | 104°43'31.272"W | 1.43          |                               |
| 4267.00                      | 20.350          | 159.890     | 4095.63  | -1027.31       | -1024.15   | 371.56    | 1717293.92        | 14542700.10        | 40°02'36.678"N | 104°43'31.131"W | 2.08          |                               |
| 4357.00                      | 18.170          | 158.370     | 4180.59  | -1055.14       | -1051.89   | 382.11    | 1717304.55        | 14542672.40        | 40°02'36.404"N | 104°43'30.995"W | 2.49          |                               |
| 4446.00                      | 17.720          | 156.610     | 4265.26  | -1080.56       | -1077.22   | 392.60    | 1717315.12        | 14542647.11        | 40°02'36.154"N | 104°43'30.860"W | 0.79          |                               |
| 4536.00                      | 20.680          | 162.040     | 4350.25  | -1108.35       | -1104.92   | 402.94    | 1717325.54        | 14542619.46        | 40°02'35.880"N | 104°43'30.727"W | 3.84          |                               |
| 4626.00                      | 19.110          | 162.410     | 4434.88  | -1137.59       | -1134.08   | 412.30    | 1717334.98        | 14542590.34        | 40°02'35.592"N | 104°43'30.607"W | 1.75          |                               |
| 4716.00                      | 19.860          | 159.130     | 4519.73  | -1166.00       | -1162.41   | 422.20    | 1717344.96        | 14542562.05        | 40°02'35.312"N | 104°43'30.480"W | 1.47          |                               |
| 4805.00                      | 18.870          | 160.510     | 4603.69  | -1193.78       | -1190.10   | 432.38    | 1717355.23        | 14542534.40        | 40°02'35.038"N | 104°43'30.349"W | 1.23          |                               |
| 4895.00                      | 21.020          | 159.440     | 4688.29  | -1222.71       | -1218.94   | 442.91    | 1717365.84        | 14542505.61        | 40°02'34.753"N | 104°43'30.213"W | 2.42          |                               |

| REFERENCE WELLPATH IDENTIFICATION |                                      |          |                                                  |
|-----------------------------------|--------------------------------------|----------|--------------------------------------------------|
| Operator                          | KERR-MCGEE OIL & GAS ONSHORE LP (WA) | Slot     | SLOT#33 AZUL 13-16HZ (837'FSL & 2327'FWL,SEC.13) |
| Area                              | COLORADO                             | Well     | AZUL 13-16HZ                                     |
| Field                             | WELD COUNTY (UTM/TRUE NORTH)         | Wellbore | AZUL 13-16HZ AWB                                 |
| Facility                          | SEC.13-T1N-R66W                      |          |                                                  |

| WELLPATH DATA (180 stations) † = interpolated/extrapolated station |                    |                |             |                   |               |              |                      |                       |                |                 |                  |                                                                      |
|--------------------------------------------------------------------|--------------------|----------------|-------------|-------------------|---------------|--------------|----------------------|-----------------------|----------------|-----------------|------------------|----------------------------------------------------------------------|
| MD<br>(ft)                                                         | Inclination<br>(°) | Azimuth<br>(°) | TVD<br>(ft) | Vert Sect<br>(ft) | North<br>(ft) | East<br>(ft) | Grid East<br>(US ft) | Grid North<br>(US ft) | Latitude       | Longitude       | DLS<br>(°/100ft) | Comments                                                             |
| 4985.00                                                            | 19.100             | 160.320        | 4772.82     | -1251.78          | -1247.92      | 453.54       | 1717376.55           | 14542476.67           | 40°02'34.467"N | 104°43'30.077"W | 2.16             |                                                                      |
| 5074.00                                                            | 20.420             | 160.370        | 4856.58     | -1280.20          | -1276.26      | 463.66       | 1717386.76           | 14542448.38           | 40°02'34.187"N | 104°43'29.946"W | 1.48             |                                                                      |
| 5164.00                                                            | 18.960             | 160.150        | 4941.32     | -1308.83          | -1304.80      | 473.90       | 1717397.08           | 14542419.88           | 40°02'33.905"N | 104°43'29.815"W | 1.62             |                                                                      |
| 5254.00                                                            | 20.280             | 158.880        | 5026.09     | -1337.22          | -1333.10      | 484.48       | 1717407.75           | 14542391.62           | 40°02'33.625"N | 104°43'29.679"W | 1.54             |                                                                      |
| 5344.00                                                            | 18.030             | 158.340        | 5111.10     | -1364.81          | -1360.60      | 495.25       | 1717418.59           | 14542364.16           | 40°02'33.353"N | 104°43'29.540"W | 2.51             |                                                                      |
| 5433.00                                                            | 15.480             | 157.340        | 5196.32     | -1388.66          | -1384.37      | 504.91       | 1717428.32           | 14542340.44           | 40°02'33.118"N | 104°43'29.416"W | 2.88             |                                                                      |
| 5523.00                                                            | 14.360             | 159.370        | 5283.28     | -1410.26          | -1405.89      | 513.47       | 1717436.94           | 14542318.94           | 40°02'32.906"N | 104°43'29.306"W | 1.37             |                                                                      |
| 5612.00                                                            | 12.180             | 158.420        | 5369.90     | -1429.39          | -1424.96      | 520.81       | 1717444.34           | 14542299.91           | 40°02'32.717"N | 104°43'29.212"W | 2.46             |                                                                      |
| 5702.00                                                            | 10.850             | 157.800        | 5458.09     | -1446.11          | -1441.63      | 527.50       | 1717451.08           | 14542283.27           | 40°02'32.552"N | 104°43'29.126"W | 1.48             |                                                                      |
| 5792.00                                                            | 9.190              | 154.910        | 5546.71     | -1460.52          | -1455.98      | 533.75       | 1717457.37           | 14542268.94           | 40°02'32.411"N | 104°43'29.045"W | 1.93             |                                                                      |
| 5882.00                                                            | 8.600              | 159.210        | 5635.63     | -1473.37          | -1468.78      | 539.19       | 1717462.84           | 14542256.16           | 40°02'32.284"N | 104°43'28.975"W | 0.99             |                                                                      |
| 5971.00                                                            | 6.270              | 156.090        | 5723.88     | -1484.07          | -1479.45      | 543.52       | 1717467.21           | 14542245.51           | 40°02'32.179"N | 104°43'28.920"W | 2.66             |                                                                      |
| 6061.00                                                            | 4.510              | 149.230        | 5813.47     | -1491.64          | -1486.98      | 547.32       | 1717471.03           | 14542237.99           | 40°02'32.104"N | 104°43'28.871"W | 2.08             |                                                                      |
| 6151.00                                                            | 2.900              | 135.330        | 5903.29     | -1496.32          | -1491.64      | 550.73       | 1717474.46           | 14542233.35           | 40°02'32.058"N | 104°43'28.827"W | 2.04             |                                                                      |
| 6241.00                                                            | 1.710              | 133.720        | 5993.21     | -1498.89          | -1494.19      | 553.30       | 1717477.03           | 14542230.81           | 40°02'32.033"N | 104°43'28.794"W | 1.32             |                                                                      |
| 6330.00                                                            | 1.140              | 97.840         | 6082.18     | -1499.95          | -1495.23      | 555.14       | 1717478.87           | 14542229.78           | 40°02'32.023"N | 104°43'28.770"W | 1.16             |                                                                      |
| 6420.00                                                            | 1.700              | 46.560         | 6172.16     | -1499.17          | -1494.43      | 557.00       | 1717480.73           | 14542230.58           | 40°02'32.031"N | 104°43'28.746"W | 1.48             |                                                                      |
| 6509.00                                                            | 0.110              | 264.930        | 6261.15     | -1498.28          | -1493.53      | 557.87       | 1717481.60           | 14542231.48           | 40°02'32.040"N | 104°43'28.735"W | 2.01             |                                                                      |
| 6599.00                                                            | 0.470              | 306.210        | 6351.15     | -1498.06          | -1493.32      | 557.49       | 1717481.21           | 14542231.69           | 40°02'32.042"N | 104°43'28.740"W | 0.44             |                                                                      |
| 6688.00                                                            | 0.610              | 349.440        | 6440.14     | -1497.38          | -1492.64      | 557.11       | 1717480.83           | 14542232.37           | 40°02'32.048"N | 104°43'28.745"W | 0.47             |                                                                      |
| 6778.00                                                            | 0.870              | 17.450         | 6530.14     | -1496.26          | -1491.52      | 557.22       | 1717480.94           | 14542233.49           | 40°02'32.059"N | 104°43'28.743"W | 0.49             |                                                                      |
| 6825.00†                                                           | 3.963              | 1.532          | 6577.09     | -1494.29          | -1489.55      | 557.37       | 1717481.09           | 14542235.46           | 40°02'32.079"N | 104°43'28.742"W | 6.67             | KOP                                                                  |
| 6867.00                                                            | 6.760              | 359.720        | 6618.90     | -1490.37          | -1485.63      | 557.40       | 1717481.10           | 14542239.38           | 40°02'32.118"N | 104°43'28.741"W | 6.67             |                                                                      |
| 6957.00                                                            | 11.940             | 0.290          | 6707.67     | -1475.75          | -1471.01      | 557.42       | 1717481.08           | 14542253.99           | 40°02'32.262"N | 104°43'28.741"W | 5.76             |                                                                      |
| 7046.00                                                            | 16.980             | 356.930        | 6793.83     | -1453.55          | -1448.81      | 556.77       | 1717480.36           | 14542276.18           | 40°02'32.481"N | 104°43'28.749"W | 5.74             |                                                                      |
| 7136.00                                                            | 23.560             | 353.440        | 6878.21     | -1422.50          | -1417.79      | 554.01       | 1717477.50           | 14542307.18           | 40°02'32.788"N | 104°43'28.785"W | 7.43             |                                                                      |
| 7226.00                                                            | 29.390             | 2.330          | 6958.77     | -1382.51          | -1377.80      | 552.85       | 1717476.22           | 14542347.15           | 40°02'33.183"N | 104°43'28.800"W | 7.82             |                                                                      |
| 7315.00                                                            | 40.930             | 3.580          | 7031.41     | -1331.44          | -1326.71      | 555.57       | 1717478.78           | 14542398.23           | 40°02'33.688"N | 104°43'28.765"W | 12.99            |                                                                      |
| 7405.00                                                            | 46.110             | 358.020        | 7096.67     | -1269.55          | -1264.81      | 556.29       | 1717479.31           | 14542460.10           | 40°02'34.300"N | 104°43'28.755"W | 7.15             |                                                                      |
| 7494.00                                                            | 49.570             | 358.270        | 7156.40     | -1203.61          | -1198.88      | 554.16       | 1717476.98           | 14542526.00           | 40°02'34.951"N | 104°43'28.783"W | 3.89             |                                                                      |
| 7584.00                                                            | 58.820             | 0.080          | 7209.00     | -1130.70          | -1125.98      | 553.18       | 1717475.78           | 14542598.87           | 40°02'35.672"N | 104°43'28.795"W | 10.41            |                                                                      |
| 7674.00                                                            | 65.060             | 0.950          | 7251.32     | -1051.33          | -1046.60      | 553.91       | 1717476.26           | 14542678.21           | 40°02'36.456"N | 104°43'28.786"W | 6.99             |                                                                      |
| 7763.00                                                            | 69.310             | 358.680        | 7285.82     | -969.32           | -964.59       | 553.62       | 1717475.72           | 14542760.19           | 40°02'37.267"N | 104°43'28.790"W | 5.32             |                                                                      |
| 7853.00                                                            | 73.870             | 358.190        | 7314.24     | -883.97           | -879.26       | 551.28       | 1717473.12           | 14542845.49           | 40°02'38.110"N | 104°43'28.820"W | 5.09             |                                                                      |
| 7942.00                                                            | 82.550             | 358.560        | 7332.41     | -796.94           | -792.25       | 548.82       | 1717470.39           | 14542932.45           | 40°02'38.970"N | 104°43'28.851"W | 9.76             |                                                                      |
| 7989.00†                                                           | 86.054             | 358.120        | 7337.07     | -750.19           | -745.51       | 547.46       | 1717468.90           | 14542979.17           | 40°02'39.432"N | 104°43'28.869"W | 7.51             | LANDING (91'FSL & 2420'FEL,SEC.13) 40.0442866 -104.7246858           |
| 8032.00                                                            | 89.260             | 357.720        | 7338.83     | -707.25           | -702.58       | 545.90       | 1717467.21           | 14543022.08           | 40°02'39.856"N | 104°43'28.889"W | 7.51             |                                                                      |
| 8122.00                                                            | 88.950             | 357.480        | 7340.24     | -617.31           | -612.67       | 542.13       | 1717463.16           | 14543111.94           | 40°02'40.744"N | 104°43'28.937"W | 0.44             |                                                                      |
| 8211.00                                                            | 88.240             | 357.150        | 7342.42     | -528.41           | -523.80       | 537.97       | 1717458.72           | 14543200.77           | 40°02'41.623"N | 104°43'28.991"W | 0.88             |                                                                      |
| 8301.00                                                            | 88.800             | 358.050        | 7344.74     | -438.49           | -433.91       | 534.20       | 1717454.68           | 14543290.61           | 40°02'42.511"N | 104°43'29.039"W | 1.18             |                                                                      |
| 8321.00†                                                           | 88.953             | 358.482        | 7345.13     | -418.49           | -413.92       | 533.59       | 1717454.02           | 14543310.59           | 40°02'42.708"N | 104°43'29.047"W | 2.29             | EXIT RADIUS HEEL (423'FSL & 2434'FEL,SEC.13) 40.0451968 -104.7247353 |
| 8390.00                                                            | 89.480             | 359.970        | 7346.08     | -349.50           | -344.93       | 532.66       | 1717452.87           | 14543379.54           | 40°02'43.390"N | 104°43'29.059"W | 2.29             |                                                                      |
| 8480.00                                                            | 91.940             | 0.190          | 7344.96     | -259.52           | -254.95       | 532.79       | 1717452.72           | 14543469.49           | 40°02'44.279"N | 104°43'29.057"W | 2.74             |                                                                      |
| 8570.00                                                            | 91.200             | 0.580          | 7342.50     | -169.57           | -164.98       | 533.39       | 1717453.05           | 14543559.42           | 40°02'45.169"N | 104°43'29.050"W | 0.93             |                                                                      |
| 8660.00                                                            | 91.390             | 0.740          | 7340.46     | -79.61            | -75.01        | 534.43       | 1717453.81           | 14543649.36           | 40°02'46.058"N | 104°43'29.036"W | 0.28             |                                                                      |

| REFERENCE WELLPATH IDENTIFICATION |                                      |          |                                                  |
|-----------------------------------|--------------------------------------|----------|--------------------------------------------------|
| Operator                          | KERR-MCGEE OIL & GAS ONSHORE LP (WA) | Slot     | SLOT#33 AZUL 13-16HZ (837'FSL & 2327'FWL,SEC.13) |
| Area                              | COLORADO                             | Well     | AZUL 13-16HZ                                     |
| Field                             | WELD COUNTY (UTM/TRUE NORTH)         | Wellbore | AZUL 13-16HZ AWB                                 |
| Facility                          | SEC.13-T1N-R66W                      |          |                                                  |

| WELLPATH DATA (180 stations) † = interpolated/extrapolated station |                    |                |             |                   |               |              |                      |                       |                |                 |                |                                                                        |
|--------------------------------------------------------------------|--------------------|----------------|-------------|-------------------|---------------|--------------|----------------------|-----------------------|----------------|-----------------|----------------|------------------------------------------------------------------------|
| MD<br>[ft]                                                         | Inclination<br>[°] | Azimuth<br>[°] | TVD<br>[ft] | Vert Sect<br>[ft] | North<br>[ft] | East<br>[ft] | Grid East<br>[US ft] | Grid North<br>[US ft] | Latitude       | Longitude       | DLS<br>°/100ft | Comments                                                               |
| 8749.00                                                            | 92.250             | 1.160          | 7337.64     | 9.32              | 13.93         | 535.90       | 1717455.01           | 14543738.27           | 40°02'46.937"N | 104°43'29.017"W | 1.08           |                                                                        |
| 8839.00                                                            | 89.910             | 0.380          | 7335.94     | 99.27             | 103.90        | 537.11       | 1717455.94           | 14543828.20           | 40°02'47.826"N | 104°43'29.002"W | 2.74           |                                                                        |
| 8928.00                                                            | 89.850             | 0.790          | 7336.13     | 188.26            | 192.89        | 538.02       | 1717456.58           | 14543917.17           | 40°02'48.705"N | 104°43'28.990"W | 0.47           |                                                                        |
| 9018.00                                                            | 89.690             | 0.100          | 7336.49     | 278.24            | 282.89        | 538.72       | 1717457.00           | 14544007.13           | 40°02'49.595"N | 104°43'28.981"W | 0.79           |                                                                        |
| 9108.00                                                            | 89.970             | 0.050          | 7336.75     | 368.24            | 372.89        | 538.84       | 1717456.84           | 14544097.09           | 40°02'50.484"N | 104°43'28.979"W | 0.32           |                                                                        |
| 9198.00                                                            | 90.000             | 0.320          | 7336.78     | 458.23            | 462.89        | 539.13       | 1717456.86           | 14544187.06           | 40°02'51.373"N | 104°43'28.976"W | 0.30           |                                                                        |
| 9287.00                                                            | 91.170             | 1.030          | 7335.87     | 547.21            | 551.87        | 540.18       | 1717457.63           | 14544276.01           | 40°02'52.253"N | 104°43'28.962"W | 1.54           |                                                                        |
| 9377.00                                                            | 89.510             | 359.260        | 7335.34     | 637.19            | 641.87        | 540.40       | 1717457.58           | 14544365.97           | 40°02'53.142"N | 104°43'28.959"W | 2.70           |                                                                        |
| 9466.00                                                            | 89.200             | 358.540        | 7336.34     | 726.18            | 730.84        | 538.69       | 1717455.60           | 14544454.90           | 40°02'54.021"N | 104°43'28.981"W | 0.88           |                                                                        |
| 9556.00                                                            | 90.520             | 359.860        | 7336.56     | 816.18            | 820.83        | 537.44       | 1717454.07           | 14544544.85           | 40°02'54.911"N | 104°43'28.997"W | 2.07           |                                                                        |
| 9646.00                                                            | 89.970             | 358.830        | 7336.17     | 906.17            | 910.82        | 536.41       | 1717452.77           | 14544634.80           | 40°02'55.800"N | 104°43'29.010"W | 1.30           |                                                                        |
| 9735.00                                                            | 88.710             | 357.850        | 7337.20     | 995.15            | 999.78        | 533.83       | 1717449.92           | 14544723.71           | 40°02'56.679"N | 104°43'29.044"W | 1.79           |                                                                        |
| 9825.00                                                            | 90.710             | 357.870        | 7337.65     | 1085.10           | 1089.71       | 530.47       | 1717446.28           | 14544813.60           | 40°02'57.568"N | 104°43'29.087"W | 2.22           |                                                                        |
| 9914.00                                                            | 91.970             | 357.660        | 7335.57     | 1174.04           | 1178.61       | 527.00       | 1717442.54           | 14544902.46           | 40°02'58.446"N | 104°43'29.131"W | 1.44           |                                                                        |
| 10004.00                                                           | 90.400             | 357.520        | 7333.71     | 1263.96           | 1268.51       | 523.22       | 1717438.48           | 14544992.31           | 40°02'59.335"N | 104°43'29.180"W | 1.75           |                                                                        |
| 10093.00                                                           | 88.950             | 359.980        | 7334.22     | 1352.94           | 1357.48       | 521.28       | 1717436.27           | 14545081.24           | 40°03'00.214"N | 104°43'29.205"W | 3.21           |                                                                        |
| 10273.00                                                           | 88.770             | 0.100          | 7337.80     | 1532.90           | 1537.44       | 521.40       | 1717435.84           | 14545261.13           | 40°03'01.992"N | 104°43'29.203"W | 0.12           |                                                                        |
| 10362.00                                                           | 91.660             | 0.750          | 7337.46     | 1621.88           | 1626.43       | 522.06       | 1717436.23           | 14545350.08           | 40°03'02.872"N | 104°43'29.195"W | 3.33           |                                                                        |
| 10452.00                                                           | 88.550             | 1.000          | 7337.30     | 1711.84           | 1716.41       | 523.44       | 1717437.33           | 14545440.03           | 40°03'03.761"N | 104°43'29.177"W | 3.47           |                                                                        |
| 10542.00                                                           | 88.430             | 359.830        | 7339.67     | 1801.80           | 1806.37       | 524.09       | 1717437.70           | 14545529.96           | 40°03'04.650"N | 104°43'29.169"W | 1.31           |                                                                        |
| 10631.00                                                           | 89.820             | 357.860        | 7341.03     | 1890.77           | 1895.34       | 522.29       | 1717435.64           | 14545618.88           | 40°03'05.529"N | 104°43'29.192"W | 2.71           |                                                                        |
| 10721.00                                                           | 89.350             | 357.300        | 7341.68     | 1980.72           | 1985.26       | 518.49       | 1717431.56           | 14545708.75           | 40°03'06.418"N | 104°43'29.241"W | 0.81           |                                                                        |
| 10811.00                                                           | 89.540             | 358.190        | 7342.55     | 2070.67           | 2075.18       | 514.95       | 1717427.75           | 14545798.63           | 40°03'07.306"N | 104°43'29.286"W | 1.01           |                                                                        |
| 10900.00                                                           | 89.510             | 358.910        | 7343.29     | 2159.66           | 2164.15       | 512.70       | 1717425.22           | 14545887.56           | 40°03'08.186"N | 104°43'29.315"W | 0.81           |                                                                        |
| 10990.00                                                           | 90.650             | 0.500          | 7343.16     | 2249.65           | 2254.14       | 512.24       | 1717424.48           | 14545977.51           | 40°03'09.075"N | 104°43'29.321"W | 2.17           |                                                                        |
| 11079.00                                                           | 90.400             | 359.480        | 7342.35     | 2338.64           | 2343.14       | 512.22       | 1717424.19           | 14546066.47           | 40°03'09.954"N | 104°43'29.321"W | 1.18           |                                                                        |
| 11259.00                                                           | 89.600             | 359.740        | 7342.35     | 2518.64           | 2523.13       | 511.00       | 1717422.42           | 14546246.39           | 40°03'11.733"N | 104°43'29.337"W | 0.47           |                                                                        |
| 11348.00                                                           | 91.110             | 359.880        | 7341.80     | 2607.64           | 2612.13       | 510.70       | 1717421.85           | 14546335.35           | 40°03'12.613"N | 104°43'29.341"W | 1.70           |                                                                        |
| 11438.00                                                           | 90.830             | 359.610        | 7340.27     | 2697.62           | 2702.11       | 510.30       | 1717421.17           | 14546425.30           | 40°03'13.502"N | 104°43'29.346"W | 0.43           |                                                                        |
| 11454.00†                                                          | 90.747             | 359.538        | 7340.05     | 2713.62           | 2718.11       | 510.18       | 1717421.00           | 14546441.29           | 40°03'13.660"N | 104°43'29.347"W | 0.68           | ENTER RADIUS TOE (1734'FNL & 2469'FEL, SEC.13) 40.0537944 -104.7248187 |
| 11527.00                                                           | 90.370             | 359.210        | 7339.34     | 2786.62           | 2791.10       | 509.38       | 1717419.98           | 14546514.25           | 40°03'14.381"N | 104°43'29.357"W | 0.68           |                                                                        |
| 11617.00                                                           | 90.430             | 359.100        | 7338.71     | 2876.61           | 2881.09       | 508.06       | 1717418.38           | 14546604.20           | 40°03'15.271"N | 104°43'29.374"W | 0.14           |                                                                        |
| 11706.00                                                           | 90.520             | 358.540        | 7337.98     | 2965.60           | 2970.07       | 506.22       | 1717416.27           | 14546693.14           | 40°03'16.150"N | 104°43'29.398"W | 0.64           |                                                                        |
| 11796.00                                                           | 90.680             | 359.580        | 7337.03     | 3055.59           | 3060.05       | 504.75       | 1717414.52           | 14546783.08           | 40°03'17.039"N | 104°43'29.417"W | 1.17           |                                                                        |
| 11885.00                                                           | 90.770             | 359.250        | 7335.91     | 3144.59           | 3149.04       | 503.84       | 1717413.34           | 14546872.03           | 40°03'17.918"N | 104°43'29.429"W | 0.38           |                                                                        |
| 11975.00                                                           | 91.200             | 359.630        | 7334.36     | 3234.57           | 3239.02       | 502.96       | 1717412.19           | 14546961.97           | 40°03'18.808"N | 104°43'29.440"W | 0.64           |                                                                        |
| 12064.00                                                           | 91.820             | 359.120        | 7332.01     | 3323.54           | 3327.98       | 501.99       | 1717410.94           | 14547050.89           | 40°03'19.687"N | 104°43'29.452"W | 0.90           |                                                                        |
| 12154.00                                                           | 91.110             | 359.040        | 7329.71     | 3413.51           | 3417.94       | 500.54       | 1717409.22           | 14547140.81           | 40°03'20.576"N | 104°43'29.471"W | 0.79           |                                                                        |
| 12244.00                                                           | 90.090             | 359.190        | 7328.77     | 3503.50           | 3507.93       | 499.15       | 1717407.56           | 14547230.76           | 40°03'21.465"N | 104°43'29.489"W | 1.15           |                                                                        |
| 12333.00                                                           | 90.370             | 359.210        | 7328.41     | 3592.50           | 3596.92       | 497.91       | 1717406.04           | 14547319.71           | 40°03'22.345"N | 104°43'29.505"W | 0.32           |                                                                        |
| 12423.00                                                           | 89.780             | 358.410        | 7328.30     | 3682.49           | 3686.90       | 496.04       | 1717403.90           | 14547409.64           | 40°03'23.234"N | 104°43'29.529"W | 1.10           |                                                                        |
| 12513.00                                                           | 89.850             | 357.390        | 7328.59     | 3772.45           | 3776.83       | 492.75       | 1717400.33           | 14547499.54           | 40°03'24.123"N | 104°43'29.571"W | 1.14           |                                                                        |
| 12602.00                                                           | 90.060             | 356.600        | 7328.66     | 3861.37           | 3865.71       | 488.08       | 1717395.39           | 14547588.36           | 40°03'25.001"N | 104°43'29.631"W | 0.92           |                                                                        |
| 12657.00                                                           | 89.750             | 355.480        | 7328.75     | 3916.27           | 3920.58       | 484.28       | 1717391.42           | 14547643.20           | 40°03'25.543"N | 104°43'29.680"W | 2.11           | LAST BHGE MWD+IFR1+SC SURVEY                                           |
| 12704.00                                                           | 89.750             | 355.480        | 7328.95     | 3963.15           | 3967.43       | 480.58       | 1717387.58           | 14547690.02           | 40°03'26.006"N | 104°43'29.728"W | 0.00           | PTB (485'FNL & 2498'FEL, SEC.13) 40.0572239 -104.7249243               |

| REFERENCE WELLPATH IDENTIFICATION |                                      |          |                                                  |
|-----------------------------------|--------------------------------------|----------|--------------------------------------------------|
| Operator                          | KERR-MCGEE OIL & GAS ONSHORE LP (WA) | Slot     | SLOT#33 AZUL 13-16HZ (837'FSL & 2327'FWL,SEC.13) |
| Area                              | COLORADO                             | Well     | AZUL 13-16HZ                                     |
| Field                             | WELD COUNTY (UTM/TRUE NORTH)         | Wellbore | AZUL 13-16HZ AWB                                 |
| Facility                          | SEC.13-T1N-R66W                      |          |                                                  |

| HOLE & CASING SECTIONS - Ref Wellbore: AZUL 13-16HZ AWB Ref Wellpath: AZUL 13-16HZ AWP |               |             |               |                |              |                |                |              |              |
|----------------------------------------------------------------------------------------|---------------|-------------|---------------|----------------|--------------|----------------|----------------|--------------|--------------|
| String/Diameter                                                                        | Start MD [ft] | End MD [ft] | Interval [ft] | Start TVD [ft] | End TVD [ft] | Start N/S [ft] | Start E/W [ft] | End N/S [ft] | End E/W [ft] |
| 9.625in Casing Surface                                                                 | 21.00         | 1874.00     | 1853.00       | 21.00          | 1831.27      | 0.00           | 0.00           | -296.82      | 112.19       |

| TARGETS                                           |          |            |           |                   |                    |                |                 |         |
|---------------------------------------------------|----------|------------|-----------|-------------------|--------------------|----------------|-----------------|---------|
| Name                                              | TVD [ft] | North [ft] | East [ft] | Grid East [US ft] | Grid North [US ft] | Latitude       | Longitude       | Shape   |
| SEC.13-T1N-R66W                                   | -17.00   | 76.12      | -1167.18  | 1715752.42        | 14543795.21        | 40°02'47.551"N | 104°43'50.916"W | polygon |
| AZUL 13-16HZ BHL REV-1(470'FNL & 2479'FEL,SEC.13) | 7331.00  | 3982.00    | 499.98    | 1717406.93        | 14547704.64        | 40°03'26.150"N | 104°43'29.478"W | point   |
| AZUL 13-16HZ HEEL REV-1(50'FSL & 2426'FEL,SEC.13) | 7344.00  | -782.51    | 540.99    | 1717462.54        | 14542942.17        | 40°02'39.066"N | 104°43'28.952"W | point   |
| AZUL 13-16HZ LANDBOX                              | 7349.00  | 0.00       | 0.00      | 1716919.37        | 14543722.70        | 40°02'46.799"N | 104°43'35.908"W | polygon |
| AZUL 13-16HZ RADIUS 1                             | 7349.00  | 3143.73    | 334.61    | 1717244.20        | 14546866.20        | 40°03'17.866"N | 104°43'31.605"W | polygon |
| AZUL 13-16HZ RADIUS 2                             | 7349.00  | -823.73    | 325.84    | 1717247.60        | 14542900.30        | 40°02'38.659"N | 104°43'31.718"W | polygon |

| WELLPATH COMPOSITION - Ref Wellbore: AZUL 13-16HZ AWB Ref Wellpath: AZUL 13-16HZ AWP |             |                                                     |                                                         |                  |
|--------------------------------------------------------------------------------------|-------------|-----------------------------------------------------|---------------------------------------------------------|------------------|
| Start MD [ft]                                                                        | End MD [ft] | Positional Uncertainty Model                        | Log Name/Comment                                        | Wellbore         |
| 21.00                                                                                | 1834.00     | Custom APC ISCWSA REV 2 MWD+IFR1 (approximation)    | Custom APC ISCWSA Rev-2 MWD+IFR1 <130 - 1834>           | AZUL 13-16HZ AWB |
| 1834.00                                                                              | 12657.00    | Custom APC ISCWSA REV 2 MWD+IFR1+SC (approximation) | BHGE Custom APC ISCWSA Rev-2 MWD+IFR1+SC <1937 - 12657> | AZUL 13-16HZ AWB |
| 12657.00                                                                             | 12704.00    | Blind Drilling (std)                                | Projection to bit                                       | AZUL 13-16HZ AWB |

| REFERENCE WELLPATH IDENTIFICATION |                                      |          |                                                  |
|-----------------------------------|--------------------------------------|----------|--------------------------------------------------|
| Operator                          | KERR-MCGEE OIL & GAS ONSHORE LP (WA) | Slot     | SLOT#33 AZUL 13-16HZ (837'FSL & 2327'FWL,SEC.13) |
| Area                              | COLORADO                             | Well     | AZUL 13-16HZ                                     |
| Field                             | WELD COUNTY (UTM/TRUE NORTH)         | Wellbore | AZUL 13-16HZ AWB                                 |
| Facility                          | SEC.13-T1N-R66W                      |          |                                                  |

| WELLPATH COMMENTS |                    |                |             |                                                                       |
|-------------------|--------------------|----------------|-------------|-----------------------------------------------------------------------|
| MD<br>[ft]        | Inclination<br>[°] | Azimuth<br>[°] | TVD<br>[ft] | Comment                                                               |
| 130.00            | 0.970              | 215.790        | 129.99      | FIRST SURFACE MWD+IFR1 SURVEY                                         |
| 1834.00           | 17.270             | 162.260        | 1793.07     | LAST SURFACE MWD+IFR1 SURVEY                                          |
| 1937.00           | 17.150             | 163.740        | 1891.46     | FIRST BHGE MWD+IFR1+SC SURVEY                                         |
| 6825.00           | 3.963              | 1.532          | 6577.09     | KOP                                                                   |
| 7989.00           | 86.054             | 358.120        | 7337.07     | LANDING (91'FSL & 2420'FEL,SEC.13) 40.0442866 -104.7246858            |
| 8321.00           | 88.953             | 358.482        | 7345.13     | EXIT RADIUS HEEL (423'FSL & 2434'FEL,SEC.13) 40.0451968 -104.7247353  |
| 11454.00          | 90.747             | 359.538        | 7340.05     | ENTER RADIUS TOE (1734'FNL & 2469'FEL,SEC.13) 40.0537944 -104.7248187 |
| 12657.00          | 89.750             | 355.480        | 7328.75     | LAST BHGE MWD+IFR1+SC SURVEY                                          |
| 12704.00          | 89.750             | 355.480        | 7328.95     | PTB (485'FNL & 2498'FEL,SEC.13) 40.0572239 -104.7249243               |