

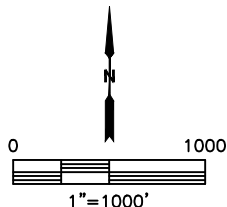
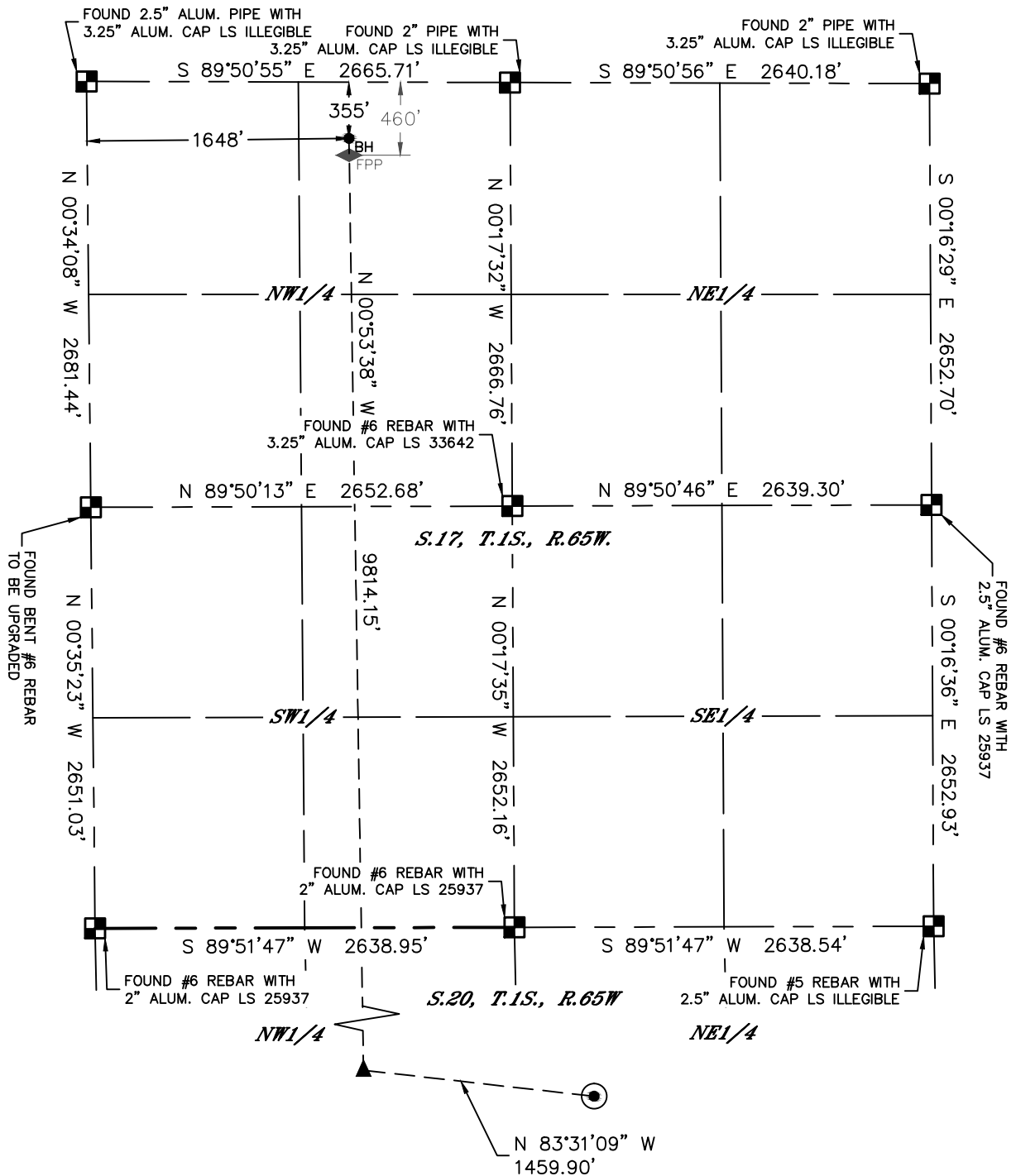


Lat40°, Inc. 6250 W. 10th Street, Unit 2, Greeley, CO 970-515-5294

# WELL LOCATION CERTIFICATE

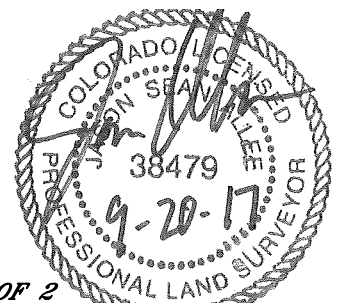
WAKEMAN 20-17-2CDH

SECTION: 20  
TOWNSHIP: 1S  
RANGE: 65W  
6TH. P.M.  
ADAMS COUNTY, CO



## LEGEND

- = ALIQUOT MONUMENT AS DESCRIBED
- = CALCULATED POSITION
- = SURFACE HOLE LOCATION (SHL)
- = ENTRY POINT LOCATION (EP)
- = FIRST PERF. POINT (FPP)
- = BOTTOM HOLE LOCATION (BHL)



**SHEET 2 OF 2**

Jason S. Allee—On behalf of Lat40°, Inc.  
Colorado Licensed Professional Land Surveyor No. 38479  
DATE: 9/20/2017  
PROJECT#: 2017113