

PETROLEUM DEVELOPMENT CORP Weld County CO

Well Name: **Diana 6T-241**

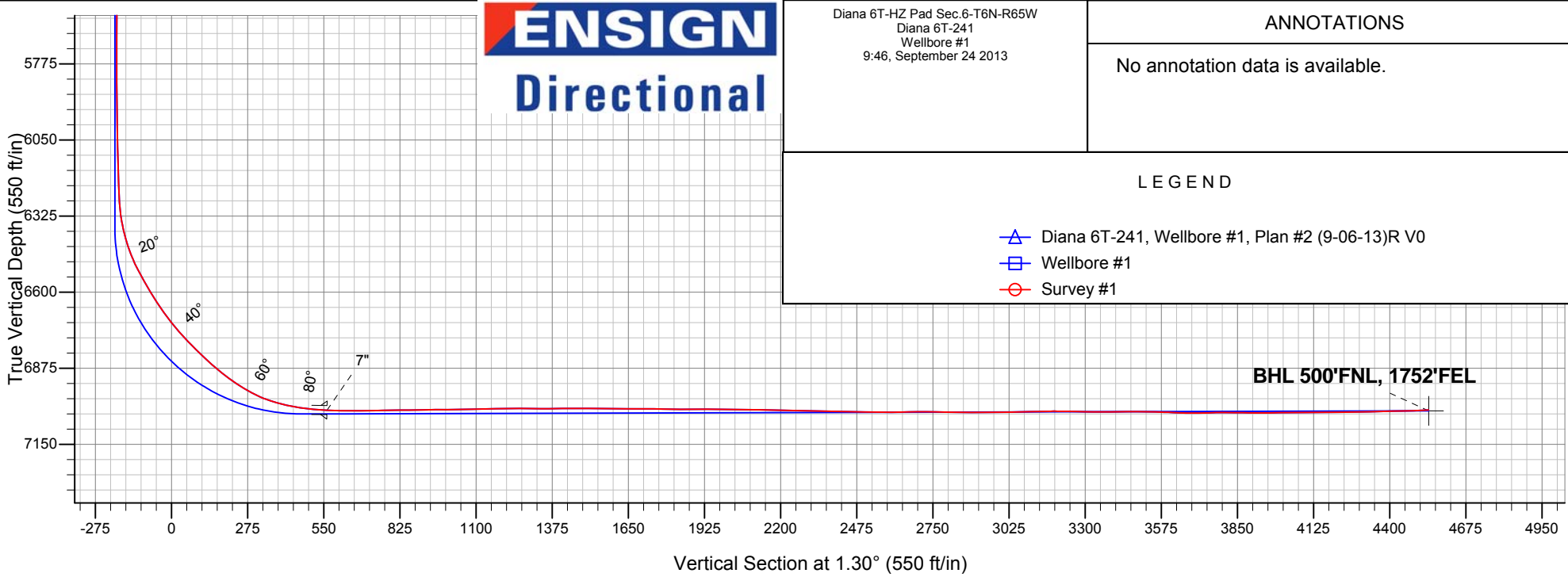
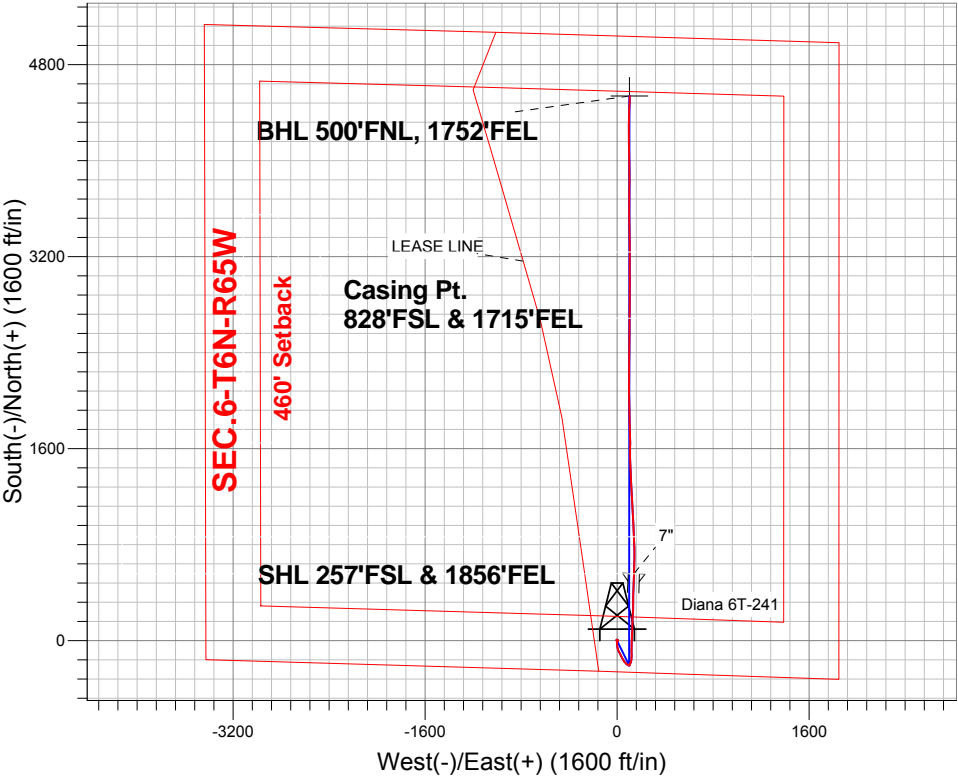
Surface Location: Diana 6T-HZ Pad Sec.6-T6N-R65W
North American Datum 1983 , US State Plane 1983 , Colorado Northern Zone

Ground Elevation: 4795.0

+N/-S	+E/-W	Northing	Easting	Latitude	Longitude	Slot
0.0	0.0	1429835.77	3221460.37	40.510570	-104.703530	
Ensign Rig #14 - RKB - 15' WELL @ 4810.0ft (Ensign Rig #14 - RKB - 15')						

FINAL SURVEY

Projected Bottom Hole Location
11424'MD 7026'TVD 4539'N & 107'E of SHL
92.7 degree Incl @ 2.9 degree AZM



Diana 6T-HZ Pad Sec.6-T6N-R65W
Diana 6T-241
Wellbore #1
9:46, September 24 2013

ANNOTATIONS

No annotation data is available.

LEGEND

- Diana 6T-241, Wellbore #1, Plan #2 (9-06-13)R V0
- Wellbore #1
- Survey #1



PETROLEUM DEVELOPMENT CORP Weld County CO

SEC.6-T6N-R65W

Diana 6T-HZ Pad Sec.6-T6N-R65W

Diana 6T-241

Wellbore #1

Survey: Survey #1

Standard Survey Report

24 September, 2013

Company:	PETROLEUM DEVELOPMENT CORP Weld County CO	Local Co-ordinate Reference:	Well Diana 6T-241
Project:	SEC.6-T6N-R65W	TVD Reference:	WELL @ 4810.0ft (Ensign Rig #14 - RKB - 15')
Site:	Diana 6T-HZ Pad Sec.6-T6N-R65W	MD Reference:	WELL @ 4810.0ft (Ensign Rig #14 - RKB - 15')
Well:	Diana 6T-241	North Reference:	True
Wellbore:	Wellbore #1	Survey Calculation Method:	Minimum Curvature
Design:	Wellbore #1	Database:	Landmark

Project	SEC.6-T6N-R65W, Weld County, Colorado		
Map System:	US State Plane 1983	System Datum:	Mean Sea Level
Geo Datum:	North American Datum 1983		Using Well Reference Point
Map Zone:	Colorado Northern Zone		Using geodetic scale factor

Site	Diana 6T-HZ Pad Sec.6-T6N-R65W				
Site Position:		Northing:	1,429,839.15 ft	Latitude:	40.510580
From:	Lat/Long	Easting:	3,221,429.75 ft	Longitude:	-104.703640
Position Uncertainty:	0.0 ft	Slot Radius:	"	Grid Convergence:	0.51 °

Well	Diana 6T-241					
Well Position	+N-S	0.0 ft	Northing:	1,429,835.77 ft	Latitude:	40.510570
	+E-W	0.0 ft	Easting:	3,221,460.37 ft	Longitude:	-104.703530
Position Uncertainty		0.0 ft	Wellhead Elevation:	ft	Ground Level:	4,795.0 ft

Wellbore	Wellbore #1				
Magnetics	Model Name	Sample Date	Declination (°)	Dip Angle (°)	Field Strength (nT)
	IGRF2010	9/6/2013	8.54	67.07	52,961

Design	Wellbore #1				
Audit Notes:					
Version:	1.0	Phase:	ACTUAL	Tie On Depth:	0.0
Vertical Section:	Depth From (TVD) (ft)	+N/-S (ft)	+E/-W (ft)	Direction (°)	
	0.0	0.0	0.0	1.30	

Survey Program	Date	9/24/2013			
From (ft)	To (ft)	Survey (Wellbore)	Tool Name	Description	
158.0	11,424.0	Survey #1 (Wellbore #1)	MWD	MWD - Standard	

Survey										
Measured Depth (ft)	Inclination (°)	Azimuth (°)	Vertical Depth (ft)	+N/-S (ft)	+E/-W (ft)	Vertical Section (ft)	Dogleg Rate (°/100ft)	Build Rate (°/100ft)	Turn Rate (°/100ft)	
0.0	0.00	0.00	0.0	0.0	0.0	0.0	0.00	0.00	0.00	
158.0	0.40	91.50	158.0	0.0	0.6	0.0	0.25	0.25	0.00	
284.0	1.00	59.50	284.0	0.5	1.9	0.6	0.55	0.48	-25.40	
410.0	0.40	0.10	410.0	1.5	2.9	1.6	0.69	-0.48	-47.14	
537.0	0.40	355.70	537.0	2.4	2.9	2.5	0.02	0.00	-3.46	
663.0	0.30	338.00	663.0	3.2	2.7	3.2	0.12	-0.08	-14.05	
790.0	0.40	6.60	790.0	3.9	2.6	4.0	0.16	0.08	22.52	
900.0	1.10	60.90	900.0	4.8	3.6	4.9	0.84	0.64	49.36	
975.0	1.70	70.20	974.9	5.5	5.3	5.6	0.85	0.80	12.40	
1,068.0	1.40	282.40	1,067.9	6.2	5.5	6.4	3.20	-0.32	-158.93	
1,225.0	2.00	289.40	1,224.9	7.6	1.0	7.6	0.40	0.38	4.46	
1,380.0	2.90	217.40	1,379.7	5.3	-3.9	5.3	1.92	0.58	-46.45	

Company:	PETROLEUM DEVELOPMENT CORP Weld County CO	Local Co-ordinate Reference:	Well Diana 6T-241
Project:	SEC.6-T6N-R65W	TVD Reference:	WELL @ 4810.0ft (Ensign Rig #14 - RKB - 15')
Site:	Diana 6T-HZ Pad Sec.6-T6N-R65W	MD Reference:	WELL @ 4810.0ft (Ensign Rig #14 - RKB - 15')
Well:	Diana 6T-241	North Reference:	True
Wellbore:	Wellbore #1	Survey Calculation Method:	Minimum Curvature
Design:	Wellbore #1	Database:	Landmark

Survey									
Measured Depth (ft)	Inclination (°)	Azimuth (°)	Vertical Depth (ft)	+N/-S (ft)	+E/-W (ft)	Vertical Section (ft)	Dogleg Rate (°/100ft)	Build Rate (°/100ft)	Turn Rate (°/100ft)
1,532.0	1.20	137.20	1,531.7	1.1	-5.2	1.0	1.94	-1.12	-52.76
1,685.0	2.20	142.10	1,684.6	-2.4	-2.3	-2.4	0.66	0.65	3.20
1,837.0	1.80	62.20	1,836.5	-3.6	1.6	-3.5	1.70	-0.26	-52.57
1,990.0	0.50	181.30	1,989.5	-3.1	3.7	-3.0	1.37	-0.85	77.84
2,142.0	0.90	215.60	2,141.5	-4.7	3.0	-4.7	0.37	0.26	22.57
2,300.0	0.90	189.10	2,299.5	-7.0	2.1	-6.9	0.26	0.00	-16.77
2,395.0	1.10	208.80	2,394.5	-8.5	1.5	-8.5	0.42	0.21	20.74
2,553.0	1.30	207.20	2,552.4	-11.4	0.0	-11.4	0.13	0.13	-1.01
2,712.0	0.70	172.90	2,711.4	-14.0	-0.7	-14.0	0.52	-0.38	-21.57
2,870.0	1.10	190.80	2,869.4	-16.4	-0.9	-16.5	0.31	0.25	11.33
2,997.0	2.70	163.80	2,996.3	-20.5	-0.3	-20.5	1.41	1.26	-21.26
3,156.0	4.10	180.80	3,155.0	-29.8	0.7	-29.8	1.08	0.88	10.69
3,314.0	5.60	174.30	3,312.5	-43.1	1.4	-43.1	1.01	0.95	-4.11
3,473.0	6.90	172.20	3,470.5	-60.3	3.4	-60.2	0.83	0.82	-1.32
3,631.0	6.90	158.50	3,627.4	-78.5	8.2	-78.3	1.04	0.00	-8.67
3,790.0	7.60	150.60	3,785.1	-96.6	16.9	-96.2	0.77	0.44	-4.97
3,949.0	9.50	152.70	3,942.3	-117.4	28.0	-116.7	1.21	1.19	1.32
4,107.0	10.10	152.90	4,098.0	-141.3	40.3	-140.4	0.38	0.38	0.13
4,266.0	9.10	149.20	4,254.8	-164.5	53.1	-163.3	0.74	-0.63	-2.33
4,425.0	8.30	138.80	4,412.0	-184.0	67.1	-182.4	1.11	-0.50	-6.54
4,584.0	5.30	122.30	4,569.9	-196.5	80.9	-194.7	2.23	-1.89	-10.38
4,743.0	4.60	125.60	4,728.3	-204.2	92.3	-202.0	0.48	-0.44	2.08
4,901.0	2.30	82.00	4,886.0	-207.4	100.6	-205.1	2.11	-1.46	-27.59
5,060.0	1.80	25.20	5,044.9	-204.7	104.8	-202.3	1.26	-0.31	-35.72
5,219.0	0.70	314.20	5,203.9	-201.8	105.2	-199.3	1.07	-0.69	-44.65
5,377.0	0.60	303.30	5,361.9	-200.7	103.8	-198.2	0.10	-0.06	-6.90
5,537.0	1.20	283.80	5,521.8	-199.8	101.5	-197.4	0.42	0.38	-12.19
5,697.0	0.70	127.20	5,681.8	-200.0	100.6	-197.7	1.16	-0.31	-97.88
5,855.0	0.60	62.70	5,839.8	-200.2	102.1	-197.8	0.44	-0.06	-40.82
6,013.0	1.20	43.20	5,997.8	-198.6	104.0	-196.2	0.42	0.38	-12.34
6,172.0	2.40	45.30	6,156.7	-195.0	107.5	-192.6	0.76	0.75	1.32
6,235.0	2.10	36.30	6,219.7	-193.2	109.1	-190.7	0.73	-0.48	-14.29
6,267.0	2.80	24.40	6,251.6	-192.0	109.8	-189.5	2.69	2.19	-37.19
6,298.0	4.40	18.90	6,282.6	-190.2	110.5	-187.6	5.27	5.16	-17.74
6,330.0	7.60	16.10	6,314.4	-187.0	111.5	-184.4	10.04	10.00	-8.75
6,362.0	10.50	18.20	6,346.0	-182.2	113.0	-179.6	9.12	9.06	6.56
6,393.0	13.40	17.70	6,376.3	-176.1	114.9	-173.4	9.36	9.35	-1.61
6,425.0	16.10	13.30	6,407.3	-168.2	117.1	-165.5	9.13	8.44	-13.75
6,457.0	19.10	8.70	6,437.8	-158.7	118.9	-156.0	10.33	9.38	-14.38
6,489.0	21.70	5.70	6,467.8	-147.7	120.3	-144.9	8.76	8.13	-9.38
6,521.0	25.10	2.40	6,497.1	-135.0	121.2	-132.2	11.38	10.63	-10.31
6,552.0	27.80	358.70	6,524.9	-121.2	121.3	-118.4	10.20	8.71	-11.94
6,584.0	29.70	358.90	6,552.9	-105.8	120.9	-103.0	5.95	5.94	0.63
6,616.0	30.20	359.20	6,580.7	-89.8	120.7	-87.1	1.63	1.56	0.94
6,648.0	31.60	0.60	6,608.1	-73.4	120.7	-70.7	4.92	4.38	4.38
6,680.0	32.40	0.50	6,635.3	-56.4	120.8	-53.7	2.51	2.50	-0.31
6,711.0	34.70	1.30	6,661.1	-39.3	121.1	-36.6	7.56	7.42	2.58
6,743.0	36.20	2.60	6,687.2	-20.8	121.7	-18.0	5.25	4.69	4.06
6,775.0	39.30	3.40	6,712.5	-1.2	122.8	1.6	9.81	9.69	2.50
6,807.0	40.60	1.90	6,737.0	19.3	123.7	22.1	5.06	4.06	-4.69
6,838.0	42.80	1.30	6,760.1	39.9	124.3	42.7	7.21	7.10	-1.94
6,870.0	43.90	1.30	6,783.4	61.9	124.8	64.7	3.44	3.44	0.00
6,902.0	45.00	1.70	6,806.2	84.3	125.4	87.1	3.55	3.44	1.25

Company:	PETROLEUM DEVELOPMENT CORP Weld County CO	Local Co-ordinate Reference:	Well Diana 6T-241
Project:	SEC.6-T6N-R65W	TVD Reference:	WELL @ 4810.0ft (Ensign Rig #14 - RKB - 15')
Site:	Diana 6T-HZ Pad Sec.6-T6N-R65W	MD Reference:	WELL @ 4810.0ft (Ensign Rig #14 - RKB - 15')
Well:	Diana 6T-241	North Reference:	True
Wellbore:	Wellbore #1	Survey Calculation Method:	Minimum Curvature
Design:	Wellbore #1	Database:	Landmark

Survey									
Measured Depth (ft)	Inclination (°)	Azimuth (°)	Vertical Depth (ft)	+N/-S (ft)	+E/-W (ft)	Vertical Section (ft)	Dogleg Rate (°/100ft)	Build Rate (°/100ft)	Turn Rate (°/100ft)
6,934.0	46.70	2.40	6,828.5	107.2	126.2	110.1	5.54	5.31	2.19
6,966.0	48.50	2.20	6,850.1	130.8	127.1	133.7	5.64	5.63	-0.63
6,997.0	47.50	2.40	6,870.9	153.9	128.1	156.7	3.26	-3.23	0.65
7,029.0	51.70	2.90	6,891.6	178.2	129.2	181.1	13.18	13.13	1.56
7,061.0	53.70	3.10	6,911.0	203.6	130.5	206.5	6.27	6.25	0.63
7,093.0	56.50	2.90	6,929.3	229.8	131.9	232.8	8.77	8.75	-0.63
7,125.0	58.50	1.70	6,946.5	256.8	133.0	259.7	7.00	6.25	-3.75
7,157.0	61.40	1.70	6,962.5	284.5	133.8	287.4	9.06	9.06	0.00
7,189.0	65.20	1.00	6,976.9	313.0	134.5	316.0	12.03	11.88	-2.19
7,220.0	70.00	0.60	6,988.7	341.7	134.9	344.7	15.53	15.48	-1.29
7,252.0	74.60	0.50	6,998.4	372.2	135.2	375.1	14.38	14.38	-0.31
7,284.0	77.30	1.20	7,006.2	403.2	135.6	406.2	8.70	8.44	2.19
7,316.0	79.00	1.30	7,012.8	434.5	136.3	437.5	5.32	5.31	0.31
7,347.0	80.50	2.00	7,018.3	465.0	137.2	468.0	5.32	4.84	2.26
7,379.0	83.40	2.20	7,022.8	496.7	138.3	499.7	9.08	9.06	0.63
7,403.0	85.80	2.40	7,025.0	520.5	139.3	523.6	10.03	10.00	0.83
7,441.0	88.33	2.40	7,027.0	558.5	140.9	561.5	6.67	6.67	0.00
7"									
7,451.0	89.00	2.40	7,027.2	568.4	141.3	571.5	6.67	6.67	0.00
7,454.0	88.60	2.50	7,027.3	571.4	141.4	574.5	13.74	-13.33	3.33
7,485.0	88.90	2.60	7,027.9	602.4	142.8	605.5	1.02	0.97	0.32
7,516.0	89.10	1.50	7,028.5	633.4	143.9	636.5	3.61	0.65	-3.55
7,548.0	89.80	1.20	7,028.8	665.4	144.7	668.5	2.38	2.19	-0.94
7,580.0	90.60	0.30	7,028.7	697.4	145.1	700.5	3.76	2.50	-2.81
7,612.0	91.50	359.60	7,028.1	729.4	145.1	732.5	3.56	2.81	-2.19
7,644.0	90.90	358.50	7,027.4	761.3	144.5	764.4	3.91	-1.88	-3.44
7,675.0	90.70	357.10	7,027.0	792.3	143.3	795.4	4.56	-0.65	-4.52
7,707.0	90.70	357.30	7,026.6	824.3	141.8	827.3	0.62	0.00	0.63
7,739.0	90.80	357.50	7,026.2	856.2	140.3	859.2	0.70	0.31	0.63
7,770.0	91.00	357.60	7,025.7	887.2	139.0	890.1	0.72	0.65	0.32
7,802.0	91.20	357.50	7,025.1	919.2	137.6	922.1	0.70	0.63	-0.31
7,833.0	90.60	357.50	7,024.6	950.1	136.3	953.0	1.94	-1.94	0.00
7,865.0	90.00	356.80	7,024.4	982.1	134.7	984.9	2.88	-1.88	-2.19
7,896.0	89.80	356.60	7,024.5	1,013.0	132.9	1,015.8	0.91	-0.65	-0.65
7,928.0	90.50	356.20	7,024.4	1,045.0	130.9	1,047.7	2.52	2.19	-1.25
7,960.0	91.30	356.40	7,023.9	1,076.9	128.8	1,079.6	2.58	2.50	0.63
7,992.0	91.70	356.90	7,023.0	1,108.8	127.0	1,111.4	2.00	1.25	1.56
8,023.0	91.70	357.80	7,022.1	1,139.8	125.5	1,142.4	2.90	0.00	2.90
8,055.0	91.50	358.20	7,021.2	1,171.8	124.4	1,174.3	1.40	-0.63	1.25
8,087.0	90.70	358.00	7,020.6	1,203.7	123.4	1,206.2	2.58	-2.50	-0.63
8,118.0	90.10	357.30	7,020.4	1,234.7	122.1	1,237.2	2.97	-1.94	-2.26
8,150.0	89.60	356.80	7,020.5	1,266.7	120.4	1,269.1	2.21	-1.56	-1.56
8,182.0	89.20	356.60	7,020.8	1,298.6	118.6	1,301.0	1.40	-1.25	-0.63
8,214.0	89.30	356.40	7,021.2	1,330.6	116.6	1,332.9	0.70	0.31	-0.63
8,245.0	90.00	356.60	7,021.4	1,361.5	114.7	1,363.8	2.35	2.26	0.65
8,277.0	90.80	356.60	7,021.2	1,393.4	112.9	1,395.6	2.50	2.50	0.00
8,308.0	91.20	357.10	7,020.7	1,424.4	111.1	1,426.5	2.07	1.29	1.61
8,340.0	90.70	357.60	7,020.1	1,456.4	109.7	1,458.5	2.21	-1.56	1.56
8,372.0	90.10	358.30	7,019.9	1,488.3	108.5	1,490.4	2.88	-1.88	2.19
8,403.0	89.30	358.90	7,020.1	1,519.3	107.8	1,521.4	3.23	-2.58	1.94
8,435.0	88.70	0.30	7,020.6	1,551.3	107.5	1,553.4	4.76	-1.88	4.38
8,467.0	88.70	0.60	7,021.4	1,583.3	107.8	1,585.3	0.94	0.00	0.94
8,498.0	89.50	0.80	7,021.8	1,614.3	108.2	1,616.3	2.66	2.58	0.65

Company:	PETROLEUM DEVELOPMENT CORP Weld County CO	Local Co-ordinate Reference:	Well Diana 6T-241
Project:	SEC.6-T6N-R65W	TVD Reference:	WELL @ 4810.0ft (Ensign Rig #14 - RKB - 15')
Site:	Diana 6T-HZ Pad Sec.6-T6N-R65W	MD Reference:	WELL @ 4810.0ft (Ensign Rig #14 - RKB - 15')
Well:	Diana 6T-241	North Reference:	True
Wellbore:	Wellbore #1	Survey Calculation Method:	Minimum Curvature
Design:	Wellbore #1	Database:	Landmark

Survey									
Measured Depth (ft)	Inclination (°)	Azimuth (°)	Vertical Depth (ft)	+N/-S (ft)	+E/-W (ft)	Vertical Section (ft)	Dogleg Rate (°/100ft)	Build Rate (°/100ft)	Turn Rate (°/100ft)
8,530.0	90.30	0.50	7,021.9	1,646.3	108.5	1,648.3	2.67	2.50	-0.94
8,562.0	90.30	359.40	7,021.7	1,678.3	108.5	1,680.3	3.44	0.00	-3.44
8,594.0	89.60	358.70	7,021.8	1,710.3	108.0	1,712.3	3.09	-2.19	-2.19
8,625.0	89.10	358.00	7,022.1	1,741.3	107.1	1,743.3	2.77	-1.61	-2.26
8,657.0	88.90	358.00	7,022.7	1,773.3	106.0	1,775.2	0.63	-0.63	0.00
8,689.0	89.30	357.80	7,023.2	1,805.2	104.8	1,807.1	1.40	1.25	-0.63
8,720.0	89.60	357.60	7,023.5	1,836.2	103.6	1,838.1	1.16	0.97	-0.65
8,752.0	89.40	358.20	7,023.7	1,868.2	102.4	1,870.0	1.98	-0.63	1.88
8,784.0	89.50	358.30	7,024.1	1,900.2	101.4	1,902.0	0.44	0.31	0.31
8,816.0	90.00	358.90	7,024.2	1,932.1	100.6	1,933.9	2.44	1.56	1.88
8,847.0	90.40	359.80	7,024.1	1,963.1	100.3	1,964.9	3.18	1.29	2.90
8,879.0	91.00	359.80	7,023.7	1,995.1	100.2	1,996.9	1.88	1.88	0.00
8,911.0	89.60	0.30	7,023.5	2,027.1	100.2	2,028.9	4.65	-4.38	1.56
8,942.0	88.60	359.90	7,024.0	2,058.1	100.2	2,059.9	3.47	-3.23	-1.29
8,974.0	88.10	359.80	7,024.9	2,090.1	100.2	2,091.9	1.59	-1.56	-0.31
9,006.0	88.60	359.90	7,025.9	2,122.1	100.1	2,123.8	1.59	1.56	0.31
9,038.0	89.40	0.10	7,026.4	2,154.1	100.1	2,155.8	2.58	2.50	0.63
9,070.0	89.40	359.80	7,026.7	2,186.1	100.0	2,187.8	0.94	0.00	-0.94
9,101.0	89.20	359.90	7,027.1	2,217.1	100.0	2,218.8	0.72	-0.65	0.32
9,133.0	88.90	359.90	7,027.7	2,249.1	99.9	2,250.8	0.94	-0.94	0.00
9,165.0	88.80	359.90	7,028.3	2,281.1	99.9	2,282.8	0.31	-0.31	0.00
9,197.0	88.50	0.10	7,029.1	2,313.1	99.9	2,314.8	1.13	-0.94	0.63
9,228.0	88.60	0.60	7,029.8	2,344.1	100.0	2,345.7	1.64	0.32	1.61
9,260.0	88.50	1.00	7,030.6	2,376.1	100.5	2,377.7	1.29	-0.31	1.25
9,292.0	88.60	0.60	7,031.5	2,408.0	100.9	2,409.7	1.29	0.31	-1.25
9,324.0	88.60	0.80	7,032.2	2,440.0	101.3	2,441.7	0.62	0.00	0.63
9,355.0	89.20	0.80	7,032.8	2,471.0	101.8	2,472.7	1.94	1.94	0.00
9,387.0	89.00	0.50	7,033.3	2,503.0	102.1	2,504.7	1.13	-0.63	-0.94
9,419.0	89.10	0.60	7,033.9	2,535.0	102.4	2,536.7	0.44	0.31	0.31
9,451.0	90.10	0.80	7,034.1	2,567.0	102.8	2,568.7	3.19	3.13	0.63
9,483.0	90.60	1.00	7,033.9	2,599.0	103.3	2,600.7	1.68	1.56	0.63
9,514.0	90.70	0.80	7,033.5	2,630.0	103.8	2,631.7	0.72	0.32	-0.65
9,546.0	90.80	0.30	7,033.1	2,662.0	104.1	2,663.7	1.59	0.31	-1.56
9,578.0	90.60	0.50	7,032.7	2,694.0	104.3	2,695.7	0.88	-0.63	0.63
9,609.0	89.90	0.50	7,032.6	2,725.0	104.6	2,726.7	2.26	-2.26	0.00
9,641.0	89.40	0.50	7,032.8	2,757.0	104.9	2,758.7	1.56	-1.56	0.00
9,673.0	88.70	0.50	7,033.3	2,789.0	105.2	2,790.6	2.19	-2.19	0.00
9,705.0	88.90	0.50	7,034.0	2,821.0	105.4	2,822.6	0.63	0.63	0.00
9,737.0	89.10	359.90	7,034.6	2,853.0	105.6	2,854.6	1.98	0.63	-1.88
9,768.0	89.80	0.30	7,034.8	2,884.0	105.6	2,885.6	2.60	2.26	1.29
9,800.0	90.60	0.10	7,034.7	2,916.0	105.7	2,917.6	2.58	2.50	-0.63
9,832.0	90.60	359.80	7,034.4	2,948.0	105.7	2,949.6	0.94	0.00	-0.94
9,864.0	90.60	359.80	7,034.1	2,980.0	105.6	2,981.6	0.00	0.00	0.00
9,896.0	90.20	359.90	7,033.8	3,012.0	105.5	3,013.6	1.29	-1.25	0.31
9,927.0	90.80	359.60	7,033.6	3,043.0	105.4	3,044.6	2.16	1.94	-0.97
9,959.0	91.50	359.40	7,032.9	3,075.0	105.1	3,076.5	2.28	2.19	-0.63
9,991.0	91.80	359.90	7,032.0	3,106.9	104.9	3,108.5	1.82	0.94	1.56
10,022.0	91.20	0.60	7,031.2	3,137.9	105.0	3,139.5	2.97	-1.94	2.26
10,054.0	90.70	1.00	7,030.7	3,169.9	105.5	3,171.5	2.00	-1.56	1.25
10,086.0	89.70	0.50	7,030.6	3,201.9	105.9	3,203.5	3.49	-3.13	-1.56
10,117.0	89.00	359.90	7,030.9	3,232.9	106.0	3,234.5	2.97	-2.26	-1.94
10,149.0	88.40	359.90	7,031.6	3,264.9	105.9	3,266.5	1.88	-1.88	0.00
10,181.0	88.80	359.20	7,032.4	3,296.9	105.7	3,298.4	2.52	1.25	-2.19

Company:	PETROLEUM DEVELOPMENT CORP Weld County CO	Local Co-ordinate Reference:	Well Diana 6T-241
Project:	SEC.6-T6N-R65W	TVD Reference:	WELL @ 4810.0ft (Ensign Rig #14 - RKB - 15')
Site:	Diana 6T-HZ Pad Sec.6-T6N-R65W	MD Reference:	WELL @ 4810.0ft (Ensign Rig #14 - RKB - 15')
Well:	Diana 6T-241	North Reference:	True
Wellbore:	Wellbore #1	Survey Calculation Method:	Minimum Curvature
Design:	Wellbore #1	Database:	Landmark

Survey									
Measured Depth (ft)	Inclination (°)	Azimuth (°)	Vertical Depth (ft)	+N/-S (ft)	+E/-W (ft)	Vertical Section (ft)	Dogleg Rate (°/100ft)	Build Rate (°/100ft)	Turn Rate (°/100ft)
10,213.0	89.10	358.70	7,033.0	3,328.9	105.1	3,330.4	1.82	0.94	-1.56
10,244.0	89.80	358.20	7,033.3	3,359.9	104.3	3,361.4	2.77	2.26	-1.61
10,276.0	90.70	358.30	7,033.2	3,391.9	103.3	3,393.3	2.83	2.81	0.31
10,308.0	91.10	358.70	7,032.7	3,423.8	102.5	3,425.3	1.77	1.25	1.25
10,339.0	90.70	359.20	7,032.2	3,454.8	101.9	3,456.3	2.07	-1.29	1.61
10,371.0	89.90	358.70	7,032.0	3,486.8	101.3	3,488.2	2.95	-2.50	-1.56
10,403.0	89.10	359.60	7,032.3	3,518.8	100.8	3,520.2	3.76	-2.50	2.81
10,435.0	88.30	0.30	7,033.0	3,550.8	100.8	3,552.2	3.32	-2.50	2.19
10,467.0	88.50	0.30	7,033.9	3,582.8	101.0	3,584.2	0.63	0.63	0.00
10,498.0	87.40	0.10	7,035.0	3,613.8	101.1	3,615.1	3.61	-3.55	-0.65
10,530.0	88.00	0.30	7,036.3	3,645.7	101.2	3,647.1	1.98	1.88	0.63
10,562.0	89.70	359.90	7,036.9	3,677.7	101.2	3,679.1	5.46	5.31	-1.25
10,594.0	90.90	359.90	7,036.8	3,709.7	101.2	3,711.1	3.75	3.75	0.00
10,625.0	91.60	0.50	7,036.1	3,740.7	101.3	3,742.1	2.97	2.26	1.94
10,657.0	90.60	0.50	7,035.5	3,772.7	101.6	3,774.1	3.13	-3.13	0.00
10,689.0	90.00	0.30	7,035.3	3,804.7	101.8	3,806.1	1.98	-1.88	-0.63
10,721.0	89.20	0.30	7,035.5	3,836.7	102.0	3,838.0	2.50	-2.50	0.00
10,753.0	89.40	0.10	7,035.9	3,868.7	102.1	3,870.0	0.88	0.63	-0.63
10,785.0	89.50	359.60	7,036.2	3,900.7	102.0	3,902.0	1.59	0.31	-1.56
10,817.0	90.00	359.80	7,036.4	3,932.7	101.8	3,934.0	1.68	1.56	0.63
10,849.0	90.70	359.80	7,036.2	3,964.7	101.7	3,966.0	2.19	2.19	0.00
10,880.0	90.80	359.40	7,035.8	3,995.7	101.5	3,997.0	1.33	0.32	-1.29
10,912.0	90.70	358.90	7,035.4	4,027.7	101.0	4,029.0	1.59	-0.31	-1.56
10,944.0	90.50	359.00	7,035.0	4,059.7	100.4	4,060.9	0.70	-0.63	0.31
10,975.0	90.00	359.20	7,034.9	4,090.7	99.9	4,091.9	1.74	-1.61	0.65
11,007.0	90.20	359.20	7,034.8	4,122.7	99.5	4,123.9	0.63	0.63	0.00
11,039.0	90.00	359.20	7,034.8	4,154.7	99.1	4,155.9	0.63	-0.63	0.00
11,070.0	90.70	359.00	7,034.6	4,185.7	98.6	4,186.8	2.35	2.26	-0.65
11,102.0	90.40	358.90	7,034.3	4,217.7	98.0	4,218.8	0.99	-0.94	-0.31
11,134.0	90.90	358.90	7,033.9	4,249.7	97.4	4,250.8	1.56	1.56	0.00
11,166.0	91.50	0.10	7,033.2	4,281.7	97.1	4,282.8	4.19	1.88	3.75
11,197.0	91.90	0.50	7,032.3	4,312.6	97.2	4,313.7	1.82	1.29	1.29
11,230.0	91.40	1.70	7,031.4	4,345.6	97.9	4,346.7	3.94	-1.52	3.64
11,261.0	90.60	1.90	7,030.8	4,376.6	98.9	4,377.7	2.66	-2.58	0.65
11,293.0	90.70	2.50	7,030.5	4,408.6	100.1	4,409.7	1.90	0.31	1.88
11,325.0	91.30	2.70	7,029.9	4,440.5	101.5	4,441.7	1.98	1.88	0.63
11,369.0	92.70	2.90	7,028.4	4,484.5	103.7	4,485.7	3.21	3.18	0.45
11,423.8	92.70	2.90	7,025.8	4,539.1	106.5	4,540.4	0.00	0.00	0.00
BHL 500'FNL, 1756'FEL									
11,424.0	92.70	2.90	7,025.8	4,539.3	106.5	4,540.6	0.00	0.00	0.00

Casing Points				
Measured Depth (ft)	Vertical Depth (ft)	Name	Casing Diameter (")	Hole Diameter (")
7,441.0	7,027.0	7"	7	7-1/2

Checked By: _____ Approved By: _____ Date: _____