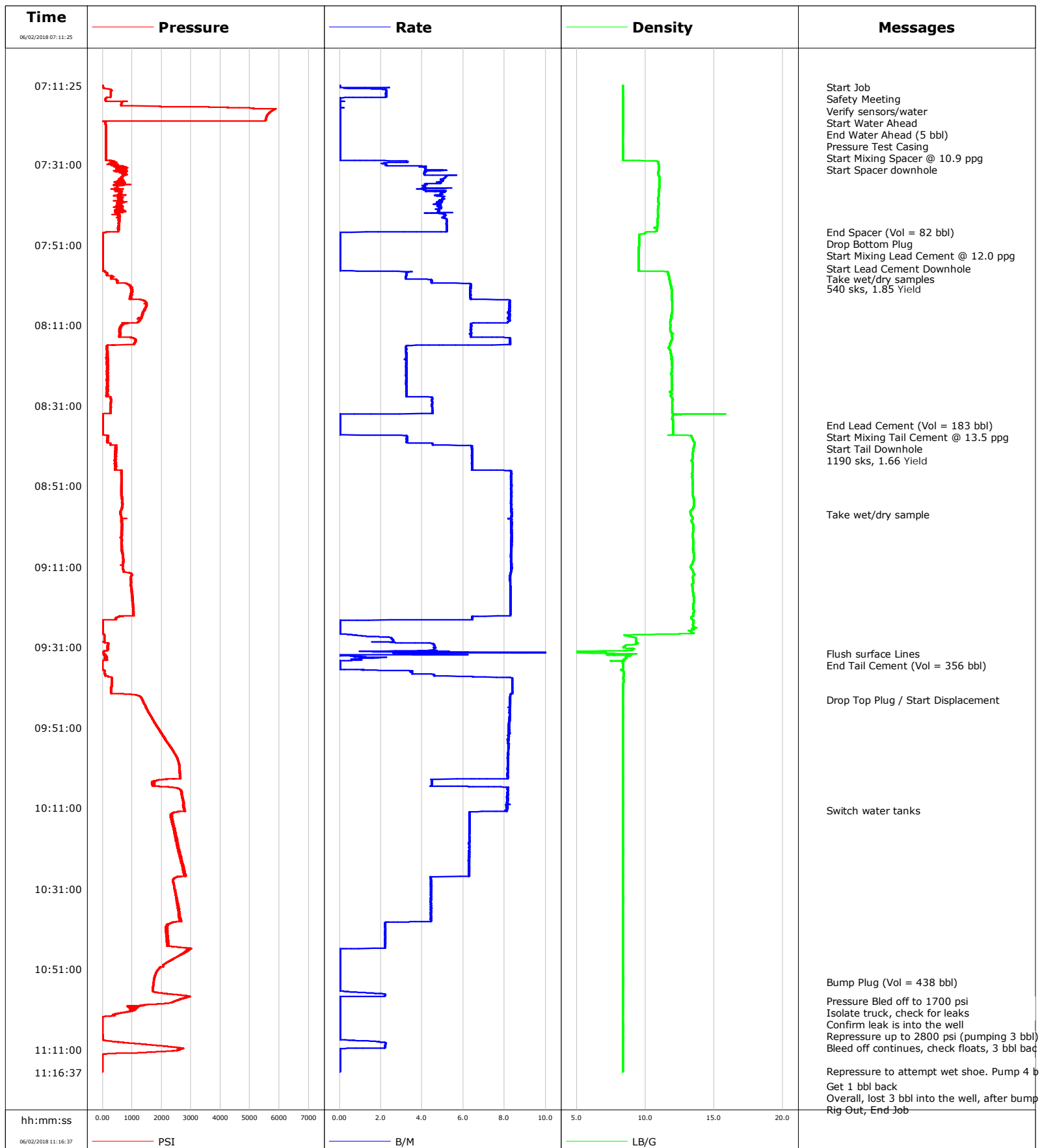


Well	Verde 13-7HZ	Client	Anadarko
Field	Wattenberg	SIR No.	DZOZ-00137
Engineer	Cameron McNutt	Job Type	5.5" Production
Country	United States	Job Date	06-02-2018



Cementing Service Report

				Customer Anadarko			Job Number DZOZ-00137		
Well Verde 13-7HZ			Location (legal)		Schlumberger Location Cheyenne			Job Start Jun/02/2018	
Field Wattenberg		Formation Name/Type		Deviation 90 deg		Bit Size 7.9 in		Well MD 18843.0 ft	
County		State/Province CO		BHP psi		BHST 233 degF		BHCT 230 degF	
Well Master 0631752631		API/UWI						Pore Press. Gradient lb/gal	
Rig Name Precision 564		Drilled For Oil & Gas		Service Via Land		Casing/ Liner			
						Depth, ft		Size, in	
						Weight, lb/ft		Grade	
Offshore Zone		Well Class New		Well Type Development		1885.0		9.6	
						18843.0		5.5	
Drilling Fluid Type OBM		Max. Density 11.30 lb/gal		Plastic Viscosity 70.000 cP		Tubing/Drill Pipe			
						T/D		Depth, ft	
						Size, in		Weight, lb/ft	
Service Line Cementing		Job Type 5.5" Production						Grade	
Max. Allowed Tub. Press psi		Max. Allowed Ann. Press psi		WH Connection Double Cement head		Perforations/Open Hole			
						Top, ft		Bottom, ft	
						shot/ft		No. of Shots	
								Total Interval ft	
						ft		ft	
						ft		ft	
						Treat Down Casing		Displacement 437.9 bbl	
						Packer Type NA		Packer Depth ft	
						Tubing Vol. bbl		Casing Vol. 439.0 bbl	
						Annular Vol. 612.3 bbl		Openhole Vol. bbl	
Casing/Tubing Secured <input checked="" type="checkbox"/>		1 Hole Vol. Circulated prior to Cement <input checked="" type="checkbox"/>				Casing Tools		Squeeze Job	
Lift Pressure psi						Shoe Type Float		Squeeze Type	
Pipe Rotated <input type="checkbox"/>		Pipe Reciprocated <input type="checkbox"/>				Shoe Depth 18843.0 ft		Tool Type	
No. Centralizers		Top Plugs 1		Bottom Plugs 1		Stage Tool Type NA		Tool Depth ft	
Cement Head Type Double						Stage Tool Depth ft		Tail Pipe Size in	
Job Scheduled For Jun/02/2018 02:45		Arrived on Location Jun/02/2018 02:45		Leave Location Jun/02/2018 13:00		Collar Type Float		Tail Pipe Depth ft	
						Collar Depth 18834.0 ft		Sqz. Total Vol. bbl	
Date	Time 24-hr clock	Treating Pressure PSI	Flow Rate B/M	Density LB/G	Volume BBL	Message			
06/02/2018	07:11:25	3	0.0	8.37	0.0	Started Acquisition			
06/02/2018	07:11:50	3	0.0	8.37	0.0	Start Job			
06/02/2018	07:11:55	3	0.0	8.37	0.0	Safety Meeting			
06/02/2018	07:12:01	36	2.4	8.37	0.1	Verify sensors/water			
06/02/2018	07:12:05	47	1.1	8.37	0.2	Start Water Ahead			
06/02/2018	07:15:30	679	0.0	8.37	5.2	End Water Ahead (5 bbl)			
06/02/2018	07:19:07	5562	0.0	8.37	5.2	Pressure Test Casing			
06/02/2018	07:22:19	112	0.0	8.37	5.2	Start Mixing Spacer @ 10.9 ppg			
06/02/2018	07:29:43	111	0.0	8.36	5.2	Start Spacer downhole			
06/02/2018	07:47:48	371	4.9	10.64	87.3	End Spacer (Vol = 82 bbl)			
06/02/2018	07:49:59	3	0.0	9.54	87.6	Drop Bottom Plug			
06/02/2018	07:50:07	4	0.0	9.54	87.6	Start Mixing Lead Cement @ 12.0 ppg			
06/02/2018	07:57:00	1	0.0	9.52	87.6	Start Lead Cement Downhole			
06/02/2018	07:59:23	287	3.2	11.73	93.3	Take wet/dry samples			
06/02/2018	08:33:20	-0	0.0	12.22	271.1	End Lead Cement (Vol = 183 bbl)			
06/02/2018	08:33:30	1	0.0	12.01	271.1	Start Mixing Tail Cement @ 13.5 ppg			
06/02/2018	08:38:00	3	0.0	12.03	271.1	Start Tail Downhole			
06/02/2018	08:49:34	657	8.3	13.43	340.7	Take wet/dry sample			
06/02/2018	09:24:17	8	2.5	13.45	627.1	Flush surface Lines			
06/02/2018	09:24:21	10	0.3	13.51	627.2	End Tail Cement (Vol = 356 bbl)			
06/02/2018	09:35:45	-4	0.0	8.38	646.7	Drop Top Plug / Start Displacement			

Well			Field		Job Start		Customer		Job Number	
Verde 13-7HZ			Wattenberg		Jun/02/2018		Anadarko		DZOZ-00137	
Date	Time 24-hr clock	Treating Pressure PSI	Flow Rate B/M	Density LB/G	Volume BBL	Message				
06/02/2018	10:45:50	2977	2.2	8.37	1086.8	Bump Plug (Vol = 438 bbl)				
06/02/2018	10:50:30	1974	0.0	8.37	1087.0	Pressure Bled off to 1700 psi				
06/02/2018	10:50:31	1964	0.0	8.37	1087.0	Isolate truck, check for leaks				
06/02/2018	10:51:00	1902	0.0	8.37	1087.0	Confirm leak is into the well				
06/02/2018	10:57:00	2003	1.5	8.37	1087.4	Repressure up to 2800 psi (pumping 3 bbl)				
06/02/2018	11:01:00	940	0.0	8.37	1089.1	Bleed off continues, check floats, 3 bbl back				
06/02/2018	11:08:00	0	0.0	8.37	1089.1	Repressure to attempt wet shoe. Pump 4 bbl				
06/02/2018	11:11:39	1669	0.0	8.37	1093.2	Get 1 bbl back				

Post Job Summary

Average Pump Rates, bbl/min					Volume of Fluid Injected, bbl							
Slurry 6.0	N2	Mud	Maximum Rate 16.8	Total Slurry 539.0	Mud 0.0	Spacer 82.0	N2					
Treating Pressure Summary, psi					Breakdown Fluid							
Maximum 5875	Final -3	Average 1162	Bump Plug to 3000	Breakdown	Type	Volume bbl	Density lb/gal					
Avg. N2 Percent %	Designed Slurry Volume 529.8 bbl	Displacement 438.0 bbl	Mix Water Temp 60 degF	Cement Circulated to Surface? <input type="checkbox"/>		Volume bbl						
				Washed Thru Perfs <input type="checkbox"/>		To ft						
Customer or Authorized Representative			Schlumberger Supervisor Cameron McNutt			Circulation Lost <input type="checkbox"/>	Job Completed <input checked="" type="checkbox"/>					
						-	-					