

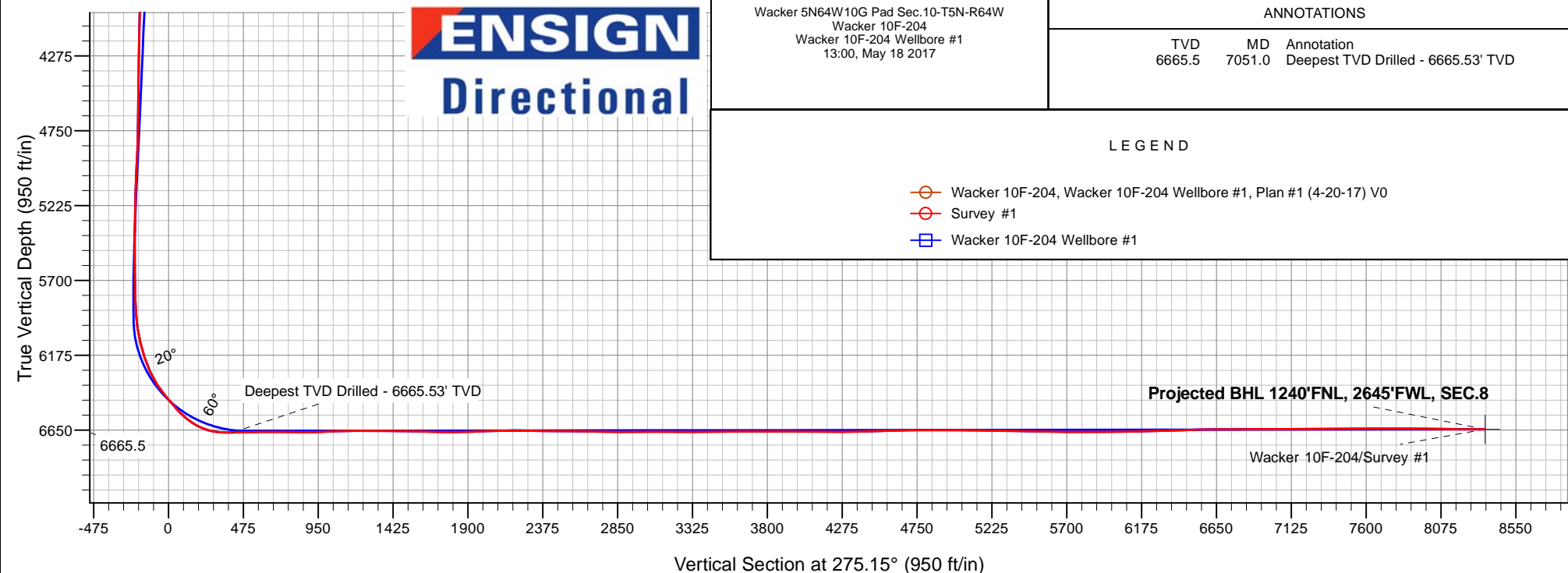
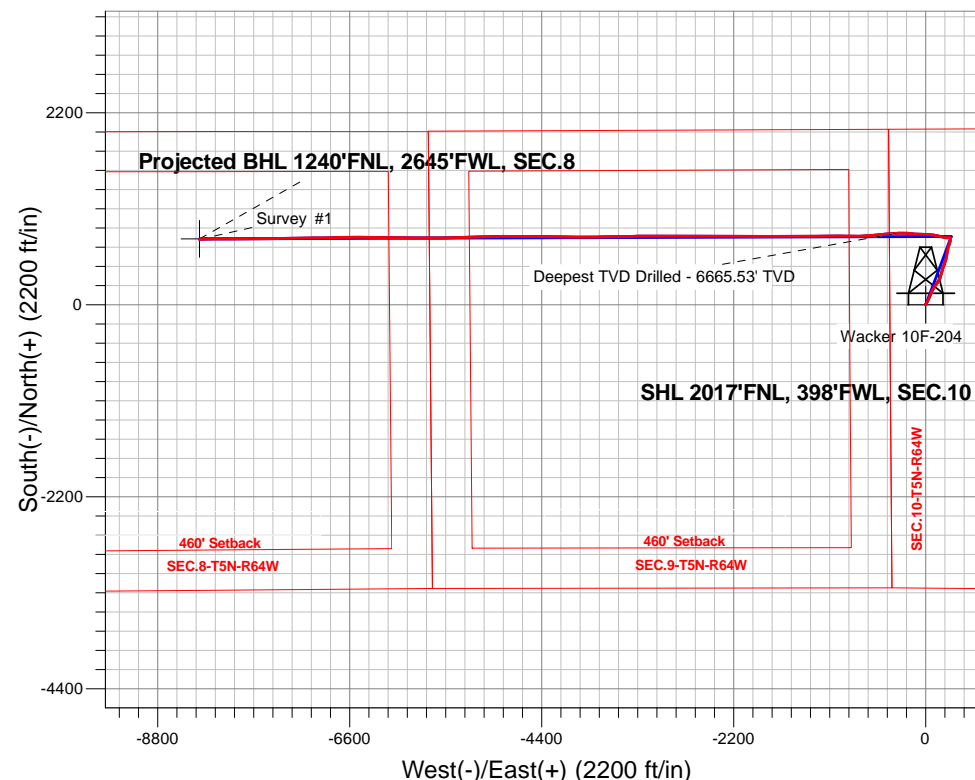
PDC Energy Inc. DJ Basin

Well Name: **Wacker 10F-204**

Surface Location: Wacker 5N64W10G Pad Sec.10-T5N-R64W
 North American Datum 1983 , US State Plane 1983, Colorado Northern Zone
 Ground Elevation: 4611.0
 +N/-S+E/-W Northing Easting Latitude Longitude Slot
 0.0 0.0 1395629.523266124.01 40.415468 -104.544237
 Ensign Rig #152 RKB-23' WELL @ 4634.0ft (Ensign Rig #152 RKB-23')

FINAL SURVEY

Projected Bottom Hole Location
15,040'MD 6644'TVD 750'N & 8321'W of SHL
89.7 degree Incl @ 267.9 degree AZM





PDC Energy Inc. DJ Basin

Sec.10-T5N-R64W

Wacker 5N64W10G Pad Sec.10-T5N-R64W

Wacker 10F-204

Wacker 10F-204 Wellbore #1

Survey: Survey #1

Standard Survey Report

18 May, 2017

Company:	PDC Energy Inc. DJ Basin	Local Co-ordinate Reference:	Well Wacker 10F-204
Project:	Sec.10-T5N-R64W	TVD Reference:	WELL @ 4634.0ft (Ensign Rig #152 RKB-23')
Site:	Wacker 5N64W10G Pad Sec.10-T5N-R64W	MD Reference:	WELL @ 4634.0ft (Ensign Rig #152 RKB-23')
Well:	Wacker 10F-204	North Reference:	True
Wellbore:	Wacker 10F-204 Wellbore #1	Survey Calculation Method:	Minimum Curvature
Design:	Wacker 10F-204 Wellbore #1	Database:	US_EDM

Project	Sec.10-T5N-R64W, Weld County, Colorado		
Map System:	US State Plane 1983	System Datum:	Mean Sea Level
Geo Datum:	North American Datum 1983		Using Well Reference Point
Map Zone:	Colorado Northern Zone		Using geodetic scale factor

Site		Wacker 5N64W10G Pad Sec.10-T5N-R64W			
Site Position:		Northing:	1,395,629.54 usft	Latitude:	40.415468
From:	Lat/Long	Easting:	3,266,124.01 usft	Longitude:	-104.544237
Position Uncertainty:	0.0 ft	Slot Radius:	13-3/16 "	Grid Convergence:	0.62 °

Well	Wacker 10F-204					
Well Position	+N/-S	0.0 ft	Northing:	1,395,629.52 usft	Latitude:	40.415468
	+E/-W	0.0 ft	Easting:	3,266,124.01 usft	Longitude:	-104.544237
Position Uncertainty		0.0 ft	Wellhead Elevation:	0.0 ft	Ground Level:	4,611.0 ft

Wellbore	Wacker 10F-204 Wellbore #1				
Magnetics	Model Name	Sample Date	Declination (°)	Dip Angle (°)	Field Strength (nT)
	IGRF2010	5/5/2017	7.95	66.89	52,543

Design	Wacker 10F-204 Wellbore #1				
Audit Notes:					
Version:	1.0	Phase:	ACTUAL	Tie On Depth:	0.0
Vertical Section:	Depth From (TVD) (ft)	+N/-S (ft)	+E/-W (ft)	Direction (°)	
	0.0	0.0	0.0	275.15	

Survey Program	Date	5/18/2017			
From (ft)	To (ft)	Survey (Wellbore)	Tool Name	Description	
158.0	15,040.0	Survey #1 (Wacker 10F-204 Wellbore #1)	MWD	MWD - Standard	

Survey										
Measured Depth (ft)	Inclination (°)	Azimuth (°)	Vertical Depth (ft)	+N/-S (ft)	+E/-W (ft)	Vertical Section (ft)	Dogleg Rate (°/100usft)	Build Rate (°/100usft)	Turn Rate (°/100usft)	
0.0	0.00	0.00	0.0	0.0	0.0	0.0	0.00	0.00	0.00	
158.0	0.20	331.60	158.0	0.2	-0.1	0.2	0.13	0.13	0.00	
253.0	1.30	22.90	253.0	1.4	0.2	-0.1	1.25	1.16	54.00	
349.0	2.90	20.80	348.9	4.7	1.5	-1.1	1.67	1.67	-2.19	
444.0	4.40	26.60	443.7	10.2	4.0	-3.1	1.62	1.58	6.11	
540.0	6.30	29.40	539.3	18.0	8.2	-6.6	2.00	1.98	2.92	
635.0	8.20	27.80	633.5	28.6	13.9	-11.3	2.01	2.00	-1.68	
731.0	10.10	26.10	728.3	42.2	20.8	-17.0	2.00	1.98	-1.77	
827.0	9.80	24.30	822.9	57.2	27.9	-22.7	0.45	-0.31	-1.88	
922.0	9.80	24.00	916.5	72.0	34.5	-27.9	0.05	0.00	-0.32	

Company:	PDC Energy Inc. DJ Basin	Local Co-ordinate Reference:	Well Wacker 10F-204
Project:	Sec.10-T5N-R64W	TVD Reference:	WELL @ 4634.0ft (Ensign Rig #152 RKB-23')
Site:	Wacker 5N64W10G Pad Sec.10-T5N-R64W	MD Reference:	WELL @ 4634.0ft (Ensign Rig #152 RKB-23')
Well:	Wacker 10F-204	North Reference:	True
Wellbore:	Wacker 10F-204 Wellbore #1	Survey Calculation Method:	Minimum Curvature
Design:	Wacker 10F-204 Wellbore #1	Database:	US_EDM

Survey									
Measured Depth (ft)	Inclination (°)	Azimuth (°)	Vertical Depth (ft)	+N/-S (ft)	+E/-W (ft)	Vertical Section (ft)	Dogleg Rate (°/100usft)	Build Rate (°/100usft)	Turn Rate (°/100usft)
1,017.0	9.20	22.20	1,010.2	86.4	40.7	-32.8	0.70	-0.63	-1.89
1,112.0	8.40	21.80	1,104.1	99.8	46.1	-37.0	0.84	-0.84	-0.42
1,207.0	9.10	25.20	1,198.0	113.1	51.9	-41.5	0.92	0.74	3.58
1,302.0	8.70	25.40	1,291.8	126.4	58.2	-46.6	0.42	-0.42	0.21
1,398.0	8.10	25.90	1,386.8	139.0	64.2	-51.5	0.63	-0.63	0.52
1,493.0	8.70	27.30	1,480.8	151.4	70.5	-56.6	0.67	0.63	1.47
1,588.0	8.40	25.70	1,574.7	164.1	76.8	-61.7	0.40	-0.32	-1.68
1,625.0	7.70	27.30	1,611.3	168.7	79.1	-63.6	1.99	-1.89	4.32
1,778.0	7.70	24.10	1,763.0	187.2	88.0	-70.8	0.28	0.00	-2.09
1,874.0	7.80	31.00	1,858.1	198.6	93.9	-75.7	0.97	0.10	7.19
1,969.0	10.00	35.20	1,951.9	210.9	102.0	-82.7	2.41	2.32	4.42
2,063.0	9.70	36.10	2,044.6	224.0	111.4	-90.8	0.36	-0.32	0.96
2,159.0	8.90	36.90	2,139.3	236.4	120.6	-98.9	0.84	-0.83	0.83
2,254.0	7.70	35.40	2,233.3	247.5	128.7	-106.0	1.28	-1.26	-1.58
2,350.0	10.60	33.80	2,328.1	260.1	137.4	-113.5	3.03	3.02	-1.67
2,445.0	9.70	32.00	2,421.6	274.1	146.5	-121.3	1.00	-0.95	-1.89
2,541.0	8.80	31.90	2,516.3	287.2	154.6	-128.2	0.94	-0.94	-0.10
2,637.0	10.20	19.70	2,611.0	301.5	161.4	-133.7	2.55	1.46	-12.71
2,733.0	10.20	18.00	2,705.5	317.5	166.9	-137.7	0.31	0.00	-1.77
2,828.0	9.80	17.80	2,799.1	333.2	171.9	-141.3	0.42	-0.42	-0.21
3,019.0	8.80	16.90	2,987.5	362.7	181.1	-147.9	0.53	-0.52	-0.47
3,114.0	7.50	12.30	3,081.6	375.7	184.6	-150.1	1.53	-1.37	-4.84
3,304.0	8.20	14.10	3,269.8	401.0	190.5	-153.8	0.39	0.37	0.95
3,495.0	10.60	19.40	3,458.2	430.7	199.7	-160.2	1.33	1.26	2.77
3,591.0	10.70	20.80	3,552.6	447.4	205.8	-164.8	0.29	0.10	1.46
3,686.0	10.70	19.90	3,645.9	463.9	211.9	-169.4	0.18	0.00	-0.95
3,781.0	10.90	18.70	3,739.2	480.7	217.8	-173.8	0.32	0.21	-1.26
3,877.0	10.60	17.30	3,833.6	497.8	223.3	-177.8	0.41	-0.31	-1.46
3,972.0	9.70	16.20	3,927.1	513.8	228.2	-181.1	0.97	-0.95	-1.16
4,067.0	8.80	12.30	4,020.8	528.6	231.9	-183.6	1.15	-0.95	-4.11
4,163.0	8.10	12.20	4,115.8	542.4	234.9	-185.3	0.73	-0.73	-0.10
4,258.0	10.50	12.70	4,209.5	557.4	238.2	-187.3	2.53	2.53	0.53
4,352.0	9.50	9.90	4,302.1	573.4	241.5	-189.0	1.18	-1.06	-2.98
4,448.0	8.90	9.00	4,396.9	588.5	244.0	-190.2	0.64	-0.63	-0.94
4,543.0	8.00	5.80	4,490.8	602.3	245.8	-190.8	1.07	-0.95	-3.37
4,638.0	10.20	13.90	4,584.6	617.1	248.5	-192.1	2.67	2.32	8.53
4,734.0	9.20	10.90	4,679.3	632.9	252.0	-194.2	1.17	-1.04	-3.13
4,829.0	8.50	9.20	4,773.1	647.3	254.5	-195.4	0.79	-0.74	-1.79
4,924.0	10.30	18.30	4,866.9	662.3	258.3	-197.9	2.45	1.89	9.58
5,020.0	10.30	19.90	4,961.3	678.5	264.0	-202.0	0.30	0.00	1.67
5,116.0	9.20	19.20	5,055.9	693.8	269.4	-206.1	1.15	-1.15	-0.73
5,211.0	7.70	16.20	5,149.9	707.1	273.7	-209.1	1.65	-1.58	-3.16
5,306.0	6.50	14.30	5,244.2	718.4	276.8	-211.2	1.29	-1.26	-2.00
5,402.0	6.90	13.10	5,339.5	729.3	279.4	-212.9	0.44	0.42	-1.25

Company:	PDC Energy Inc. DJ Basin	Local Co-ordinate Reference:	Well Wacker 10F-204
Project:	Sec.10-T5N-R64W	TVD Reference:	WELL @ 4634.0ft (Ensign Rig #152 RKB-23')
Site:	Wacker 5N64W10G Pad Sec.10-T5N-R64W	MD Reference:	WELL @ 4634.0ft (Ensign Rig #152 RKB-23')
Well:	Wacker 10F-204	North Reference:	True
Wellbore:	Wacker 10F-204 Wellbore #1	Survey Calculation Method:	Minimum Curvature
Design:	Wacker 10F-204 Wellbore #1	Database:	US_EDM

Survey									
Measured Depth (ft)	Inclination (°)	Azimuth (°)	Vertical Depth (ft)	+N/-S (ft)	+E/-W (ft)	Vertical Section (ft)	Dogleg Rate (°/100usft)	Build Rate (°/100usft)	Turn Rate (°/100usft)
5,497.0	6.40	10.90	5,433.9	740.0	281.7	-214.2	0.59	-0.53	-2.32
5,592.0	6.00	5.80	5,528.3	750.2	283.2	-214.8	0.72	-0.42	-5.37
5,687.0	5.90	1.30	5,622.8	760.0	283.8	-214.5	0.50	-0.11	-4.74
5,783.0	4.00	344.20	5,718.4	768.1	283.0	-213.0	2.49	-1.98	-17.81
5,879.0	1.50	289.60	5,814.3	771.8	280.9	-210.6	3.50	-2.60	-56.88
5,974.0	3.50	265.50	5,909.2	772.0	276.9	-206.5	2.33	2.11	-25.37
6,070.0	9.00	255.30	6,004.6	769.8	266.7	-196.5	5.82	5.73	-10.63
6,164.0	14.00	269.00	6,096.7	767.8	248.2	-178.3	6.03	5.32	14.57
6,260.0	18.20	279.40	6,189.0	770.0	221.8	-151.8	5.29	4.38	10.83
6,355.0	24.60	284.50	6,277.4	777.4	188.0	-117.4	7.01	6.74	5.37
6,450.0	32.10	283.40	6,360.9	788.2	144.2	-72.9	7.91	7.89	-1.16
6,546.0	41.00	278.80	6,438.0	799.0	88.1	-16.1	9.69	9.27	-4.79
6,641.0	40.70	271.60	6,509.9	804.6	26.3	46.0	4.97	-0.32	-7.58
6,765.0	53.90	271.60	6,593.8	807.2	-64.5	136.7	10.65	10.65	0.00
6,861.0	68.50	276.00	6,639.9	812.9	-148.2	220.6	15.72	15.21	4.58
6,956.0	84.20	272.70	6,662.3	819.8	-240.0	312.6	16.87	16.53	-3.47
7,051.0	91.90	266.00	6,665.5	818.7	-334.8	406.9	10.74	8.11	-7.05
Deepest TVD Drilled - 6665.53' TVD									
7,146.0	91.30	265.50	6,662.9	811.7	-429.5	500.6	0.82	-0.63	-0.53
7,241.0	90.40	263.70	6,661.5	802.8	-524.1	594.0	2.12	-0.95	-1.89
7,337.0	89.30	265.50	6,661.7	793.7	-619.6	688.3	2.20	-1.15	1.88
7,433.0	89.40	267.60	6,662.8	788.0	-715.4	783.2	2.19	0.10	2.19
7,528.0	90.50	269.50	6,662.9	785.5	-810.4	877.6	2.31	1.16	2.00
7,623.0	91.80	271.10	6,661.0	786.0	-905.4	972.2	2.17	1.37	1.68
7,718.0	91.70	270.60	6,658.1	787.5	-1,000.3	1,066.9	0.54	-0.11	-0.53
7,814.0	91.90	270.20	6,655.1	788.1	-1,096.3	1,162.6	0.47	0.21	-0.42
7,909.0	89.50	269.70	6,653.9	788.0	-1,191.3	1,257.2	2.58	-2.53	-0.53
8,003.0	89.20	269.30	6,655.0	787.2	-1,285.2	1,350.7	0.53	-0.32	-0.43
8,099.0	88.90	269.50	6,656.6	786.2	-1,381.2	1,446.2	0.38	-0.31	0.21
8,195.0	89.30	269.00	6,658.1	785.0	-1,477.2	1,541.7	0.67	0.42	-0.52
8,291.0	88.80	269.30	6,659.7	783.5	-1,573.2	1,637.1	0.61	-0.52	0.31
8,386.0	88.50	268.80	6,661.9	782.0	-1,668.1	1,731.6	0.61	-0.32	-0.53
8,482.0	90.70	270.60	6,662.6	781.5	-1,764.1	1,827.1	2.96	2.29	1.88
8,577.0	91.90	270.70	6,660.4	782.5	-1,859.1	1,921.8	1.27	1.26	0.11
8,673.0	92.00	269.90	6,657.1	783.0	-1,955.0	2,017.4	0.84	0.10	-0.83
8,769.0	91.80	269.30	6,654.0	782.4	-2,051.0	2,112.9	0.66	-0.21	-0.63
8,863.0	89.50	270.70	6,652.9	782.4	-2,145.0	2,206.5	2.86	-2.45	1.49
8,959.0	89.30	270.60	6,653.9	783.5	-2,241.0	2,302.2	0.23	-0.21	-0.10
9,052.0	88.70	270.20	6,655.5	784.1	-2,333.9	2,394.9	0.78	-0.65	-0.43
9,148.0	89.70	270.70	6,656.9	784.9	-2,429.9	2,490.5	1.16	1.04	0.52
9,242.0	89.40	270.20	6,657.6	785.6	-2,523.9	2,584.2	0.62	-0.32	-0.53
9,338.0	89.00	270.40	6,658.9	786.1	-2,619.9	2,679.9	0.47	-0.42	0.21
9,433.0	88.80	270.00	6,660.8	786.4	-2,714.9	2,774.5	0.47	-0.21	-0.42

Company:	PDC Energy Inc. DJ Basin	Local Co-ordinate Reference:	Well Wacker 10F-204
Project:	Sec.10-T5N-R64W	TVD Reference:	WELL @ 4634.0ft (Ensign Rig #152 RKB-23')
Site:	Wacker 5N64W10G Pad Sec.10-T5N-R64W	MD Reference:	WELL @ 4634.0ft (Ensign Rig #152 RKB-23')
Well:	Wacker 10F-204	North Reference:	True
Wellbore:	Wacker 10F-204 Wellbore #1	Survey Calculation Method:	Minimum Curvature
Design:	Wacker 10F-204 Wellbore #1	Database:	US_EDM

Survey									
Measured Depth (ft)	Inclination (°)	Azimuth (°)	Vertical Depth (ft)	+N/-S (ft)	+E/-W (ft)	Vertical Section (ft)	Dogleg Rate (°/100usft)	Build Rate (°/100usft)	Turn Rate (°/100usft)
9,528.0	90.10	270.20	6,661.7	786.6	-2,809.9	2,869.1	1.38	1.37	0.21
9,623.0	90.50	269.90	6,661.2	786.7	-2,904.9	2,963.7	0.53	0.42	-0.32
9,719.0	90.00	269.50	6,660.8	786.2	-3,000.9	3,059.3	0.67	-0.52	-0.42
9,814.0	90.00	269.90	6,660.8	785.7	-3,095.9	3,153.9	0.42	0.00	0.42
9,910.0	89.30	269.70	6,661.4	785.3	-3,191.9	3,249.5	0.76	-0.73	-0.21
10,005.0	90.80	269.50	6,661.3	784.7	-3,286.9	3,344.0	1.59	1.58	-0.21
10,101.0	90.60	269.00	6,660.1	783.4	-3,382.9	3,439.5	0.56	-0.21	-0.52
10,196.0	90.30	269.20	6,659.4	781.9	-3,477.8	3,534.0	0.38	-0.32	0.21
10,292.0	90.10	269.20	6,659.0	780.6	-3,573.8	3,629.4	0.21	-0.21	0.00
10,386.0	90.10	269.00	6,658.9	779.1	-3,667.8	3,722.9	0.21	0.00	-0.21
10,482.0	90.00	268.50	6,658.8	777.0	-3,763.8	3,818.3	0.53	-0.10	-0.52
10,578.0	89.80	268.30	6,658.9	774.3	-3,859.8	3,913.7	0.29	-0.21	-0.21
10,673.0	89.90	271.10	6,659.2	773.8	-3,954.7	4,008.2	2.95	0.11	2.95
10,769.0	89.30	270.70	6,659.9	775.4	-4,050.7	4,104.0	0.75	-0.63	-0.42
10,864.0	89.50	270.90	6,660.8	776.7	-4,145.7	4,198.7	0.30	0.21	0.21
10,959.0	90.70	271.40	6,660.7	778.6	-4,240.7	4,293.4	1.37	1.26	0.53
11,055.0	91.20	271.40	6,659.1	780.9	-4,336.7	4,389.2	0.52	0.52	0.00
11,151.0	91.50	270.90	6,656.8	782.9	-4,432.6	4,485.0	0.61	0.31	-0.52
11,246.0	91.70	270.20	6,654.2	783.8	-4,527.6	4,579.6	0.77	0.21	-0.74
11,342.0	91.90	270.00	6,651.2	783.9	-4,623.5	4,675.2	0.29	0.21	-0.21
11,438.0	89.80	269.70	6,649.7	783.7	-4,719.5	4,770.8	2.21	-2.19	-0.31
11,533.0	90.00	269.50	6,649.9	783.0	-4,814.5	4,865.3	0.30	0.21	-0.21
11,629.0	89.60	269.20	6,650.2	781.9	-4,910.5	4,960.8	0.52	-0.42	-0.31
11,724.0	89.30	268.80	6,651.2	780.3	-5,005.5	5,055.3	0.53	-0.32	-0.42
11,819.0	89.20	268.60	6,652.4	778.1	-5,100.4	5,149.7	0.24	-0.11	-0.21
11,915.0	89.30	268.60	6,653.7	775.8	-5,196.4	5,245.0	0.10	0.10	0.00
12,010.0	89.20	267.90	6,654.9	772.9	-5,291.3	5,339.3	0.74	-0.11	-0.74
12,105.0	88.90	268.10	6,656.5	769.6	-5,386.3	5,433.6	0.38	-0.32	0.21
12,201.0	88.70	267.80	6,658.5	766.1	-5,482.2	5,528.8	0.38	-0.21	-0.31
12,296.0	89.20	270.20	6,660.2	764.5	-5,577.2	5,623.3	2.58	0.53	2.53
12,392.0	89.90	270.40	6,661.0	765.0	-5,673.2	5,718.9	0.76	0.73	0.21
12,487.0	89.40	270.00	6,661.6	765.3	-5,768.1	5,813.5	0.67	-0.53	-0.42
12,583.0	90.40	271.40	6,661.7	766.5	-5,864.1	5,909.3	1.79	1.04	1.46
12,677.0	90.70	270.70	6,660.8	768.2	-5,958.1	6,003.0	0.81	0.32	-0.74
12,773.0	90.80	270.60	6,659.6	769.3	-6,054.1	6,098.7	0.15	0.10	-0.10
12,868.0	91.50	270.40	6,657.7	770.1	-6,149.1	6,193.4	0.77	0.74	-0.21
12,963.0	92.10	270.60	6,654.7	770.9	-6,244.0	6,288.0	0.67	0.63	0.21
13,058.0	91.20	270.90	6,651.9	772.2	-6,339.0	6,382.7	1.00	-0.95	0.32
13,154.0	91.60	270.60	6,649.6	773.4	-6,434.9	6,478.4	0.52	0.42	-0.31
13,249.0	92.00	269.90	6,646.6	773.9	-6,529.9	6,573.0	0.85	0.42	-0.74
13,344.0	90.00	269.30	6,645.0	773.2	-6,624.9	6,667.5	2.20	-2.11	-0.63
13,440.0	90.10	268.50	6,644.9	771.4	-6,720.9	6,763.0	0.84	0.10	-0.83
13,535.0	90.60	267.90	6,644.3	768.4	-6,815.8	6,857.3	0.82	0.53	-0.63
13,631.0	89.50	269.50	6,644.2	766.2	-6,911.8	6,952.6	2.02	-1.15	1.67

Company:	PDC Energy Inc. DJ Basin	Local Co-ordinate Reference:	Well Wacker 10F-204
Project:	Sec.10-T5N-R64W	TVD Reference:	WELL @ 4634.0ft (Ensign Rig #152 RKB-23')
Site:	Wacker 5N64W10G Pad Sec.10-T5N-R64W	MD Reference:	WELL @ 4634.0ft (Ensign Rig #152 RKB-23')
Well:	Wacker 10F-204	North Reference:	True
Wellbore:	Wacker 10F-204 Wellbore #1	Survey Calculation Method:	Minimum Curvature
Design:	Wacker 10F-204 Wellbore #1	Database:	US_EDM

Survey									
Measured Depth (ft)	Inclination (°)	Azimuth (°)	Vertical Depth (ft)	+N/-S (ft)	+E/-W (ft)	Vertical Section (ft)	Dogleg Rate (°/100usft)	Build Rate (°/100usft)	Turn Rate (°/100usft)
13,726.0	90.00	269.30	6,644.6	765.2	-7,006.8	7,047.2	0.57	0.53	-0.21
13,821.0	90.20	269.30	6,644.5	764.0	-7,101.8	7,141.7	0.21	0.21	0.00
13,917.0	90.70	269.00	6,643.7	762.6	-7,197.7	7,237.1	0.61	0.52	-0.31
14,013.0	91.20	268.30	6,642.1	760.3	-7,293.7	7,332.5	0.90	0.52	-0.73
14,109.0	90.20	269.90	6,640.9	758.8	-7,389.7	7,428.0	1.97	-1.04	1.67
14,204.0	90.50	269.50	6,640.4	758.3	-7,484.7	7,522.5	0.53	0.32	-0.42
14,299.0	89.20	269.70	6,640.6	757.7	-7,579.7	7,617.1	1.38	-1.37	0.21
14,394.0	89.50	269.90	6,641.7	757.3	-7,674.7	7,711.7	0.38	0.32	0.21
14,490.0	90.00	269.70	6,642.1	757.0	-7,770.7	7,807.2	0.56	0.52	-0.21
14,585.0	90.60	269.00	6,641.6	755.9	-7,865.7	7,901.8	0.97	0.63	-0.74
14,680.0	89.00	269.70	6,641.9	754.9	-7,960.6	7,996.3	1.84	-1.68	0.74
14,775.0	89.30	270.60	6,643.3	755.1	-8,055.6	8,090.9	1.00	0.32	0.95
14,871.0	90.00	268.80	6,643.9	754.6	-8,151.6	8,186.5	2.01	0.73	-1.88
14,966.0	89.90	268.30	6,644.0	752.2	-8,246.6	8,280.8	0.54	-0.11	-0.53
14,983.0	89.70	267.90	6,644.1	751.6	-8,263.6	8,297.7	2.63	-1.18	-2.35
15,040.0	89.70	267.90	6,644.4	749.5	-8,320.5	8,354.2	0.00	0.00	0.00

Design Targets									
Target Name	Dip Angle (°)	Dip Dir. (°)	TVD (ft)	+N/-S (ft)	+E/-W (ft)	Northing (usft)	Easting (usft)	Latitude	Longitude
- hit/miss target									
- Shape									
SHL 2017'FNL, 398'FWL	0.00	0.00	1.0	0.0	0.0	1,395,629.54	3,266,124.01	40.415468	-104.544237
- survey hits target center									
- Point									
BHL 1235'FNL, 2645'FW	0.00	0.00	6,645.0	754.8	-8,320.9	1,396,294.59	3,257,795.79	40.417536	-104.574120
- survey misses target center by 5.3ft at 15040.0ft MD (6644.4 TVD, 749.5 N, -8320.5 E)									
- Point									

Survey Annotations				
Measured Depth (ft)	Vertical Depth (ft)	Local Coordinates		Comment
		+N/-S (ft)	+E/-W (ft)	
7,051.0	6,665.5	818.7	-334.8	Deepest TVD Drilled - 6665.53' TVD

Checked By: _____ Approved By: _____ Date: _____