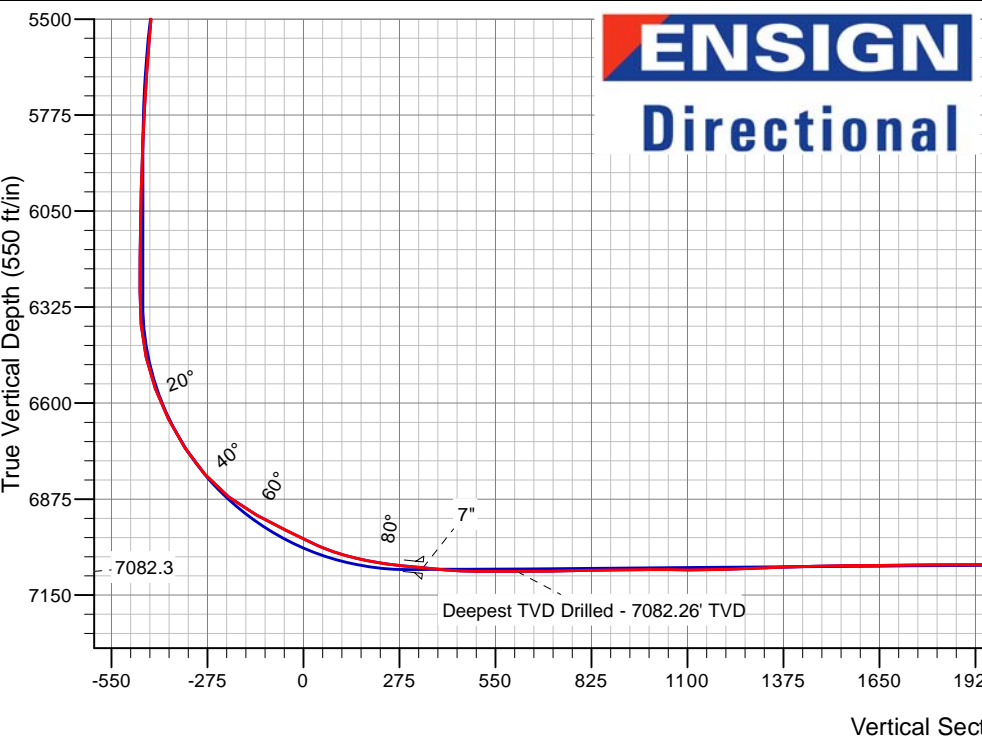
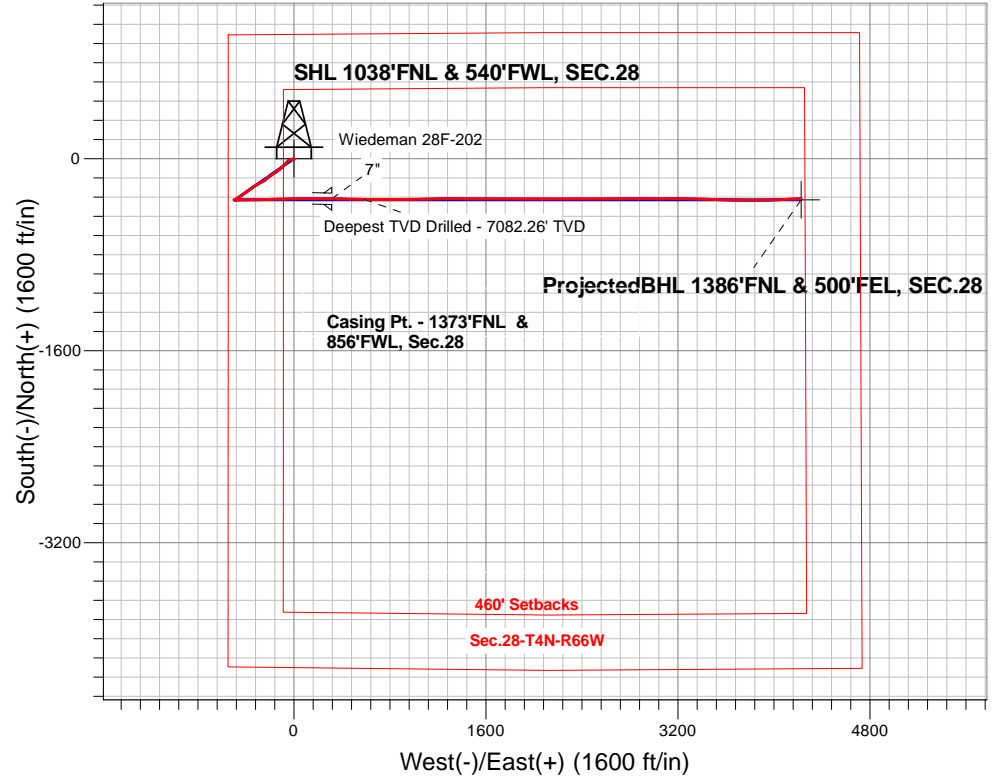


PETROLEUM DEVELOPMENT CORP DJ Basin

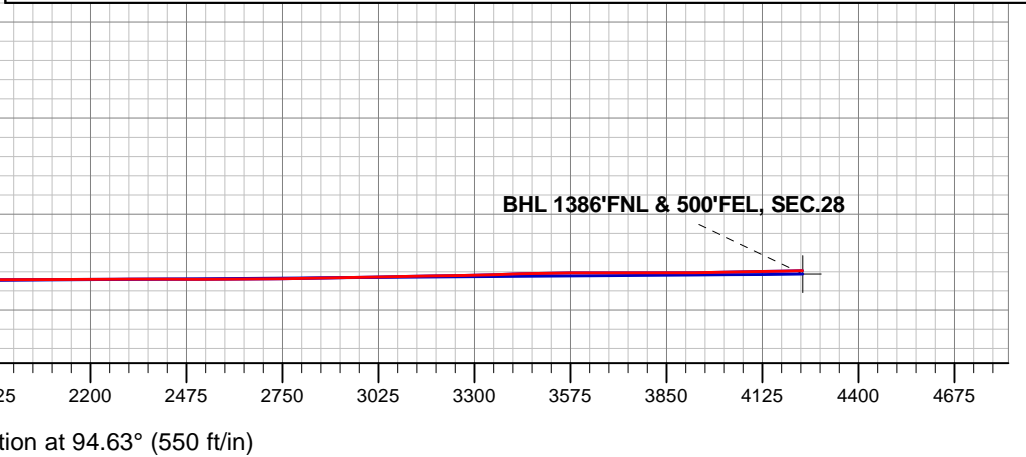
Well Name: **Wiedeman 28F-202**  
Surface Location: Wiedeman 4N66W28F - East Pad Sec.28-T4N-R66W  
North American Datum 1983 , US State Plane 1983, Colorado Northern Zone  
Ground Elevation: 4762.0  
+N/-S+E/-W Northing Easting Latitude Longitude Slot  
0.0 0.0 348188.33 3198078.21 40.287000 -104.789970  
Ensign Rig #134 RKB - 13' WELL @ 4775.0ft (Ensign Rig #134 RKB - 13')

FINAL SURVEY

Projected Bottom Hole Location  
11500'MD 7037'TVD 333'S & 4226'E of SHL  
91.1 degree Incl @ 86.5degree AZM



Wiedeman 4N66W28F - East Pad Sec.28-T4N-R66W Wiedeman 28F-202 Wellbore #1 11:54, November 04 2015	ANNOTATIONS		
	TVD	MD	Annotation
	7082.3	7858.0	Deepest TVD Drilled - 7082.26' TVD
LEGEND			
Wiedeman 28F-202, Wellbore #1, Plan #1 (10-13-15) V0			
Wellbore #1			
Survey #1			





# **PETROLEUM DEVELOPMENT CORP DJ Basin**

**SEC.28-T4N-R66W**

**Wiedeman 4N66W28F - East Pad Sec.28-T4N-R66W**

**Wiedeman 28F-202**

**Wellbore #1**

**Survey: Survey #1**

## **Standard Survey Report**

**04 November, 2015**

<b>Company:</b>	PETROLEUM DEVELOPMENT CORP DJ Basin	<b>Local Co-ordinate Reference:</b>	Well Wiedeman 28F-202
<b>Project:</b>	SEC.28-T4N-R66W	<b>TVD Reference:</b>	WELL @ 4775.0ft (Ensign Rig #134 RKB - 13')
<b>Site:</b>	Wiedeman 4N66W28F - East Pad Sec.28-T4N-R66W	<b>MD Reference:</b>	WELL @ 4775.0ft (Ensign Rig #134 RKB - 13')
<b>Well:</b>	Wiedeman 28F-202	<b>North Reference:</b>	True
<b>Wellbore:</b>	Wellbore #1	<b>Survey Calculation Method:</b>	Minimum Curvature
<b>Design:</b>	Wellbore #1	<b>Database:</b>	US_EDM

<b>Project</b>	SEC.28-T4N-R66W, Weld County, Colorado		
<b>Map System:</b>	US State Plane 1983	<b>System Datum:</b>	Mean Sea Level
<b>Geo Datum:</b>	North American Datum 1983		Using Well Reference Point
<b>Map Zone:</b>	Colorado Northern Zone		Using geodetic scale factor

Site		Wiedeman 4N66W28F - East Pad Sec.28-T4N-R66W			
Site Position:		Northing:	1,348,308.56 usft	Latitude:	40.287330
From:	Lat/Long	Easting:	3,198,077.24 usft	Longitude:	-104.789970
Position Uncertainty:	0.0 ft	Slot Radius:	13-3/16 "	Grid Convergence:	0.46 °

Well	Wiedeman 28F-202					
Well Position	+N/-S	0.0 ft	Northing:	1,348,188.33 usft	Latitude:	40.287000
	+E/-W	0.0 ft	Easting:	3,198,078.21 usft	Longitude:	-104.789970
Position Uncertainty		0.0 ft	Wellhead Elevation:	ft	Ground Level:	4,762.0 ft

<b>Wellbore</b>	Wellbore #1				
<b>Magnetics</b>	<b>Model Name</b>	<b>Sample Date</b>	<b>Declination (°)</b>	<b>Dip Angle (°)</b>	<b>Field Strength (nT)</b>
	IGRF2010	10/13/2015	8.29	66.81	52,614

<b>Design</b>	Wellbore #1				
<b>Audit Notes:</b>					
<b>Version:</b>	1.0	<b>Phase:</b>	ACTUAL	<b>Tie On Depth:</b>	0.0
<b>Vertical Section:</b>	<b>Depth From (TVD) (ft)</b>	<b>+N/-S (ft)</b>	<b>+E/-W (ft)</b>	<b>Direction (°)</b>	
	0.0	0.0	0.0	94.63	

<b>Survey Program</b>	<b>Date</b>	11/4/2015			
<b>From (ft)</b>	<b>To (ft)</b>	<b>Survey (Wellbore)</b>	<b>Tool Name</b>	<b>Description</b>	
74.0	11,500.0	Survey #1 (Wellbore #1)	MWD	MWD - Standard	

<b>Survey</b>										
<b>Measured Depth (ft)</b>	<b>Inclination (°)</b>	<b>Azimuth (°)</b>	<b>Vertical Depth (ft)</b>	<b>+N/-S (ft)</b>	<b>+E/-W (ft)</b>	<b>Vertical Section (ft)</b>	<b>Dogleg Rate (°/100usft)</b>	<b>Build Rate (°/100usft)</b>	<b>Turn Rate (°/100usft)</b>	
0.0	0.00	0.00	0.0	0.0	0.0	0.0	0.00	0.00	0.00	
1.0	0.01	199.20	1.0	0.0	0.0	0.0	0.95	0.95	0.00	
<b>SHL 1038'FNL &amp; 540'FWL, SEC.28</b>										
74.0	0.70	199.20	74.0	-0.4	-0.1	-0.1	0.95	0.95	0.00	
166.0	0.60	176.70	166.0	-1.4	-0.3	-0.2	0.30	-0.11	-24.46	
261.0	0.50	197.90	261.0	-2.3	-0.4	-0.2	0.24	-0.11	22.32	
353.0	0.50	188.80	353.0	-3.1	-0.6	-0.3	0.09	0.00	-9.89	
443.0	0.70	176.60	443.0	-4.0	-0.6	-0.3	0.26	0.22	-13.56	
535.0	1.00	203.60	535.0	-5.3	-0.9	-0.5	0.54	0.33	29.35	
628.0	1.20	191.30	628.0	-7.0	-1.4	-0.8	0.33	0.22	-13.23	

<b>Company:</b>	PETROLEUM DEVELOPMENT CORP DJ Basin	<b>Local Co-ordinate Reference:</b>	Well Wiedeman 28F-202
<b>Project:</b>	SEC.28-T4N-R66W	<b>TVD Reference:</b>	WELL @ 4775.0ft (Ensign Rig #134 RKB - 13')
<b>Site:</b>	Wiedeman 4N66W28F - East Pad Sec.28-T4N-R66W	<b>MD Reference:</b>	WELL @ 4775.0ft (Ensign Rig #134 RKB - 13')
<b>Well:</b>	Wiedeman 28F-202	<b>North Reference:</b>	True
<b>Wellbore:</b>	Wellbore #1	<b>Survey Calculation Method:</b>	Minimum Curvature
<b>Design:</b>	Wellbore #1	<b>Database:</b>	US_EDM

Survey										
Measured Depth (ft)	Inclination (°)	Azimuth (°)	Vertical Depth (ft)	+N/-S (ft)	+E/-W (ft)	Vertical Section (ft)	Dogleg Rate (°/100usft)	Build Rate (°/100usft)	Turn Rate (°/100usft)	
720.0	0.40	234.00	719.9	-8.2	-1.9	-1.2	1.03	-0.87	46.41	
812.0	0.50	241.70	811.9	-8.6	-2.5	-1.8	0.13	0.11	8.37	
912.0	0.50	250.90	911.9	-8.9	-3.3	-2.6	0.08	0.00	9.20	
1,011.0	0.30	273.20	1,010.9	-9.0	-3.9	-3.2	0.25	-0.20	22.53	
1,103.0	0.20	196.20	1,102.9	-9.2	-4.2	-3.5	0.35	-0.11	-83.70	
1,195.0	0.10	259.10	1,194.9	-9.3	-4.4	-3.6	0.19	-0.11	68.37	
1,287.0	0.80	332.60	1,286.9	-8.8	-4.7	-4.0	0.85	0.76	79.89	
1,380.0	2.10	314.10	1,379.9	-7.0	-6.3	-5.7	1.47	1.40	-19.89	
1,472.0	3.00	287.60	1,471.8	-5.1	-9.8	-9.3	1.59	0.98	-28.80	
1,565.0	4.40	272.10	1,564.6	-4.3	-15.6	-15.2	1.84	1.51	-16.67	
1,657.0	5.50	257.90	1,656.3	-5.0	-23.5	-23.0	1.78	1.20	-15.43	
1,750.0	5.90	239.60	1,748.8	-8.4	-32.0	-31.2	1.99	0.43	-19.68	
1,842.0	7.20	233.80	1,840.2	-14.2	-40.7	-39.4	1.58	1.41	-6.30	
1,937.0	8.50	228.20	1,934.3	-22.4	-50.7	-48.8	1.59	1.37	-5.89	
2,033.0	8.30	225.40	2,029.3	-32.0	-61.0	-58.2	0.47	-0.21	-2.92	
2,128.0	8.40	224.00	2,123.3	-41.8	-70.7	-67.1	0.24	0.11	-1.47	
2,223.0	8.20	222.60	2,217.3	-51.8	-80.1	-75.6	0.30	-0.21	-1.47	
2,319.0	8.30	225.60	2,312.3	-61.7	-89.6	-84.4	0.46	0.10	3.13	
2,414.0	9.40	228.00	2,406.2	-71.7	-100.3	-94.2	1.22	1.16	2.53	
2,509.0	9.50	222.00	2,499.9	-82.7	-111.3	-104.3	1.04	0.11	-6.32	
2,605.0	10.10	231.90	2,594.5	-93.8	-123.2	-115.3	1.86	0.63	10.31	
2,700.0	9.80	236.60	2,688.1	-103.3	-136.6	-127.8	0.91	-0.32	4.95	
2,795.0	10.20	237.30	2,781.6	-112.3	-150.4	-140.8	0.44	0.42	0.74	
2,890.0	8.40	238.70	2,875.4	-120.5	-163.4	-153.1	1.91	-1.89	1.47	
2,985.0	8.10	238.20	2,969.4	-127.6	-175.0	-164.1	0.32	-0.32	-0.53	
3,081.0	7.70	235.90	3,064.5	-134.8	-186.1	-174.6	0.53	-0.42	-2.40	
3,176.0	7.40	234.90	3,158.7	-141.9	-196.4	-184.3	0.34	-0.32	-1.05	
3,271.0	8.40	232.20	3,252.7	-149.6	-206.8	-194.1	1.12	1.05	-2.84	
3,366.0	7.70	229.10	3,346.8	-158.1	-217.1	-203.7	0.87	-0.74	-3.26	
3,462.0	7.30	231.20	3,442.0	-166.1	-226.8	-212.6	0.51	-0.42	2.19	
3,557.0	6.80	227.80	3,536.3	-173.7	-235.6	-220.8	0.69	-0.53	-3.58	
3,652.0	6.90	233.50	3,630.6	-180.8	-244.4	-229.0	0.72	0.11	6.00	
3,747.0	7.70	241.70	3,724.8	-187.2	-254.6	-238.6	1.38	0.84	8.63	
3,842.0	8.40	240.50	3,818.9	-193.7	-266.2	-249.7	0.76	0.74	-1.26	
3,938.0	8.40	242.60	3,913.9	-200.4	-278.5	-261.5	0.32	0.00	2.19	
4,033.0	7.80	241.60	4,007.9	-206.6	-290.4	-272.8	0.65	-0.63	-1.05	
4,128.0	7.50	239.10	4,102.1	-212.9	-301.4	-283.2	0.47	-0.32	-2.63	
4,223.0	7.60	239.30	4,196.2	-219.3	-312.1	-293.4	0.11	0.11	0.21	
4,318.0	9.20	237.70	4,290.2	-226.5	-323.9	-304.6	1.70	1.68	-1.68	
4,413.0	9.00	235.40	4,384.0	-234.8	-336.4	-316.4	0.44	-0.21	-2.42	
4,509.0	8.40	234.70	4,478.9	-243.1	-348.3	-327.6	0.63	-0.63	-0.73	
4,604.0	8.10	232.90	4,572.9	-251.2	-359.3	-337.9	0.42	-0.32	-1.89	

<b>Company:</b>	PETROLEUM DEVELOPMENT CORP DJ Basin	<b>Local Co-ordinate Reference:</b>	Well Wiedeman 28F-202
<b>Project:</b>	SEC.28-T4N-R66W	<b>TVD Reference:</b>	WELL @ 4775.0ft (Ensign Rig #134 RKB - 13')
<b>Site:</b>	Wiedeman 4N66W28F - East Pad Sec.28-T4N-R66W	<b>MD Reference:</b>	WELL @ 4775.0ft (Ensign Rig #134 RKB - 13')
<b>Well:</b>	Wiedeman 28F-202	<b>North Reference:</b>	True
<b>Wellbore:</b>	Wellbore #1	<b>Survey Calculation Method:</b>	Minimum Curvature
<b>Design:</b>	Wellbore #1	<b>Database:</b>	US_EDM

Survey									
Measured Depth (ft)	Inclination (°)	Azimuth (°)	Vertical Depth (ft)	+N/-S (ft)	+E/-W (ft)	Vertical Section (ft)	Dogleg Rate (°/100usft)	Build Rate (°/100usft)	Turn Rate (°/100usft)
4,699.0	6.90	230.80	4,667.1	-258.8	-369.1	-347.0	1.30	-1.26	-2.21
4,795.0	8.10	234.00	4,762.3	-266.4	-379.0	-356.3	1.32	1.25	3.33
4,890.0	9.30	233.80	4,856.2	-274.9	-390.7	-367.2	1.26	1.26	-0.21
4,985.0	9.30	235.00	4,950.0	-283.8	-403.1	-378.9	0.20	0.00	1.26
5,080.0	8.30	235.90	5,043.8	-292.1	-415.1	-390.2	1.06	-1.05	0.95
5,176.0	7.40	237.00	5,138.9	-299.3	-426.0	-400.5	0.95	-0.94	1.15
5,271.0	7.50	232.60	5,233.1	-306.4	-436.1	-409.9	0.61	0.11	-4.63
5,366.0	8.10	234.90	5,327.3	-314.0	-446.5	-419.7	0.71	0.63	2.42
5,461.0	7.20	235.80	5,421.4	-321.2	-456.9	-429.5	0.96	-0.95	0.95
5,557.0	6.40	237.50	5,516.7	-327.5	-466.4	-438.4	0.86	-0.83	1.77
5,652.0	5.20	240.70	5,611.2	-332.4	-474.6	-446.2	1.31	-1.26	3.37
5,747.0	4.50	235.80	5,705.9	-336.6	-481.4	-452.7	0.86	-0.74	-5.16
5,843.0	2.80	241.00	5,801.7	-339.9	-486.6	-457.6	1.80	-1.77	5.42
5,938.0	2.40	243.50	5,896.6	-341.9	-490.4	-461.2	0.44	-0.42	2.63
6,033.0	1.80	270.20	5,991.5	-342.8	-493.7	-464.4	1.19	-0.63	28.11
6,129.0	1.60	272.70	6,087.5	-342.7	-496.5	-467.3	0.22	-0.21	2.60
6,224.0	0.20	177.70	6,182.5	-342.8	-497.8	-468.6	1.72	-1.47	-100.00
6,319.0	0.40	237.00	6,277.5	-343.2	-498.1	-468.8	0.36	0.21	62.42
6,415.0	4.40	94.60	6,373.4	-343.7	-494.7	-465.4	4.92	4.17	-148.33
6,510.0	12.60	89.30	6,467.3	-343.8	-480.7	-451.4	8.66	8.63	-5.58
6,605.0	20.30	87.60	6,558.3	-343.0	-453.8	-424.7	8.12	8.11	-1.79
6,700.0	26.60	89.00	6,645.4	-341.9	-416.1	-387.1	6.66	6.63	1.47
6,796.0	33.20	90.20	6,728.6	-341.7	-368.2	-339.5	6.90	6.88	1.25
6,891.0	40.60	91.40	6,804.5	-342.5	-311.3	-282.6	7.83	7.79	1.26
6,986.0	53.40	86.00	6,869.2	-340.6	-242.0	-213.7	14.09	13.47	-5.68
7,082.0	61.30	88.40	6,921.0	-336.7	-161.3	-133.6	8.49	8.23	2.50
7,176.0	63.80	89.00	6,964.3	-334.8	-77.9	-50.7	2.72	2.66	0.64
7,223.0	64.30	89.90	6,984.9	-334.4	-35.7	-8.6	2.02	1.06	1.91
7,271.0	64.90	89.70	7,005.5	-334.3	7.7	34.6	1.31	1.25	-0.42
7,318.0	71.30	89.70	7,023.0	-334.0	51.3	78.0	13.62	13.62	0.00
7,366.0	74.00	89.10	7,037.3	-333.6	97.1	123.7	5.75	5.63	-1.25
7,413.0	78.30	89.30	7,048.5	-332.9	142.7	169.1	9.16	9.15	0.43
7,461.0	80.80	90.20	7,057.2	-332.7	189.9	216.1	5.53	5.21	1.88
7,508.0	83.40	90.70	7,063.7	-333.1	236.4	262.5	5.63	5.53	1.06
7,537.0	84.10	91.30	7,066.9	-333.6	265.3	291.3	3.17	2.41	2.07
7,587.9	84.47	90.87	7,071.9	-334.6	315.9	341.9	1.12	0.74	-0.84
7"									
7,632.0	84.80	90.50	7,076.0	-335.1	359.8	385.7	1.12	0.74	-0.84
7,713.0	87.80	91.60	7,081.3	-336.6	440.6	466.3	3.94	3.70	1.36
7,763.0	90.50	91.20	7,082.0	-337.8	490.6	516.2	5.46	5.40	-0.80
7,858.0	89.20	90.90	7,082.3	-339.5	585.6	611.0	1.40	-1.37	-0.32
Deepest TVD Drilled - 7082.26' TVD									
7,954.0	91.60	90.20	7,081.6	-340.4	681.5	706.8	2.60	2.50	-0.73

<b>Company:</b>	PETROLEUM DEVELOPMENT CORP DJ Basin	<b>Local Co-ordinate Reference:</b>	Well Wiedeman 28F-202
<b>Project:</b>	SEC.28-T4N-R66W	<b>TVD Reference:</b>	WELL @ 4775.0ft (Ensign Rig #134 RKB - 13')
<b>Site:</b>	Wiedeman 4N66W28F - East Pad Sec.28-T4N-R66W	<b>MD Reference:</b>	WELL @ 4775.0ft (Ensign Rig #134 RKB - 13')
<b>Well:</b>	Wiedeman 28F-202	<b>North Reference:</b>	True
<b>Wellbore:</b>	Wellbore #1	<b>Survey Calculation Method:</b>	Minimum Curvature
<b>Design:</b>	Wellbore #1	<b>Database:</b>	US_EDM

Survey									
Measured Depth (ft)	Inclination (°)	Azimuth (°)	Vertical Depth (ft)	+N/-S (ft)	+E/-W (ft)	Vertical Section (ft)	Dogleg Rate (°/100usft)	Build Rate (°/100usft)	Turn Rate (°/100usft)
8,049.0	91.20	89.80	7,079.3	-340.4	776.5	801.5	0.60	-0.42	-0.42
8,144.0	90.80	89.70	7,077.6	-340.0	871.5	896.1	0.43	-0.42	-0.11
8,239.0	90.10	90.00	7,076.9	-339.8	966.5	990.8	0.80	-0.74	0.32
8,334.0	88.70	87.90	7,077.9	-338.0	1,061.5	1,085.3	2.66	-1.47	-2.21
8,429.0	92.20	89.00	7,077.1	-335.5	1,156.4	1,179.7	3.86	3.68	1.16
8,524.0	91.90	88.80	7,073.7	-333.7	1,251.3	1,274.2	0.38	-0.32	-0.21
8,619.0	92.10	90.50	7,070.4	-333.1	1,346.3	1,368.8	1.80	0.21	1.79
8,715.0	91.40	90.40	7,067.5	-333.8	1,442.2	1,464.5	0.74	-0.73	-0.10
8,810.0	90.60	89.80	7,065.8	-334.0	1,537.2	1,559.1	1.05	-0.84	-0.63
8,905.0	90.40	90.70	7,065.0	-334.4	1,632.2	1,653.9	0.97	-0.21	0.95
9,000.0	90.80	90.20	7,064.0	-335.2	1,727.2	1,748.6	0.67	0.42	-0.53
9,095.0	90.20	90.00	7,063.2	-335.3	1,822.2	1,843.3	0.67	-0.63	-0.21
9,190.0	90.30	90.20	7,062.7	-335.5	1,917.2	1,938.0	0.24	0.11	0.21
9,286.0	89.90	90.70	7,062.6	-336.2	2,013.2	2,033.8	0.67	-0.42	0.52
9,381.0	90.20	90.20	7,062.5	-337.0	2,108.2	2,128.5	0.61	0.32	-0.53
9,476.0	90.40	89.80	7,062.0	-337.0	2,203.2	2,223.2	0.47	0.21	-0.42
9,571.0	90.30	90.00	7,061.4	-336.8	2,298.2	2,317.9	0.24	-0.11	0.21
9,666.0	89.70	89.30	7,061.4	-336.2	2,393.2	2,412.5	0.97	-0.63	-0.74
9,761.0	90.20	89.00	7,061.5	-334.8	2,488.2	2,507.1	0.61	0.53	-0.32
9,856.0	90.30	89.80	7,061.1	-333.8	2,583.2	2,601.7	0.85	0.11	0.84
9,952.0	90.80	90.50	7,060.2	-334.1	2,679.2	2,697.4	0.90	0.52	0.73
10,047.0	89.70	89.30	7,059.7	-333.9	2,774.2	2,792.0	1.71	-1.16	-1.26
10,142.0	92.00	89.10	7,058.3	-332.6	2,869.1	2,886.6	2.43	2.42	-0.21
10,237.0	91.50	91.10	7,055.4	-332.8	2,964.1	2,981.3	2.17	-0.53	2.11
10,332.0	91.10	90.40	7,053.3	-334.0	3,059.0	3,076.0	0.85	-0.42	-0.74
10,428.0	90.20	89.50	7,052.2	-333.9	3,155.0	3,171.7	1.33	-0.94	-0.94
10,523.0	91.30	89.50	7,051.0	-333.1	3,250.0	3,266.3	1.16	1.16	0.00
10,618.0	91.60	92.10	7,048.5	-334.4	3,345.0	3,361.0	2.75	0.32	2.74
10,713.0	91.60	92.70	7,045.9	-338.4	3,439.9	3,455.9	0.63	0.00	0.63
10,808.0	90.90	91.70	7,043.8	-342.0	3,534.8	3,550.8	1.28	-0.74	-1.05
10,903.0	90.30	91.10	7,042.8	-344.4	3,629.7	3,645.7	0.89	-0.63	-0.63
10,999.0	89.70	91.20	7,042.8	-346.3	3,725.7	3,741.5	0.63	-0.63	0.10
11,094.0	89.70	89.80	7,043.3	-347.1	3,820.7	3,836.2	1.47	0.00	-1.47
11,189.0	90.60	88.30	7,043.1	-345.5	3,915.7	3,930.8	1.84	0.95	-1.58
11,284.0	91.60	88.80	7,041.3	-343.1	4,010.6	4,025.2	1.18	1.05	0.53
11,379.0	90.70	87.40	7,039.3	-340.0	4,105.6	4,119.6	1.75	-0.95	-1.47
11,442.0	91.10	86.50	7,038.4	-336.6	4,168.5	4,182.0	1.56	0.63	-1.43
11,499.6	91.10	86.50	7,037.2	-333.1	4,226.0	4,239.1	0.00	0.00	0.00
BHL 1395'FNL & 500'FEL, SEC.28									
11,500.0	91.10	86.50	7,037.2	-333.1	4,226.3	4,239.4	0.00	0.00	0.00

<b>Company:</b>	PETROLEUM DEVELOPMENT CORP DJ Basin	<b>Local Co-ordinate Reference:</b>	Well Wiedeman 28F-202
<b>Project:</b>	SEC.28-T4N-R66W	<b>TVD Reference:</b>	WELL @ 4775.0ft (Ensign Rig #134 RKB - 13')
<b>Site:</b>	Wiedeman 4N66W28F - East Pad Sec.28-T4N-R66W	<b>MD Reference:</b>	WELL @ 4775.0ft (Ensign Rig #134 RKB - 13')
<b>Well:</b>	Wiedeman 28F-202	<b>North Reference:</b>	True
<b>Wellbore:</b>	Wellbore #1	<b>Survey Calculation Method:</b>	Minimum Curvature
<b>Design:</b>	Wellbore #1	<b>Database:</b>	US_EDM

Design Targets									
Target Name - hit/miss target - Shape	Dip Angle (°)	Dip Dir. (°)	TVD (ft)	+N/-S (ft)	+E/-W (ft)	Northing (usft)	Easting (usft)	Latitude	Longitude
SHL 1038'FNL & 540'FM - survey hits target center - Point	0.00	0.00	1.0	0.0	0.0	1,348,188.35	3,198,078.21	40.287000	-104.789970
BHL 1395'FNL & 500'FE - survey misses target center by 13.3ft at 11499.6ft MD (7037.2 TVD, -333.1 N, 4226.0 E) - Point	0.00	0.00	7,047.0	-342.1	4,226.7	1,347,880.13	3,202,307.33	40.286060	-104.774820

Casing Points				
Measured Depth (ft)	Vertical Depth (ft)	Name	Casing Diameter (")	Hole Diameter (")
7,587.9	7,071.9	7"	7	8-3/4

Survey Annotations				
Measured Depth (ft)	Vertical Depth (ft)	Local Coordinates +N/-S (ft)	+E/-W (ft)	Comment
7,858.0	7,082.3	-339.5	585.6	Deepest TVD Drilled - 7082.26' TVD

Checked By: \_\_\_\_\_ Approved By: \_\_\_\_\_ Date: \_\_\_\_\_