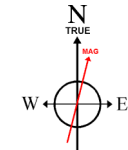


BAYSWATER E & P LLC

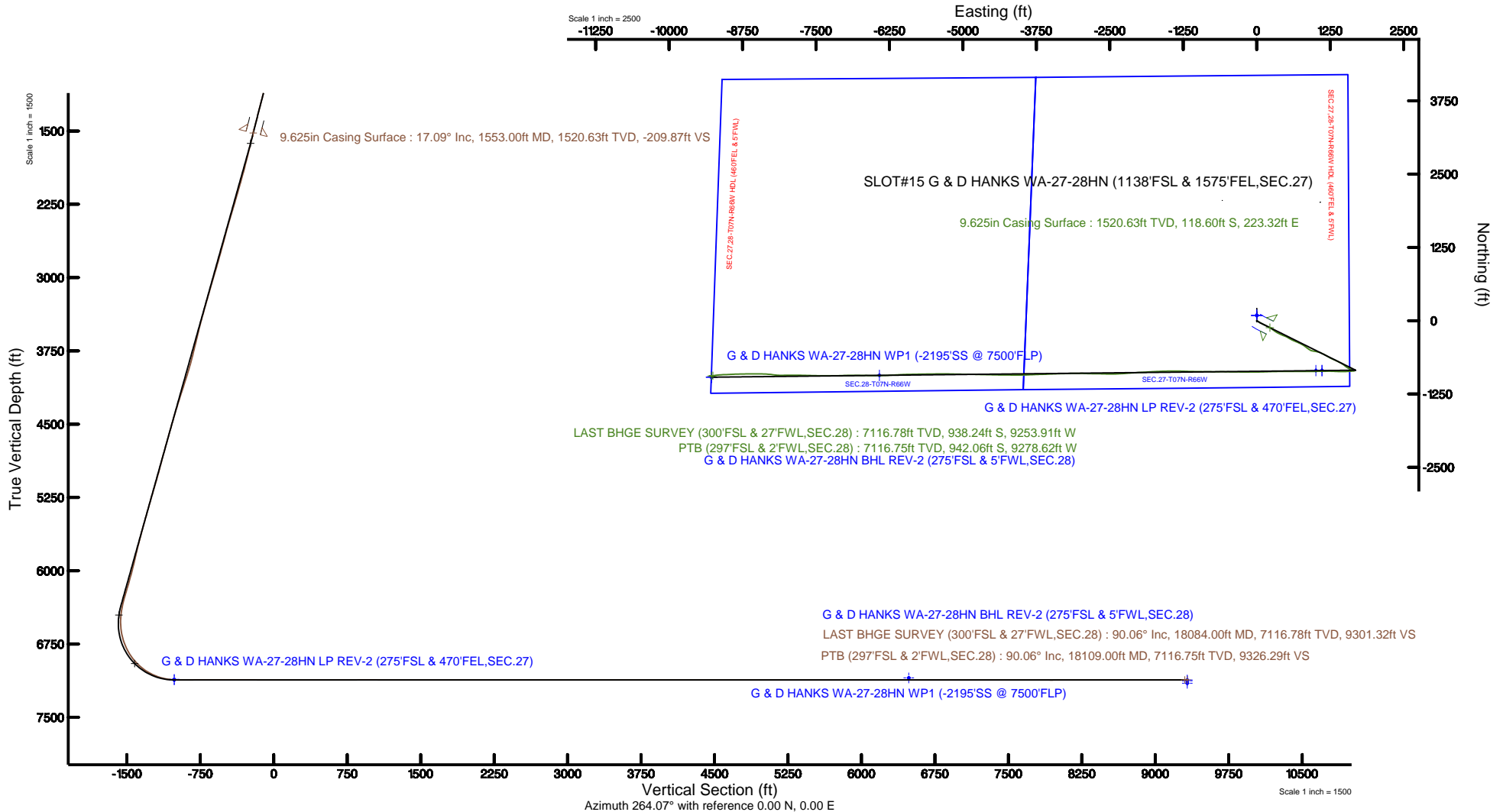


Location: COLORADO Slot: SLOT#15 G & D HANKS WA-27-28HN (1138'FSL & 1575'FEL,SEC.27)
Field: WELD COUNTY (NAD83/TRUE NORTH) Well: G & D HANKS WA-27-28HN
Facility: SEC.27-T07N-R66W Wellbore: G & D HANKS WA-27-28HN PWB

| | |
|---|--|
| Plot reference wellpath is G & D HANKS WA-27-28HN PWP (REV-D.0) | Grid System: NAD83 / Lambert Colorado SP, Northern Zone (501), US feet |
| True vertical depths are referenced to TRUE 38 (4876'GL + 25'KB @ 4901'RKB) (RKB) | North Reference: True north |
| Measured depths are referenced to TRUE 38 (4876'GL + 25'KB @ 4901'RKB) (RKB) | Scale: True distance |
| TRUE 38 (4876'GL + 25'KB @ 4901'RKB) (RKB) to Mean Sea Level: 4901 feet | Depths are in feet |
| Mean Sea Level to Ground level (At Slot: SLOT#15 G & D HANKS WA-27-28HN (1138'FSL & 1575'FEL,SEC.27)): 0 feet | Created by: bushjamh on 2018-06-20 |
| Coordinates are in feet referenced to Slot | Database: Denver |



BGGM (1900.0 to 2019.0) Dip: 66.93° Field: 52388 nT
Magnetic North is 8.31 degrees East of True North (at 5/11/2018)
To correct azimuth from Magnetic to True add 8.31 degrees



Actual Wellpath Report

G & D HANKS WA-27-28HN AWP

Page 1 of 9



REFERENCE WELLPATH IDENTIFICATION

| | | | |
|----------|--------------------------------|----------|---|
| Operator | BAYSWATER E & P LLC | Slot | SLOT#15 G & D HANKS WA-27-28HN (1138'FSL & 1575'FEL,SEC.27) |
| Area | COLORADO | Well | G & D HANKS WA-27-28HN |
| Field | WELD COUNTY (NAD83/TRUE NORTH) | Wellbore | G & D HANKS WA-27-28HN AWP |
| Facility | SEC.27-T07N-R66W | | |

REPORT SETUP INFORMATION

| | | | |
|---------------------|---|----------------------|--------------------------------------|
| Projection System | NAD83 / Lambert Colorado SP, Northern Zone (501), US feet | Software System | WellArchitect® 5.1 |
| North Reference | True | User | Bushjamh |
| Scale | 0.999970 | Report Generated | 6/20/2018 at 4:36:00 PM |
| Convergence at slot | 0.48° East | Database/Source file | Denver/G__D_HANKS_WA-27-28HN_AWP.xml |

WELLPATH LOCATION

| | Local coordinates | | Grid coordinates | | Geographic coordinates | |
|-----------------------|-------------------|----------|------------------|-----------------|------------------------|-----------------|
| | North[ft] | East[ft] | Easting[US ft] | Northing[US ft] | Latitude | Longitude |
| Slot Location | -210.21 | -0.56 | 3205704.35 | 1441092.33 | 40°32'30.631"N | 104°45'35.478"W |
| Facility Reference Pt | | | 3205703.16 | 1441302.53 | 40°32'32.708"N | 104°45'35.471"W |
| Field Reference Pt | | | 3174587.00 | 1430859.71 | 40°30'51.890"N | 104°52'19.470"W |

WELLPATH DATUM

| | | | |
|--------------------------|--|--|-------------------|
| Calculation method | Minimum curvature | TRUE 38 (4876'GL + 25'KB @ 4901'RKB) (RKB) to Facility Vertical Datum | 4901.00ft |
| Horizontal Reference Pt | Slot | TRUE 38 (4876'GL + 25'KB @ 4901'RKB) (RKB) to Mean Sea Level | 4901.00ft |
| Vertical Reference Pt | TRUE 38 (4876'GL + 25'KB @ 4901'RKB) (RKB) | TRUE 38 (4876'GL + 25'KB @ 4901'RKB) (RKB) to Ground Level at Slot (SLOT#15 G & D HANKS WA-27-28HN (1138'FSL & 1575'FEL,SEC.27)) | 4901.00ft |
| MD Reference Pt | TRUE 38 (4876'GL + 25'KB @ 4901'RKB) (RKB) | Section Origin | N 0.00, E 0.00 ft |
| Field Vertical Reference | Mean Sea Level | Section Azimuth | 264.20° |

Actual Wellpath Report

G & D HANKS WA-27-28HN AWP

Page 2 of 9

REFERENCE WELLPATH IDENTIFICATION

| | | | |
|----------|--------------------------------|----------|---|
| Operator | BAYSWATER E & P LLC | Slot | SLOT#15 G & D HANKS WA-27-28HN (1138'FSL & 1575'FEL,SEC.27) |
| Area | COLORADO | Well | G & D HANKS WA-27-28HN |
| Field | WELD COUNTY (NAD83/TRUE NORTH) | Wellbore | G & D HANKS WA-27-28HN AWB |
| Facility | SEC.27-T07N-R66W | | |

WELLPATH DATA (192 stations) † = interpolated/extrapolated station

| MD [ft] | Inclination [°] | Azimuth [°] | TVD [ft] | Vert Sect [ft] | North [ft] | East [ft] | Latitude | Longitude | DLS [°/100ft] | Comments |
|------------|--------------------|----------------|-------------|-------------------|---------------|--------------|----------------|-----------------|------------------|----------|
| 0.00† | 0.000 | 337.530 | 0.00 | 0.00 | 0.00 | 0.00 | 40°32'30.631"N | 104°45'35.478"W | 0.00 | |
| 25.00 | 0.000 | 337.530 | 25.00 | 0.00 | 0.00 | 0.00 | 40°32'30.631"N | 104°45'35.478"W | 0.00 | |
| 232.00 | 0.560 | 337.530 | 232.00 | 0.29 | 0.93 | -0.39 | 40°32'30.640"N | 104°45'35.483"W | 0.27 | |
| 326.00 | 0.990 | 133.260 | 325.99 | -0.11 | 0.80 | 0.03 | 40°32'30.639"N | 104°45'35.478"W | 1.61 | |
| 421.00 | 2.510 | 129.300 | 420.95 | -2.12 | -1.08 | 2.24 | 40°32'30.621"N | 104°45'35.449"W | 1.60 | |
| 515.00 | 4.300 | 120.610 | 514.78 | -6.41 | -4.18 | 6.86 | 40°32'30.590"N | 104°45'35.389"W | 1.98 | |
| 610.00 | 6.510 | 122.950 | 609.35 | -13.47 | -8.92 | 14.45 | 40°32'30.543"N | 104°45'35.291"W | 2.34 | |
| 705.00 | 8.730 | 120.850 | 703.50 | -23.46 | -15.55 | 25.16 | 40°32'30.478"N | 104°45'35.152"W | 2.35 | |
| 799.00 | 10.810 | 121.810 | 796.14 | -36.17 | -23.85 | 38.77 | 40°32'30.396"N | 104°45'34.976"W | 2.22 | |
| 894.00 | 13.270 | 119.500 | 889.04 | -52.13 | -33.92 | 55.84 | 40°32'30.296"N | 104°45'34.755"W | 2.64 | |
| 988.00 | 15.330 | 117.080 | 980.12 | -71.37 | -44.89 | 76.29 | 40°32'30.188"N | 104°45'34.490"W | 2.28 | |
| 1083.00 | 17.430 | 115.710 | 1071.26 | -94.05 | -56.78 | 100.30 | 40°32'30.070"N | 104°45'34.179"W | 2.25 | |
| 1177.00 | 17.200 | 116.030 | 1161.00 | -117.86 | -68.99 | 125.47 | 40°32'29.950"N | 104°45'33.853"W | 0.26 | |
| 1272.00 | 17.580 | 117.060 | 1251.66 | -141.85 | -81.68 | 150.87 | 40°32'29.824"N | 104°45'33.524"W | 0.51 | |
| 1365.00 | 16.520 | 117.720 | 1340.57 | -164.67 | -94.22 | 175.08 | 40°32'29.700"N | 104°45'33.210"W | 1.16 | |
| 1460.00 | 16.830 | 116.250 | 1431.58 | -187.59 | -106.58 | 199.37 | 40°32'29.578"N | 104°45'32.896"W | 0.55 | |
| 1509.00 | 16.550 | 115.730 | 1478.51 | -199.55 | -112.75 | 212.02 | 40°32'29.517"N | 104°45'32.732"W | 0.65 | |
| 1602.00 | 17.740 | 122.350 | 1567.39 | -221.98 | -126.08 | 235.93 | 40°32'29.385"N | 104°45'32.422"W | 2.46 | |
| 1696.00 | 18.340 | 128.040 | 1656.77 | -243.91 | -142.86 | 259.67 | 40°32'29.220"N | 104°45'32.115"W | 1.98 | |
| 1791.00 | 18.830 | 127.130 | 1746.82 | -265.92 | -161.32 | 283.67 | 40°32'29.037"N | 104°45'31.804"W | 0.60 | |
| 1885.00 | 18.720 | 124.980 | 1835.82 | -288.45 | -179.13 | 308.12 | 40°32'28.861"N | 104°45'31.487"W | 0.75 | |
| 1980.00 | 18.520 | 121.100 | 1925.85 | -312.06 | -195.66 | 333.53 | 40°32'28.698"N | 104°45'31.158"W | 1.32 | |
| 2075.00 | 18.610 | 117.360 | 2015.91 | -336.82 | -210.42 | 359.92 | 40°32'28.552"N | 104°45'30.816"W | 1.26 | |
| 2170.00 | 18.510 | 115.900 | 2105.97 | -362.34 | -223.98 | 386.94 | 40°32'28.418"N | 104°45'30.466"W | 0.50 | |
| 2264.00 | 18.690 | 114.240 | 2195.06 | -388.07 | -236.68 | 414.10 | 40°32'28.292"N | 104°45'30.114"W | 0.59 | |
| 2358.00 | 18.480 | 113.280 | 2284.16 | -414.13 | -248.75 | 441.52 | 40°32'28.173"N | 104°45'29.759"W | 0.39 | |
| 2453.00 | 18.480 | 110.000 | 2374.26 | -440.85 | -259.85 | 469.50 | 40°32'28.063"N | 104°45'29.397"W | 1.09 | |
| 2547.00 | 18.390 | 113.840 | 2463.44 | -467.15 | -270.94 | 497.06 | 40°32'27.954"N | 104°45'29.040"W | 1.30 | |
| 2642.00 | 18.330 | 120.370 | 2553.61 | -492.24 | -284.55 | 523.66 | 40°32'27.819"N | 104°45'28.695"W | 2.16 | |
| 2737.00 | 18.340 | 121.030 | 2643.79 | -516.26 | -299.81 | 549.35 | 40°32'27.669"N | 104°45'28.363"W | 0.22 | |

Actual Wellpath Report

G & D HANKS WA-27-28HN AWP

Page 3 of 9

REFERENCE WELLPATH IDENTIFICATION

| | | | |
|----------|--------------------------------|----------|---|
| Operator | BAYSWATER E & P LLC | Slot | SLOT#15 G & D HANKS WA-27-28HN (1138'FSL & 1575'FEL,SEC.27) |
| Area | COLORADO | Well | G & D HANKS WA-27-28HN |
| Field | WELD COUNTY (NAD83/TRUE NORTH) | Wellbore | G & D HANKS WA-27-28HN AWB |
| Facility | SEC.27-T07N-R66W | | |

WELLPATH DATA (192 stations)

| MD [ft] | Inclination [°] | Azimuth [°] | TVD [ft] | Vert Sect [ft] | North [ft] | East [ft] | Latitude | Longitude | DLS [°/100ft] | Comments |
|------------|--------------------|----------------|-------------|-------------------|---------------|--------------|----------------|-----------------|------------------|----------|
| 2831.00 | 18.540 | 118.620 | 2732.97 | -540.43 | -314.59 | 575.15 | 40°32'27.523"N | 104°45'28.028"W | 0.84 | |
| 2926.00 | 18.410 | 115.980 | 2823.07 | -565.64 | -328.39 | 601.89 | 40°32'27.386"N | 104°45'27.682"W | 0.89 | |
| 3021.00 | 18.460 | 113.650 | 2913.20 | -591.49 | -341.00 | 629.15 | 40°32'27.262"N | 104°45'27.329"W | 0.78 | |
| 3115.00 | 18.400 | 111.470 | 3002.38 | -617.64 | -352.40 | 656.59 | 40°32'27.149"N | 104°45'26.974"W | 0.74 | |
| 3210.00 | 18.340 | 113.690 | 3092.54 | -643.97 | -363.89 | 684.23 | 40°32'27.035"N | 104°45'26.616"W | 0.74 | |
| 3304.00 | 18.250 | 115.430 | 3181.79 | -669.43 | -376.15 | 711.07 | 40°32'26.914"N | 104°45'26.268"W | 0.59 | |
| 3399.00 | 18.540 | 115.090 | 3271.93 | -695.12 | -388.95 | 738.18 | 40°32'26.788"N | 104°45'25.917"W | 0.33 | |
| 3494.00 | 18.380 | 118.460 | 3362.05 | -720.46 | -402.49 | 765.03 | 40°32'26.654"N | 104°45'25.569"W | 1.14 | |
| 3588.00 | 18.370 | 120.680 | 3451.26 | -744.62 | -417.11 | 790.79 | 40°32'26.509"N | 104°45'25.235"W | 0.74 | |
| 3683.00 | 18.450 | 127.030 | 3541.40 | -767.68 | -433.80 | 815.67 | 40°32'26.344"N | 104°45'24.913"W | 2.11 | |
| 3777.00 | 18.490 | 127.890 | 3630.56 | -789.37 | -451.91 | 839.31 | 40°32'26.166"N | 104°45'24.607"W | 0.29 | |
| 3872.00 | 18.300 | 126.660 | 3720.71 | -811.26 | -470.07 | 863.16 | 40°32'25.986"N | 104°45'24.298"W | 0.45 | |
| 3967.00 | 18.460 | 125.480 | 3810.86 | -833.57 | -487.71 | 887.37 | 40°32'25.812"N | 104°45'23.984"W | 0.43 | |
| 4062.00 | 18.400 | 116.060 | 3901.01 | -857.62 | -503.03 | 913.10 | 40°32'25.660"N | 104°45'23.651"W | 3.13 | |
| 4157.00 | 18.530 | 104.450 | 3991.15 | -884.52 | -513.38 | 941.19 | 40°32'25.558"N | 104°45'23.287"W | 3.87 | |
| 4251.00 | 18.470 | 98.840 | 4080.30 | -912.94 | -519.40 | 970.37 | 40°32'25.499"N | 104°45'22.909"W | 1.89 | |
| 4346.00 | 18.400 | 99.840 | 4170.42 | -941.94 | -524.27 | 1000.02 | 40°32'25.450"N | 104°45'22.525"W | 0.34 | |
| 4441.00 | 18.230 | 102.500 | 4260.61 | -970.49 | -530.05 | 1029.30 | 40°32'25.393"N | 104°45'22.146"W | 0.90 | |
| 4536.00 | 18.340 | 108.190 | 4350.82 | -998.26 | -537.94 | 1058.01 | 40°32'25.315"N | 104°45'21.774"W | 1.88 | |
| 4631.00 | 18.260 | 112.510 | 4441.02 | -1025.02 | -548.30 | 1085.96 | 40°32'25.213"N | 104°45'21.412"W | 1.43 | |
| 4724.00 | 18.450 | 115.540 | 4529.29 | -1050.41 | -560.22 | 1112.69 | 40°32'25.095"N | 104°45'21.066"W | 1.05 | |
| 4819.00 | 18.620 | 117.910 | 4619.37 | -1075.87 | -573.80 | 1139.66 | 40°32'24.961"N | 104°45'20.717"W | 0.81 | |
| 4913.00 | 18.300 | 118.180 | 4708.53 | -1100.59 | -587.80 | 1165.93 | 40°32'24.823"N | 104°45'20.377"W | 0.35 | |
| 5008.00 | 18.390 | 119.040 | 4798.70 | -1125.26 | -602.11 | 1192.18 | 40°32'24.681"N | 104°45'20.037"W | 0.30 | |
| 5102.00 | 18.380 | 121.010 | 4887.90 | -1149.30 | -616.95 | 1217.84 | 40°32'24.535"N | 104°45'19.704"W | 0.66 | |
| 5197.00 | 18.300 | 119.070 | 4978.08 | -1173.53 | -631.91 | 1243.72 | 40°32'24.387"N | 104°45'19.369"W | 0.65 | |
| 5291.00 | 18.390 | 115.540 | 5067.31 | -1198.30 | -645.47 | 1269.99 | 40°32'24.253"N | 104°45'19.029"W | 1.19 | |
| 5386.00 | 18.410 | 112.400 | 5157.45 | -1224.32 | -657.65 | 1297.39 | 40°32'24.132"N | 104°45'18.674"W | 1.04 | |
| 5480.00 | 18.570 | 113.500 | 5246.60 | -1250.46 | -669.28 | 1324.84 | 40°32'24.017"N | 104°45'18.318"W | 0.41 | |
| 5575.00 | 18.350 | 115.590 | 5336.71 | -1276.41 | -681.77 | 1352.20 | 40°32'23.894"N | 104°45'17.964"W | 0.73 | |

Actual Wellpath Report

G & D HANKS WA-27-28HN AWP

Page 4 of 9



REFERENCE WELLPATH IDENTIFICATION

| | | | |
|----------|--------------------------------|----------|---|
| Operator | BAYSWATER E & P LLC | Slot | SLOT#15 G & D HANKS WA-27-28HN (1138'FSL & 1575'FEL,SEC.27) |
| Area | COLORADO | Well | G & D HANKS WA-27-28HN |
| Field | WELD COUNTY (NAD83/TRUE NORTH) | Wellbore | G & D HANKS WA-27-28HN AWB |
| Facility | SEC.27-T07N-R66W | | |

WELLPATH DATA (192 stations)

| MD [ft] | Inclination [°] | Azimuth [°] | TVD [ft] | Vert Sect [ft] | North [ft] | East [ft] | Latitude | Longitude | DLS [°/100ft] | Comments |
|------------|--------------------|----------------|-------------|-------------------|---------------|--------------|----------------|-----------------|------------------|----------|
| 5669.00 | 18.290 | 116.860 | 5425.95 | -1301.46 | -694.82 | 1378.70 | 40°32'23.765"N | 104°45'17.621"W | 0.43 | |
| 5763.00 | 18.380 | 117.510 | 5515.18 | -1326.27 | -708.33 | 1405.00 | 40°32'23.631"N | 104°45'17.280"W | 0.24 | |
| 5858.00 | 18.310 | 119.360 | 5605.35 | -1350.98 | -722.57 | 1431.29 | 40°32'23.491"N | 104°45'16.940"W | 0.62 | |
| 5952.00 | 18.230 | 121.490 | 5694.61 | -1374.75 | -737.49 | 1456.70 | 40°32'23.343"N | 104°45'16.611"W | 0.72 | |
| 6047.00 | 18.010 | 125.890 | 5784.90 | -1397.55 | -753.86 | 1481.27 | 40°32'23.182"N | 104°45'16.292"W | 1.46 | |
| 6142.00 | 18.490 | 131.360 | 5875.13 | -1418.76 | -772.42 | 1504.48 | 40°32'22.998"N | 104°45'15.992"W | 1.87 | |
| 6236.00 | 18.630 | 126.020 | 5964.25 | -1440.08 | -791.10 | 1527.81 | 40°32'22.814"N | 104°45'15.690"W | 1.81 | |
| 6331.00 | 18.580 | 120.050 | 6054.29 | -1463.66 | -807.61 | 1553.19 | 40°32'22.650"N | 104°45'15.361"W | 2.00 | |
| 6424.00 | 18.650 | 115.330 | 6142.43 | -1488.40 | -821.39 | 1579.45 | 40°32'22.514"N | 104°45'15.021"W | 1.62 | |
| 6519.00 | 18.530 | 112.560 | 6232.48 | -1514.69 | -833.68 | 1607.12 | 40°32'22.393"N | 104°45'14.662"W | 0.94 | |
| 6612.00 | 16.360 | 113.080 | 6321.20 | -1539.17 | -844.49 | 1632.82 | 40°32'22.286"N | 104°45'14.329"W | 2.34 | |
| 6707.00 | 9.320 | 105.600 | 6413.77 | -1558.07 | -851.81 | 1652.57 | 40°32'22.214"N | 104°45'14.074"W | 7.60 | |
| 6802.00 | 1.170 | 69.130 | 6508.30 | -1566.18 | -853.54 | 1660.90 | 40°32'22.197"N | 104°45'13.966"W | 8.85 | |
| 6897.00 | 6.820 | 255.220 | 6603.11 | -1561.54 | -854.63 | 1656.34 | 40°32'22.186"N | 104°45'14.025"W | 8.40 | |
| 6991.00 | 16.360 | 261.960 | 6695.09 | -1542.76 | -857.91 | 1637.79 | 40°32'22.153"N | 104°45'14.265"W | 10.23 | |
| 7086.00 | 23.990 | 266.400 | 6784.20 | -1510.04 | -861.00 | 1605.22 | 40°32'22.123"N | 104°45'14.687"W | 8.19 | |
| 7181.00 | 34.120 | 265.330 | 6867.14 | -1463.98 | -864.39 | 1559.27 | 40°32'22.089"N | 104°45'15.282"W | 10.68 | |
| 7275.00 | 43.370 | 268.070 | 6940.38 | -1405.29 | -867.63 | 1500.61 | 40°32'22.057"N | 104°45'16.042"W | 10.01 | |
| 7369.00 | 52.800 | 270.820 | 7003.11 | -1335.74 | -868.19 | 1430.75 | 40°32'22.052"N | 104°45'16.947"W | 10.26 | |
| 7464.00 | 63.130 | 272.840 | 7053.43 | -1256.04 | -865.54 | 1350.38 | 40°32'22.078"N | 104°45'17.988"W | 11.02 | |
| 7558.00 | 72.080 | 271.240 | 7089.21 | -1170.03 | -862.49 | 1263.61 | 40°32'22.108"N | 104°45'19.112"W | 9.65 | |
| 7653.00 | 82.340 | 268.820 | 7110.22 | -1077.99 | -862.48 | 1171.10 | 40°32'22.108"N | 104°45'20.310"W | 11.08 | |
| 7747.00 | 90.090 | 269.330 | 7116.42 | -984.60 | -863.99 | 1077.39 | 40°32'22.094"N | 104°45'21.524"W | 8.26 | |
| 7842.00 | 90.120 | 269.580 | 7116.24 | -890.00 | -864.89 | 982.39 | 40°32'22.085"N | 104°45'22.754"W | 0.27 | |
| 7936.00 | 90.090 | 269.740 | 7116.07 | -796.43 | -865.45 | 888.39 | 40°32'22.079"N | 104°45'23.971"W | 0.17 | |
| 8030.00 | 90.120 | 269.970 | 7115.90 | -702.89 | -865.69 | 794.39 | 40°32'22.077"N | 104°45'25.189"W | 0.25 | |
| 8125.00 | 89.850 | 270.670 | 7115.92 | -608.43 | -865.16 | 699.40 | 40°32'22.082"N | 104°45'26.419"W | 0.79 | |
| 8220.00 | 89.970 | 270.110 | 7116.07 | -513.98 | -864.51 | 604.40 | 40°32'22.089"N | 104°45'27.650"W | 0.60 | |
| 8314.00 | 90.030 | 269.750 | 7116.07 | -420.45 | -864.63 | 510.40 | 40°32'22.087"N | 104°45'28.867"W | 0.39 | |
| 8408.00 | 90.030 | 269.190 | 7116.02 | -326.85 | -865.50 | 416.40 | 40°32'22.079"N | 104°45'30.085"W | 0.60 | |

Actual Wellpath Report

G & D HANKS WA-27-28HN AWP

Page 5 of 9

REFERENCE WELLPATH IDENTIFICATION

| | | | |
|----------|--------------------------------|----------|---|
| Operator | BAYSWATER E & P LLC | Slot | SLOT#15 G & D HANKS WA-27-28HN (1138'FSL & 1575'FEL,SEC.27) |
| Area | COLORADO | Well | G & D HANKS WA-27-28HN |
| Field | WELD COUNTY (NAD83/TRUE NORTH) | Wellbore | G & D HANKS WA-27-28HN AWB |
| Facility | SEC.27-T07N-R66W | | |

WELLPATH DATA (192 stations)

| MD [ft] | Inclination [°] | Azimuth [°] | TVD [ft] | Vert Sect [ft] | North [ft] | East [ft] | Latitude | Longitude | DLS [°/100ft] | Comments |
|------------|--------------------|----------------|-------------|-------------------|---------------|--------------|----------------|-----------------|------------------|----------|
| 8503.00 | 89.940 | 269.040 | 7116.05 | -232.20 | -866.96 | 321.42 | 40°32'22.064"N | 104°45'31.315"W | 0.18 | |
| 8598.00 | 89.910 | 267.860 | 7116.17 | -137.46 | -869.53 | 226.45 | 40°32'22.039"N | 104°45'32.545"W | 1.24 | |
| 8692.00 | 89.940 | 268.240 | 7116.30 | -43.67 | -872.73 | 132.51 | 40°32'22.007"N | 104°45'33.762"W | 0.41 | |
| 8787.00 | 89.910 | 268.630 | 7116.42 | 51.07 | -875.33 | 37.54 | 40°32'21.982"N | 104°45'34.992"W | 0.41 | |
| 8882.00 | 90.060 | 270.130 | 7116.45 | 145.68 | -876.35 | -57.45 | 40°32'21.972"N | 104°45'36.222"W | 1.59 | |
| 8976.00 | 90.030 | 270.420 | 7116.37 | 239.15 | -875.90 | -151.45 | 40°32'21.976"N | 104°45'37.440"W | 0.31 | |
| 9071.00 | 90.030 | 270.480 | 7116.32 | 333.59 | -875.16 | -246.44 | 40°32'21.983"N | 104°45'38.670"W | 0.06 | |
| 9165.00 | 90.000 | 270.090 | 7116.30 | 427.06 | -874.69 | -340.44 | 40°32'21.988"N | 104°45'39.887"W | 0.42 | |
| 9259.00 | 90.060 | 271.290 | 7116.25 | 520.45 | -873.56 | -434.43 | 40°32'21.999"N | 104°45'41.105"W | 1.28 | |
| 9354.00 | 89.940 | 271.650 | 7116.25 | 614.69 | -871.12 | -529.40 | 40°32'22.023"N | 104°45'42.335"W | 0.40 | |
| 9449.00 | 90.000 | 269.070 | 7116.30 | 709.13 | -870.52 | -624.39 | 40°32'22.029"N | 104°45'43.565"W | 2.72 | |
| 9543.00 | 90.120 | 270.300 | 7116.20 | 802.70 | -871.04 | -718.39 | 40°32'22.024"N | 104°45'44.783"W | 1.31 | |
| 9637.00 | 90.060 | 270.820 | 7116.05 | 896.12 | -870.12 | -812.39 | 40°32'22.033"N | 104°45'46.000"W | 0.56 | |
| 9732.00 | 89.940 | 270.740 | 7116.05 | 990.50 | -868.83 | -907.38 | 40°32'22.046"N | 104°45'47.230"W | 0.15 | |
| 9826.00 | 89.940 | 270.750 | 7116.15 | 1083.88 | -867.61 | -1001.37 | 40°32'22.058"N | 104°45'48.448"W | 0.01 | |
| 9921.00 | 90.000 | 271.120 | 7116.20 | 1178.23 | -866.06 | -1096.36 | 40°32'22.073"N | 104°45'49.678"W | 0.39 | |
| 10016.00 | 89.940 | 271.960 | 7116.25 | 1272.45 | -863.50 | -1191.32 | 40°32'22.098"N | 104°45'50.908"W | 0.89 | |
| 10110.00 | 90.060 | 271.610 | 7116.25 | 1365.63 | -860.57 | -1285.27 | 40°32'22.127"N | 104°45'52.125"W | 0.39 | |
| 10205.00 | 89.910 | 270.490 | 7116.28 | 1459.95 | -858.83 | -1380.26 | 40°32'22.144"N | 104°45'53.355"W | 1.19 | |
| 10300.00 | 90.060 | 269.190 | 7116.30 | 1554.49 | -859.10 | -1475.25 | 40°32'22.142"N | 104°45'54.586"W | 1.38 | |
| 10394.00 | 89.970 | 268.320 | 7116.28 | 1648.19 | -861.14 | -1569.23 | 40°32'22.121"N | 104°45'55.803"W | 0.93 | |
| 10489.00 | 90.030 | 267.260 | 7116.28 | 1743.00 | -864.80 | -1664.16 | 40°32'22.085"N | 104°45'57.032"W | 1.12 | |
| 10583.00 | 90.000 | 267.020 | 7116.25 | 1836.88 | -869.49 | -1758.04 | 40°32'22.039"N | 104°45'58.248"W | 0.26 | |
| 10678.00 | 90.030 | 266.850 | 7116.23 | 1931.77 | -874.57 | -1852.91 | 40°32'21.988"N | 104°45'59.477"W | 0.18 | |
| 10773.00 | 89.970 | 266.780 | 7116.23 | 2026.67 | -879.85 | -1947.76 | 40°32'21.936"N | 104°46'00.706"W | 0.10 | |
| 10867.00 | 89.940 | 266.030 | 7116.30 | 2120.60 | -885.75 | -2041.57 | 40°32'21.878"N | 104°46'01.921"W | 0.80 | |
| 10962.00 | 89.940 | 265.810 | 7116.40 | 2215.56 | -892.51 | -2136.33 | 40°32'21.811"N | 104°46'03.148"W | 0.23 | |
| 11057.00 | 90.000 | 265.680 | 7116.45 | 2310.53 | -899.55 | -2231.07 | 40°32'21.741"N | 104°46'04.375"W | 0.15 | |
| 11152.00 | 90.090 | 267.280 | 7116.37 | 2405.45 | -905.39 | -2325.89 | 40°32'21.684"N | 104°46'05.603"W | 1.69 | |
| 11247.00 | 89.850 | 268.350 | 7116.42 | 2500.26 | -909.01 | -2420.82 | 40°32'21.648"N | 104°46'06.833"W | 1.15 | |

Actual Wellpath Report

G & D HANKS WA-27-28HN AWP

Page 6 of 9

REFERENCE WELLPATH IDENTIFICATION

| | | | |
|----------|--------------------------------|----------|---|
| Operator | BAYSWATER E & P LLC | Slot | SLOT#15 G & D HANKS WA-27-28HN (1138'FSL & 1575'FEL,SEC.27) |
| Area | COLORADO | Well | G & D HANKS WA-27-28HN |
| Field | WELD COUNTY (NAD83/TRUE NORTH) | Wellbore | G & D HANKS WA-27-28HN AWB |
| Facility | SEC.27-T07N-R66W | | |

WELLPATH DATA (192 stations)

| MD [ft] | Inclination [°] | Azimuth [°] | TVD [ft] | Vert Sect [ft] | North [ft] | East [ft] | Latitude | Longitude | DLS [°/100ft] | Comments |
|------------|--------------------|----------------|-------------|-------------------|---------------|--------------|----------------|-----------------|------------------|----------|
| 11342.00 | 89.970 | 270.960 | 7116.57 | 2594.82 | -909.58 | -2515.81 | 40°32'21.642"N | 104°46'08.063"W | 2.75 | |
| 11437.00 | 90.060 | 271.920 | 7116.55 | 2689.06 | -907.19 | -2610.78 | 40°32'21.665"N | 104°46'09.293"W | 1.01 | |
| 11531.00 | 89.970 | 270.350 | 7116.52 | 2782.37 | -905.33 | -2704.76 | 40°32'21.684"N | 104°46'10.510"W | 1.67 | |
| 11626.00 | 90.000 | 271.000 | 7116.55 | 2876.76 | -904.21 | -2799.75 | 40°32'21.695"N | 104°46'11.741"W | 0.68 | |
| 11721.00 | 89.910 | 272.290 | 7116.62 | 2970.96 | -901.49 | -2894.71 | 40°32'21.722"N | 104°46'12.971"W | 1.36 | |
| 11816.00 | 89.970 | 270.400 | 7116.72 | 3065.22 | -899.26 | -2989.68 | 40°32'21.744"N | 104°46'14.201"W | 1.99 | |
| 11911.00 | 90.030 | 269.860 | 7116.72 | 3159.71 | -899.04 | -3084.68 | 40°32'21.746"N | 104°46'15.431"W | 0.57 | |
| 12006.00 | 89.940 | 269.080 | 7116.75 | 3254.31 | -899.92 | -3179.67 | 40°32'21.737"N | 104°46'16.661"W | 0.83 | |
| 12099.00 | 90.000 | 268.260 | 7116.80 | 3347.03 | -902.08 | -3272.65 | 40°32'21.715"N | 104°46'17.866"W | 0.88 | |
| 12194.00 | 90.060 | 268.320 | 7116.75 | 3441.79 | -904.91 | -3367.60 | 40°32'21.687"N | 104°46'19.096"W | 0.09 | |
| 12288.00 | 89.970 | 267.820 | 7116.72 | 3535.57 | -908.08 | -3461.55 | 40°32'21.656"N | 104°46'20.312"W | 0.54 | |
| 12383.00 | 90.000 | 267.560 | 7116.75 | 3630.40 | -911.91 | -3556.47 | 40°32'21.618"N | 104°46'21.542"W | 0.28 | |
| 12478.00 | 90.060 | 268.640 | 7116.70 | 3725.17 | -915.06 | -3651.42 | 40°32'21.586"N | 104°46'22.772"W | 1.14 | |
| 12572.00 | 89.970 | 268.050 | 7116.67 | 3818.93 | -917.77 | -3745.38 | 40°32'21.560"N | 104°46'23.989"W | 0.63 | |
| 12667.00 | 89.910 | 266.950 | 7116.77 | 3913.77 | -921.92 | -3840.29 | 40°32'21.518"N | 104°46'25.218"W | 1.16 | |
| 12762.00 | 90.000 | 268.260 | 7116.85 | 4008.60 | -925.89 | -3935.20 | 40°32'21.479"N | 104°46'26.447"W | 1.38 | |
| 12856.00 | 90.030 | 269.590 | 7116.82 | 4102.28 | -927.65 | -4029.18 | 40°32'21.461"N | 104°46'27.664"W | 1.42 | |
| 12951.00 | 90.000 | 270.480 | 7116.80 | 4196.79 | -927.59 | -4124.18 | 40°32'21.462"N | 104°46'28.895"W | 0.94 | |
| 13045.00 | 90.000 | 270.490 | 7116.80 | 4290.22 | -926.79 | -4218.18 | 40°32'21.470"N | 104°46'30.112"W | 0.01 | |
| 13139.00 | 90.000 | 270.510 | 7116.80 | 4383.65 | -925.97 | -4312.18 | 40°32'21.478"N | 104°46'31.330"W | 0.02 | |
| 13234.00 | 89.970 | 270.820 | 7116.82 | 4478.05 | -924.87 | -4407.17 | 40°32'21.488"N | 104°46'32.560"W | 0.33 | |
| 13329.00 | 90.000 | 271.370 | 7116.85 | 4572.36 | -923.06 | -4502.15 | 40°32'21.506"N | 104°46'33.790"W | 0.58 | |
| 13423.00 | 90.060 | 271.140 | 7116.80 | 4665.65 | -921.00 | -4596.13 | 40°32'21.526"N | 104°46'35.008"W | 0.25 | |
| 13518.00 | 90.030 | 271.220 | 7116.72 | 4759.95 | -919.04 | -4691.11 | 40°32'21.545"N | 104°46'36.238"W | 0.09 | |
| 13612.00 | 90.030 | 271.560 | 7116.67 | 4853.21 | -916.76 | -4785.08 | 40°32'21.568"N | 104°46'37.455"W | 0.36 | |
| 13707.00 | 90.060 | 271.130 | 7116.60 | 4947.47 | -914.53 | -4880.05 | 40°32'21.590"N | 104°46'38.685"W | 0.45 | |
| 13801.00 | 90.060 | 270.730 | 7116.50 | 5040.82 | -913.01 | -4974.04 | 40°32'21.604"N | 104°46'39.902"W | 0.43 | |
| 13896.00 | 89.940 | 270.770 | 7116.50 | 5135.21 | -911.76 | -5069.03 | 40°32'21.617"N | 104°46'41.133"W | 0.13 | |
| 13990.00 | 90.000 | 271.550 | 7116.55 | 5228.51 | -909.86 | -5163.01 | 40°32'21.635"N | 104°46'42.350"W | 0.83 | |
| 14085.00 | 90.000 | 270.920 | 7116.55 | 5322.80 | -907.81 | -5257.99 | 40°32'21.655"N | 104°46'43.580"W | 0.66 | |

Actual Wellpath Report

G & D HANKS WA-27-28HN AWP

Page 7 of 9

REFERENCE WELLPATH IDENTIFICATION

| | | | |
|----------|--------------------------------|----------|---|
| Operator | BAYSWATER E & P LLC | Slot | SLOT#15 G & D HANKS WA-27-28HN (1138'FSL & 1575'FEL,SEC.27) |
| Area | COLORADO | Well | G & D HANKS WA-27-28HN |
| Field | WELD COUNTY (NAD83/TRUE NORTH) | Wellbore | G & D HANKS WA-27-28HN AWB |
| Facility | SEC.27-T07N-R66W | | |

WELLPATH DATA (192 stations)

| MD [ft] | Inclination [°] | Azimuth [°] | TVD [ft] | Vert Sect [ft] | North [ft] | East [ft] | Latitude | Longitude | DLS [°/100ft] | Comments |
|------------|--------------------|----------------|-------------|-------------------|---------------|--------------|----------------|-----------------|------------------|----------|
| 14179.00 | 89.970 | 269.690 | 7116.57 | 5416.26 | -907.31 | -5351.99 | 40°32'21.660"N | 104°46'44.798"W | 1.31 | |
| 14274.00 | 90.000 | 269.390 | 7116.60 | 5510.85 | -908.07 | -5446.98 | 40°32'21.652"N | 104°46'46.028"W | 0.32 | |
| 14369.00 | 89.970 | 269.360 | 7116.62 | 5605.46 | -909.11 | -5541.98 | 40°32'21.642"N | 104°46'47.258"W | 0.04 | |
| 14463.00 | 90.000 | 268.970 | 7116.65 | 5699.11 | -910.48 | -5635.97 | 40°32'21.628"N | 104°46'48.476"W | 0.42 | |
| 14558.00 | 90.060 | 269.360 | 7116.60 | 5793.76 | -911.86 | -5730.96 | 40°32'21.614"N | 104°46'49.706"W | 0.42 | |
| 14653.00 | 90.030 | 268.600 | 7116.52 | 5888.42 | -913.56 | -5825.94 | 40°32'21.597"N | 104°46'50.936"W | 0.80 | |
| 14748.00 | 89.910 | 269.040 | 7116.57 | 5983.12 | -915.51 | -5920.92 | 40°32'21.578"N | 104°46'52.166"W | 0.48 | |
| 14842.00 | 89.970 | 267.740 | 7116.67 | 6076.86 | -918.15 | -6014.88 | 40°32'21.551"N | 104°46'53.383"W | 1.38 | |
| 14937.00 | 89.970 | 266.370 | 7116.72 | 6171.74 | -923.03 | -6109.76 | 40°32'21.503"N | 104°46'54.612"W | 1.44 | |
| 15032.00 | 90.000 | 266.650 | 7116.75 | 6266.67 | -928.82 | -6204.58 | 40°32'21.445"N | 104°46'55.840"W | 0.30 | |
| 15126.00 | 90.000 | 268.010 | 7116.75 | 6360.52 | -933.20 | -6298.48 | 40°32'21.402"N | 104°46'57.057"W | 1.45 | |
| 15221.00 | 89.910 | 269.000 | 7116.82 | 6455.25 | -935.67 | -6393.44 | 40°32'21.377"N | 104°46'58.287"W | 1.05 | |
| 15315.00 | 89.910 | 269.880 | 7116.97 | 6548.86 | -936.59 | -6487.44 | 40°32'21.368"N | 104°46'59.504"W | 0.94 | |
| 15410.00 | 89.970 | 270.820 | 7117.07 | 6643.31 | -936.01 | -6582.43 | 40°32'21.373"N | 104°47'00.734"W | 0.99 | |
| 15504.00 | 90.060 | 271.060 | 7117.04 | 6736.66 | -934.47 | -6676.42 | 40°32'21.388"N | 104°47'01.952"W | 0.27 | |
| 15599.00 | 90.030 | 271.120 | 7116.97 | 6830.98 | -932.66 | -6771.40 | 40°32'21.406"N | 104°47'03.182"W | 0.07 | |
| 15694.00 | 89.880 | 270.210 | 7117.04 | 6925.37 | -931.56 | -6866.40 | 40°32'21.417"N | 104°47'04.412"W | 0.97 | |
| 15789.00 | 90.000 | 268.110 | 7117.14 | 7020.01 | -932.95 | -6961.38 | 40°32'21.403"N | 104°47'05.643"W | 2.21 | |
| 15884.00 | 90.000 | 268.250 | 7117.14 | 7114.78 | -935.97 | -7056.33 | 40°32'21.373"N | 104°47'06.872"W | 0.15 | |
| 15978.00 | 90.060 | 268.810 | 7117.09 | 7208.52 | -938.38 | -7150.30 | 40°32'21.348"N | 104°47'08.089"W | 0.60 | |
| 16072.00 | 89.970 | 270.200 | 7117.07 | 7302.11 | -939.19 | -7244.29 | 40°32'21.340"N | 104°47'09.307"W | 1.48 | |
| 16166.00 | 90.000 | 270.270 | 7117.09 | 7395.59 | -938.81 | -7338.29 | 40°32'21.344"N | 104°47'10.524"W | 0.08 | |
| 16260.00 | 89.910 | 270.620 | 7117.17 | 7489.03 | -938.08 | -7432.29 | 40°32'21.351"N | 104°47'11.742"W | 0.38 | |
| 16355.00 | 90.000 | 271.220 | 7117.24 | 7583.38 | -936.55 | -7527.28 | 40°32'21.365"N | 104°47'12.972"W | 0.64 | |
| 16450.00 | 89.940 | 271.270 | 7117.29 | 7677.66 | -934.49 | -7622.26 | 40°32'21.385"N | 104°47'14.202"W | 0.08 | |
| 16544.00 | 90.090 | 271.590 | 7117.27 | 7770.92 | -932.14 | -7716.23 | 40°32'21.408"N | 104°47'15.419"W | 0.38 | |
| 16639.00 | 89.880 | 270.700 | 7117.29 | 7865.22 | -930.24 | -7811.21 | 40°32'21.427"N | 104°47'16.650"W | 0.96 | |
| 16733.00 | 90.030 | 269.800 | 7117.37 | 7958.70 | -929.83 | -7905.20 | 40°32'21.431"N | 104°47'17.867"W | 0.97 | |
| 16828.00 | 90.000 | 269.400 | 7117.34 | 8053.27 | -930.50 | -8000.20 | 40°32'21.424"N | 104°47'19.097"W | 0.42 | |
| 16922.00 | 90.430 | 269.140 | 7116.99 | 8146.91 | -931.70 | -8094.19 | 40°32'21.412"N | 104°47'20.315"W | 0.53 | |

Actual Wellpath Report

G & D HANKS WA-27-28HN AWP

Page 8 of 9

REFERENCE WELLPATH IDENTIFICATION

| | | | |
|----------|--------------------------------|----------|---|
| Operator | BAYSWATER E & P LLC | Slot | SLOT#15 G & D HANKS WA-27-28HN (1138'FSL & 1575'FEL,SEC.27) |
| Area | COLORADO | Well | G & D HANKS WA-27-28HN |
| Field | WELD COUNTY (NAD83/TRUE NORTH) | Wellbore | G & D HANKS WA-27-28HN AWB |
| Facility | SEC.27-T07N-R66W | | |

WELLPATH DATA (192 stations)

| MD [ft] | Inclination [°] | Azimuth [°] | TVD [ft] | Vert Sect [ft] | North [ft] | East [ft] | Latitude | Longitude | DLS [°/100ft] | Comments |
|----------|-----------------|-------------|----------|----------------|------------|-----------|----------------|-----------------|---------------|--|
| 17017.00 | 90.060 | 277.190 | 7116.58 | 8240.67 | -926.45 | -8188.97 | 40°32'21.463"N | 104°47'21.542"W | 8.48 | |
| 17112.00 | 90.120 | 275.670 | 7116.43 | 8333.51 | -915.82 | -8283.37 | 40°32'21.568"N | 104°47'22.765"W | 1.60 | |
| 17206.00 | 89.970 | 272.270 | 7116.36 | 8426.13 | -909.31 | -8377.13 | 40°32'21.632"N | 104°47'23.980"W | 3.62 | |
| 17300.00 | 90.000 | 269.870 | 7116.38 | 8519.45 | -907.55 | -8471.11 | 40°32'21.649"N | 104°47'25.197"W | 2.55 | |
| 17395.00 | 90.000 | 269.890 | 7116.38 | 8613.99 | -907.75 | -8566.11 | 40°32'21.647"N | 104°47'26.427"W | 0.02 | |
| 17490.00 | 90.090 | 269.790 | 7116.31 | 8708.53 | -908.02 | -8661.11 | 40°32'21.644"N | 104°47'27.658"W | 0.14 | |
| 17585.00 | 90.000 | 268.990 | 7116.23 | 8803.14 | -909.03 | -8756.10 | 40°32'21.633"N | 104°47'28.888"W | 0.85 | |
| 17679.00 | 89.820 | 268.180 | 7116.38 | 8896.86 | -911.35 | -8850.07 | 40°32'21.610"N | 104°47'30.105"W | 0.88 | |
| 17774.00 | 89.880 | 266.620 | 7116.63 | 8991.71 | -915.66 | -8944.97 | 40°32'21.567"N | 104°47'31.334"W | 1.64 | |
| 17869.00 | 89.940 | 268.770 | 7116.78 | 9086.53 | -919.48 | -9039.89 | 40°32'21.529"N | 104°47'32.564"W | 2.26 | |
| 18084.00 | 90.060 | 261.210 | 7116.78 | 9301.35 | -938.24 | -9253.91 | 40°32'21.343"N | 104°47'35.336"W | 3.52 | LAST BHGE SURVEY (300'FSL & 27'FWL,SEC.28) |
| 18109.00 | 90.060 | 261.210 | 7116.75 | 9326.32 | -942.06 | -9278.62 | 40°32'21.305"N | 104°47'35.656"W | 0.00 | PTB (297'FSL & 2'FWL,SEC.28) |

HOLE & CASING SECTIONS - Ref Wellbore: G & D HANKS WA-27-28HN AWB Ref Wellpath: G & D HANKS WA-27-28HN AWP

| String/Diameter | Start MD [ft] | End MD [ft] | Interval [ft] | Start TVD [ft] | End TVD [ft] | Start N/S [ft] | Start E/W [ft] | End N/S [ft] | End E/W [ft] |
|------------------------|---------------|-------------|---------------|----------------|--------------|----------------|----------------|--------------|--------------|
| 13.5in Open Hole | 25.00 | 1553.00 | 1528.00 | 25.00 | 1520.63 | 0.00 | 0.00 | -118.60 | 223.32 |
| 9.625in Casing Surface | 25.00 | 1553.00 | 1528.00 | 25.00 | 1520.63 | 0.00 | 0.00 | -118.60 | 223.32 |
| 8.5in Open Hole | 1553.00 | 18109.00 | 16556.00 | 1520.63 | 7116.75 | -118.60 | 223.32 | -942.06 | -9278.62 |

WELLPATH COMPOSITION - Ref Wellbore: G & D HANKS WA-27-28HN AWB Ref Wellpath: G & D HANKS WA-27-28HN AWP

| Start MD [ft] | End MD [ft] | Positional Uncertainty Model | Log Name/Comment | Wellbore |
|---------------|-------------|------------------------------|--|----------------------------|
| 25.00 | 1509.00 | BHI NaviTrak (Standard) | 13.5" Surface NaviTrak (Standard) <232-1563> | G & D HANKS WA-27-28HN AWB |
| 1509.00 | 18084.00 | BHI AutoTrak Curve (Short) | BHI AutoTrak Curve (Short) <1602-18109> | G & D HANKS WA-27-28HN AWB |
| 18084.00 | 18109.00 | Blind Drilling (std) | Projection to bit | G & D HANKS WA-27-28HN AWB |

Actual Wellpath Report

G & D HANKS WA-27-28HN AWP

Page 9 of 9

REFERENCE WELLPATH IDENTIFICATION

| | | | |
|----------|--------------------------------|----------|---|
| Operator | BAYSWATER E & P LLC | Slot | SLOT#15 G & D HANKS WA-27-28HN (1138'FSL & 1575'FEL,SEC.27) |
| Area | COLORADO | Well | G & D HANKS WA-27-28HN |
| Field | WELD COUNTY (NAD83/TRUE NORTH) | Wellbore | G & D HANKS WA-27-28HN AWB |
| Facility | SEC.27-T07N-R66W | | |

WELLPATH COMMENTS

| MD [ft] | Inclination [°] | Azimuth [°] | TVD [ft] | Comment |
|------------|--------------------|----------------|-------------|--|
| 18084.00 | 90.060 | 261.210 | 7116.78 | LAST BHGE SURVEY (300'FSL & 27'FWL,SEC.28) |
| 18109.00 | 90.060 | 261.210 | 7116.75 | PTB (297'FSL & 2'FWL,SEC.28) |