

BAYSWATER E & P LLC



Location: COLORADO Slot: SLOT#14 G & D HANKS W-27-28HC (1153'FSL & 1575'FEL,SEC.27)
Field: WELD COUNTY (NAD83/TRUE NORTH) Well: G & D HANKS W-27-28HC
Facility: SEC.27-T07N-R66W Wellbore: G & D HANKS W-27-28HC PWB

Plot reference wellpath is G & D HANKS W-27-28HC PWP (REV-D.01)

Grid System: NAD83 / Lambert Colorado SP, Northern Zone (501), US feet

True vertical depths are referenced to TRUE 38 (4876'GL + 25'KB @ 4901'RKB) (RKB)

North Reference: True north

Measured depths are referenced to TRUE 38 (4876'GL + 25'KB @ 4901'RKB) (RKB)

Scale: True distance

TRUE 38 (4876'GL + 25'KB @ 4901'RKB) (RKB) to Mean Sea Level: 4901 feet

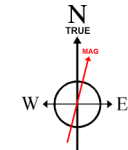
Depths are in feet

Mean Sea Level to Ground level (At Slot: SLOT#14 G & D HANKS W-27-28HC (1153'FSL & 1575'FEL,SEC.27)): 0 feet

Created by: bushjarnh on 2018-06-20

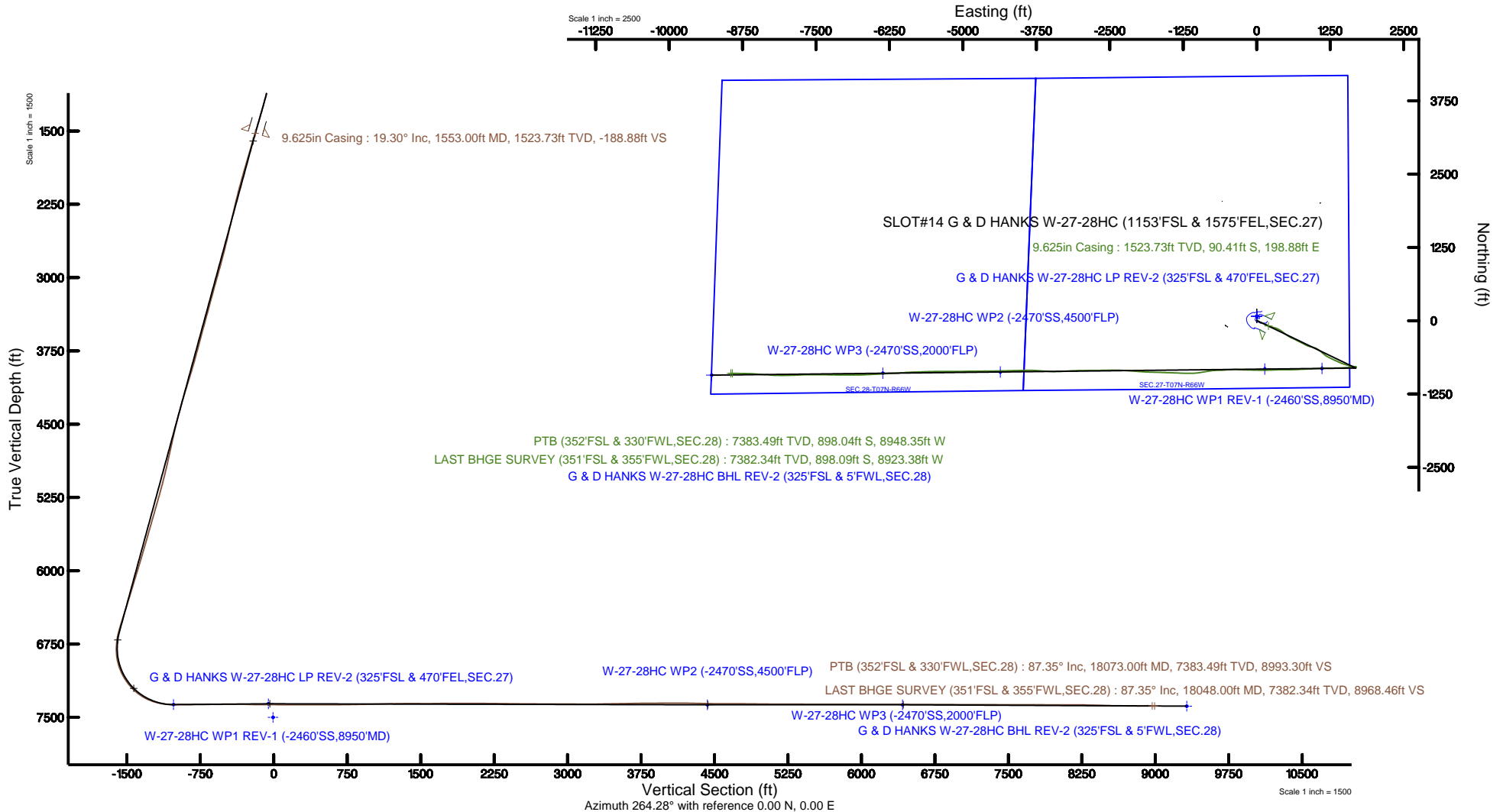
Coordinates are in feet referenced to Slot

Database: Denver



BGGM (1900.0 to 2019.0) Dip: 66.03° Field: 52389.3 nT
Magnetic North is 8.31 degrees East of True North (at 5/7/2018)

To correct azimuth from Magnetic to True add 8.31 degrees



Actual Wellpath Report

G & D HANKS W-27-28HC AWP

Page 1 of 10

REFERENCE WELLPATH IDENTIFICATION			
Operator	BAYSWATER E & P LLC	Slot	SLOT#14 G & D HANKS W-27-28HC (1153'FSL & 1575'FEL,SEC.27)
Area	COLORADO	Well	G & D HANKS W-27-28HC
Field	WELD COUNTY (NAD83/TRUE NORTH)	Wellbore	G & D HANKS W-27-28HC AWP
Facility	SEC.27-T07N-R66W		

REPORT SETUP INFORMATION			
Projection System	NAD83 / Lambert Colorado SP, Northern Zone (501), US feet	Software System	WellArchitect® 5.1
North Reference	True	User	Bushjamh
Scale	0.999970	Report Generated	6/20/2018 at 12:28:43 PM
Convergence at slot	0.48° East	Database/Source file	Denver/G__D_HANKS_W-27-28HC_AWP.xml

WELLPATH LOCATION						
	Local coordinates		Grid coordinates		Geographic coordinates	
	North[ft]	East[ft]	Easting[US ft]	Northing[US ft]	Latitude	Longitude
Slot Location	-195.28	-0.28	3205704.51	1441107.27	40°32'30.779"N	104°45'35.474"W
Facility Reference Pt			3205703.16	1441302.53	40°32'32.708"N	104°45'35.471"W
Field Reference Pt			3174587.00	1430859.71	40°30'51.890"N	104°52'19.470"W

WELLPATH DATUM			
Calculation method	Minimum curvature	TRUE 38 (4876'GL + 25'KB @ 4901'RKB) (RKB) to Facility Vertical Datum	4901.00ft
Horizontal Reference Pt	Slot	TRUE 38 (4876'GL + 25'KB @ 4901'RKB) (RKB) to Mean Sea Level	4901.00ft
Vertical Reference Pt	TRUE 38 (4876'GL + 25'KB @ 4901'RKB) (RKB)	TRUE 38 (4876'GL + 25'KB @ 4901'RKB) (RKB) to Ground Level at Slot (SLOT#14 G & D HANKS W-27-28HC (1153'FSL & 1575'FEL,SEC.27))	4901.00ft
MD Reference Pt	TRUE 38 (4876'GL + 25'KB @ 4901'RKB) (RKB)	Section Origin	N 0.00, E 0.00 ft
Field Vertical Reference	Mean Sea Level	Section Azimuth	264.28°

Actual Wellpath Report

G & D HANKS W-27-28HC AWP

Page 2 of 10

REFERENCE WELLPATH IDENTIFICATION

Operator	BAYSWATER E & P LLC	Slot	SLOT#14 G & D HANKS W-27-28HC (1153'FSL & 1575'FEL,SEC.27)
Area	COLORADO	Well	G & D HANKS W-27-28HC
Field	WELD COUNTY (NAD83/TRUE NORTH)	Wellbore	G & D HANKS W-27-28HC AWB
Facility	SEC.27-T07N-R66W		

WELLPATH DATA (194 stations) † = interpolated/extrapolated station

MD [ft]	Inclination [°]	Azimuth [°]	TVD [ft]	Vert Sect [ft]	North [ft]	East [ft]	Latitude	Longitude	DLS [°/100ft]	Comments
0.00†	0.000	245.750	0.00	0.00	0.00	0.00	40°32'30.779"N	104°45'35.474"W	0.00	
25.00	0.000	245.750	25.00	0.00	0.00	0.00	40°32'30.779"N	104°45'35.474"W	0.00	
137.00	0.340	245.750	137.00	0.32	-0.14	-0.30	40°32'30.777"N	104°45'35.478"W	0.30	
232.00	0.680	286.250	232.00	1.11	-0.09	-1.10	40°32'30.778"N	104°45'35.489"W	0.50	
326.00	0.350	311.710	325.99	1.82	0.25	-1.85	40°32'30.781"N	104°45'35.498"W	0.42	
421.00	0.850	130.390	420.99	1.52	-0.01	-1.53	40°32'30.779"N	104°45'35.494"W	1.26	
515.00	2.520	116.860	514.95	-0.70	-1.40	0.84	40°32'30.765"N	104°45'35.463"W	1.81	
610.00	2.660	81.600	609.85	-4.66	-2.02	4.89	40°32'30.759"N	104°45'35.411"W	1.66	
705.00	4.010	106.580	704.70	-9.94	-2.64	10.25	40°32'30.753"N	104°45'35.342"W	2.06	
799.00	6.620	113.880	798.28	-17.69	-5.78	18.36	40°32'30.722"N	104°45'35.237"W	2.86	
894.00	9.510	117.010	892.34	-29.06	-11.56	30.36	40°32'30.665"N	104°45'35.081"W	3.08	
988.00	12.570	116.620	984.59	-44.24	-19.67	46.43	40°32'30.584"N	104°45'34.873"W	3.26	
1083.00	15.840	113.430	1076.67	-64.30	-29.46	67.57	40°32'30.488"N	104°45'34.599"W	3.54	
1177.00	16.740	113.030	1166.89	-87.37	-39.86	91.80	40°32'30.385"N	104°45'34.285"W	0.96	
1272.00	18.090	114.310	1257.54	-112.14	-51.28	117.84	40°32'30.272"N	104°45'33.948"W	1.48	
1365.00	18.840	115.420	1345.75	-137.49	-63.67	144.56	40°32'30.150"N	104°45'33.602"W	0.89	
1460.00	18.770	116.580	1435.68	-163.54	-77.10	172.08	40°32'30.017"N	104°45'33.246"W	0.40	
1509.00	18.520	116.940	1482.11	-176.76	-84.15	186.07	40°32'29.947"N	104°45'33.064"W	0.56	
1598.00	20.120	113.620	1566.10	-202.00	-96.69	212.70	40°32'29.823"N	104°45'32.719"W	2.18	
1692.00	17.230	101.460	1655.17	-229.41	-105.94	241.17	40°32'29.732"N	104°45'32.351"W	5.14	
1787.00	17.230	102.880	1745.91	-256.19	-111.87	268.67	40°32'29.673"N	104°45'31.994"W	0.44	
1881.00	17.260	105.010	1835.68	-282.43	-118.58	295.72	40°32'29.607"N	104°45'31.644"W	0.67	
1975.00	17.370	109.130	1925.43	-308.21	-126.79	322.44	40°32'29.526"N	104°45'31.298"W	1.31	
2070.00	17.370	112.570	2016.10	-333.56	-136.88	348.94	40°32'29.426"N	104°45'30.955"W	1.08	
2164.00	17.280	117.710	2105.84	-357.57	-148.76	374.25	40°32'29.309"N	104°45'30.627"W	1.63	
2259.00	17.260	121.430	2196.56	-380.58	-162.67	398.77	40°32'29.171"N	104°45'30.309"W	1.16	
2354.00	17.370	125.710	2287.26	-402.45	-178.30	422.31	40°32'29.017"N	104°45'30.004"W	1.35	
2448.00	17.460	127.730	2376.95	-423.21	-195.12	444.86	40°32'28.851"N	104°45'29.712"W	0.65	
2543.00	17.640	127.540	2467.53	-444.04	-212.61	467.55	40°32'28.678"N	104°45'29.419"W	0.20	
2638.00	17.520	127.800	2558.09	-464.89	-230.14	490.26	40°32'28.505"N	104°45'29.124"W	0.15	

Actual Wellpath Report

G & D HANKS W-27-28HC AWP

Page 3 of 10

REFERENCE WELLPATH IDENTIFICATION

Operator	BAYSWATER E & P LLC	Slot	SLOT#14 G & D HANKS W-27-28HC (1153'FSL & 1575'FEL,SEC.27)
Area	COLORADO	Well	G & D HANKS W-27-28HC
Field	WELD COUNTY (NAD83/TRUE NORTH)	Wellbore	G & D HANKS W-27-28HC AWB
Facility	SEC.27-T07N-R66W		

WELLPATH DATA (194 stations)

MD [ft]	Inclination [°]	Azimuth [°]	TVD [ft]	Vert Sect [ft]	North [ft]	East [ft]	Latitude	Longitude	DLS [°/100ft]	Comments
2733.00	17.950	125.220	2648.58	-486.32	-247.35	513.52	40°32'28.335"N	104°45'28.823"W	0.94	
2827.00	17.830	122.040	2738.03	-508.64	-263.34	537.55	40°32'28.177"N	104°45'28.512"W	1.05	
2922.00	17.930	118.980	2828.45	-532.16	-278.14	562.67	40°32'28.030"N	104°45'28.186"W	0.99	
3016.00	17.990	116.160	2917.87	-556.38	-291.55	588.36	40°32'27.898"N	104°45'27.854"W	0.93	
3111.00	17.770	112.530	3008.28	-581.61	-303.57	614.92	40°32'27.779"N	104°45'27.510"W	1.20	
3205.00	17.710	115.020	3097.81	-606.54	-315.12	641.12	40°32'27.665"N	104°45'27.170"W	0.81	
3300.00	17.760	117.940	3188.30	-631.02	-328.02	667.02	40°32'27.537"N	104°45'26.835"W	0.94	
3395.00	17.870	117.580	3278.75	-655.26	-341.56	692.74	40°32'27.404"N	104°45'26.502"W	0.16	
3489.00	17.750	116.080	3368.24	-679.49	-354.53	718.39	40°32'27.275"N	104°45'26.170"W	0.50	
3584.00	17.760	116.320	3458.72	-704.08	-367.32	744.38	40°32'27.149"N	104°45'25.833"W	0.08	
3679.00	17.770	116.930	3549.19	-728.57	-380.31	770.29	40°32'27.021"N	104°45'25.497"W	0.20	
3774.00	17.770	118.410	3639.65	-752.78	-393.78	795.97	40°32'26.888"N	104°45'25.165"W	0.48	
3869.00	17.650	117.820	3730.15	-776.78	-407.39	821.46	40°32'26.753"N	104°45'24.835"W	0.23	
3964.00	17.800	115.610	3820.64	-801.19	-420.39	847.29	40°32'26.625"N	104°45'24.500"W	0.73	
4058.00	17.930	110.740	3910.12	-826.42	-431.73	873.78	40°32'26.513"N	104°45'24.157"W	1.59	
4153.00	17.960	104.200	4000.50	-853.28	-440.50	901.66	40°32'26.426"N	104°45'23.796"W	2.12	
4247.00	17.970	101.440	4089.92	-880.76	-446.93	929.92	40°32'26.362"N	104°45'23.430"W	0.91	
4342.00	17.900	104.080	4180.31	-908.50	-453.39	958.44	40°32'26.299"N	104°45'23.060"W	0.86	
4436.00	17.700	109.500	4269.81	-935.02	-461.67	985.93	40°32'26.217"N	104°45'22.704"W	1.77	
4531.00	17.800	116.150	4360.30	-960.42	-472.90	1012.58	40°32'26.106"N	104°45'22.359"W	2.14	
4625.00	17.680	123.060	4449.84	-983.76	-487.02	1037.44	40°32'25.966"N	104°45'22.037"W	2.24	
4720.00	17.770	126.520	4540.33	-1005.74	-503.51	1061.18	40°32'25.803"N	104°45'21.730"W	1.11	
4814.00	17.570	128.760	4629.90	-1026.48	-520.93	1083.77	40°32'25.631"N	104°45'21.437"W	0.75	
4908.00	17.680	130.490	4719.49	-1046.48	-539.08	1105.69	40°32'25.452"N	104°45'21.153"W	0.57	
5002.00	17.780	131.320	4809.02	-1066.14	-557.83	1127.33	40°32'25.266"N	104°45'20.873"W	0.29	
5097.00	17.660	129.660	4899.52	-1086.15	-576.60	1149.31	40°32'25.081"N	104°45'20.588"W	0.55	
5191.00	17.680	125.520	4989.09	-1106.90	-593.99	1171.91	40°32'24.909"N	104°45'20.295"W	1.34	
5286.00	17.860	121.000	5079.56	-1129.42	-609.88	1196.14	40°32'24.752"N	104°45'19.982"W	1.46	
5381.00	17.880	117.070	5169.98	-1153.36	-624.02	1221.61	40°32'24.612"N	104°45'19.652"W	1.27	
5475.00	18.440	114.970	5259.30	-1178.28	-636.86	1247.94	40°32'24.485"N	104°45'19.311"W	0.92	

Actual Wellpath Report

G & D HANKS W-27-28HC AWP

Page 4 of 10

REFERENCE WELLPATH IDENTIFICATION

Operator	BAYSWATER E & P LLC	Slot	SLOT#14 G & D HANKS W-27-28HC (1153'FSL & 1575'FEL,SEC.27)
Area	COLORADO	Well	G & D HANKS W-27-28HC
Field	WELD COUNTY (NAD83/TRUE NORTH)	Wellbore	G & D HANKS W-27-28HC AWP
Facility	SEC.27-T07N-R66W		

WELLPATH DATA (194 stations)

MD [ft]	Inclination [°]	Azimuth [°]	TVD [ft]	Vert Sect [ft]	North [ft]	East [ft]	Latitude	Longitude	DLS [°/100ft]	Comments
5570.00	18.220	116.290	5349.48	-1203.79	-649.78	1274.88	40°32'24.358"N	104°45'18.962"W	0.49	
5664.00	18.520	115.070	5438.69	-1229.08	-662.62	1301.57	40°32'24.231"N	104°45'18.616"W	0.52	
5759.00	18.370	114.270	5528.81	-1255.01	-675.16	1328.89	40°32'24.107"N	104°45'18.262"W	0.31	
5854.00	18.210	114.150	5619.01	-1280.84	-687.39	1356.08	40°32'23.986"N	104°45'17.910"W	0.17	
5948.00	18.500	115.590	5708.22	-1306.32	-699.84	1382.93	40°32'23.863"N	104°45'17.562"W	0.57	
6042.00	18.490	114.310	5797.37	-1331.97	-712.42	1409.97	40°32'23.739"N	104°45'17.212"W	0.43	
6137.00	18.460	112.150	5887.48	-1358.31	-724.29	1437.63	40°32'23.621"N	104°45'16.854"W	0.72	
6231.00	18.430	108.630	5976.65	-1385.00	-734.65	1465.49	40°32'23.519"N	104°45'16.493"W	1.19	
6326.00	18.370	105.810	6066.79	-1412.61	-743.53	1494.12	40°32'23.431"N	104°45'16.122"W	0.94	
6421.00	17.890	107.200	6157.08	-1439.98	-751.92	1522.47	40°32'23.348"N	104°45'15.755"W	0.68	
6515.00	18.280	106.610	6246.43	-1466.91	-760.40	1550.39	40°32'23.264"N	104°45'15.393"W	0.46	
6610.00	18.420	104.050	6336.60	-1494.82	-768.31	1579.22	40°32'23.186"N	104°45'15.020"W	0.86	
6703.00	18.360	101.090	6424.86	-1522.67	-774.69	1607.85	40°32'23.123"N	104°45'14.649"W	1.01	
6798.00	18.030	100.200	6515.11	-1551.13	-780.17	1637.00	40°32'23.069"N	104°45'14.272"W	0.45	
6892.00	17.420	103.030	6604.65	-1578.44	-785.92	1665.03	40°32'23.012"N	104°45'13.909"W	1.12	
6987.00	9.000	99.500	6697.05	-1599.11	-790.36	1686.25	40°32'22.968"N	104°45'13.634"W	8.90	
7081.00	1.790	64.340	6790.59	-1607.60	-790.94	1694.84	40°32'22.963"N	104°45'13.523"W	8.09	
7175.00	8.030	265.110	6884.33	-1602.40	-790.86	1689.61	40°32'22.963"N	104°45'13.590"W	10.34	
7270.00	17.730	266.640	6976.83	-1581.27	-792.28	1668.51	40°32'22.949"N	104°45'13.864"W	10.22	
7364.00	27.490	267.200	7063.50	-1545.21	-794.18	1632.46	40°32'22.931"N	104°45'14.330"W	10.39	
7458.00	36.640	266.120	7143.07	-1495.40	-797.15	1582.70	40°32'22.901"N	104°45'14.975"W	9.75	
7553.00	45.540	267.250	7214.60	-1433.09	-800.70	1520.43	40°32'22.866"N	104°45'15.782"W	9.40	
7648.00	55.640	267.130	7274.84	-1359.88	-804.30	1447.21	40°32'22.831"N	104°45'16.730"W	10.63	
7743.00	67.050	268.620	7320.32	-1276.82	-807.32	1364.05	40°32'22.801"N	104°45'17.807"W	12.09	
7838.00	75.760	269.670	7350.58	-1187.19	-808.65	1274.10	40°32'22.788"N	104°45'18.972"W	9.23	
7933.00	85.130	268.570	7366.34	-1093.95	-810.10	1180.54	40°32'22.774"N	104°45'20.184"W	9.93	
8027.00	90.280	267.590	7370.10	-1000.27	-813.24	1086.70	40°32'22.743"N	104°45'21.399"W	5.58	
8122.00	90.400	265.770	7369.54	-905.35	-818.74	991.86	40°32'22.688"N	104°45'22.628"W	1.92	
8217.00	90.580	268.270	7368.72	-810.47	-823.68	897.00	40°32'22.640"N	104°45'23.856"W	2.64	
8311.00	90.370	267.630	7367.94	-716.67	-827.04	803.07	40°32'22.606"N	104°45'25.073"W	0.72	

Actual Wellpath Report

G & D HANKS W-27-28HC AWP

Page 5 of 10

REFERENCE WELLPATH IDENTIFICATION

Operator	BAYSWATER E & P LLC	Slot	SLOT#14 G & D HANKS W-27-28HC (1153'FSL & 1575'FEL,SEC.27)
Area	COLORADO	Well	G & D HANKS W-27-28HC
Field	WELD COUNTY (NAD83/TRUE NORTH)	Wellbore	G & D HANKS W-27-28HC AWP
Facility	SEC.27-T07N-R66W		

WELLPATH DATA (194 stations)

MD [ft]	Inclination [°]	Azimuth [°]	TVD [ft]	Vert Sect [ft]	North [ft]	East [ft]	Latitude	Longitude	DLS [°/100ft]	Comments
8406.00	90.520	266.630	7367.21	-621.79	-831.80	708.19	40°32'22.559"N	104°45'26.302"W	1.06	
8500.00	90.490	268.910	7366.38	-527.98	-835.46	614.27	40°32'22.523"N	104°45'27.518"W	2.43	
8595.00	90.460	269.790	7365.59	-433.35	-836.54	519.28	40°32'22.513"N	104°45'28.749"W	0.93	
8689.00	89.600	270.240	7365.54	-339.82	-836.51	425.28	40°32'22.513"N	104°45'29.966"W	1.03	
8784.00	87.880	267.020	7367.63	-245.13	-838.78	330.35	40°32'22.490"N	104°45'31.196"W	3.84	
8879.00	89.940	268.490	7369.44	-150.33	-842.50	235.45	40°32'22.454"N	104°45'32.425"W	2.66	
8973.00	89.780	269.490	7369.67	-56.65	-844.16	141.46	40°32'22.437"N	104°45'33.642"W	1.08	
9068.00	89.780	270.770	7370.03	37.85	-843.94	46.47	40°32'22.439"N	104°45'34.873"W	1.35	
9162.00	90.090	271.400	7370.14	131.19	-842.16	-47.52	40°32'22.457"N	104°45'36.090"W	0.75	
9257.00	89.880	271.050	7370.16	225.49	-840.13	-142.49	40°32'22.477"N	104°45'37.320"W	0.43	
9351.00	89.940	271.920	7370.31	318.75	-837.70	-236.46	40°32'22.501"N	104°45'38.537"W	0.93	
9446.00	89.850	272.910	7370.48	412.79	-833.69	-331.38	40°32'22.541"N	104°45'39.766"W	1.05	
9540.00	89.970	267.960	7370.63	506.22	-832.98	-425.34	40°32'22.548"N	104°45'40.984"W	5.27	
9635.00	90.180	264.230	7370.51	601.16	-839.45	-520.11	40°32'22.484"N	104°45'42.211"W	3.93	
9730.00	90.740	269.230	7369.74	696.04	-844.86	-614.92	40°32'22.430"N	104°45'43.439"W	5.30	
9825.00	90.770	266.770	7368.49	790.82	-848.18	-709.85	40°32'22.397"N	104°45'44.668"W	2.59	
9919.00	90.800	260.450	7367.20	884.76	-858.64	-803.21	40°32'22.294"N	104°45'45.878"W	6.72	
10014.00	91.050	260.970	7365.67	979.56	-873.97	-896.95	40°32'22.143"N	104°45'47.092"W	0.61	
10109.00	91.260	261.300	7363.75	1074.40	-888.61	-990.79	40°32'21.998"N	104°45'48.307"W	0.41	
10204.00	91.290	268.980	7361.64	1169.29	-896.65	-1085.36	40°32'21.918"N	104°45'49.532"W	8.08	
10299.00	91.230	270.580	7359.55	1263.83	-897.01	-1180.33	40°32'21.915"N	104°45'50.762"W	1.68	
10392.00	89.910	272.020	7358.62	1356.12	-894.90	-1273.30	40°32'21.936"N	104°45'51.966"W	2.10	
10486.00	90.030	272.230	7358.67	1449.24	-891.42	-1367.23	40°32'21.970"N	104°45'53.183"W	0.26	
10580.00	89.720	271.810	7358.88	1542.39	-888.10	-1461.17	40°32'22.003"N	104°45'54.400"W	0.56	
10675.00	90.860	271.640	7358.40	1636.58	-885.24	-1556.13	40°32'22.031"N	104°45'55.630"W	1.21	
10769.00	90.860	272.200	7356.99	1729.74	-882.09	-1650.06	40°32'22.062"N	104°45'56.846"W	0.60	
10864.00	89.880	271.090	7356.37	1823.95	-879.37	-1745.02	40°32'22.089"N	104°45'58.076"W	1.56	
10959.00	89.720	272.140	7356.70	1918.17	-876.69	-1839.98	40°32'22.115"N	104°45'59.306"W	1.12	
11054.00	89.850	273.560	7357.06	2012.11	-871.97	-1934.86	40°32'22.162"N	104°46'00.535"W	1.50	
11148.00	90.000	274.410	7357.18	2104.76	-865.43	-2028.63	40°32'22.226"N	104°46'01.750"W	0.92	

Actual Wellpath Report

G & D HANKS W-27-28HC AWP

Page 6 of 10

REFERENCE WELLPATH IDENTIFICATION

Operator	BAYSWATER E & P LLC	Slot	SLOT#14 G & D HANKS W-27-28HC (1153'FSL & 1575'FEL,SEC.27)
Area	COLORADO	Well	G & D HANKS W-27-28HC
Field	WELD COUNTY (NAD83/TRUE NORTH)	Wellbore	G & D HANKS W-27-28HC AWP
Facility	SEC.27-T07N-R66W		

WELLPATH DATA (194 stations)

MD [ft]	Inclination [°]	Azimuth [°]	TVD [ft]	Vert Sect [ft]	North [ft]	East [ft]	Latitude	Longitude	DLS [°/100ft]	Comments
11243.00	89.320	274.960	7357.75	2198.20	-857.67	-2123.31	40°32'22.303"N	104°46'02.976"W	0.92	
11338.00	89.380	273.430	7358.83	2291.77	-850.73	-2218.05	40°32'22.371"N	104°46'04.203"W	1.61	
11433.00	89.350	272.320	7359.88	2385.70	-845.96	-2312.92	40°32'22.418"N	104°46'05.432"W	1.17	
11527.00	89.290	269.820	7360.99	2479.03	-844.21	-2406.89	40°32'22.436"N	104°46'06.649"W	2.66	
11622.00	89.690	268.920	7361.84	2573.65	-845.25	-2501.88	40°32'22.425"N	104°46'07.879"W	1.04	
11715.00	89.690	269.020	7362.34	2666.33	-846.92	-2594.86	40°32'22.409"N	104°46'09.083"W	0.11	
11810.00	89.880	269.450	7362.70	2760.98	-848.19	-2689.85	40°32'22.396"N	104°46'10.314"W	0.49	
11905.00	89.690	269.840	7363.06	2855.56	-848.78	-2784.85	40°32'22.390"N	104°46'11.544"W	0.46	
12000.00	89.850	269.470	7363.44	2950.14	-849.35	-2879.85	40°32'22.384"N	104°46'12.775"W	0.42	
12094.00	89.880	269.210	7363.66	3043.78	-850.43	-2973.84	40°32'22.374"N	104°46'13.992"W	0.28	
12189.00	89.880	269.030	7363.86	3138.44	-851.89	-3068.83	40°32'22.359"N	104°46'15.222"W	0.19	
12283.00	89.820	266.470	7364.10	3232.26	-855.58	-3162.75	40°32'22.322"N	104°46'16.439"W	2.72	
12378.00	91.140	266.260	7363.31	3327.19	-861.61	-3257.55	40°32'22.263"N	104°46'17.667"W	1.41	
12472.00	90.860	267.260	7361.67	3421.09	-866.92	-3351.39	40°32'22.210"N	104°46'18.882"W	1.10	
12566.00	90.950	271.040	7360.18	3514.72	-868.31	-3445.35	40°32'22.196"N	104°46'20.099"W	4.02	
12660.00	90.980	273.380	7358.60	3607.80	-864.69	-3539.26	40°32'22.232"N	104°46'21.315"W	2.49	
12755.00	91.050	274.320	7356.92	3701.46	-858.31	-3634.03	40°32'22.295"N	104°46'22.543"W	0.99	
12850.00	90.400	273.100	7355.71	3795.17	-852.16	-3728.82	40°32'22.355"N	104°46'23.771"W	1.46	
12944.00	90.340	272.240	7355.11	3888.16	-847.79	-3822.71	40°32'22.399"N	104°46'24.987"W	0.92	
13038.00	90.430	268.960	7354.47	3981.58	-846.80	-3916.69	40°32'22.408"N	104°46'26.204"W	3.49	
13133.00	89.880	268.940	7354.22	4076.26	-848.54	-4011.68	40°32'22.391"N	104°46'27.434"W	0.58	
13227.00	89.880	268.560	7354.41	4169.97	-850.59	-4105.65	40°32'22.370"N	104°46'28.651"W	0.40	
13321.00	88.830	268.640	7355.47	4263.70	-852.89	-4199.62	40°32'22.348"N	104°46'29.869"W	1.12	
13416.00	88.770	268.640	7357.46	4358.40	-855.14	-4294.57	40°32'22.325"N	104°46'31.098"W	0.06	
13511.00	88.830	268.970	7359.45	4453.09	-857.12	-4389.53	40°32'22.305"N	104°46'32.328"W	0.35	
13605.00	89.820	269.190	7360.56	4546.75	-858.63	-4483.51	40°32'22.290"N	104°46'33.546"W	1.08	
13700.00	89.970	269.610	7360.73	4641.37	-859.63	-4578.50	40°32'22.280"N	104°46'34.776"W	0.47	
13795.00	89.910	269.370	7360.83	4735.98	-860.47	-4673.50	40°32'22.272"N	104°46'36.006"W	0.26	
13890.00	89.510	270.420	7361.31	4830.52	-860.65	-4768.50	40°32'22.270"N	104°46'37.237"W	1.18	
13984.00	89.350	268.940	7362.25	4924.10	-861.17	-4862.49	40°32'22.264"N	104°46'38.454"W	1.58	

Actual Wellpath Report

G & D HANKS W-27-28HC AWP

Page 7 of 10

REFERENCE WELLPATH IDENTIFICATION

Operator	BAYSWATER E & P LLC	Slot	SLOT#14 G & D HANKS W-27-28HC (1153'FSL & 1575'FEL,SEC.27)
Area	COLORADO	Well	G & D HANKS W-27-28HC
Field	WELD COUNTY (NAD83/TRUE NORTH)	Wellbore	G & D HANKS W-27-28HC AWB
Facility	SEC.27-T07N-R66W		

WELLPATH DATA (194 stations)

MD [ft]	Inclination [°]	Azimuth [°]	TVD [ft]	Vert Sect [ft]	North [ft]	East [ft]	Latitude	Longitude	DLS [°/100ft]	Comments
14079.00	89.380	268.030	7363.30	5018.83	-863.68	-4957.45	40°32'22.239"N	104°46'39.684"W	0.96	
14173.00	89.540	269.760	7364.19	5112.52	-865.50	-5051.42	40°32'22.221"N	104°46'40.901"W	1.85	
14268.00	89.940	270.120	7364.62	5207.06	-865.60	-5146.42	40°32'22.220"N	104°46'42.132"W	0.57	
14363.00	89.910	270.760	7364.74	5301.51	-864.87	-5241.42	40°32'22.227"N	104°46'43.362"W	0.67	
14457.00	89.850	269.240	7364.94	5395.04	-864.87	-5335.42	40°32'22.227"N	104°46'44.579"W	1.62	
14552.00	89.940	269.600	7365.11	5489.66	-865.83	-5430.41	40°32'22.217"N	104°46'45.810"W	0.39	
14647.00	89.880	269.110	7365.26	5584.28	-866.90	-5525.40	40°32'22.207"N	104°46'47.040"W	0.52	
14741.00	89.910	267.860	7365.44	5678.03	-869.38	-5619.37	40°32'22.182"N	104°46'48.257"W	1.33	
14835.00	89.750	267.780	7365.71	5771.85	-872.96	-5713.30	40°32'22.146"N	104°46'49.474"W	0.19	
14930.00	89.850	268.740	7366.05	5866.62	-875.84	-5808.26	40°32'22.117"N	104°46'50.704"W	1.02	
15024.00	89.940	267.120	7366.22	5960.42	-879.24	-5902.19	40°32'22.084"N	104°46'51.920"W	1.73	
15118.00	89.850	265.410	7366.39	6054.36	-885.36	-5995.99	40°32'22.023"N	104°46'53.135"W	1.82	
15213.00	89.880	266.000	7366.61	6149.33	-892.48	-6090.72	40°32'21.952"N	104°46'54.362"W	0.62	
15308.00	89.880	266.950	7366.81	6244.26	-898.32	-6185.54	40°32'21.895"N	104°46'55.590"W	1.00	
15403.00	89.850	267.730	7367.04	6339.13	-902.73	-6280.44	40°32'21.851"N	104°46'56.819"W	0.82	
15497.00	89.820	267.200	7367.31	6432.98	-906.88	-6374.34	40°32'21.809"N	104°46'58.036"W	0.56	
15592.00	89.910	266.650	7367.53	6527.88	-911.98	-6469.21	40°32'21.759"N	104°46'59.264"W	0.59	
15687.00	89.720	267.020	7367.84	6622.78	-917.22	-6564.06	40°32'21.707"N	104°47'00.493"W	0.44	
15782.00	89.940	266.870	7368.12	6717.68	-922.29	-6658.92	40°32'21.656"N	104°47'01.722"W	0.28	
15877.00	89.820	269.240	7368.32	6812.47	-925.51	-6753.86	40°32'21.624"N	104°47'02.951"W	2.50	
15971.00	89.820	270.770	7368.61	6906.00	-925.50	-6847.86	40°32'21.624"N	104°47'04.169"W	1.63	
16066.00	89.780	269.650	7368.95	7000.49	-925.16	-6942.86	40°32'21.627"N	104°47'05.399"W	1.18	
16160.00	89.910	269.960	7369.20	7094.05	-925.48	-7036.86	40°32'21.624"N	104°47'06.617"W	0.36	
16254.00	89.850	270.280	7369.40	7187.56	-925.28	-7130.86	40°32'21.626"N	104°47'07.834"W	0.35	
16348.00	89.850	271.080	7369.64	7280.98	-924.16	-7224.85	40°32'21.636"N	104°47'09.051"W	0.85	
16443.00	89.780	270.790	7369.95	7375.34	-922.61	-7319.83	40°32'21.651"N	104°47'10.282"W	0.31	
16537.00	89.720	269.430	7370.36	7468.85	-922.43	-7413.83	40°32'21.653"N	104°47'11.499"W	1.45	
16631.00	89.910	270.280	7370.66	7562.40	-922.67	-7507.83	40°32'21.650"N	104°47'12.717"W	0.93	
16726.00	89.940	271.480	7370.79	7656.77	-921.21	-7602.82	40°32'21.664"N	104°47'13.947"W	1.26	
16820.00	89.780	267.280	7371.02	7750.38	-922.23	-7696.79	40°32'21.654"N	104°47'15.164"W	4.47	

Actual Wellpath Report

G & D HANKS W-27-28HC AWP

Page 8 of 10

REFERENCE WELLPATH IDENTIFICATION

Operator	BAYSWATER E & P LLC	Slot	SLOT#14 G & D HANKS W-27-28HC (1153'FSL & 1575'FEL,SEC.27)
Area	COLORADO	Well	G & D HANKS W-27-28HC
Field	WELD COUNTY (NAD83/TRUE NORTH)	Wellbore	G & D HANKS W-27-28HC AWB
Facility	SEC.27-T07N-R66W		

WELLPATH DATA (194 stations)

MD [ft]	Inclination [°]	Azimuth [°]	TVD [ft]	Vert Sect [ft]	North [ft]	East [ft]	Latitude	Longitude	DLS [°/100ft]	Comments
16915.00	89.970	267.120	7371.23	7845.25	-926.87	-7791.68	40°32'21.608"N	104°47'16.393"W	0.26	
17010.00	89.880	268.730	7371.35	7940.06	-930.31	-7886.61	40°32'21.574"N	104°47'17.623"W	1.70	
17104.00	89.970	268.790	7371.47	8033.77	-932.34	-7980.59	40°32'21.553"N	104°47'18.840"W	0.12	
17199.00	89.880	269.770	7371.60	8128.41	-933.54	-8075.58	40°32'21.541"N	104°47'20.070"W	1.04	
17292.00	89.880	271.310	7371.79	8220.85	-932.66	-8168.57	40°32'21.549"N	104°47'21.275"W	1.66	
17387.00	88.370	273.990	7373.24	8314.82	-928.27	-8263.45	40°32'21.593"N	104°47'22.504"W	3.24	
17482.00	88.220	274.110	7376.07	8408.40	-921.56	-8358.17	40°32'21.658"N	104°47'23.730"W	0.20	
17576.00	88.370	274.150	7378.87	8500.97	-914.80	-8451.88	40°32'21.725"N	104°47'24.944"W	0.17	
17671.00	89.600	274.020	7380.55	8594.57	-908.03	-8546.63	40°32'21.792"N	104°47'26.171"W	1.30	
17766.00	88.460	271.810	7382.16	8688.47	-903.20	-8641.48	40°32'21.839"N	104°47'27.400"W	2.62	
17860.00	90.280	270.600	7383.19	8781.78	-901.22	-8735.45	40°32'21.858"N	104°47'28.617"W	2.32	
17955.00	91.690	271.540	7381.56	8876.09	-899.45	-8830.42	40°32'21.875"N	104°47'29.847"W	1.78	
18048.00	87.350	270.130	7382.34	8968.46	-898.09	-8923.38	40°32'21.888"N	104°47'31.051"W	4.91	LAST BHGE SURVEY (351'FSL & 355'FWL,SEC.28)
18073.00	87.350	270.130	7383.49	8993.30	-898.04	-8948.35	40°32'21.889"N	104°47'31.375"W	0.00	PTB (352'FSL & 330'FWL,SEC.28)

HOLE & CASING SECTIONS - Ref Wellbore: G & D HANKS W-27-28HC AWB Ref Wellpath: G & D HANKS W-27-28HC AWP

String/Diameter	Start MD [ft]	End MD [ft]	Interval [ft]	Start TVD [ft]	End TVD [ft]	Start N/S [ft]	Start E/W [ft]	End N/S [ft]	End E/W [ft]
9.625in Casing	25.00	1553.00	1528.00	25.00	1523.73	0.00	0.00	-90.41	198.88

Actual Wellpath Report

G & D HANKS W-27-28HC AWP

Page 9 of 10

REFERENCE WELLPATH IDENTIFICATION

Operator	BAYSWATER E & P LLC	Slot	SLOT#14 G & D HANKS W-27-28HC (1153'FSL & 1575'FEL,SEC.27)
Area	COLORADO	Well	G & D HANKS W-27-28HC
Field	WELD COUNTY (NAD83/TRUE NORTH)	Wellbore	G & D HANKS W-27-28HC AWB
Facility	SEC.27-T07N-R66W		

TARGETS

Name	TVD [ft]	North [ft]	East [ft]	Grid East [US ft]	Grid North [US ft]	Latitude	Longitude	Shape
W-27-28HC WP1 REV-1 (-2460'SS,8950'MD)	7361.00	-825.30	137.72	3205849.11	1440283.18	40°32'22.624"N	104°45'33.691"W	point
G & D HANKS W-27-28HC LP REV-2 (325'FSL & 470'FEL,SEC.27)	7369.00	-814.60	1109.84	3206821.07	1440301.99	40°32'22.729"N	104°45'21.100"W	point
W-27-28HC WP2 (-2470'SS,4500'FLP)	7371.00	-874.75	-4362.01	3201350.10	1440196.17	40°32'22.131"N	104°46'31.972"W	point
W-27-28HC WP3 (-2470'SS,2000'FLP)	7371.00	-896.72	-6361.89	3199350.53	1440157.51	40°32'21.910"N	104°46'57.874"W	point
G & D HANKS W-27-28HC BHL REV-2 (325'FSL & 5'FWL,SEC.28)	7385.00	-928.73	-9275.09	3196437.79	1440101.19	40°32'21.584"N	104°47'35.606"W	point
SEC.27,28 (460'FSL,460'FEL,5'FWL) SEC.33,34 (460'FNL)	7500.00	75.05	0.00	3205703.88	1441182.31	40°32'31.520"N	104°45'35.474"W	polygon
SEC.27-T07N-R66W	9999.00	75.05	0.00	3205703.88	1441182.31	40°32'31.520"N	104°45'35.474"W	polygon
SEC.28-T07N-R66W*	9999.00	75.05	0.00	3205703.88	1441182.31	40°32'31.520"N	104°45'35.474"W	polygon

WELLPATH COMPOSITION - Ref Wellbore: G & D HANKS W-27-28HC AWB Ref Wellpath: G & D HANKS W-27-28HC AWP

Start MD [ft]	End MD [ft]	Positional Uncertainty Model	Log Name/Comment	Wellbore
25.00	1509.00	BHI NaviTrak (Standard)	13.5" BHI NaviTrak (Standard) <137-1509>	G & D HANKS W-27-28HC AWB
1509.00	18048.00	BHI AutoTrak Curve (Short)	BHI AutoTrak Curve (Short) <1598-18048>	G & D HANKS W-27-28HC AWB
18048.00	18073.00	Blind Drilling (std)	Projection to bit	G & D HANKS W-27-28HC AWB

Actual Wellpath Report

G & D HANKS W-27-28HC AWP

Page 10 of 10

REFERENCE WELLPATH IDENTIFICATION			
Operator	BAYSWATER E & P LLC	Slot	SLOT#14 G & D HANKS W-27-28HC (1153'FSL & 1575'FEL,SEC.27)
Area	COLORADO	Well	G & D HANKS W-27-28HC
Field	WELD COUNTY (NAD83/TRUE NORTH)	Wellbore	G & D HANKS W-27-28HC AWB
Facility	SEC.27-T07N-R66W		

WELLPATH COMMENTS				
MD [ft]	Inclination [°]	Azimuth [°]	TVD [ft]	Comment
18048.00	87.350	270.130	7382.34	LAST BHGE SURVEY (351'FSL & 355'FWL,SEC.28)
18073.00	87.350	270.130	7383.49	PTB (352'FSL & 330'FWL,SEC.28)