

Cementing Treatment



Start Date	3-29-2018	Well	G & D HANKS T-27-28HC
End Date	3-29 2018	County	WELD
Client	BAYSWATER EXPLORATION & PRODUCTION, LLC	State/Province	CO
Client Field Rep	Marsh	API	05-123-46279
Service Supervisor	Albert Snyder	Rig	True 38
Field Ticket No.	FT-05199-Y7J5P60202-78327	Type of Job	Surface
District	Cheyenne, WY		

WELL GEOMETRY

Type	ID (in)	OD (in)	Wt. (lb/ft)	MD (ft)	TVD (ft)	Excess(%)
Open Hole	13.50			1,553.00	1,553.00	30.00
Casing	8.92	9.63	36.00	1,553.00	1,553.00	

Shoe Length (ft): 44

HARDWARE

Bottom Plug Used?	No
Top Plug Used?	Yes
Top Plug Provided By	Bayswater
Top Plug Size	9 5/8
Centralizers Used	No
Landing Collar Depth (ft)	1,507
Tool Type	Float Collar
Tool Depth (ft)	1507
Max Casing Pressure - Rated (psi)	3520
Max Casing Pressure - Operated (psi)	2400
Pipe Movement	None
Job Pumped Through	Cement head
Top Connection Thread	8RD
Top Connection Size	9 5/8

Cementing Treatment



CIRCULATION PRIOR TO JOB

Well Circulated By	rig	Solids Present at End of Circulation	No
Circulation Prior to Job	Yes	10 sec SGS	1
Circulation Time (min)	30 minutes	10 min SGS	1
Circulation Rate (bpm)	6	30 min SGS	1
Circulation Volume (bbls)	200	Flare Prior to/during the Cement Job	No
Lost Circulation Prior to Cement Job	No	Gas Present	No
Mud Density In (ppg)	8.8	Gas Units	
Mud Density Out (ppg)	8.8		
PV Mud In	3		
PV Mud Out	3		
YP Mud In	1		
YP Mud Out	1		

TEMPERATURE

Ambient Temperature (°F)	45	Slurry Cement Temperature (°F)	70
Mix Water Temperature (°F)	70	Flow Line Temperature (°F)	98

BJ FLUID DETAILS

Fluid Type	Fluid Name	Density (ppg)	Yield (Cu Ft/sk)	H2O Req. (gals/sk)	Planned Top of Fluid (Ft)	Length (Ft)	Vol (sk)	Vol (Cu Ft)	Vol (bbls)
Spacer / Pre Flush / Flush	Water	8.3337							20.0000
Lead Slurry	BJCem S100.03.1C	12.0000	2.5298	14.86	0.00	1,050.00	265	667.0000	118.7000
Tail Slurry	BJCem S100.03.1C	12.5000	2.2256	12.59	1,050.00	500.00	150	336.0000	59.8000
Displacement Final	Water	8.3337							116.6000

Cementing Treatment



Fluid Type	Fluid Name	Component	Concentration	UOM
Spacer / Pre Flush / Flush	Water	Fresh Water	100.0000	PCT
Lead Slurry	BJCem S100.03.1C	Foam Preventer, FP-25	0.3000	BWOB
Lead Slurry	BJCem S100.03.1C	CEMENT EXTENDER, GYPSUM, A-10	5.0000	BWOB
Lead Slurry	BJCem S100.03.1C	ACCELERATOR, SALT, CHLORIDE, CALCIUM, A-7P, PELLETS	2.0000	LBS/SK
Lead Slurry	BJCem S100.03.1C	CEMENT EXTENDER,SODIUM METASILICATE A-2 ANHYDROUS	2.0000	LBS/SK
Lead Slurry	BJCem S100.03.1C	CEMENT, ASTM TYPE III	100.0000	PCT
Lead Slurry	BJCem S100.03.1C	IntegraSeal CELLO	0.1300	LBS/SK
Tail Slurry	BJCem S100.03.1C	CEMENT EXTENDER,SODIUM METASILICATE A-2 ANHYDROUS	2.0000	LBS/SK
Tail Slurry	BJCem S100.03.1C	Foam Preventer, FP-25	0.3000	BWOB
Tail Slurry	BJCem S100.03.1C	CEMENT, ASTM TYPE III	100.0000	PCT
Tail Slurry	BJCem S100.03.1C	ACCELERATOR, SALT, CHLORIDE, CALCIUM, A-7P, PELLETS	2.0000	LBS/SK
Tail Slurry	BJCem S100.03.1C	IntegraSeal CELLO	0.1300	LBS/SK
Tail Slurry	BJCem S100.03.1C	CEMENT EXTENDER, GYPSUM, A-10	5.0000	BWOB
Displacement Final	Water	Fresh Water	100.0000	PCT

DISPLACEMENT AND END OF JOB SUMMARY

Displaced By	BJ Services	Amount of Cement Returned/Reversed	36
Calculated Displacement Volume (bbls)	116	Method Used to Verify Returns	vsual
Actual Displacement Volume (bbls)	116	Amount of Spacer to Surface	20 bbls
Did Float Hold?	Yes	Pressure Left on Casing (psi)	36 bbls
Bump Plug	yes	Amount Bled Back After Job	1 bbl
Bump Plug Pressure (psi)	1100	Total Volume Pumped (bbls)	315
Were Returns Planned at Surface	yes	Top Out Cement Spotted	No
Cement returns During Job	yes	Lost Circulation During Cement Job	No



Customer Name BAYSWATER
 Well Name G&D Hanks T-27-28HC
 Job Type SURFACE

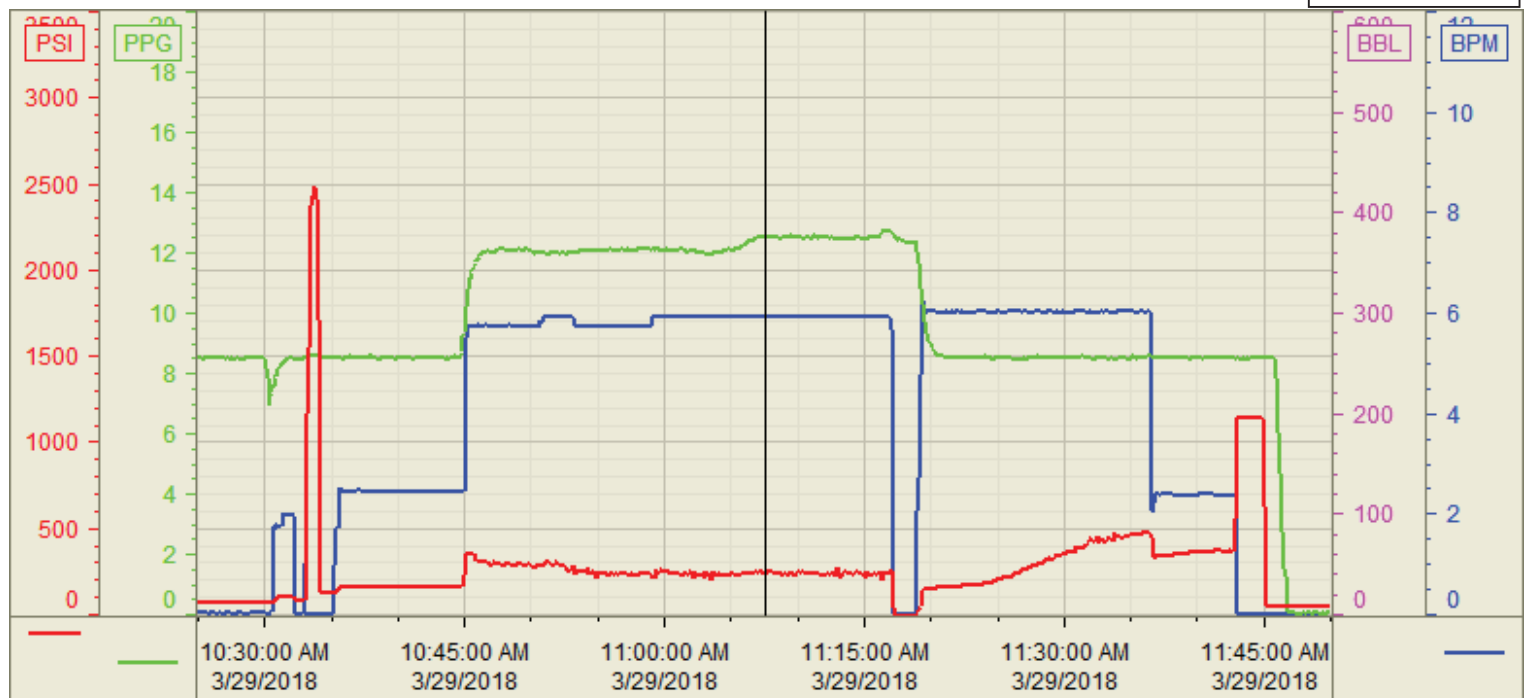
District Cheyenne
 Supervisor ALBERT SNYDER

Start Date/Time	Event	Event ID	Density (lb/gal)	Pump Rate (bpm)	Pump Vol (bbls)	Pipe Pressure (psi)	Comments
3/29/2018 6:00	Called out						Called out at 6:00 am
3/29/2018 6:00	Waiting on Location						Already on location waiting
3/29/2018 9:30	Requeste on location						Requested on location at 9:30 am
3/29/2018 6:00	Waiting on Location						Already on location waiting
3/29/2018 10:00	Steacs Briefing						Discussed rigging up
3/29/2018 10:10	Rig up	50					rig up using safety and teamwork
3/29/2018 10:30	Safety Meeting	53					Discussed job with rig crew.
3/29/2018 10:45	Fill,Lines		8.33	2	3	150	Using fresh water
3/29/2018 10:47	Test Iron		8.33	1	1	2000	Lines tested good
3/29/2018 10:49	Pump Spacer	56	8.33	3	20	170	Pump Dyed Spacer
3/29/2018 10:58	Pump Lead Cement	58	12	6	119	200	Mix and pump 265 sks of p100 at 12# 2.52 yild and 14.86 wr
3/29/2018 11:20	Pump Tail cement	60	12.5	6	59.3	190	Mix and pump 150 sks of p100 @12.5 with 2.22 yield and 12.59 wr
3/29/2018 11:30	Drop plug		8.33				used their plug wash on top of plug
3/29/2018 11:33	Displace well		8.33	6	40	230	Fresh water
3/29/2018 11:43	Displace well		8.33	6	57	350	Spacer to the surface 20 BBLS
3/29/2018 11:48	Displace well		8.33	6	77	400	Cement to the surface 36 BBLS
3/29/2018 11:51	slow rate		8.33	3	100	350	Slowed to land the plug
3/29/2018 11:57	Land plug	67	8.33	3	116	400/1100	plug landed on calculated
3/29/2018 12:05	Check the float						Flota is holding FLOWED BACK 1 BARRELS
3/29/2018 12:20	Steacs Briefing						Discussed how we were going to rig down
3/29/2018 12:30	Rig down						Used team work and safety
3/29/2018 1:00	After action review						Discussed how we can make job better
3/29/2018 1:10	wait for next Surface Pipe						Wait on location for surface #8

Customer: BAYSWATER
Well Number: T-27-28HC
Lease Info: G&D Hanks



Print Date/Time
3/29/2018 11:56:48 AM



	Name	Y value	X value/time stamp	Tag name Y
1	DS - Press (PSI)	236.4	3/29/2018 11:07:31 AM	Cementer\DS_DISCHARGE_PRESS_DIAL
2	DH - Density (PPG)	12.52 i.	3/29/2018 11:07:32 AM i.	Cementer\DENSITY2_ACTUAL_RATE
3	Combined Rate	5.93	3/29/2018 11:07:31 AM	Cementer\Flow_Combined
4				
5				

Source: Control1 11:56:43 AM