

This is a topographic map of a mountainous region. A blue line, likely representing a pipeline or road, runs diagonally across the map. A black rectangle highlights a specific area in the center-right. Within this rectangle, a black arrow points to a location labeled 'PROPOSED POND'. The map includes various labels: 'T12N' and 'T11N' in blue boxes on the left; 'R 97 W' in a blue box on the left; 'C.R. 4' and 'C.R. 75P' for county roads; 'Ace in the Hole PIPELINE' for a pipeline; 'Pumping Sta' and 'Wells' for infrastructure; 'Powder Wash' for a water feature; 'Draw' and 'Hole' for other features; and numerous contour lines with elevation values (e.g., 6600, 6700, 6800). A grid of red lines is overlaid on the map.

1038' FROM THE NORTH LINE OF SECTION 4
1229' FROM THE WEST LINE OF SECTION 4

[illegible]

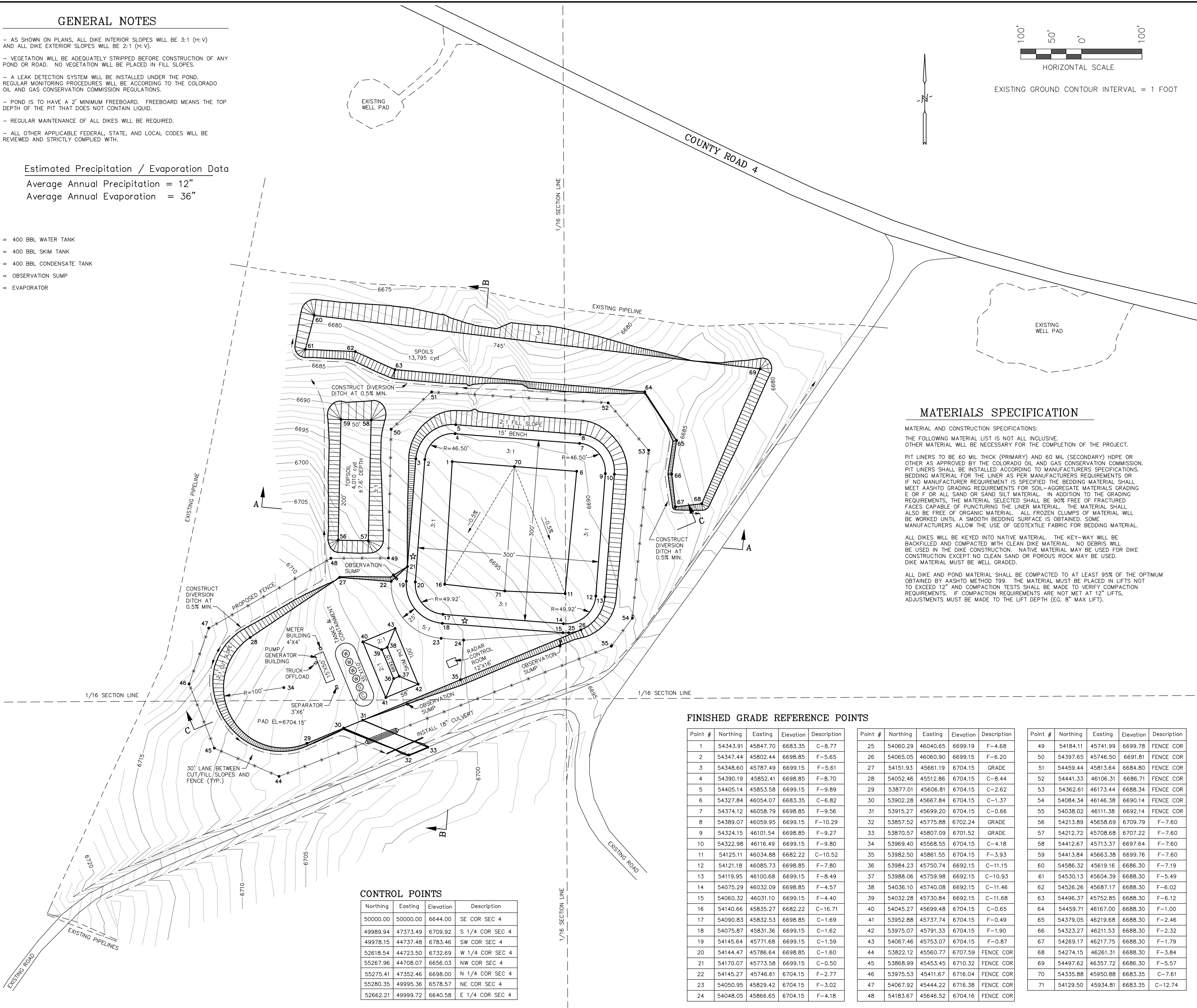
SCALE: NOT TO SCALE
DRAWN BY: D.G.W.
DATE DRAWN: 11-13-17
UELS FILE NO.: W - 2 1 1 0
PROJ. NO: DOM04-18-0021
FILE: 3 3 1 2 0

1

- AS SHOWN ON PLANS, ALL DIKE INTERIOR SLOPES WILL BE 3:1 (H:V) AND ALL DIKE EXTERIOR SLOPES WILL BE 2:1 (H:V).
- VEGETATION WILL BE ADEQUATELY STRIPPED BEFORE CONSTRUCTION OF ANY POND OR ROAD. NO VEGETATION WILL BE PLACED IN FILL SLOPES.
- A LEAK DETECTION SYSTEM WILL BE INSTALLED UNDER THE POND. REGULAR MONITORING PROCEDURES WILL BE ACCORDING TO THE COLORADO OIL AND GAS CONSERVATION COMMISSION REGULATIONS.
- POND IS TO HAVE A 2' MINIMUM FREEBOARD. FREEBOARD MEANS THE TOP DEPTH OF THE PIT THAT DOES NOT CONTAIN LIQUID.
- REGULAR MAINTENANCE OF ALL DIKES WILL BE REQUIRED.
- ALL OTHER APPLICABLE FEDERAL, STATE, AND LOCAL CODES WILL BE REVIEWED AND STRICTLY COMPLIED WITH.

Average Annual Precipitation = 12"
Average Annual Evaporation = 36"

- (W) = 400 BBL WATER TANK
 (S) = 400 BBL SKIM TANK
 (C) = 400 BBL CONDENSATE TANK
 • = OBSERVATION SUMP
 ☆ = EVAPORATOR



MAINTENANCE AND CONSTRUCTION SPECIFICATIONS:

THE FOLLOWING MATERIAL LIST IS NOT ALL INCLUSIVE. OTHER MATERIAL WILL BE NECESSARY FOR THE COMPLETION OF THE PROJECT.

PIT LINERS SHALL BE 60 MIL THICK (PRIMARY) AND 60 MIL (SECONDARY) HDPE OR OTHER AS APPROVED BY THE COLORADO OIL AND GAS CONSERVATION COMMISSION. PIT LINERS SHALL BE INSTALLED ACCORDING TO MANUFACTURERS SPECIFICATIONS. BEDDING MATERIAL FOR THE LINER AS PER MANUFACTURERS REQUIREMENTS OR IF NO MANUFACTURER REQUIREMENT IS SPECIFIED THE BEDDING MATERIAL SHALL BE BEDDING MATERIAL AS SPECIFIED IN THE FOLLOWING: - ORGANIC MATERIAL, GRADED E OR F OR ALL SAND OR SAND SILT MATERIAL. IN ADDITION TO THE GRADING REQUIREMENTS, THE MATERIAL SELECTED SHALL BE 90% FREE OF FRACTURED FACES CAPABLE OF PUNCTURING THE LINER MATERIAL. THE MATERIAL SHALL BE ALL GRADED ORGANIC MATERIAL. ALL MATERIAL LUMPS OF MATERIAL WILL BE WORKED UNTIL A SMOOTH BEDDING SURFACE IS OBTAINED. SOME MANUFACTURERS ALLOW THE USE OF GEOTEXTILE FABRIC FOR BEDDING MATERIAL.

ALL DIKES WILL BE KEPTED INTO NATIVE MATERIAL. THE KEY-WAY WILL BE BACKFILLED AND COMPACTED WITH CLEAN DIKE MATERIAL. NO DEBRIS WILL BE USED IN THE DIKE CONSTRUCTION. NATIVE MATERIAL MAY BE USED FOR DIKE CONSTRUCTION EXCEPT NO CLEAN SAND OR POROUS ROCK MAY BE USED. DIKE MATERIAL MUST BE WELL GRADED.

ALL DIKE AND POND MATERIAL SHALL BE COMPACTED TO AT LEAST 95% OF THE OPTIMUM OBTAINED BY AASHTO METHOD T99. THE MATERIAL MUST BE PLACED IN LIFTS NOT EXCEEDING 12" AND COMPACTION TEST SHALL BE MADE TO VERIFY COMPACTION REQUIREMENTS. IF COMPACTION REQUIREMENTS ARE NOT MET AT 12" LIFTS, ADJUSTMENTS MUST BE MADE TO THE LIFT DEPTH (EG. 8" MAX LIFT).

Point #	Northing	Easting	Elevation	Description	Point #	Northing	Easting	Elevation	Description	Point #	Northing	Easting	Elevation	Description
1	54343.91	45847.10	6683.35	C-8.77	25	54060.29	46040.65	6699.19	F-4.68	49	54184.11	45741.99	6699.78	FENCE COR
2	54347.44	45802.44	6698.85	F-5.65	26	54065.05	46060.90	6699.15	F-6.20	50	54397.65	45746.50	6691.81	FENCE COR
3	54348.60	45787.49	6699.15	F-5.61	27	54151.93	45661.19	6704.15	GRADE	51	54459.44	45813.64	6684.80	FENCE COR
4	54390.19	45852.41	6698.85	F-8.70	28	54052.46	45512.86	6704.15	C-8.44	52	54441.33	46106.31	6686.71	FENCE COR
5	54405.14	45853.68	6699.15	F-9.89	29	53877.01	45606.81	6704.15	C-2.62	53	54362.61	46173.44	6688.34	FENCE COR
6	54327.84	46054.07	6683.35	C-6.82	30	53902.28	45667.84	6704.15	C-1.37	54	54084.34	46146.38	6690.14	FENCE COR
7	54374.12	46058.79	6698.85	F-9.56	31	53915.27	45699.20	6704.15	C-0.66	55	54038.02	46111.38	6692.14	FENCE COR
8	54389.07	46059.95	6699.15	F-10.29	32	53857.52	45775.88	6702.24	GRADE	56	54213.89	45658.69	6709.79	F-7.60
9	54324.15	46101.54	6698.85	F-9.27	33	53870.57	45807.09	6701.52	GRADE	57	54212.72	45708.68	6707.22	F-7.60
10	54322.98	46116.49	6699.15	F-9.80	34	53969.40	45688.55	6704.15	C-4.18	58	54412.67	45713.37	6697.64	F-7.60
11	54125.11	46034.88	6682.22	C-10.52	35	53982.50	45861.55	6704.15	F-3.93	59	54413.84	45663.38	6699.76	F-7.60
12	54211.18	46085.73	6698.85	F-7.80	36	53984.23	45750.74	6692.15	C-11.15	60	54586.32	45619.16	6686.30	F-7.19
13	54119.95	46100.68	6699.15	F-8.49	37	53988.06	45759.98	6692.15	C-10.93	61	54530.13	45604.39	6688.30	F-5.49
14	54075.29	46032.09	6698.85	F-4.57	38	54036.10	45740.08	6692.15	C-11.46	62	54526.26	45687.17	6688.30	F-6.02
15	54060.32	46031.10	6699.15	F-4.40	39	54032.28	45730.84	6692.15	C-11.68	63	54496.37	45752.85	6688.30	F-6.12
16	54140.66	45835.27	6682.22	C-16.71	40	54045.27	45699.48	6704.15	C-0.65	64	54459.71	46167.00	6688.30	F-1.00
17	54090.83	45832.53	6698.85	C-1.69	41	53952.88	45737.74	6704.15	F-0.49	65	54379.05	46219.68	6688.30	F-2.46
18	54075.87	45831.36	6699.15	C-1.62	42	53975.07	45791.33	6704.15	F-1.90	66	54323.27	46211.53	6688.30	F-2.32
19	54145.64	45771.68	6699.15	C-1.59	43	54067.46	45753.07	6704.15	F-0.87	67	54269.17	46217.75	6688.30	F-1.79
20	54144.47	45786.64	6698.85	C-1.60	44	53822.12	45560.77	6707.59	FENCE COR	68	54274.15	46261.31	6688.30	F-3.84
21	54170.07	45773.58	6699.15	C-0.50	45	53868.99	45453.45	6710.32	FENCE COR	69	54497.62	46357.72	6686.30	F-5.57
22	54145.27	45746.61	6704.15	F-2.77	46	53975.53	45411.67	6716.04	FENCE COR	70	54335.88	45950.88	6683.35	C-7.61
23	54050.95	45829.42	6704.15	F-3.02	47	54067.92	45444.22	6716.38	FENCE COR	71	54129.50	45934.81	6683.35	C-12.74
24	54048.05	45866.65	6704.15	F-4.18	48	54183.67	45646.52	6704.16	FENCE COR					



DOMINION ENERGY WEXPRO
POWDER WASH EVAPORATION FACILITY
LOCATED IN THE NW 1/4 OF
SECTION 4, T11N, R97W, 6th P.M.
MOFFAT COUNTY, COLORADO

[illegible]

RESPONSIBLE ENGINEER:

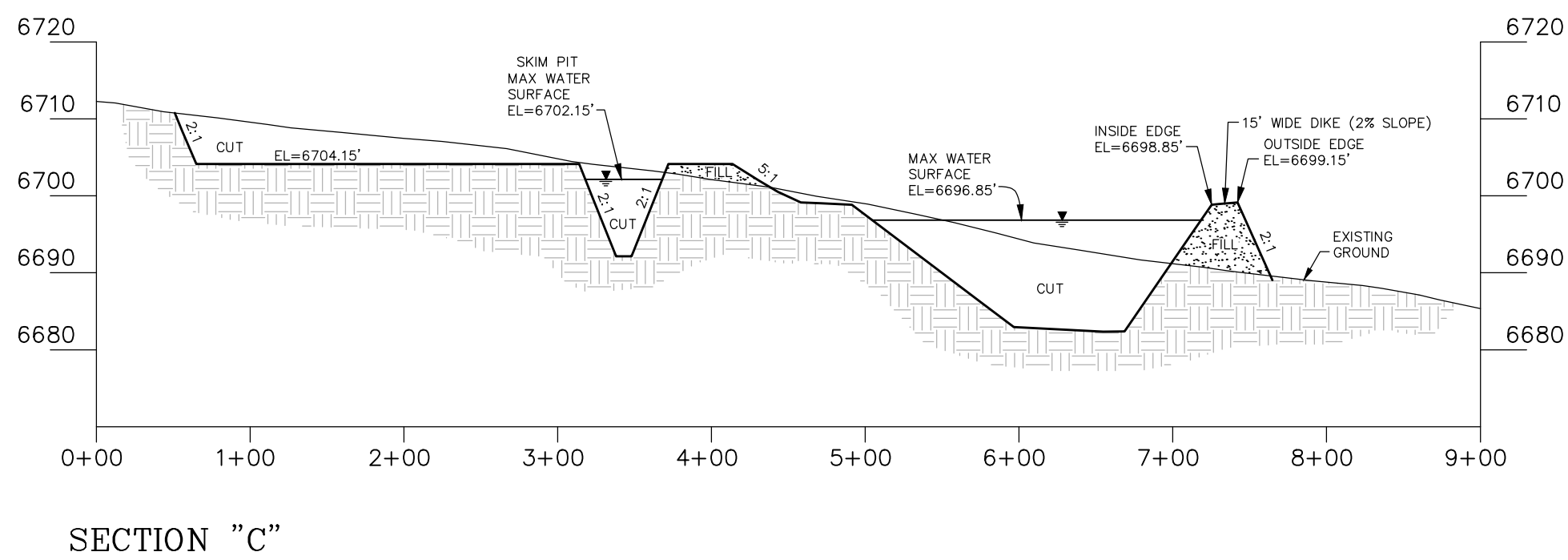
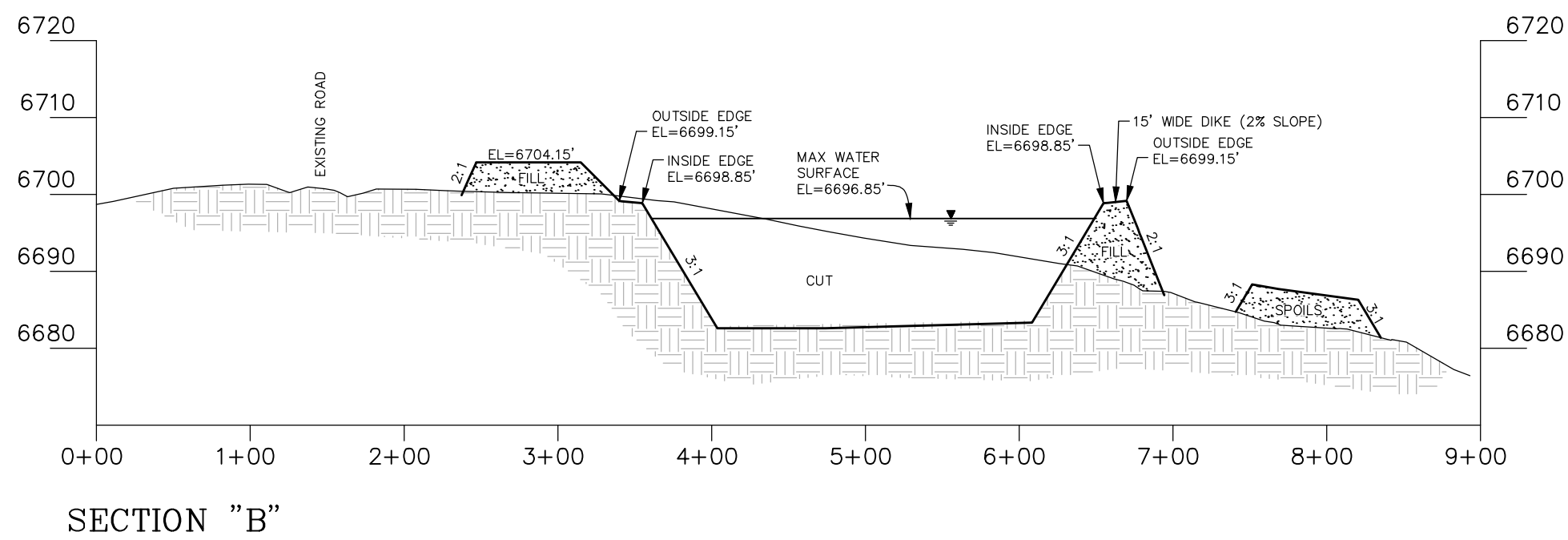
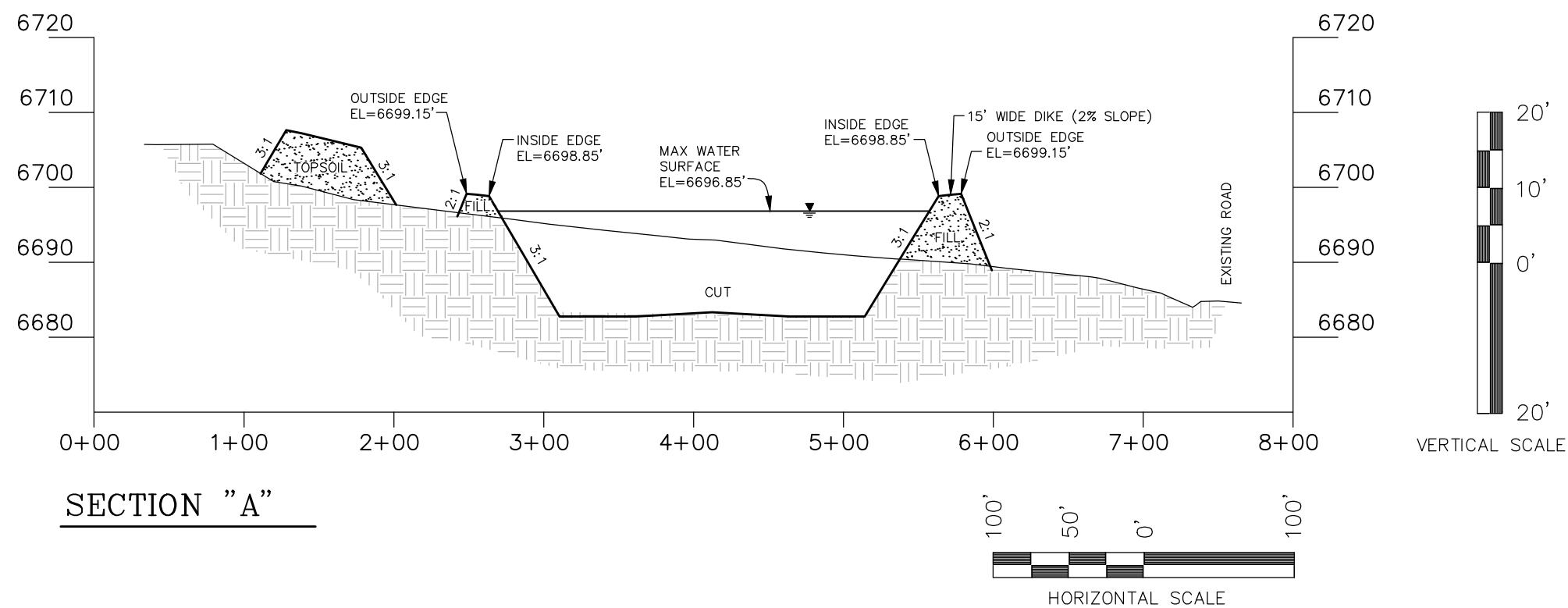


GRADING PLAN

SCALE: 1" = 100'
DRAWN BY: D.G.W.
DATE DRAWN: 11-13-17
UELS FILE NO.: W - 2 1 1 0
PROJ. NO: DOM04-18-0021
FILE: 3 3 1 2 0

SHEET

2



DISTURBANCE AREA
 4.97 ACRES (DISTURBANCE FOOTPRINT)
 6.49 ACRES (FENCED AREA)

EARTHWORK APPROXIMATE YARDAGES
 RAW CUT = 27,713 CU. YDS.
 FILL = 12,652 CU. YDS.
 FILL+10% = 13,918 CU. YDS.
 EXCESS = 13,795 CU. YDS.

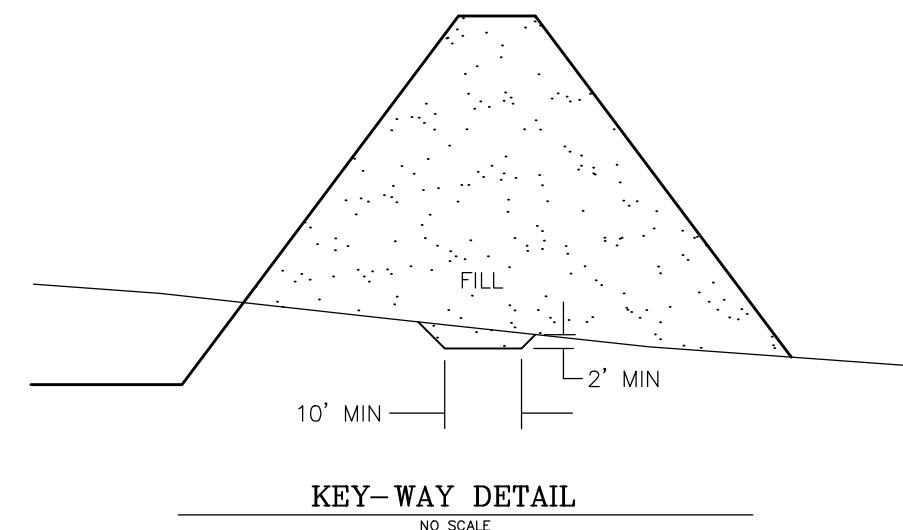
TOP SOIL CUT & STOCKPILE
 RAW CUT = 4,011 CU. YDS.
 Top soil for area within all areas of new disturbance (6" depth)

EVAPORATION POND VOLUME
 POND VOLUME EXCLUDING FREEBOARD
 31,207 cyd, 19.34 acre feet, 150,072 BBL
 SURFACE AREA AT MAX. LIQUID DEPTH
 81,457 SQUARE FEET (1.870 ACRES)

SKIM PIT VOLUME
 POND VOLUME EXCLUDING FREEBOARD
 849 cyd, 0.53 acre feet, 4,085 BBL
 SURFACE AREA AT MAX. LIQUID DEPTH
 4,600 SQUARE FEET (0.106 ACRES)

MAXIMUM DAM HEIGHT
 TOP OF DIKE ELEVATION (AT CENTERLINE) TO
 LOWEST NATURAL GROUND = 10.00 FT

DAM LENGTH
 PERIMETER OF POND (FILL SECTION)
 980 FT



DOMINION ENERGY WEXPRO
POWDER WASH EVAPORATION FACILITY
 LOCATED IN THE NW 1/4 OF
 SECTION 4, T11N, R97W, 6th P.M.
 MOFFAT COUNTY, COLORADO

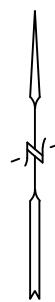
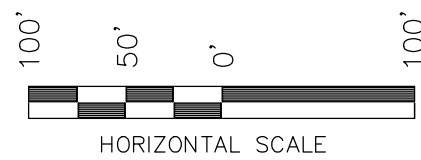
REV	DATE	BY	REVISIONS
1	11-30-17	D.G.W.	60 mil liners, spread out spoils, add gen. skid
2	01-02-18	D.G.W.	add diversion ditches
3	03-13-18	D.G.W.	re-grade pit bottom, add observation sump at SW corner
4	07-02-18	D.G.W.	Add facilities layout
5	07-16-18	D.G.W.	remove generator skid

RESPONSIBLE ENGINEER:

CROSS SECTIONS

SCALE: AS SHOWN
 DRAWN BY: D.G.W.
 DATE DRAWN: 11-13-17
 UELS FILE NO.: W - 2 1 1 0
 PROJ. NO: DOM04-18-0021
 FILE: 3 3 1 2 0

SHEET
3



LINER QUANTITIES

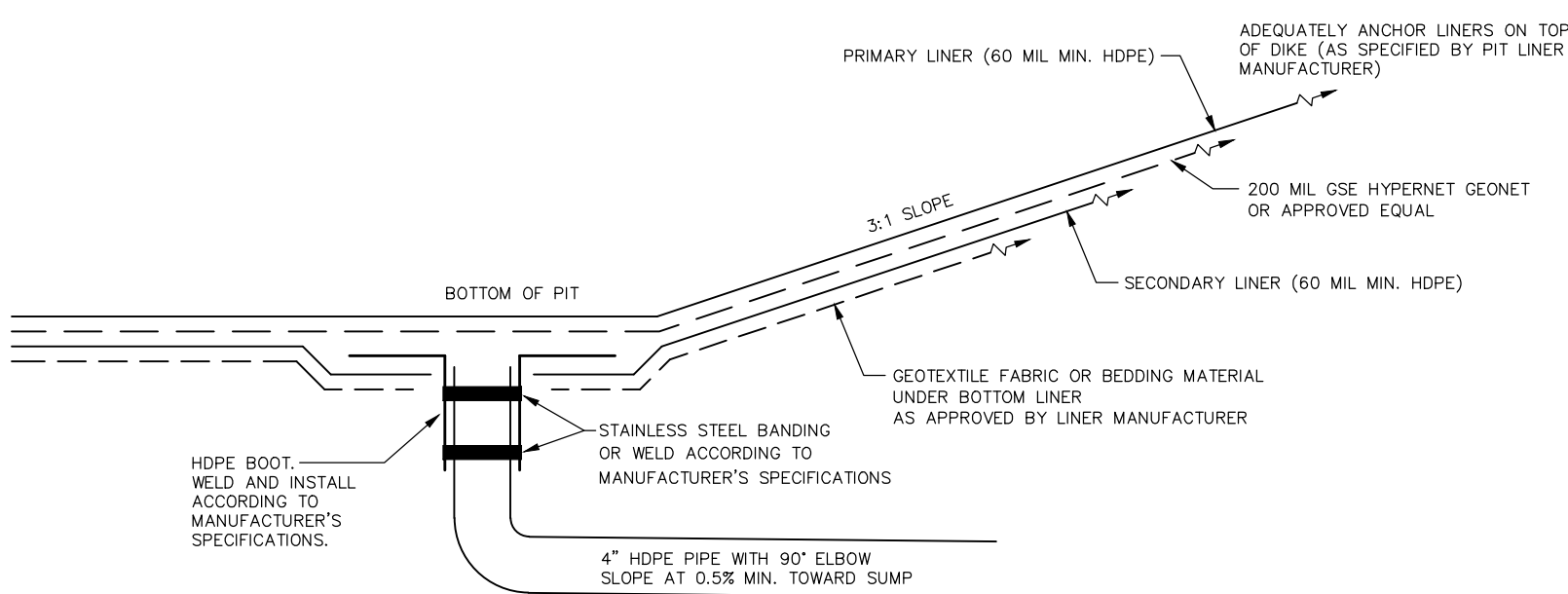
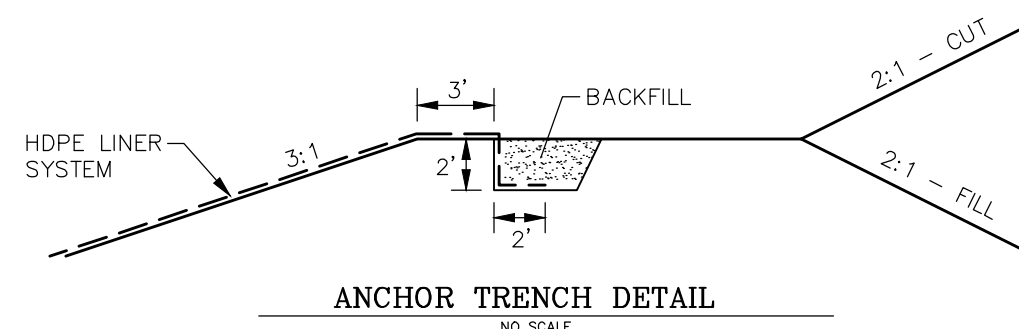
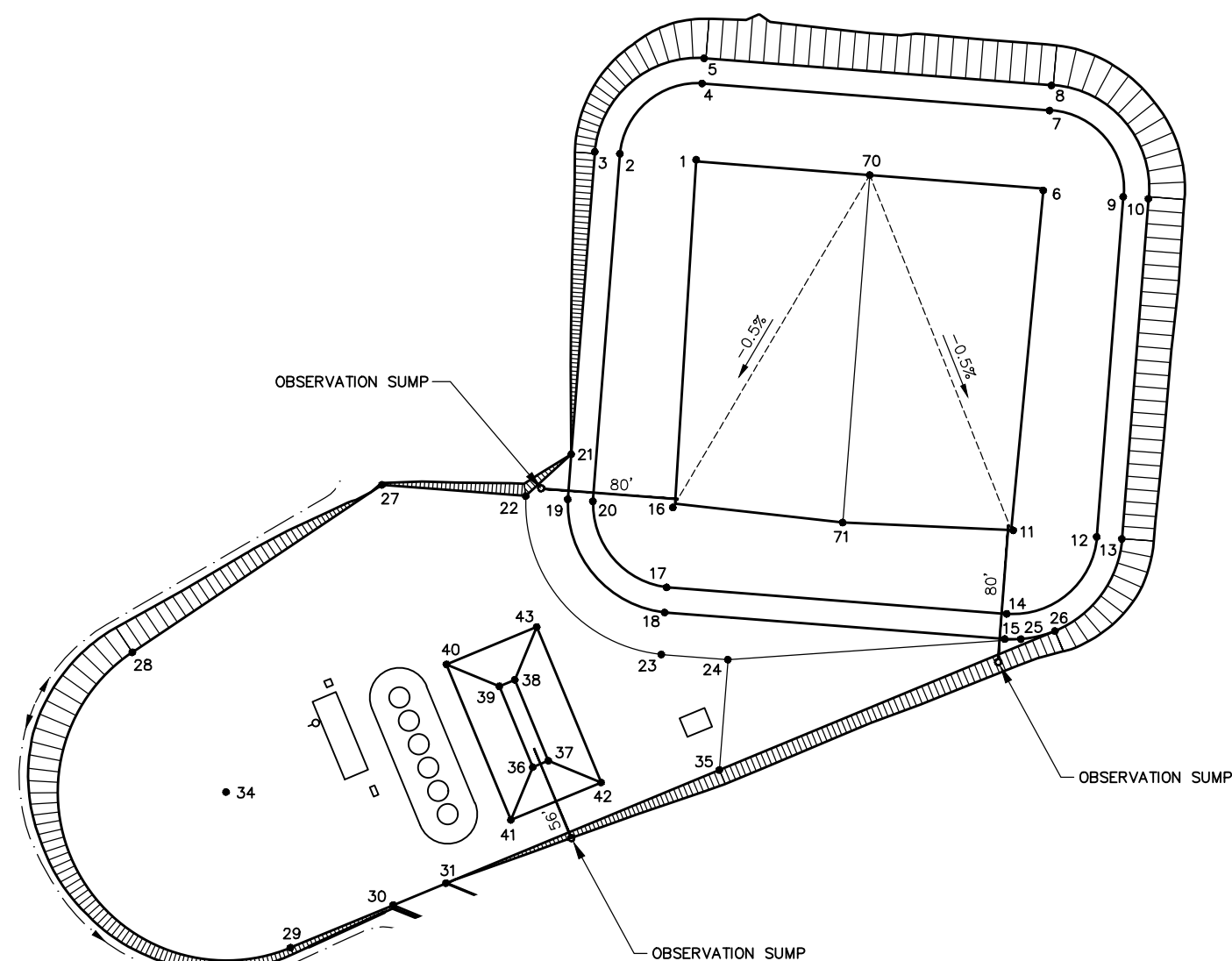
(7 FT AROUND PERIMETER FOR ANCHORAGE, NO ALLOWANCE SHOWN FOR SEAMS OR WASTE)

EVAPORATION POND
98,315 SQ FT
SKIM PIT
8,835 SQ FT
TOTAL
107,150 SQ FT

RECORDKEEPING, REPORTING, AND REPAIRS
THE OBSERVATION SUMP WILL BE CHECKED ACCORDING TO THE COLORADO OIL AND GAS CONSERVATION COMMISSION REQUIREMENTS. IF LIQUID IS FOUND WITHIN THE OBSERVATION SUMP THE FOLLOWING PROCEDURES WILL BE FOLLOWED:
- THE COLORADO OIL AND GAS CONSERVATION COMMISSION WILL BE PROMPTLY INFORMED AND CONSULTED DURING CORRECTIVE ACTION PLANNING.
- IF REPAIRS ARE NECESSARY, ALL REPAIRS WILL BE MADE IN ACCORDANCE WITH THE LINER MANUFACTURERS SPECIFICATIONS.

NOTE

TEXTURED "LADDERS" SHALL BE INSTALLED ON THE INSIDE SLOPE AROUND THE PERIMETER OF THE PONDS SPACED AT 50' O.C. MAX. OR AS APPROVED BY OWNER. LADDER SHALL BE CONSTRUCTED OF 60 MIL HDPE LINER 36" WIDE WITH POLYLOC STRIPS FUSED HORIZONTALLY AT 24" O.C. WITH STUDS FACING OUT. LADDERS SHALL BE FUSED TO PRIMARY LINER. TEXTURED PANELS OR OTHER EMERGENCY EGRESS METHODS MAY BE USED WITH APPROVAL OF THE ENGINEER AND OWNER.

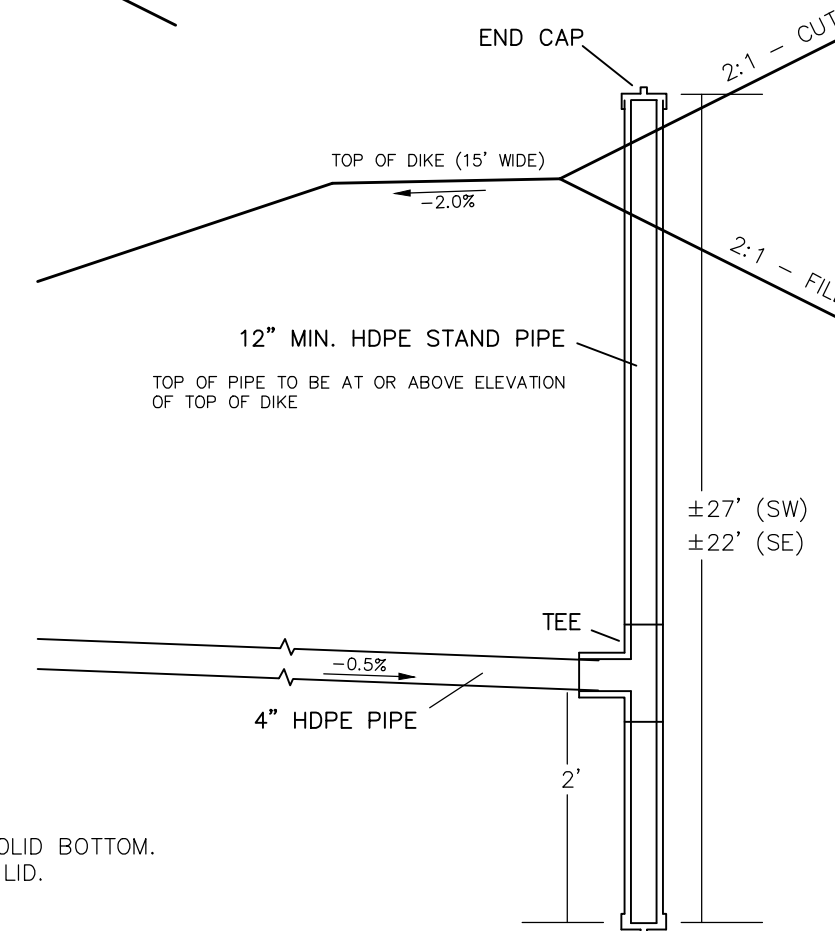


LEAK DETECTION SYSTEM

NO SCALE

OBSERVATION SUMP NOTES

- OBSERVATION SUMP TO BE PIPE STAND WITH SOLID BOTTOM.
- OBSERVATION SUMP WILL HAVE RODENT PROOF LID.
- OBSERVATION SUMP WILL HAVE AN INVERT 2' LOWER THAN THE PIPE INVERT ELEVATION.



OBSERVATION SUMP DETAIL

NO SCALE



CIVIL ENGINEERING AND
LAND SURVEYING SERVICES

85 South 200 East, Vernal, UT 84078
O: 435.789.1017
www.untahgroup.com

- SINCE 1964 -

DOMINION ENERGY WEXPRO

POWDER WASH EVAPORATION FACILITY

LOCATED IN THE NW 1/4 OF
SECTION 4, T11N, R97W, 6th P.M.
MOFFAT COUNTY, COLORADO

REV	DATE	BY	REVISIONS
1	11-20-17	D.G.W.	60 mil liners, spread out pools, add gen. skid
2	01-02-18	D.G.W.	add diversion ditches
3	03-13-18	D.G.W.	re-grade pit bottom, add observation sump at SW corner
4	07-02-18	D.G.W.	Add facilities layout
5	07-16-18	D.G.W.	remove generator skid

RESPONSIBLE ENGINEER:



DETAILS

SCALE: NO SCALE
DRAWN BY: D.G.W.
DATE DRAWN: 11-13-17
UELS FILE NO.: W - 2 1 1 0
PROJ NO: DOM04-18-0021
FILE: 3 3 1 2 0

SHEET

4