

# LEGEND:

- 90° SYMBOL
- PROPOSED WELLHEAD.
- ENTRY POINT.
- BTM PERF.
- TARGET BOTTOM HOLE.
- SECTION CORNERS LOCATED. (NAD 83)

1994 Alum. Cap,  
#25937, 0.6'  
Below Ground  
Lat: 40.029501°  
Long: 104.772733°

1993 Alum. Cap,  
#13155, 0.8'  
Below Ground  
Lat: 40.029513°  
Long: 104.763314°

1997 Alum. Cap,  
#13155, 0.5'  
Below Ground in  
Center of Road  
Lat: 40.029559°  
Long: 104.753874°

1995 Alum. Cap,  
#13482, 0.5'  
Below Ground  
Lat: 40.022229°  
Long: 104.772721°

1991 Alum. Cap,  
#25937, 0.5'  
Below Ground  
Lat: 40.022213°  
Long: 104.753871°

1987 Alum. Cap,  
#12330, 0.8'  
Below Ground in  
Monument Box  
Lat: 40.014958°  
Long: 104.772697°

1995 Alum. Cap,  
#13482, 0.5'  
Below Ground  
Lat: 40.014974°  
Long: 104.763214°

1996 Alum. Cap,  
#23027, 0.4'  
Below Ground in  
Monument Box  
Lat: 40.015026°  
Long: 104.753901°

1995 Alum. Cap,  
#13482, 1.5'  
Below Ground  
Lat: 40.007704°  
Long: 104.772690°

2015 Alum. Cap,  
#38175, 1.0'  
Below Ground  
Lat: 40.007760°  
Long: 104.753869°

T1N  
T1S

2005 Alum. Cap,  
#36060, 0.8'  
Below Ground in  
Monument Box  
Lat: 40.000464°  
Long: 104.772691°

2013 Alum. Cap,  
#38345  
Lat: 40.000492°  
Long: 104.763249°

2002 Alum. Cap,  
#13155, 1.3'  
Below Ground in  
Monument Box  
Lat: 40.000492°  
Long: 104.753837°

Weld Co.  
Adams Co.

| LINE TABLE |             |         |
|------------|-------------|---------|
| LINE       | DIRECTION   | LENGTH  |
| L1         | N89°25'39"E | 100.00' |

RAEL KE 34-042HNX

Elev. Graded Ground = 5115.9'

S89°43'32"W 2656.93' (Meas.)

S89°25'39"W 2609.26' (Meas.)

S89°45'31"W 2641.13' (Meas.)

S89°29'08"W 2644.20' (Meas.)

N00°16'49"W 2649.88' (Meas.)

N00°10'36"W 2676.60' (Meas.)

N00°10'36"W 2676.60' (Meas.)

N00°10'36"W 2676.60' (Meas.)

N00°10'36"W 2676.60' (Meas.)

N00°10'36"W 2676.60' (Meas.)

N00°10'36"W 2676.60' (Meas.)

N00°10'36"W 2676.60' (Meas.)

N00°10'36"W 2676.60' (Meas.)

N00°10'36"W 2676.60' (Meas.)

N00°10'36"W 2676.60' (Meas.)

N00°10'36"W 2676.60' (Meas.)

N00°10'36"W 2676.60' (Meas.)

N00°10'36"W 2676.60' (Meas.)

N00°10'36"W 2676.60' (Meas.)

N00°10'36"W 2676.60' (Meas.)

N00°10'36"W 2676.60' (Meas.)

N00°10'36"W 2676.60' (Meas.)

N00°10'36"W 2676.60' (Meas.)

N00°10'36"W 2676.60' (Meas.)

N00°10'36"W 2676.60' (Meas.)

N00°10'36"W 2676.60' (Meas.)

N00°10'36"W 2676.60' (Meas.)

N00°10'36"W 2676.60' (Meas.)

N00°10'36"W 2676.60' (Meas.)

N00°10'36"W 2676.60' (Meas.)

N00°10'36"W 2676.60' (Meas.)

N00°10'36"W 2676.60' (Meas.)

N00°10'36"W 2676.60' (Meas.)

N00°10'36"W 2676.60' (Meas.)

N00°10'36"W 2676.60' (Meas.)

N00°10'36"W 2676.60' (Meas.)

N00°10'36"W 2676.60' (Meas.)

N00°10'36"W 2676.60' (Meas.)

N00°10'36"W 2676.60' (Meas.)

N00°10'36"W 2676.60' (Meas.)

N00°10'36"W 2676.60' (Meas.)

N00°10'36"W 2676.60' (Meas.)

N00°10'36"W 2676.60' (Meas.)

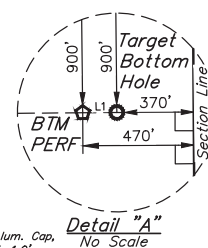
N00°10'36"W 2676.60' (Meas.)

N00°10'36"W 2676.60' (Meas.)

N00°10'36"W 2676.60' (Meas.)

N00°10'36"W 2676.60' (Meas.)

See Detail "A"  
© Right



PDOP = 1.2



| NAD 83 (SURFACE LOCATION)               | NAD 83 (ENTRY POINT)                    | NAD 83 (BTM PERF)                       | NAD 83 (TARGET BOTTOM HOLE)             |
|---|---|---|---|
| LATITUDE = 40°00'57.02" (40.015838°)    | LATITUDE = 40°00'44.97" (40.012491°)    | LATITUDE = 40°00'45.17" (40.012547°)    | LATITUDE = 40°00'45.17" (40.012549°)    |
| LONGITUDE = 104°46'15.58" (104.770996°) | LONGITUDE = 104°46'15.79" (104.771053°) | LONGITUDE = 104°45'20.04" (104.755568°) | LONGITUDE = 104°45'18.76" (104.755211°) |
| NAD 27 (SURFACE LOCATION)               | NAD 27 (ENTRY POINT)                    | NAD 27 (BTM PERF)                       | NAD 27 (TARGET BOTTOM HOLE)             |
| LATITUDE = 40°00'57.08" (40.015855°)    | LATITUDE = 40°00'45.03" (40.012507°)    | LATITUDE = 40°00'45.23" (40.012563°)    | LATITUDE = 40°00'45.23" (40.012565°)    |
| LONGITUDE = 104°46'13.69" (104.770470°) | LONGITUDE = 104°46'13.90" (104.770527°) | LONGITUDE = 104°45'18.15" (104.755042°) | LONGITUDE = 104°45'16.87" (104.754685°) |

## BASIS OF BEARINGS

TRANSVERSE MERCATOR PROJECTION WITH A CENTRAL MERIDIAN OF W105°00'00".

## BASIS OF ELEVATION

OPUS SOLUTION GENERATED NAVD 88



UELS, LLC  
Corporate Office \* 85 South 200 East  
Vernal, UT 84078 \* (435) 789-1017



## GREAT WESTERN OPERATING COMPANY

RAEL KE 34-042HNX  
SW 1/4 SW 1/4, SECTION 27, T1N, R66W, 6th P.M.  
WELD COUNTY, COLORADO

|             |                      |          |            |
|-------------|----------------------|----------|------------|
| SURVEYED BY | MATTHEW MILLER, N.W. | 05-10-18 | SCALE      |
| DRAWN BY    | K.B.                 | 05-22-18 | 1" = 1000' |

## WELL LOCATION PLAT

CERTIFICATE OF SURVEY  
THIS IS TO CERTIFY THAT THE ABOVE DESCRIBED SURVEY WAS MADE IN ACCORDANCE WITH THE NOTES OF ACTUAL SURVEYS MADE IN ACCORDANCE WITH MY SURVEYING PRACTICE AND THAT THE SAME ARE TRUE AND CORRECT TO THE BEST OF MY KNOWLEDGE AND BELIEF.

