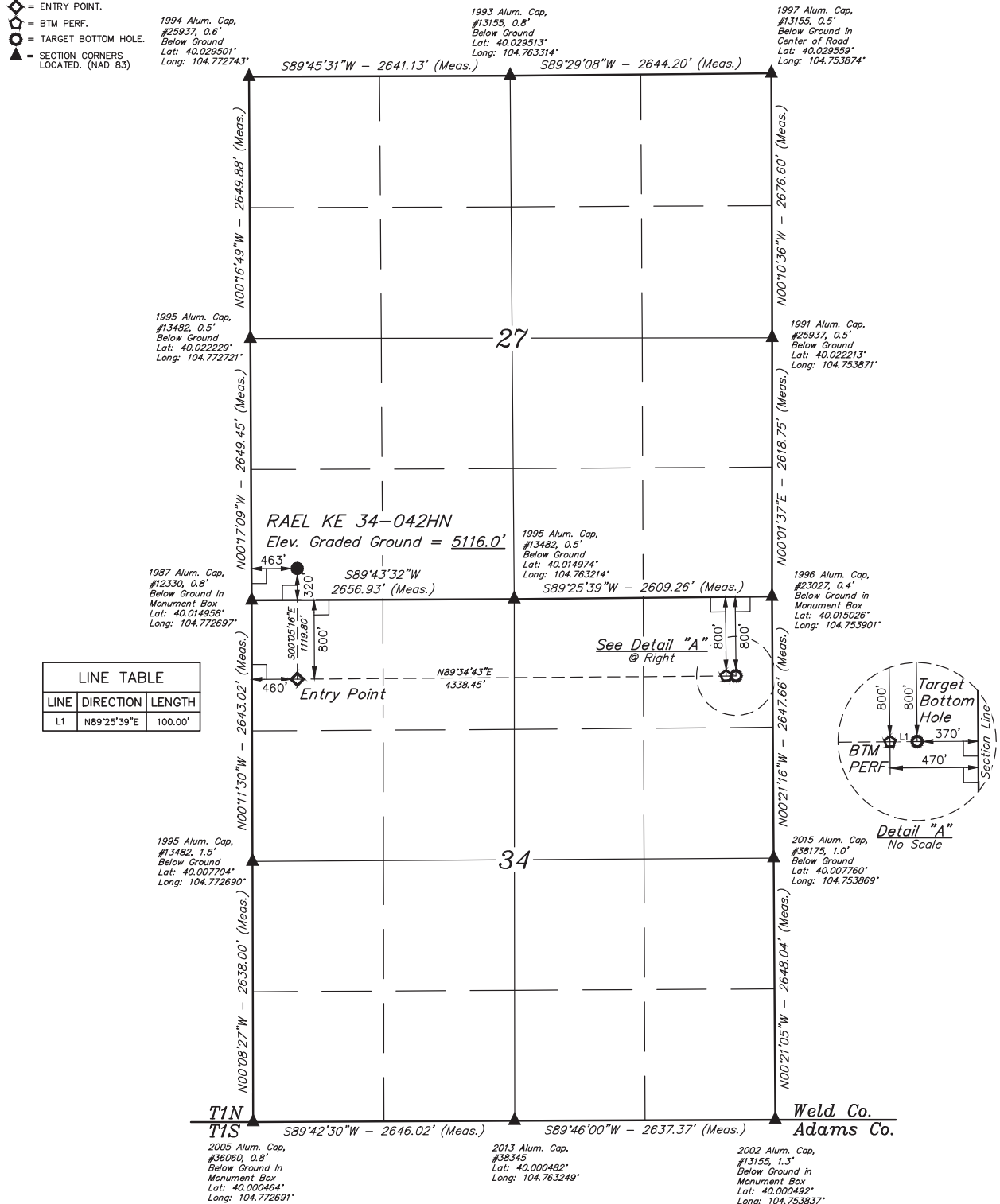


# LEGEND:

- 90° SYMBOL
- PROPOSED WELLHEAD.
- ENTRY POINT.
- BTM PERF.
- TARGET BOTTOM HOLE.
- SECTION CORNERS LOCATED. (NAD 83)

T1N, R66W, 6th P.M.



PDOP = 1.2



<b>NAD 83 (SURFACE LOCATION)</b> LATITUDE = 40°00'57.02" (40.015838°) LONGITUDE = 104°46'15.78" (104.771049°)	<b>NAD 83 (ENTRY POINT)</b> LATITUDE = 40°00'45.95" (40.012765°) LONGITUDE = 104°46'15.79" (104.771053°)	<b>NAD 83 (BTM PERF)</b> LATITUDE = 40°00'46.16" (40.012821°) LONGITUDE = 104°45'20.05" (104.755569°)	<b>NAD 83 (TARGET BOTTOM HOLE)</b> LATITUDE = 40°00'46.16" (40.012823°) LONGITUDE = 104°45'18.76" (104.755212°)
<b>NAD 27 (SURFACE LOCATION)</b> LATITUDE = 40°00'57.08" (40.015855°) LONGITUDE = 104°46'13.88" (104.770523°)	<b>NAD 27 (ENTRY POINT)</b> LATITUDE = 40°00'46.01" (40.012782°) LONGITUDE = 104°46'13.90" (104.770527°)	<b>NAD 27 (BTM PERF)</b> LATITUDE = 40°00'46.22" (40.012838°) LONGITUDE = 104°45'18.16" (104.755043°)	<b>NAD 27 (TARGET BOTTOM HOLE)</b> LATITUDE = 40°00'46.22" (40.012840°) LONGITUDE = 104°45'16.87" (104.754687°)

## BASIS OF BEARINGS

TRANSVERSE MERCATOR PROJECTION WITH A CENTRAL MERIDIAN OF W105°00'00".

## BASIS OF ELEVATION

OPUS SOLUTION GENERATED NAVD 88



**UELS, LLC**  
Corporate Office \* 85 South 200 East  
Vernal, UT 84078 \* (435) 789-1017



## GREAT WESTERN OPERATING COMPANY

**RAEL KE 34-042HN**  
SW 1/4 SW 1/4, SECTION 27, T1N, R66W, 6th P.M.  
WELD COUNTY, COLORADO

SURVEYED BY	MATTHEW MILLER, N.W.	05-10-18	SCALE
DRAWN BY	K.B.	05-22-18	1" = 1000'

## WELL LOCATION PLAT

CERTIFICATE  
THIS IS TO CERTIFY THAT THE ABOVE IS A TRUE AND CORRECT COPY OF THE ORIGINAL SURVEY PLAT AND THAT THE SAME ARE TRUE AND CORRECT TO THE BEST OF MY KNOWLEDGE AND BELIEF.

