

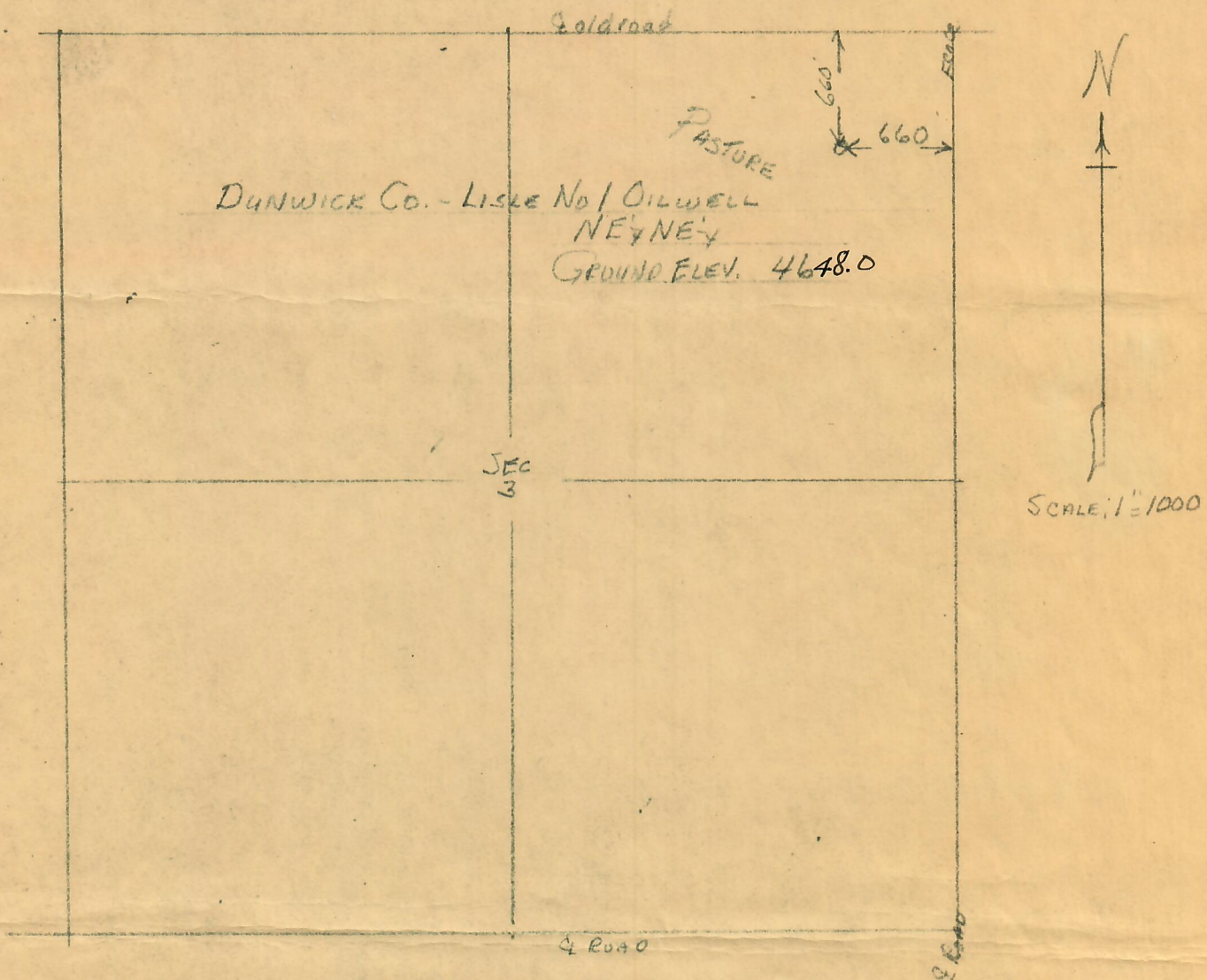
CERTIFICATE OF SURVEY  
for  
Dunwick Co. mpany  
Morgan County, Colorado



00150796

RECEIVED  
SEP 14 1970  
COLO. OIL & GAS CONS. COMM.

T5N R58W 6PM.



I hereby certify that the above plat is an accurate representation of a correct survey showing the location of Dunwick Co.-Lisle No. 1 Oilwell in NE 1/4 NE 1/4 Sec. 3 T5N R58W 6PM. The elevation of the ground at the stake is 4648.0 feet above sea level from U.S.G.S, Bench Mark.

Fert Morgan, Colorado  
Sept. 10, 1970

*Bevil J. Osborne*  
Registered Professional Engineer  
State of Colorado