

PROJECT DETAILS: Garfield County, CO

Geodetic System: US State Plane 1983
Datum: North American Datum 1983
Ellipsoid: GRS 1980
Zone: Colorado Central Zone
System Datum: Mean Sea Level

WELL DETAILS: CC 0697-03-17E

+N-S 0.0 +E-W 0.0 Northing 1639563.16 Easting 2237398.62 8428.0 Latitude 39.558215 Longitude -108.205130

Project: Garfield County, CO
Site: CC 0697-03-07 Pad
Well: CC 0697-03-17E
Wellbore: Wellbore #1
Design: Design #5
Latitude: 39.558215
Longitude: -108.205130
Ground Level: 8428.0
well @ 8458.0usft (30' RKB)



DIRECTIONAL DRILLING



REFERENCE INFORMATION

Co-ordinate (N/E) Reference: Well CC 0697-03-17E, True North
Vertical (TVD) Reference: well @ 8458.0usft (30' RKB)
Section (VS) Reference: Slot - (0.0N, 0.0E)
Measured Depth Reference: well @ 8458.0usft (30' RKB)
Calculation Method: Minimum Curvature

FORMATION TDP DETAILS

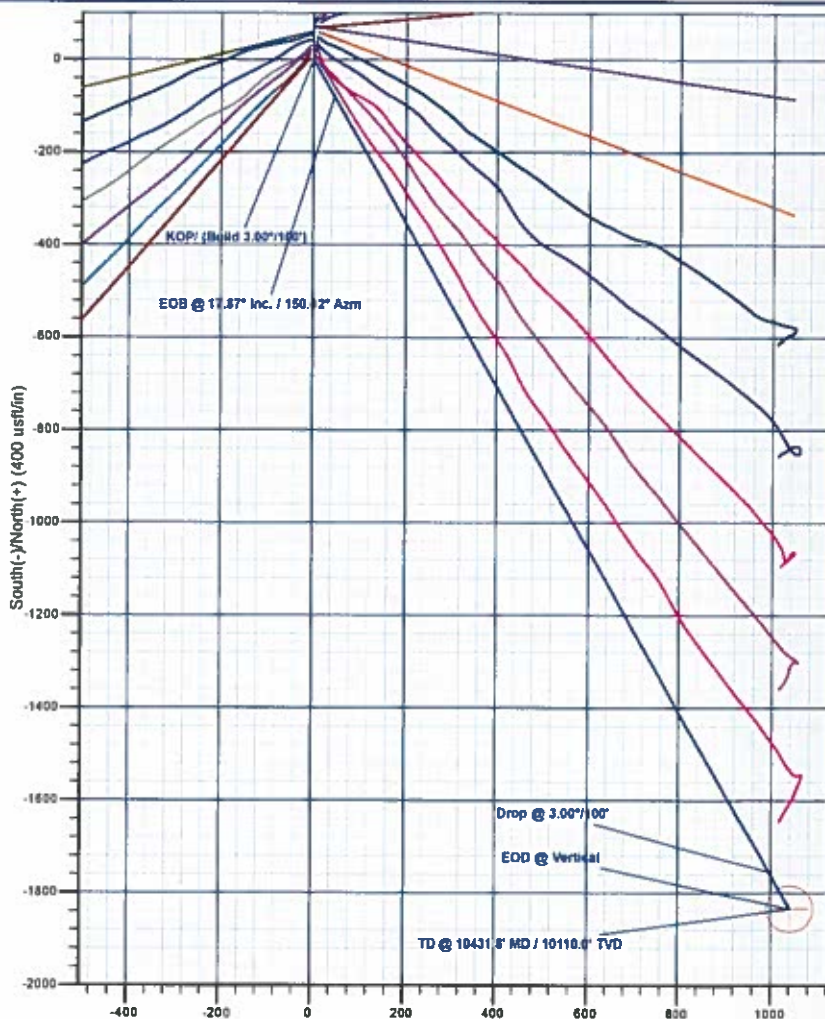
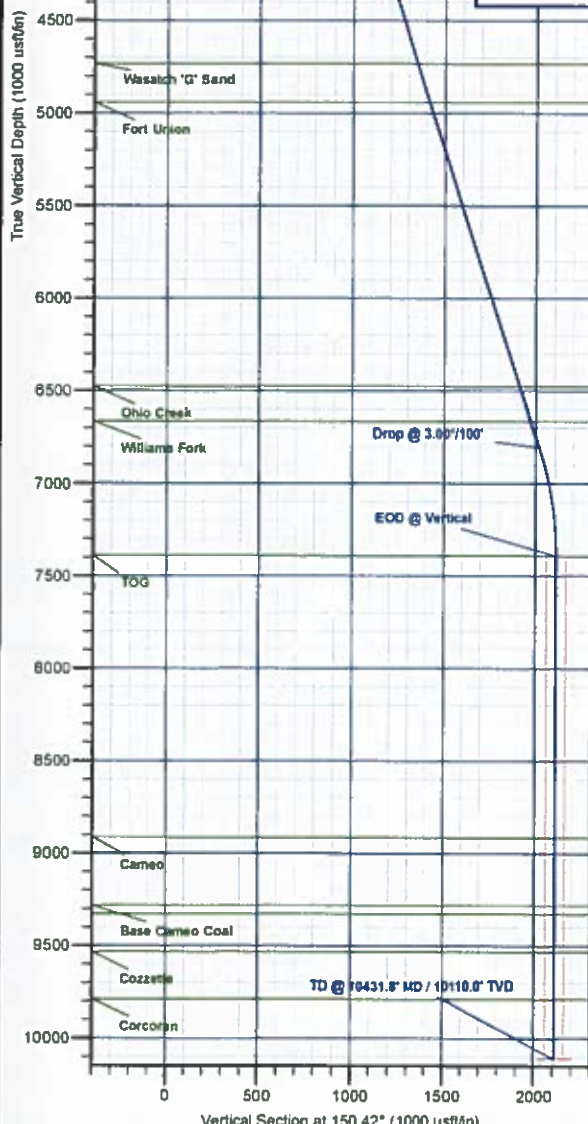
TVDPath	MDPath	Formation
975.0	991.7	Mahogany
2943.0	3059.4	Wasatch
4733.0	4940.2	Wasatch 'G' Sand
4943.0	5160.8	Fort Union
6477.0	6772.6	Ohio Creek
6668.0	6970.1	Williams Fork
7391.0	7712.8	TOG
8915.0	9236.8	Cameo
9232.0	9803.8	Base Cameo Coal
9328.0	9849.8	Rollins
9633.0	9864.8	Cozzette

DESIGN TARGET DETAILS

Name	TVD	+N-S	+E-W	Northing	Easting	Latitude	Longitude
PBHL DM4 - CC 0697-03-17E	10110.0	-1834.1	1041.0	1637698.91	2238384.51	39.553180	-108.201438

SECTION DETAILS

MD	Inc	Azi	TVD	+N-S	+E-W	Dieg	TFace	VSEct	Annotation
0.0	0.00	0.00	0.0	0.0	0.0	0.00	0.00	0.0	KOP/ (Build 3.00"/100')
250.0	0.00	0.00	250.0	0.0	0.0	0.00	0.00	0.0	EOB @ 17.87" Inc. / 150.42" Azm
845.7	17.87	180.42	836.1	-80.1	45.5	3.00	150.42	92.2	Drop @ 3.00"/100'
7117.1	17.87	150.42	6904.9	-1783.9	995.5	0.00	0.00	2016.7	EOB @ Vertical
7712.8	0.00	0.00	7391.0	-1834.1	1041.0	3.00	180.00	2108.9	TD @ 10431.8' MD / 10110.0' TVD
10431.8	0.00	0.00	10110.0	-1834.1	1041.0	0.00	0.00	2108.9	



Plan: Design #5 (CC 0697-03-17E/Wellbore #1)

Created By: Will Jircik

Date: 17:38, July 23 2018



Laramie Energy, LLC

Garfield County, CO

CC 0697-03-07 Pad

CC 0697-03-17E

Wellbore #1

Plan: Design #5

QES Well Planning Report

23 July, 2018





Well Planning Report



Database:	EDM 5000.1 Single User Db	Local Co-ordinate Reference:	Well CC 0697-03-17E
Company:	Laramie Energy, LLC	TVD Reference:	well @ 8458.0usft (30' RKB)
Project:	Garfield County, CO	MD Reference:	well @ 8458.0usft (30' RKB)
Site:	CC 0697-03-07 Pad	North Reference:	True
Well:	CC 0697-03-17E	Survey Calculation Method:	Minimum Curvature
Wellbore:	Wellbore #1		
Design:	Design #5		

Project	Garfield County, CO		
Map System:	US State Plane 1983	System Datum:	Mean Sea Level
Geo Datum:	North American Datum 1983		
Map Zone:	Colorado Central Zone		

Site	CC 0697-03-07 Pad		
Site Position:		Northing:	1,638,132.66 usft
From:	Lat/Long	Easting:	2,236,874.96 usft
Position Uncertainty:	0.0 usft	Slot Radius:	13-3/16 "
		Latitude:	39.554247
		Longitude:	-108.206835
		Grid Convergence:	-1.71 "

Well	CC 0697-03-17E		
Well Position	+N/-S	1,445.5 usft	Northing: 1,639,563.15 usft
	+E/-W	480.8 usft	Easting: 2,237,398.62 usft
Position Uncertainty	0.0 usft	Wellhead Elevation:	Latitude: 39.558215
			Longitude: -108.205130
			Ground Level: 8,428.0 usft

Wellbore	Wellbore #1				
Magnetics	Model Name	Sample Date	Declination (°)	Dip Angle (°)	Field Strength (nT)
	IGRF2015	8/30/2017	9.78	65.60	51,493.66872979

Design	Design #5			
Audit Notes:				
Version:	Phase:	PLAN		Tie On Depth: 0.0
Vertical Section:	Depth From (TVD) (usft)	+N/-S (usft)	+E/-W (usft)	Direction (°)
	0.0	0.0	0.0	150.42

Plan Sections										
Measured Depth (usft)	Inclination (°)	Azimuth (°)	Vertical Depth (usft)	+N/-S (usft)	+E/-W (usft)	Dogleg Rate (°/100usft)	Build Rate (°/100usft)	Turn Rate (°/100usft)	TFO (°)	Target
0.0	0.00	0.00	0.0	0.0	0.0	0.00	0.00	0.00	0.00	
250.0	0.00	0.00	250.0	0.0	0.0	0.00	0.00	0.00	0.00	
845.7	17.87	150.42	836.1	-80.1	45.5	3.00	3.00	0.00	150.42	
7,117.1	17.87	150.42	6,804.9	-1,753.9	995.5	0.00	0.00	0.00	0.00	
7,712.8	0.00	0.00	7,391.0	-1,834.1	1,041.0	3.00	-3.00	0.00	180.00	
10,431.8	0.00	0.00	10,110.0	-1,834.1	1,041.0	0.00	0.00	0.00	0.00	PBHL D#4 - CC 06!



Well Planning Report



Database: EDM 5000.1 Single User Db
Company: Laramie Energy, LLC
Project: Garfield County, CO
Site: CC 0697-03-07 Pad
Well: CC 0697-03-17E
Wellbore: Wellbore #1
Design: Design #5

Local Co-ordinate Reference: Well CC 0697-03-17E
TVD Reference: well @ 8458.0usft (30' RKB)
MD Reference: well @ 8458.0usft (30' RKB)
North Reference: True
Survey Calculation Method: Minimum Curvature

Planned Survey

Measured Depth (usft)	Inclination (°)	Azimuth (°)	Vertical Depth (usft)	+N/-S (usft)	+E/-W (usft)	Vertical Section (usft)	Dogleg Rate (°/100usft)	Build Rate (°/100usft)	Turn Rate (°/100usft)
0.0	0.00	0.00	0.0	0.0	0.0	0.0	0.00	0.00	0.00
100.0	0.00	0.00	100.0	0.0	0.0	0.0	0.00	0.00	0.00
200.0	0.00	0.00	200.0	0.0	0.0	0.0	0.00	0.00	0.00
KOP/ (Build 3.00°/100')									
250.0	0.00	0.00	250.0	0.0	0.0	0.0	0.00	0.00	0.00
300.0	1.50	150.42	300.0	-0.6	0.3	0.7	3.00	3.00	0.00
400.0	4.50	150.42	399.8	-5.1	2.9	5.9	3.00	3.00	0.00
500.0	7.50	150.42	499.3	-14.2	8.1	16.3	3.00	3.00	0.00
600.0	10.50	150.42	598.0	-27.8	15.8	32.0	3.00	3.00	0.00
700.0	13.50	150.42	695.8	-45.9	26.0	52.8	3.00	3.00	0.00
800.0	16.50	150.42	792.4	-68.4	38.8	78.6	3.00	3.00	0.00
EOB @ 17.87° Inc. / 150.42° Azm									
845.7	17.87	150.42	836.1	-80.1	45.5	92.2	3.00	3.00	0.00
900.0	17.87	150.42	887.8	-94.6	53.7	108.8	0.00	0.00	0.00
Mahogany									
991.7	17.87	150.42	975.0	-119.1	67.6	136.9	0.00	0.00	0.00
1,000.0	17.87	150.42	982.9	-121.3	68.9	139.5	0.00	0.00	0.00
1,100.0	17.87	150.42	1,078.1	-148.0	84.0	170.2	0.00	0.00	0.00
1,200.0	17.87	150.42	1,173.3	-174.7	99.2	200.9	0.00	0.00	0.00
1,300.0	17.87	150.42	1,268.5	-201.4	114.3	231.6	0.00	0.00	0.00
1,400.0	17.87	150.42	1,363.6	-228.1	129.5	262.3	0.00	0.00	0.00
1,500.0	17.87	150.42	1,458.8	-254.8	144.6	292.9	0.00	0.00	0.00
1,600.0	17.87	150.42	1,554.0	-281.5	159.7	323.6	0.00	0.00	0.00
1,700.0	17.87	150.42	1,649.2	-308.1	174.9	354.3	0.00	0.00	0.00
1,800.0	17.87	150.42	1,744.3	-334.8	190.0	385.0	0.00	0.00	0.00
1,900.0	17.87	150.42	1,839.5	-361.5	205.2	415.7	0.00	0.00	0.00
2,000.0	17.87	150.42	1,934.7	-388.2	220.3	446.4	0.00	0.00	0.00
2,100.0	17.87	150.42	2,029.9	-414.9	235.5	477.1	0.00	0.00	0.00
2,200.0	17.87	150.42	2,125.0	-441.6	250.6	507.8	0.00	0.00	0.00
2,300.0	17.87	150.42	2,220.2	-468.3	265.8	538.4	0.00	0.00	0.00
2,400.0	17.87	150.42	2,315.4	-495.0	280.9	569.1	0.00	0.00	0.00
2,500.0	17.87	150.42	2,410.6	-521.7	296.1	599.8	0.00	0.00	0.00
9 5/8"									
2,530.0	17.87	150.42	2,439.1	-529.7	300.6	609.0	0.00	0.00	0.00
2,600.0	17.87	150.42	2,505.7	-548.3	311.2	630.5	0.00	0.00	0.00
2,700.0	17.87	150.42	2,600.9	-575.0	326.4	661.2	0.00	0.00	0.00
2,800.0	17.87	150.42	2,696.1	-601.7	341.5	691.9	0.00	0.00	0.00
2,900.0	17.87	150.42	2,791.3	-628.4	356.7	722.6	0.00	0.00	0.00
3,000.0	17.87	150.42	2,886.4	-655.1	371.8	753.3	0.00	0.00	0.00
Wasatch									
3,059.4	17.87	150.42	2,943.0	-671.0	380.8	771.5	0.00	0.00	0.00
3,100.0	17.87	150.42	2,981.6	-681.8	387.0	784.0	0.00	0.00	0.00
3,200.0	17.87	150.42	3,076.8	-708.5	402.1	814.6	0.00	0.00	0.00
3,300.0	17.87	150.42	3,172.0	-735.2	417.3	845.3	0.00	0.00	0.00
3,400.0	17.87	150.42	3,267.1	-761.9	432.4	876.0	0.00	0.00	0.00
3,500.0	17.87	150.42	3,362.3	-788.5	447.6	906.7	0.00	0.00	0.00
3,600.0	17.87	150.42	3,457.5	-815.2	462.7	937.4	0.00	0.00	0.00
3,700.0	17.87	150.42	3,552.7	-841.9	477.8	968.1	0.00	0.00	0.00
3,800.0	17.87	150.42	3,647.8	-868.6	493.0	998.8	0.00	0.00	0.00
3,900.0	17.87	150.42	3,743.0	-895.3	508.1	1,029.5	0.00	0.00	0.00
4,000.0	17.87	150.42	3,838.2	-922.0	523.3	1,060.1	0.00	0.00	0.00
4,100.0	17.87	150.42	3,933.4	-948.7	538.4	1,090.8	0.00	0.00	0.00
4,200.0	17.87	150.42	4,028.5	-975.4	553.6	1,121.5	0.00	0.00	0.00
4,300.0	17.87	150.42	4,123.7	-1,002.1	568.7	1,152.2	0.00	0.00	0.00



Well Planning Report



Database: EDM 5000.1 Single User Db
Company: Laramie Energy, LLC
Project: Garfield County, CO
Site: CC 0697-03-07 Pad
Well: CC 0697-03-17E
Wellbore: Wellbore #1
Design: Design #5

Local Co-ordinate Reference: Well CC 0697-03-17E
TVD Reference: well @ 8458.0usft (30' RKB)
MD Reference: well @ 8458.0usft (30' RKB)
North Reference: True
Survey Calculation Method: Minimum Curvature

Planned Survey

Measured Depth (usft)	Inclination (°)	Azimuth (°)	Vertical Depth (usft)	+N/-S (usft)	+E/-W (usft)	Vertical Section (usft)	Dogleg Rate (°/100usft)	Build Rate (°/100usft)	Turn Rate (°/100usft)
4,400.0	17.87	150.42	4,218.9	-1,028.7	583.9	1,182.9	0.00	0.00	0.00
4,500.0	17.87	150.42	4,314.1	-1,055.4	599.0	1,213.6	0.00	0.00	0.00
4,600.0	17.87	150.42	4,409.2	-1,082.1	614.2	1,244.3	0.00	0.00	0.00
4,700.0	17.87	150.42	4,504.4	-1,108.8	629.3	1,275.0	0.00	0.00	0.00
4,800.0	17.87	150.42	4,599.6	-1,135.5	644.5	1,305.6	0.00	0.00	0.00
4,900.0	17.87	150.42	4,694.8	-1,162.2	659.6	1,336.3	0.00	0.00	0.00
Wasatch 'G' Sand									
4,940.2	17.87	150.42	4,733.0	-1,172.9	665.7	1,348.7	0.00	0.00	0.00
5,000.0	17.87	150.42	4,789.9	-1,188.9	674.8	1,367.0	0.00	0.00	0.00
5,100.0	17.87	150.42	4,885.1	-1,215.6	689.9	1,397.7	0.00	0.00	0.00
Fort Union									
5,160.8	17.87	150.42	4,943.0	-1,231.8	699.1	1,416.4	0.00	0.00	0.00
5,200.0	17.87	150.42	4,980.3	-1,242.3	705.1	1,428.4	0.00	0.00	0.00
5,300.0	17.87	150.42	5,075.5	-1,269.0	720.2	1,459.1	0.00	0.00	0.00
5,400.0	17.87	150.42	5,170.6	-1,295.6	735.4	1,489.8	0.00	0.00	0.00
5,500.0	17.87	150.42	5,265.8	-1,322.3	750.5	1,520.5	0.00	0.00	0.00
5,600.0	17.87	150.42	5,361.0	-1,349.0	765.7	1,551.2	0.00	0.00	0.00
5,700.0	17.87	150.42	5,456.2	-1,375.7	780.8	1,581.8	0.00	0.00	0.00
5,800.0	17.87	150.42	5,551.3	-1,402.4	796.0	1,612.5	0.00	0.00	0.00
5,900.0	17.87	150.42	5,646.5	-1,429.1	811.1	1,643.2	0.00	0.00	0.00
6,000.0	17.87	150.42	5,741.7	-1,455.8	826.2	1,673.9	0.00	0.00	0.00
6,100.0	17.87	150.42	5,836.9	-1,482.5	841.4	1,704.6	0.00	0.00	0.00
6,200.0	17.87	150.42	5,932.0	-1,509.2	856.5	1,735.3	0.00	0.00	0.00
6,300.0	17.87	150.42	6,027.2	-1,535.8	871.7	1,766.0	0.00	0.00	0.00
6,400.0	17.87	150.42	6,122.4	-1,562.5	886.8	1,796.7	0.00	0.00	0.00
6,500.0	17.87	150.42	6,217.6	-1,589.2	902.0	1,827.3	0.00	0.00	0.00
6,600.0	17.87	150.42	6,312.7	-1,615.9	917.1	1,858.0	0.00	0.00	0.00
6,700.0	17.87	150.42	6,407.9	-1,642.6	932.3	1,888.7	0.00	0.00	0.00
Ohio Creek									
6,772.6	17.87	150.42	6,477.0	-1,662.0	943.3	1,911.0	0.00	0.00	0.00
6,800.0	17.87	150.42	6,503.1	-1,669.3	947.4	1,919.4	0.00	0.00	0.00
6,900.0	17.87	150.42	6,598.3	-1,696.0	962.6	1,950.1	0.00	0.00	0.00
Williams Fork									
6,970.1	17.87	150.42	6,665.0	-1,714.7	973.2	1,971.6	0.00	0.00	0.00
7,000.0	17.87	150.42	6,693.4	-1,722.7	977.7	1,980.8	0.00	0.00	0.00
7,100.0	17.87	150.42	6,788.6	-1,749.4	992.9	2,011.5	0.00	0.00	0.00
Drop @ 3.00°/100'									
7,117.1	17.87	150.42	6,804.9	-1,753.9	995.5	2,016.7	0.00	0.00	0.00
7,200.0	15.38	150.42	6,884.3	-1,774.5	1,007.2	2,040.4	3.00	-3.00	0.00
7,300.0	12.38	150.42	6,981.4	-1,795.4	1,019.0	2,064.4	3.00	-3.00	0.00
7,400.0	9.38	150.42	7,079.6	-1,811.8	1,028.3	2,083.3	3.00	-3.00	0.00
7,500.0	6.38	150.42	7,178.6	-1,823.8	1,035.1	2,097.0	3.00	-3.00	0.00
7,600.0	3.38	150.42	7,278.2	-1,831.2	1,039.3	2,105.6	3.00	-3.00	0.00
7,700.0	0.38	150.42	7,378.2	-1,834.0	1,040.9	2,108.8	3.00	-3.00	0.00
EOD @ Vertical - TOG									
7,712.8	0.00	0.00	7,391.0	-1,834.1	1,041.0	2,108.9	3.00	-3.00	0.00
7,800.0	0.00	0.00	7,478.2	-1,834.1	1,041.0	2,108.9	0.00	0.00	0.00
7,900.0	0.00	0.00	7,578.2	-1,834.1	1,041.0	2,108.9	0.00	0.00	0.00
8,000.0	0.00	0.00	7,678.2	-1,834.1	1,041.0	2,108.9	0.00	0.00	0.00
8,100.0	0.00	0.00	7,778.2	-1,834.1	1,041.0	2,108.9	0.00	0.00	0.00
8,200.0	0.00	0.00	7,878.2	-1,834.1	1,041.0	2,108.9	0.00	0.00	0.00
8,300.0	0.00	0.00	7,978.2	-1,834.1	1,041.0	2,108.9	0.00	0.00	0.00
8,400.0	0.00	0.00	8,078.2	-1,834.1	1,041.0	2,108.9	0.00	0.00	0.00



Well Planning Report



Database:	EDM 5000.1 Single User Db	Local Co-ordinate Reference:	Well CC 0697-03-17E
Company:	Laramie Energy, LLC	TVD Reference:	well @ 8458.0usft (30' RKB)
Project:	Garfield County, CO	MD Reference:	well @ 8458.0usft (30' RKB)
Site:	CC 0697-03-07 Pad	North Reference:	True
Well:	CC 0697-03-17E	Survey Calculation Method:	Minimum Curvature
Wellbore:	Wellbore #1		
Design:	Design #5		

Planned Survey

Measured Depth (usft)	Inclination (°)	Azimuth (°)	Vertical Depth (usft)	+N/-S (usft)	+E/-W (usft)	Vertical Section (usft)	Dogleg Rate (°/100usft)	Build Rate (°/100usft)	Turn Rate (°/100usft)
8,500.0	0.00	0.00	8,178.2	-1,834.1	1,041.0	2,108.9	0.00	0.00	0.00
8,600.0	0.00	0.00	8,278.2	-1,834.1	1,041.0	2,108.9	0.00	0.00	0.00
8,700.0	0.00	0.00	8,378.2	-1,834.1	1,041.0	2,108.9	0.00	0.00	0.00
8,800.0	0.00	0.00	8,478.2	-1,834.1	1,041.0	2,108.9	0.00	0.00	0.00
8,900.0	0.00	0.00	8,578.2	-1,834.1	1,041.0	2,108.9	0.00	0.00	0.00
9,000.0	0.00	0.00	8,678.2	-1,834.1	1,041.0	2,108.9	0.00	0.00	0.00
9,100.0	0.00	0.00	8,778.2	-1,834.1	1,041.0	2,108.9	0.00	0.00	0.00
9,200.0	0.00	0.00	8,878.2	-1,834.1	1,041.0	2,108.9	0.00	0.00	0.00
Cameo									
9,236.8	0.00	0.00	8,915.0	-1,834.1	1,041.0	2,108.9	0.00	0.00	0.00
9,300.0	0.00	0.00	8,978.2	-1,834.1	1,041.0	2,108.9	0.00	0.00	0.00
9,400.0	0.00	0.00	9,078.2	-1,834.1	1,041.0	2,108.9	0.00	0.00	0.00
9,500.0	0.00	0.00	9,178.2	-1,834.1	1,041.0	2,108.9	0.00	0.00	0.00
9,600.0	0.00	0.00	9,278.2	-1,834.1	1,041.0	2,108.9	0.00	0.00	0.00
Base Cameo Coal									
9,603.8	0.00	0.00	9,282.0	-1,834.1	1,041.0	2,108.9	0.00	0.00	0.00
Rollins									
9,649.8	0.00	0.00	9,328.0	-1,834.1	1,041.0	2,108.9	0.00	0.00	0.00
9,700.0	0.00	0.00	9,378.2	-1,834.1	1,041.0	2,108.9	0.00	0.00	0.00
9,800.0	0.00	0.00	9,478.2	-1,834.1	1,041.0	2,108.9	0.00	0.00	0.00
Cozzette									
9,854.8	0.00	0.00	9,533.0	-1,834.1	1,041.0	2,108.9	0.00	0.00	0.00
9,900.0	0.00	0.00	9,578.2	-1,834.1	1,041.0	2,108.9	0.00	0.00	0.00
10,000.0	0.00	0.00	9,678.2	-1,834.1	1,041.0	2,108.9	0.00	0.00	0.00
10,100.0	0.00	0.00	9,778.2	-1,834.1	1,041.0	2,108.9	0.00	0.00	0.00
Corcoran									
10,109.8	0.00	0.00	9,788.0	-1,834.1	1,041.0	2,108.9	0.00	0.00	0.00
10,200.0	0.00	0.00	9,878.2	-1,834.1	1,041.0	2,108.9	0.00	0.00	0.00
10,300.0	0.00	0.00	9,978.2	-1,834.1	1,041.0	2,108.9	0.00	0.00	0.00
10,400.0	0.00	0.00	10,078.2	-1,834.1	1,041.0	2,108.9	0.00	0.00	0.00
TD @ 10431.8' MD / 10110.0' TVD									
10,431.8	0.00	0.00	10,110.0	-1,834.1	1,041.0	2,108.9	0.00	0.00	0.00

Design Targets

Target Name	Dip Angle (°)	Dip Dir. (°)	TVD (usft)	+N/-S (usft)	+E/-W (usft)	Northing (usft)	Easting (usft)	Latitude	Longitude
- hit/miss target									
- Shape									
PBHL D#4 - CC 0697	0.00	0.00	10,110.0	-1,834.1	1,041.0	1,637,698.91	2,238,384.51	39.553180	-108.201438
- plan hits target center									
- Circle (radius 50.0)									

Casing Points

Measured Depth (usft)	Vertical Depth (usft)	Name	Casing Diameter (")	Hole Diameter (")
2,530.0	2,439.1	9 5/8"	9-5/8	14-3/4



Well Planning Report



Database:	EDM 5000.1 Single User Db	Local Co-ordinate Reference:	Well CC 0697-03-17E
Company:	Laramie Energy, LLC	TVD Reference:	well @ 8458.0usft (30' RKB)
Project:	Garfield County, CO	MD Reference:	well @ 8458.0usft (30' RKB)
Site:	CC 0697-03-07 Pad	North Reference:	True
Well:	CC 0697-03-17E	Survey Calculation Method:	Minimum Curvature
Wellbore:	Wellbore #1		
Design:	Design #5		

Formations

Measured Depth (usft)	Vertical Depth (usft)	Name	Lithology	Dip (°)	Dip Direction (°)
991.7	975.0	Mahogany			
3,059.4	2,943.0	Wasatch			
4,940.2	4,733.0	Wasatch 'G' Sand			
5,160.8	4,943.0	Fort Union			
6,772.6	6,477.0	Ohio Creek			
6,970.1	6,665.0	Williams Fork			
7,712.8	7,391.0	TOG			
9,236.8	8,915.0	Cameo			
9,603.8	9,282.0	Base Cameo Coal			
9,649.8	9,328.0	Rollins			
9,854.8	9,533.0	Cozzette			
10,109.8	9,788.0	Corcoran			

Plan Annotations

Measured Depth (usft)	Vertical Depth (usft)	Local Coordinates		Comment
		+N/-S (usft)	+E/-W (usft)	
250.0	250.0	0.0	0.0	KOP/ (Build 3.00°/100')
845.7	836.1	-80.1	45.5	EOB @ 17.87° Inc. / 150.42° Azm
7,117.1	6,804.9	-1,753.9	995.5	Drop @ 3.00°/100'
7,712.8	7,391.0	-1,834.1	1,041.0	EOD @ Vertical
10,431.8	10,110.0	-1,834.1	1,041.0	TD @ 10431.8' MD / 10110.0' TVD