

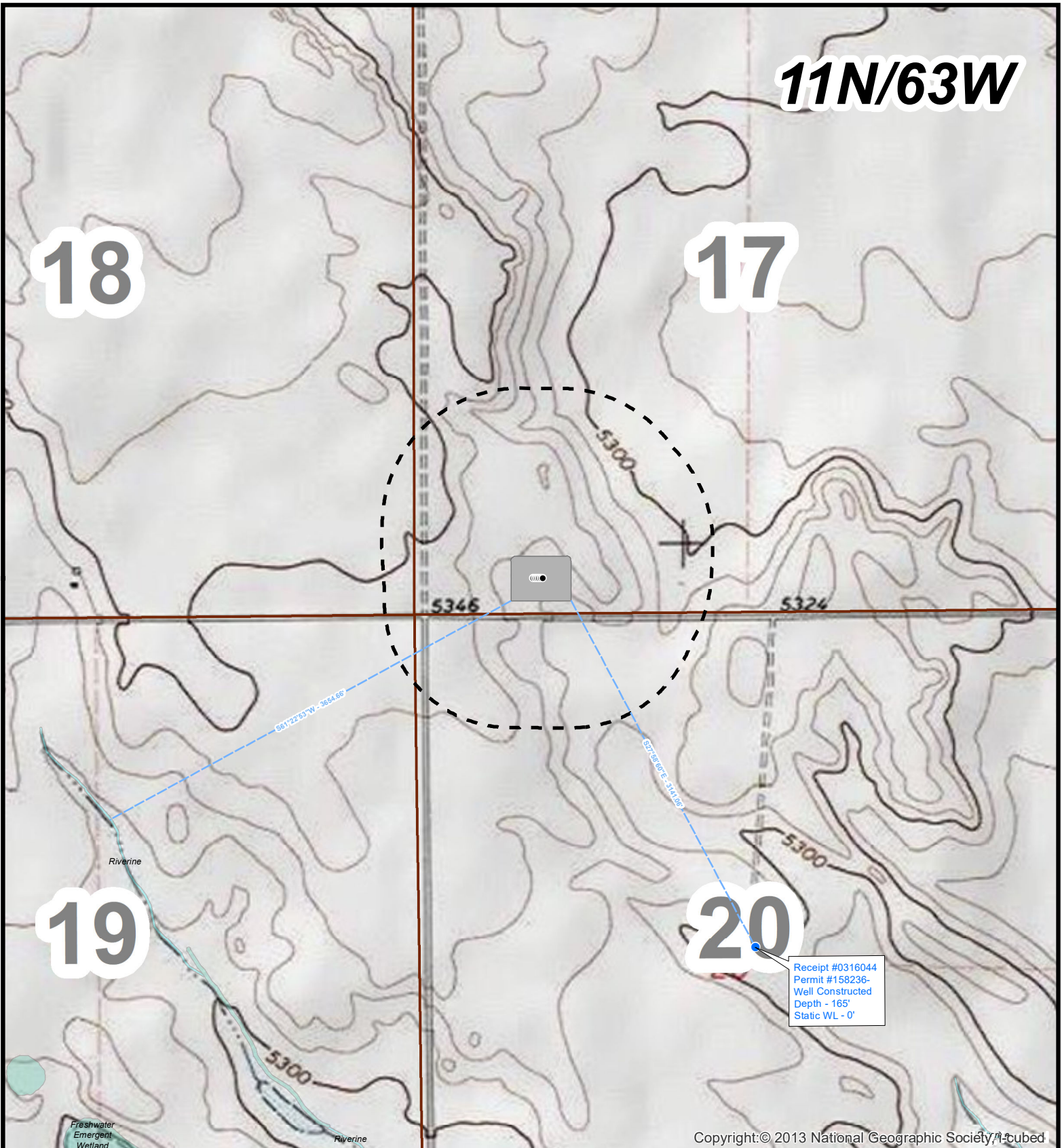
11N/63W

18

17

19

20

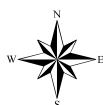


Copyright:© 2013 National Geographic Society/Mapbox

# HighPoint

RESOURCES

Hydrology Map  
Crittter Creek 17 SW  
SWSW, Section 16, T11N, R63W  
Weld County, Colorado



0 250 500 1,000 Feet

## Legend

- Surface Hole Location
- Water Wells (CDWR)
- Water Distance Line
- 1,000' Buffer
- Pad Location
- CO Wetlands (Type)**
  - Freshwater Emergent Wetland
  - Riverine