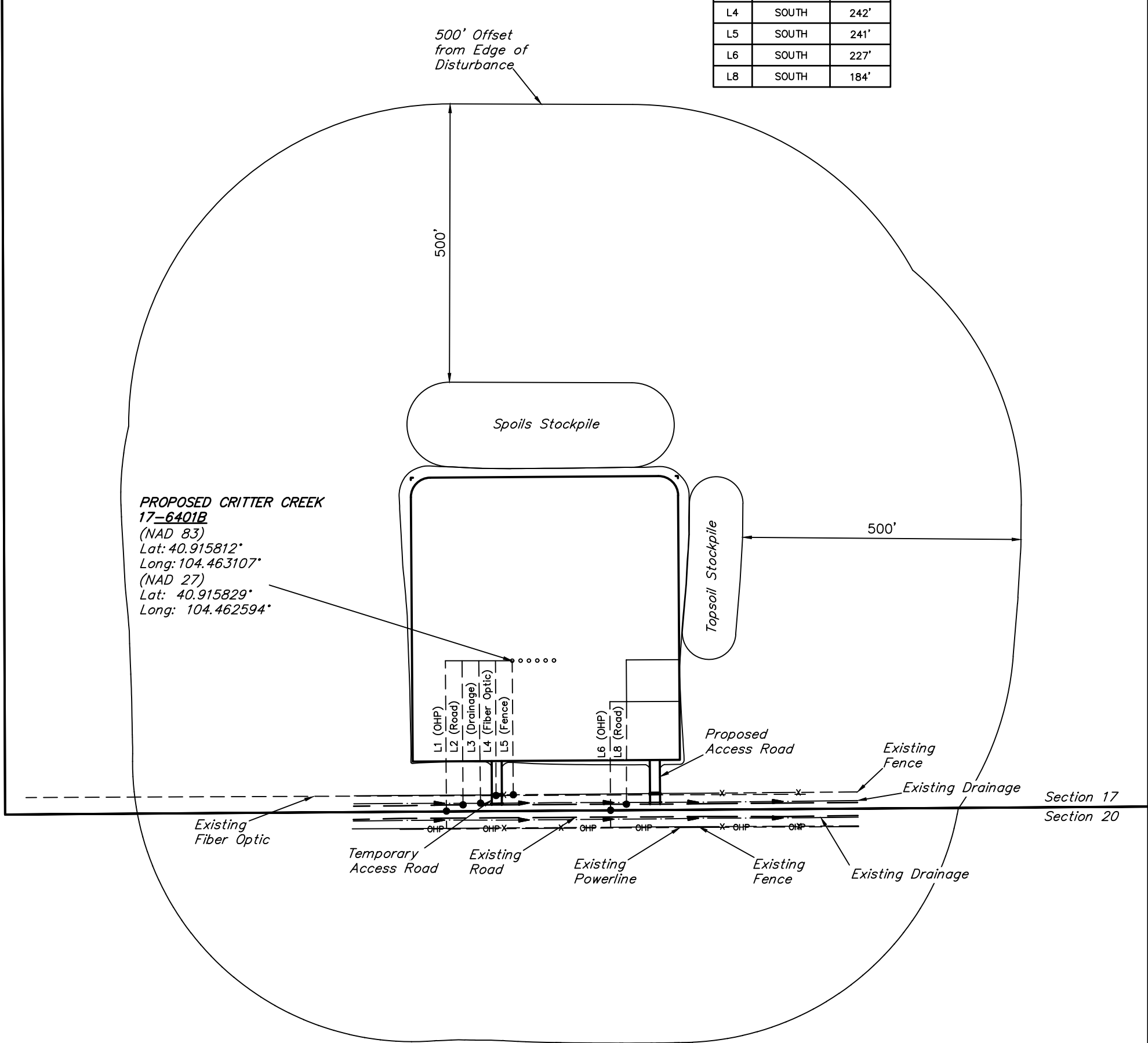


LINE TABLE		
LINE	DIRECTION	LENGTH
L1	SOUTH	302'
L2	SOUTH	259'
L3	S01°E	256'
L4	SOUTH	242'
L5	SOUTH	241'
L6	SOUTH	227'
L8	SOUTH	184'



PLANT COMMUNITY

☐ DISTURBED GRASSLAND

☒ NATIVE GRASSLAND

☐ SHRUB LAND

☐ PLAINS RIPARIAN

☐ MOUNTAIN RIPARIAN

☐ FOREST LAND

☐ WETLANDS AQUATIC

☐ ALPINE

☐ OTHER (Describe):

CURRENT LAND USE

CROP LAND:

NON-CROP LAND:

SUBDIVIDED:

☐ IRRIGATED

☒ RANGELAND

☐ INDUSTRIAL

☐ DRY LAND

☐ TIMBER

☐ COMMERCIAL

☐ IMPROVED PASTURE

☐ RECREATIONAL

☐ RESIDENTIAL

☐ HAY MEADOW

☐ OTHER (Describe)

☐ CRP

FUTURE LAND USE

CROP LAND:

NON-CROP LAND:

SUBDIVIDED:

☐ IRRIGATED

☒ RANGELAND

☐ INDUSTRIAL

☐ DRY LAND

☐ TIMBER

☐ COMMERCIAL

☐ IMPROVED PASTURE

☐ RECREATIONAL

☐ RESIDENTIAL

☐ HAY MEADOW

☐ OTHER (Describe)

☐ CRP

NOTES:

•

HIGHPOINT OPERATING CORPORATION

CRITTER CREEK 17 SW PAD  
SW 1/4 SW 1/4, SECTION 17, T11N, R63W, 6th P.M.  
WELD COUNTY, COLORADO



UELS, LLC  
Corporate Office \* 85 South 200 East  
Vernal, UT 84078 \* (435) 789-1017

SURVEYED BY	JARED CHRISTOPHER, O.R.	04-18-18	SCALE
DRAWN BY	D.J.W.	04-23-18	1" = 200'
LOCATION DRAWING		FIGURE #4	