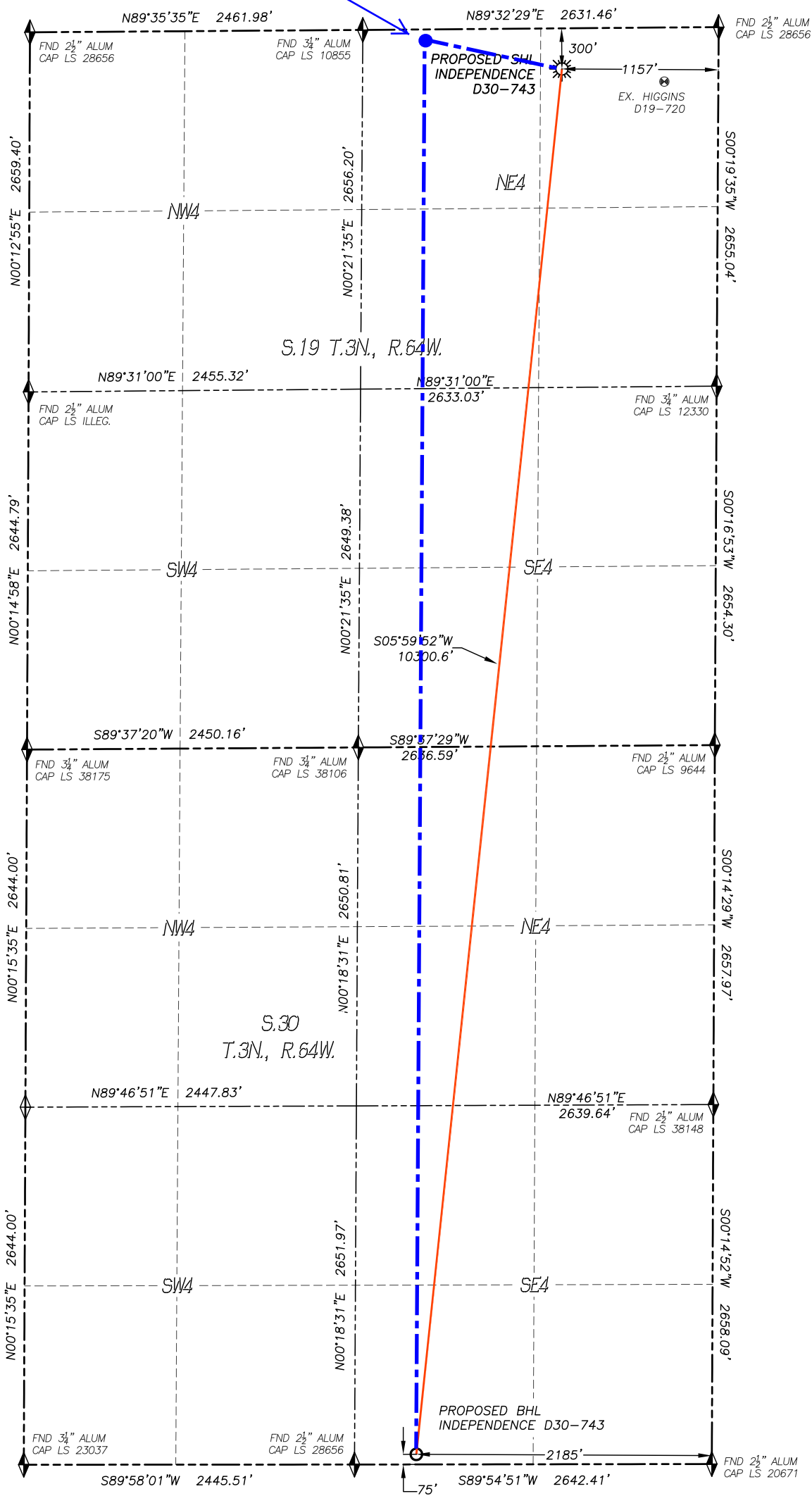


Approximate Top of Producing Zone:
60' FNL, 2115 FEL, Sec 19, T3N-R64W.
HAND DRAWN 2/22/2018
Depiction was not surveyed and was added by NBL

WELL LOCATION CERTIFICATE
INDEPENDENCE D30-743

SECTION: 19
TOWNSHIP: 3N
RANGE: 64W



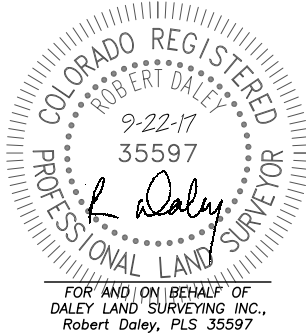
APPROVED
By hilarymckenna at 9:59 am, 2/26/18

IN ACCORDANCE WITH A REQUEST FROM TYLER BEAVERS OF NOBLE ENERGY INC., DALEY LAND SURVEYING, INC. HAS DETERMINED THE SURFACE LOCATION OF THE INDEPENDENCE D30-743 WELL TO BE 300' FNL, 1157' FEL, AS MEASURED AT NINETY (90) DEGREES FROM THE SECTION LINES OF SECTION 19, TOWNSHIP 3 NORTH, RANGE 64 WEST AND THE BOTTOM HOLE LOCATION TO BE 75' FSL, 2185' FEL, AS MEASURED AT NINETY (90) DEGREES FROM THE SECTION LINES OF SECTION 30, TOWNSHIP 3 NORTH, RANGE 64 WEST, OF THE 6TH PRINCIPAL MERIDIAN, WELD COUNTY, COLORADO.

I HEREBY STATE THAT THIS WELL LOCATION CERTIFICATE WAS PREPARED BY ME OR UNDER MY DIRECT SUPERVISION, THAT THE WORK WAS COMPLETED ON 8/17/2017 FOR AND ON BEHALF OF NOBLE ENERGY, INC., AND THAT THIS MAP DOES NOT REPRESENT A BOUNDARY SURVEY, IT IS NOT A LAND SURVEY PLAT OR AN IMPROVEMENT SURVEY PLAT AND IT IS NOT TO BE RELIED UPON FOR THE ESTABLISHMENT OF FENCE, BUILDING OR OTHER FUTURE IMPROVEMENT LINES.

NOTES:

- BEARINGS FOR THIS MAP ARE ASSUMED AND BASED UPON GPS OBSERVATIONS MADE BETWEEN MONUMENTS LOCATED AT THE NORTHWEST CORNER AND NORTH QUARTER CORNER OF SECTION 19, T.3N., R.64W.
- HORIZONTAL DATUM IS NAD83.
- VERTICAL DATUM IS NAVD88 AND ORIGINATES FROM THE LOCAL C.O.R.S. NETWORK, UTILIZING THE GEOID12A MODEL.
- SEE LOCATION DRAWING FOR VISIBLE IMPROVEMENTS WITHIN 500' OF PROPOSED DISTURBED AREA.
- SURFACE USE: RANGELAND.
- INST. OPERATOR: KYLE DALEY.
- NEAREST WELL: 763'± SE - HIGGINS D19-720



NEAREST CULTURAL ITEMS:

BUILDING: 542'± S
BUILDING UNIT: 2247'± NW
HIGH OCC. BLD. UNIT: 5280'+
DES. OUTSIDE ACTIVITY AREA: 5280'+
PUBLIC ROAD: 288'± N
ABOVE GROUND UTILITY: 1158'± E
RAILROAD: 5280'+
PROPERTY LINE: 300'± N

NAD 83 LATITUDE AND LONGITUDE

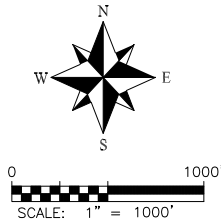
SURFACE LOCATION:

LATITUDE: N40.21721°
LONGITUDE: W104.58858°
ELEV: 4771'
PDOP: 1.1
QTR/QTR: NE4/NE4

BOTTOM HOLE:

LATITUDE: N40.18909°
LONGITUDE: W104.59243°

- LEGEND
- FOUND MONUMENT AS DESCRIBED
 - PROPOSED WELL
 - EXISTING WELL
 - BOTTOM HOLE
 - ABANDONED WELL
 - CALCULATED POSITION



noble energy

DALEY LAND
SURVEYING, INC.
970.302.4159