

# LOCHBUIE LAND 2L-25H-D166 WELL LOCATION EXHIBIT

3.25 ALUM CAP  
PLS 12405, 1998

2.5" ALUM CAP  
PLS 25636, 2002

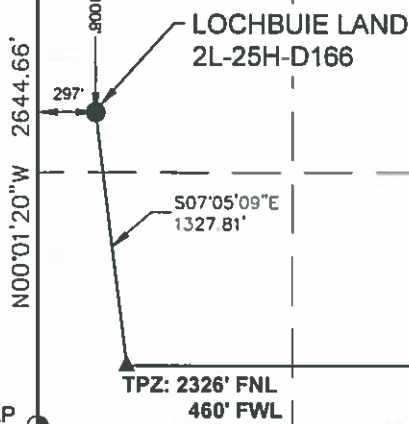
2.5" ALUM CAP  
PLS 12405, 1998

3.25" ALUM CAP  
ILLEGIBLE, 2002

2.5" ALUM CAP  
28686, 1994

3.25" ALUM CAP  
12405, 1998

3.25" ALUM CAP  
PLS 26298, 2008



## 25

SURFACE LOCATION:  
GROUND ELEVATION=5076'  
NAD83  
LATITUDE:40.026767° N  
LONGITUDE:104.733901° W

TOP OF PRODUCTION ZONE LOCATION:  
NAD83  
LATITUDE:40.023151° N  
LONGITUDE:104.733319° W

BOTTOM HOLE LOCATION:  
NAD83  
LATITUDE:40.023156° N  
LONGITUDE:104.717749° W

### NOTES:

BH LOCATION PROVIDED BY CLIENT.  
LAND SURFACE USE- RANGELAND  
SEE LOCATION DRAWING FOR ADDITIONAL  
IMPROVEMENTS WITHIN 500'

PDOP=1.5  
GPS OPERATOR: IAN CARABAJAL

### LEGEND

- ⊕ = EXISTING MONUMENT
- = CALCULATED POSITION
- = PROPOSED WELL
- ◆ = EXISTING WELL
- ⬆ = BOTTOM HOLE
- ▲ = TOP OF PRODUCTION ZONE
- TPZ = TOP OF PRODUCTION ZONE
- BHL = BOTTOM HOLE LOCATION
- WC = WITNESS CORNER

### NOTES

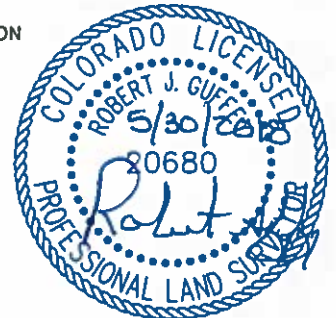
- THIS FIELD SURVEY CONFORMS TO THE MINIMUM STANDARDS SET BY THE C.O.G.C.C. RULE NO. 215
- ALL DISTANCES AND BEARINGS SHOWN HEREON ARE GROUND VALUES AS GPS MEASURED IN THE FIELD, WITH TIES TO WELLS MEASURED PERPENDICULAR TO LINES SHOWN HEREON. THIS LOW DISTORTION PROJECTION (LDP) IS BASED ON THE NORTH AMERICAN DATUM OF 1983, U.S. SURVEY FOOT WITH A LATITUDE ORIGIN OF 40.044013°N, A CENTRAL MERIDIAN LONGITUDE OF 104.772736°W, AND A SCALE FACTOR ON THE CENTRAL MERIDIAN OF 1.000238 (EXACT). THE LDP BASIS OF BEARINGS IS GEODETIC NORTH.
- FIELD VERIFICATION OF MONUMENTS COMPLETED WITHIN 1 YEAR OF SIGNATURE DATE, UNLESS OTHERWISE NOTED

NOTICE: ACCORDING TO COLORADO LAW YOU MUST COMMENCE ANY LEGAL ACTION BASED UPON ANY DEFECT IN THIS SURVEY WITHIN THREE YEARS AFTER YOU FIRST DISCOVER SUCH DEFECT. IN NO EVENT MAY ANY ACTION BASED UPON ANY DEFECT IN THIS SURVEY BE COMMENCED MORE THAN TEN YEARS FROM THIS SAID DATE OF THIS CERTIFICATION SHOWN HEREON.

### WELL LOCHBUIE LAND 2L-25H-D166 TO BE LOCATED 1008' FNL & 297' FWL

I, ROBERT J. GUFFEY, A LICENSED PROFESSIONAL LAND SURVEYOR IN THE STATE OF COLORADO, DO HEREBY STATE TO CRESTONE PEAK RESOURCES THAT THE WELL LOCATION EXHIBIT SHOWN HEREON WAS PREPARED BY ME OR UNDER MY DIRECT SUPERVISION AND THE DRAWING SHOWN HEREON ACCURATELY DEPICTS THE PROPOSED LOCATION OF THE WELL. THIS EXHIBIT MEETS THE REQUIREMENTS OF A GIS LAND POSITION AS DEFINED BY SECTION 38-51-102 (7.5) C.R.S. AND AS SUCH PER SECTION 38-51-109.3 C.R.S. CANNOT BE RELIED UPON TO DETERMINE OWNERSHIP.

ROBERT J. GUFFEY, PLS 20680  
COLORADO LICENSED PROFESSIONAL LAND SURVEYOR  
FOR AND ON BEHALF OF P.F.S., LLC  
d.b.a. ASCENT GEOMATICS SOLUTIONS



SHEET 1 OF 1



FIELD DATE:  
04-30-18  
DRAWING DATE:  
05-29-18  
BY:  
SMF  
CHECKED:  
CLP

WELL NAME:  
LOCHBUIE LAND 2L-25H-D166  
SURFACE LOCATION:  
NW 1/4 NW 1/4 SEC. 25, T1N, R66W, 6TH P.M.  
WELD COUNTY, COLORADO

PREPARED FOR

