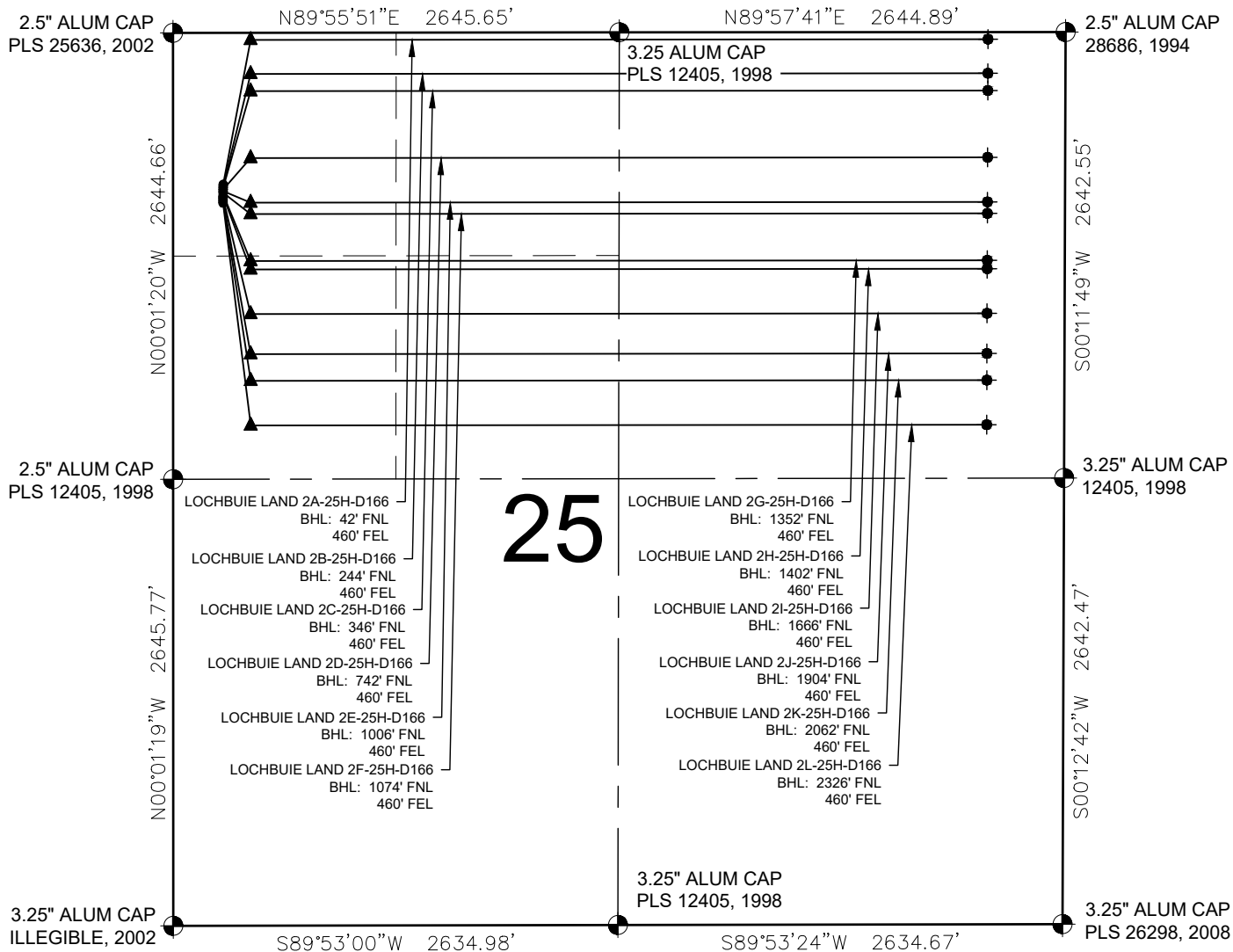


LOCHBUIE LAND 25H-D166 PAD MULTI-WELL PLAN



NOTES:

- LOCHBUIE LAND 2A-25H-D166 TO BE AT 898' FNL & 298' FWL. BOTTOM HOLE AT 42' FNL & 460' FEL.
- LOCHBUIE LAND 2B-25H-D166 TO BE AT 908' FNL & 298' FWL. BOTTOM HOLE AT 244' FNL & 460' FEL.
- LOCHBUIE LAND 2C-25H-D166 TO BE AT 918' FNL & 297' FWL. BOTTOM HOLE AT 346' FNL & 460' FEL.
- LOCHBUIE LAND 2D-25H-D166 TO BE AT 928' FNL & 297' FWL. BOTTOM HOLE AT 742' FNL & 460' FEL.
- LOCHBUIE LAND 2E-25H-D166 TO BE AT 938' FNL & 297' FWL. BOTTOM HOLE AT 1006' FNL & 460' FEL.
- LOCHBUIE LAND 2F-25H-D166 TO BE AT 948' FNL & 297' FWL. BOTTOM HOLE AT 1074' FNL & 460' FEL.
- LOCHBUIE LAND 2G-25H-D166 TO BE AT 958' FNL & 297' FWL. BOTTOM HOLE AT 1352' FNL & 460' FEL.
- LOCHBUIE LAND 2H-25H-D166 TO BE AT 968' FNL & 297' FWL. BOTTOM HOLE AT 1402' FNL & 460' FEL.
- LOCHBUIE LAND 2I-25H-D166 TO BE AT 978' FNL & 297' FWL. BOTTOM HOLE AT 1666' FNL & 460' FEL.
- LOCHBUIE LAND 2J-25H-D166 TO BE AT 988' FNL & 297' FWL. BOTTOM HOLE AT 1904' FNL & 460' FEL.
- LOCHBUIE LAND 2K-25H-D166 TO BE AT 998' FNL & 297' FWL. BOTTOM HOLE AT 2062' FNL & 460' FEL.
- LOCHBUIE LAND 2L-25H-D166 TO BE AT 1008' FNL & 297' FWL. BOTTOM HOLE AT 2326' FNL & 460' FEL.

LEGEND

- = EXISTING MONUMENT
- = CALCULATED POSITION
- = PROPOSED WELL
- ◆ = EXISTING WELL
- ▲ = TOP OF PRODUCTION ZONE
- BHL = BOTTOM HOLE LOCATION

NOTES:

- THIS FIELD SURVEY CONFORMS TO THE MINIMUM STANDARDS SET BY THE C.O.G.C.C., RULE NO. 215
- ALL DISTANCES AND BEARINGS SHOWN HEREON ARE GROUND VALUES AS GPS MEASURED IN THE FIELD, WITH TIES TO WELLS MEASURED PERPENDICULAR TO LINES SHOWN HEREON. THIS LOW DISTORTION PROJECTION (LDP) IS BASED ON THE NORTH AMERICAN DATUM OF 1983, U.S. SURVEY FOOT WITH A LATITUDE ORIGIN OF 40.044013°N, A CENTRAL MERIDIAN LONGITUDE OF 104.772736°W, AND A SCALE FACTOR ON THE CENTRAL MERIDIAN OF 1.000238 (EXACT). THE LDP BASIS OF BEARINGS IS GEODETIC NORTH.
- FIELD VERIFICATION OF MONUMENTS COMPLETED WITHIN 1 YEAR OF SIGNATURE DATE, UNLESS OTHERWISE NOTED.

FIELD DATE:

04-30-18

DRAWING DATE:

05-29-18

BY:

SMF

CHECKED:

CLP

SITE NAME:

LOCHBUIE LAND 25H-D166 PAD

SURFACE LOCATION:

NW 1/4 NW 1/4 SEC. 25 T1N, R66W, 6TH P.M.

WELD COUNTY, COLORADO

PREPARED FOR:



CRESTONE PEAK
RESOURCES