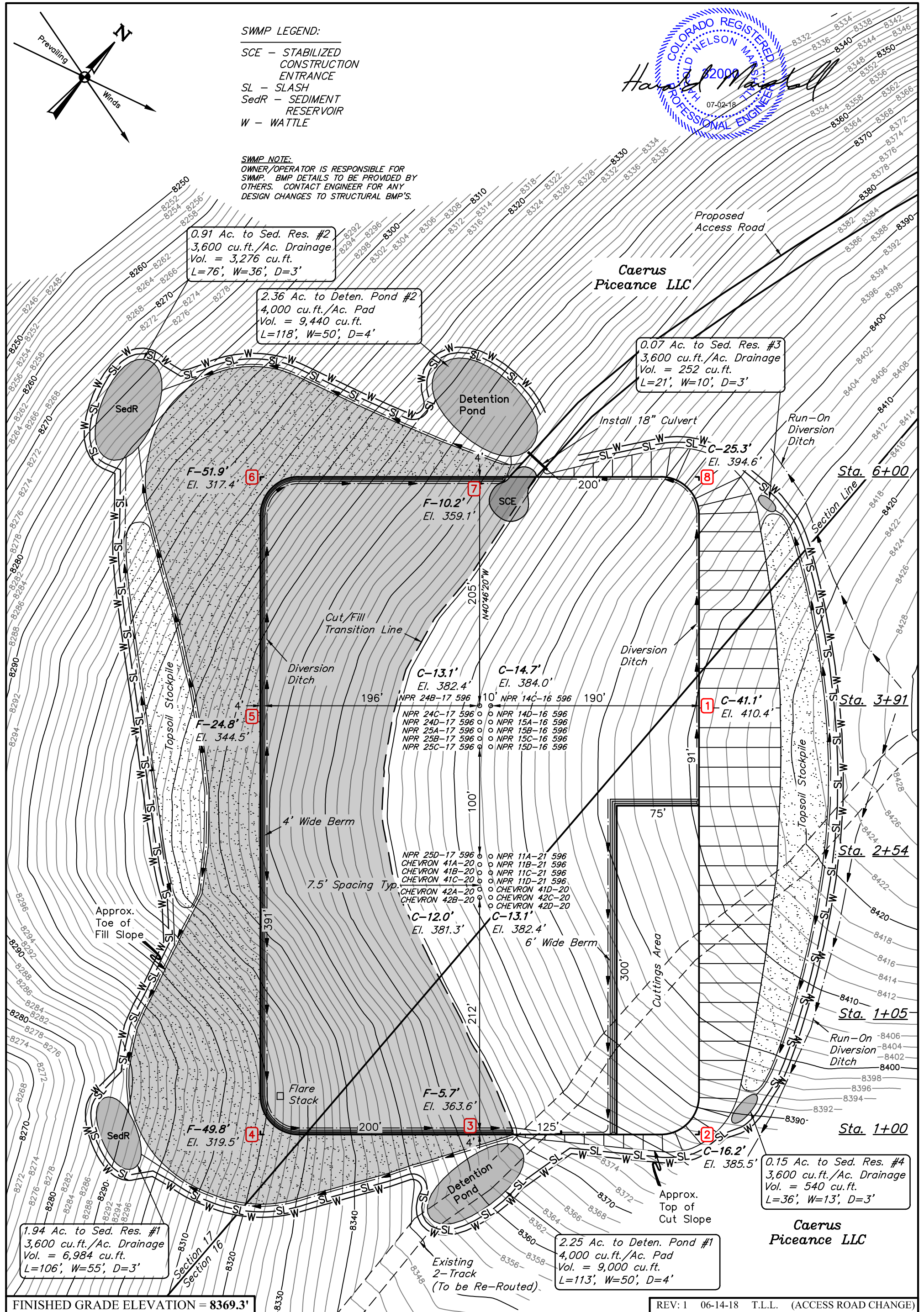
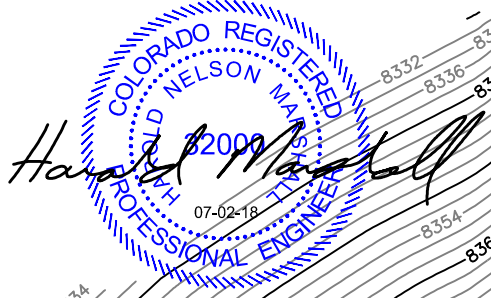


SWMP LEGEND:

SCE — STABILIZED
CONSTRUCTION
ENTRANCE
SL — SLASH
SedR — SEDIMENT
RESERVOIR
W — WATTLE

SWMP NOTE:
OWNER/OPERATOR IS RESPONSIBLE FOR
SWMP. BMP DETAILS TO BE PROVIDED BY
OTHERS. CONTACT ENGINEER FOR ANY
DESIGN CHANGES TO STRUCTURAL BMP'S.



FINISHED GRADE ELEVATION = 8369.3'

REV: 1 06-14-18 T.L.L. (ACCESS ROAD CHANGE)

- NOTES:
- Flare stack is to be located a min. of 100' from the wellhead.
 - Round corners at 35' radius or as needed.
 - Construct diversion ditches as needed.
 - Contours shown at 2' intervals.
 - Cut/Fill slopes 1 1/2:1 (Typ. except where noted).



UELS, LLC
Corporate Office * 85 South 200 East
Vernal, UT 84078 * (435) 789-1017

Caerus Oil & Gas LLC

NPR P17 596 PAD
SE 1/4 SE 1/4, SECTION 17, T5S, R96W, 6th P.M.
GARFIELD COUNTY, COLORADO

SURVEYED BY	BART HUNTING, D.P.	04-26-18	SCALE
DRAWN BY	T.L.L.	05-08-18	1" = 80'
CONSTRUCTION LAYOUT		FIGURE #1	

