



Crestone Peak Resources

Sec 17 T2N-R65W

Melbon Ranch Pad

MELBON RANCH 4C-17H-M265

Wellbore #1

Plan: Design #1 19Mar18 kjs

Survey Report - Geographic

17 May, 2018

Well Name:

MELBON RANCH 4C-17H-M265

Project Name:

Sec 17 T2N-R65W

Pad Name:

Melbon Ranch Pad

ANNOTATIONS

| MD | Inc | Azi | TVD | +N/-S | +E/-W | VSect | Departure | Annotation |
|----------|-------|--------|---------|---------|---------|---------|-----------|---------------------------|
| 200.00 | 0.00 | 0.00 | 200.00 | 0.00 | 0.00 | 0.00 | 0.00 | Start Build 2.00 |
| 700.00 | 10.00 | 0.00 | 697.47 | 43.52 | 0.00 | 11.43 | 43.52 | Begin 2/100 Build & Turn |
| 929.11 | 11.28 | 335.95 | 922.74 | 83.90 | -9.13 | 13.23 | 85.33 | Hold 11.28 Inc, 335.95 Az |
| 6524.75 | 11.28 | 335.95 | 6410.32 | 1083.30 | -455.06 | -154.50 | 1179.70 | KOP 8/100 |
| 7705.87 | 90.00 | 89.55 | 7170.00 | 1227.76 | 257.82 | 571.30 | 1937.05 | LP 90 Inc, 89.55 Az |
| 12083.54 | 90.00 | 89.55 | 7170.00 | 1262.28 | 4635.36 | 4804.15 | 6314.72 | TD at 12084.54 |

Geodetic Datum:

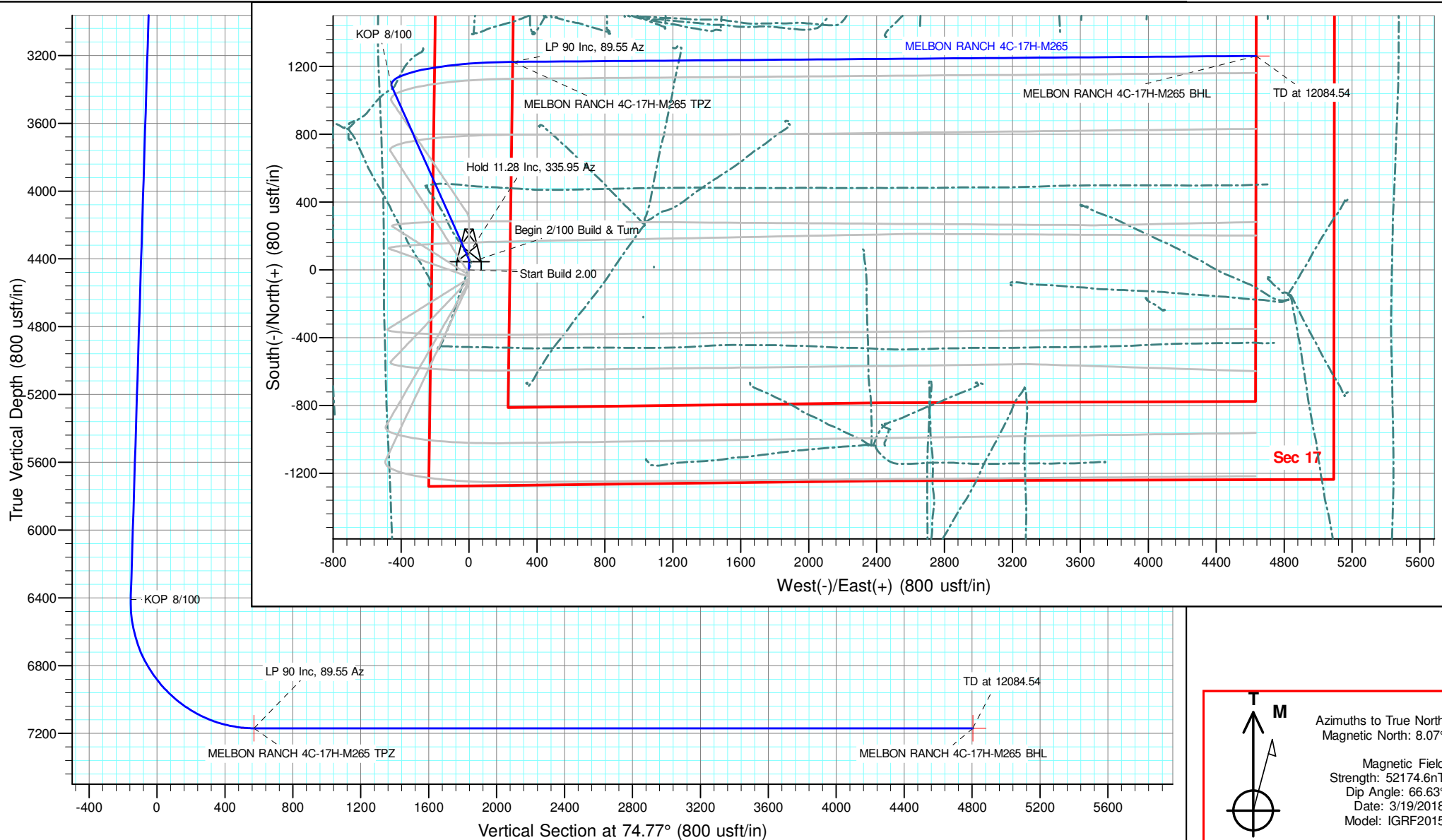
North American Datum 1983
US State Plane 1983, Colorado Northern Zone

Elevation:

Ground Elevation: 4956.00
KB Elevation: WELL @ 4979.00usft (Original Well Elev)

DESIGN TARGET DETAILS

| Name | TVD | +N/-S | +E/-W | Northing | Easting | Latitude | Longitude | Shape |
|------------------------------|-------|---------|---------|------------|------------|-----------|-------------|-------|
| MELBON RANCH 4C-17H-M265 BHL | 70.00 | 1262.29 | 4636.36 | 1294292.00 | 3229242.15 | 40.138316 | -104.680052 | Point |
| MELBON RANCH 4C-17H-M265 TPZ | 70.00 | 1227.76 | 257.82 | 1294217.80 | 3224864.11 | 40.138222 | -104.695713 | Point |



Survey Report - Geographic

| | | | |
|------------------|--------------------------|-------------------------------------|---|
| Company: | Crestone Peak Resources | Local Co-ordinate Reference: | Well MELBON RANCH 4C-17H-M265 |
| Project: | Sec 17 T2N-R65W | TVD Reference: | WELL @ 4979.00usft (Original Well Elev) |
| Site: | Melbon Ranch Pad | MD Reference: | WELL @ 4979.00usft (Original Well Elev) |
| Well: | MELBON RANCH 4C-17H-M265 | North Reference: | True |
| Wellbore: | Wellbore #1 | Survey Calculation Method: | Minimum Curvature |
| Design: | Design #1 19Mar18 kjs | Database: | EDM 5000.15 Single User Db |

| | | | |
|--------------------|----------------------------------|----------------------|----------------|
| Project | Sec 17 T2N-R65W, Weld County, CO | | |
| Map System: | US State Plane 1983 | System Datum: | Mean Sea Level |
| Geo Datum: | North American Datum 1983 | | |
| Map Zone: | Colorado Northern Zone | | |

| | | | | | | | | | |
|-----------------------|-----|------------------|--------------|--------------|------------|-------------|-------------------|------|---|
| Site | | Melbon Ranch Pad | | | | | | | |
| Site Position: | | Northing: | 1,292,987.77 | usft | Latitude: | 40.134852 | | | |
| From: | Map | Easting: | 3,224,617.42 | usft | Longitude: | -104.696635 | | | |
| Position Uncertainty: | | 0.00 | usft | Slot Radius: | 13-3/16 | " | Grid Convergence: | 0.52 | ° |

| Well | | MELBON RANCH 4C-17H-M265 | | | | |
|----------------------|-------|--------------------------|---------------------|-------------------|---------------|---------------|
| Well Position | +N/-S | 0.00 usft | Northing: | 1,292,987.76 usft | Latitude: | 40.134852 |
| | +E/-W | 0.00 usft | Easting: | 3,224,617.42 usft | Longitude: | -104.696635 |
| Position Uncertainty | | 0.00 usft | Wellhead Elevation: | usft | Ground Level: | 4,956.00 usft |

| | | | | | |
|------------------|-------------------|--------------------|------------------------|----------------------|----------------------------|
| Wellbore | Wellbore #1 | | | | |
| Magnetics | Model Name | Sample Date | Declination (°) | Dip Angle (°) | Field Strength (nT) |
| | IGRF2015 | 3/19/2018 | 8.07 | 66.63 | 52,174.59991972 |

| | | | | | |
|--------------------------|--------------------------------|---------------------|----------------------|----------------------|--|
| Design | Design #1 19Mar18 kjs | | | | |
| Audit Notes: | | | | | |
| Version: | Phase: | PLAN | Tie On Depth: | 0.00 | |
| Vertical Section: | Depth From (TVD) (usft) | +N/-S (usft) | +E/-W (usft) | Direction (°) | |
| | 0.00 | 0.00 | 0.00 | 74.77 | |

| | | | | | |
|----------------------------|------------------|-------------------------------------|------------------|---------------------|--|
| Survey Tool Program | Date | 5/17/2018 | | | |
| From (usft) | To (usft) | Survey (Wellbore) | Tool Name | Description | |
| 0.00 | 12,084.35 | Design #1 19Mar18 kjs (Wellbore #1) | MWD | OWSG MWD - Standard | |

| | | | | | | | | | |
|-------------------------------------|------------------------|--------------------|------------------------------|---------------------|---------------------|----------------------------|---------------------------|-----------------|------------------|
| Planned Survey | | | | | | | | | |
| Measured Depth (usft) | Inclination (°) | Azimuth (°) | Vertical Depth (usft) | +N/-S (usft) | +E/-W (usft) | Map Northing (usft) | Map Easting (usft) | Latitude | Longitude |
| 0.00 | 0.00 | 0.00 | 0.00 | 0.00 | 0.00 | 1,292,987.76 | 3,224,617.42 | 40.134852 | -104.696635 |
| 100.00 | 0.00 | 0.00 | 100.00 | 0.00 | 0.00 | 1,292,987.76 | 3,224,617.42 | 40.134852 | -104.696635 |
| 200.00 | 0.00 | 0.00 | 200.00 | 0.00 | 0.00 | 1,292,987.76 | 3,224,617.42 | 40.134852 | -104.696635 |
| Start Build 2.00 | | | | | | | | | |
| 300.00 | 2.00 | 0.00 | 299.98 | 1.75 | 0.00 | 1,292,989.50 | 3,224,617.41 | 40.134857 | -104.696635 |
| 400.00 | 4.00 | 0.00 | 399.84 | 6.98 | 0.00 | 1,292,994.73 | 3,224,617.36 | 40.134871 | -104.696635 |
| 500.00 | 6.00 | 0.00 | 499.45 | 15.69 | 0.00 | 1,293,003.45 | 3,224,617.28 | 40.134895 | -104.696635 |
| 600.00 | 8.00 | 0.00 | 598.70 | 27.88 | 0.00 | 1,293,015.64 | 3,224,617.17 | 40.134929 | -104.696635 |
| 700.00 | 10.00 | 0.00 | 697.47 | 43.52 | 0.00 | 1,293,031.28 | 3,224,617.03 | 40.134972 | -104.696635 |
| Begin 2/100 Build & Turn | | | | | | | | | |
| 800.00 | 10.33 | 348.81 | 795.90 | 61.00 | -1.74 | 1,293,048.74 | 3,224,615.13 | 40.135020 | -104.696642 |
| 900.00 | 11.02 | 338.65 | 894.18 | 78.71 | -6.96 | 1,293,066.40 | 3,224,609.75 | 40.135068 | -104.696660 |

Survey Report - Geographic

| | | | |
|------------------|--------------------------|-------------------------------------|---|
| Company: | Crestone Peak Resources | Local Co-ordinate Reference: | Well MELBON RANCH 4C-17H-M265 |
| Project: | Sec 17 T2N-R65W | TVD Reference: | WELL @ 4979.00usft (Original Well Elev) |
| Site: | Melbon Ranch Pad | MD Reference: | WELL @ 4979.00usft (Original Well Elev) |
| Well: | MELBON RANCH 4C-17H-M265 | North Reference: | True |
| Wellbore: | Wellbore #1 | Survey Calculation Method: | Minimum Curvature |
| Design: | Design #1 19Mar18 kjs | Database: | EDM 5000.15 Single User Db |

| Planned Survey | | | | | | | | | |
|----------------------------------|-----------------|-------------|-----------------------|--------------|--------------|---------------------|--------------------|-----------|-------------|
| Measured Depth (usft) | Inclination (°) | Azimuth (°) | Vertical Depth (usft) | +N/-S (usft) | +E/-W (usft) | Map Northing (usft) | Map Easting (usft) | Latitude | Longitude |
| 929.11 | 11.28 | 335.95 | 922.74 | 83.90 | -9.13 | 1,293,071.57 | 3,224,607.53 | 40.135082 | -104.696668 |
| Hold 11.28 Inc, 335.95 Az | | | | | | | | | |
| 1,000.00 | 11.28 | 335.95 | 992.26 | 96.56 | -14.78 | 1,293,084.18 | 3,224,601.76 | 40.135117 | -104.696688 |
| 1,100.00 | 11.28 | 335.95 | 1,090.33 | 114.42 | -22.75 | 1,293,101.96 | 3,224,593.63 | 40.135166 | -104.696717 |
| 1,200.00 | 11.28 | 335.95 | 1,188.40 | 132.28 | -30.72 | 1,293,119.75 | 3,224,585.50 | 40.135215 | -104.696745 |
| 1,300.00 | 11.28 | 335.95 | 1,286.47 | 150.14 | -38.69 | 1,293,137.54 | 3,224,577.37 | 40.135264 | -104.696774 |
| 1,400.00 | 11.28 | 335.95 | 1,384.54 | 168.00 | -46.66 | 1,293,155.33 | 3,224,569.24 | 40.135313 | -104.696802 |
| 1,500.00 | 11.28 | 335.95 | 1,482.61 | 185.86 | -54.63 | 1,293,173.11 | 3,224,561.11 | 40.135362 | -104.696831 |
| 1,600.00 | 11.28 | 335.95 | 1,580.68 | 203.72 | -62.60 | 1,293,190.90 | 3,224,552.98 | 40.135411 | -104.696859 |
| 1,700.00 | 11.28 | 335.95 | 1,678.75 | 221.58 | -70.57 | 1,293,208.69 | 3,224,544.85 | 40.135460 | -104.696888 |
| 1,800.00 | 11.28 | 335.95 | 1,776.81 | 239.44 | -78.54 | 1,293,226.48 | 3,224,536.72 | 40.135509 | -104.696916 |
| 1,900.00 | 11.28 | 335.95 | 1,874.88 | 257.30 | -86.51 | 1,293,244.26 | 3,224,528.59 | 40.135558 | -104.696945 |
| 2,000.00 | 11.28 | 335.95 | 1,972.95 | 275.16 | -94.47 | 1,293,262.05 | 3,224,520.46 | 40.135607 | -104.696973 |
| 2,100.00 | 11.28 | 335.95 | 2,071.02 | 293.02 | -102.44 | 1,293,279.84 | 3,224,512.33 | 40.135657 | -104.697002 |
| 2,200.00 | 11.28 | 335.95 | 2,169.09 | 310.88 | -110.41 | 1,293,297.62 | 3,224,504.20 | 40.135706 | -104.697030 |
| 2,300.00 | 11.28 | 335.95 | 2,267.16 | 328.74 | -118.38 | 1,293,315.41 | 3,224,496.07 | 40.135755 | -104.697059 |
| 2,400.00 | 11.28 | 335.95 | 2,365.23 | 346.60 | -126.35 | 1,293,333.20 | 3,224,487.94 | 40.135804 | -104.697087 |
| 2,500.00 | 11.28 | 335.95 | 2,463.30 | 364.46 | -134.32 | 1,293,350.99 | 3,224,479.81 | 40.135853 | -104.697116 |
| 2,600.00 | 11.28 | 335.95 | 2,561.37 | 382.32 | -142.29 | 1,293,368.77 | 3,224,471.67 | 40.135902 | -104.697144 |
| 2,700.00 | 11.28 | 335.95 | 2,659.43 | 400.18 | -150.26 | 1,293,386.56 | 3,224,463.54 | 40.135951 | -104.697173 |
| 2,800.00 | 11.28 | 335.95 | 2,757.50 | 418.04 | -158.23 | 1,293,404.35 | 3,224,455.41 | 40.136000 | -104.697201 |
| 2,900.00 | 11.28 | 335.95 | 2,855.57 | 435.90 | -166.20 | 1,293,422.14 | 3,224,447.28 | 40.136049 | -104.697230 |
| 3,000.00 | 11.28 | 335.95 | 2,953.64 | 453.76 | -174.17 | 1,293,439.92 | 3,224,439.15 | 40.136098 | -104.697258 |
| 3,100.00 | 11.28 | 335.95 | 3,051.71 | 471.62 | -182.14 | 1,293,457.71 | 3,224,431.02 | 40.136147 | -104.697287 |
| 3,200.00 | 11.28 | 335.95 | 3,149.78 | 489.48 | -190.10 | 1,293,475.50 | 3,224,422.89 | 40.136196 | -104.697315 |
| 3,300.00 | 11.28 | 335.95 | 3,247.85 | 507.35 | -198.07 | 1,293,493.29 | 3,224,414.76 | 40.136245 | -104.697344 |
| 3,400.00 | 11.28 | 335.95 | 3,345.92 | 525.21 | -206.04 | 1,293,511.07 | 3,224,406.63 | 40.136294 | -104.697372 |
| 3,500.00 | 11.28 | 335.95 | 3,443.99 | 543.07 | -214.01 | 1,293,528.86 | 3,224,398.50 | 40.136343 | -104.697401 |
| 3,600.00 | 11.28 | 335.95 | 3,542.05 | 560.93 | -221.98 | 1,293,546.65 | 3,224,390.37 | 40.136392 | -104.697429 |
| 3,700.00 | 11.28 | 335.95 | 3,640.12 | 578.79 | -229.95 | 1,293,564.44 | 3,224,382.24 | 40.136441 | -104.697458 |
| 3,800.00 | 11.28 | 335.95 | 3,738.19 | 596.65 | -237.92 | 1,293,582.22 | 3,224,374.11 | 40.136490 | -104.697486 |
| 3,900.00 | 11.28 | 335.95 | 3,836.26 | 614.51 | -245.89 | 1,293,600.01 | 3,224,365.98 | 40.136539 | -104.697515 |
| 4,000.00 | 11.28 | 335.95 | 3,934.33 | 632.37 | -253.86 | 1,293,617.80 | 3,224,357.85 | 40.136588 | -104.697543 |
| 4,100.00 | 11.28 | 335.95 | 4,032.40 | 650.23 | -261.83 | 1,293,635.59 | 3,224,349.72 | 40.136637 | -104.697572 |
| 4,200.00 | 11.28 | 335.95 | 4,130.47 | 668.09 | -269.80 | 1,293,653.37 | 3,224,341.58 | 40.136686 | -104.697600 |
| 4,300.00 | 11.28 | 335.95 | 4,228.54 | 685.95 | -277.77 | 1,293,671.16 | 3,224,333.45 | 40.136735 | -104.697629 |
| 4,400.00 | 11.28 | 335.95 | 4,326.61 | 703.81 | -285.73 | 1,293,688.95 | 3,224,325.32 | 40.136784 | -104.697657 |
| 4,500.00 | 11.28 | 335.95 | 4,424.67 | 721.67 | -293.70 | 1,293,706.73 | 3,224,317.19 | 40.136833 | -104.697686 |
| 4,600.00 | 11.28 | 335.95 | 4,522.74 | 739.53 | -301.67 | 1,293,724.52 | 3,224,309.06 | 40.136882 | -104.697714 |
| 4,700.00 | 11.28 | 335.95 | 4,620.81 | 757.39 | -309.64 | 1,293,742.31 | 3,224,300.93 | 40.136931 | -104.697743 |
| 4,800.00 | 11.28 | 335.95 | 4,718.88 | 775.25 | -317.61 | 1,293,760.10 | 3,224,292.80 | 40.136980 | -104.697771 |
| 4,900.00 | 11.28 | 335.95 | 4,816.95 | 793.11 | -325.58 | 1,293,777.88 | 3,224,284.67 | 40.137029 | -104.697800 |
| 5,000.00 | 11.28 | 335.95 | 4,915.02 | 810.97 | -333.55 | 1,293,795.67 | 3,224,276.54 | 40.137078 | -104.697828 |
| 5,100.00 | 11.28 | 335.95 | 5,013.09 | 828.83 | -341.52 | 1,293,813.46 | 3,224,268.41 | 40.137127 | -104.697857 |
| 5,200.00 | 11.28 | 335.95 | 5,111.16 | 846.69 | -349.49 | 1,293,831.25 | 3,224,260.28 | 40.137176 | -104.697885 |
| 5,300.00 | 11.28 | 335.95 | 5,209.22 | 864.55 | -357.46 | 1,293,849.03 | 3,224,252.15 | 40.137225 | -104.697914 |
| 5,400.00 | 11.28 | 335.95 | 5,307.29 | 882.41 | -365.43 | 1,293,866.82 | 3,224,244.02 | 40.137274 | -104.697942 |
| 5,500.00 | 11.28 | 335.95 | 5,405.36 | 900.27 | -373.40 | 1,293,884.61 | 3,224,235.89 | 40.137323 | -104.697971 |
| 5,600.00 | 11.28 | 335.95 | 5,503.43 | 918.13 | -381.36 | 1,293,902.40 | 3,224,227.76 | 40.137373 | -104.697999 |
| 5,700.00 | 11.28 | 335.95 | 5,601.50 | 935.99 | -389.33 | 1,293,920.18 | 3,224,219.62 | 40.137422 | -104.698028 |
| 5,800.00 | 11.28 | 335.95 | 5,699.57 | 953.85 | -397.30 | 1,293,937.97 | 3,224,211.49 | 40.137471 | -104.698056 |
| 5,900.00 | 11.28 | 335.95 | 5,797.64 | 971.71 | -405.27 | 1,293,955.76 | 3,224,203.36 | 40.137520 | -104.698085 |
| 6,000.00 | 11.28 | 335.95 | 5,895.71 | 989.57 | -413.24 | 1,293,973.55 | 3,224,195.23 | 40.137569 | -104.698113 |
| 6,100.00 | 11.28 | 335.95 | 5,993.78 | 1,007.43 | -421.21 | 1,293,991.33 | 3,224,187.10 | 40.137618 | -104.698142 |
| 6,200.00 | 11.28 | 335.95 | 6,091.84 | 1,025.29 | -429.18 | 1,294,009.12 | 3,224,178.97 | 40.137667 | -104.698171 |

Survey Report - Geographic

| | | | |
|------------------|--------------------------|-------------------------------------|---|
| Company: | Crestone Peak Resources | Local Co-ordinate Reference: | Well MELBON RANCH 4C-17H-M265 |
| Project: | Sec 17 T2N-R65W | TVD Reference: | WELL @ 4979.00usft (Original Well Elev) |
| Site: | Melbon Ranch Pad | MD Reference: | WELL @ 4979.00usft (Original Well Elev) |
| Well: | MELBON RANCH 4C-17H-M265 | North Reference: | True |
| Wellbore: | Wellbore #1 | Survey Calculation Method: | Minimum Curvature |
| Design: | Design #1 19Mar18 kjs | Database: | EDM 5000.15 Single User Db |

| Planned Survey | | | | | | | | | |
|---|--------------------|----------------|-----------------------------|-----------------|-----------------|---------------------------|--------------------------|-----------|-------------|
| Measured Depth (usft) | Inclination (°) | Azimuth (°) | Vertical Depth (usft) | +N/-S (usft) | +E/-W (usft) | Map Northing (usft) | Map Easting (usft) | Latitude | Longitude |
| 6,300.00 | 11.28 | 335.95 | 6,189.91 | 1,043.15 | -437.15 | 1,294,026.91 | 3,224,170.84 | 40.137716 | -104.698199 |
| 6,400.00 | 11.28 | 335.95 | 6,287.98 | 1,061.02 | -445.12 | 1,294,044.70 | 3,224,162.71 | 40.137765 | -104.698228 |
| 6,500.00 | 11.28 | 335.95 | 6,386.05 | 1,078.88 | -453.09 | 1,294,062.48 | 3,224,154.58 | 40.137814 | -104.698256 |
| 6,524.75 | 11.28 | 335.95 | 6,410.32 | 1,083.30 | -455.06 | 1,294,066.89 | 3,224,152.57 | 40.137826 | -104.698263 |
| KOP 8/100 | | | | | | | | | |
| 6,600.00 | 10.47 | 8.00 | 6,484.29 | 1,096.80 | -457.11 | 1,294,080.37 | 3,224,150.40 | 40.137863 | -104.698270 |
| 6,700.00 | 14.04 | 42.59 | 6,582.12 | 1,114.75 | -447.62 | 1,294,098.41 | 3,224,159.72 | 40.137912 | -104.698236 |
| 6,800.00 | 20.28 | 59.90 | 6,677.68 | 1,132.40 | -424.38 | 1,294,116.27 | 3,224,182.80 | 40.137961 | -104.698153 |
| 6,900.00 | 27.42 | 68.92 | 6,769.12 | 1,149.40 | -387.84 | 1,294,133.60 | 3,224,219.18 | 40.138007 | -104.698023 |
| 7,000.00 | 34.91 | 74.37 | 6,854.64 | 1,165.42 | -338.72 | 1,294,150.06 | 3,224,268.16 | 40.138051 | -104.697847 |
| 7,100.00 | 42.57 | 78.07 | 6,932.59 | 1,180.14 | -277.97 | 1,294,165.33 | 3,224,328.78 | 40.138092 | -104.697630 |
| 7,200.00 | 50.32 | 80.83 | 7,001.44 | 1,193.29 | -206.76 | 1,294,179.12 | 3,224,399.86 | 40.138128 | -104.697375 |
| 7,300.00 | 58.12 | 83.02 | 7,059.87 | 1,204.60 | -126.50 | 1,294,191.16 | 3,224,480.02 | 40.138159 | -104.697088 |
| 7,400.00 | 65.95 | 84.87 | 7,106.72 | 1,213.85 | -38.73 | 1,294,201.21 | 3,224,567.70 | 40.138184 | -104.696774 |
| 7,500.00 | 73.81 | 86.51 | 7,141.09 | 1,220.87 | 54.83 | 1,294,209.08 | 3,224,661.19 | 40.138204 | -104.696439 |
| 7,600.00 | 81.67 | 88.01 | 7,162.32 | 1,225.52 | 152.35 | 1,294,214.61 | 3,224,758.67 | 40.138216 | -104.696091 |
| 7,700.00 | 89.54 | 89.46 | 7,169.98 | 1,227.71 | 251.95 | 1,294,217.70 | 3,224,858.24 | 40.138222 | -104.695734 |
| 7,705.87 | 90.00 | 89.55 | 7,170.00 | 1,227.76 | 257.82 | 1,294,217.80 | 3,224,864.11 | 40.138222 | -104.695713 |
| LP 90 Inc, 89.55 Az - MELBON RANCH 4C-17H-M265 TPZ | | | | | | | | | |
| 7,800.00 | 90.00 | 89.55 | 7,170.00 | 1,228.50 | 351.95 | 1,294,219.39 | 3,224,958.23 | 40.138225 | -104.695377 |
| 7,900.00 | 90.00 | 89.55 | 7,170.00 | 1,229.29 | 451.95 | 1,294,221.09 | 3,225,058.22 | 40.138227 | -104.695019 |
| 8,000.00 | 90.00 | 89.55 | 7,170.00 | 1,230.08 | 551.95 | 1,294,222.78 | 3,225,158.20 | 40.138229 | -104.694661 |
| 8,100.00 | 90.00 | 89.55 | 7,170.00 | 1,230.87 | 651.94 | 1,294,224.48 | 3,225,258.19 | 40.138231 | -104.694304 |
| 8,200.00 | 90.00 | 89.55 | 7,170.00 | 1,231.65 | 751.94 | 1,294,226.17 | 3,225,358.17 | 40.138233 | -104.693946 |
| 8,300.00 | 90.00 | 89.55 | 7,170.00 | 1,232.44 | 851.94 | 1,294,227.87 | 3,225,458.16 | 40.138235 | -104.693588 |
| 8,400.00 | 90.00 | 89.55 | 7,170.00 | 1,233.23 | 951.93 | 1,294,229.56 | 3,225,558.14 | 40.138237 | -104.693231 |
| 8,500.00 | 90.00 | 89.55 | 7,170.00 | 1,234.02 | 1,051.93 | 1,294,231.26 | 3,225,658.13 | 40.138240 | -104.692873 |
| 8,600.00 | 90.00 | 89.55 | 7,170.00 | 1,234.81 | 1,151.93 | 1,294,232.95 | 3,225,758.11 | 40.138242 | -104.692515 |
| 8,700.00 | 90.00 | 89.55 | 7,170.00 | 1,235.60 | 1,251.92 | 1,294,234.64 | 3,225,858.10 | 40.138244 | -104.692158 |
| 8,800.00 | 90.00 | 89.55 | 7,170.00 | 1,236.39 | 1,351.92 | 1,294,236.34 | 3,225,958.09 | 40.138246 | -104.691800 |
| 8,900.00 | 90.00 | 89.55 | 7,170.00 | 1,237.17 | 1,451.92 | 1,294,238.03 | 3,226,058.07 | 40.138248 | -104.691442 |
| 9,000.00 | 90.00 | 89.55 | 7,170.00 | 1,237.96 | 1,551.91 | 1,294,239.73 | 3,226,158.06 | 40.138250 | -104.691085 |
| 9,100.00 | 90.00 | 89.55 | 7,170.00 | 1,238.75 | 1,651.91 | 1,294,241.42 | 3,226,258.04 | 40.138253 | -104.690727 |
| 9,200.00 | 90.00 | 89.55 | 7,170.00 | 1,239.54 | 1,751.91 | 1,294,243.12 | 3,226,358.03 | 40.138255 | -104.690369 |
| 9,300.00 | 90.00 | 89.55 | 7,170.00 | 1,240.33 | 1,851.90 | 1,294,244.81 | 3,226,458.01 | 40.138257 | -104.690012 |
| 9,400.00 | 90.00 | 89.55 | 7,170.00 | 1,241.12 | 1,951.90 | 1,294,246.51 | 3,226,558.00 | 40.138259 | -104.689654 |
| 9,500.00 | 90.00 | 89.55 | 7,170.00 | 1,241.91 | 2,051.90 | 1,294,248.20 | 3,226,657.99 | 40.138261 | -104.689296 |
| 9,600.00 | 90.00 | 89.55 | 7,170.00 | 1,242.69 | 2,151.90 | 1,294,249.89 | 3,226,757.97 | 40.138263 | -104.688939 |
| 9,700.00 | 90.00 | 89.55 | 7,170.00 | 1,243.48 | 2,251.89 | 1,294,251.59 | 3,226,857.96 | 40.138265 | -104.688581 |
| 9,800.00 | 90.00 | 89.55 | 7,170.00 | 1,244.27 | 2,351.89 | 1,294,253.28 | 3,226,957.94 | 40.138268 | -104.688223 |
| 9,900.00 | 90.00 | 89.55 | 7,170.00 | 1,245.06 | 2,451.89 | 1,294,254.98 | 3,227,057.93 | 40.138270 | -104.687866 |
| 10,000.00 | 90.00 | 89.55 | 7,170.00 | 1,245.85 | 2,551.88 | 1,294,256.67 | 3,227,157.91 | 40.138272 | -104.687508 |
| 10,100.00 | 90.00 | 89.55 | 7,170.00 | 1,246.64 | 2,651.88 | 1,294,258.37 | 3,227,257.90 | 40.138274 | -104.687150 |
| 10,200.00 | 90.00 | 89.55 | 7,170.00 | 1,247.43 | 2,751.88 | 1,294,260.06 | 3,227,357.88 | 40.138276 | -104.686793 |
| 10,300.00 | 90.00 | 89.55 | 7,170.00 | 1,248.21 | 2,851.87 | 1,294,261.76 | 3,227,457.87 | 40.138278 | -104.686435 |
| 10,400.00 | 90.00 | 89.55 | 7,170.00 | 1,249.00 | 2,951.87 | 1,294,263.45 | 3,227,557.86 | 40.138280 | -104.686077 |
| 10,500.00 | 90.00 | 89.55 | 7,170.00 | 1,249.79 | 3,051.87 | 1,294,265.14 | 3,227,657.84 | 40.138282 | -104.685720 |
| 10,600.00 | 90.00 | 89.55 | 7,170.00 | 1,250.58 | 3,151.86 | 1,294,266.84 | 3,227,757.83 | 40.138285 | -104.685362 |
| 10,700.00 | 90.00 | 89.55 | 7,170.00 | 1,251.37 | 3,251.86 | 1,294,268.53 | 3,227,857.81 | 40.138287 | -104.685004 |
| 10,800.00 | 90.00 | 89.55 | 7,170.00 | 1,252.16 | 3,351.86 | 1,294,270.23 | 3,227,957.80 | 40.138289 | -104.684647 |
| 10,900.00 | 90.00 | 89.55 | 7,170.00 | 1,252.95 | 3,451.86 | 1,294,271.92 | 3,228,057.78 | 40.138291 | -104.684289 |
| 11,000.00 | 90.00 | 89.55 | 7,170.00 | 1,253.73 | 3,551.85 | 1,294,273.62 | 3,228,157.77 | 40.138293 | -104.683931 |
| 11,100.00 | 90.00 | 89.55 | 7,170.00 | 1,254.52 | 3,651.85 | 1,294,275.31 | 3,228,257.76 | 40.138295 | -104.683574 |
| 11,200.00 | 90.00 | 89.55 | 7,170.00 | 1,255.31 | 3,751.85 | 1,294,277.01 | 3,228,357.74 | 40.138297 | -104.683216 |
| 11,300.00 | 90.00 | 89.55 | 7,170.00 | 1,256.10 | 3,851.84 | 1,294,278.70 | 3,228,457.73 | 40.138299 | -104.682858 |

Survey Report - Geographic

| | | | |
|------------------|--------------------------|-------------------------------------|---|
| Company: | Crestone Peak Resources | Local Co-ordinate Reference: | Well MELBON RANCH 4C-17H-M265 |
| Project: | Sec 17 T2N-R65W | TVD Reference: | WELL @ 4979.00usft (Original Well Elev) |
| Site: | Melbon Ranch Pad | MD Reference: | WELL @ 4979.00usft (Original Well Elev) |
| Well: | MELBON RANCH 4C-17H-M265 | North Reference: | True |
| Wellbore: | Wellbore #1 | Survey Calculation Method: | Minimum Curvature |
| Design: | Design #1 19Mar18 kjs | Database: | EDM 5000.15 Single User Db |

| Planned Survey | | | | | | | | | |
|-------------------------------------|-----------------|-------------|-----------------------|--------------|--------------|---------------------|--------------------|-----------|-------------|
| Measured Depth (usft) | Inclination (°) | Azimuth (°) | Vertical Depth (usft) | +N/-S (usft) | +E/-W (usft) | Map Northing (usft) | Map Easting (usft) | Latitude | Longitude |
| 11,400.00 | 90.00 | 89.55 | 7,170.00 | 1,256.89 | 3,951.84 | 1,294,280.39 | 3,228,557.71 | 40.138302 | -104.682501 |
| 11,500.00 | 90.00 | 89.55 | 7,170.00 | 1,257.68 | 4,051.84 | 1,294,282.09 | 3,228,657.70 | 40.138304 | -104.682143 |
| 11,600.00 | 90.00 | 89.55 | 7,170.00 | 1,258.47 | 4,151.83 | 1,294,283.78 | 3,228,757.68 | 40.138306 | -104.681785 |
| 11,700.00 | 90.00 | 89.55 | 7,170.00 | 1,259.25 | 4,251.83 | 1,294,285.48 | 3,228,857.67 | 40.138308 | -104.681428 |
| 11,800.00 | 90.00 | 89.55 | 7,170.00 | 1,260.04 | 4,351.83 | 1,294,287.17 | 3,228,957.66 | 40.138310 | -104.681070 |
| 11,900.00 | 90.00 | 89.55 | 7,170.00 | 1,260.83 | 4,451.82 | 1,294,288.87 | 3,229,057.64 | 40.138312 | -104.680713 |
| 12,000.00 | 90.00 | 89.55 | 7,170.00 | 1,261.62 | 4,551.82 | 1,294,290.56 | 3,229,157.63 | 40.138314 | -104.680355 |
| 12,083.54 | 90.00 | 89.55 | 7,170.00 | 1,262.28 | 4,635.36 | 1,294,291.98 | 3,229,241.15 | 40.138316 | -104.680056 |
| TD at 12084.54 | | | | | | | | | |
| 12,084.54 | 90.00 | 89.55 | 7,170.00 | 1,262.29 | 4,636.36 | 1,294,291.99 | 3,229,242.15 | 40.138316 | -104.680052 |
| MELBON RANCH 4C-17H-M265 BHL | | | | | | | | | |

| Design Targets | | | | | | | | | |
|--|---------------|--------------|------------|--------------|--------------|-----------------|----------------|-----------|-------------|
| Target Name - hit/miss target - Shape | Dip Angle (°) | Dip Dir. (°) | TVD (usft) | +N/-S (usft) | +E/-W (usft) | Northing (usft) | Easting (usft) | Latitude | Longitude |
| MELBON RANCH 4C-17 - plan hits target center - Point | 0.00 | 0.53 | 7,170.00 | 1,262.29 | 4,636.36 | 1,294,291.99 | 3,229,242.15 | 40.138316 | -104.680052 |
| MELBON RANCH 4C-17 - plan hits target center - Point | 0.00 | 0.52 | 7,170.00 | 1,227.76 | 257.82 | 1,294,217.80 | 3,224,864.11 | 40.138222 | -104.695713 |

| Plan Annotations | | | | | |
|-----------------------|-----------------------|-------------------|--------------|---------------------------|--|
| Measured Depth (usft) | Vertical Depth (usft) | Local Coordinates | | | |
| | | +N/-S (usft) | +E/-W (usft) | Comment | |
| 200 | 200 | 0 | 0 | Start Build 2.00 | |
| 700 | 697 | 44 | 0 | Begin 2/100 Build & Turn | |
| 929 | 923 | 84 | -9 | Hold 11.28 Inc, 335.95 Az | |
| 6525 | 6410 | 1083 | -455 | KOP 8/100 | |
| 7706 | 7170 | 1228 | 258 | LP 90 Inc, 89.55 Az | |
| 12,084 | 7170 | 1262 | 4635 | TD at 12084.54 | |

| | | |
|-------------------|--------------------|-------------|
| Checked By: _____ | Approved By: _____ | Date: _____ |
|-------------------|--------------------|-------------|



Crestone Peak Resources

Sec 17 T2N-R65W

Melbon Ranch Pad

MELBON RANCH 4C-17H-M265

Wellbore #1

Design #1 19Mar18 kjs

Anticollision Summary Report

17 May, 2018

Anticollision Summary Report

| | | | |
|---------------------------|--------------------------|-------------------------------------|---|
| Company: | Crestone Peak Resources | Local Co-ordinate Reference: | Well MELBON RANCH 4C-17H-M265 |
| Project: | Sec 17 T2N-R65W | TVD Reference: | WELL @ 4979.00usft (Original Well Elev) |
| Reference Site: | Melbon Ranch Pad | MD Reference: | WELL @ 4979.00usft (Original Well Elev) |
| Site Error: | 0.00 usft | North Reference: | True |
| Reference Well: | MELBON RANCH 4C-17H-M265 | Survey Calculation Method: | Minimum Curvature |
| Well Error: | 0.00 usft | Output errors are at | 2.00 sigma |
| Reference Wellbore | Wellbore #1 | Database: | EDM 5000.15 Single User Db |
| Reference Design: | Design #1 19Mar18 kjs | Offset TVD Reference: | Offset Datum |

| | | | |
|-------------------------------------|---|-----------------------|---------------------|
| Reference | Design #1 19Mar18 kjs | | |
| Filter type: | NO GLOBAL FILTER: Using user defined selection & filtering criteria | | |
| Interpolation Method: | MD Interval 100.00usft | Error Model: | ISCWSA |
| Depth Range: | Unlimited | Scan Method: | Closest Approach 3D |
| Results Limited by: | Maximum center-center distance of 9,999.98 usft | Error Surface: | Pedal Curve |
| Warning Levels Evaluated at: | 2.00 Sigma | Casing Method: | Not applied |

| | | | | |
|----------------------------|------------------|-------------------------------------|------------------|---------------------|
| Survey Tool Program | Date | 5/17/2018 | | |
| From (usft) | To (usft) | Survey (Wellbore) | Tool Name | Description |
| 0.00 | 12,084.35 | Design #1 19Mar18 kjs (Wellbore #1) | MWD | OWSG MWD - Standard |

| Summary | | | | | | |
|--|---------------------------------|------------------------------|---------------------------------|----------------------------------|-------------------|---------------------|
| Site Name | Reference Measured Depth (usft) | Offset Measured Depth (usft) | Distance Between Centres (usft) | Distance Between Ellipses (usft) | Separation Factor | Warning |
| Offset Well - Wellbore - Design | | | | | | |
| Existing Wells (Melbon Ranch) | | | | | | |
| ADAMSON 13N-28HZ - KMG - MWD | 12,084.54 | 6,604.00 | 4,713.79 | 4,553.34 | 29.379 | CC, ES, SF |
| ADAMSON 14N-28HZ - KMG - MWD | 12,084.54 | 6,510.00 | 4,946.44 | 4,794.39 | 32.531 | CC, ES, SF |
| ADAMSON 28N-28HZ - KMG - MWD | 12,084.54 | 6,699.00 | 5,502.27 | 5,349.48 | 36.012 | CC, ES, SF |
| ADAMSON 35C-28HZ - KMG - MWD | 12,084.54 | 6,697.00 | 4,791.12 | 4,635.34 | 30.754 | CC, ES, SF |
| ADAMSON 36N-28HZ - KMG - MWD | 12,084.54 | 6,510.00 | 5,072.13 | 4,920.91 | 33.542 | CC, ES, SF |
| ADAMSON 37C-28HZ - KMG - MWD | 12,084.54 | 6,699.00 | 5,242.36 | 5,090.14 | 34.439 | CC, ES, SF |
| ADAMSON 37C-28HZX - KMG - MWD | 12,084.54 | 6,699.00 | 5,242.36 | 5,090.14 | 34.439 | CC, ES, SF |
| BYDALEK 28C-20HZ - KMG - MWD | 9,488.75 | 12,039.00 | 3,037.90 | 2,936.31 | 29.902 | CC |
| BYDALEK 28C-20HZ - KMG - MWD | 9,500.00 | 12,039.00 | 3,037.92 | 2,936.18 | 29.861 | ES |
| BYDALEK 28C-20HZ - KMG - MWD | 11,300.00 | 12,039.00 | 3,536.87 | 3,399.02 | 25.657 | SF |
| BYDALEK 28N-20HZ - KMG - MWD | 9,565.57 | 11,830.00 | 3,032.77 | 2,928.38 | 29.054 | CC |
| BYDALEK 28N-20HZ - KMG - MWD | 9,600.00 | 11,830.00 | 3,032.96 | 2,928.14 | 28.934 | ES |
| BYDALEK 28N-20HZ - KMG - MWD | 11,300.00 | 11,830.00 | 3,493.70 | 3,355.32 | 25.249 | SF |
| BYDALEK 29C-20HZ - KMG - MWD | 8,392.67 | 11,880.00 | 3,041.41 | 2,973.25 | 44.617 | CC |
| BYDALEK 29C-20HZ - KMG - MWD | 8,500.00 | 11,880.00 | 3,043.31 | 2,973.08 | 43.337 | ES |
| BYDALEK 29C-20HZ - KMG - MWD | 10,600.00 | 11,880.00 | 3,757.99 | 3,630.26 | 29.421 | SF |
| BYDALEK 29N-20HZ - KMG - MWD | 8,275.90 | 11,671.00 | 3,037.66 | 2,972.30 | 46.472 | CC |
| BYDALEK 29N-20HZ - KMG - MWD | 8,300.00 | 11,671.00 | 3,037.76 | 2,971.97 | 46.175 | ES |
| BYDALEK 29N-20HZ - KMG - MWD | 10,600.00 | 11,671.00 | 3,824.77 | 3,697.08 | 29.955 | SF |
| BYDALEK 30C-20HZ - KMG - MWD | 7,311.31 | 11,950.00 | 2,984.54 | 2,927.56 | 52.379 | CC |
| BYDALEK 30C-20HZ - KMG - MWD | 7,400.00 | 11,950.00 | 2,985.31 | 2,927.34 | 51.497 | ES |
| BYDALEK 30C-20HZ - KMG - MWD | 9,800.00 | 11,950.00 | 3,780.32 | 3,659.33 | 31.246 | SF |
| BYDALEK 3N-20HZ - KMG - MWD | 8,991.86 | 11,597.00 | 3,196.28 | 3,112.34 | 38.078 | CC |
| BYDALEK 3N-20HZ - KMG - MWD | 9,000.00 | 11,597.00 | 3,196.29 | 3,112.22 | 38.022 | ES |
| BYDALEK 3N-20HZ - KMG - MWD | 11,100.00 | 11,597.00 | 3,828.90 | 3,695.72 | 28.751 | SF |
| BYDALEK 4N-20HZ - KMG - MWD | 7,733.70 | 11,755.00 | 3,039.74 | 2,980.93 | 51.689 | CC |
| BYDALEK 4N-20HZ - KMG - MWD | 7,800.00 | 11,755.00 | 3,040.36 | 2,980.37 | 50.681 | ES |
| BYDALEK 4N-20HZ - KMG - MWD | 10,100.00 | 11,755.00 | 3,850.38 | 3,727.46 | 31.324 | SF |
| CAMPBELL JF 17-13D - GW O&G - MWD | 9,905.55 | 7,382.23 | 130.28 | 18.97 | 1.170 | Level 3, CC, ES, SF |
| CAMPBELL JF 17-41D - GW O&G - MWD | 12,084.54 | 7,314.57 | 1,516.20 | 1,355.58 | 9.440 | CC, ES, SF |
| CAMPBELL JF 17-6D - GW O&G - No Survey | 951.21 | 730.00 | 4,321.76 | 4,317.03 | 914.882 | CC, ES |
| CAMPBELL JF 17-6D - GW O&G - No Survey | 12,084.54 | 730.00 | 6,596.31 | 6,542.32 | 122.168 | SF |
| CAMPBELL JF 17-6D-1 - GW O&G - MWD | 10,304.02 | 7,169.92 | 1,450.37 | 1,334.04 | 12.468 | CC, ES |
| CAMPBELL JF 17-6D-1 - GW O&G - MWD | 10,600.00 | 7,170.51 | 1,480.26 | 1,356.61 | 11.971 | SF |
| CAMPBELL JF 17-7D - GW O&G - MWD | 11,231.01 | 7,083.00 | 1,453.35 | 1,316.13 | 10.591 | CC |
| CAMPBELL JF 17-7D - GW O&G - MWD | 11,300.00 | 7,081.53 | 1,454.98 | 1,315.64 | 10.442 | ES |
| CAMPBELL JF 17-7D - GW O&G - MWD | 11,500.00 | 7,077.21 | 1,478.02 | 1,333.91 | 10.256 | SF |

CC - Min centre to center distance or convergent point, SF - min separation factor, ES - min ellipse separation

Anticollision Summary Report

| | | | |
|---------------------------|--------------------------|-------------------------------------|---|
| Company: | Crestone Peak Resources | Local Co-ordinate Reference: | Well MELBON RANCH 4C-17H-M265 |
| Project: | Sec 17 T2N-R65W | TVD Reference: | WELL @ 4979.00usft (Original Well Elev) |
| Reference Site: | Melbon Ranch Pad | MD Reference: | WELL @ 4979.00usft (Original Well Elev) |
| Site Error: | 0.00 usft | North Reference: | True |
| Reference Well: | MELBON RANCH 4C-17H-M265 | Survey Calculation Method: | Minimum Curvature |
| Well Error: | 0.00 usft | Output errors are at | 2.00 sigma |
| Reference Wellbore | Wellbore #1 | Database: | EDM 5000.15 Single User Db |
| Reference Design: | Design #1 19Mar18 kjs | Offset TVD Reference: | Offset Datum |

| Summary | | | | | | |
|----------------------------------|---------------------------------|------------------------------|---------------------------------|----------------------------------|-------------------|------------|
| Site Name | Reference Measured Depth (usft) | Offset Measured Depth (usft) | Distance Between Centres (usft) | Distance Between Ellipses (usft) | Separation Factor | Warning |
| Offset Well - Wellbore - Design | | | | | | |
| Existing Wells (Melbon Ranch) | | | | | | |
| CAMPBELL JF 17-8D - GW O&G - MWD | 11,931.94 | 7,212.57 | 803.97 | 643.95 | 5.024 | CC, ES |
| CAMPBELL JF 17-8D - GW O&G - MWD | 12,000.00 | 7,214.02 | 806.84 | 645.02 | 4.986 | SF |
| CAMPBELL JF 17-9D - GW O&G - MWD | 10,555.20 | 7,180.09 | 800.82 | 679.16 | 6.582 | CC |
| CAMPBELL JF 17-9D - GW O&G - MWD | 10,600.00 | 7,178.97 | 802.07 | 678.76 | 6.504 | ES |
| CAMPBELL JF 17-9D - GW O&G - MWD | 10,700.00 | 7,176.45 | 813.80 | 687.79 | 6.458 | SF |
| COOK 28N-16HZ - KMG - MWD | 12,084.54 | 9,939.35 | 3,241.57 | 3,157.21 | 38.429 | CC, ES, SF |
| CROWDER 1-18 - KMG - No Survey | 6,982.16 | 6,822.89 | 2,451.97 | 2,413.91 | 64.415 | CC, ES |
| CROWDER 1-18 - KMG - No Survey | 8,600.00 | 7,153.00 | 3,164.06 | 3,107.32 | 55.762 | SF |
| CROWDER 15C-18HZ - KMG - MWD | 6,884.09 | 9,910.56 | 1,424.52 | 1,347.53 | 18.502 | CC |
| CROWDER 15C-18HZ - KMG - MWD | 6,900.00 | 9,908.45 | 1,424.78 | 1,347.44 | 18.420 | ES |
| CROWDER 15C-18HZ - KMG - MWD | 7,000.00 | 9,896.30 | 1,438.39 | 1,359.02 | 18.122 | SF |
| CROWDER 15N-18HZ - KMG - MWD | 6,777.82 | 9,680.49 | 2,096.64 | 2,018.13 | 26.707 | CC, ES |
| CROWDER 15N-18HZ - KMG - MWD | 6,900.00 | 9,654.06 | 2,110.38 | 2,030.59 | 26.450 | SF |
| CROWDER 16C-19HZ - KMG - MWD | 7,077.99 | 9,431.85 | 683.52 | 618.88 | 10.574 | CC |
| CROWDER 16C-19HZ - KMG - MWD | 7,100.00 | 9,430.18 | 684.21 | 618.23 | 10.371 | ES |
| CROWDER 16C-19HZ - KMG - MWD | 7,200.00 | 9,423.78 | 704.24 | 633.00 | 9.885 | SF |
| CROWDER 16N-19HZ - KMG - MWD | 6,930.51 | 9,317.38 | 866.44 | 795.32 | 12.184 | CC, ES |
| CROWDER 16N-19HZ - KMG - MWD | 7,100.00 | 9,292.89 | 901.74 | 825.51 | 11.829 | SF |
| CROWDER 36N-18HZ - KMG - MWD | 6,781.41 | 9,769.31 | 1,702.01 | 1,621.35 | 21.102 | CC, ES |
| CROWDER 36N-18HZ - KMG - MWD | 6,900.00 | 9,747.52 | 1,715.72 | 1,633.50 | 20.868 | SF |
| CROWDER 38N-19HZ - KMG - MWD | 7,113.34 | 9,248.95 | 360.22 | 297.00 | 5.697 | CC, ES |
| CROWDER 38N-19HZ - KMG - MWD | 7,200.00 | 9,242.10 | 375.44 | 303.51 | 5.219 | SF |
| DECHANT 13-9 - KMG - No Survey | 12,084.54 | 7,103.00 | 3,372.24 | 3,233.06 | 24.229 | CC, ES, SF |
| DECHANT 14-9 - KMG - MWD | 12,084.54 | 7,376.68 | 4,136.20 | 3,998.81 | 30.105 | CC, ES, SF |
| DECHANT 23-9 - KMG - MWD | 12,084.54 | 7,636.00 | 5,062.73 | 4,924.00 | 36.494 | CC, ES, SF |
| DECHANT 31-19 - KMG - Gyro | 0.00 | 0.00 | 2,972.94 | | | |
| DECHANT 31-19 - KMG - Gyro | 6,800.00 | 6,778.46 | 3,505.07 | 3,451.88 | 65.886 | SF |
| DECHANT 32-19 - KMG - Gyro | 204.46 | 208.76 | 4,008.71 | 4,007.64 | 3,749.067 | CC, ES |
| DECHANT 32-19 - KMG - Gyro | 10,700.00 | 6,675.25 | 7,213.17 | 7,129.26 | 85.968 | SF |
| DECHANT 35-9 - KMG - MWD | 12,084.54 | 7,241.72 | 3,353.91 | 3,215.17 | 24.174 | CC, ES, SF |
| DECHANT 36-9 - KMG - MWD | 12,084.54 | 7,549.15 | 4,127.59 | 3,999.80 | 32.301 | CC, ES, SF |
| DECHANT 38-8 - KMG - MWD | 12,084.54 | 7,253.97 | 2,828.39 | 2,664.49 | 17.257 | CC, ES, SF |
| DECHANT 41-19 - KMG - Gyro | 100.00 | 82.47 | 1,852.56 | 1,852.27 | 6,556.264 | CC |
| DECHANT 41-19 - KMG - Gyro | 200.00 | 182.19 | 1,852.71 | 1,851.75 | 1,931.081 | ES |
| DECHANT 41-19 - KMG - Gyro | 8,600.00 | 7,133.73 | 3,432.07 | 3,367.94 | 53.515 | SF |
| DECHANT 42-19 - KMG - No Survey | 200.00 | 198.00 | 3,557.93 | 3,557.08 | 4,181.679 | CC, ES |
| DECHANT 42-19 - KMG - No Survey | 11,300.00 | 7,168.00 | 6,581.62 | 6,490.34 | 72.100 | SF |
| DECHANT 9-19A - KMG - No Survey | 200.00 | 193.00 | 4,482.50 | 4,481.66 | 5,324.356 | CC, ES |
| DECHANT 9-19A - KMG - No Survey | 12,084.54 | 7,163.00 | 7,795.86 | 7,689.11 | 73.027 | SF |
| DECHANT X 08-15 - KMG - Gyro | 10,514.56 | 7,130.29 | 3,384.43 | 3,266.04 | 28.587 | CC |
| DECHANT X 08-15 - KMG - Gyro | 10,600.00 | 7,128.77 | 3,385.51 | 3,264.71 | 28.027 | ES |
| DECHANT X 08-15 - KMG - Gyro | 11,900.00 | 7,101.17 | 3,656.92 | 3,507.90 | 24.539 | SF |
| DECHANT X 08-24D - KMG - MWD | 10,046.51 | 7,301.19 | 4,099.95 | 3,992.77 | 38.253 | CC |
| DECHANT X 08-24D - KMG - MWD | 10,200.00 | 7,301.74 | 4,102.82 | 3,991.58 | 36.884 | ES |
| DECHANT X 08-24D - KMG - MWD | 12,000.00 | 7,308.71 | 4,541.54 | 4,392.73 | 30.519 | SF |
| DECHANT X 19-3 - KMG - Gyro | 0.00 | 0.00 | 3,902.33 | | | |
| DECHANT X 19-3 - KMG - Gyro | 6,800.00 | 6,639.32 | 4,265.86 | 4,212.50 | 79.958 | SF |
| DOM RED X 20-02D - KMG - Gyro | 207.74 | 165.67 | 3,240.10 | 3,239.17 | 3,484.467 | CC, ES |
| DOM RED X 20-02D - KMG - Gyro | 11,100.00 | 7,052.22 | 4,716.27 | 4,600.48 | 40.731 | SF |
| DOM RED X 20-3 - NOBLE - Gyro | 100.00 | 34.65 | 2,572.15 | 2,571.95 | 10,000.000 | CC, ES |
| DOM RED X 20-3 - NOBLE - Gyro | 10,400.00 | 7,197.57 | 3,321.25 | 3,215.17 | 31.311 | SF |
| DOM RED X20-2D - KMG - No Survey | 200.00 | 163.00 | 3,036.23 | 3,035.44 | 3,852.253 | CC, ES |
| DOM RED X20-2D - KMG - No Survey | 11,000.00 | 7,133.00 | 5,020.64 | 4,922.83 | 51.328 | SF |

CC - Min centre to center distance or convergent point, SF - min separation factor, ES - min ellipse separation

Anticollision Summary Report

| | | | |
|---------------------------|--------------------------|-------------------------------------|---|
| Company: | Crestone Peak Resources | Local Co-ordinate Reference: | Well MELBON RANCH 4C-17H-M265 |
| Project: | Sec 17 T2N-R65W | TVD Reference: | WELL @ 4979.00usft (Original Well Elev) |
| Reference Site: | Melbon Ranch Pad | MD Reference: | WELL @ 4979.00usft (Original Well Elev) |
| Site Error: | 0.00 usft | North Reference: | True |
| Reference Well: | MELBON RANCH 4C-17H-M265 | Survey Calculation Method: | Minimum Curvature |
| Well Error: | 0.00 usft | Output errors are at | 2.00 sigma |
| Reference Wellbore | Wellbore #1 | Database: | EDM 5000.15 Single User Db |
| Reference Design: | Design #1 19Mar18 kjs | Offset TVD Reference: | Offset Datum |

| Summary | | | | | | |
|------------------------------------|---------------------------------|------------------------------|---------------------------------|----------------------------------|-------------------|------------|
| Site Name | Reference Measured Depth (usft) | Offset Measured Depth (usft) | Distance Between Centres (usft) | Distance Between Ellipses (usft) | Separation Factor | Warning |
| Offset Well - Wellbore - Design | | | | | | |
| Existing Wells (Melbon Ranch) | | | | | | |
| EWERTZ 3-18 - KMG - No Survey | 6,689.08 | 6,594.52 | 3,693.72 | 3,655.74 | 97.272 | CC |
| EWERTZ 3-18 - KMG - No Survey | 6,700.00 | 6,605.12 | 3,693.78 | 3,655.74 | 97.097 | ES |
| EWERTZ 3-18 - KMG - No Survey | 7,400.00 | 7,129.72 | 3,959.11 | 3,916.23 | 92.321 | SF |
| FOUR WAY 1 - KMG - No Survey | 12,084.54 | 7,087.00 | 2,402.98 | 2,327.32 | 31.759 | CC, ES, SF |
| FOUR WAY 12-16 - KMG - Gyro | 12,084.54 | 7,056.43 | 1,206.87 | 1,112.53 | 12.793 | CC, ES, SF |
| HAYMAKER 29N-9HZ - KMG - MWD | 12,084.54 | 6,600.00 | 3,333.70 | 3,194.81 | 24.002 | CC, ES, SF |
| HAYMAKER 4C-9HZ - KMG - MWD | 12,084.54 | 6,729.00 | 3,258.09 | 3,113.47 | 22.528 | CC, ES, SF |
| HAYMAKER 4N-9HZ - KMG - MWD | 12,084.54 | 6,506.00 | 3,117.83 | 2,973.42 | 21.589 | CC, ES, SF |
| HSR-WARNER 6-18 - KMG - No Survey | 6,616.67 | 6,511.68 | 2,991.91 | 2,951.90 | 74.784 | CC, ES |
| HSR-WARNER 6-18 - KMG - No Survey | 6,900.00 | 6,780.12 | 3,045.97 | 3,004.17 | 72.862 | SF |
| HUDCO 16-18 - KMG - Gyro | 0.00 | 0.00 | 1,144.69 | | | |
| HUDCO 16-18 - KMG - Gyro | 6,700.00 | 6,614.00 | 1,838.80 | 1,788.29 | 36.404 | SF |
| HUDCO 24-18 - KMG - MWD | 6,612.68 | 6,608.52 | 941.38 | 888.78 | 17.899 | CC, ES |
| HUDCO 24-18 - KMG - MWD | 6,700.00 | 6,703.42 | 946.30 | 892.94 | 17.735 | SF |
| HUDCO 39-18 - KMG - MWD | 2,904.32 | 2,949.97 | 295.26 | 268.02 | 10.841 | CC, ES |
| HUDCO 39-18 - KMG - MWD | 3,000.00 | 3,034.60 | 298.10 | 270.09 | 10.641 | SF |
| HUDCO 40-18 - KMG - MWD | 7,144.50 | 7,038.39 | 119.95 | 67.25 | 2.276 | CC, ES, SF |
| HUDCO 9-18 - KMG - Gyro | 5,995.90 | 5,904.04 | 320.34 | 272.24 | 6.660 | CC |
| HUDCO 9-18 - KMG - Gyro | 6,100.00 | 6,006.18 | 320.94 | 272.00 | 6.558 | ES |
| HUDCO 9-18 - KMG - Gyro | 6,500.00 | 6,403.35 | 331.19 | 279.35 | 6.388 | SF |
| LUCERO X 20-04 - KMG - Gyro | 234.56 | 216.27 | 1,902.47 | 1,901.27 | 1,577.773 | CC, ES |
| LUCERO X 20-04 - KMG - Gyro | 9,500.00 | 7,140.29 | 3,554.37 | 3,472.80 | 43.573 | SF |
| MARKHAM 13-8 - KMG - MWD | 7,753.29 | 7,230.11 | 3,251.66 | 3,194.55 | 56.938 | CC |
| MARKHAM 13-8 - KMG - MWD | 7,800.00 | 7,229.57 | 3,252.09 | 3,194.34 | 56.315 | ES |
| MARKHAM 13-8 - KMG - MWD | 10,000.00 | 7,220.19 | 3,953.70 | 3,853.68 | 39.527 | SF |
| MARKHAM 34-8 - KMG - MWD | 7,508.19 | 7,272.12 | 2,846.72 | 2,789.57 | 49.816 | CC, ES |
| MARKHAM 34-8 - KMG - MWD | 9,400.00 | 7,302.18 | 3,495.09 | 3,402.80 | 37.873 | SF |
| MARKHAM 35-8 - KMG - MWD | 8,531.38 | 7,369.40 | 2,805.36 | 2,731.88 | 38.180 | CC |
| MARKHAM 35-8 - KMG - MWD | 8,600.00 | 7,368.18 | 2,806.19 | 2,731.23 | 37.434 | ES |
| MARKHAM 35-8 - KMG - MWD | 10,000.00 | 7,344.93 | 3,166.42 | 3,063.12 | 30.652 | SF |
| MEGUIRE 28C-16HZ - KMG - MWD | 12,084.54 | 12,818.73 | 2,793.29 | 2,662.24 | 21.315 | CC, ES, SF |
| MEGUIRE 29C-16HZ - KMG - MWD | 12,084.54 | 12,894.43 | 1,641.93 | 1,512.30 | 12.667 | CC, ES, SF |
| MEGUIRE 29N-16HZ - KMG - MWD | 12,084.54 | 12,523.29 | 1,907.79 | 1,777.76 | 14.672 | CC, ES, SF |
| MEGUIRE 30N-16HZ - KMG - MWD | 12,084.54 | 12,620.51 | 838.26 | 707.58 | 6.415 | CC, ES, SF |
| MEGUIRE 3N-16HZ - KMG - No Survey | 12,084.54 | 7,100.00 | 5,663.02 | 5,525.86 | 41.287 | CC, ES, SF |
| MEGUIRE 4N-16HZ - KMG - MWD | 12,084.54 | 12,663.86 | 1,362.54 | 1,232.20 | 10.454 | CC, ES, SF |
| MEGUIRE X 21-04 - KMG - Gyro | 12,084.54 | 7,033.47 | 3,376.25 | 3,219.92 | 21.597 | CC, ES, SF |
| MEGUIRE X 21-06 - KMG - No Survey | 12,084.54 | 7,092.00 | 5,220.51 | 5,083.01 | 37.968 | CC, ES, SF |
| MEGUIRE X 21-5J1 - KMG - No Survey | 12,084.54 | 7,097.00 | 4,822.58 | 4,675.51 | 32.790 | CC, ES, SF |
| MELBON 12C-8HZ - KMG - MWD | 7,809.29 | 7,049.75 | 284.20 | 230.98 | 5.339 | CC, ES, SF |
| MELBON 12N-8HZ - KMG - MWD | 7,300.00 | 6,893.84 | 404.78 | 356.25 | 8.340 | SF |
| MELBON 12N-8HZ - KMG - MWD | 7,395.11 | 6,921.63 | 398.28 | 351.19 | 8.459 | CC, ES |
| MELBON 19C-8HZ - KMG - MWD | 8,607.87 | 7,032.12 | 319.75 | 253.91 | 4.856 | CC, ES, SF |
| MELBON 19N-E8HZ - KMG - MWD | 8,938.64 | 6,965.00 | 407.43 | 340.44 | 6.082 | CC, ES |
| MELBON 19N-E8HZ - KMG - MWD | 9,000.00 | 6,965.00 | 412.02 | 343.30 | 5.995 | SF |
| MELBON 19N-W8HZ - KMG - MWD | 8,261.56 | 6,981.95 | 378.73 | 322.32 | 6.714 | CC, ES |
| MELBON 19N-W8HZ - KMG - MWD | 8,300.00 | 6,981.54 | 380.67 | 323.27 | 6.632 | SF |
| MELBON 23C-8HZ - KMG - MWD | 9,603.63 | 7,129.00 | 361.12 | 268.37 | 3.893 | CC, ES |
| MELBON 23C-8HZ - KMG - MWD | 9,700.00 | 7,144.63 | 373.19 | 276.73 | 3.869 | SF |
| MELBON 23N-8HZ - KMG - MWD | 9,719.27 | 7,029.00 | 483.29 | 396.55 | 5.571 | CC, ES |
| MELBON 23N-8HZ - KMG - MWD | 9,800.00 | 7,029.00 | 489.99 | 401.33 | 5.527 | SF |
| MELBON RANCH 1 - V O&G - No Survey | 525.31 | 490.61 | 1,088.54 | 1,085.97 | 424.600 | CC |
| MELBON RANCH 1 - V O&G - No Survey | 700.00 | 663.47 | 1,088.82 | 1,085.25 | 304.829 | ES |

CC - Min centre to center distance or convergent point, SF - min separation factor, ES - min ellipse separation

Anticollision Summary Report

| | | | |
|---------------------------|--------------------------|-------------------------------------|---|
| Company: | Crestone Peak Resources | Local Co-ordinate Reference: | Well MELBON RANCH 4C-17H-M265 |
| Project: | Sec 17 T2N-R65W | TVD Reference: | WELL @ 4979.00usft (Original Well Elev) |
| Reference Site: | Melbon Ranch Pad | MD Reference: | WELL @ 4979.00usft (Original Well Elev) |
| Site Error: | 0.00 usft | North Reference: | True |
| Reference Well: | MELBON RANCH 4C-17H-M265 | Survey Calculation Method: | Minimum Curvature |
| Well Error: | 0.00 usft | Output errors are at | 2.00 sigma |
| Reference Wellbore | Wellbore #1 | Database: | EDM 5000.15 Single User Db |
| Reference Design: | Design #1 19Mar18 kjs | Offset TVD Reference: | Offset Datum |

| Summary | | | | | | |
|--|---------------------------------|------------------------------|---------------------------------|----------------------------------|-------------------|---------------------|
| Site Name | Reference Measured Depth (usft) | Offset Measured Depth (usft) | Distance Between Centres (usft) | Distance Between Ellipses (usft) | Separation Factor | Warning |
| Offset Well - Wellbore - Design | | | | | | |
| Existing Wells (Melbon Ranch) | | | | | | |
| MELBON RANCH 1 - V O&G - No Survey | 8,800.00 | 7,136.00 | 1,246.09 | 1,184.32 | 20.172 | SF |
| MELBON RANCH 13-17 - CPR - MWD | 7,861.10 | 7,218.17 | 381.71 | 321.17 | 6.305 | CC, ES |
| MELBON RANCH 13-17 - CPR - MWD | 7,900.00 | 7,218.01 | 383.69 | 322.60 | 6.280 | SF |
| MELBON RANCH 14-17 - CPR - MWD | 1,597.33 | 1,686.31 | 954.78 | 941.22 | 70.402 | CC |
| MELBON RANCH 14-17 - CPR - MWD | 1,700.00 | 1,778.62 | 955.67 | 941.14 | 65.755 | ES |
| MELBON RANCH 14-17 - CPR - MWD | 8,400.00 | 7,259.86 | 1,995.49 | 1,928.77 | 29.913 | SF |
| MELBON RANCH 17-14 - V O&G - No Survey | 200.00 | 166.00 | 1,062.11 | 1,061.31 | 1,338.335 | CC |
| MELBON RANCH 17-14 - V O&G - No Survey | 300.00 | 265.98 | 1,062.56 | 1,061.23 | 798.392 | ES |
| MELBON RANCH 17-14 - V O&G - No Survey | 8,900.00 | 7,136.00 | 1,572.11 | 1,509.11 | 24.952 | SF |
| MELBON RANCH 23-17 - CPR - MWD | 9,300.00 | 7,277.88 | 364.17 | 271.34 | 3.923 | SF |
| MELBON RANCH 23-17 - CPR - MWD | 9,307.01 | 7,277.81 | 364.10 | 271.32 | 3.924 | CC, ES |
| MELBON RANCH 24-17 - CPR - MWD | 9,083.53 | 7,211.81 | 1,894.29 | 1,808.13 | 21.987 | CC |
| MELBON RANCH 24-17 - CPR - MWD | 9,100.00 | 7,211.58 | 1,894.36 | 1,807.86 | 21.900 | ES |
| MELBON RANCH 24-17 - CPR - MWD | 9,600.00 | 7,204.00 | 1,963.42 | 1,868.33 | 20.649 | SF |
| MELBON RANCH 2-4-17 - CPR - MWD | 8,668.75 | 7,264.27 | 75.58 | 1.20 | 1.016 | Level 3, CC, ES, SF |
| MELBON RANCH 2-8-17 - CPR - MWD | 3,288.78 | 3,754.60 | 2,328.61 | 2,296.86 | 73.357 | CC |
| MELBON RANCH 2-8-17 - CPR - MWD | 8,500.00 | 7,327.80 | 2,355.78 | 2,276.30 | 29.638 | ES |
| MELBON RANCH 2-8-17 - CPR - MWD | 9,300.00 | 7,322.58 | 2,496.55 | 2,404.99 | 27.267 | SF |
| MELBON RANCH 33-17 - CPR - MWD | 10,623.62 | 7,350.89 | 1,334.75 | 1,198.76 | 9.815 | CC, ES |
| MELBON RANCH 33-17 - CPR - MWD | 10,800.00 | 7,353.14 | 1,346.36 | 1,207.75 | 9.714 | SF |
| MELBON RANCH 34-17 - CPR - MWD | 10,445.37 | 7,177.49 | 1,917.54 | 1,798.30 | 16.081 | CC |
| MELBON RANCH 34-17 - CPR - MWD | 10,500.00 | 7,179.08 | 1,918.32 | 1,798.00 | 15.943 | ES |
| MELBON RANCH 34-17 - CPR - MWD | 10,800.00 | 7,187.86 | 1,950.03 | 1,825.05 | 15.603 | SF |
| MELBON RANCH 3A-17H - CPR - MWD | 563.73 | 553.80 | 6.03 | 2.30 | 1.618 | CC, ES, SF |
| MELBON RANCH 3B-17H - CPR - MWD | 705.80 | 695.17 | 10.86 | 6.11 | 2.287 | CC, ES, SF |
| MELBON RANCH 43-17 43-17 - CPR - Gyro | 12,084.54 | 7,096.17 | 1,309.42 | 1,149.45 | 8.186 | CC, ES, SF |
| MELBON RANCH 4-6-17 - CPR - MWD | 9,751.85 | 7,262.08 | 1,122.55 | 1,022.06 | 11.170 | CC, ES |
| MELBON RANCH 4-6-17 - CPR - MWD | 9,900.00 | 7,261.89 | 1,132.28 | 1,029.54 | 11.020 | SF |
| MELBON RANCH 4-8-17 - CPR - Gyro | 9,889.01 | 7,061.55 | 2,157.35 | 2,055.20 | 21.118 | CC |
| MELBON RANCH 4-8-17 - CPR - Gyro | 9,900.00 | 7,061.33 | 2,157.38 | 2,054.99 | 21.070 | ES |
| MELBON RANCH 4-8-17 - CPR - Gyro | 10,400.00 | 7,050.26 | 2,217.02 | 2,106.01 | 19.971 | SF |
| MELBON RANCH 6-4-17 - CPR - MWD | 11,067.75 | 7,300.38 | 878.24 | 736.74 | 6.207 | CC |
| MELBON RANCH 6-4-17 - CPR - MWD | 11,100.00 | 7,301.21 | 878.83 | 736.68 | 6.182 | ES, SF |
| Melbon Ranch 6-8-17 - CPR - MWD | 11,176.72 | 7,315.53 | 2,387.84 | 2,241.78 | 16.348 | CC |
| Melbon Ranch 6-8-17 - CPR - MWD | 11,200.00 | 7,315.64 | 2,387.95 | 2,241.36 | 16.290 | ES |
| Melbon Ranch 6-8-17 - CPR - MWD | 11,700.00 | 7,318.01 | 2,444.50 | 2,289.37 | 15.757 | SF |
| MELBON RANCH 8-4-17 - CPR - MWD | 12,084.54 | 7,172.88 | 1,003.20 | 855.73 | 6.803 | CC, ES, SF |
| MELBON RANCH 8-6-17 - CPR - MWD | 12,084.54 | 7,184.13 | 2,060.03 | 1,901.54 | 12.998 | CC, ES, SF |
| MELBON RANCH 8-8-17 - CPR - MWD | 12,084.54 | 7,462.85 | 3,328.26 | 3,165.47 | 20.446 | CC, ES, SF |
| MELBON RANCH E UNIT 1 - CPR - Gyro | 11,430.48 | 7,077.81 | 1,433.18 | 1,290.98 | 10.079 | CC, ES |
| MELBON RANCH E UNIT 1 - CPR - Gyro | 11,600.00 | 7,078.96 | 1,443.17 | 1,298.34 | 9.965 | SF |
| MEQUIRE 21-3P - KMG - No Survey | 12,084.54 | 7,087.00 | 4,154.14 | 4,018.02 | 30.518 | CC, ES, SF |
| MUSE 1 - KMG - Gyro | 6,786.69 | 6,622.53 | 1,654.07 | 1,605.80 | 34.262 | CC |
| MUSE 1 - KMG - Gyro | 6,800.00 | 6,636.53 | 1,654.14 | 1,605.76 | 34.193 | ES |
| MUSE 1 - KMG - Gyro | 7,100.00 | 6,909.02 | 1,693.91 | 1,643.14 | 33.362 | SF |
| MUSE 2 - KMG - No Survey | 3,698.03 | 3,653.19 | 1,414.27 | 1,391.19 | 61.279 | CC |
| MUSE 2 - KMG - No Survey | 3,900.00 | 3,851.26 | 1,414.82 | 1,390.42 | 57.984 | ES |
| MUSE 2 - KMG - No Survey | 6,600.00 | 6,499.29 | 1,526.70 | 1,485.33 | 36.909 | SF |
| PALMER 11-20 - KMG - No Survey | 200.00 | 163.00 | 4,979.23 | 4,978.44 | 6,317.250 | CC, ES |
| PALMER 11-20 - KMG - No Survey | 12,084.54 | 7,133.00 | 6,407.33 | 6,275.40 | 48.565 | SF |
| PALMER X 20-05 - KMG - Gyro | 100.00 | 59.23 | 3,161.86 | 3,161.62 | 10,000.000 | CC |
| PALMER X 20-05 - KMG - Gyro | 200.00 | 159.99 | 3,161.97 | 3,161.09 | 3,585.107 | ES |
| PALMER X 20-05 - KMG - Gyro | 10,900.00 | 7,102.82 | 5,222.48 | 5,115.18 | 48.674 | SF |

CC - Min centre to center distance or convergent point, SF - min separation factor, ES - min ellipse separation

Anticollision Summary Report

| | | | |
|---------------------------|--------------------------|-------------------------------------|---|
| Company: | Crestone Peak Resources | Local Co-ordinate Reference: | Well MELBON RANCH 4C-17H-M265 |
| Project: | Sec 17 T2N-R65W | TVD Reference: | WELL @ 4979.00usft (Original Well Elev) |
| Reference Site: | Melbon Ranch Pad | MD Reference: | WELL @ 4979.00usft (Original Well Elev) |
| Site Error: | 0.00 usft | North Reference: | True |
| Reference Well: | MELBON RANCH 4C-17H-M265 | Survey Calculation Method: | Minimum Curvature |
| Well Error: | 0.00 usft | Output errors are at | 2.00 sigma |
| Reference Wellbore | Wellbore #1 | Database: | EDM 5000.15 Single User Db |
| Reference Design: | Design #1 19Mar18 kjs | Offset TVD Reference: | Offset Datum |

| Summary | | | | | | |
|---|--|---------------------------------------|--|---|----------------------|------------|
| Site Name | Reference Measured Depth (usft) | Offset Measured Depth (usft) | Distance Between Centres (usft) | Distance Between Ellipses (usft) | Separation Factor | Warning |
| Offset Well - Wellbore - Design | | | | | | |
| Existing Wells (Melbon Ranch) | | | | | | |
| PALMER X 20-06 - KMG - Gyro | 100.00 | 36.03 | 3,795.04 | 3,794.83 | 10,000.000 | CC, ES |
| PALMER X 20-06 - KMG - Gyro | 11,600.00 | 7,100.00 | 5,056.45 | 4,927.72 | 39.278 | SF |
| PALMER X 20-20 - KMG - Gyro | 209.47 | 183.33 | 4,077.55 | 4,076.54 | 4,047.105 | CC, ES |
| PALMER X 20-20 - KMG - Gyro | 11,800.00 | 7,160.99 | 5,934.52 | 5,805.38 | 45.954 | SF |
| POTTS X 18-10 - KMG - Gyro | 6,526.14 | 6,410.32 | 1,844.02 | 1,791.87 | 35.364 | CC, ES |
| POTTS X 18-10 - KMG - Gyro | 6,700.00 | 6,574.39 | 1,860.47 | 1,806.96 | 34.768 | SF |
| POTTS X 18-15 - KMG - Gyro | 212.50 | 236.10 | 2,353.54 | 2,352.35 | 1,972.518 | CC |
| POTTS X 18-15 - KMG - Gyro | 300.00 | 318.67 | 2,354.08 | 2,352.28 | 1,311.009 | ES |
| POTTS X 18-15 - KMG - Gyro | 6,800.00 | 6,668.55 | 2,641.80 | 2,588.47 | 49.537 | SF |
| RUSSIAN FIDDLER 15N-18HZ - KMG - MWD | 6,690.13 | 12,713.00 | 2,716.01 | 2,622.36 | 29.001 | CC |
| RUSSIAN FIDDLER 15N-18HZ - KMG - MWD | 6,700.00 | 12,713.00 | 2,716.07 | 2,622.34 | 28.979 | ES |
| RUSSIAN FIDDLER 15N-18HZ - KMG - MWD | 6,900.00 | 12,713.00 | 2,743.58 | 2,648.21 | 28.767 | SF |
| RUSSIAN FIDDLER 36C-18HZ - KMG - MWD | 6,701.09 | 12,872.00 | 3,111.17 | 3,004.19 | 29.080 | CC, ES |
| RUSSIAN FIDDLER 36C-18HZ - KMG - MWD | 6,900.00 | 12,872.00 | 3,137.80 | 3,029.07 | 28.858 | SF |
| RUSSIAN FIDDLER 36N-18HZ - KMG - MWD | 6,625.79 | 12,128.00 | 3,701.75 | 3,612.07 | 41.277 | CC, ES |
| RUSSIAN FIDDLER 36N-18HZ - KMG - MWD | 6,800.00 | 12,128.00 | 3,720.47 | 3,630.13 | 41.181 | SF |
| RUSSIAN FIDDLER 36N-18HZ - KMG - MWD | 6,660.71 | 12,416.00 | 3,547.03 | 3,449.89 | 36.515 | CC, ES |
| RUSSIAN FIDDLER 36N-18HZ - KMG - MWD | 6,800.00 | 12,416.00 | 3,559.69 | 3,461.89 | 36.399 | SF |
| RUSSIAN FIDDLER 37C-18HZ - KMG - MWD | 6,760.00 | 12,903.00 | 2,425.06 | 2,345.77 | 30.585 | CC, ES |
| RUSSIAN FIDDLER 37C-18HZ - KMG - MWD | 7,400.00 | 12,903.00 | 2,630.28 | 2,542.11 | 29.833 | SF |
| RUSSIAN FIDDLER 37N-18HZ - KMG - MWD | 6,706.65 | 12,711.00 | 2,527.38 | 2,441.84 | 29.544 | CC, ES |
| RUSSIAN FIDDLER 37N-18HZ - KMG - MWD | 7,000.00 | 12,711.00 | 2,577.47 | 2,489.29 | 29.227 | SF |
| SANDLIN-WELD COUNTY 1 - KMG - No Survey | 11,579.04 | 7,107.00 | 1,496.23 | 1,361.96 | 11.144 | CC |
| SANDLIN-WELD COUNTY 1 - KMG - No Survey | 11,600.00 | 7,107.00 | 1,496.37 | 1,361.44 | 11.090 | ES |
| SANDLIN-WELD COUNTY 1 - KMG - No Survey | 11,900.00 | 7,107.00 | 1,530.26 | 1,388.31 | 10.780 | SF |
| SANDLIN-WELD-COUNTY UNIT 2 - KMG - Gyro | 8,835.52 | 7,117.36 | 1,467.05 | 1,390.27 | 19.106 | CC |
| SANDLIN-WELD-COUNTY UNIT 2 - KMG - Gyro | 8,900.00 | 7,117.12 | 1,468.47 | 1,389.93 | 18.697 | ES |
| SANDLIN-WELD-COUNTY UNIT 2 - KMG - Gyro | 9,300.00 | 7,115.65 | 1,538.83 | 1,450.95 | 17.512 | SF |
| SARCHET 1 - KMG - No Survey | 11,080.11 | 7,109.00 | 4,200.91 | 4,079.76 | 34.674 | CC |
| SARCHET 1 - KMG - No Survey | 11,200.00 | 7,109.00 | 4,202.62 | 4,078.63 | 33.893 | ES |
| SARCHET 1 - KMG - No Survey | 12,084.54 | 7,109.00 | 4,319.32 | 4,177.33 | 30.420 | SF |
| SARCHET 15N-20HZ - KMG - MWD | 10,712.78 | 6,737.24 | 2,050.59 | 1,931.81 | 17.264 | CC, ES |
| SARCHET 15N-20HZ - KMG - MWD | 11,100.00 | 6,739.60 | 2,086.83 | 1,962.35 | 16.764 | SF |
| SARCHET 16N-20HZ - KMG - No Survey | 12,084.54 | 7,113.00 | 2,995.80 | 2,847.94 | 20.262 | CC, ES, SF |
| SARCHET 20-1 - KMG - Gyro | 11,805.44 | 7,116.44 | 2,986.97 | 2,834.61 | 19.604 | CC |
| SARCHET 20-1 - KMG - Gyro | 11,900.00 | 7,114.77 | 2,988.46 | 2,833.95 | 19.342 | ES |
| SARCHET 20-1 - KMG - Gyro | 12,084.54 | 7,111.55 | 2,999.97 | 2,841.64 | 18.947 | SF |
| SARCHET 20-2 - NOBLE - No Survey | 10,530.57 | 7,112.00 | 3,187.68 | 3,080.84 | 29.834 | CC |
| SARCHET 20-2 - NOBLE - No Survey | 10,600.00 | 7,112.00 | 3,188.44 | 3,080.01 | 29.404 | ES |
| SARCHET 20-2 - NOBLE - No Survey | 11,600.00 | 7,112.00 | 3,362.29 | 3,236.27 | 26.681 | SF |
| SARCHET 36G-20HZ - KMG - Proposed | 10,121.06 | 7,123.00 | 2,906.08 | 2,809.75 | 30.170 | CC |
| SARCHET 36G-20HZ - KMG - Proposed | 10,200.00 | 7,123.00 | 2,907.15 | 2,809.07 | 29.639 | ES |
| SARCHET 36G-20HZ - KMG - Proposed | 11,100.00 | 7,123.00 | 3,066.53 | 2,952.91 | 26.989 | SF |
| SARCHET 36N-20HZ - KMG - MWD | 10,156.25 | 6,645.21 | 2,006.56 | 1,903.94 | 19.554 | CC |
| SARCHET 36N-20HZ - KMG - MWD | 10,200.00 | 6,645.26 | 2,007.04 | 1,903.54 | 19.391 | ES |
| SARCHET 36N-20HZ - KMG - MWD | 10,600.00 | 6,645.73 | 2,055.04 | 1,944.85 | 18.649 | SF |
| SARCHET 37C-20HZ - KMG - Proposed | 10,181.14 | 7,122.00 | 2,839.15 | 2,741.29 | 29.012 | CC |
| SARCHET 37C-20HZ - KMG - Proposed | 10,200.00 | 7,122.00 | 2,839.21 | 2,740.93 | 28.888 | ES |
| SARCHET 37C-20HZ - KMG - Proposed | 11,100.00 | 7,122.00 | 2,984.14 | 2,870.05 | 26.156 | SF |
| SARCHET 37N-20HZ - KMG - Proposed | 10,214.76 | 7,122.00 | 2,873.94 | 2,775.22 | 29.112 | CC |
| SARCHET 37N-20HZ - KMG - Proposed | 10,300.00 | 7,122.00 | 2,875.21 | 2,774.59 | 28.575 | ES |
| SARCHET 37N-20HZ - KMG - Proposed | 11,200.00 | 7,122.00 | 3,038.13 | 2,922.27 | 26.222 | SF |
| SARCHET 38C-20HZ - KMG - Proposed | 12,084.54 | 7,104.00 | 3,006.08 | 2,858.20 | 20.328 | CC, ES, SF |

CC - Min centre to center distance or convergent point, SF - min separation factor, ES - min ellipse separation

Anticollision Summary Report

| | | | |
|---------------------------|--------------------------|-------------------------------------|---|
| Company: | Crestone Peak Resources | Local Co-ordinate Reference: | Well MELBON RANCH 4C-17H-M265 |
| Project: | Sec 17 T2N-R65W | TVD Reference: | WELL @ 4979.00usft (Original Well Elev) |
| Reference Site: | Melbon Ranch Pad | MD Reference: | WELL @ 4979.00usft (Original Well Elev) |
| Site Error: | 0.00 usft | North Reference: | True |
| Reference Well: | MELBON RANCH 4C-17H-M265 | Survey Calculation Method: | Minimum Curvature |
| Well Error: | 0.00 usft | Output errors are at | 2.00 sigma |
| Reference Wellbore | Wellbore #1 | Database: | EDM 5000.15 Single User Db |
| Reference Design: | Design #1 19Mar18 kjs | Offset TVD Reference: | Offset Datum |

Summary

| Site Name | Reference Measured Depth (usft) | Offset Measured Depth (usft) | Distance Between Centres (usft) | Distance Between Ellipses (usft) | Separation Factor | Warning |
|--|--|---------------------------------------|--|---|----------------------|-----------------|
| Offset Well - Wellbore - Design | | | | | | |
| Existing Wells (Melbon Ranch) | | | | | | |
| SARCHET X 20-8 - KMG - Gyro | 11,965.75 | 7,080.66 | 4,590.82 | 4,434.45 | 29.360 | CC |
| SARCHET X 20-8 - KMG - Gyro | 12,084.54 | 7,080.37 | 4,592.35 | 4,433.13 | 28.841 | ES, SF |
| SEATON 2-18 - KMG - No Survey | 6,776.94 | 6,653.95 | 2,834.18 | 2,796.91 | 76.040 | CC, ES |
| SEATON 2-18 - KMG - No Survey | 8,100.00 | 7,168.00 | 3,475.50 | 3,426.32 | 70.676 | SF |
| SEATON 7-18 - KMG - No Survey | 6,639.91 | 6,538.49 | 1,677.31 | 1,638.10 | 42.775 | CC, ES |
| SEATON 7-18 - KMG - No Survey | 6,900.00 | 6,784.12 | 1,721.28 | 1,680.26 | 41.965 | SF |
| SEATON 8-18 - KMG - Gyro | 6,786.39 | 6,667.44 | 936.42 | 887.87 | 19.289 | CC |
| SEATON 8-18 - KMG - Gyro | 6,800.00 | 6,680.61 | 936.50 | 887.84 | 19.249 | ES |
| SEATON 8-18 - KMG - Gyro | 7,000.00 | 6,859.15 | 957.81 | 907.44 | 19.016 | SF |
| SUNFLOWER 24N-17HZ - KMG - MWD | 11,055.27 | 12,650.00 | 222.36 | 90.04 | 1.680 | CC |
| SUNFLOWER 24N-17HZ - KMG - MWD | 11,100.00 | 12,650.00 | 226.82 | 84.85 | 1.598 | ES, SF |
| SUNFLOWER 25G-17HZ - KMG - MWD | 10,105.38 | 12,664.00 | 196.29 | 85.00 | 1.764 | CC |
| SUNFLOWER 25G-17HZ - KMG - MWD | 10,200.00 | 12,664.00 | 217.90 | 79.85 | 1.578 | ES, SF |
| SUNFLOWER 40C-17HZ - KMG - MWD | 12,084.54 | 12,840.00 | 288.55 | 141.43 | 1.961 | CC, ES, SF |
| SUNFLOWER 40N-17HZ - KMG - MWD | 12,084.54 | 12,495.00 | 444.20 | 267.08 | 2.508 | CC, ES, SF |
| SUNFLOWER 7C-17HZ - KMG - MWD | 2,777.54 | 1,800.00 | 7,646.03 | 7,629.84 | 472.347 | CC |
| SUNFLOWER 7C-17HZ - KMG - MWD | 2,800.00 | 1,800.00 | 7,646.06 | 7,629.77 | 469.448 | ES |
| SUNFLOWER 7C-17HZ - KMG - MWD | 12,084.54 | 1,800.00 | 7,896.54 | 7,786.92 | 72.034 | SF |
| SUNFLOWER 7N-17HZ - KMG - MWD | 10,931.07 | 12,615.00 | 145.97 | 19.45 | 1.154 | Level 3, CC |
| SUNFLOWER 7N-17HZ - KMG - MWD | 11,000.00 | 12,615.00 | 161.42 | 12.73 | 1.086 | Level 3, ES, SF |
| SUNFLOWER 8N-17HZ - KMG - MWD | 11,440.14 | 12,665.00 | 231.17 | 86.95 | 1.603 | CC |
| SUNFLOWER 8N-17HZ - KMG - MWD | 11,500.00 | 12,665.00 | 238.80 | 85.96 | 1.562 | ES, SF |
| THOMASON 1 - PETERSON - No Survey | 12,084.54 | 7,091.00 | 2,573.86 | 2,467.86 | 24.281 | CC, ES, SF |
| THOMASON 14-16 - KMG - MWD | 12,084.54 | 7,341.46 | 3,316.03 | 3,190.98 | 26.517 | CC, ES, SF |
| THOMASON 16-5 - KMG - Gyro | 12,084.54 | 7,081.70 | 1,598.81 | 1,483.54 | 13.870 | CC, ES, SF |
| THOMASON 21-16 - KMG - MWD | 12,084.54 | 7,304.30 | 3,299.29 | 3,209.70 | 36.830 | CC, ES, SF |
| THOMASON 23-16 - KMG - MWD | 12,084.54 | 7,215.25 | 3,307.87 | 3,214.25 | 35.333 | CC, ES, SF |
| THOMASON 25-16 - KMG - No Survey | 12,084.54 | 945.00 | 6,662.03 | 6,617.48 | 149.545 | CC, ES, SF |
| THOMASON 25-16R - KMG - MWD | 12,084.54 | 7,289.58 | 3,049.48 | 2,989.31 | 50.675 | CC, ES, SF |
| THOMASON 34N-9HZ - KMG - MWD | 12,084.54 | 11,537.00 | 3,073.30 | 2,828.71 | 12.565 | CC, ES, SF |
| THOMASON 36-16 - KMG - MWD | 12,084.54 | 7,415.86 | 3,904.16 | 3,775.47 | 30.339 | CC, ES, SF |
| THOMASON 6-16 - KMG - MWD | 12,084.54 | 7,254.00 | 2,661.77 | 2,592.71 | 38.540 | CC, ES, SF |
| THOMASON X 16-11 - KMG - No Survey | 12,084.54 | 7,084.00 | 2,487.86 | 2,425.89 | 40.146 | CC, ES, SF |
| THOMASON X 16-12 - KMG - Gyro | 12,084.54 | 7,046.92 | 1,251.41 | 1,148.28 | 12.134 | CC, ES, SF |
| THOMASON X 16-4 - KMG - No Survey | 12,084.54 | 7,087.00 | 2,374.78 | 2,247.10 | 18.600 | CC, ES, SF |
| THOMASON X16-13 - KMG - Gyro | 12,084.54 | 7,105.96 | 2,066.10 | 1,919.80 | 14.123 | CC, ES, SF |
| THOMSEN 1C-18HZ - KMG - MWD | 6,980.50 | 14,563.00 | 2,663.73 | 2,567.62 | 27.714 | CC |
| THOMSEN 1C-18HZ - KMG - MWD | 7,000.00 | 14,563.00 | 2,663.97 | 2,567.31 | 27.560 | ES |
| THOMSEN 1C-18HZ - KMG - MWD | 7,700.00 | 14,563.00 | 2,949.08 | 2,830.74 | 24.919 | SF |
| THOMSEN 1N-18HZ - KMG - Proposed | 6,888.61 | 13,958.15 | 3,135.19 | 3,036.45 | 31.754 | CC |
| THOMSEN 1N-18HZ - KMG - Proposed | 6,900.00 | 13,958.15 | 3,135.26 | 3,036.30 | 31.681 | ES |
| THOMSEN 1N-18HZ - KMG - Proposed | 7,600.00 | 13,958.15 | 3,403.66 | 3,288.13 | 29.461 | SF |
| THOMSEN 2N-18HZ - KMG - MWD | 7,012.86 | 13,966.00 | 2,145.31 | 2,060.73 | 25.365 | CC, ES |
| THOMSEN 2N-18HZ - KMG - MWD | 7,900.00 | 13,966.00 | 2,534.45 | 2,416.68 | 21.519 | SF |
| THOMSEN 36C-18HZ - KMG - MWD | 6,766.77 | 12,540.24 | 2,745.31 | 2,619.25 | 21.777 | CC |
| THOMSEN 36C-18HZ - KMG - MWD | 6,800.00 | 12,562.67 | 2,746.17 | 2,619.10 | 21.612 | ES, SF |
| THOMSEN 36N-18HZ - KMG - MWD | 6,752.14 | 12,824.58 | 2,458.99 | 2,324.31 | 18.258 | CC, ES |
| THOMSEN 36N-18HZ - KMG - MWD | 6,900.00 | 12,825.50 | 2,478.55 | 2,341.92 | 18.140 | SF |
| THOMSEN 3N-18HZ - KMG - MWD | 7,163.02 | 14,148.00 | 2,308.32 | 2,247.81 | 38.147 | CC |
| THOMSEN 3N-18HZ - KMG - MWD | 7,200.00 | 14,148.00 | 2,308.93 | 2,247.18 | 37.393 | ES |
| THOMSEN 3N-18HZ - KMG - MWD | 8,800.00 | 14,148.00 | 3,053.21 | 2,927.94 | 24.373 | SF |
| THOMSEN 4N-18HZ - KMG - MWD | 7,388.52 | 14,792.00 | 1,653.94 | 1,598.98 | 30.089 | CC |
| THOMSEN 4N-18HZ - KMG - MWD | 7,400.00 | 14,792.00 | 1,654.01 | 1,598.73 | 29.919 | ES |

CC - Min centre to center distance or convergent point, SF - min separation factor, ES - min ellipse separation

Anticollision Summary Report

| | | | |
|---------------------------|--------------------------|-------------------------------------|---|
| Company: | Crestone Peak Resources | Local Co-ordinate Reference: | Well MELBON RANCH 4C-17H-M265 |
| Project: | Sec 17 T2N-R65W | TVD Reference: | WELL @ 4979.00usft (Original Well Elev) |
| Reference Site: | Melbon Ranch Pad | MD Reference: | WELL @ 4979.00usft (Original Well Elev) |
| Site Error: | 0.00 usft | North Reference: | True |
| Reference Well: | MELBON RANCH 4C-17H-M265 | Survey Calculation Method: | Minimum Curvature |
| Well Error: | 0.00 usft | Output errors are at | 2.00 sigma |
| Reference Wellbore | Wellbore #1 | Database: | EDM 5000.15 Single User Db |
| Reference Design: | Design #1 19Mar18 kjs | Offset TVD Reference: | Offset Datum |

| Summary | | | | | | |
|---------------------------------|---------------------------------|------------------------------|---------------------------------|----------------------------------|-------------------|---------|
| Site Name | Reference Measured Depth (usft) | Offset Measured Depth (usft) | Distance Between Centres (usft) | Distance Between Ellipses (usft) | Separation Factor | Warning |
| Offset Well - Wellbore - Design | | | | | | |
| Existing Wells (Melbon Ranch) | | | | | | |
| THOMSEN 4N-18HZ - KMG - MWD | 8,700.00 | 14,792.00 | 2,207.13 | 2,082.68 | 17.734 | SF |
| UPRR 38 PAN AM X 1 - KMG - Gyro | 0.00 | 0.00 | 2,645.88 | | | |
| UPRR 38 PAN AM X 1 - KMG - Gyro | 100.00 | 64.26 | 2,645.92 | 2,645.66 | 10,000.000 | ES |
| UPRR 38 PAN AM X 1 - KMG - Gyro | 9,200.00 | 7,082.74 | 4,677.09 | 4,607.32 | 67.035 | SF |
| WALTERS 21-18 - KMG - MWD | 6,663.45 | 6,656.50 | 2,762.97 | 2,710.40 | 52.557 | CC, ES |
| WALTERS 21-18 - KMG - MWD | 7,000.00 | 6,925.72 | 2,831.84 | 2,776.82 | 51.465 | SF |
| WALTERS 25-18 - KMG - MWD | 6,600.00 | 6,670.88 | 2,212.39 | 2,151.11 | 36.103 | CC, ES |
| WALTERS 25-18 - KMG - MWD | 6,800.00 | 6,858.90 | 2,242.76 | 2,180.16 | 35.828 | SF |
| WALTERS 28-18 - KMG - MWD | 1,187.41 | 592.00 | 3,040.14 | 3,034.08 | 501.474 | CC |
| WALTERS 28-18 - KMG - MWD | 1,200.00 | 592.00 | 3,040.17 | 3,034.06 | 497.729 | ES |
| WALTERS 28-18 - KMG - MWD | 7,600.00 | 7,431.61 | 3,865.49 | 3,806.63 | 65.680 | SF |
| WARNER 12-18 - KMG - MWD | 1,558.96 | 1,099.92 | 3,354.46 | 3,344.29 | 329.735 | CC |
| WARNER 12-18 - KMG - MWD | 1,600.00 | 1,124.00 | 3,354.62 | 3,344.15 | 320.397 | ES |
| WARNER 12-18 - KMG - MWD | 6,900.00 | 7,300.81 | 4,431.05 | 4,370.94 | 73.707 | SF |
| WARNER 14-18 - KMG - No Survey | 3,438.84 | 3,417.01 | 3,401.28 | 3,379.87 | 158.868 | CC |
| WARNER 14-18 - KMG - No Survey | 4,000.00 | 3,967.33 | 3,403.05 | 3,377.97 | 135.649 | ES |
| WARNER 14-18 - KMG - No Survey | 6,800.00 | 6,710.68 | 3,507.43 | 3,464.47 | 81.637 | SF |
| WARNER 18-18 - KMG - MWD | 1,181.07 | 681.00 | 3,372.12 | 3,365.58 | 515.706 | CC |
| WARNER 18-18 - KMG - MWD | 1,200.00 | 681.00 | 3,372.17 | 3,365.56 | 509.826 | ES |
| WARNER 18-18 - KMG - MWD | 7,100.00 | 7,225.34 | 4,075.56 | 4,017.68 | 70.406 | SF |
| WARNER 22-18 - KMG - MWD | 1,510.39 | 1,017.30 | 3,354.56 | 3,345.33 | 363.458 | CC, ES |
| WARNER 22-18 - KMG - MWD | 6,900.00 | 6,791.55 | 3,708.53 | 3,652.79 | 66.533 | SF |
| WARNER 23-18 - KMG - MWD | 6,461.76 | 6,477.90 | 2,678.49 | 2,620.94 | 46.539 | CC |
| WARNER 23-18 - KMG - MWD | 6,500.00 | 6,508.06 | 2,678.55 | 2,620.75 | 46.335 | ES |
| WARNER 23-18 - KMG - MWD | 6,700.00 | 6,677.92 | 2,700.00 | 2,640.94 | 45.719 | SF |
| WARNER 31-18 - KMG - MWD | 1,220.97 | 725.03 | 3,363.76 | 3,356.91 | 490.993 | CC, ES |
| WARNER 31-18 - KMG - MWD | 6,800.00 | 5,036.92 | 4,909.30 | 4,859.43 | 98.431 | SF |
| WARNER 32-18 - KMG - MWD | 1,186.97 | 699.74 | 3,369.44 | 3,362.75 | 503.348 | CC |
| WARNER 32-18 - KMG - MWD | 1,200.00 | 706.75 | 3,369.46 | 3,362.69 | 497.306 | ES |
| WARNER 32-18 - KMG - MWD | 6,800.00 | 5,730.00 | 4,694.88 | 4,640.84 | 86.883 | SF |
| WARNER 33-18 - KMG - MWD | 0.00 | 27.83 | 3,225.76 | | | |
| WARNER 33-18 - KMG - MWD | 200.00 | 197.73 | 3,226.43 | 3,225.47 | 3,353.472 | ES |
| WARNER 33-18 - KMG - MWD | 6,800.00 | 7,232.75 | 5,023.07 | 4,950.69 | 69.400 | SF |
| WARNER 35-18 - KMG - MWD | 100.00 | 119.00 | 3,235.31 | 3,234.99 | 9,940.862 | CC |
| WARNER 35-18 - KMG - MWD | 200.00 | 212.00 | 3,235.66 | 3,234.64 | 3,188.224 | ES |
| WARNER 35-18 - KMG - MWD | 6,900.00 | 6,875.66 | 4,299.21 | 4,242.52 | 75.836 | SF |

Anticollision Summary Report

| | | | |
|---------------------------|--------------------------|-------------------------------------|---|
| Company: | Crestone Peak Resources | Local Co-ordinate Reference: | Well MELBON RANCH 4C-17H-M265 |
| Project: | Sec 17 T2N-R65W | TVD Reference: | WELL @ 4979.00usft (Original Well Elev) |
| Reference Site: | Melbon Ranch Pad | MD Reference: | WELL @ 4979.00usft (Original Well Elev) |
| Site Error: | 0.00 usft | North Reference: | True |
| Reference Well: | MELBON RANCH 4C-17H-M265 | Survey Calculation Method: | Minimum Curvature |
| Well Error: | 0.00 usft | Output errors are at | 2.00 sigma |
| Reference Wellbore | Wellbore #1 | Database: | EDM 5000.15 Single User Db |
| Reference Design: | Design #1 19Mar18 kjs | Offset TVD Reference: | Offset Datum |

| Summary | | | | | | |
|---|---------------------------------|------------------------------|---------------------------------|----------------------------------|-------------------|-----------------|
| Site Name | Reference Measured Depth (usft) | Offset Measured Depth (usft) | Distance Between Centres (usft) | Distance Between Ellipses (usft) | Separation Factor | Warning |
| Offset Well - Wellbore - Design | | | | | | |
| Melbon Ranch Pad | | | | | | |
| MELBON RANCH 4D-17H-M265 - Wellbore #1 - Design | 200.00 | 200.00 | 9.99 | 8.99 | 10.058 | CC |
| MELBON RANCH 4D-17H-M265 - Wellbore #1 - Design | 12,084.54 | 12,217.65 | 173.62 | -1.81 | 0.990 | Level 3, ES, SF |
| MELBON RANCH 4E-17H-M265 - Wellbore #1 - Plan #2 | 200.00 | 200.00 | 20.00 | 19.00 | 20.137 | CC, ES |
| MELBON RANCH 4E-17H-M265 - Wellbore #1 - Plan #2 | 12,081.09 | 11,952.69 | 436.81 | 172.29 | 1.651 | SF |
| MELBON RANCH 4F-17H-M265 - Wellbore #1 - Plan #2 | 200.00 | 200.00 | 30.00 | 29.00 | 30.208 | CC, ES |
| MELBON RANCH 4F-17H-M265 - Wellbore #1 - Plan #2 | 12,084.54 | 12,117.57 | 989.90 | 722.33 | 3.700 | SF |
| MELBON RANCH 4G-17H-M265 - Wellbore #1 - Plan #2 | 200.00 | 200.00 | 40.00 | 39.00 | 40.279 | CC, ES |
| MELBON RANCH 4G-17H-M265 - Wellbore #1 - Plan #2 | 12,084.54 | 11,916.42 | 1,062.51 | 794.09 | 3.958 | SF |
| MELBON RANCH 4H-17H-M265 - Wellbore #1 - Design | 200.00 | 200.00 | 49.99 | 48.99 | 50.342 | CC, ES |
| MELBON RANCH 4H-17H-M265 - Wellbore #1 - Design | 12,084.54 | 11,926.51 | 1,611.39 | 1,342.11 | 5.984 | SF |
| MELBON RANCH 4I-17H-M265 - Wellbore #1 - Design # | 200.00 | 200.00 | 60.13 | 59.14 | 60.560 | CC, ES |
| MELBON RANCH 4I-17H-M265 - Wellbore #1 - Design # | 12,084.54 | 12,083.66 | 1,864.03 | 1,596.81 | 6.976 | SF |
| MELBON RANCH 4J-17H-M265 - Wellbore #1 - Design # | 200.00 | 200.00 | 70.00 | 69.01 | 70.496 | CC, ES |
| MELBON RANCH 4J-17H-M265 - Wellbore #1 - Design # | 12,084.54 | 11,996.28 | 2,225.67 | 1,955.95 | 8.252 | SF |
| MELBON RANCH 4K-17H-M265 - Wellbore #1 - Design | 200.00 | 200.00 | 80.00 | 79.01 | 80.567 | CC, ES |
| MELBON RANCH 4K-17H-M265 - Wellbore #1 - Design | 12,084.54 | 12,108.94 | 2,479.27 | 2,209.16 | 9.179 | SF |