



API 081 0430  
FORM 9-101

EXHIBIT "A"  
Location & Elevation Plat

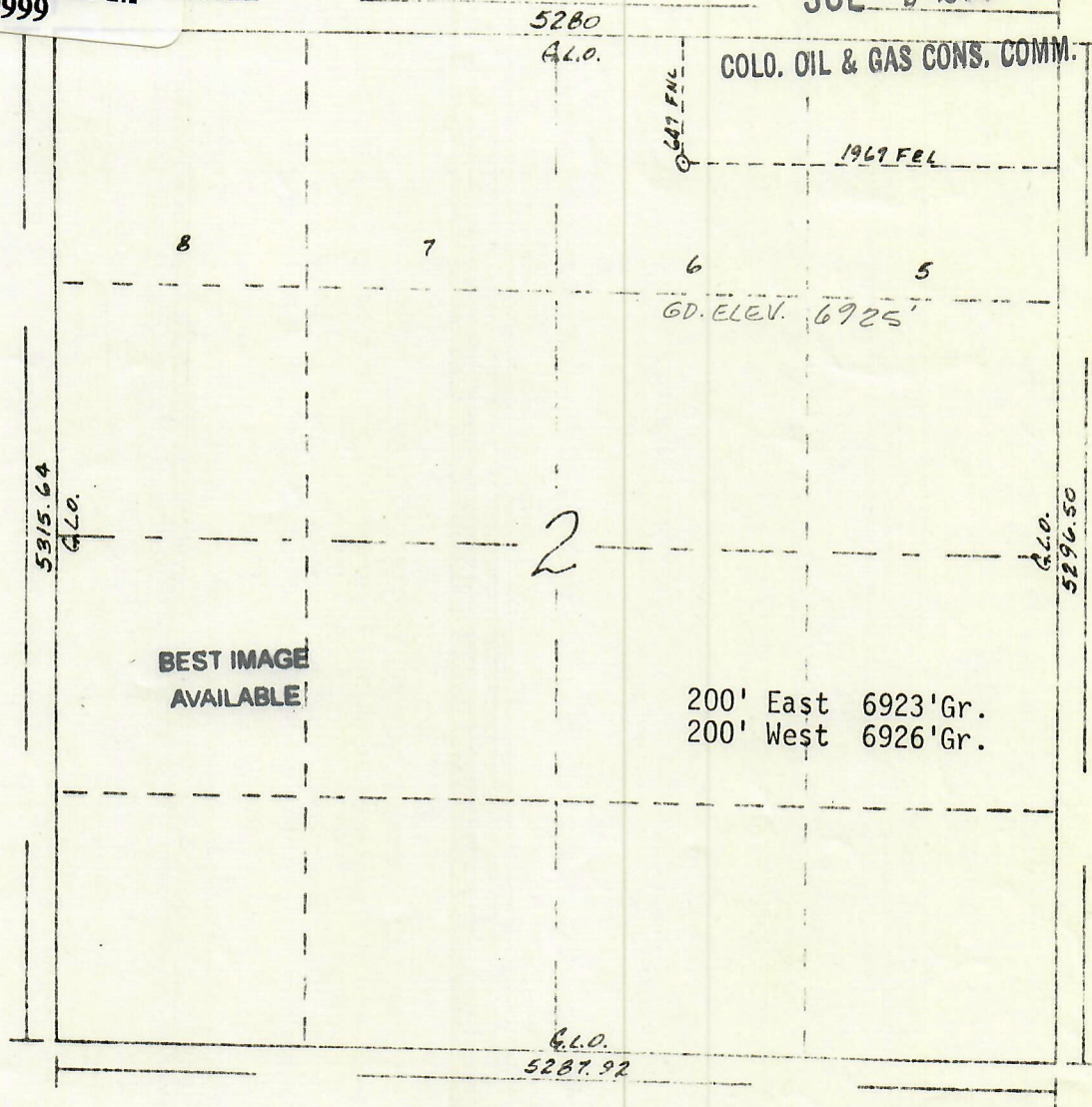


99999999

R. 101 W.

RECEIVED

JUL 9 1980



Scale 1" = 1000'

Powers Elevation Company, Inc. of Denver, Colorado has in accordance with a request from Jim Routson for BEARTOOTH OIL & GAS CO. determined the location of #2-2 FEDERAL to be 647' FNL & 1967' FEL of Section 2 Township 11 N. Range 101 W. of the 6th Principal Meridian Moffat County, Colorado.

I hereby certify that this plat is an accurate representation of a correct survey showing the location of #2-2 FEDERAL

Date: 6-12-80

Jerry D. Becker  
Licensed Land Surveyor No. 7734  
State of Colorado

