



Well Name: **SIMPSON 25-30-2H**

Project Name: **Sec. 26-T8N-R66W**

Pad Name: **Simpson 26**

ANNOTATIONS

MD	Inc	Azi	TVD	+N/-S	+E/-W	VSec	Departure	Annotation
500.00	0.00	0.00	500.00	0.00	0.00	0.00	0.00	Start Build 2.00
1401.74	18.03	355.44	1386.92	140.30	-11.19	13.47	140.75	Hold 18.03 Inc, 355.44 Az
7091.07	18.03	355.44	6796.74	1896.11	-151.28	182.06	1902.13	KOP 8/100
8238.08	90.00	91.13	7499.00	2109.42	568.94	928.46	2697.47	LP 90 Inc, 91.13 Az
18431.05	90.00	91.13	7499.00	1907.75	10759.91	10927.73	12890.44	TD at 18431.05

Geodetic Datum:

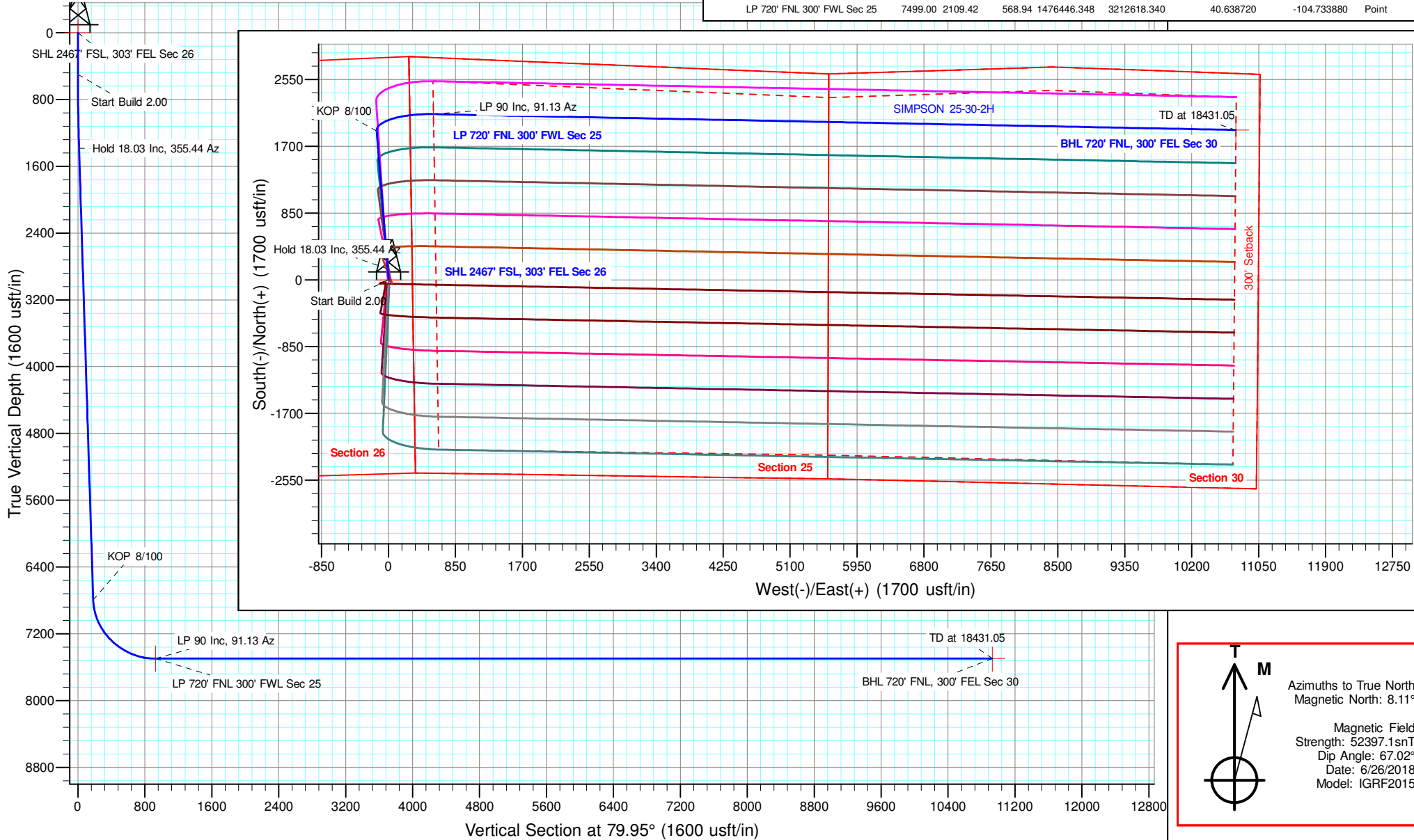
North American Datum 1983
US State Plane 1983 Colorado Northern Zone

Elevation:

Ground Elevation: 5014.00
KB Elevation: WELL @ 5029.00usft (Original Well Elev)

DESIGN TARGET DETAILS

Name	TVD	+N/-S	+E/-W	Northing	Easting	Latitude	Longitude	Shape
SHL 2467' FSL, 303' FEL Sec 26	0.00	0.00	0.00	1474332.104	3212067.601	40.632930	-104.735930	Point
BHL 720' FNL, 300' FEL Sec 30	7499.00	1907.75	10759.91	1476332.493	3222810.676	40.638160	-104.697160	Point
LP 720' FNL 300' FWL Sec 25	7499.00	2109.42	568.94	1476446.348	3212618.340	40.638720	-104.733880	Point



Azimuths to True North
 Magnetic North: 8.11°
 Magnetic Field
 Strength: 52397.1snT
 Dip Angle: 67.02°
 Date: 6/26/2018
 Model: IGRF2015



Edge Energy, LLC

Sec. 26-T8N-R66W

Simpson 26

SIMPSON 25-30-2H

Wellbore #1

Plan: Design #1 26June18 mnh

Standard Planning Report - Geographic

27 June, 2018



Microsoft
Planning Report - Geographic

Database:	EDM 5000.14 Single User Db	Local Co-ordinate Reference:	Well SIMPSON 25-30-2H
Company:	Edge Energy, LLC	TVD Reference:	WELL @ 5029.00usft (Original Well Elev)
Project:	Sec. 26-T8N-R66W	MD Reference:	WELL @ 5029.00usft (Original Well Elev)
Site:	Simpson 26	North Reference:	True
Well:	SIMPSON 25-30-2H	Survey Calculation Method:	Minimum Curvature
Wellbore:	Wellbore #1		
Design:	Design #1 26June18 mnh		

Project	Sec. 26-T8N-R66W		
Map System:	US State Plane 1983	System Datum:	Mean Sea Level
Geo Datum:	North American Datum 1983		
Map Zone:	Colorado Northern Zone		

Site	Simpson 26				
Site Position:		Northing:	1,474,342.946 usft	Latitude:	40.632960
From:	Lat/Long	Easting:	3,212,056.406 usft	Longitude:	-104.735970
Position Uncertainty:	0.00 usft	Slot Radius:	13-3/16 "	Grid Convergence:	0.49 °

Well	SIMPSON 25-30-2H					
Well Position	+N/-S	0.00 usft	Northing:	1,474,332.104 usft	Latitude:	40.632930
	+E/-W	0.00 usft	Easting:	3,212,067.602 usft	Longitude:	-104.735930
Position Uncertainty		0.00 usft	Wellhead Elevation:		Ground Level:	5,014.00 usft

Wellbore	Wellbore #1				
Magnetics	Model Name	Sample Date	Declination	Dip Angle	Field Strength
	IGRF2015	6/26/2018	(°)	(°)	(nT)
			8.11	67.02	52,397.14154733

Design	Design #1 26June18 mnh				
Audit Notes:					
Version:	Phase:	PLAN	Tie On Depth:	0.00	
Vertical Section:	Depth From (TVD)	+N/-S	+E/-W	Direction	
	(usft)	(usft)	(usft)	(°)	
	0.00	0.00	0.00	79.95	

Plan Survey Tool Program	Date	6/27/2018			
Depth From	Depth To	Survey (Wellbore)	Tool Name	Remarks	
(usft)	(usft)				
1	0.00	18,431.05 Design #1 26June18 mnh (Wellb	MWD	OWSG MWD - Standard	

Plan Sections										
Measured	Inclination	Azimuth	Vertical	+N/-S	+E/-W	Dogleg	Build	Turn	TFO	Target
Depth	(°)	(°)	Depth	(usft)	(usft)	Rate	Rate	Rate	(°)	
(usft)			(usft)			(°/100usft)	(°/100usft)	(°/100usft)		
0.00	0.00	0.00	0.00	0.00	0.00	0.00	0.00	0.00	0.00	
500.00	0.00	0.00	500.00	0.00	0.00	0.00	0.00	0.00	0.00	
1,401.74	18.03	355.44	1,386.92	140.30	-11.19	2.00	2.00	0.00	355.44	
7,091.08	18.03	355.44	6,796.74	1,896.11	-151.28	0.00	0.00	0.00	0.00	
8,238.08	90.00	91.13	7,499.00	2,109.42	568.94	8.00	6.27	8.34	95.42	LP 720' FNL 300' FWI
18,431.05	90.00	91.13	7,499.00	1,907.75	10,759.91	0.00	0.00	0.00	0.00	BHL 720' FNL, 300' F



Microsoft
Planning Report - Geographic

Database:	EDM 5000.14 Single User Db	Local Co-ordinate Reference:	Well SIMPSON 25-30-2H
Company:	Edge Energy, LLC	TVD Reference:	WELL @ 5029.00usft (Original Well Elev)
Project:	Sec. 26-T8N-R66W	MD Reference:	WELL @ 5029.00usft (Original Well Elev)
Site:	Simpson 26	North Reference:	True
Well:	SIMPSON 25-30-2H	Survey Calculation Method:	Minimum Curvature
Wellbore:	Wellbore #1		
Design:	Design #1 26June18 mnh		

Planned Survey										
Measured Depth (usft)	Inclination (°)	Azimuth (°)	Vertical Depth (usft)	+N/-S (usft)	+E/-W (usft)	Map Northing (usft)	Map Easting (usft)	Latitude	Longitude	
0.00	0.00	0.00	0.00	0.00	0.00	1,474,332.104	3,212,067.602	40.632930	-104.735930	
200.00	0.00	0.00	200.00	0.00	0.00	1,474,332.104	3,212,067.602	40.632930	-104.735930	
400.00	0.00	0.00	400.00	0.00	0.00	1,474,332.104	3,212,067.602	40.632930	-104.735930	
500.00	0.00	0.00	500.00	0.00	0.00	1,474,332.104	3,212,067.602	40.632930	-104.735930	
Start Build 2.00										
600.00	2.00	355.44	599.98	1.74	-0.14	1,474,333.842	3,212,067.448	40.632935	-104.735931	
800.00	6.00	355.44	799.45	15.64	-1.25	1,474,347.737	3,212,066.219	40.632973	-104.735935	
1,000.00	10.00	355.44	997.47	43.38	-3.46	1,474,375.457	3,212,063.767	40.633049	-104.735943	
1,200.00	14.00	355.44	1,193.06	84.83	-6.77	1,474,416.870	3,212,060.103	40.633163	-104.735955	
1,400.00	18.00	355.44	1,385.27	139.77	-11.15	1,474,471.771	3,212,055.246	40.633314	-104.735970	
1,401.74	18.03	355.44	1,386.92	140.30	-11.19	1,474,472.307	3,212,055.199	40.633315	-104.735971	
Hold 18.03 Inc, 355.44 Az										
1,600.00	18.03	355.44	1,575.44	201.49	-16.08	1,474,533.449	3,212,049.790	40.633483	-104.735988	
1,800.00	18.03	355.44	1,765.62	263.21	-21.00	1,474,595.127	3,212,044.334	40.633653	-104.736006	
2,000.00	18.03	355.44	1,955.79	324.94	-25.93	1,474,656.804	3,212,038.877	40.633822	-104.736024	
2,200.00	18.03	355.44	2,145.96	386.66	-30.85	1,474,718.482	3,212,033.421	40.633991	-104.736041	
2,400.00	18.03	355.44	2,336.14	448.38	-35.77	1,474,780.160	3,212,027.965	40.634161	-104.736059	
2,600.00	18.03	355.44	2,526.31	510.10	-40.70	1,474,841.838	3,212,022.509	40.634330	-104.736077	
2,800.00	18.03	355.44	2,716.49	571.83	-45.62	1,474,903.516	3,212,017.052	40.634500	-104.736095	
3,000.00	18.03	355.44	2,906.66	633.55	-50.55	1,474,965.194	3,212,011.596	40.634669	-104.736112	
3,200.00	18.03	355.44	3,096.83	695.27	-55.47	1,475,026.871	3,212,006.140	40.634838	-104.736130	
3,400.00	18.03	355.44	3,287.01	756.99	-60.40	1,475,088.549	3,212,000.683	40.635008	-104.736148	
3,600.00	18.03	355.44	3,477.18	818.72	-65.32	1,475,150.227	3,211,995.227	40.635177	-104.736166	
3,800.00	18.03	355.44	3,667.35	880.44	-70.25	1,475,211.905	3,211,989.771	40.635347	-104.736183	
4,000.00	18.03	355.44	3,857.53	942.16	-75.17	1,475,273.583	3,211,984.314	40.635516	-104.736201	
4,200.00	18.03	355.44	4,047.70	1,003.88	-80.10	1,475,335.261	3,211,978.858	40.635686	-104.736219	
4,400.00	18.03	355.44	4,237.88	1,065.61	-85.02	1,475,396.938	3,211,973.402	40.635855	-104.736237	
4,600.00	18.03	355.44	4,428.05	1,127.33	-89.95	1,475,458.616	3,211,967.945	40.636024	-104.736254	
4,800.00	18.03	355.44	4,618.22	1,189.05	-94.87	1,475,520.294	3,211,962.489	40.636194	-104.736272	
5,000.00	18.03	355.44	4,808.40	1,250.77	-99.80	1,475,581.972	3,211,957.033	40.636363	-104.736290	
5,200.00	18.03	355.44	4,998.57	1,312.50	-104.72	1,475,643.650	3,211,951.577	40.636533	-104.736308	
5,400.00	18.03	355.44	5,188.74	1,374.22	-109.64	1,475,705.328	3,211,946.120	40.636702	-104.736325	
5,600.00	18.03	355.44	5,378.92	1,435.94	-114.57	1,475,767.005	3,211,940.664	40.636872	-104.736343	
5,800.00	18.03	355.44	5,569.09	1,497.66	-119.49	1,475,828.683	3,211,935.208	40.637041	-104.736361	
6,000.00	18.03	355.44	5,759.27	1,559.39	-124.42	1,475,890.361	3,211,929.751	40.637210	-104.736379	
6,200.00	18.03	355.44	5,949.44	1,621.11	-129.34	1,475,952.039	3,211,924.295	40.637380	-104.736396	
6,400.00	18.03	355.44	6,139.61	1,682.83	-134.27	1,476,013.717	3,211,918.839	40.637549	-104.736414	
6,600.00	18.03	355.44	6,329.79	1,744.55	-139.19	1,476,075.395	3,211,913.382	40.637719	-104.736432	
6,800.00	18.03	355.44	6,519.96	1,806.28	-144.12	1,476,137.072	3,211,907.926	40.637888	-104.736450	
7,000.00	18.03	355.44	6,710.14	1,868.00	-149.04	1,476,198.750	3,211,902.470	40.638057	-104.736467	
7,091.08	18.03	355.44	6,796.74	1,896.11	-151.28	1,476,226.837	3,211,899.985	40.638135	-104.736475	
KOP 8/100										
7,200.00	19.21	22.72	6,900.15	1,929.51	-145.69	1,476,260.285	3,211,905.289	40.638226	-104.736455	
7,400.00	28.84	55.09	7,083.38	1,987.84	-93.09	1,476,319.068	3,211,957.387	40.638386	-104.736266	
7,600.00	42.29	70.26	7,246.01	2,038.49	10.47	1,476,370.611	3,212,060.504	40.638525	-104.735893	
7,800.00	56.89	78.93	7,375.46	2,077.54	156.95	1,476,410.921	3,212,206.648	40.638633	-104.735365	
8,000.00	71.91	85.06	7,461.70	2,101.96	335.02	1,476,436.875	3,212,384.498	40.638700	-104.734723	
8,200.00	87.10	90.19	7,498.04	2,109.86	530.87	1,476,446.461	3,212,580.275	40.638721	-104.734017	
8,238.08	90.00	91.13	7,499.00	2,109.42	568.94	1,476,446.348	3,212,618.341	40.638720	-104.733880	
LP 90 Inc, 91.13 Az										
8,400.00	90.00	91.13	7,499.00	2,106.22	730.82	1,476,444.540	3,212,780.248	40.638711	-104.733297	
8,600.00	90.00	91.13	7,499.00	2,102.26	930.78	1,476,442.306	3,212,980.235	40.638700	-104.732576	
8,800.00	90.00	91.13	7,499.00	2,098.30	1,130.74	1,476,440.072	3,213,180.223	40.638690	-104.731856	
9,000.00	90.00	91.13	7,499.00	2,094.35	1,330.70	1,476,437.838	3,213,380.210	40.638679	-104.731135	



Microsoft
Planning Report - Geographic

Database:	EDM 5000.14 Single User Db	Local Co-ordinate Reference:	Well SIMPSON 25-30-2H
Company:	Edge Energy, LLC	TVD Reference:	WELL @ 5029.00usft (Original Well Elev)
Project:	Sec. 26-T8N-R66W	MD Reference:	WELL @ 5029.00usft (Original Well Elev)
Site:	Simpson 26	North Reference:	True
Well:	SIMPSON 25-30-2H	Survey Calculation Method:	Minimum Curvature
Wellbore:	Wellbore #1		
Design:	Design #1 26June18 mnh		

Planned Survey										
Measured Depth (usft)	Inclination (°)	Azimuth (°)	Vertical Depth (usft)	+N/-S (usft)	+E/-W (usft)	Map Northing (usft)	Map Easting (usft)	Latitude	Longitude	
9,200.00	90.00	91.13	7,499.00	2,090.39	1,530.66	1,476,435.604	3,213,580.198	40.638668	-104.730415	
9,400.00	90.00	91.13	7,499.00	2,086.43	1,730.63	1,476,433.370	3,213,780.185	40.638657	-104.729694	
9,600.00	90.00	91.13	7,499.00	2,082.47	1,930.59	1,476,431.136	3,213,980.173	40.638646	-104.728974	
9,800.00	90.00	91.13	7,499.00	2,078.52	2,130.55	1,476,428.902	3,214,180.160	40.638635	-104.728253	
10,000.00	90.00	91.13	7,499.00	2,074.56	2,330.51	1,476,426.668	3,214,380.148	40.638624	-104.727533	
10,200.00	90.00	91.13	7,499.00	2,070.60	2,530.47	1,476,424.434	3,214,580.135	40.638613	-104.726812	
10,400.00	90.00	91.13	7,499.00	2,066.65	2,730.43	1,476,422.200	3,214,780.123	40.638602	-104.726092	
10,600.00	90.00	91.13	7,499.00	2,062.69	2,930.39	1,476,419.966	3,214,980.110	40.638591	-104.725371	
10,800.00	90.00	91.13	7,499.00	2,058.73	3,130.35	1,476,417.732	3,215,180.098	40.638580	-104.724651	
11,000.00	90.00	91.13	7,499.00	2,054.77	3,330.31	1,476,415.498	3,215,380.085	40.638569	-104.723930	
11,200.00	90.00	91.13	7,499.00	2,050.82	3,530.27	1,476,413.264	3,215,580.073	40.638559	-104.723210	
11,400.00	90.00	91.13	7,499.00	2,046.86	3,730.23	1,476,411.030	3,215,780.060	40.638548	-104.722489	
11,600.00	90.00	91.13	7,499.00	2,042.90	3,930.19	1,476,408.796	3,215,980.048	40.638537	-104.721769	
11,800.00	90.00	91.13	7,499.00	2,038.95	4,130.16	1,476,406.562	3,216,180.036	40.638526	-104.721048	
12,000.00	90.00	91.13	7,499.00	2,034.99	4,330.12	1,476,404.328	3,216,380.023	40.638515	-104.720328	
12,200.00	90.00	91.13	7,499.00	2,031.03	4,530.08	1,476,402.094	3,216,580.011	40.638504	-104.719607	
12,400.00	90.00	91.13	7,499.00	2,027.07	4,730.04	1,476,399.859	3,216,779.998	40.638493	-104.718887	
12,600.00	90.00	91.13	7,499.00	2,023.12	4,930.00	1,476,397.625	3,216,979.986	40.638482	-104.718166	
12,800.00	90.00	91.13	7,499.00	2,019.16	5,129.96	1,476,395.391	3,217,179.973	40.638471	-104.717446	
13,000.00	90.00	91.13	7,499.00	2,015.20	5,329.92	1,476,393.157	3,217,379.961	40.638460	-104.716725	
13,200.00	90.00	91.13	7,499.00	2,011.25	5,529.88	1,476,390.923	3,217,579.948	40.638449	-104.716005	
13,400.00	90.00	91.13	7,499.00	2,007.29	5,729.84	1,476,388.689	3,217,779.936	40.638438	-104.715284	
13,600.00	90.00	91.13	7,499.00	2,003.33	5,929.80	1,476,386.455	3,217,979.923	40.638427	-104.714564	
13,800.00	90.00	91.13	7,499.00	1,999.38	6,129.76	1,476,384.221	3,218,179.911	40.638416	-104.713843	
14,000.00	90.00	91.13	7,499.00	1,995.42	6,329.73	1,476,381.987	3,218,379.898	40.638405	-104.713123	
14,200.00	90.00	91.13	7,499.00	1,991.46	6,529.69	1,476,379.753	3,218,579.886	40.638394	-104.712402	
14,400.00	90.00	91.13	7,499.00	1,987.50	6,729.65	1,476,377.519	3,218,779.873	40.638383	-104.711682	
14,600.00	90.00	91.13	7,499.00	1,983.55	6,929.61	1,476,375.285	3,218,979.861	40.638372	-104.710961	
14,800.00	90.00	91.13	7,499.00	1,979.59	7,129.57	1,476,373.051	3,219,179.848	40.638361	-104.710241	
15,000.00	90.00	91.13	7,499.00	1,975.63	7,329.53	1,476,370.817	3,219,379.836	40.638350	-104.709521	
15,200.00	90.00	91.13	7,499.00	1,971.68	7,529.49	1,476,368.583	3,219,579.823	40.638339	-104.708800	
15,400.00	90.00	91.13	7,499.00	1,967.72	7,729.45	1,476,366.349	3,219,779.811	40.638328	-104.708080	
15,600.00	90.00	91.13	7,499.00	1,963.76	7,929.41	1,476,364.115	3,219,979.798	40.638317	-104.707359	
15,800.00	90.00	91.13	7,499.00	1,959.80	8,129.37	1,476,361.881	3,220,179.786	40.638306	-104.706639	
16,000.00	90.00	91.13	7,499.00	1,955.85	8,329.33	1,476,359.647	3,220,379.773	40.638295	-104.705918	
16,200.00	90.00	91.13	7,499.00	1,951.89	8,529.29	1,476,357.413	3,220,579.761	40.638284	-104.705198	
16,400.00	90.00	91.13	7,499.00	1,947.93	8,729.26	1,476,355.179	3,220,779.748	40.638273	-104.704477	
16,600.00	90.00	91.13	7,499.00	1,943.98	8,929.22	1,476,352.945	3,220,979.736	40.638262	-104.703757	
16,800.00	90.00	91.13	7,499.00	1,940.02	9,129.18	1,476,350.711	3,221,179.723	40.638250	-104.703036	
17,000.00	90.00	91.13	7,499.00	1,936.06	9,329.14	1,476,348.477	3,221,379.711	40.638239	-104.702316	
17,200.00	90.00	91.13	7,499.00	1,932.10	9,529.10	1,476,346.243	3,221,579.698	40.638228	-104.701595	
17,400.00	90.00	91.13	7,499.00	1,928.15	9,729.06	1,476,344.009	3,221,779.686	40.638217	-104.700875	
17,600.00	90.00	91.13	7,499.00	1,924.19	9,929.02	1,476,341.775	3,221,979.673	40.638206	-104.700154	
17,800.00	90.00	91.13	7,499.00	1,920.23	10,128.98	1,476,339.541	3,222,179.661	40.638195	-104.699434	
18,000.00	90.00	91.13	7,499.00	1,916.28	10,328.94	1,476,337.307	3,222,379.648	40.638184	-104.698713	
18,200.00	90.00	91.13	7,499.00	1,912.32	10,528.90	1,476,335.073	3,222,579.636	40.638173	-104.697993	
18,400.00	90.00	91.13	7,499.00	1,908.36	10,728.86	1,476,332.839	3,222,779.623	40.638162	-104.697272	
18,431.05	90.00	91.13	7,499.00	1,907.75	10,759.91	1,476,332.492	3,222,810.676	40.638160	-104.697160	

TD at 18431.05



Database:	EDM 5000.14 Single User Db	Local Co-ordinate Reference:	Well SIMPSON 25-30-2H
Company:	Edge Energy, LLC	TVD Reference:	WELL @ 5029.00usft (Original Well Elev)
Project:	Sec. 26-T8N-R66W	MD Reference:	WELL @ 5029.00usft (Original Well Elev)
Site:	Simpson 26	North Reference:	True
Well:	SIMPSON 25-30-2H	Survey Calculation Method:	Minimum Curvature
Wellbore:	Wellbore #1		
Design:	Design #1 26June18 mnh		

Design Targets										
Target Name	Dip Angle	Dip Dir.	TVD	+N/-S	+E/-W	Northing	Easting	Latitude	Longitude	
- hit/miss target	(°)	(°)	(usft)	(usft)	(usft)	(usft)	(usft)			
- Shape										
SHL 2467' FSL, 303' FEI - plan hits target center - Point	0.00	0.00	0.00	0.00	0.00	1,474,332.104	3,212,067.602	40.632930	-104.735930	
LP 720' FNL 300' FWL S - plan hits target center - Point	0.00	0.00	7,499.00	2,109.42	568.94	1,476,446.348	3,212,618.341	40.638720	-104.733880	
BHL 720' FNL, 300' FEL - plan hits target center - Point	0.00	0.00	7,499.00	1,907.75	10,759.91	1,476,332.492	3,222,810.676	40.638160	-104.697160	

Plan Annotations					
Measured Depth	Vertical Depth	Local Coordinates		Comment	
(usft)	(usft)	+N/-S	+E/-W		
		(usft)	(usft)		
500.00	500.00	0.00	0.00	Start Build 2.00	
1,401.74	1,386.92	140.30	-11.19	Hold 18.03 Inc, 355.44 Az	
7,091.08	6,796.74	1,896.11	-151.28	KOP 8/100	
8,238.08	7,499.00	2,109.42	568.94	LP 90 Inc, 91.13 Az	
18,431.05	7,499.00	1,907.75	10,759.91	TD at 18431.05	