

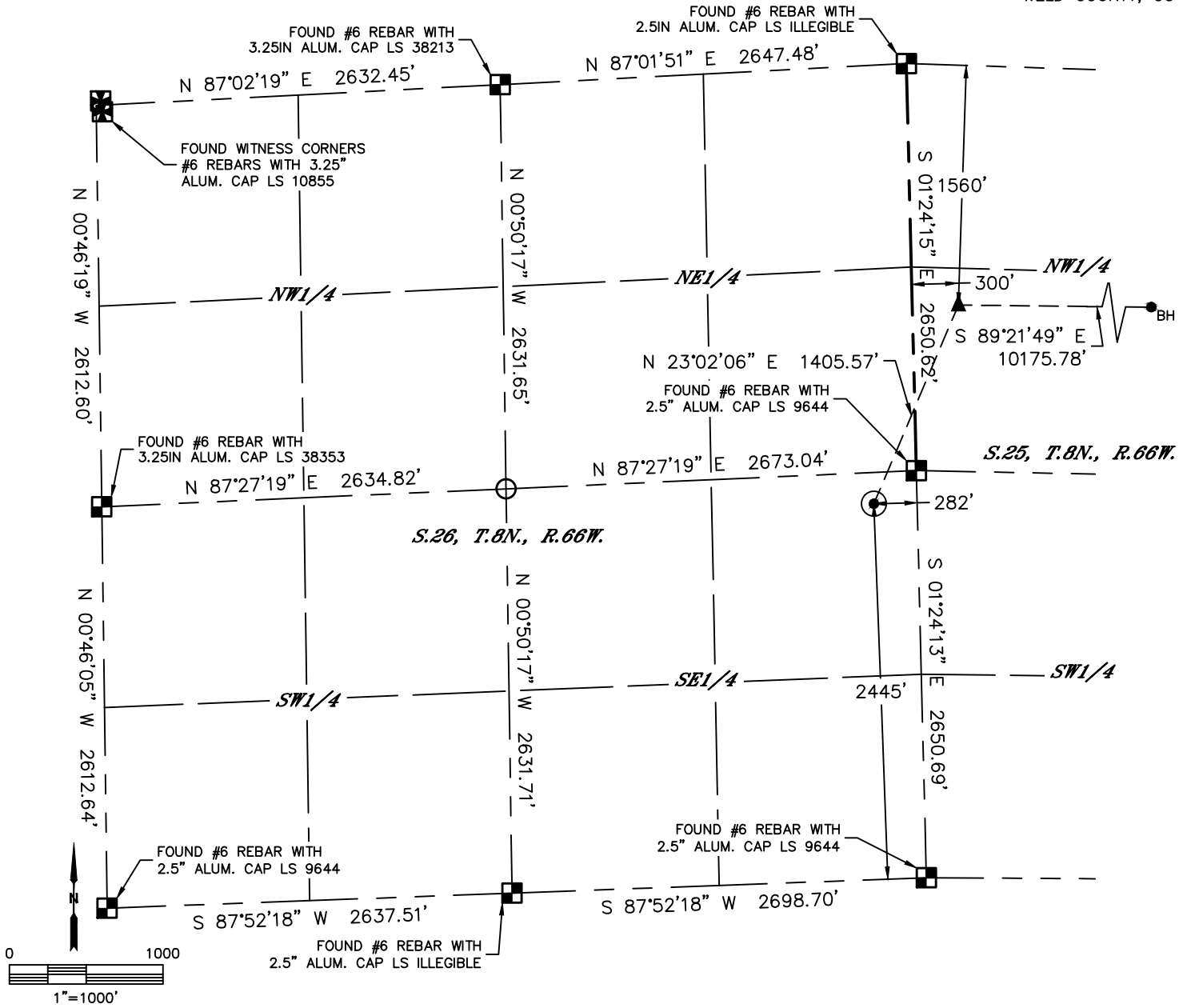


Lat40°, Inc. 6250 W. 10th Street, Unit 2, Greeley, CO 970-515-5294

# WELL LOCATION CERTIFICATE

## SIMPSON 25-30-4H

SECTION: 26  
TOWNSHIP: 8N  
RANGE: 66W  
6TH. P.M.  
WELD COUNTY, CO



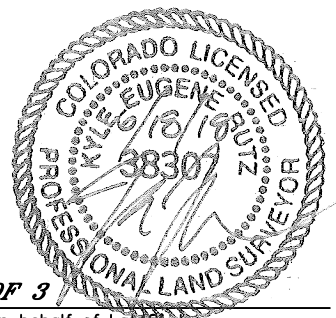
CLIENT: EDGE ENERGY				LANDMAN: ERIK LARSEN					
INSTRUMENT OPERATOR: DUNCAN HOTCHKISS				SURVEY DATE: 6/4/2018		SURFACE USE: CROP LAND			
SHL FOOTAGE		SHL LAT°	SHL LONG°	SHL PDOP	SHL ELEV (FT.)	SHL 1/4/1/4	SHL S-T-R		
2445	FSL	282	FEL	40.63287	-104.73585	2.3	5013	NESE	26-8-66

BHL FOOTAGE		BHL LAT°	BHL LONG°	BHL S-T-R	EP LAT°	EP LONG°	EP S-T-R		
1560	FNL	300	FEL	40.63585	-104.69718	30-8-65	40.63641	-104.73383	25-8-66

- LEGEND**
- = ALIQUOT MONUMENT AS DESCRIBED
  - = CALCULATED POSITION
  - = SURFACE HOLE LOCATION (SHL)
  - = ENTRY POINT LOCATION (EP)
  - = BOTTOM HOLE LOCATION (BHL)
  - = EXISTING WELL
  - = ABANDONED WELL

**NOTE:**

- Bearings shown are Grid Bearings of the Colorado State Plane Coordinate System, North Zone, North American Datum 1983. The lineal dimensions as contained herein are based upon the "U.S. Survey Foot."
- Distances to section lines measured at 90 degrees from said section lines.
- Ground elevations are based on an observed GPS elevation (NAVD 1988 DATUM).
- Latitude and Longitude shown are (NAD 83 DATUM).
- IMPROVEMENTS: See LOCATION DRAWING for all visible improvements within 500' of oil and gas location.
- This map does not represent a boundary survey.



**SHEET 1 OF 3**  
 Kyle E. Rutz—On behalf of Lat40°, Inc.  
 Colorado Licensed Professional Land Surveyor No. 38307  
 DATE: 6/18/2018  
 PROJECT#: 201095

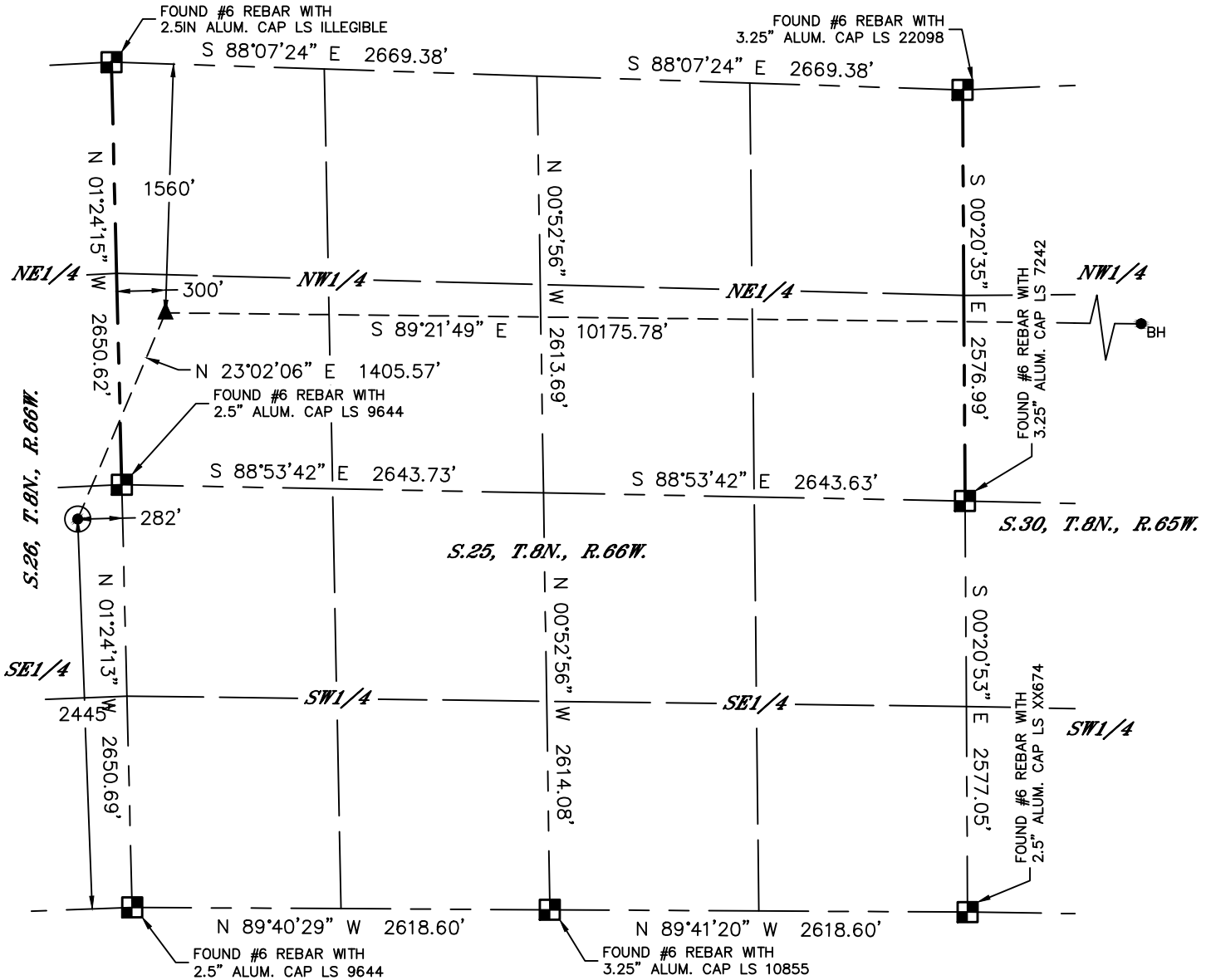


Lat40°, Inc. 6250 W. 10th Street, Unit 2, Greeley, CO 970-515-5294

# WELL LOCATION CERTIFICATE

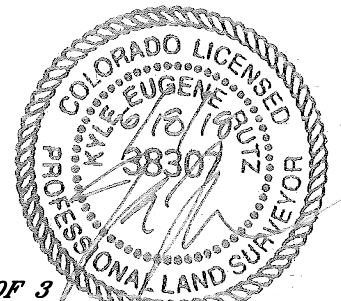
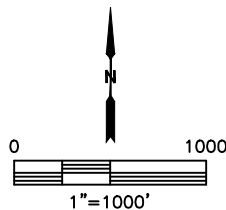
SIMPSON 25-30-4H

SECTION: 26  
TOWNSHIP: 8N  
RANGE: 66W  
6TH. P.M.  
WELD COUNTY, CO



### LEGEND

- = ALIQUOT MONUMENT AS DESCRIBED
- = CALCULATED POSITION
- = SURFACE HOLE LOCATION (SHL)
- = ENTRY POINT LOCATION (EP)
- = BOTTOM HOLE LOCATION (BHL)
- = EXISTING WELL
- = ABANDONED WELL



**SHEET 2 OF 3**

Kyle E. Rutz—On behalf of Lat40°, Inc.  
Colorado Licensed Professional Land Surveyor No. 38307  
DATE: 6/18/2018  
PROJECT#: 201095

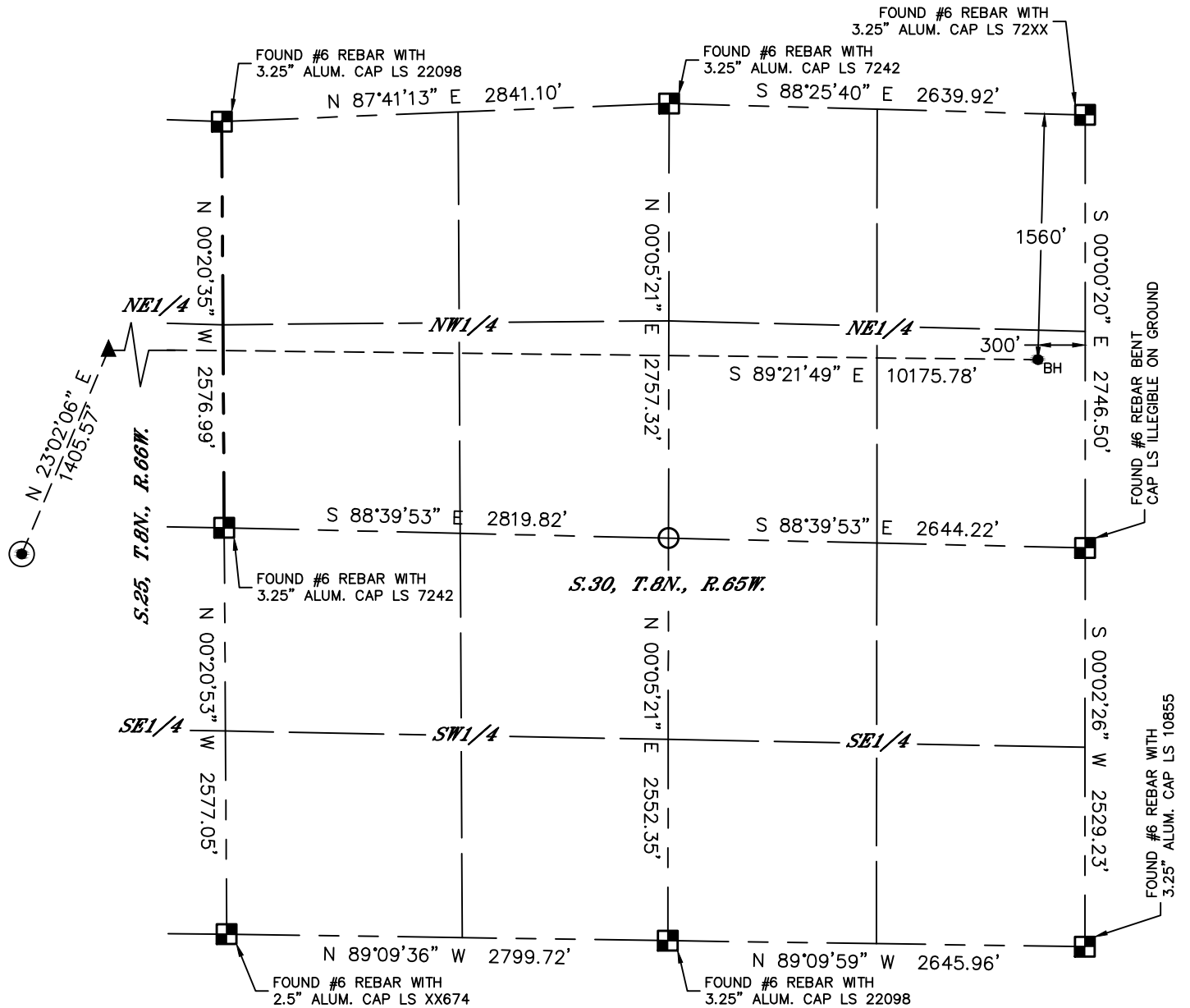


Lat40°, Inc. 6250 W. 10th Street, Unit 2, Greeley, CO 970-515-5294

# WELL LOCATION CERTIFICATE

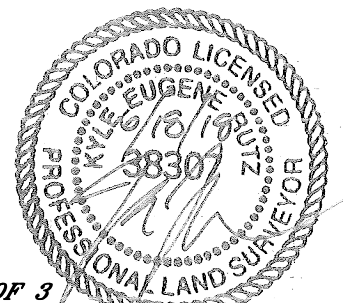
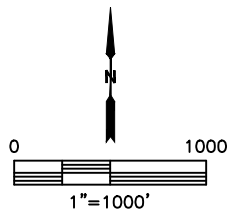
**SIMPSON 25-30-4H**

SECTION: 26  
TOWNSHIP: 8N  
RANGE: 66W  
6TH. P.M.  
WELD COUNTY, CO



### LEGEND

- = ALIQUOT MONUMENT AS DESCRIBED
- = CALCULATED POSITION
- = SURFACE HOLE LOCATION (SHL)
- = ENTRY POINT LOCATION (EP)
- = BOTTOM HOLE LOCATION (BHL)
- = EXISTING WELL
- = ABANDONED WELL



**SHEET 3 OF 3**

Kyle E. Rutz—On behalf of Lat40°, Inc.  
Colorado Licensed Professional Land Surveyor No. 38307  
DATE: 6/18/2018  
PROJECT#: 201095