



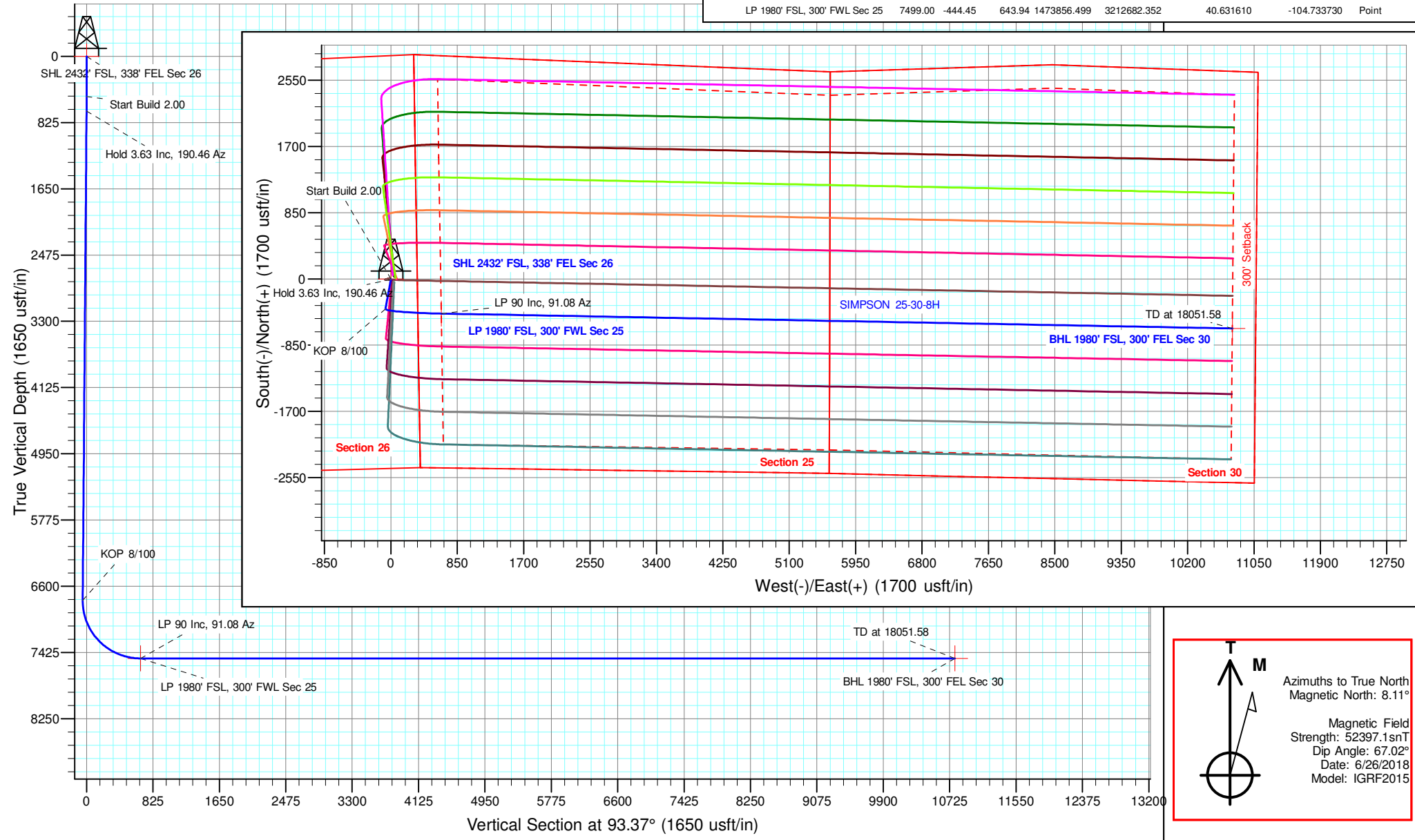
Well Name: SIMPSON 25-30-8H	Project Name: Sec. 26-T8N-R66W	Pad Name: Simpson 26
--	---	---------------------------------------

ANNOTATIONS									
MD	Inc	Azi	TVD	+N/-S	+E/-W	VSec	Departure	Annotation	
500.00	0.00	0.00	500.00	0.00	0.00	0.00	0.00	Start Build 2.00	
681.44	3.63	190.46	681.32	-5.65	-1.04	-0.71	5.74	Hold 3.63 Inc, 190.46 Az	
6789.19	3.63	190.46	6776.82	-385.79	-71.24	-48.41	392.31	KOP 8/100	
7921.58	90.00	91.08	7499.00	-444.45	643.94	668.98	1114.36	LP 90 Inc, 91.08 Az	
18051.58	90.00	91.08	7499.00	-635.19	10772.14	10790.85	11244.36	TD at 18051.58	

Geodetic Datum:
North American Datum 1983
US State Plane 1983 Colorado Northern Zone

Elevation:
Ground Elevation: 5014.00
KB Elevation: WELL @ 5029.00usft (Original Well Elev)

DESIGN TARGET DETAILS									
Name	TVD	+N/-S	+E/-W	Northing	Easting	Latitude	Longitude	Shape	
SHL 2432' FSL, 338' FEL Sec 26	0.00	0.00	0.00	1474295.387	3212034.610	40.632830	-104.736050	Point	
BHL 1980' FSL, 300' FEL Sec 30	7499.00	-635.19	10772.14	1473753.021	3222811.825	40.631080	-104.697240	Point	
LP 1980' FSL, 300' FWL Sec 25	7499.00	-444.45	643.94	1473856.499	3212682.352	40.631610	-104.733730	Point	



Azimuths to True North
 Magnetic North: 8.11°
 Magnetic Field
 Strength: 52397.1snT
 Dip Angle: 67.02°
 Date: 6/26/2018
 Model: IGRF2015



Edge Energy, LLC

Sec. 26-T8N-R66W

Simpson 26

SIMPSON 25-30-8H

Wellbore #1

Plan: Design #1 26June18 mnh

Standard Planning Report - Geographic

27 June, 2018



Database:	EDM 5000.14 Single User Db	Local Co-ordinate Reference:	Well SIMPSON 25-30-8H
Company:	Edge Energy, LLC	TVD Reference:	WELL @ 5029.00usft (Original Well Elev)
Project:	Sec. 26-T8N-R66W	MD Reference:	WELL @ 5029.00usft (Original Well Elev)
Site:	Simpson 26	North Reference:	True
Well:	SIMPSON 25-30-8H	Survey Calculation Method:	Minimum Curvature
Wellbore:	Wellbore #1		
Design:	Design #1 26June18 mnh		

Project	Sec. 26-T8N-R66W		
Map System:	US State Plane 1983	System Datum:	Mean Sea Level
Geo Datum:	North American Datum 1983		
Map Zone:	Colorado Northern Zone		

Site	Simpson 26				
Site Position:		Northing:	1,474,342.946 usft	Latitude:	40.632960
From:	Lat/Long	Easting:	3,212,056.406 usft	Longitude:	-104.735970
Position Uncertainty:	0.00 usft	Slot Radius:	13-3/16 "	Grid Convergence:	0.49 °

Well	SIMPSON 25-30-8H					
Well Position	+N/-S	0.00 usft	Northing:	1,474,295.387 usft	Latitude:	40.632830
	+E/-W	0.00 usft	Easting:	3,212,034.611 usft	Longitude:	-104.736050
Position Uncertainty		0.00 usft	Wellhead Elevation:		Ground Level:	5,014.00 usft

Wellbore	Wellbore #1				
Magnetics	Model Name	Sample Date	Declination (°)	Dip Angle (°)	Field Strength (nT)
	IGRF2015	6/26/2018	8.11	67.02	52,397.07762154

Design	Design #1 26June18 mnh			
Audit Notes:				
Version:	Phase:	PLAN	Tie On Depth:	0.00
Vertical Section:	Depth From (TVD) (usft)	+N/-S (usft)	+E/-W (usft)	Direction (°)
	0.00	0.00	0.00	93.37

Plan Survey Tool Program	Date	6/27/2018		
Depth From (usft)	Depth To (usft)	Survey (Wellbore)	Tool Name	Remarks
1	0.00	18,051.49 Design #1 26June18 mnh (Wellb	MWD	
			OWSG MWD - Standard	

Plan Sections										
Measured Depth (usft)	Inclination (°)	Azimuth (°)	Vertical Depth (usft)	+N/-S (usft)	+E/-W (usft)	Dogleg Rate (°/100usft)	Build Rate (°/100usft)	Turn Rate (°/100usft)	TFO (°)	Target
0.00	0.00	0.00	0.00	0.00	0.00	0.00	0.00	0.00	0.00	
500.00	0.00	0.00	500.00	0.00	0.00	0.00	0.00	0.00	0.00	
681.44	3.63	190.46	681.32	-5.65	-1.04	2.00	2.00	0.00	190.46	
6,789.19	3.63	190.46	6,776.82	-385.79	-71.24	0.00	0.00	0.00	0.00	
7,921.58	90.00	91.08	7,499.00	-444.45	643.94	8.00	7.63	-8.78	-99.37	LP 1980' FSL, 300' FI
18,051.58	90.00	91.08	7,499.00	-635.19	10,772.14	0.00	0.00	0.00	0.00	BHL 1980' FSL, 300' I



Microsoft
Planning Report - Geographic

Database:	EDM 5000.14 Single User Db	Local Co-ordinate Reference:	Well SIMPSON 25-30-8H
Company:	Edge Energy, LLC	TVD Reference:	WELL @ 5029.00usft (Original Well Elev)
Project:	Sec. 26-T8N-R66W	MD Reference:	WELL @ 5029.00usft (Original Well Elev)
Site:	Simpson 26	North Reference:	True
Well:	SIMPSON 25-30-8H	Survey Calculation Method:	Minimum Curvature
Wellbore:	Wellbore #1		
Design:	Design #1 26June18 mnh		

Planned Survey										
Measured Depth (usft)	Inclination (°)	Azimuth (°)	Vertical Depth (usft)	+N/-S (usft)	+E/-W (usft)	Map Northing (usft)	Map Easting (usft)	Latitude	Longitude	
0.00	0.00	0.00	0.00	0.00	0.00	1,474,295.387	3,212,034.611	40.632830	-104.736050	
200.00	0.00	0.00	200.00	0.00	0.00	1,474,295.387	3,212,034.611	40.632830	-104.736050	
400.00	0.00	0.00	400.00	0.00	0.00	1,474,295.387	3,212,034.611	40.632830	-104.736050	
500.00	0.00	0.00	500.00	0.00	0.00	1,474,295.387	3,212,034.611	40.632830	-104.736050	
Start Build 2.00										
600.00	2.00	190.46	599.98	-1.72	-0.32	1,474,293.668	3,212,034.308	40.632825	-104.736051	
681.44	3.63	190.46	681.32	-5.65	-1.04	1,474,289.730	3,212,033.616	40.632815	-104.736054	
Hold 3.63 Inc, 190.46 Az										
800.00	3.63	190.46	799.64	-13.03	-2.41	1,474,282.339	3,212,032.317	40.632794	-104.736059	
1,000.00	3.63	190.46	999.24	-25.48	-4.70	1,474,269.872	3,212,030.126	40.632760	-104.736067	
1,200.00	3.63	190.46	1,198.84	-37.92	-7.00	1,474,257.405	3,212,027.934	40.632726	-104.736075	
1,400.00	3.63	190.46	1,398.44	-50.37	-9.30	1,474,244.938	3,212,025.743	40.632692	-104.736084	
1,600.00	3.63	190.46	1,598.04	-62.82	-11.60	1,474,232.470	3,212,023.551	40.632658	-104.736092	
1,800.00	3.63	190.46	1,797.64	-75.27	-13.90	1,474,220.003	3,212,021.360	40.632623	-104.736100	
2,000.00	3.63	190.46	1,997.24	-87.71	-16.20	1,474,207.536	3,212,019.168	40.632589	-104.736109	
2,200.00	3.63	190.46	2,196.83	-100.16	-18.50	1,474,195.069	3,212,016.977	40.632555	-104.736117	
2,400.00	3.63	190.46	2,396.43	-112.61	-20.80	1,474,182.602	3,212,014.786	40.632521	-104.736125	
2,600.00	3.63	190.46	2,596.03	-125.06	-23.09	1,474,170.135	3,212,012.594	40.632487	-104.736133	
2,800.00	3.63	190.46	2,795.63	-137.51	-25.39	1,474,157.668	3,212,010.403	40.632453	-104.736142	
3,000.00	3.63	190.46	2,995.23	-149.95	-27.69	1,474,145.200	3,212,008.211	40.632418	-104.736150	
3,200.00	3.63	190.46	3,194.83	-162.40	-29.99	1,474,132.733	3,212,006.020	40.632384	-104.736158	
3,400.00	3.63	190.46	3,394.43	-174.85	-32.29	1,474,120.266	3,212,003.828	40.632350	-104.736167	
3,600.00	3.63	190.46	3,594.03	-187.30	-34.59	1,474,107.799	3,212,001.637	40.632316	-104.736175	
3,800.00	3.63	190.46	3,793.63	-199.74	-36.89	1,474,095.332	3,211,999.445	40.632282	-104.736183	
4,000.00	3.63	190.46	3,993.23	-212.19	-39.19	1,474,082.865	3,211,997.254	40.632248	-104.736191	
4,200.00	3.63	190.46	4,192.82	-224.64	-41.48	1,474,070.397	3,211,995.063	40.632213	-104.736200	
4,400.00	3.63	190.46	4,392.42	-237.09	-43.78	1,474,057.930	3,211,992.871	40.632179	-104.736208	
4,600.00	3.63	190.46	4,592.02	-249.54	-46.08	1,474,045.463	3,211,990.680	40.632145	-104.736216	
4,800.00	3.63	190.46	4,791.62	-261.98	-48.38	1,474,032.996	3,211,988.488	40.632111	-104.736225	
5,000.00	3.63	190.46	4,991.22	-274.43	-50.68	1,474,020.529	3,211,986.297	40.632077	-104.736233	
5,200.00	3.63	190.46	5,190.82	-286.88	-52.98	1,474,008.062	3,211,984.105	40.632043	-104.736241	
5,400.00	3.63	190.46	5,390.42	-299.33	-55.28	1,473,995.595	3,211,981.914	40.632008	-104.736249	
5,600.00	3.63	190.46	5,590.02	-311.77	-57.58	1,473,983.127	3,211,979.722	40.631974	-104.736258	
5,800.00	3.63	190.46	5,789.62	-324.22	-59.88	1,473,970.660	3,211,977.531	40.631940	-104.736266	
6,000.00	3.63	190.46	5,989.22	-336.67	-62.17	1,473,958.193	3,211,975.340	40.631906	-104.736274	
6,200.00	3.63	190.46	6,188.81	-349.12	-64.47	1,473,945.726	3,211,973.148	40.631872	-104.736283	
6,400.00	3.63	190.46	6,388.41	-361.57	-66.77	1,473,933.259	3,211,970.957	40.631838	-104.736291	
6,600.00	3.63	190.46	6,588.01	-374.01	-69.07	1,473,920.792	3,211,968.765	40.631803	-104.736299	
6,789.19	3.63	190.46	6,776.82	-385.79	-71.24	1,473,908.998	3,211,966.692	40.631771	-104.736307	
KOP 8/100										
6,800.00	3.59	176.71	6,787.61	-386.46	-71.29	1,473,908.324	3,211,966.655	40.631769	-104.736307	
7,000.00	16.65	103.15	6,984.50	-399.32	-42.84	1,473,895.712	3,211,995.214	40.631734	-104.736205	
7,200.00	32.45	96.73	7,165.88	-412.21	38.88	1,473,883.527	3,212,077.045	40.631699	-104.735910	
7,400.00	48.37	94.27	7,317.68	-424.13	167.55	1,473,872.713	3,212,205.809	40.631666	-104.735447	
7,600.00	64.33	92.80	7,428.15	-434.17	333.19	1,473,864.107	3,212,371.529	40.631638	-104.734850	
7,800.00	80.29	91.69	7,488.73	-441.53	522.97	1,473,858.378	3,212,561.366	40.631618	-104.734166	
7,921.58	90.00	91.08	7,499.00	-444.45	643.94	1,473,856.499	3,212,682.352	40.631610	-104.733730	
LP 90 Inc, 91.08 Az										
8,000.00	90.00	91.08	7,499.00	-445.93	722.34	1,473,855.698	3,212,760.766	40.631606	-104.733448	
8,200.00	90.00	91.08	7,499.00	-449.69	922.31	1,473,853.655	3,212,960.756	40.631596	-104.732727	
8,400.00	90.00	91.08	7,499.00	-453.46	1,122.27	1,473,851.612	3,213,160.745	40.631585	-104.732007	
8,600.00	90.00	91.08	7,499.00	-457.23	1,322.23	1,473,849.569	3,213,360.735	40.631575	-104.731286	
8,800.00	90.00	91.08	7,499.00	-460.99	1,522.20	1,473,847.526	3,213,560.724	40.631565	-104.730566	
9,000.00	90.00	91.08	7,499.00	-464.76	1,722.16	1,473,845.483	3,213,760.714	40.631554	-104.729846	



Microsoft
Planning Report - Geographic

Database:	EDM 5000.14 Single User Db	Local Co-ordinate Reference:	Well SIMPSON 25-30-8H
Company:	Edge Energy, LLC	TVD Reference:	WELL @ 5029.00usft (Original Well Elev)
Project:	Sec. 26-T8N-R66W	MD Reference:	WELL @ 5029.00usft (Original Well Elev)
Site:	Simpson 26	North Reference:	True
Well:	SIMPSON 25-30-8H	Survey Calculation Method:	Minimum Curvature
Wellbore:	Wellbore #1		
Design:	Design #1 26June18 mnh		

Planned Survey										
Measured Depth (usft)	Inclination (°)	Azimuth (°)	Vertical Depth (usft)	+N/-S (usft)	+E/-W (usft)	Map Northing (usft)	Map Easting (usft)	Latitude	Longitude	
9,200.00	90.00	91.08	7,499.00	-468.52	1,922.13	1,473,843.440	3,213,960.703	40.631544	-104.729125	
9,400.00	90.00	91.08	7,499.00	-472.29	2,122.09	1,473,841.397	3,214,160.693	40.631533	-104.728405	
9,600.00	90.00	91.08	7,499.00	-476.06	2,322.06	1,473,839.354	3,214,360.683	40.631523	-104.727684	
9,800.00	90.00	91.08	7,499.00	-479.82	2,522.02	1,473,837.311	3,214,560.672	40.631513	-104.726964	
10,000.00	90.00	91.08	7,499.00	-483.59	2,721.99	1,473,835.268	3,214,760.662	40.631502	-104.726243	
10,200.00	90.00	91.08	7,499.00	-487.35	2,921.95	1,473,833.225	3,214,960.651	40.631492	-104.725523	
10,400.00	90.00	91.08	7,499.00	-491.12	3,121.92	1,473,831.182	3,215,160.641	40.631481	-104.724803	
10,600.00	90.00	91.08	7,499.00	-494.88	3,321.88	1,473,829.139	3,215,360.630	40.631471	-104.724082	
10,800.00	90.00	91.08	7,499.00	-498.65	3,521.84	1,473,827.096	3,215,560.620	40.631461	-104.723362	
11,000.00	90.00	91.08	7,499.00	-502.42	3,721.81	1,473,825.053	3,215,760.610	40.631450	-104.722641	
11,200.00	90.00	91.08	7,499.00	-506.18	3,921.77	1,473,823.010	3,215,960.599	40.631440	-104.721921	
11,400.00	90.00	91.08	7,499.00	-509.95	4,121.74	1,473,820.967	3,216,160.589	40.631429	-104.721200	
11,600.00	90.00	91.08	7,499.00	-513.71	4,321.70	1,473,818.924	3,216,360.578	40.631419	-104.720480	
11,800.00	90.00	91.08	7,499.00	-517.48	4,521.67	1,473,816.881	3,216,560.568	40.631409	-104.719759	
12,000.00	90.00	91.08	7,499.00	-521.25	4,721.63	1,473,814.838	3,216,760.557	40.631398	-104.719039	
12,200.00	90.00	91.08	7,499.00	-525.01	4,921.60	1,473,812.795	3,216,960.547	40.631388	-104.718319	
12,400.00	90.00	91.08	7,499.00	-528.78	5,121.56	1,473,810.752	3,217,160.536	40.631377	-104.717598	
12,600.00	90.00	91.08	7,499.00	-532.54	5,321.53	1,473,808.709	3,217,360.526	40.631367	-104.716878	
12,800.00	90.00	91.08	7,499.00	-536.31	5,521.49	1,473,806.666	3,217,560.516	40.631356	-104.716157	
13,000.00	90.00	91.08	7,499.00	-540.07	5,721.45	1,473,804.623	3,217,760.505	40.631346	-104.715437	
13,200.00	90.00	91.08	7,499.00	-543.84	5,921.42	1,473,802.580	3,217,960.495	40.631335	-104.714716	
13,400.00	90.00	91.08	7,499.00	-547.61	6,121.38	1,473,800.537	3,218,160.484	40.631325	-104.713996	
13,600.00	90.00	91.08	7,499.00	-551.37	6,321.35	1,473,798.494	3,218,360.474	40.631314	-104.713276	
13,800.00	90.00	91.08	7,499.00	-555.14	6,521.31	1,473,796.451	3,218,560.463	40.631304	-104.712555	
14,000.00	90.00	91.08	7,499.00	-558.90	6,721.28	1,473,794.408	3,218,760.453	40.631293	-104.711835	
14,200.00	90.00	91.08	7,499.00	-562.67	6,921.24	1,473,792.365	3,218,960.442	40.631283	-104.711114	
14,400.00	90.00	91.08	7,499.00	-566.44	7,121.21	1,473,790.322	3,219,160.432	40.631272	-104.710394	
14,600.00	90.00	91.08	7,499.00	-570.20	7,321.17	1,473,788.279	3,219,360.422	40.631262	-104.709673	
14,800.00	90.00	91.08	7,499.00	-573.97	7,521.14	1,473,786.236	3,219,560.411	40.631251	-104.708953	
15,000.00	90.00	91.08	7,499.00	-577.73	7,721.10	1,473,784.193	3,219,760.401	40.631241	-104.708233	
15,200.00	90.00	91.08	7,499.00	-581.50	7,921.06	1,473,782.150	3,219,960.390	40.631230	-104.707512	
15,400.00	90.00	91.08	7,499.00	-585.26	8,121.03	1,473,780.107	3,220,160.380	40.631220	-104.706792	
15,600.00	90.00	91.08	7,499.00	-589.03	8,320.99	1,473,778.064	3,220,360.369	40.631209	-104.706071	
15,800.00	90.00	91.08	7,499.00	-592.80	8,520.96	1,473,776.021	3,220,560.359	40.631199	-104.705351	
16,000.00	90.00	91.08	7,499.00	-596.56	8,720.92	1,473,773.978	3,220,760.348	40.631188	-104.704630	
16,200.00	90.00	91.08	7,499.00	-600.33	8,920.89	1,473,771.935	3,220,960.338	40.631178	-104.703910	
16,400.00	90.00	91.08	7,499.00	-604.09	9,120.85	1,473,769.892	3,221,160.328	40.631167	-104.703190	
16,600.00	90.00	91.08	7,499.00	-607.86	9,320.82	1,473,767.849	3,221,360.317	40.631157	-104.702469	
16,800.00	90.00	91.08	7,499.00	-611.63	9,520.78	1,473,765.806	3,221,560.307	40.631146	-104.701749	
17,000.00	90.00	91.08	7,499.00	-615.39	9,720.75	1,473,763.763	3,221,760.296	40.631136	-104.701028	
17,200.00	90.00	91.08	7,499.00	-619.16	9,920.71	1,473,761.720	3,221,960.286	40.631125	-104.700308	
17,400.00	90.00	91.08	7,499.00	-622.92	10,120.67	1,473,759.677	3,222,160.275	40.631115	-104.699587	
17,600.00	90.00	91.08	7,499.00	-626.69	10,320.64	1,473,757.634	3,222,360.265	40.631104	-104.698867	
17,800.00	90.00	91.08	7,499.00	-630.45	10,520.60	1,473,755.591	3,222,560.254	40.631093	-104.698147	
18,000.00	90.00	91.08	7,499.00	-634.22	10,720.57	1,473,753.548	3,222,760.244	40.631083	-104.697426	
18,051.58	90.00	91.08	7,499.00	-635.19	10,772.14	1,473,753.021	3,222,811.825	40.631080	-104.697240	

TD at 18051.58



Database:	EDM 5000.14 Single User Db	Local Co-ordinate Reference:	Well SIMPSON 25-30-8H
Company:	Edge Energy, LLC	TVD Reference:	WELL @ 5029.00usft (Original Well Elev)
Project:	Sec. 26-T8N-R66W	MD Reference:	WELL @ 5029.00usft (Original Well Elev)
Site:	Simpson 26	North Reference:	True
Well:	SIMPSON 25-30-8H	Survey Calculation Method:	Minimum Curvature
Wellbore:	Wellbore #1		
Design:	Design #1 26June18 mnh		

Design Targets										
Target Name	Dip Angle	Dip Dir.	TVD	+N/-S	+E/-W	Northing	Easting	Latitude	Longitude	
- hit/miss target	(°)	(°)	(usft)	(usft)	(usft)	(usft)	(usft)			
- Shape										
SHL 2432' FSL, 338' FEI - plan hits target center - Point	0.00	0.00	0.00	0.00	0.00	1,474,295.387	3,212,034.611	40.632830	-104.736050	
LP 1980' FSL, 300' FWL - plan hits target center - Point	0.00	0.00	7,499.00	-444.45	643.94	1,473,856.499	3,212,682.352	40.631610	-104.733730	
BHL 1980' FSL, 300' FEI - plan hits target center - Point	0.00	0.00	7,499.00	-635.19	10,772.14	1,473,753.021	3,222,811.825	40.631080	-104.697240	

Plan Annotations					
Measured Depth	Vertical Depth	Local Coordinates		Comment	
(usft)	(usft)	+N/-S	+E/-W		
		(usft)	(usft)		
500.00	500.00	0.00	0.00	Start Build 2.00	
681.44	681.32	-5.65	-1.04	Hold 3.63 Inc, 190.46 Az	
6,789.19	6,776.82	-385.79	-71.24	KOP 8/100	
7,921.58	7,499.00	-444.45	643.94	LP 90 Inc, 91.08 Az	
18,051.58	7,499.00	-635.19	10,772.14	TD at 18051.58	