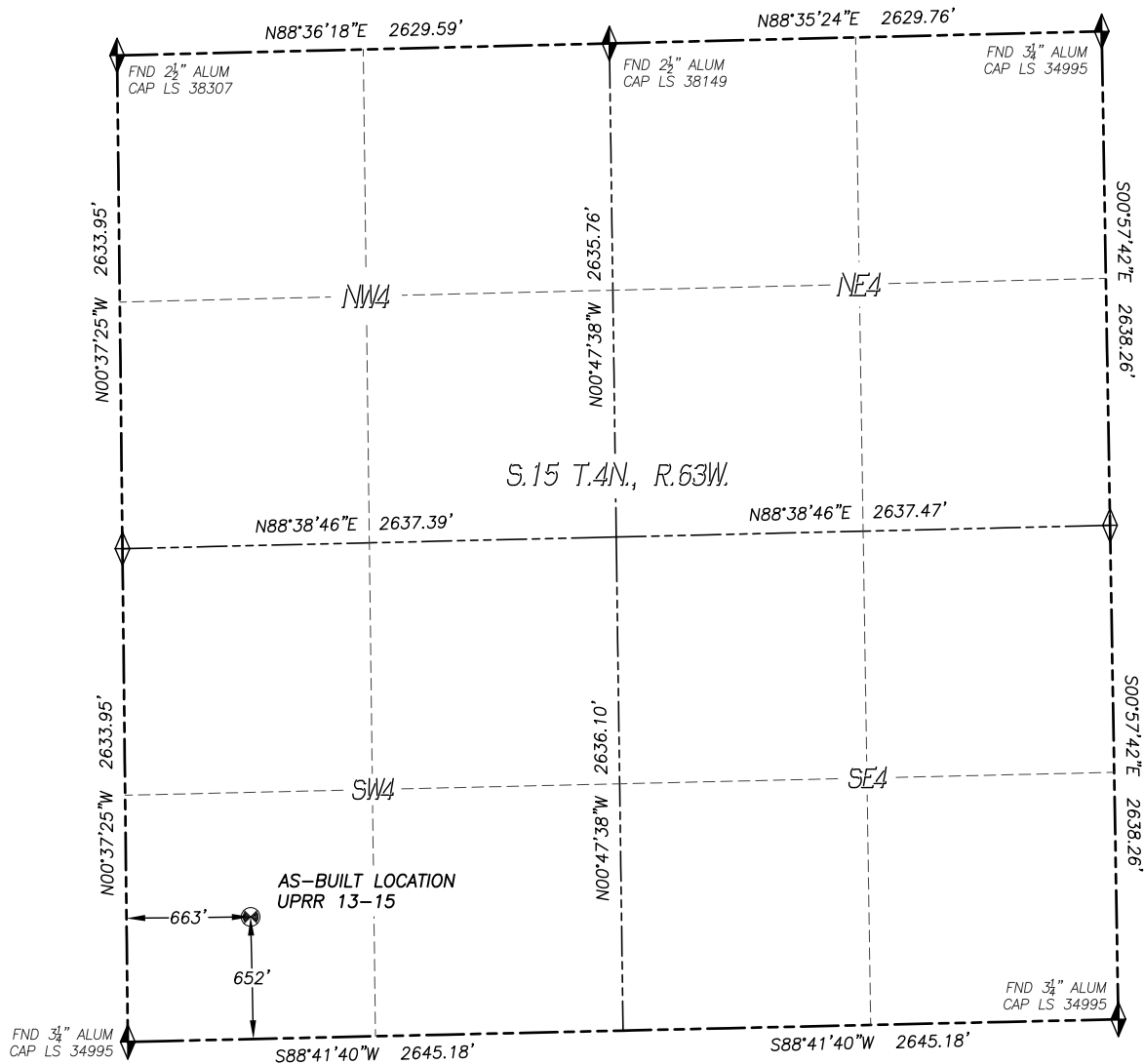


# WELL AS-BUILT SURVEY

## UPRR 13-15

SECTION 15, TOWNSHIP 4 NORTH, RANGE 63 WEST OF THE 6TH P.M.



IN ACCORDANCE WITH A REQUEST FROM CONFLUENCE RESOURCES., DALEY LAND SURVEYING, INC. HAS DETERMINED THE SURFACE LOCATION OF THE UPRR 13-15 WELL TO BE 652' FSL, 663' FWL, AS MEASURED AT NINETY (90) DEGREES FROM THE SECTION LINES OF SECTION 15, TOWNSHIP 4 NORTH, RANGE 63 WEST, OF THE 6TH PRINCIPAL MERIDIAN, WELD COUNTY, COLORADO.

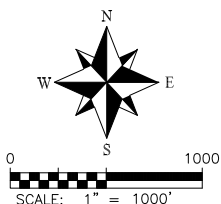
I HEREBY STATE THAT THIS WELL AS-BUILT SURVEY WAS PREPARED BY ME OR UNDER MY DIRECT SUPERVISION, THAT THE WORK WAS COMPLETED ON 7/17/2018 FOR AND ON BEHALF OF CONFLUENCE RESOURCES., AND THAT THIS MAP DOES NOT REPRESENT A BOUNDARY SURVEY, IT IS NOT A LAND SURVEY PLAT OR AN IMPROVEMENT SURVEY PLAT AND IT IS NOT TO BE RELIED UPON FOR THE ESTABLISHMENT OF FENCE, BUILDING OR OTHER FUTURE IMPROVEMENT LINES.

### NOTES:

- 1) BEARINGS FOR THIS MAP ARE ASSUMED AND BASED UPON GPS OBSERVATIONS MADE BETWEEN MONUMENTS LOCATED AT THE NORTHWEST CORNER AND NORTH QUARTER CORNER OF SECTION 15, T.4N., R.63W.
- 2) HORIZONTAL DATUM IS NAD83.
- 3) VERTICAL DATUM IS NAVD88 AND ORIGINATES FROM THE LOCAL C.O.R.S. NETWORK, UTILIZING THE GEOID12A MODEL.
- 4) SURFACE USE: PASTURE.
- 5) INST. OPERATOR: SCOTT ESTABROOKS.
- 6) LOCATION DETERMINED WITH METAL LOCATOR, THE TOP OF THE WELL HEAD WAS LOCATED.

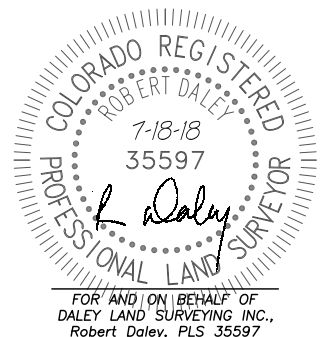


**DALEY LAND  
SURVEYING, INC.**  
PARKER, COLORADO  
303.953.9841



### NAD 83 LATITUDE AND LONGITUDE

**SURFACE LOCATION:**  
LATITUDE: N40.30676°  
LONGITUDE: W104.43125°  
ELEV.: 4765'  
PDOP: 1.2  
QTR/QTR: SW4/SW4



# LOCAATION PICTURES

UPRR 13-15

SECTION 15, TOWNSHIP 4 NORTH, RANGE 63 WEST OF THE 6TH P.M.

DATE: 7/13/18



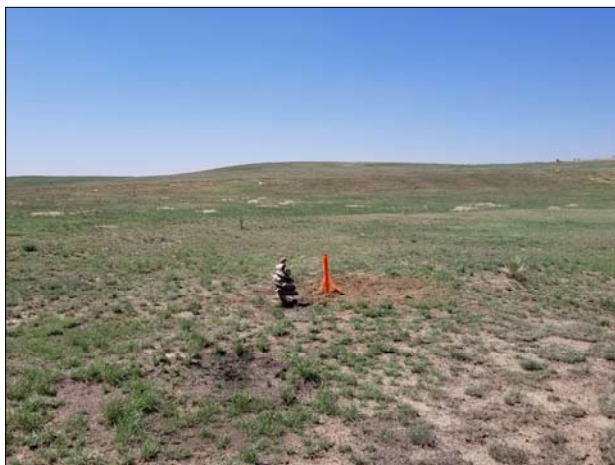
LOOKING NORTH



LOOKING WEST



LOOKING EAST



LOOKING SOUTH