

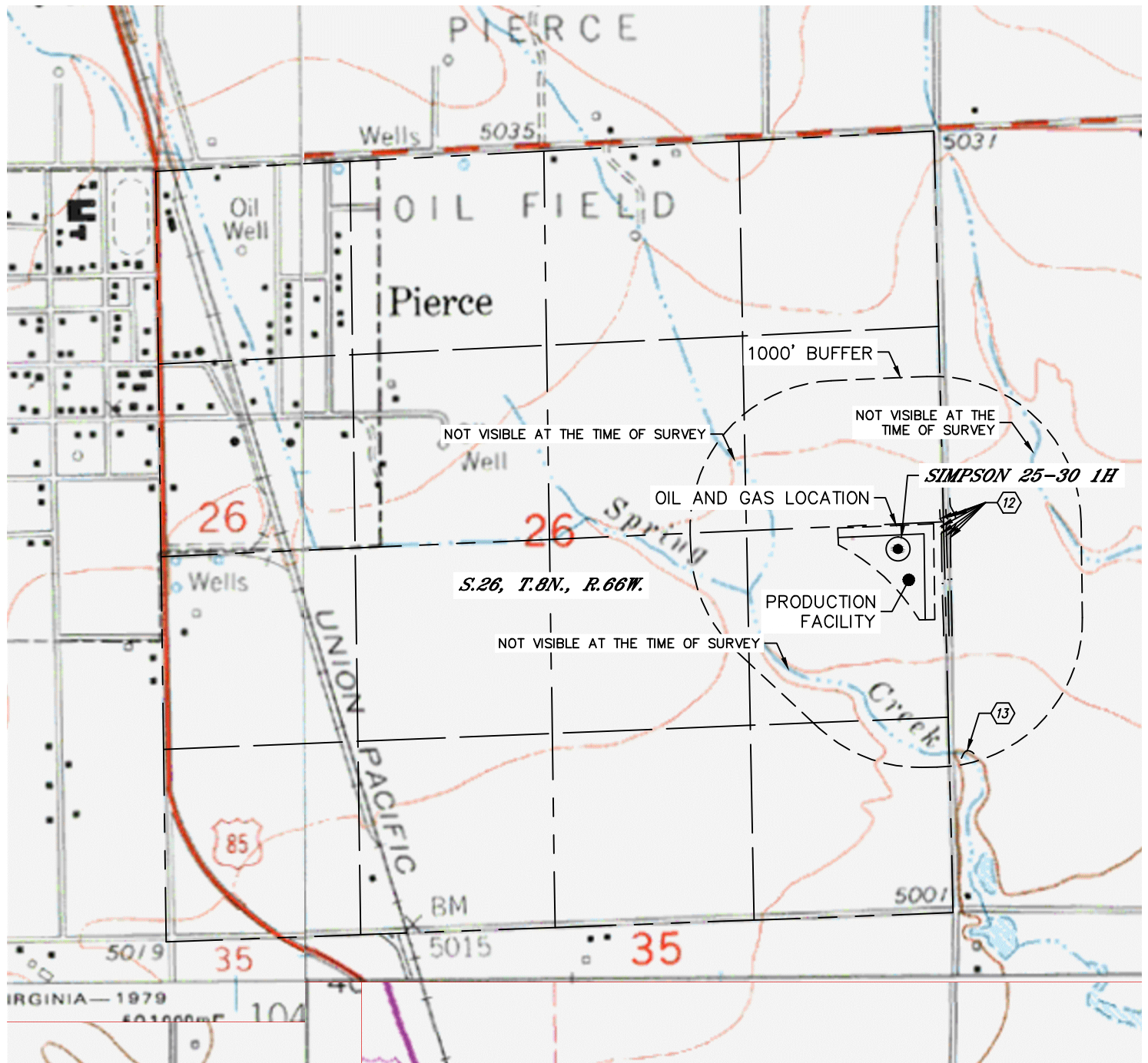


Lat40°, Inc. 6250 W. 10th Street, Unit 2, Greeley, CO 970-515-5294

HYDROLOGY MAP

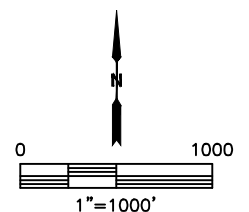
SIMPSON 26 PAD

SECTION: 26
TOWNSHIP: 8N
RANGE: 66W
6TH. P.M.
WELD COUNTY, CO



DISTANCES MEASURED FROM THE EDGE OF THE OIL AND GAS LOCATION.

- ⑫ DITCH 51', 52', 89', & 113' E, 55', 97' & 153' NE
- ⑬ POND 915' SE



DATE: 6/18/2018
PROJECT#: 2018095