



Lat40°, Inc. 6250 W. 10th Street, Unit 2, Greeley, CO 970-515-5294

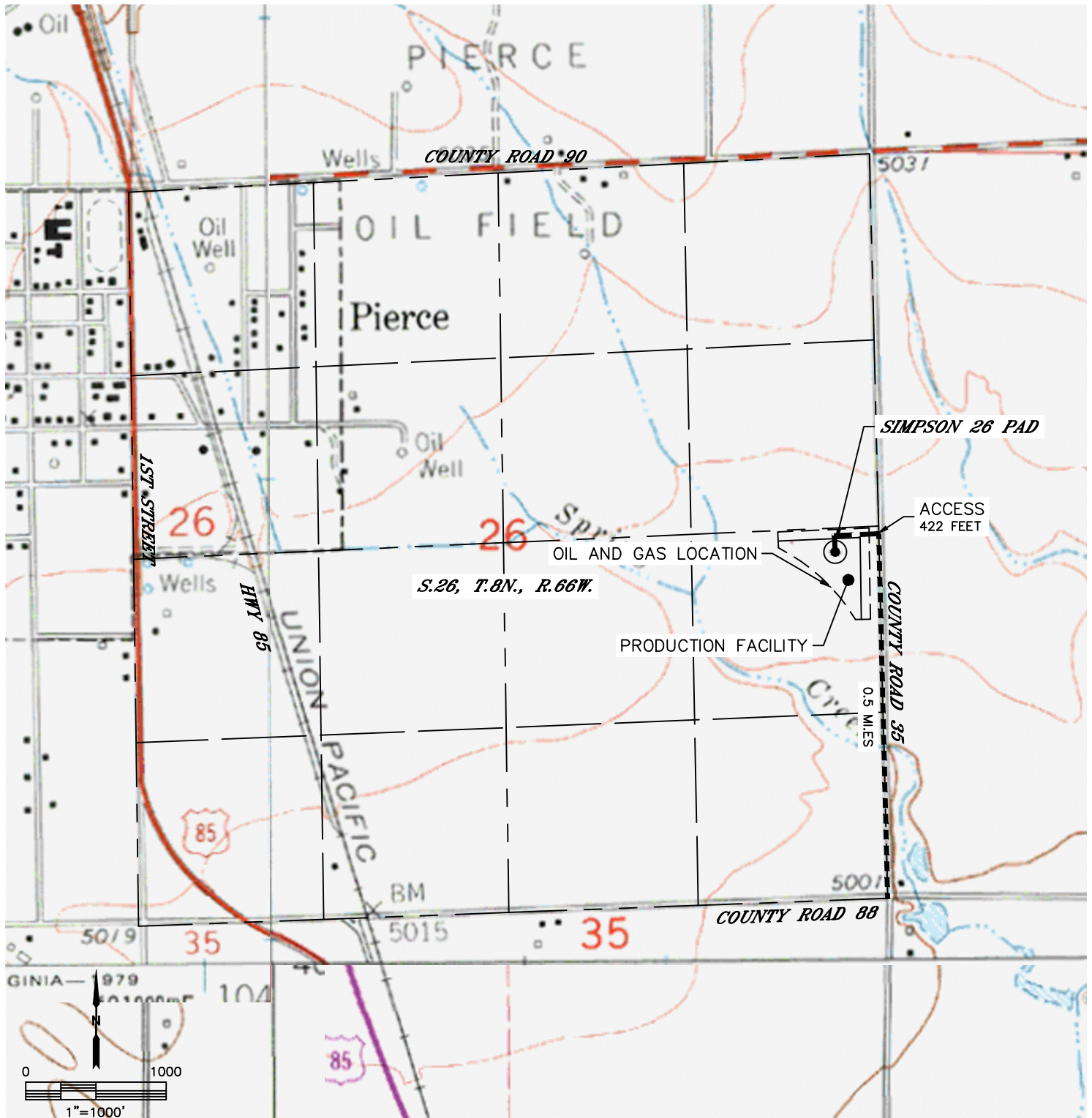
ACCESS ROAD MAP

SIMPSON 26 PAD

SECTION: 26
TOWNSHIP: 8N
RANGE: 66W
6TH. P.M.
WELD COUNTY, CO

DRIVING DIRECTIONS TO SIMPSON 26 PAD

FROM THE INTERSECTION OF COUNTY ROAD 88 AND COUNTY ROAD 35, DRIVE NORTH ON COUNTY ROAD 35 FOR 0.5 MILES, THEN TURN WEST ONTO PROPOSED ACCESS AND DRIVE 422' TO THE PROPOSED LOCATION.





Lat40°, Inc. 6250 W. 10th Street, Unit 2, Greeley, CO 970-515-5294

ACCESS ROAD MAP

SIMPSON 26 PAD

SECTION: 26
TOWNSHIP: 8N
RANGE: 66W
6TH. P.M.
WELD COUNTY, CO

