

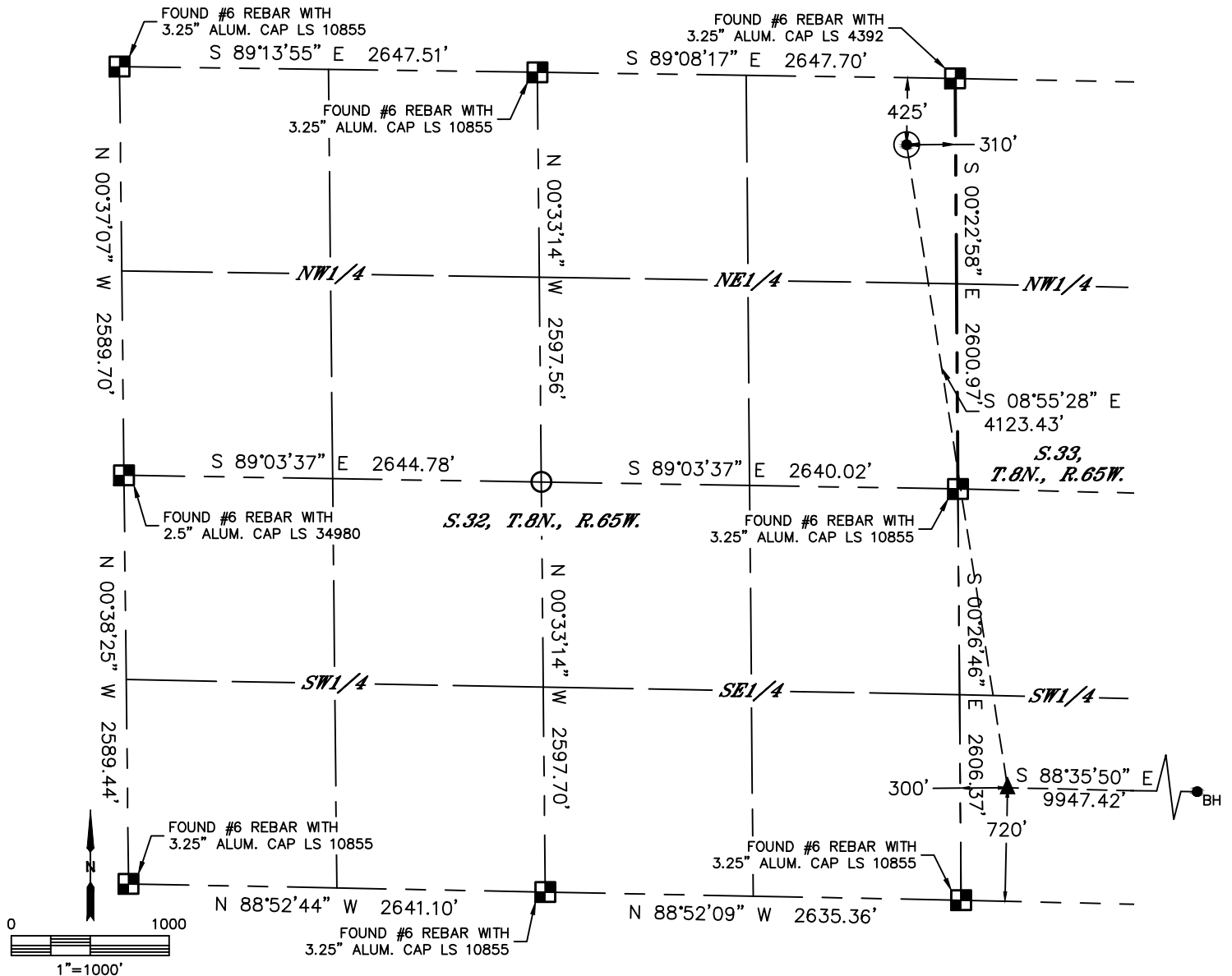


Lat40°, Inc. 6250 W. 10th Street, Unit 2, Greeley, CO 970-515-5294

WELL LOCATION CERTIFICATE

GASPERICH 33-34-11H

SECTION: 32
TOWNSHIP: 8N
RANGE: 65W
6TH. P.M.
WELD COUNTY, CO



CLIENT: EDGE ENERGY						LANDMAN: ERIK LARSEN			
INSTRUMENT OPERATOR: SCOTT SHERARD						SURVEY DATE: 3/23/2018		SURFACE USE: RANGELAND	
SHL FOOTAGE				SHL LAT °	SHL LONG °	SHL PDOP	SHL ELEV (FT.)	SHL 1/4/1/4	SHL S-T-R
425	FNL	310	FEL	40.62414	-104.67829	2.8	4947	NENE	32-8-65

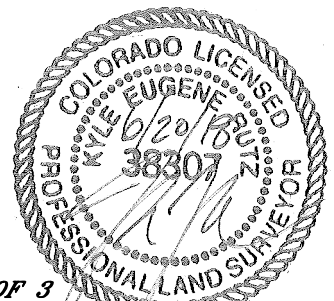
BHL FOOTAGE				BHL LAT °	BHL LONG °	BHL S-T-R	EP LAT °	EP LONG °	EP S-T-R
720	FSL	300	FEL	40.61202	-104.64032	34-8-65	40.61295	-104.67612	33-8-65

LEGEND

- = ALIQUOT MONUMENT AS DESCRIBED
- = CALCULATED POSITION
- = SURFACE HOLE LOCATION (SHL)
- ▲ = ENTRY POINT LOCATION (EP)
- _{BH} = BOTTOM HOLE LOCATION (BHL)
- ⊙ = EXISTING WELL
- ⊙ = ABANDONED WELL

NOTE:

- 1) Bearings shown are Grid Bearings of the Colorado State Plane Coordinate System, North Zone, North American Datum 1983. The lineal dimensions as contained herein are based upon the "U.S. Survey Foot."
- 2) Distances to section lines measured at 90 degrees from said section lines.
- 3) Ground elevations are based on an observed GPS elevation (NAVD 1988 DATUM).
- 4) Latitude and Longitude shown are (NAD 83 DATUM).
- 5) IMPROVEMENTS: See LOCATION DRAWING for all visible improvements within 500' of oil and gas location.
- 6) This map does not represent a boundary survey.



SHEET 1 OF 3

Kyle E. Rutz—On behalf of Lat40°, Inc.
Colorado Licensed Professional Land Surveyor No. 38307
DATE: 6/20/2018
PROJECT#: 2018054

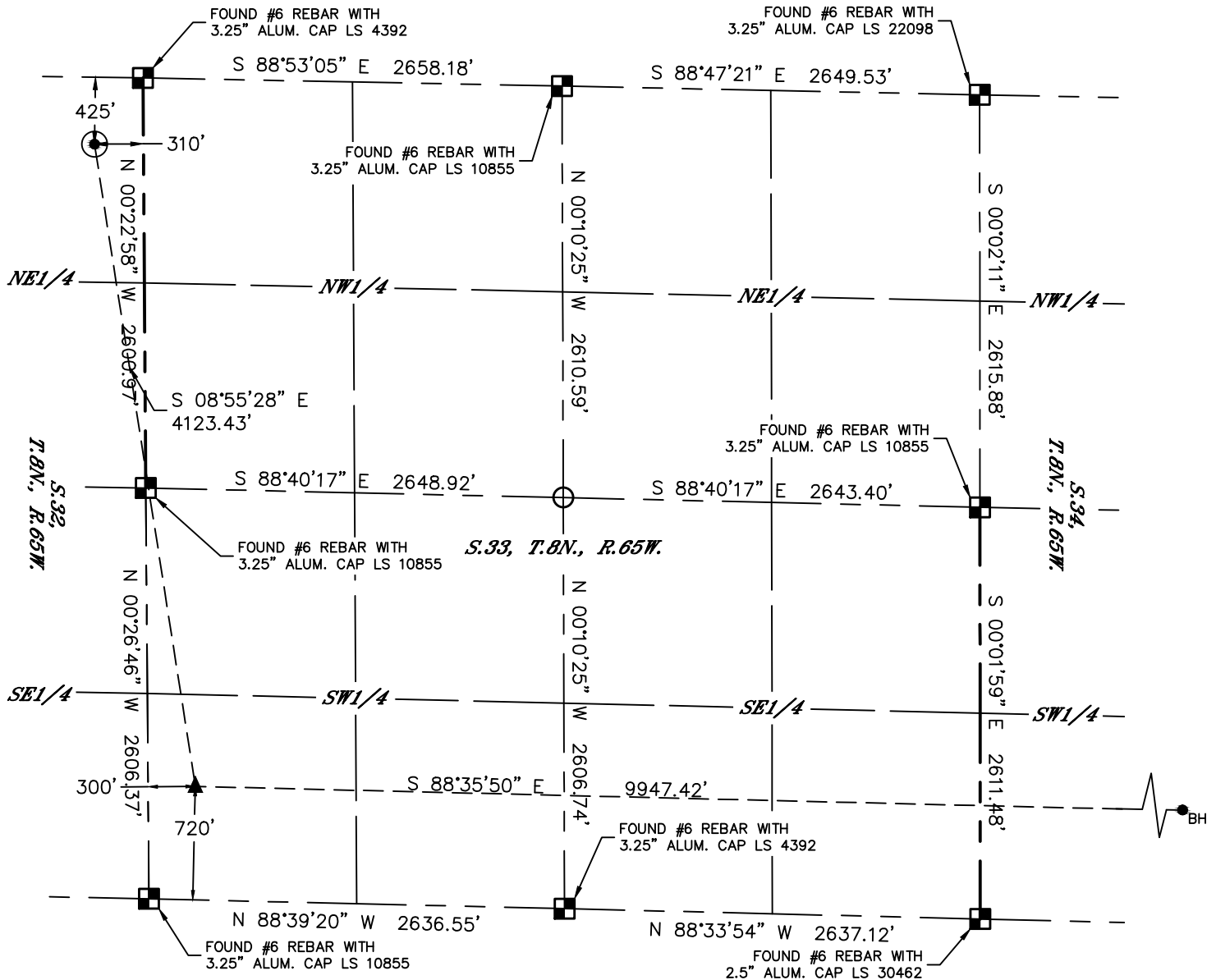


Lat40°, Inc. 6250 W. 10th Street, Unit 2, Greeley, CO 970-515-5294

WELL LOCATION CERTIFICATE

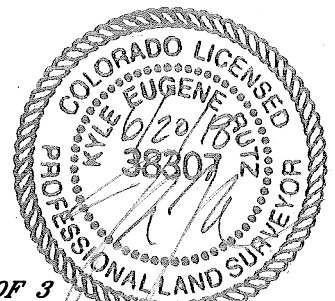
GASPERICH 33-34-11H

SECTION: 32
TOWNSHIP: 8N
RANGE: 65W
6TH. P.M.
WELD COUNTY, CO



LEGEND

- = ALIQUOT MONUMENT AS DESCRIBED
- = CALCULATED POSITION
- = SURFACE HOLE LOCATION (SHL)
- = ENTRY POINT LOCATION (EP)
- = BOTTOM HOLE LOCATION (BHL)
- = EXISTING WELL
- = ABANDONED WELL



SHEET 2 OF 3

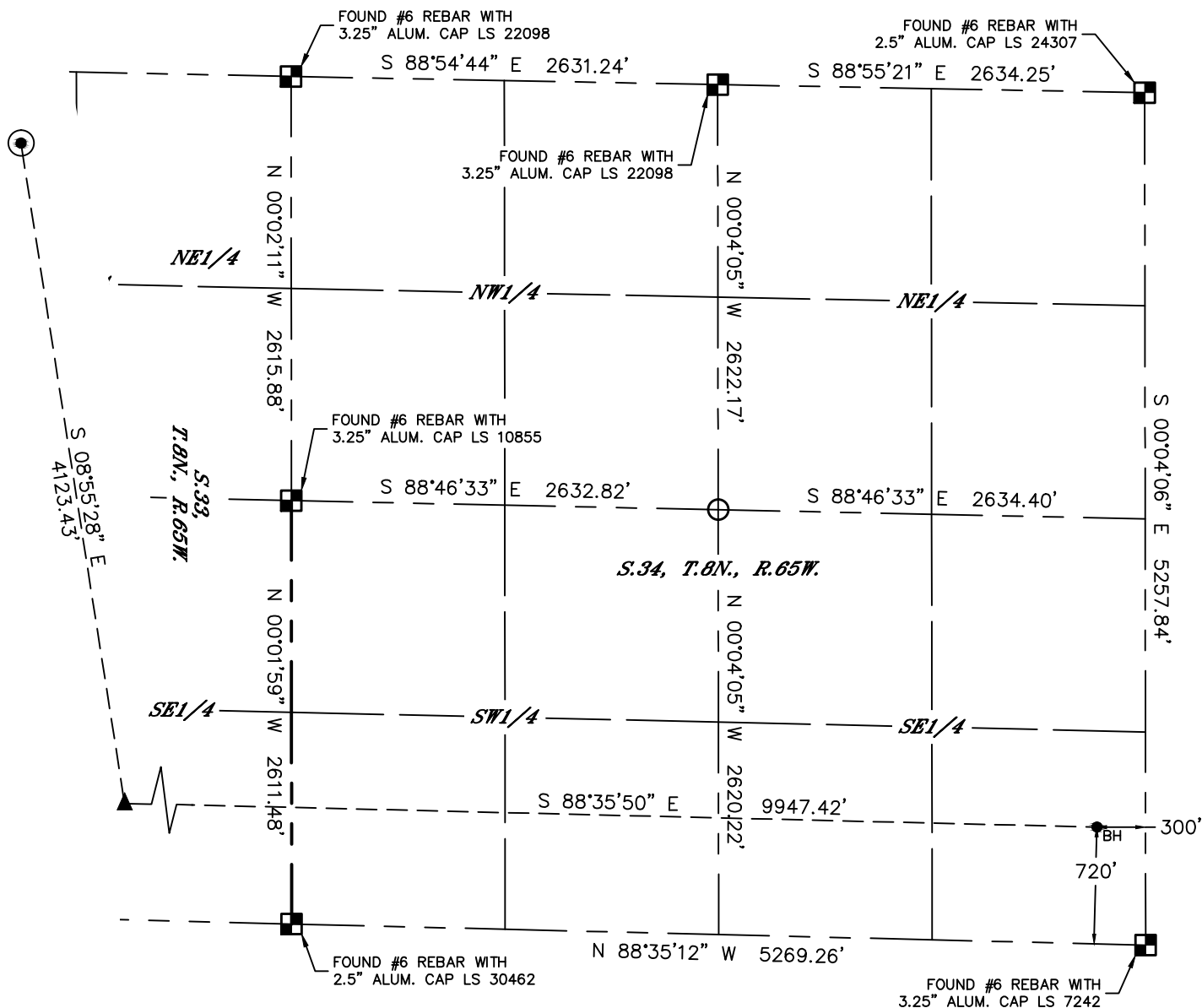
Kyle E. Rutz—On behalf of Lat40°, Inc.
Colorado Licensed Professional Land Surveyor No. 38307
DATE: 6/20/2018
PROJECT#: 2018054

Lat40°, Inc. 6250 W. 10th Street, Unit 2, Greeley, CO 970-515-5294








WELL LOCATION CERTIFICATE

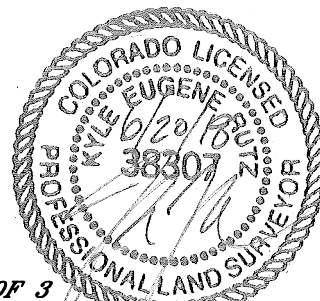
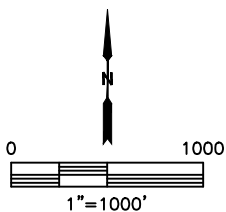
GASPERICH 33-34-11H

SECTION: 32
TOWNSHIP: 8N
RANGE: 65W
6TH. P.M.
WELD COUNTY, CO



LEGEND

-  = ALIQUOT MONUMENT AS DESCRIBED
 = CALCULATED POSITION
 = SURFACE HOLE LOCATION (SHL)
 = ENTRY POINT LOCATION (EP)
 = BOTTOM HOLE LOCATION (BHL)
 = EXISTING WELL
 = ABANDONED WELL



SHEET 3 OF 3

Kyle E. Rutz—On behalf of L&L, Inc.
Colorado Licensed Professional Land Surveyor No. 38307
DATE: 6/20/2018
PROJECT#: 2018054