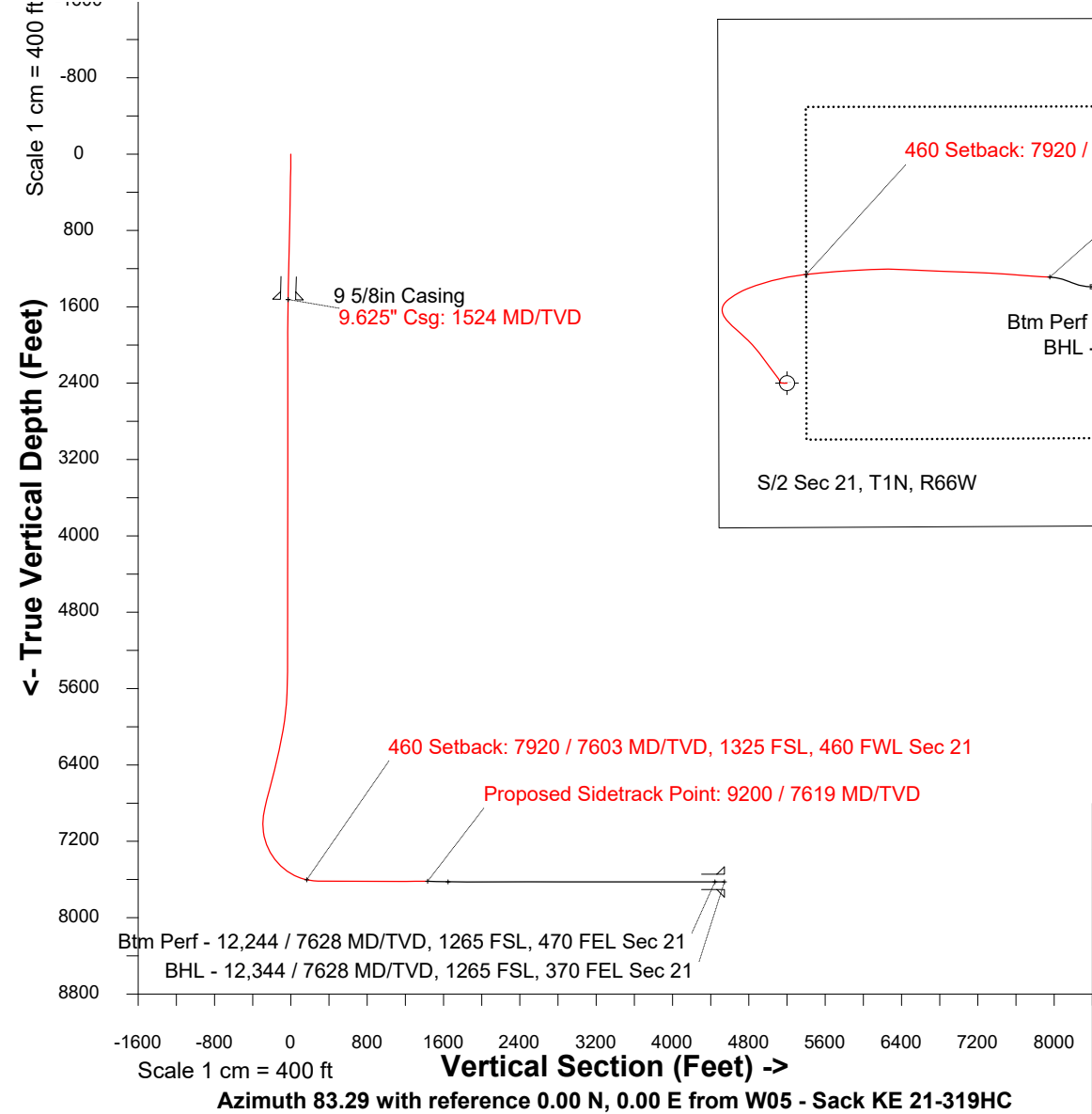


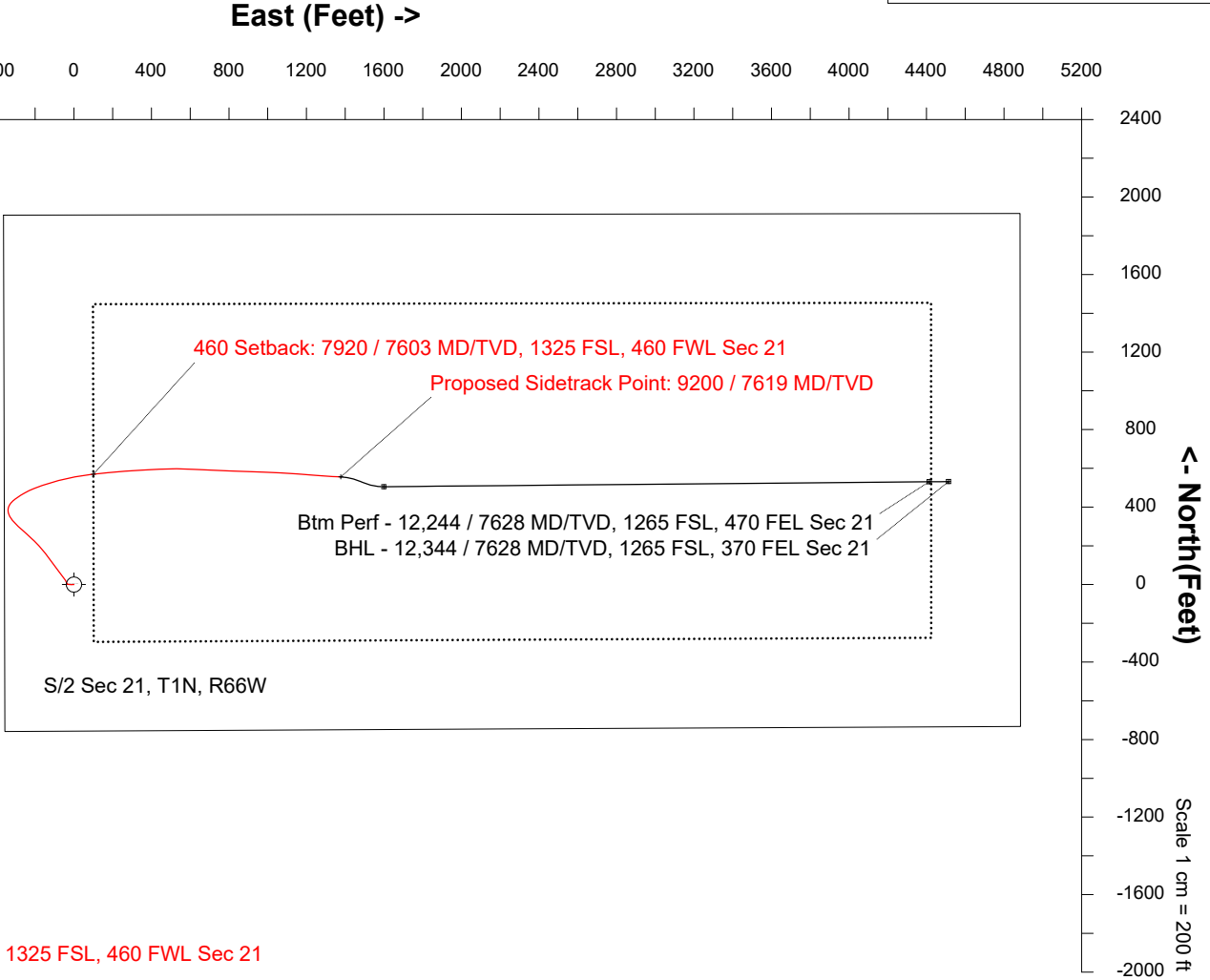
May-21-2018
EMM-2015 [2000.0-2020.0] Dip: 66.41 deg Field: 52108.5 nT
Lat: N40 1 54.0372 Long: W104 47 24.6996 Elev: 5020.90 ft
Magnetic North is 8.16 deg East of TRUE North
To correct azimuth from Magnetic to TRUE add 8.16 deg



Great Western Operating Company, LLC

Location	Colorado	Slot	W05 - Sack KE 21-319HC
Field	Wattenburg	Well	Sack KE 21-319HC
Installation	Sack	Wellbore	Sack KE 21-319HC-ST01 (PWB)

Created by	admin
Date plotted	17-Jul-2018
Plot reference is Sack KE 21-319HC-ST01 (PWB).	
Ref wellpath is Sack KE 21-319HC (PWP#1).	
Coordinates are in Feet reference W05 - Sack KE 21-319HC.	
True Vertical Depths are reference Rig Datum.	
Measured Depths are reference Rig Datum.	
Rig Datum: Planned Datum #1	
Rig Datum to Mean Sea Level: 5040.90 ft.	
Plot North is aligned to TRUE North.	



WELL PROFILE DATA								
Point	MD	Inc	Azi	TVD	North	East	deg/100ft	V. Sect
KOP	9200.00	90.08	92.07	7618.90	N 555.48	E 1377.15		1432.63
End of Drop/Turn	9299.44	87.20	112.97	7621.29	N 534.06	E 1473.66	21.20	1525.97
End of Hold	9318.78	87.20	112.97	7622.23	N 526.53	E 1491.44	0.00	1542.75
Target	9430.28	90.00	89.48	7625.00	N 505.00	E 1600.00	21.20	1648.05
Target Btm Pe...Sec 21	12244.20	90.00	89.48	7625.00	N 530.34	E 4413.80	0.00	4445.54
End of Turn	12248.60	90.00	89.57	7625.00	N 530.38	E 4418.21	2.00	4449.92
T.D. & Target BHL... 21	12344.17	90.00	89.57	7625.00	N 531.09	E 4513.77	0.00	4544.91