

LEGEND:

- └─ = 90° SYMBOL
- = PROPOSED WELLHEAD.
- ◊ = ENTRY POINT.
- ⬡ = BTM PERF.
- = TARGET BOTTOM HOLE.
- ▲ = SECTION CORNERS LOCATED. (NAD 83)
- △ = SECTION CORNERS RE-ESTABLISHED. (Not Set on Ground.) (NAD 83)

T1N, R66W, 6th P.M.

GREAT WESTERN OPERATING COMPANY

SACK KE 21-319HC-ST01
SW 1/4 SW 1/4, SECTION 21, T1N, R66W, 6th P.M.
WELD COUNTY, COLORADO

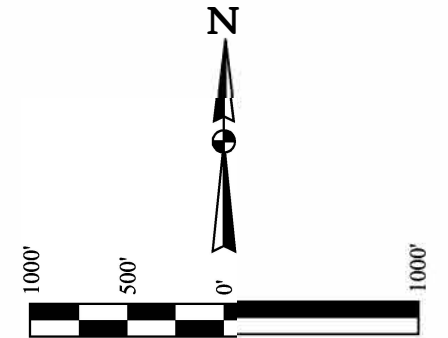
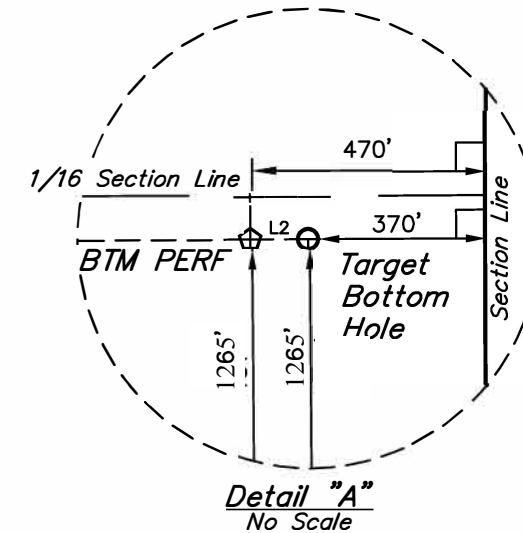
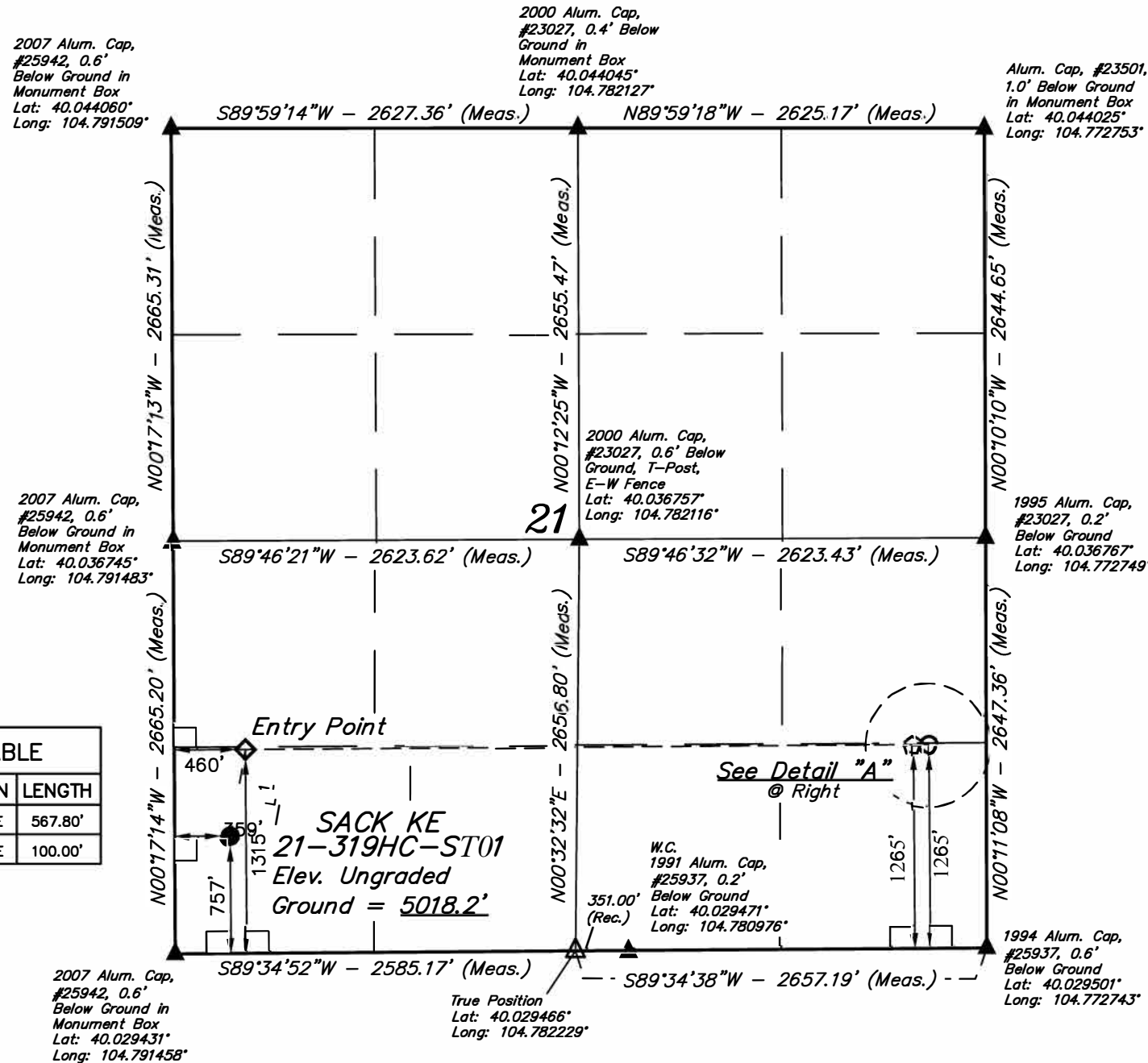
BASIS OF BEARINGS

TRANSVERSE MERCATOR PROJECTION WITH
A CENTRAL MERIDIAN OF W105°00'00".

BASIS OF ELEVATION

OPUS SOLUTION GENERATED NAVD 88

LINE TABLE		
LINE	DIRECTION	LENGTH
L1	N10°00'34"E	567.80'
L2	N89°34'38"E	100.00'



CERTIFICATE

THIS IS TO CERTIFY THAT THE ABOVE PLAT WAS PREPARED FROM FIELD NOTES OF ACTUAL SURVEYS MADE BY ME OR UNDER MY SUPERVISION, AND THAT THE SAME ARE TRUE AND CORRECT TO THE BEST OF MY KNOWLEDGE AND BELIEF.

REGISTERED LAND SURVEYOR
REGISTRATION NO. 28285
STATE OF COLORADO

REV: 1 05-21-18 K.B. (LATITUDE CORRECTION)



UELS, LLC
Corporate Office * 85 South 200 East
Vernal, UT 84078 * (435) 789-1017

SURVEYED BY	JAMES FRESHWATER, N.W.	04-18-18	SCALE
DRAWN BY	K.B.	04-30-18	1" = 1000'

WELL LOCATION PLAT