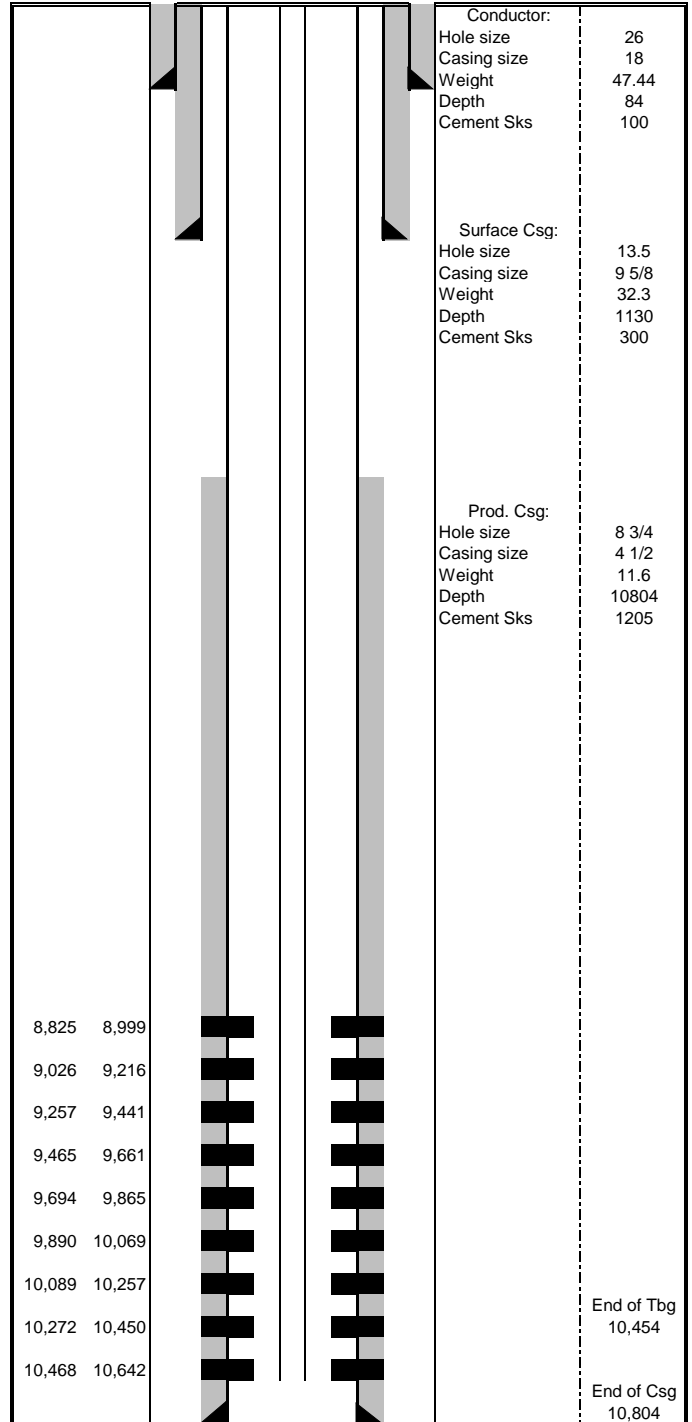


RU 512-17 Wellbore Diagram

Well	Pad	API	
RU 512-17	RU 23-17	05-045-23732	
Diagram Date	Spud Date	First Production Date	
7/17/2018	3/20/2018	6/21/2018	
Location	Meridian	County	
NESW	6th	Garfield	
Top Perf	Bottom Perf	Current EOT	
8,825	10,642	10,454	
Bottom Surf Csg	Bottom Prod Csg	TOC	
1,130	10,804	4,786	
TD	TVD	Elevation	
10,804	10,394	8,366	
PBTD	PBTVD	KB	
10,764	10,354	8,390	

Formation Tops	
Wasatch	
Wasatch G	4,584
Mesaverde	7,147
Ohio Creek	7,147
Williams Fork	7,197
Cameo	9,941
Rollins	10,713
Cozzette	
Corcoran	
Sego	



Conductor:	
Hole size	26
Casing size	18
Weight	47.44
Depth	84
Cement Sks	100

Surface Csg:	
Hole size	13.5
Casing size	9 5/8
Weight	32.3
Depth	1130
Cement Sks	300

Prod. Csg:	
Hole size	8 3/4
Casing size	4 1/2
Weight	11.6
Depth	10804
Cement Sks	1205

End of Tbg
10,454

End of Csg
10,804