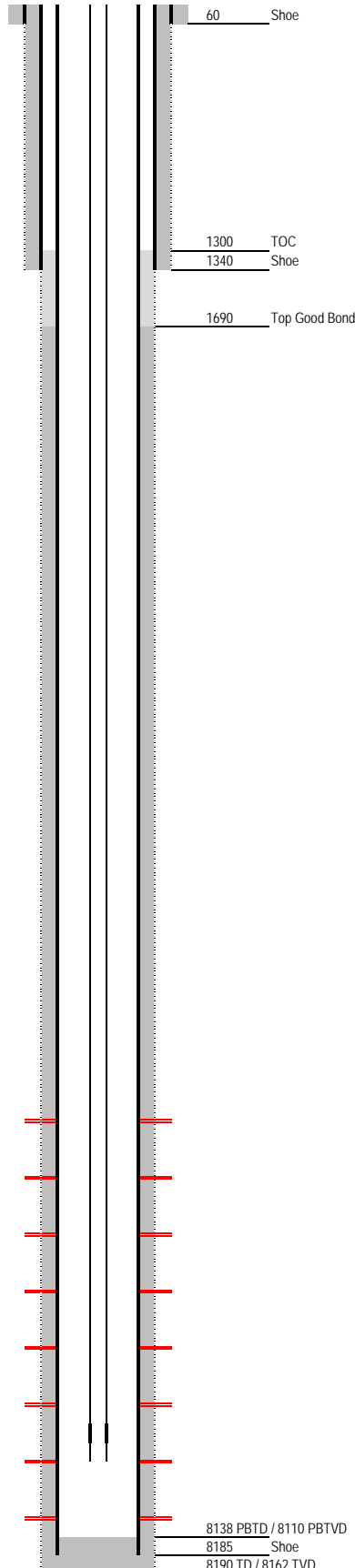


Laramie Energy

Current Wellbore Diagram

Not to Scale

Geological Tops	Depth
Wasatch G	2102
Ohio Creek	4407
Williams Fork	4658
Cameo	6930
Rollins	7312
Cozzette	7790
Corcoran	7992



Well Name Gunderson 13-11
API 05-077-09010-00
Surface Location 1706 FSL & 1790 FWL NESW S13 T09S R94W
GPS Coordinates 39.274194 -107.834527
Bottom Hole Loc 1994 FSL & 2113 FWL S13 T09S R94W
Field Brush Creek # 7562
County, State Mesa, CO
Spud Date 5/10/2006
Completion Date 8/16/2006
Diagram Date 7/17/2018
KB Elevation 7292
KB 20
GL Elevation 7272

Hole 26"
Conductor 16" @ 60
Cement 4 yds

Surface Hole 12.25" @
Casing 8.625" 32# J55 8rd STC @ 1340
Cement 420 sx = 200 sx lead @ 12.3# + 220 sx tail @ 14.2#
TOC SURFACE (calc)

Production Hole 7.875" @ 8190
Casing 4.5" 11.6# 180 8rd LTC @ 8185
Cement 1364 sx = 584 sx lead @ 11.0# 2.22 yield + 780 sx tail @ 13.6# 1.26 yield
TOC 1300
Top Good Bond 1690
CBL Date 6/21/2006

Tubing 238 jts 2-3/8" 4.7# N80 @ 7516, F Nipple 1.810" @ 7465

Perforations Stage	Zone	Interval	Date
8	Williams Fork	5955-6028	8/16/2006
7	Williams Fork	6127-6179	8/16/2006
6	Williams Fork	6256-6398	8/16/2006
5	Williams Fork	6632-6759	8/15/2006
4	Cameo	6958-7031	8/15/2006
3	Cameo	7120-7145	8/15/2006
2	Cameo	7319-7343	8/15/2006
1	Corcoran	7995-8031	8/15/2006

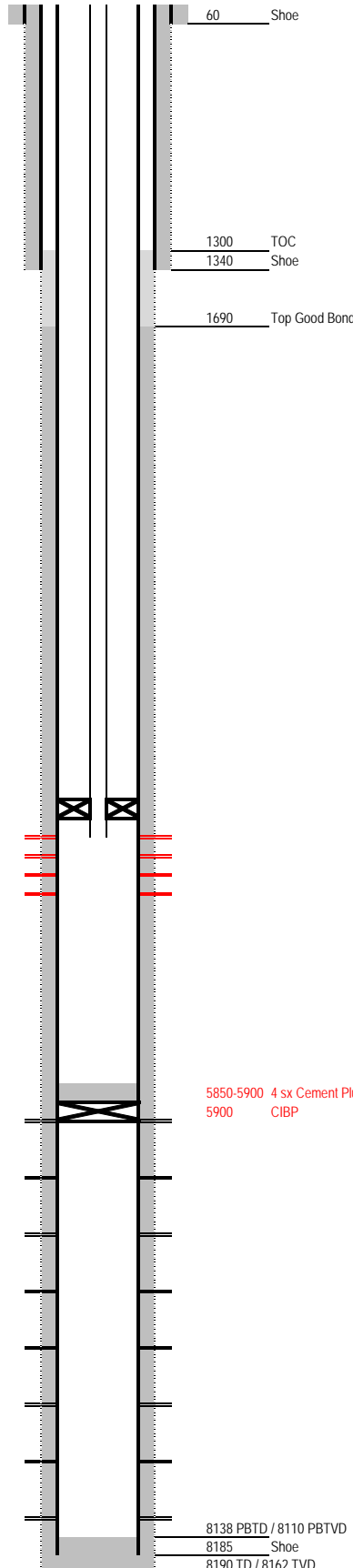
8138 PBDT / 8110 PBTVD
 8185 Shoe
 8190 TD / 8162 TVD

Laramie Energy

Proposed SWD Wellbore Diagram

Not to Scale

Geological Tops	Depth
Wasatch G	2102
Ohio Creek	4407
Williams Fork	4658
Cameo	6930
Rollins	7312
Cozzette	7790
Corcoran	7992



Well Name Gunderson 13-11
 API 05-077-09010-00
 Surface Location 1706 FSL & 1790 FWL NESW S13 T09S R94W
 GPS Coordinates 39.274194 -107.834527
 Bottom Hole Loc 1994 FSL & 2113 FWL S13 T09S R94W
 Field Brush Creek # 7562
 County, State Mesa, CO
 Spud Date 5/10/2006
 Completion Date 8/16/2006
 Diagram Date 7/17/2018
 KB Elevation 7292
 KB 20
 GL Elevation 7272

Hole 26"
 Conductor 16" @ 60
 Cement 4 yds

Surface Hole 12.25" @
 Casing 8.625" 32# J55 8rd STC @ 1340
 Cement 420 sx = 200 sx lead @ 12.3# + 220 sx tail @ 14.2#
 TOC SURFACE (calc)

Production Hole 7.875" @ 8190
 Casing 4.5" 11.6# 180 8rd LTC @ 8185
 Cement 1364 sx = 584 sx lead @ 11.0# 2.22 yield + 780 sx tail @ 13.6# 1.26 yield
 TOC 1300
 Top Good Bond 1690
 CBL Date 6/21/2006

Tubing
 4300' 2-7/8" 6.5# flush joint tbg
 2-7/8" x 2-3/8" crossover
 2-3/8" on/off tool
 2-3/8" x 10' pup jt
 4-1/2" x 2-3/8" mechanical packer @ 4340' +/-
 2-3/8" x 10' PERFORATED pup jt
 2-3/8" x 10' pup jt
 2-3/8" XN no-go nipple
 2-3/8" x 10' pup jt
 2-3/8" wireline re-entry guide @ 4370' +/-

Perforations Stage	Zone	Interval	Date	Net
	Ohio Creek	4406-4438	Proposed	32
	Ohio Creek	4547-4567	Proposed	20
	Ohio Creek	4582-4628	Proposed	46
	Ohio Creek	4636-4656	Proposed	20
8	Williams Fork	5955-6028	8/16/2006	
7	Williams Fork	6127-6179	8/16/2006	
6	Williams Fork	6256-6398	8/16/2006	
5	Williams Fork	6632-6759	8/15/2006	
4	Cameo	6958-7031	8/15/2006	
3	Cameo	7120-7145	8/15/2006	
2	Cameo	7319-7343	8/15/2006	
1	Corcoran	7995-8031	8/15/2006	