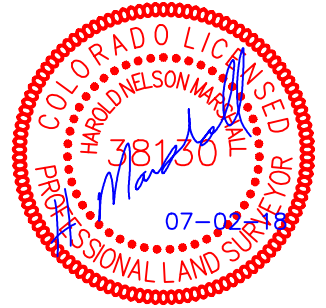




LINE TABLE		
LINE	DIRECTION	LENGTH
L1	S87°09'32"W	1058.78'
L2	S74°10'03"W	1712.85'
L3	S65°08'44"W	1796.54'
L4	S50°51'48"W	1629.56'
L5	S43°41'32"W	1820.97'
L6	S38°06'11"W	2024.47'
L7	S33°35'43"W	2242.43'

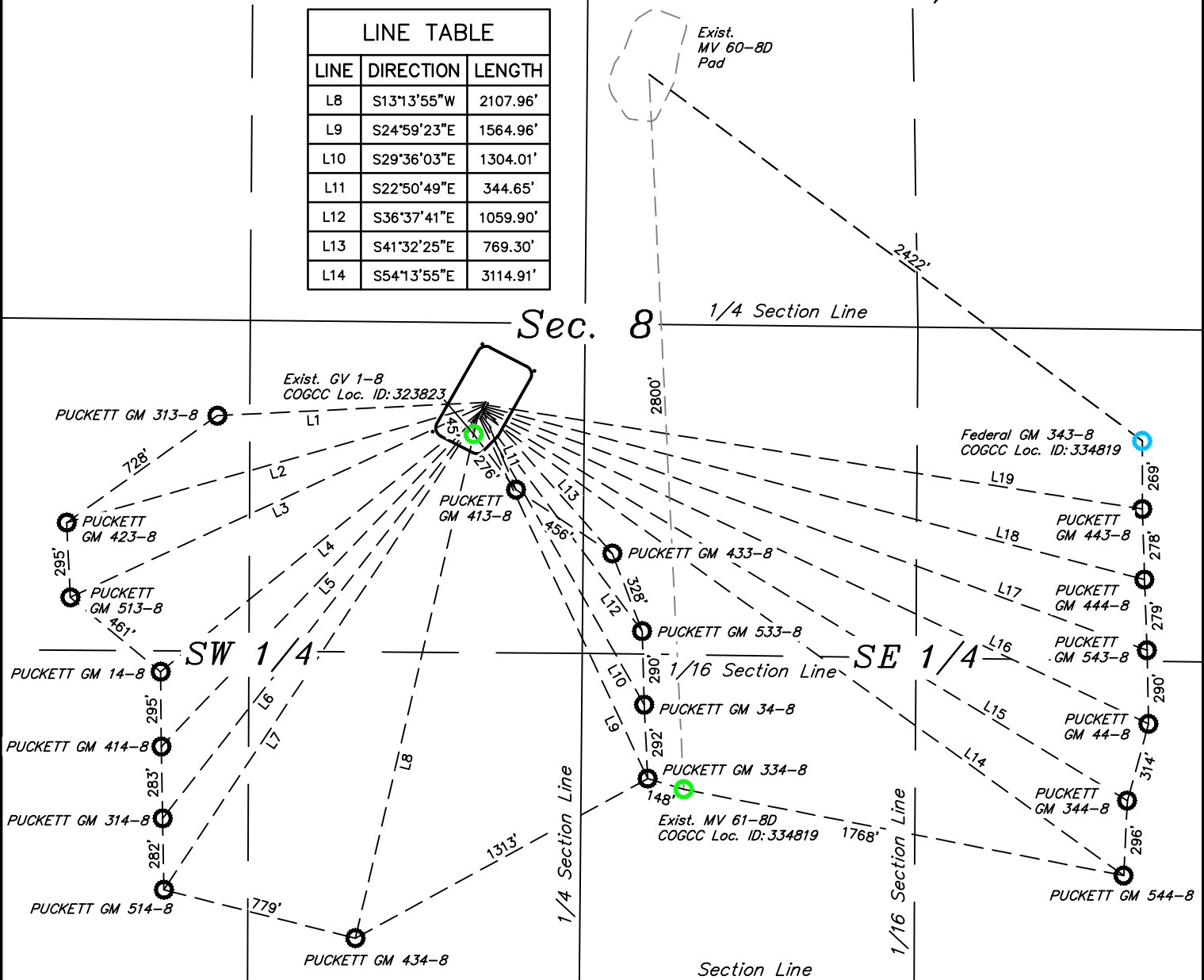
LINE TABLE		
LINE	DIRECTION	LENGTH
L15	S58°53'12"E	2964.43'
L16	S64°43'54"E	2895.45'
L17	S69°56'31"E	2777.62'
L18	S75°18'27"E	2683.24'
L19	S80°59'54"E	2616.30'



NW 1/4

NE 1/4

LINE TABLE		
LINE	DIRECTION	LENGTH
L8	S13°13'55"W	2107.96'
L9	S24°59'23"E	1564.96'
L10	S29°36'03"E	1304.01'
L11	S22°50'49"E	344.65'
L12	S36°37'41"E	1059.90'
L13	S41°32'25"E	769.30'
L14	S54°13'55"E	3114.91'



REV: 1 07-02-18 M.D. (WELL NAME CHANGE & ADD BOTTOM HOLES)

**LEGEND:**  
 ○ = TARGET BOTTOM HOLE.  
 ● = EXISTING BOTTOM HOLE.  
 ○ = PROPOSED TARGET BOTTOM HOLE FROM ANOTHER PAD.

**TEP Rocky Mountain LLC**

**GV 1-8 PAD**  
 NE 1/4 SW 1/4, SECTION 8, T7S, R96W, 6th P.M.  
 GARFIELD COUNTY, COLORADO



**UELS, LLC**  
 Corporate Office \* 85 South 200 East  
 Vernal, UT 84078 \* (435) 789-1017

<b>SURVEYED BY</b>	BART HUNTING	02-28-18	SCALE
<b>DRAWN BY</b>	M.D.	06-15-18	1" = 500'
<b>MULTI-Well PLAN</b>		<b>PLAT #6B</b>	