

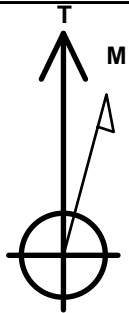
Magpie Operating, Inc.

Well Name: **Campion 5-6 2H**

Surface Location: Campion Pad Sec.5-T4N-R68W
 North American Datum 1983 , US State Plane 1983, Colorado Northern Zone
 Ground Elevation: 5068.0
 +N/-S +E/-W Northing Easting Latitude Longitude Slot
 0.0 0.0 1370042.04 3130698.78 40.348218 -105.031078
 Original Well Elev WELL @ 5084.0ft (Original Well Elev)

WELLBORE TARGET DETAILS

Name	TVD	+N/-S	+E/-W	Shape
SHL 386'FNL, 1820'FWL, SEC.5	1.0	0.0	0.0	Point
BHL 1320'FNL, 1899'FWL, SEC.6	4764.0	-928.1	-5139.5	Point
LPL 1320'FNL, 1932'FEL, SEC.5	5187.0	-936.6	1571.0	Point



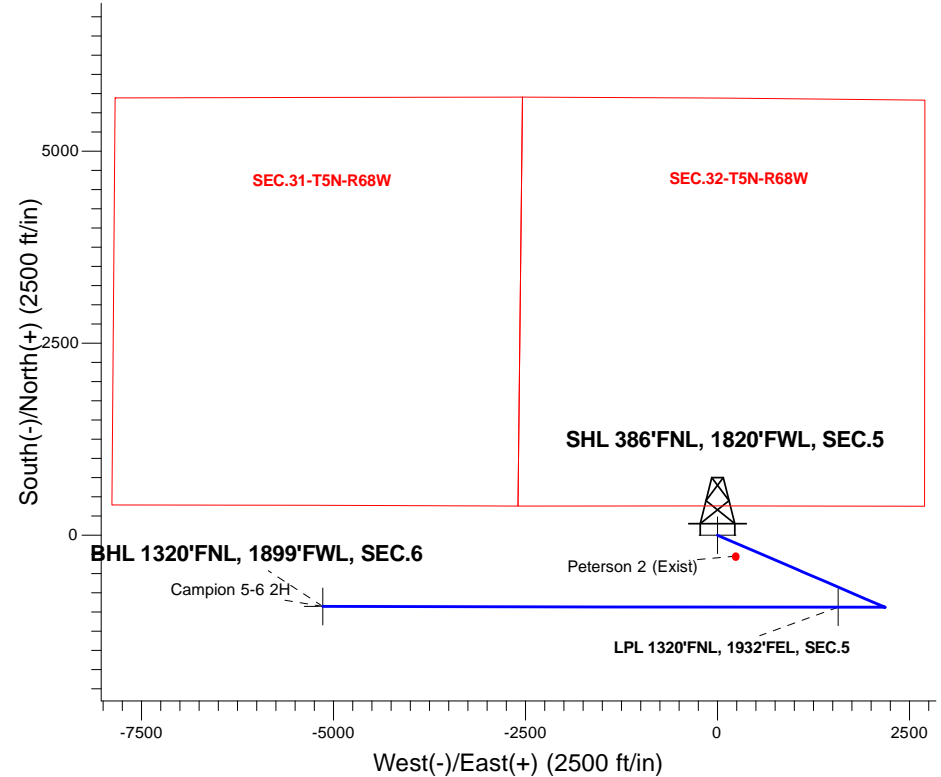
Azimuths to True North
 Magnetic North: 8.47°

Magnetic Field
 Strength: 52261.2snT
 Dip Angle: 66.65°
 Date: 3/2/2018
 Model: HDGM

Campion Pad Sec.5-T4N-R68W
 Campion 5-6 2H
 Plan #1 (2-28-18)
 11:50, March 02 2018

ANNOTATIONS

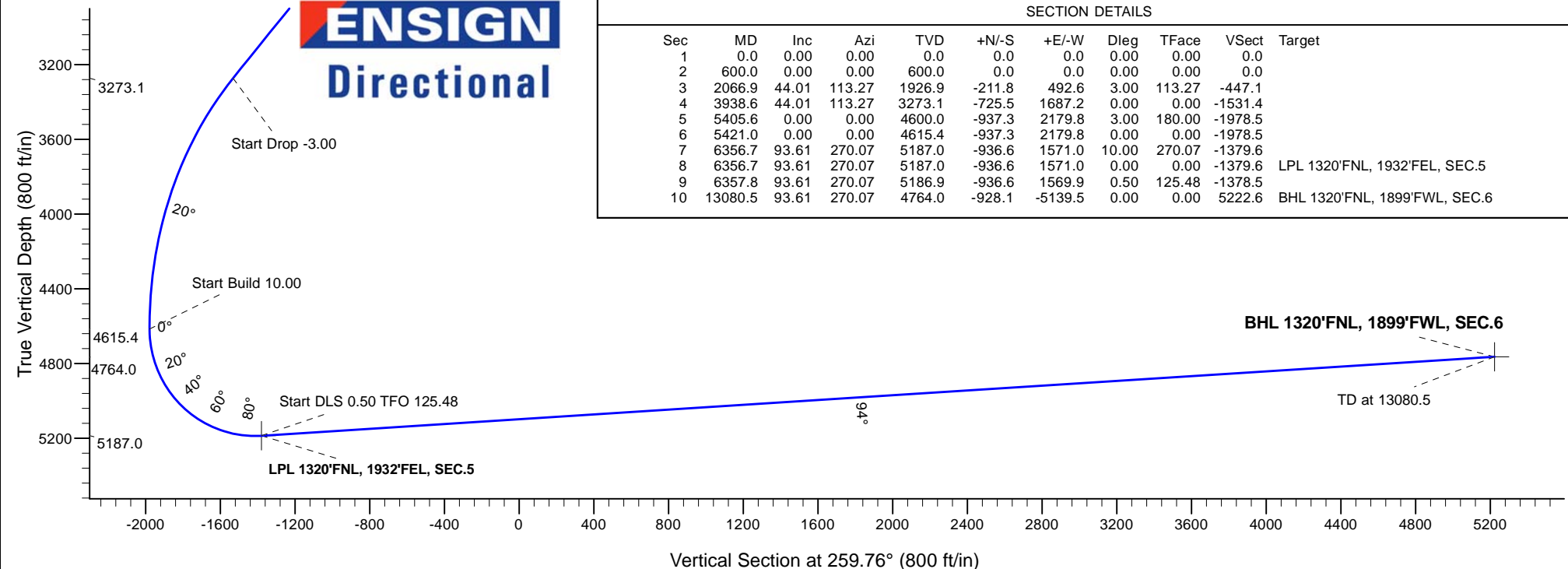
TVD	MD	Annotation
600.0	600.0	KOP - Start Build 3.00
3273.1	3938.6	Start Drop -3.00
4615.4	5421.0	Start Build 10.00
5187.0	6356.7	Start DLS 0.50 TFO 125.48
5186.9	6357.8	Start 6722.8 hold at 6357.8 MD
4764.0	13080.5	TD at 13080.5



ENSIGN
 Directional

SECTION DETAILS

Sec	MD	Inc	Azi	TVD	+N/-S	+E/-W	Dleg	TFace	VSect	Target
1	0.0	0.00	0.00	0.0	0.0	0.0	0.00	0.00	0.0	
2	600.0	0.00	0.00	600.0	0.0	0.0	0.00	0.00	0.0	
3	2066.9	44.01	113.27	1926.9	-211.8	492.6	3.00	113.27	-447.1	
4	3938.6	44.01	113.27	3273.1	-725.5	1687.2	0.00	0.00	-1531.4	
5	5405.6	0.00	0.00	4600.0	-937.3	2179.8	3.00	180.00	-1978.5	
6	5421.0	0.00	0.00	4615.4	-937.3	2179.8	0.00	0.00	-1978.5	
7	6356.7	93.61	270.07	5187.0	-936.6	1571.0	10.00	270.07	-1379.6	
8	6356.7	93.61	270.07	5187.0	-936.6	1571.0	0.00	0.00	-1379.6	LPL 1320'FNL, 1932'FEL, SEC.5
9	6357.8	93.61	270.07	5186.9	-936.6	1569.9	0.50	125.48	-1378.5	
10	13080.5	93.61	270.07	4764.0	-928.1	-5139.5	0.00	0.00	5222.6	BHL 1320'FNL, 1899'FWL, SEC.6





Magpie Operating, Inc.

SEC.5-T4N-R68W

Campion Pad Sec.5-T4N-R68W

Campion 5-6 2H

Wellbore #1

Plan: Plan #1 (2-28-18)

Standard Planning Report

02 March, 2018

Database:	US_EDM	Local Co-ordinate Reference:	Well Campion 5-6 2H
Company:	Magpie Operating, Inc.	TVD Reference:	WELL @ 5084.0ft (Original Well Elev)
Project:	SEC.5-T4N-R68W	MD Reference:	WELL @ 5084.0ft (Original Well Elev)
Site:	Campion Pad Sec.5-T4N-R68W	North Reference:	True
Well:	Campion 5-6 2H	Survey Calculation Method:	Minimum Curvature
Wellbore:	Wellbore #1		
Design:	Plan #1 (2-28-18)		

Project	SEC.5-T4N-R68W, Weld County, CO		
Map System:	US State Plane 1983	System Datum:	Mean Sea Level
Geo Datum:	North American Datum 1983		Using Well Reference Point
Map Zone:	Colorado Northern Zone		Using geodetic scale factor

Site	Campion Pad Sec.5-T4N-R68W				
Site Position:		Northing:	1,370,042.37 usft	Latitude:	40.348218
From:	Lat/Long	Easting:	3,130,758.98 usft	Longitude:	-105.030862
Position Uncertainty:	0.0 ft	Slot Radius:	13-3/16 "	Grid Convergence:	0.30

Well	Campion 5-6 2H					
Well Position	+N/-S	0.0 ft	Northing:	1,370,042.04 usft	Latitude:	40.348218
	+E/-W	-60.2 ft	Easting:	3,130,698.78 usft	Longitude:	-105.031078
Position Uncertainty		0.0 ft	Wellhead Elevation:	0.0 ft	Ground Level:	5,068.0 ft

Wellbore	Wellbore #1				
Magnetics	Model Name	Sample Date	Declination (°)	Dip Angle (°)	Field Strength (nT)
	HDGM	3/2/2018	8.47	66.65	52,261

Design	Plan #1 (2-28-18)			
Audit Notes:				
Version:	Phase:	PROTOTYPE	Tie On Depth:	0.0
Vertical Section:	Depth From (TVD)	+N/-S	+E/-W	Direction
	(ft)	(ft)	(ft)	(°)
	0.0	0.0	0.0	259.76

Plan Sections										
Measured Depth (ft)	Inclination (°)	Azimuth (°)	Vertical Depth (ft)	+N/-S (ft)	+E/-W (ft)	Dogleg Rate (°/100usft)	Build Rate (°/100usft)	Turn Rate (°/100usft)	TFO (°)	Target
0.0	0.00	0.00	0.0	0.0	0.0	0.00	0.00	0.00	0.00	
600.0	0.00	0.00	600.0	0.0	0.0	0.00	0.00	0.00	0.00	
2,066.9	44.01	113.27	1,926.9	-211.8	492.6	3.00	3.00	0.00	113.27	
3,938.6	44.01	113.27	3,273.1	-725.5	1,687.2	0.00	0.00	0.00	0.00	
5,405.6	0.00	0.00	4,600.0	-937.3	2,179.8	3.00	-3.00	0.00	180.00	
5,421.0	0.00	0.00	4,615.4	-937.3	2,179.8	0.00	0.00	0.00	0.00	
6,356.7	93.61	270.07	5,187.0	-936.6	1,571.0	10.00	10.00	0.00	270.07	
6,356.7	93.61	270.07	5,187.0	-936.6	1,571.0	0.00	0.00	0.00	0.00	LPL 1320'FNL, 1932'f
6,357.8	93.61	270.07	5,186.9	-936.6	1,569.9	0.50	-0.29	0.41	125.48	
13,080.5	93.61	270.07	4,764.0	-928.1	-5,139.5	0.00	0.00	0.00	0.00	BHL 1320'FNL, 1899'i

Database:	US_EDM	Local Co-ordinate Reference:	Well Campion 5-6 2H
Company:	Magpie Operating, Inc.	TVD Reference:	WELL @ 5084.0ft (Original Well Elev)
Project:	SEC.5-T4N-R68W	MD Reference:	WELL @ 5084.0ft (Original Well Elev)
Site:	Campion Pad Sec.5-T4N-R68W	North Reference:	True
Well:	Campion 5-6 2H	Survey Calculation Method:	Minimum Curvature
Wellbore:	Wellbore #1		
Design:	Plan #1 (2-28-18)		

Planned Survey									
Measured Depth (ft)	Inclination (°)	Azimuth (°)	Vertical Depth (ft)	+N/-S (ft)	+E/-W (ft)	Vertical Section (ft)	Dogleg Rate (°/100usft)	Build Rate (°/100usft)	Turn Rate (°/100usft)
0.0	0.00	0.00	0.0	0.0	0.0	0.0	0.00	0.00	0.00
1.0	0.00	0.00	1.0	0.0	0.0	0.0	0.00	0.00	0.00
SHL 386'FNL, 1820'FWL, SEC.5									
100.0	0.00	0.00	100.0	0.0	0.0	0.0	0.00	0.00	0.00
200.0	0.00	0.00	200.0	0.0	0.0	0.0	0.00	0.00	0.00
300.0	0.00	0.00	300.0	0.0	0.0	0.0	0.00	0.00	0.00
400.0	0.00	0.00	400.0	0.0	0.0	0.0	0.00	0.00	0.00
500.0	0.00	0.00	500.0	0.0	0.0	0.0	0.00	0.00	0.00
600.0	0.00	0.00	600.0	0.0	0.0	0.0	0.00	0.00	0.00
KOP - Start Build 3.00									
700.0	3.00	113.27	700.0	-1.0	2.4	-2.2	3.00	3.00	0.00
800.0	6.00	113.27	799.6	-4.1	9.6	-8.7	3.00	3.00	0.00
900.0	9.00	113.27	898.8	-9.3	21.6	-19.6	3.00	3.00	0.00
1,000.0	12.00	113.27	997.1	-16.5	38.3	-34.8	3.00	3.00	0.00
1,100.0	15.00	113.27	1,094.3	-25.7	59.8	-54.3	3.00	3.00	0.00
1,200.0	18.00	113.27	1,190.2	-36.9	85.9	-77.9	3.00	3.00	0.00
1,300.0	21.00	113.27	1,284.4	-50.1	116.5	-105.8	3.00	3.00	0.00
1,400.0	24.00	113.27	1,376.8	-65.2	151.7	-137.7	3.00	3.00	0.00
1,500.0	27.00	113.27	1,467.1	-82.2	191.2	-173.6	3.00	3.00	0.00
1,600.0	30.00	113.27	1,554.9	-101.1	235.1	-213.4	3.00	3.00	0.00
1,700.0	33.00	113.27	1,640.2	-121.7	283.1	-256.9	3.00	3.00	0.00
1,800.0	36.00	113.27	1,722.6	-144.1	335.1	-304.1	3.00	3.00	0.00
1,900.0	39.00	113.27	1,801.9	-168.1	391.0	-354.9	3.00	3.00	0.00
2,000.0	42.00	113.27	1,877.9	-193.8	450.7	-409.1	3.00	3.00	0.00
2,066.9	44.01	113.27	1,926.9	-211.8	492.6	-447.1	3.00	3.00	0.00
2,100.0	44.01	113.27	1,950.7	-220.9	513.7	-466.3	0.00	0.00	0.00
2,200.0	44.01	113.27	2,022.6	-248.3	577.5	-524.2	0.00	0.00	0.00
2,300.0	44.01	113.27	2,094.5	-275.8	641.4	-582.1	0.00	0.00	0.00
2,400.0	44.01	113.27	2,166.5	-303.2	705.2	-640.1	0.00	0.00	0.00
2,500.0	44.01	113.27	2,238.4	-330.7	769.0	-698.0	0.00	0.00	0.00
2,600.0	44.01	113.27	2,310.3	-358.1	832.8	-755.9	0.00	0.00	0.00
2,700.0	44.01	113.27	2,382.2	-385.6	896.7	-813.9	0.00	0.00	0.00
2,800.0	44.01	113.27	2,454.2	-413.0	960.5	-871.8	0.00	0.00	0.00
2,900.0	44.01	113.27	2,526.1	-440.4	1,024.3	-929.7	0.00	0.00	0.00
3,000.0	44.01	113.27	2,598.0	-467.9	1,088.1	-987.7	0.00	0.00	0.00
3,100.0	44.01	113.27	2,669.9	-495.3	1,152.0	-1,045.6	0.00	0.00	0.00
3,200.0	44.01	113.27	2,741.8	-522.8	1,215.8	-1,103.5	0.00	0.00	0.00
3,300.0	44.01	113.27	2,813.8	-550.2	1,279.6	-1,161.5	0.00	0.00	0.00
3,400.0	44.01	113.27	2,885.7	-577.7	1,343.4	-1,219.4	0.00	0.00	0.00
3,500.0	44.01	113.27	2,957.6	-605.1	1,407.2	-1,277.3	0.00	0.00	0.00
3,600.0	44.01	113.27	3,029.5	-632.6	1,471.1	-1,335.3	0.00	0.00	0.00
3,700.0	44.01	113.27	3,101.5	-660.0	1,534.9	-1,393.2	0.00	0.00	0.00
3,800.0	44.01	113.27	3,173.4	-687.4	1,598.7	-1,451.1	0.00	0.00	0.00
3,900.0	44.01	113.27	3,245.3	-714.9	1,662.5	-1,509.1	0.00	0.00	0.00
3,938.6	44.01	113.27	3,273.1	-725.5	1,687.2	-1,531.4	0.00	0.00	0.00
Start Drop -3.00									
4,000.0	42.17	113.27	3,317.9	-742.0	1,725.7	-1,566.4	3.00	-3.00	0.00
4,100.0	39.17	113.27	3,393.8	-767.8	1,785.6	-1,620.7	3.00	-3.00	0.00
4,200.0	36.17	113.27	3,472.9	-791.9	1,841.7	-1,671.7	3.00	-3.00	0.00
4,300.0	33.17	113.27	3,555.2	-814.4	1,894.0	-1,719.1	3.00	-3.00	0.00
4,400.0	30.17	113.27	3,640.3	-835.1	1,942.2	-1,762.9	3.00	-3.00	0.00
4,500.0	27.17	113.27	3,728.0	-854.1	1,986.2	-1,802.9	3.00	-3.00	0.00
4,600.0	24.17	113.27	3,818.1	-871.2	2,026.0	-1,839.0	3.00	-3.00	0.00

Database:	US_EDM	Local Co-ordinate Reference:	Well Campion 5-6 2H
Company:	Magpie Operating, Inc.	TVD Reference:	WELL @ 5084.0ft (Original Well Elev)
Project:	SEC.5-T4N-R68W	MD Reference:	WELL @ 5084.0ft (Original Well Elev)
Site:	Campion Pad Sec.5-T4N-R68W	North Reference:	True
Well:	Campion 5-6 2H	Survey Calculation Method:	Minimum Curvature
Wellbore:	Wellbore #1		
Design:	Plan #1 (2-28-18)		

Planned Survey									
Measured Depth (ft)	Inclination (°)	Azimuth (°)	Vertical Depth (ft)	+N/-S (ft)	+E/-W (ft)	Vertical Section (ft)	Dogleg Rate (°/100usft)	Build Rate (°/100usft)	Turn Rate (°/100usft)
4,700.0	21.17	113.27	3,910.4	-886.4	2,061.4	-1,871.1	3.00	-3.00	0.00
4,800.0	18.17	113.27	4,004.5	-899.7	2,092.3	-1,899.2	3.00	-3.00	0.00
4,900.0	15.17	113.27	4,100.3	-911.0	2,118.7	-1,923.1	3.00	-3.00	0.00
5,000.0	12.17	113.27	4,197.5	-920.4	2,140.4	-1,942.8	3.00	-3.00	0.00
5,100.0	9.17	113.27	4,295.7	-927.7	2,157.4	-1,958.2	3.00	-3.00	0.00
5,200.0	6.17	113.27	4,394.8	-932.9	2,169.6	-1,969.3	3.00	-3.00	0.00
5,300.0	3.17	113.27	4,494.5	-936.1	2,177.1	-1,976.1	3.00	-3.00	0.00
5,400.0	0.17	113.27	4,594.4	-937.3	2,179.8	-1,978.5	3.00	-3.00	0.00
5,405.6	0.00	0.00	4,600.0	-937.3	2,179.8	-1,978.5	3.00	-3.00	0.00
5,421.0	0.00	0.00	4,615.4	-937.3	2,179.8	-1,978.5	0.00	0.00	0.00
Start Build 10.00									
5,500.0	7.91	270.07	4,694.2	-937.3	2,174.4	-1,973.2	10.01	10.01	0.00
5,600.0	17.91	270.07	4,791.5	-937.3	2,152.0	-1,951.2	10.00	10.00	0.00
5,700.0	27.91	270.07	4,883.5	-937.2	2,113.2	-1,913.0	10.00	10.00	0.00
5,800.0	37.92	270.07	4,967.4	-937.2	2,058.9	-1,859.6	10.00	10.00	0.00
5,900.0	47.92	270.07	5,040.5	-937.1	1,990.9	-1,792.7	10.00	10.00	0.00
6,000.0	57.93	270.07	5,100.7	-937.0	1,911.2	-1,714.3	10.00	10.00	0.00
6,100.0	67.93	270.07	5,146.2	-936.9	1,822.3	-1,626.8	10.00	10.00	0.00
6,200.0	77.93	270.07	5,175.5	-936.8	1,726.8	-1,532.8	10.00	10.00	0.00
6,300.0	87.94	270.07	5,187.8	-936.6	1,627.7	-1,435.3	10.00	10.00	0.00
6,356.7	93.61	270.07	5,187.0	-936.6	1,571.0	-1,379.6	10.00	10.00	0.00
Start DLS 0.50 TFO 125.48 - LPL 1320'FNL, 1932'FEL, SEC.5									
6,357.8	93.61	270.07	5,186.9	-936.6	1,569.9	-1,378.5	0.46	-0.23	0.40
Start 6722.8 hold at 6357.8 MD									
6,400.0	93.61	270.07	5,184.3	-936.5	1,527.8	-1,337.1	0.00	0.00	0.00
6,500.0	93.61	270.07	5,178.0	-936.4	1,428.0	-1,238.9	0.00	0.00	0.00
6,600.0	93.61	270.07	5,171.7	-936.3	1,328.2	-1,140.7	0.00	0.00	0.00
6,700.0	93.61	270.07	5,165.4	-936.1	1,228.4	-1,042.5	0.00	0.00	0.00
6,800.0	93.61	270.07	5,159.1	-936.0	1,128.6	-944.3	0.00	0.00	0.00
6,900.0	93.61	270.07	5,152.8	-935.9	1,028.8	-846.1	0.00	0.00	0.00
7,000.0	93.61	270.07	5,146.5	-935.8	929.0	-747.9	0.00	0.00	0.00
7,100.0	93.61	270.07	5,140.2	-935.6	829.2	-649.7	0.00	0.00	0.00
7,200.0	93.61	270.07	5,133.9	-935.5	729.4	-551.5	0.00	0.00	0.00
7,300.0	93.61	270.07	5,127.7	-935.4	629.6	-453.3	0.00	0.00	0.00
7,400.0	93.61	270.07	5,121.4	-935.3	529.8	-355.1	0.00	0.00	0.00
7,500.0	93.61	270.07	5,115.1	-935.1	430.0	-257.0	0.00	0.00	0.00
7,600.0	93.61	270.07	5,108.8	-935.0	330.2	-158.8	0.00	0.00	0.00
7,700.0	93.61	270.07	5,102.5	-934.9	230.4	-60.6	0.00	0.00	0.00
7,800.0	93.61	270.07	5,096.2	-934.8	130.6	37.6	0.00	0.00	0.00
7,900.0	93.61	270.07	5,089.9	-934.6	30.8	135.8	0.00	0.00	0.00
8,000.0	93.61	270.07	5,083.6	-934.5	-69.0	234.0	0.00	0.00	0.00
8,100.0	93.61	270.07	5,077.3	-934.4	-168.8	332.2	0.00	0.00	0.00
8,200.0	93.61	270.07	5,071.0	-934.2	-268.6	430.4	0.00	0.00	0.00
8,300.0	93.61	270.07	5,064.7	-934.1	-368.4	528.6	0.00	0.00	0.00
8,400.0	93.61	270.07	5,058.5	-934.0	-468.2	626.8	0.00	0.00	0.00
8,500.0	93.61	270.07	5,052.2	-933.9	-568.0	725.0	0.00	0.00	0.00
8,600.0	93.61	270.07	5,045.9	-933.7	-667.8	823.1	0.00	0.00	0.00
8,700.0	93.61	270.07	5,039.6	-933.6	-767.7	921.3	0.00	0.00	0.00
8,800.0	93.61	270.07	5,033.3	-933.5	-867.5	1,019.5	0.00	0.00	0.00
8,900.0	93.61	270.07	5,027.0	-933.4	-967.3	1,117.7	0.00	0.00	0.00
9,000.0	93.61	270.07	5,020.7	-933.2	-1,067.1	1,215.9	0.00	0.00	0.00
9,100.0	93.61	270.07	5,014.4	-933.1	-1,166.9	1,314.1	0.00	0.00	0.00
9,200.0	93.61	270.07	5,008.1	-933.0	-1,266.7	1,412.3	0.00	0.00	0.00

Database:	US_EDM	Local Co-ordinate Reference:	Well Campion 5-6 2H
Company:	Magpie Operating, Inc.	TVD Reference:	WELL @ 5084.0ft (Original Well Elev)
Project:	SEC.5-T4N-R68W	MD Reference:	WELL @ 5084.0ft (Original Well Elev)
Site:	Campion Pad Sec.5-T4N-R68W	North Reference:	True
Well:	Campion 5-6 2H	Survey Calculation Method:	Minimum Curvature
Wellbore:	Wellbore #1		
Design:	Plan #1 (2-28-18)		

Planned Survey										
Measured Depth (ft)	Inclination (°)	Azimuth (°)	Vertical Depth (ft)	+N/-S (ft)	+E/-W (ft)	Vertical Section (ft)	Dogleg Rate (°/100usft)	Build Rate (°/100usft)	Turn Rate (°/100usft)	
9,300.0	93.61	270.07	5,001.8	-932.9	-1,366.5	1,510.5	0.00	0.00	0.00	
9,400.0	93.61	270.07	4,995.5	-932.7	-1,466.3	1,608.7	0.00	0.00	0.00	
9,500.0	93.61	270.07	4,989.3	-932.6	-1,566.1	1,706.9	0.00	0.00	0.00	
9,600.0	93.61	270.07	4,983.0	-932.5	-1,665.9	1,805.1	0.00	0.00	0.00	
9,700.0	93.61	270.07	4,976.7	-932.3	-1,765.7	1,903.2	0.00	0.00	0.00	
9,800.0	93.61	270.07	4,970.4	-932.2	-1,865.5	2,001.4	0.00	0.00	0.00	
9,900.0	93.61	270.07	4,964.1	-932.1	-1,965.3	2,099.6	0.00	0.00	0.00	
10,000.0	93.61	270.07	4,957.8	-932.0	-2,065.1	2,197.8	0.00	0.00	0.00	
10,100.0	93.61	270.07	4,951.5	-931.8	-2,164.9	2,296.0	0.00	0.00	0.00	
10,200.0	93.61	270.07	4,945.2	-931.7	-2,264.7	2,394.2	0.00	0.00	0.00	
10,300.0	93.61	270.07	4,938.9	-931.6	-2,364.5	2,492.4	0.00	0.00	0.00	
10,400.0	93.61	270.07	4,932.6	-931.5	-2,464.3	2,590.6	0.00	0.00	0.00	
10,500.0	93.61	270.07	4,926.3	-931.3	-2,564.1	2,688.8	0.00	0.00	0.00	
10,600.0	93.61	270.07	4,920.1	-931.2	-2,663.9	2,787.0	0.00	0.00	0.00	
10,700.0	93.61	270.07	4,913.8	-931.1	-2,763.7	2,885.2	0.00	0.00	0.00	
10,800.0	93.61	270.07	4,907.5	-931.0	-2,863.5	2,983.3	0.00	0.00	0.00	
10,900.0	93.61	270.07	4,901.2	-930.8	-2,963.3	3,081.5	0.00	0.00	0.00	
11,000.0	93.61	270.07	4,894.9	-930.7	-3,063.1	3,179.7	0.00	0.00	0.00	
11,100.0	93.61	270.07	4,888.6	-930.6	-3,162.9	3,277.9	0.00	0.00	0.00	
11,200.0	93.61	270.07	4,882.3	-930.5	-3,262.7	3,376.1	0.00	0.00	0.00	
11,300.0	93.61	270.07	4,876.0	-930.3	-3,362.5	3,474.3	0.00	0.00	0.00	
11,400.0	93.61	270.07	4,869.7	-930.2	-3,462.3	3,572.5	0.00	0.00	0.00	
11,500.0	93.61	270.07	4,863.4	-930.1	-3,562.1	3,670.7	0.00	0.00	0.00	
11,600.0	93.61	270.07	4,857.1	-929.9	-3,661.9	3,768.9	0.00	0.00	0.00	
11,700.0	93.61	270.07	4,850.9	-929.8	-3,761.7	3,867.1	0.00	0.00	0.00	
11,800.0	93.61	270.07	4,844.6	-929.7	-3,861.5	3,965.3	0.00	0.00	0.00	
11,900.0	93.61	270.07	4,838.3	-929.6	-3,961.3	4,063.4	0.00	0.00	0.00	
12,000.0	93.61	270.07	4,832.0	-929.4	-4,061.1	4,161.6	0.00	0.00	0.00	
12,100.0	93.61	270.07	4,825.7	-929.3	-4,160.9	4,259.8	0.00	0.00	0.00	
12,200.0	93.61	270.07	4,819.4	-929.2	-4,260.7	4,358.0	0.00	0.00	0.00	
12,300.0	93.61	270.07	4,813.1	-929.1	-4,360.5	4,456.2	0.00	0.00	0.00	
12,400.0	93.61	270.07	4,806.8	-928.9	-4,460.3	4,554.4	0.00	0.00	0.00	
12,500.0	93.61	270.07	4,800.5	-928.8	-4,560.1	4,652.6	0.00	0.00	0.00	
12,600.0	93.61	270.07	4,794.2	-928.7	-4,659.9	4,750.8	0.00	0.00	0.00	
12,700.0	93.61	270.07	4,787.9	-928.6	-4,759.7	4,849.0	0.00	0.00	0.00	
12,800.0	93.61	270.07	4,781.6	-928.4	-4,859.5	4,947.2	0.00	0.00	0.00	
12,900.0	93.61	270.07	4,775.4	-928.3	-4,959.3	5,045.4	0.00	0.00	0.00	
13,000.0	93.61	270.07	4,769.1	-928.2	-5,059.1	5,143.5	0.00	0.00	0.00	
13,080.5	93.61	270.07	4,764.0	-928.1	-5,139.5	5,222.6	0.00	0.00	0.00	
TD at 13080.5 - BHL 1320'FNL, 1899'FWL, SEC.6										

Database:	US_EDM	Local Co-ordinate Reference:	Well Campion 5-6 2H
Company:	Magpie Operating, Inc.	TVD Reference:	WELL @ 5084.0ft (Original Well Elev)
Project:	SEC.5-T4N-R68W	MD Reference:	WELL @ 5084.0ft (Original Well Elev)
Site:	Campion Pad Sec.5-T4N-R68W	North Reference:	True
Well:	Campion 5-6 2H	Survey Calculation Method:	Minimum Curvature
Wellbore:	Wellbore #1		
Design:	Plan #1 (2-28-18)		

Design Targets									
Target Name	Dip Angle	Dip Dir.	TVD	+N/-S	+E/-W	Northing	Easting	Latitude	Longitude
- hit/miss target	(°)	(°)	(ft)	(ft)	(ft)	(usft)	(usft)		
- Shape									
SHL 386'FNL, 1820'FWL - plan hits target center - Point	0.00	0.00	1.0	0.0	0.0	1,370,042.05	3,130,698.78	40.348218	-105.031078
BHL 1320'FNL, 1899'FW - plan hits target center - Point	0.00	0.00	4,764.0	-928.1	-5,139.5	1,369,086.84	3,125,564.47	40.345669	-105.049516
LPL 1320'FNL, 1932'FEI - plan hits target center - Point	0.00	0.00	5,187.0	-936.6	1,571.0	1,369,113.82	3,132,274.65	40.345647	-105.025442

Plan Annotations				
Measured Depth	Vertical Depth	Local Coordinates		Comment
(ft)	(ft)	+N/-S (ft)	+E/-W (ft)	
600.0	600.0	0.0	0.0	KOP - Start Build 3.00
3,938.6	3,273.1	-211.8	492.6	Start Drop -3.00
5,421.0	4,615.4	-725.5	1,687.2	Start Build 10.00
6,356.7	5,187.0	-937.3	2,179.8	Start DLS 0.50 TFO 125.48
6,357.8	5,186.9	-937.3	2,179.8	Start 6722.8 hold at 6357.8 MD
13,080.5	4,764.0	-936.6	1,571.0	TD at 13080.5



Magpie Operating, Inc.

SEC.5-T4N-R68W

Campion Pad Sec.5-T4N-R68W

Campion 5-6 2H

Wellbore #1

Plan #1 (2-28-18)

Anticollision Report

02 March, 2018

Company:	Maggie Operating, Inc.	Local Co-ordinate Reference:	Well Campion 5-6 2H
Project:	SEC.5-T4N-R68W	TVD Reference:	WELL @ 5084.0ft (Original Well Elev)
Reference Site:	Campion Pad Sec.5-T4N-R68W	MD Reference:	WELL @ 5084.0ft (Original Well Elev)
Site Error:	0.0 ft	North Reference:	True
Reference Well:	Campion 5-6 2H	Survey Calculation Method:	Minimum Curvature
Well Error:	0.0 ft	Output errors are at	2.45 sigma
Reference Wellbore	Wellbore #1	Database:	US_EDM
Reference Design:	Plan #1 (2-28-18)	Offset TVD Reference:	Offset Datum

Reference	Plan #1 (2-28-18)		
Filter type:	NO GLOBAL FILTER: Using user defined selection & filtering criteria		
Interpolation Method:	Stations	Error Model:	ISCWSA
Depth Range:	Unlimited	Scan Method:	Closest Approach 3D
Results Limited by:	Maximum center-center distance of 800.0 ft	Error Surface:	Elliptical Conic
Warning Levels Evaluated at:	2.45 Sigma	Casing Method:	Not applied

Survey Tool Program	Date 3/2/2018			
From (ft)	To (ft)	Survey (Wellbore)	Tool Name	Description
0.0	13,080.5	Plan #1 (2-28-18) (Wellbore #1)	MWD	MWD - Standard

Summary						
Site Name	Reference Measured Depth (ft)	Offset Measured Depth (ft)	Distance Between Centres (ft)	Distance Between Ellipses (ft)	Separation Factor	Warning
Offset Well - Wellbore - Design						
Campion Pad Sec.5-T4N-R68W						
Campion 32-31 1H - Wellbore #1 - Plan #1 (2-28-18)	400.0	400.0	30.1	28.2	15.619	CC, ES
Campion 32-31 1H - Wellbore #1 - Plan #1 (2-28-18)	600.0	596.7	39.2	36.2	12.975	SF
Campion 5-6 1H - Wellbore #1 - Plan #1 (2-28-18)	200.0	200.0	60.2	59.4	72.888	CC, ES
Campion 5-6 1H - Wellbore #1 - Plan #1 (2-28-18)	3,200.0	2,942.8	784.7	715.8	11.387	SF
Existing Wells Sec.5, 6, 31, 32-T4N-R68W						
Peterson 2 (Exist) - Wellbore #1 - Wellbore #1	1,733.1	1,651.8	155.1	105.2	3.108	CC, ES
Peterson 2 (Exist) - Wellbore #1 - Wellbore #1	1,800.0	1,706.6	159.7	107.9	3.082	SF

Offset Design													Offset Site Error:	0.0 ft
Campion Pad Sec.5-T4N-R68W - Campion 32-31 1H - Wellbore #1 - Plan #1 (2-28-18)													Offset Well Error:	0.0 ft
Survey Program: 0-MWD														
Reference		Offset		Semi Major Axis			Distance							
Measured Depth (ft)	Vertical Depth (ft)	Measured Depth (ft)	Vertical Depth (ft)	Reference (ft)	Offset (ft)	Highside Toolface (°)	Offset Wellbore Centre +N/-S (ft)	Offset Wellbore Centre +E/-W (ft)	Between Centres (ft)	Between Ellipses (ft)	Minimum Separation (ft)	Separation Factor	Warning	
0.0	0.0	0.0	0.0	0.0	0.0	90.02	0.0	30.1	30.1					
100.0	100.0	100.0	100.0	0.1	0.1	90.02	0.0	30.1	30.1	29.8	0.28	109.332		
200.0	200.0	200.0	200.0	0.4	0.4	90.02	0.0	30.1	30.1	29.3	0.83	36.444		
300.0	300.0	300.0	300.0	0.7	0.7	90.02	0.0	30.1	30.1	28.7	1.38	21.866		
400.0	400.0	400.0	400.0	1.0	1.0	90.02	0.0	30.1	30.1	28.2	1.93	15.619	CC, ES	
500.0	500.0	498.6	498.6	1.2	1.2	87.59	1.4	32.2	32.3	29.8	2.47	13.087		
600.0	600.0	596.7	596.3	1.5	1.5	82.00	5.4	38.6	39.2	36.2	3.02	12.975	SF	
700.0	700.0	693.9	692.7	1.8	1.8	-38.76	12.1	49.1	49.1	45.5	3.56	13.797		
800.0	799.6	790.1	787.4	2.0	2.2	-47.77	21.3	63.6	60.9	56.8	4.10	14.868		
900.0	898.8	884.9	879.7	2.3	2.7	-56.70	32.9	81.7	75.9	71.2	4.69	16.180		
1,000.0	997.1	978.2	969.4	2.7	3.2	-64.60	46.7	103.3	94.8	89.4	5.39	17.578		
1,100.0	1,094.3	1,069.6	1,055.9	3.2	3.9	-71.14	62.4	128.1	117.9	111.7	6.26	18.848		
1,200.0	1,190.2	1,158.9	1,139.1	3.8	4.6	-76.36	80.0	155.6	145.4	138.1	7.32	19.861		
1,300.0	1,284.4	1,246.1	1,218.7	4.5	5.4	-80.43	99.1	185.6	177.1	168.5	8.60	20.600		
1,400.0	1,376.8	1,331.1	1,294.6	5.4	6.3	-83.55	119.6	217.7	212.8	202.7	10.07	21.122		
1,500.0	1,467.1	1,413.6	1,366.7	6.4	7.3	-85.92	141.2	251.6	252.3	240.6	11.75	21.470		
1,600.0	1,554.9	1,493.7	1,434.9	7.6	8.3	-87.67	163.8	287.0	295.4	281.8	13.62	21.694		
1,700.0	1,640.2	1,571.3	1,499.3	8.9	9.4	-88.92	187.1	323.6	341.9	326.2	15.67	21.822		
1,800.0	1,722.6	1,646.5	1,559.9	10.4	10.5	-89.75	211.0	361.1	391.5	373.6	17.88	21.897		
1,900.0	1,801.9	1,719.3	1,616.8	12.1	11.7	-90.23	235.4	399.3	444.0	423.8	20.24	21.936		

CC - Min centre to center distance or convergent point, SF - min separation factor, ES - min ellipse separation

Company:	Maggie Operating, Inc.	Local Co-ordinate Reference:	Well Campion 5-6 2H
Project:	SEC.5-T4N-R68W	TVD Reference:	WELL @ 5084.0ft (Original Well Elev)
Reference Site:	Campion Pad Sec.5-T4N-R68W	MD Reference:	WELL @ 5084.0ft (Original Well Elev)
Site Error:	0.0 ft	North Reference:	True
Reference Well:	Campion 5-6 2H	Survey Calculation Method:	Minimum Curvature
Well Error:	0.0 ft	Output errors are at	2.45 sigma
Reference Wellbore	Wellbore #1	Database:	US_EDM
Reference Design:	Plan #1 (2-28-18)	Offset TVD Reference:	Offset Datum

Offset Design												Offset Site Error:	0.0 ft
Campion Pad Sec.5-T4N-R68W - Campion 32-31 1H - Wellbore #1 - Plan #1 (2-28-18)												Offset Well Error:	0.0 ft
Survey Program: 0-MWD													
Reference		Offset		Semi Major Axis			Distance						Warning
Measured Depth (ft)	Vertical Depth (ft)	Measured Depth (ft)	Vertical Depth (ft)	Reference (ft)	Offset (ft)	Highside Toolface (°)	Offset Wellbore Centre +N/-S (ft)	+E/-W (ft)	Between Centres (ft)	Between Ellipses (ft)	Minimum Separation (ft)	Separation Factor	
2,000.0	1,877.9	1,789.6	1,670.2	13.9	12.9	-90.41	260.0	437.9	499.2	476.5	22.75	21.940	
2,066.9	1,926.9	1,835.4	1,704.1	15.2	13.7	-90.38	276.6	463.9	537.6	513.1	24.52	21.924	
2,100.0	1,950.7	1,857.7	1,720.3	15.8	14.1	-91.01	284.9	476.9	557.0	531.5	25.47	21.872	
2,200.0	2,022.6	1,924.3	1,767.6	17.8	15.3	-92.56	310.0	516.4	616.9	588.6	28.32	21.783	
2,300.0	2,094.5	1,989.5	1,812.2	19.8	16.6	-93.66	335.5	556.3	678.7	647.5	31.18	21.767	
2,400.0	2,166.5	2,053.1	1,854.3	21.9	17.9	-94.40	361.2	596.6	742.1	708.0	34.05	21.794	

Company:	Maggie Operating, Inc.	Local Co-ordinate Reference:	Well Campion 5-6 2H
Project:	SEC.5-T4N-R68W	TVD Reference:	WELL @ 5084.0ft (Original Well Elev)
Reference Site:	Campion Pad Sec.5-T4N-R68W	MD Reference:	WELL @ 5084.0ft (Original Well Elev)
Site Error:	0.0 ft	North Reference:	True
Reference Well:	Campion 5-6 2H	Survey Calculation Method:	Minimum Curvature
Well Error:	0.0 ft	Output errors are at	2.45 sigma
Reference Wellbore	Wellbore #1	Database:	US_EDM
Reference Design:	Plan #1 (2-28-18)	Offset TVD Reference:	Offset Datum

Offset Design													Offset Site Error:	0.0 ft
Survey Program: 0-MWD													Offset Well Error:	0.0 ft
Reference		Offset		Semi Major Axis			Distance							Warning
Measured Depth (ft)	Vertical Depth (ft)	Measured Depth (ft)	Vertical Depth (ft)	Reference (ft)	Offset (ft)	Highside Toolface (°)	Offset Wellbore Centre +N/-S (ft)	+E/-W (ft)	Between Centres (ft)	Between Ellipses (ft)	Minimum Separation (ft)	Separation Factor		
0.0	0.0	0.0	0.0	0.0	0.0	89.99	0.0	60.2	60.2					
100.0	100.0	100.0	100.0	0.1	0.1	89.99	0.0	60.2	60.2	59.9	0.28	218.665		
200.0	200.0	200.0	200.0	0.4	0.4	89.99	0.0	60.2	60.2	59.4	0.83	72.888 CC, ES		
300.0	300.0	296.9	296.9	0.7	0.7	89.58	0.5	62.6	62.7	61.3	1.36	46.094		
400.0	400.0	393.3	393.0	1.0	1.0	88.54	1.8	69.8	70.2	68.3	1.91	36.662		
500.0	500.0	488.8	487.7	1.2	1.3	87.23	4.0	81.6	82.7	80.1	2.52	32.804		
600.0	600.0	582.8	580.2	1.5	1.7	85.94	6.9	97.8	100.0	96.8	3.19	31.373		
700.0	700.0	675.4	670.5	1.8	2.2	-28.71	10.7	118.1	120.0	116.3	3.61	33.187		
800.0	799.6	766.9	758.6	2.0	2.8	-30.73	15.1	142.4	140.3	136.1	4.17	33.628		
900.0	898.8	857.3	844.4	2.3	3.5	-33.08	20.3	170.4	161.1	156.3	4.77	33.774		
1,000.0	997.1	946.5	927.6	2.7	4.2	-35.59	26.1	201.9	182.7	177.3	5.43	33.635		
1,100.0	1,094.3	1,034.4	1,008.2	3.2	5.1	-38.15	32.5	236.6	205.2	199.0	6.19	33.167		
1,200.0	1,190.2	1,121.1	1,085.8	3.8	6.1	-40.68	39.5	274.5	228.7	221.6	7.07	32.345		
1,300.0	1,284.4	1,206.5	1,160.6	4.5	7.1	-43.14	47.0	315.1	253.3	245.2	8.12	31.215		
1,400.0	1,376.8	1,290.6	1,232.3	5.4	8.3	-45.48	54.9	358.2	279.2	269.9	9.38	29.784		
1,500.0	1,467.1	1,373.5	1,301.0	6.4	9.5	-47.69	63.3	403.7	306.4	295.6	10.87	28.192		
1,600.0	1,554.9	1,460.4	1,371.1	7.6	10.9	-49.95	72.6	454.3	334.7	322.0	12.67	26.406		
1,700.0	1,640.2	1,554.8	1,446.8	8.9	12.4	-52.59	82.8	509.7	361.3	346.5	14.88	24.287		
1,800.0	1,722.6	1,649.0	1,522.5	10.4	14.0	-55.42	93.0	565.0	386.2	368.7	17.45	22.132		
1,900.0	1,801.9	1,742.9	1,597.8	12.1	15.5	-58.43	103.2	620.1	409.6	389.2	20.39	20.083		
2,000.0	1,877.9	1,836.1	1,672.6	13.9	17.1	-61.61	113.2	674.8	432.1	408.4	23.71	18.223		
2,066.9	1,926.9	1,898.1	1,722.3	15.2	18.1	-63.82	119.9	711.2	446.9	420.7	26.12	17.107		
2,100.0	1,950.7	1,928.6	1,746.8	15.8	18.6	-65.10	123.2	729.1	454.3	426.9	27.37	16.597		
2,200.0	2,022.6	2,020.8	1,820.7	17.8	20.1	-68.77	133.2	783.2	478.1	446.9	31.20	15.326		
2,300.0	2,094.5	2,113.0	1,894.7	19.8	21.7	-72.11	143.2	837.3	503.8	468.8	35.06	14.370		
2,400.0	2,166.5	2,205.2	1,968.7	21.9	23.2	-75.14	153.1	891.4	531.1	492.2	38.93	13.641		
2,500.0	2,238.4	2,297.4	2,042.7	23.9	24.8	-77.89	163.1	945.5	559.7	516.9	42.79	13.079		
2,600.0	2,310.3	2,389.6	2,116.7	25.9	26.3	-80.38	173.1	999.7	589.5	542.9	46.63	12.642		
2,700.0	2,382.2	2,481.8	2,190.6	28.0	27.9	-82.65	183.1	1,053.8	620.3	569.8	50.43	12.299		
2,800.0	2,454.2	2,574.0	2,264.6	30.0	29.4	-84.71	193.0	1,107.9	651.9	597.7	54.20	12.028		
2,900.0	2,526.1	2,666.2	2,338.6	32.1	31.0	-86.59	203.0	1,162.0	684.2	626.3	57.93	11.811		
3,000.0	2,598.0	2,758.4	2,412.6	34.1	32.5	-88.31	213.0	1,216.1	717.2	655.6	61.62	11.638		
3,100.0	2,669.9	2,850.6	2,486.6	36.2	34.0	-89.88	222.9	1,270.3	750.7	685.4	65.28	11.499		
3,200.0	2,741.8	2,942.8	2,560.6	38.2	35.6	-91.32	232.9	1,324.4	784.7	715.8	68.91	11.387 SF		

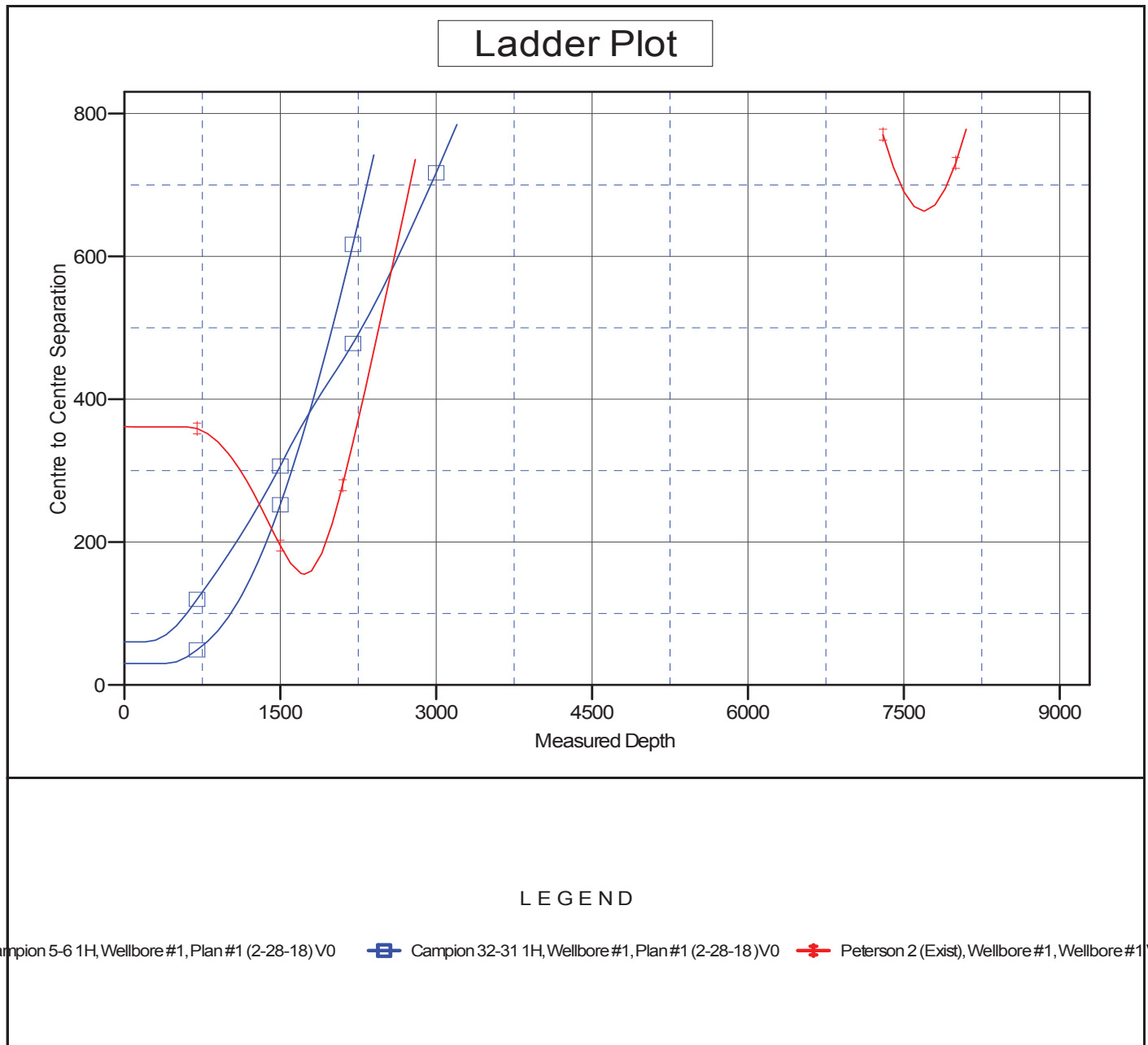
Company:	Magpie Operating, Inc.	Local Co-ordinate Reference:	Well Campion 5-6 2H
Project:	SEC.5-T4N-R68W	TVD Reference:	WELL @ 5084.0ft (Original Well Elev)
Reference Site:	Campion Pad Sec.5-T4N-R68W	MD Reference:	WELL @ 5084.0ft (Original Well Elev)
Site Error:	0.0 ft	North Reference:	True
Reference Well:	Campion 5-6 2H	Survey Calculation Method:	Minimum Curvature
Well Error:	0.0 ft	Output errors are at	2.45 sigma
Reference Wellbore	Wellbore #1	Database:	US_EDM
Reference Design:	Plan #1 (2-28-18)	Offset TVD Reference:	Offset Datum

Offset Design Existing Wells Sec.5, 6, 31, 32-T4N-R68W - Peterson 2 (Exist) - Wellbore #1 - Wellbore #1													Offset Site Error:	0.0 ft
Survey Program: 5675-UNKNOWN													Offset Well Error:	0.0 ft
Reference		Offset		Semi Major Axis			Distance							Warning
Measured Depth (ft)	Vertical Depth (ft)	Measured Depth (ft)	Vertical Depth (ft)	Reference (ft)	Offset (ft)	Highside Toolface (°)	Offset Wellbore Centre +N/-S (ft)	+E/-W (ft)	Between Centres (ft)	Between Ellipses (ft)	Minimum Separation (ft)	Separation Factor		
0.0	0.0	0.0	0.0	0.0	0.0	138.68	-271.4	238.6	361.7					
100.0	100.0	84.0	84.0	0.1	2.1	138.68	-271.4	238.6	361.4	359.2	2.20	164.566		
200.0	200.0	184.0	184.0	0.4	4.5	138.68	-271.4	238.6	361.4	356.5	4.92	73.431		
300.0	300.0	284.0	284.0	0.7	7.0	138.68	-271.4	238.6	361.4	353.7	7.65	47.259		
400.0	400.0	384.0	384.0	1.0	9.4	138.68	-271.4	238.6	361.4	351.0	10.37	34.842		
500.0	500.0	484.0	484.0	1.2	11.9	138.68	-271.4	238.6	361.4	348.3	13.10	27.592		
600.0	600.0	584.0	584.0	1.5	14.3	138.68	-271.4	238.6	361.4	345.6	15.82	22.839		
700.0	700.0	684.0	684.0	1.8	16.8	25.62	-271.4	238.6	359.0	340.5	18.51	19.395		
800.0	799.6	783.6	783.6	2.0	19.2	26.27	-271.4	238.6	352.0	330.8	21.14	16.650		
900.0	898.8	882.8	882.8	2.3	21.6	27.40	-271.4	238.6	340.3	316.6	23.71	14.351		
1,000.0	997.1	981.1	981.1	2.7	24.0	29.12	-271.4	238.6	324.2	297.9	26.23	12.360		
1,100.0	1,094.3	1,078.3	1,078.3	3.2	26.4	31.56	-271.4	238.6	303.9	275.2	28.70	10.588		
1,200.0	1,190.2	1,174.2	1,174.2	3.8	28.8	34.99	-271.4	238.6	279.8	248.7	31.18	8.975		
1,300.0	1,284.4	1,268.4	1,268.4	4.5	31.1	39.77	-271.4	238.6	252.7	219.0	33.78	7.483		
1,400.0	1,376.8	1,360.8	1,360.8	5.4	33.3	46.46	-271.4	238.6	223.8	187.1	36.67	6.101		
1,500.0	1,467.1	1,451.1	1,451.1	6.4	35.6	55.81	-271.4	238.6	195.0	154.9	40.14	4.859		
1,600.0	1,554.9	1,538.9	1,538.9	7.6	37.7	68.50	-271.4	238.6	170.4	126.1	44.30	3.846		
1,700.0	1,640.2	1,624.2	1,624.2	8.9	39.8	84.35	-271.4	238.6	156.2	107.5	48.63	3.211		
1,733.1	1,667.8	1,651.8	1,651.8	9.4	40.5	90.00	-271.4	238.6	155.1	105.2	49.90	3.108 CC, ES		
1,800.0	1,722.6	1,706.6	1,706.6	10.4	41.8	101.31	-271.4	238.6	159.7	107.9	51.83	3.082 SF		
1,900.0	1,801.9	1,785.9	1,785.9	12.1	43.8	116.44	-271.4	238.6	184.1	130.9	53.16	3.463		
2,000.0	1,877.9	1,861.9	1,861.9	13.9	45.6	128.19	-271.4	238.6	225.8	172.7	53.16	4.248		
2,066.9	1,926.9	1,910.9	1,910.9	15.2	46.8	134.22	-271.4	238.6	260.9	208.1	52.81	4.940		
2,100.0	1,950.7	1,934.7	1,934.7	15.8	47.4	137.19	-271.4	238.6	279.7	227.0	52.68	5.309		
2,200.0	2,022.6	2,006.6	2,006.6	17.8	49.2	144.50	-271.4	238.6	339.7	287.1	52.57	6.463		
2,300.0	2,094.5	2,078.5	2,078.5	19.8	50.9	149.88	-271.4	238.6	402.8	349.9	52.87	7.618		
2,400.0	2,166.5	2,150.5	2,150.5	21.9	52.7	153.96	-271.4	238.6	467.7	414.1	53.53	8.736		
2,500.0	2,238.4	2,222.4	2,222.4	23.9	54.4	157.11	-271.4	238.6	533.7	479.2	54.47	9.798		
2,600.0	2,310.3	2,294.3	2,294.3	25.9	56.2	159.61	-271.4	238.6	600.5	544.9	55.61	10.798		
2,700.0	2,382.2	2,366.2	2,366.2	28.0	58.0	161.64	-271.4	238.6	667.9	611.0	56.91	11.737		
2,800.0	2,454.2	2,438.2	2,438.2	30.0	59.7	163.31	-271.4	238.6	735.6	677.3	58.31	12.615		
7,300.0	5,127.7	5,111.7	5,111.7	79.2	125.2	92.13	-271.4	238.6	770.5	568.5	202.04	3.814		
7,400.0	5,121.4	5,105.4	5,105.4	81.2	125.1	91.59	-271.4	238.6	724.9	520.8	204.08	3.552		
7,500.0	5,115.1	5,099.1	5,099.1	83.2	124.9	91.04	-271.4	238.6	690.8	484.6	206.19	3.350		
7,600.0	5,108.8	5,092.8	5,092.8	85.4	124.8	90.50	-271.4	238.6	669.9	461.5	208.36	3.215		
7,692.6	5,103.0	5,087.0	5,087.0	87.4	124.6	90.00	-271.4	238.6	663.5	453.1	210.43	3.153		
7,700.0	5,102.5	5,086.5	5,086.5	87.6	124.6	89.96	-271.4	238.6	663.5	452.9	210.59	3.151		
7,800.0	5,096.2	5,080.2	5,080.2	89.9	124.5	89.42	-271.4	238.6	672.1	459.2	212.87	3.157		
7,900.0	5,089.9	5,073.9	5,073.9	92.3	124.3	88.88	-271.4	238.6	695.0	479.8	215.20	3.230		
8,000.0	5,083.6	5,067.6	5,067.6	94.7	124.2	88.33	-271.4	238.6	731.0	513.4	217.56	3.360		
8,100.0	5,077.3	5,061.3	5,061.3	97.3	124.0	87.79	-271.4	238.6	778.2	558.2	219.96	3.538		

Company:	Maggie Operating, Inc.	Local Co-ordinate Reference:	Well Campion 5-6 2H
Project:	SEC.5-T4N-R68W	TVD Reference:	WELL @ 5084.0ft (Original Well Elev)
Reference Site:	Campion Pad Sec.5-T4N-R68W	MD Reference:	WELL @ 5084.0ft (Original Well Elev)
Site Error:	0.0 ft	North Reference:	True
Reference Well:	Campion 5-6 2H	Survey Calculation Method:	Minimum Curvature
Well Error:	0.0 ft	Output errors are at	2.45 sigma
Reference Wellbore	Wellbore #1	Database:	US_EDM
Reference Design:	Plan #1 (2-28-18)	Offset TVD Reference:	Offset Datum

Reference Depths are relative to WELL @ 5084.0ft (Original Well Elev)
Offset Depths are relative to Offset Datum
Central Meridian is -105.500000

Coordinates are relative to: Campion 5-6 2H
Coordinate System is US State Plane 1983, Colorado Northern Zone
Grid Convergence at Surface is: 0.30°



Company:	Maggie Operating, Inc.	Local Co-ordinate Reference:	Well Campion 5-6 2H
Project:	SEC.5-T4N-R68W	TVD Reference:	WELL @ 5084.0ft (Original Well Elev)
Reference Site:	Campion Pad Sec.5-T4N-R68W	MD Reference:	WELL @ 5084.0ft (Original Well Elev)
Site Error:	0.0 ft	North Reference:	True
Reference Well:	Campion 5-6 2H	Survey Calculation Method:	Minimum Curvature
Well Error:	0.0 ft	Output errors are at	2.45 sigma
Reference Wellbore	Wellbore #1	Database:	US_EDM
Reference Design:	Plan #1 (2-28-18)	Offset TVD Reference:	Offset Datum

Reference Depths are relative to WELL @ 5084.0ft (Original Well Elev)
Offset Depths are relative to Offset Datum
Central Meridian is -105.500000

Coordinates are relative to: Campion 5-6 2H
Coordinate System is US State Plane 1983, Colorado Northern Zone
Grid Convergence at Surface is: 0.30°

